



**Warning:** Our pipes are only for off-road racing use. These pipes are NOT LEGAL FOR SALE OR USE IN CALIFORNIA ON ANY POLLUTION CONTROLLED MOTOR VEHICLES.

**Warning:** This muffler only fit GOLDWING 2001-2017 Partial Models' Stock header pipes.

If you have aftermarket headers, please check the muffler inlet with your header inside pipe before install.



Please ignore the gloss black on the mufflers. The mufflers will be produced in Chrome and Flat Black. And the length will be the same as OEM or STOCK.

**ITEM SUPPLIED:**

- 1-LEFT SLIP-ON MUFFLER
- 1-RIGHT SLIP-ON MUFFLER
- 1-A PACK OF HARDWARE
- 1-INSTALLATION INSTRUCTION

**FITMENT:**

- FOR 2001-2017 GOLD WING MODELS
- NOT FOR 2014 GL1800C MODELS**
- NOT FOR 2015 GL1800C MODELS**

**SUGGESTED TOOLS:**



15MM LONG HANDLE SOCKET



8MM WRENCH



**Make sure that THE BIKE is completely cooled down before ANY OPERATION.**

## **INSTALLATION INSTRUCTIONS FOR HONDA GOLDWING 2001-2017 MODELS' SLIP-ON MUFFLERS:**

**Please use the nuts and clamps come with the pipes.**

1. Before doing any actions to your bike. Please sure your bike is right parked. Do not easy to fall down when you are pulling or installing the exhausts.

2. Before installing the new pipes. We need to remove the stock slip-on mufflers first.  
**(Shown in Figure 1)**

3. Let's start with the Left side exhaust. Use a **6mm Ball End Allen Wrench** to loosen the stock clamp screws. **(Shown in Figure 2)**

4. Next, use a **13mm Long-Socket Driver** to loosen the bracket bolt underneath the side bag. Please save the stock bolt for later re-use. **(Shown in Figure 3/4)**

**If the stock bracket bolt is not the same as the Figure 4, please ignore it. Just save it for later re-use.**

5. Carefully twist and pull the mufflers with a little hard force backward to unhook the front heat shield and the muffler. Then remove it. **(Shown in Figure 5)**

6. Now, the same steps and methods to remove the right side muffler. Please also save the stock bolt for later re-use. **(Shown in Figure 6/7/8/9)**

7. Put the stock muffler aside. Then get the rubber mutes off the stock mufflers and install them to the new one. **(Shown in Figure 10/11/12/13/14)**

**The new mufflers will be the same length (32.5"= Approx. 830mm) as the OEM or Stock one. Please note.**

8. Before we start to install the new muffler, please pay attention to the heat shield first. These 2 holders are for the mufflers' rubber-mute-head. When you slide the new muffler on, please slign them correct. Or you can not install the muffler to the header correctly.  
**(Shown in Figure 15)**

9. Now, we will begin to install the right side new muffler first. Glove the new clamp (44~47mm) to the inlet. **(Shown in Figure 16)**

**Install the right side first or the left side first is up to you. No priority.**

10. Align the inlet with head pipe, and push the rubber mute hooks back into the holders on the heat shield. Then get the bracket holder line with the muffler bracket screw hole. Then secure the muffler by using the stock bolt and the new nut coming with the new muffler with **M8 Long-handle Socket Wrench**. **(Shown in Figure 17)**

11. Then check the gap between muffler to the side bag, and the heat shield. Especialy, to sure that it is seamless between the muffler and muffler. Then we can tighten the clamp connecting the muffler to the header with a 15mm socket wrench.  
**(Shown in Figure 18/19)**

12. Now we can install the new left muffler the same way as the right one.  
**(Shown in Figure 20/ 21)**

13. Once the left-side muffler is also in position, you can check the horizontal level of both sides of the mufflers from the back of the bike. Tighten both mufflers all the way down, and then ask for assistance from friends or family members to hold the bike upright and vertical for easy checking. **(Shown in Figure 22)**

14. After all the adjustments have been made, double-check all gaps and alignments then tighten them all the way down to the end.

15. Finally, be sure to wipe all fingerprints or oil stain off after installation, before start the engine.

**Note: If you leave a fingerprint to it, the chrome of the heat shield may discolor when it heats up!**

**Figure 1**



**Figure 2**



**Figure 3**



**Figure 4**



**Figure 5**



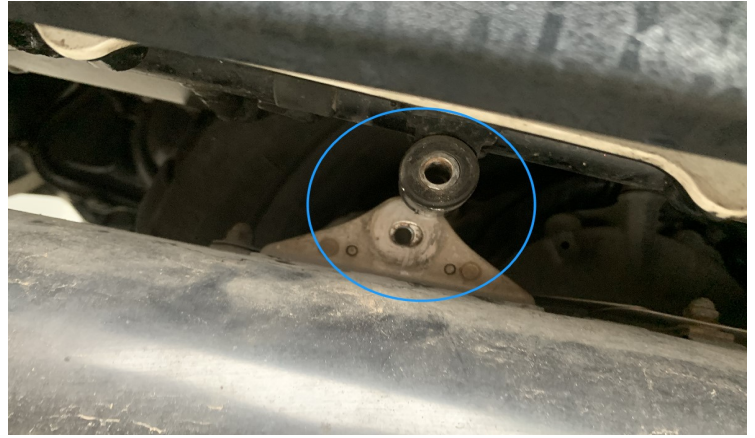
**Figure 6**



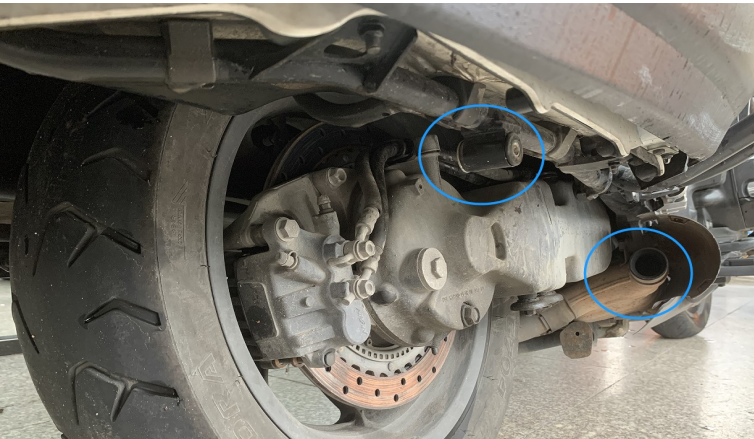
**Figure 7**



**Figure 8**



**Figure 9**



**Figure 10**



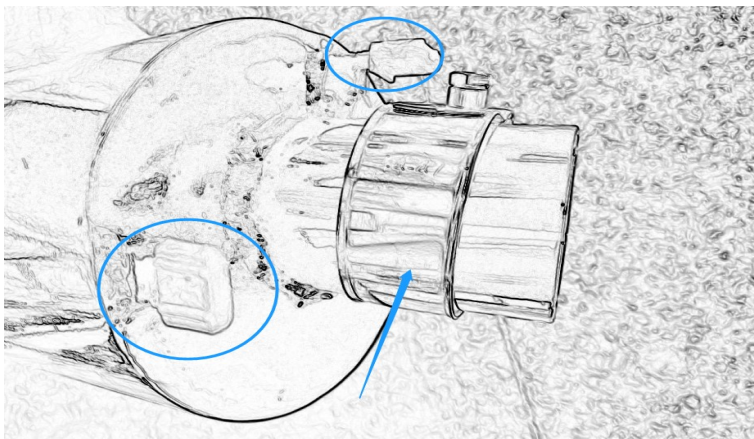
**Figure 11**



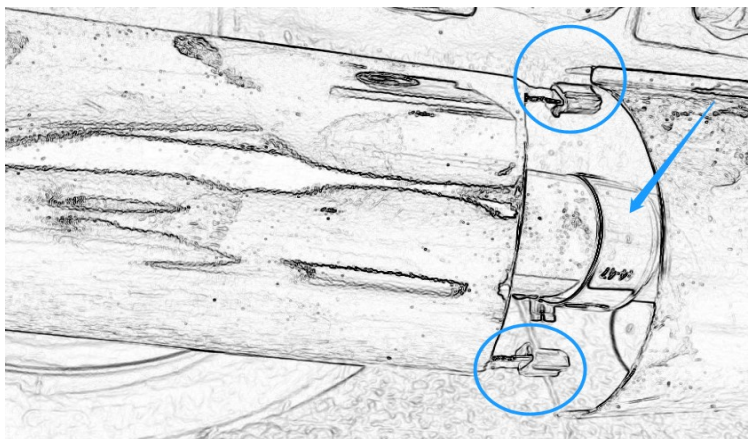
**Figure 12**



**Figure 13**



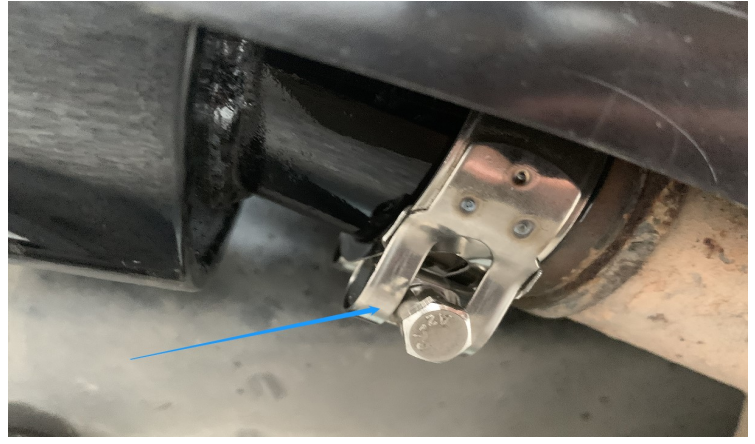
**Figure 14**



**Figure 15**



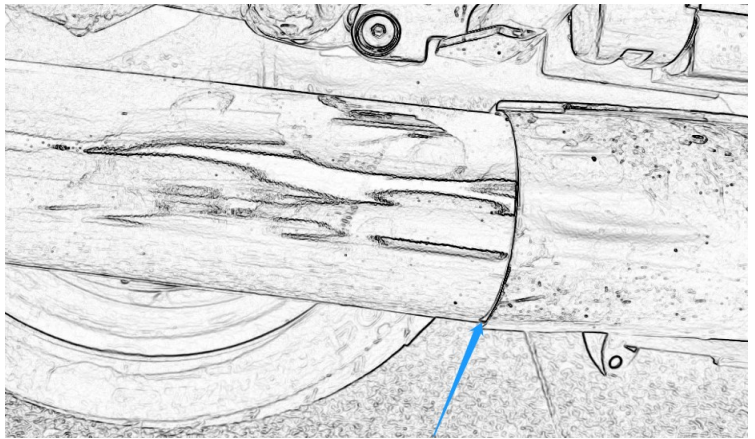
**Figure 16**



**Figure 17**



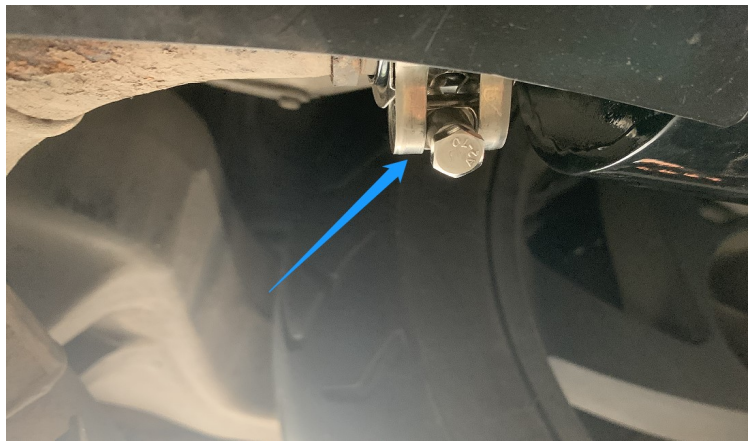
**Figure 18**



**Figure 19**



**Figure 20**



**Figure 21**



**Figure 22**



**Be sure to tighten all hardware before starting your engine.  
Retighten after the first 100 miles.**

**Discoloration:** DOES NOT WARRANTY ANY CHROME EXHAUST PRODUCTS AGAINST DISCOLORATION!

Discoloration is not a defect in chrome. All chrome exhaust systems will turn color. Chrome discoloration is a result of heat. The more heat the chrome is exposed to, the quicker and more severe the discoloration will be.

**Tuning:** It is strongly recommended by SHARKROAD. Better flowing, less restrictive exhaust will require more intake, so please consider upgrading your air cleaner along with your fuel-management system. Working with high-flow intake, Fuel Management system, and correct profession re-mapping, the bike would gain a more better performance.

**C.A.R.B.:** California does not allow the use of aftermarket exhaust systems that remove original equipment catalyts, (except for racing use only) unless the Air Resources Board has issued an Executive Order for that system.

**Returns:** When you want to return, please contact us in 72 hours after received the product so we can help you out immediately. We only accept return in 30 days after your order. International Return is not acceptable. For return shipping cost to our warehouse, If the product have quality or shipping damage issue, We will send you shipping label or pay the cost after you send out. If you don't like the product or buy by mistake, Buyer should stand this shipping cost.

**Warranty:** SHARKROAD products are warranted for one year against defects in material and workmanship. This warranty does not cover chrome discoloration or rust. Also SHARKROAD will not warranty any abused, misused, improperly installed or modified system.

Wearing a helmet while riding is always recommended. Please never go for a ride while under the influence of alcohol and/or drugs. Enjoy the new voice and the fresh look of your motorcycle and please ride safely.