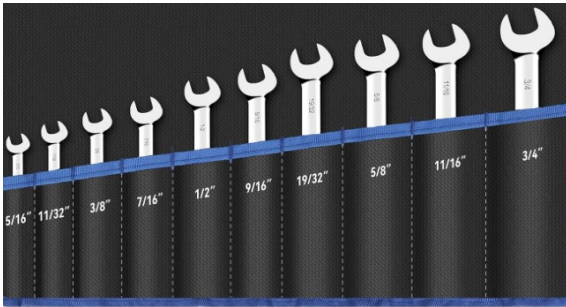




Warning: Our pipes are illegal for EPA, CALIFORNIA and CARB. Only for off-road racing use.

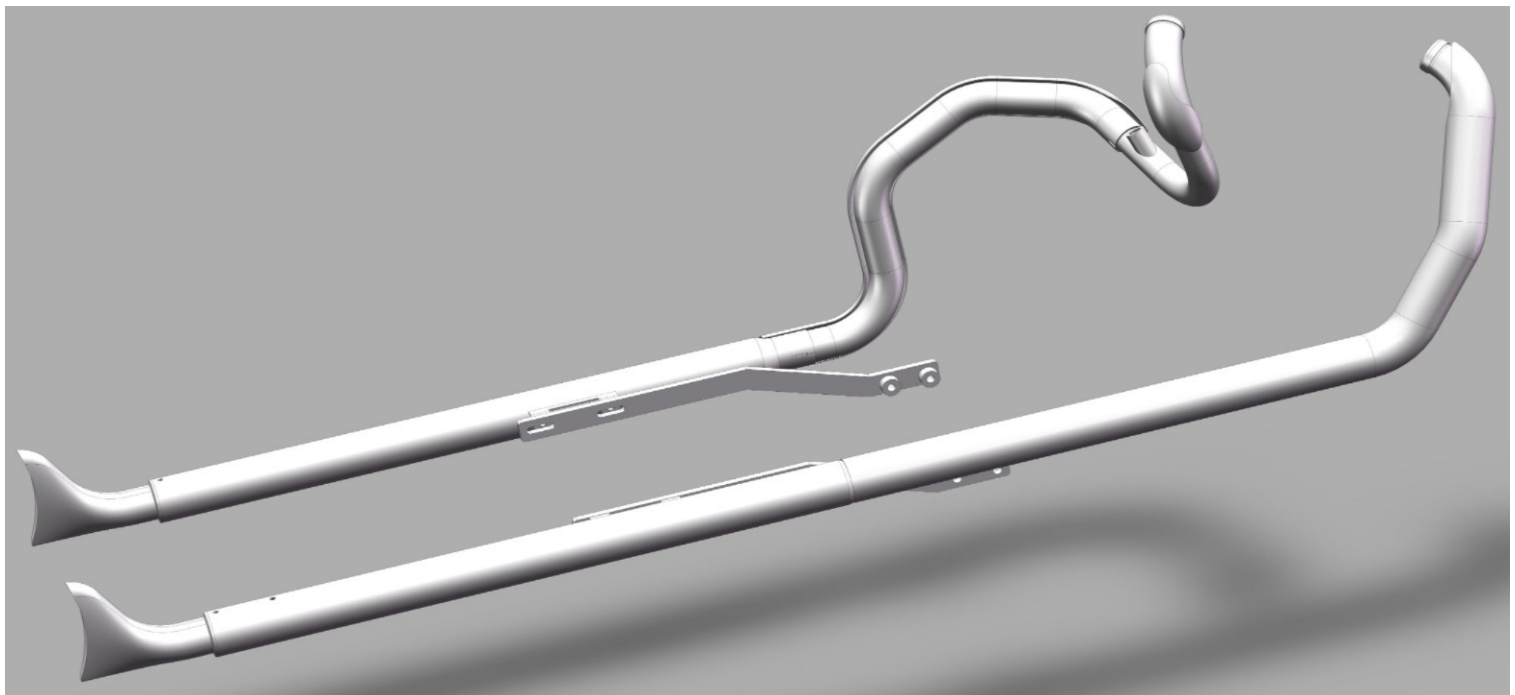
Warning: Checking with your local state and Federal Laws before you take any action on your head pipes. Our exhaust pipes are only for off-road using, not for street riding. Please note.

SUGGESTED TOOLS:



- COMBINATION WRENCH - 9/16", 7/32"
- HEX WRENCH - 5/16"
- PHILLIPS SCREWDRIVER - 1/4"
- SOCKET WRENCH - 10MM, 13MM

HDEX-22 (2-2 TRUE DUAL EXHAUST SYSTEM) FOR 2007-2017 HARLEY SOFTTAIL PARTIAL MODELS



ITEM SUPPLIED:

- 3- HEADER PIPE BODY
- 3- HEAT SHIELD
- 2- FISHTAIL MUFFLER
- 2- BRACKET
- 1- A PACK OF HARDWARE
- 1- INSTALLATION INSTRUCTION

FITMENT:

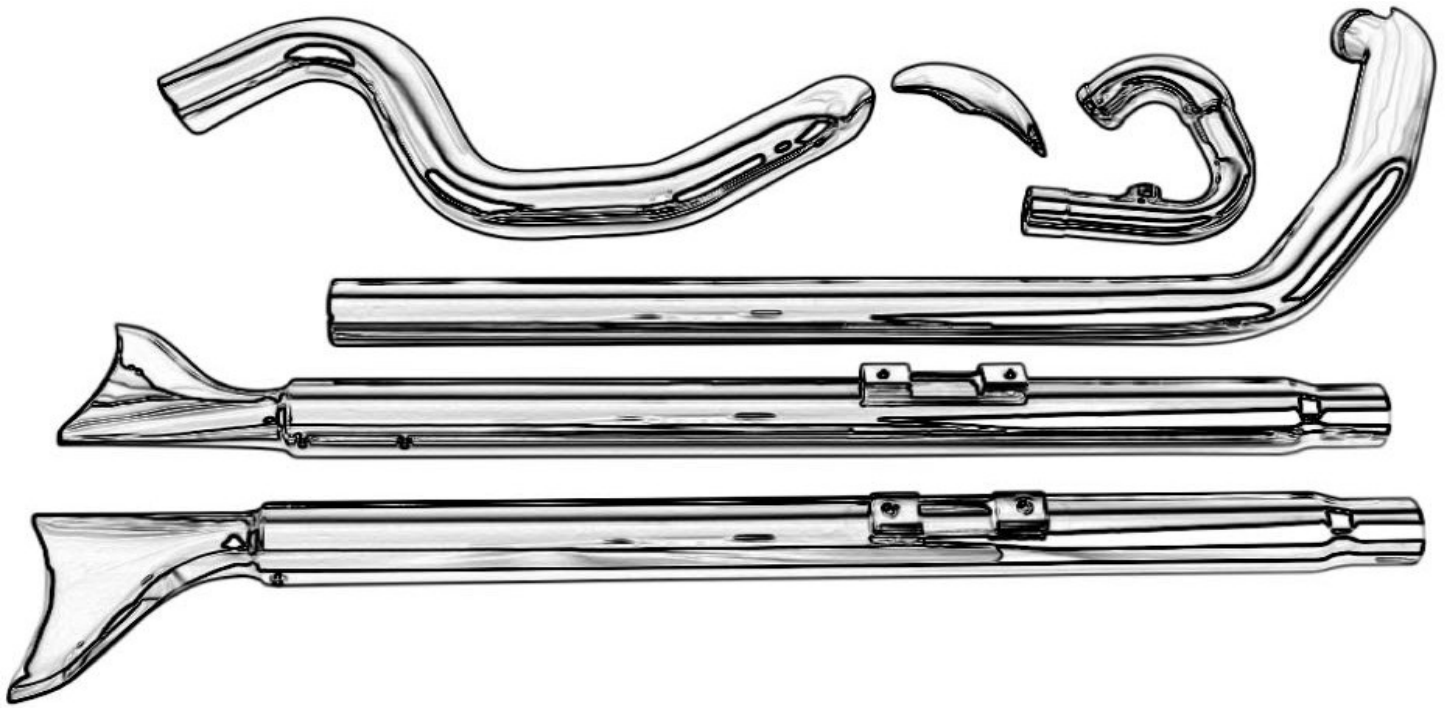
FOR 2007-2017 HARLEY SOFTTAIL MODELS
NOT FOR SOFTTAIL MODELS BEFORE 2007



HARDWARE LIST

**NOTES: O2 sensor plugs are already installed on the head pipes.
Please check them on the headers.**

(1.) 2 * MUFFLER BRAKETS- LEFT & RIGHT	(2.) 2 * FLANGE KIT, SNAP RING & GASKET
(3.) 4 * 3/8-16*1-1/4 BOLTS	(4.) 4 * M8 BOLTS, FLAT WASHERS A & B
(5.) 4 * ENGINE PORT STUD NUTS	(6.) 2 * O2 SENSOR PORT TRANSFER (18MM TO 12MM)
(7.) 2 * 48-51MM CLAMP FOR FISHTAIL PIPES	(8.) 1 * 44-47MM CLAMP FOR LEFT SIDE HEADER
(9.) 8 * HOSE CLAMP FOR HEAT SHIELD	(10.) 1 * ZIP TIE



Make sure that THE BIKE is completely cooled down before ANY OPERATION.

INSTALLATION INSTRUCTIONS

2-2 EXHAUST SYSTEM FOR 2007-2017 HARLEY SOFTAIL MODELS:

Please use the bolts and nuts come with the pipes.

1. Before taking any action on your bike, please make sure that it is parked correctly to prevent it from falling down while you are pulling or installing the exhausts.

Note: We cannot be held responsible for any injuries that may occur during the installation of pipes or exhausts, as it may vary depending on the condition of the bike or the work site.

2. Before installing the new 2-2 exhaust system, we need to remove the entire stock exhaust system firstly.

3. Release the pins (2 pins/bag) of the saddlebags, then remove the saddlebags carefully. Put them on a carpet or some sort of soft surface from scratching.

Note: Removing the saddle bags is not required. So if you can access to the connection to off the exhaust system, you can leave the saddle bags there.

4. Grab a 15mm (9/16") socket to loosen up the exhaust clamps (A & C) that hold the muffler inlets in place. Then, use a 10.5mm (13/32") wrench to loosen the nuts (B & D) on the muffler bracket. Now, go ahead and twist the muffler backwards to remove it. Be careful not to damage them while doing this. Give it a slight twist and gently pull the muffler out until it slides off the head pipe. Place it aside prevent any scratches. **(Shown in Figure 1/2/3/4)**

5. Loosen the O2 sensor connecting to the stock head pipes with a 9/16" wrench. And put it aside for the new head pipes later using.

6. All right. Then we use a 13mm socket to loosen the studs holding the engine port flanges. **(Shown in Figure 5)**

7. Use a T45 to loosen the stock bracket bolts for the whole exhaust system. And remove the whole side bracket away when nuts off. **(Shown in Figure 6/7/8)**

8. Now we can begin installing the new exhaust system. Please disconnect the O2 sensor plug and carefully attach the new flange kit to the new head pipe (the longest one). Use the new flange stud nuts to secure it in place. However, do not tighten it just yet. We will need to check the gap later on for proper fitting. **(Shown in Figure 9/10)**

9. Next, install the new flange kit to the shortest one. Then tuck it into the space room under the seat and connect it with the rear engine port. **(Shown in Figure 11)**

10. Now you can see the end of the shortest head pipe's end on the left side of the bike. Please connect your O2 sensor to the hole properly. If you have a 12mm diameter O2 sensor, please use the O2 sensor transfer **(coming in the hardware pack)** to adopt the 18mm hole to a 12mm one. Now use the 44-47mm clamp connect the last one header together. Do not tighten the clamp yet for later proper gap checking. **(Shown in Figure 12/13)**

11. Ok. Install the left side bracket **(coming in the hardware pack)** to the bike. The bumps on the bracket should be faced to the bike wheel side. Use a 5/16" Allen hex driver to fix the 3/8-16*1-1/4 bolts. Moreover, slid the fishtail muffler onto the head pipe with a 48-51mm clamp. **(Shown in Figure 14/15/16)**

12. Align the fishtail muffler to the left side bracket installing holes. Then use M8 bolts and flat washers to hold it. Please do not tighten them yet for later proper gap checking. **(Shown in Figure 17)**

13. Install the engine port side bracket with the 3/8-16*1-1/4 bolts by a 5/16" Allen hex driver. **(Shown in Figure 18)**

14. Sliding the fishtail muffler onto the header and fix it with a 48-51mm clamp. Then mount the tail to the bracket with 2 M8 bolts, nuts and flat washers. **(Shown in Figure 19)**

15. Once the previous steps has been completed, now you can check the horizontal level of both sides of the mufflers from the back of the bike. Tighten both mufflers all the way down, and then ask for assistance from friends or family members to hold the bike upright and vertical for easy checking. **(Shown in Figure 20/21/22)**

16. After that, please be sure to wipe all fingerprints or oil stain off before install the heat-shields into positions.

17. Awesome. We are almost there. Plug the O2 sensor wire to the front engine head pipe. If you have a 12mm wire, please use the transport. **(Shown in Figure 23/24)**

18. After all the previous steps have been made, reinstall the left-side and right side heat-shield into position and tighten it all the way down to the end. **(Shown in Figure 25/26)**

19. Before starting your bike, please check all the bolts, nuts, clamps, and screws, including the heat shields are all tighten down. No rattling sound or other issue.

29. Finally, be sure to wipe all fingerprints or oil stain off after installation, before start the engine.

Note: If you leave a fingerprint to it, the chrome may discolor when it heats up!

HERE ARE PHOTOS FOR YOUR REFERENCE.

Figure 1



Figure 2

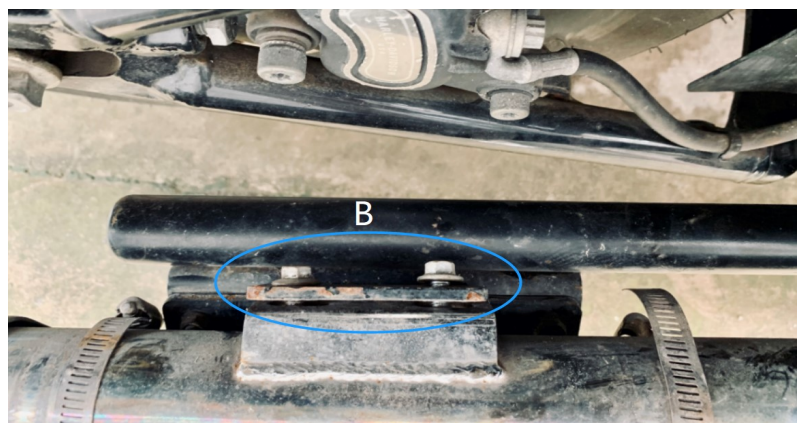


Figure 3

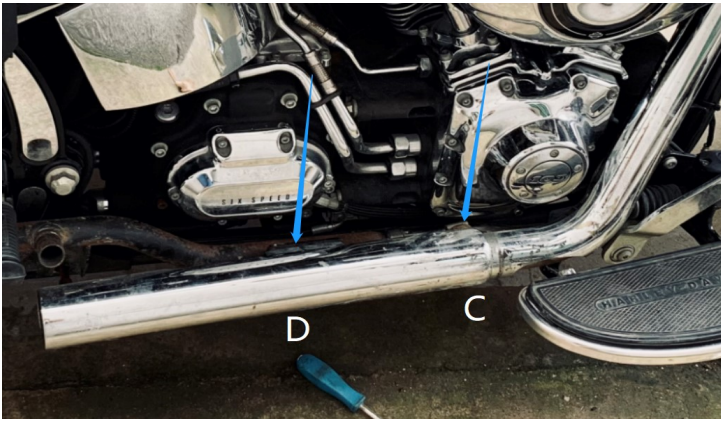


Figure 5



Figure 7



Figure 9



Figure 4

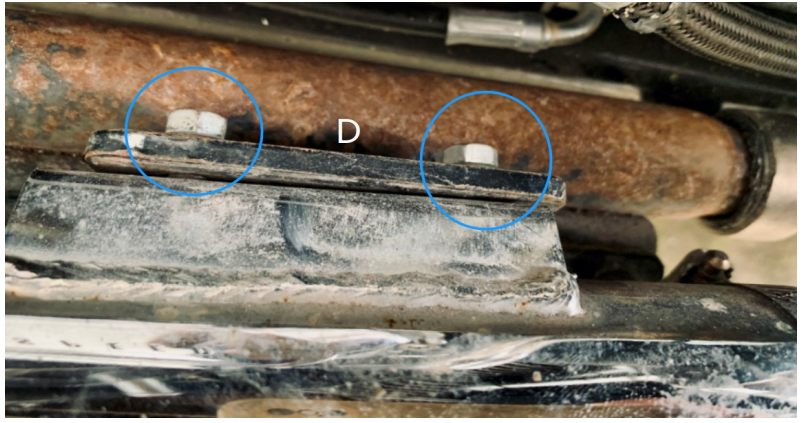


Figure 6



Figure 8



Figure 10



Figure 11



Figure 12



Figure 13



Figure 14



Figure 15

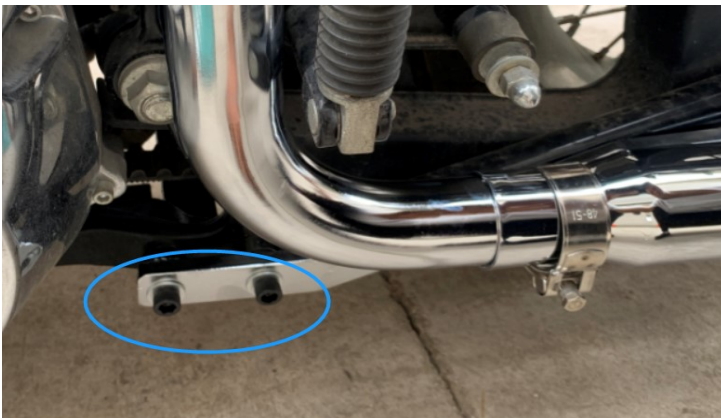


Figure 16



Figure 17



Figure 18



Figure 19

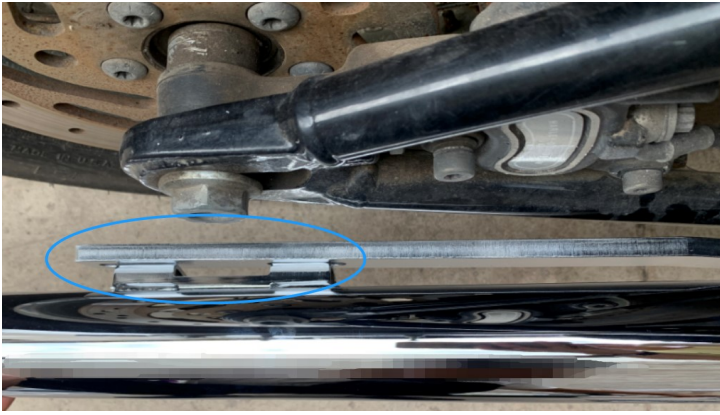


Figure 20



Figure 21



Figure 22



Figure 23



Figure 24



Figure 25



Figure 26



1. Please retuning your motorcycle immediately with Dyna Tuning Map after changing head pipes.

2. Be sure to tighten all hardware before starting your engine. Retighten after the first 100 miles.

Discoloration: DOES NOT WARRANTY ANY CHROME EXHAUST PRODUCTS AGAINST DISCOLORATION!

Discoloration is not a defect in chrome. All chrome exhaust systems will turn color. Chrome discoloration is a result of heat. The more heat the chrome is exposed to, the quicker and more severe the discoloration will be.

Tuning: It is strongly recommended by SHARKROAD. Better flowing, less restrictive exhaust will require more intake, so please consider upgrading your air cleaner along with your fuel-management system. Working with high-flow intake, Fuel Management system, and correct profession re-mapping, the bike would gain a more better performance.

C.A.R.B.: California does not allow the use of aftermarket exhaust systems that remove original equipment catalyts, (except for racing use only) unless the Air Resources Board has issued an Executive Order for that system.

Returns: When you want to return, please contact us in 72 hours after received the product so we can help you out immediately. We only accept return in 30 days after your order. International Return is not acceptable. For return shipping cost to our warehouse, If the product have quality or shipping damage issue, We will send you shipping label or pay the cost after you send out. If you don't like the product or buy by mistake, Buyer should stand this shipping cost.

Warranty: SHARKROAD products are warranted for one year against defects in material and workmanship. This warranty does not cover chrome discoloration or rust. Also SHARKROAD will not warranty any abused, misused, improperly installed or modified system.

Wearing a helmet while riding is always recommended.

Please never go for a ride while under the influence of alcohol and/or drugs.

Enjoy the new voice and the fresh look of your motorcycle and ride safe.