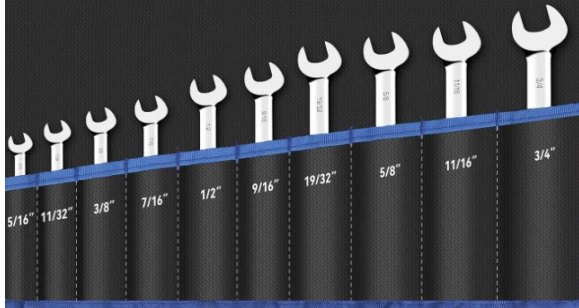




Warning: Our pipes are illegal for EPA, CALIFORNIA and CARB. Only for off-road racing use.

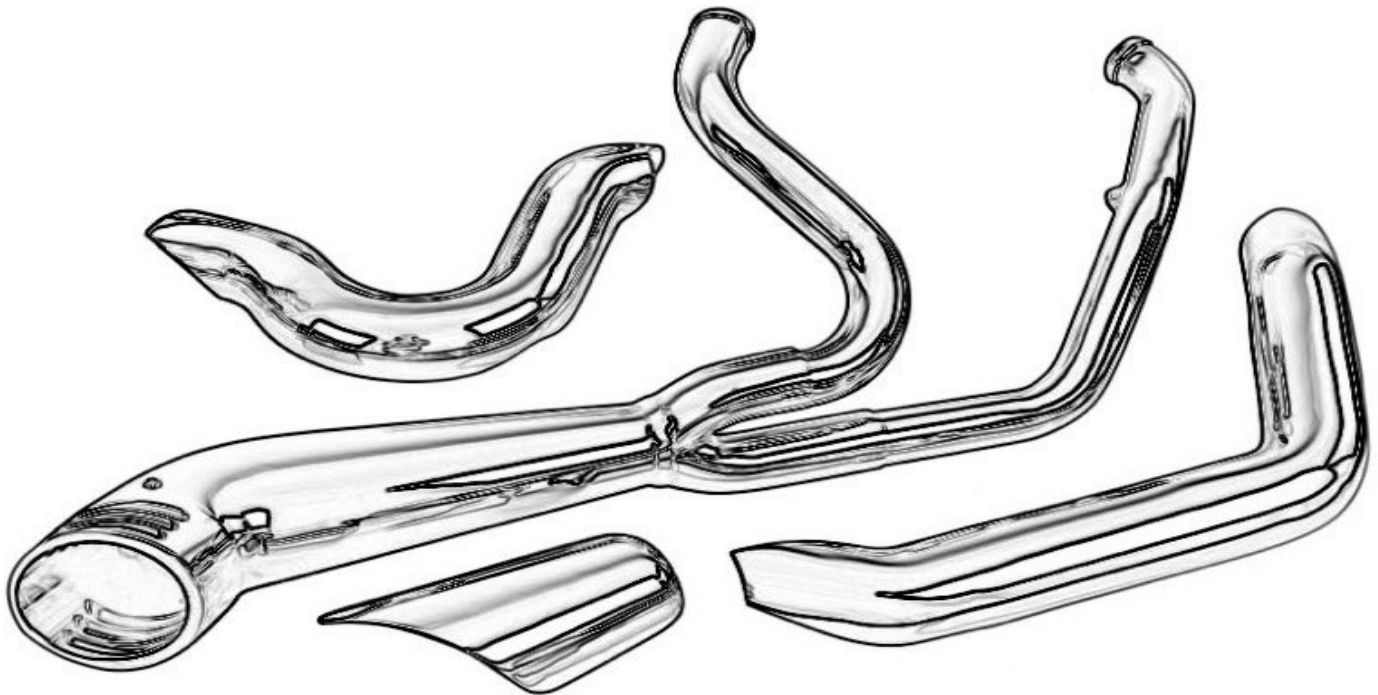
Warning: Checking with your local state and Federal Laws before you take any action on your head pipes. Our exhaust pipes are only for off-road using, not for street riding. Please note.

SUGGESTED TOOLS:



COMBINATION WRENCH - 5/16", 11/16",
ALLEN HEX WRENCH - 7/32", 3/16", 1/4", 5/16"
PHILLIPS SCREWDRIVER - 1/4"
SOCKET WRENCH - 10MM, 13MM, 15MM
TORX SOCKET- T27, T40, T45
SNAP RING PLIERS

HDEX-20 (2-1 EXHAUST SYSTEM) FOR 2018-UP HARLEY SOFTAIL FATBOY OR BREAKOUT MODELS

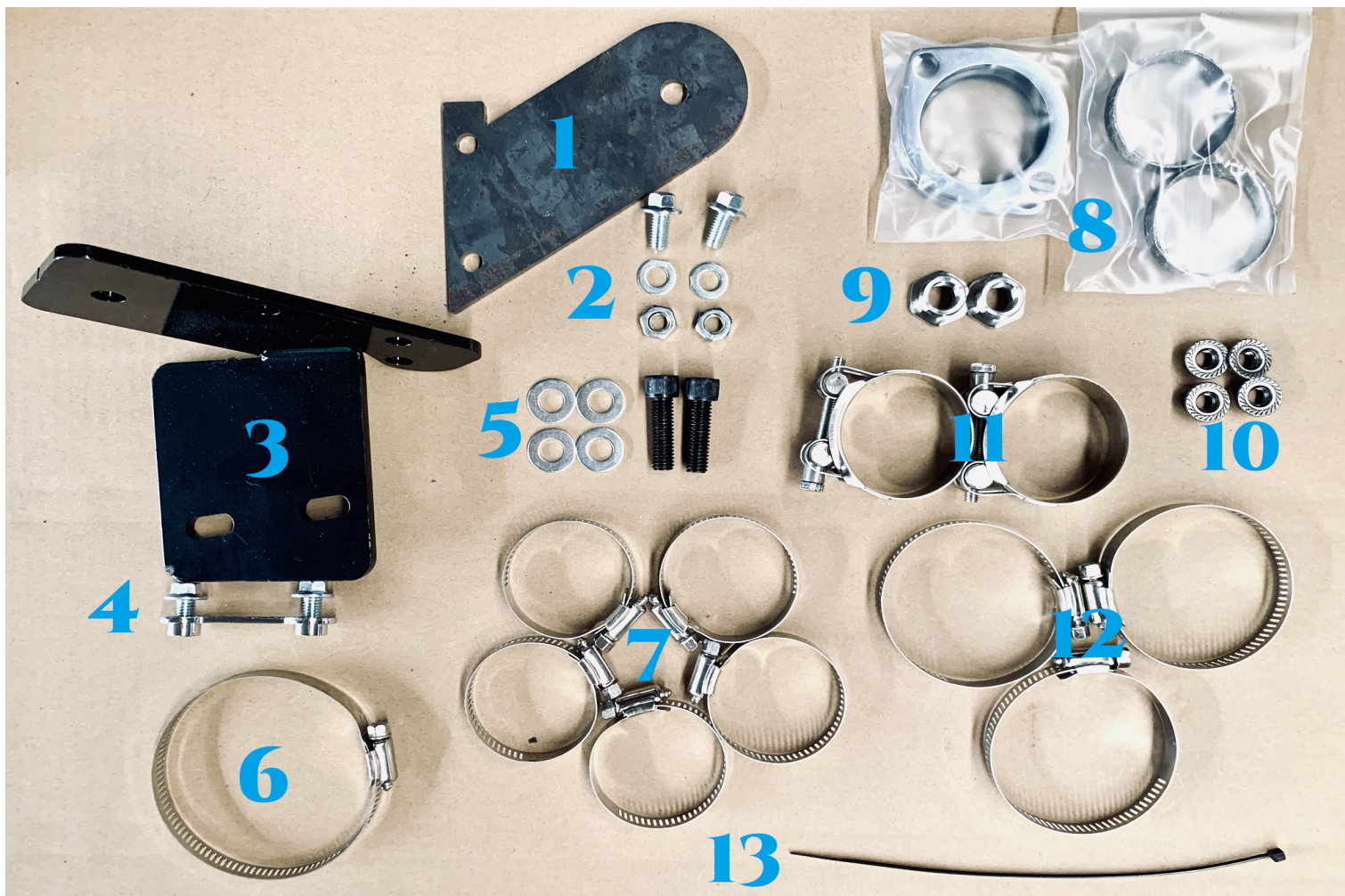


ITEM SUPPLIED:

- 2- HEADER PIPE BODY
- 3- HEAT SHIELD
- 1- EXHAUST BODY
- 2- BRACKET (1*BIG, 1* SMALL)
- 1- A PACK OF HARDWARE
- 1- INSTALLATION INSTRUCTION

FITMENT:

FOR 2018-UP HARLEY SOFTTAIL FAT BOY AND BREAKOUT
NOT FOR HARLEY SOFTTAIL OTHER MODELS



HARDWARE LIST

**NOTES: O2 sensor plugs are already installed on the head pipes.
Please check them on the headers.**

(1.) 1 * <i>BRAKET FOR RIGHT SIDE PASSENGER FOOT PEG</i>	(2.) 2 * M8 X 16MM BOLTS 2 * M8 X 16MM NUTS 2 * M8 FLAT WASHER
(3.) 1 * <i>BRAKET FOR EXHAUST BODY</i>	(4.) 1 * M8 DOG-BONE PLATE WITH BOLTS
(5.) 2 * 3/8-16*1" BOLTS 4 * 3/8" FLAT WASHER	(6.) 1 * 65-89MM HOSE CLAMP FOR HEAT SHIELD
(7.) 5 * 27-51MM HOSE CLAMP FOR HEAT SHIELD	(8.) 2 * FLANGE KIT, SNAP RING & GASKET
(9.) 2 * O2 SENSOR PORT TRANSFER (18MM TO 12MM)	(10.) 4 * ENGINE PORT STUD NUTS
(11.) 2 * 48-51MM CLAMP	(12.) 3 * 46-70MM HOSE CLAMP FOR HEAT SHIELD
(13.) 1 * ZIP TIE	

Removing the stock exhaust system may vary slightly depending on the specific models. Please refer to the necessary tools or locations based on the specific requirements of the practice bike. Thank you for your cooperation.

Make sure that THE BIKE is completely cooled down before ANY OPERATION.

INSTALLATION INSTRUCTIONS

2-1 EXHAUST SYSTEM FOR 2018-UP HARLEY SOFTAIL FATBOY AND BREAKOUT MODELS:

Please use the bolts and nuts come with the pipes.

1. Before taking any action on your bike, please make sure that it is parked correctly to prevent it from falling down while you are pulling or installing the exhausts.

Note: We cannot be held responsible for any injuries that may occur during the installation of pipes or exhausts, as it may vary depending on the condition of the bike or the work site.

2. Before installing the new 2-2 exhaust system, we need to remove the entire stock exhaust system firstly.

3. First, we will release the mufflers. Then remove the header pipes. Next, the bracket for the stock mufflers.

Note: Please put the stock mufflers, head pipes, bracket, and hardware side. Maybe you want to install them again one day.

4. Grab a 15mm (9/16") socket to loosen up the exhaust clamps (A & B) that hold the muffler inlets in place. Then, use a 3/16" Allen hex wrench to loosen the nuts (C & D) on the muffler bracket. Now, go ahead and twist the muffler backwards to remove it. Be careful not to damage them while doing this. Give it a slight twist and gently pull the muffler out until it slides off the head pipe. Place it aside prevent any scratches. **(Shown in Figure 1/2/3/4)**

5. Loosen the O2 sensor connecting to the stock engine head pipes with a 11/16" wrench. **(Shown in Figure 5/6/7)**

6. All right. Then we use a 13mm socket to loosen the studs holding the engine port flanges. The socket may against the frame when access to the front engine port studs for some of the Fatboy or Breakout models. So please use a T27 to loosen the oil cooler guard and the oil cooler for easier operation. Once you can access to the engine flange stud, you can loosen them and remove the headers. **(Shown in Figure 8/9)**

7. Now we can remove and replce the stock braket with the new one. Use a 5/16" allen hex driver to loosen the stock bracket bolts. Then install the new bracket with new **3/8-16*1" Bolts and Nuts.** **(Shown in Figure 10/11/12/13)**

8. We will install the right passenger footpeg back to the new bracket. So we need to get it off the stock bracket with a snap ring plier and a T45 driver. **(Shown in Figure 14/15)**

9. Alright, let's start installing the new exhaust system. Start by connecting the new flange kit to the front and rear engine head pipe. Then, use a 5/16" Allen hex driver to disconnect the O2 sensor plug and carefully attach the O2 sensor wire to the pipe using an 11/16" wrench. Now, take the new flange stud nuts and use them to secure everything in position. But wait, don't fully tighten them yet. We'll need to check the gap later to make sure it fits properly. **(Shown in Figure 16/17/18/19/20/21/22)**

Note: For certain models, the O2 sensor wire might be slightly too short when you connect it to the front engine header. In such cases, you'll need to gently stretch out the rubber hanger for the wire to create enough space. Be cautious not to tug the wire excessively and risk damaging it. (Shown in Figure 19)

10. Once you've finished the previous steps, place the 48-51mm clamps onto the exhaust body inlet, making sure they align snugly with the headers. Then, use a set of M8 DOG-BONE plate and bolts to secure the exhaust body to the bracket. However, please refrain from tightening the dog bone bolts just yet, as we'll need to make proper adjustments when connecting it to the headers. **(Shown in Figure 23)**

11. Once the adjustment is completed and the exhaust body is properly fitting to the headers, go ahead and secure the exhaust system all the way to the end. Also, don't forget to remove any fingerprints or oil stains before you install the heat shields. **(Shown in Figure 24)**

Note: If you leave a fingerprint to it, the chrome may discolor when it heats up!

12. Afterwards, go ahead and secure the heat shield using hose clamps. Start from the engine port and gradually use hose clamps measuring 27-51mm, 46-70mm, and 65-89mm along the way. **(Shown in Figure 25/26)**

13. Once the previous steps have been completed, we can now proceed with installing the small bracket onto the larger one using M8 bolts and nuts. Ensure that you tighten them firmly into place. **(Shown in Figure 27/28)**

14. Afterwards, reinstall the passenger peg on the right side using the original bolt and secure it with the snap ring chip using a T45 driver and snap ring pliers. Ensure that it is not pressing against the heat shield once it is installed. **(Shown in Figure 29/30)**

15. Awesome. We are almost there. After all the previous steps have been made, reinstall radiator grill back with a T27 driver. **(Shown in Figure 31/32)**

16. Great. The job is done. Before starting your bike, please check all the bolts, nuts, clamps, and screws, including the heat shields are all tighten down. No rattling sound or other issue.

17. Finally, be sure to wipe all fingerprints or oil stain off after installation, before start the engine.

Note: If you leave a fingerprint to it, the chrome may discolor when it heats up!

HERE ARE PHOTOS FOR YOUR REFERENCE.

Figure 1



Figure 2

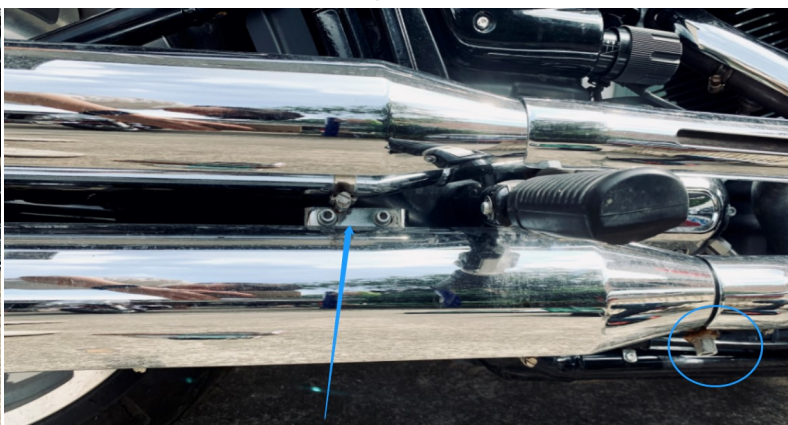


Figure 3



Figure 4



Figure 5



Figure 6



Figure 7

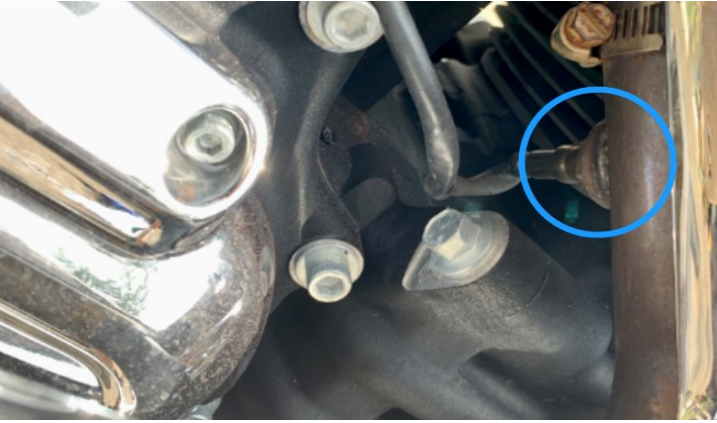


Figure 8



Figure 9



Figure 10

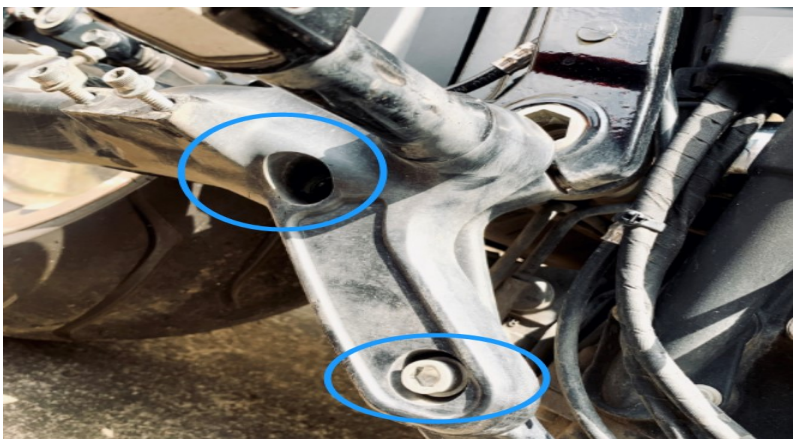


Figure 11



Figure 12



Figure 13

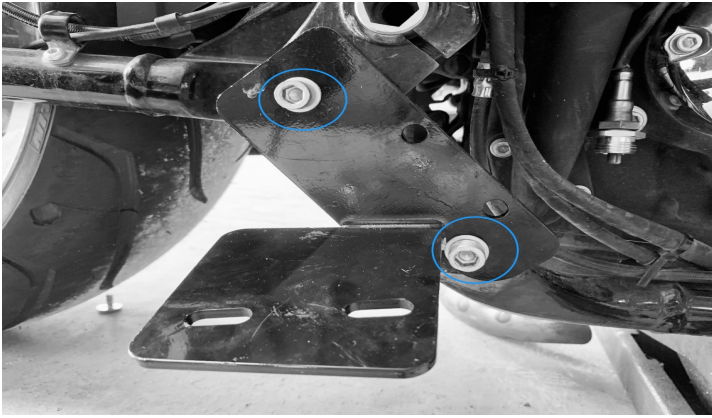


Figure 14



Figure 15



Figure 16



Figure 17



Figure 18



Figure 19



Figure 20



Figure 21



Figure 22



Figure 23

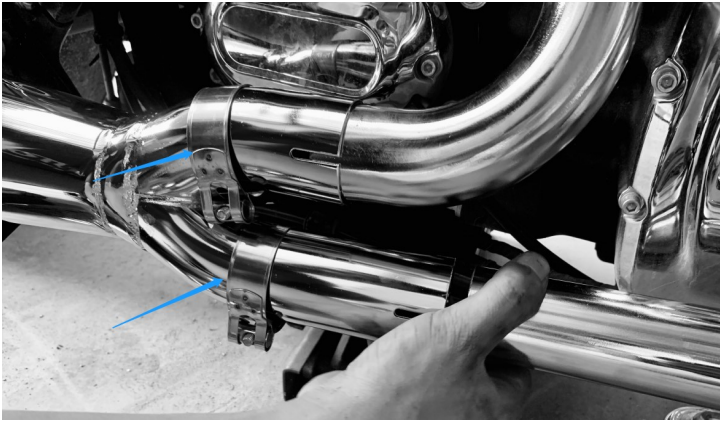


Figure 24



Figure 25



Figure 26



Figure 27



Figure 28

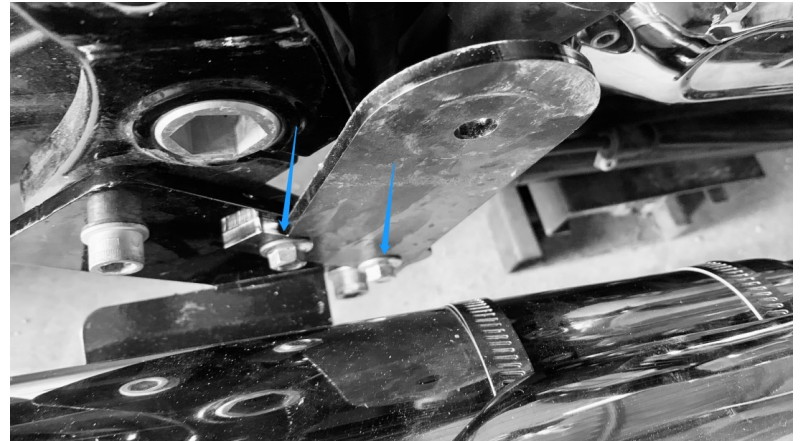


Figure 29

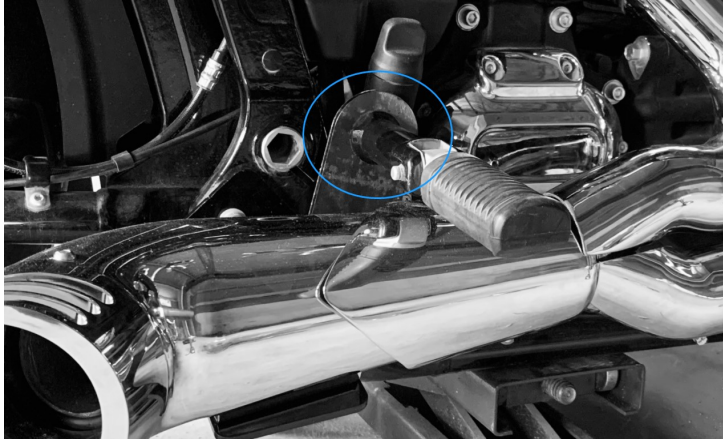


Figure 30



Figure 31

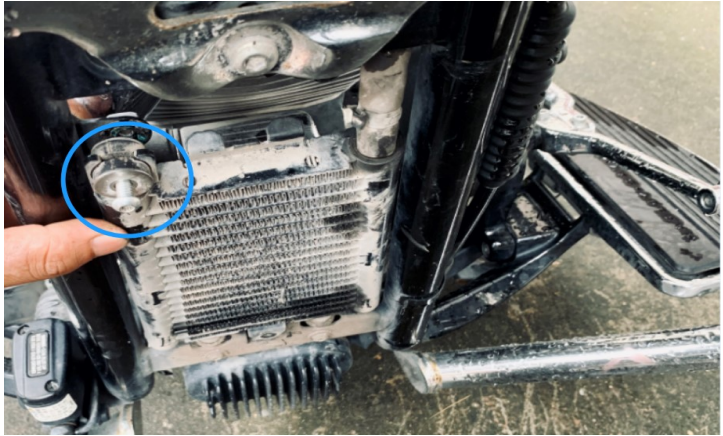


Figure 32



1. Please retuning your motorcycle immediately with Dyna Tuning Map after changing head pipes.
2. Be sure to tighten all hardware before starting your engine.
Retighten after the first 100 miles.

Discoloration: DOES NOT WARRANTY ANY CHROME EXHAUST PRODUCTS AGAINST DISCOLORATION!

Discoloration is not a defect in chrome. All chrome exhaust systems will turn color. Chrome discoloration is a result of heat. The more heat the chrome is exposed to, the quicker and more severe the discoloration will be.

Tuning: It is strongly recommended by SHARKROAD. Better flowing, less restrictive exhaust will require more intake, so please consider upgrading your air cleaner along with your fuel-management system. Working with high-flow intake, Fuel Management system, and correct profession re-mapping, the bike would gain a more better performance.

C.A.R.B.: California does not allow the use of aftermarket exhaust systems that remove original equipment catalyts, (except for racing use only) unless the Air Resources Board has issued an Executive Order for that system.

Returns: When you want to return, please contact us in 72 hours after received the product so we can help you out immediately. We only accept return in 30 days after your order. International Return is not acceptable. For return shipping cost to our warehouse, If the product have quality or shipping damage issue, We will send you shipping label or pay the cost after you send out. If you don't like the product or buy by mistake, Buyer should stand this shipping cost.

Warranty: SHARKROAD products are warranted for one year against defects in material and workmanship. This warranty does not cover chrome discoloration or rust. Also SHARKROAD will not warranty any abused, misused, improperly installed or modified system.

**Wearing a helmet while riding is always recomended.
Please never go for a ride while under the influence of alcohol and/or drugs.
Enjoy the new voice and the fresh look of your motorcycle and ride safe.**