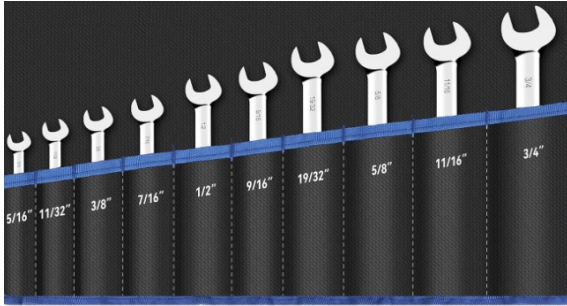




Warning: Our pipes are illegal for EPA, CALIFORNIA and CARB. Only for off-road racing use.

Warning: Checking with your local state and Federal Laws before you take any action on your head pipes. Our exhaust pipes are only for off-road using, not for street riding. Please note.

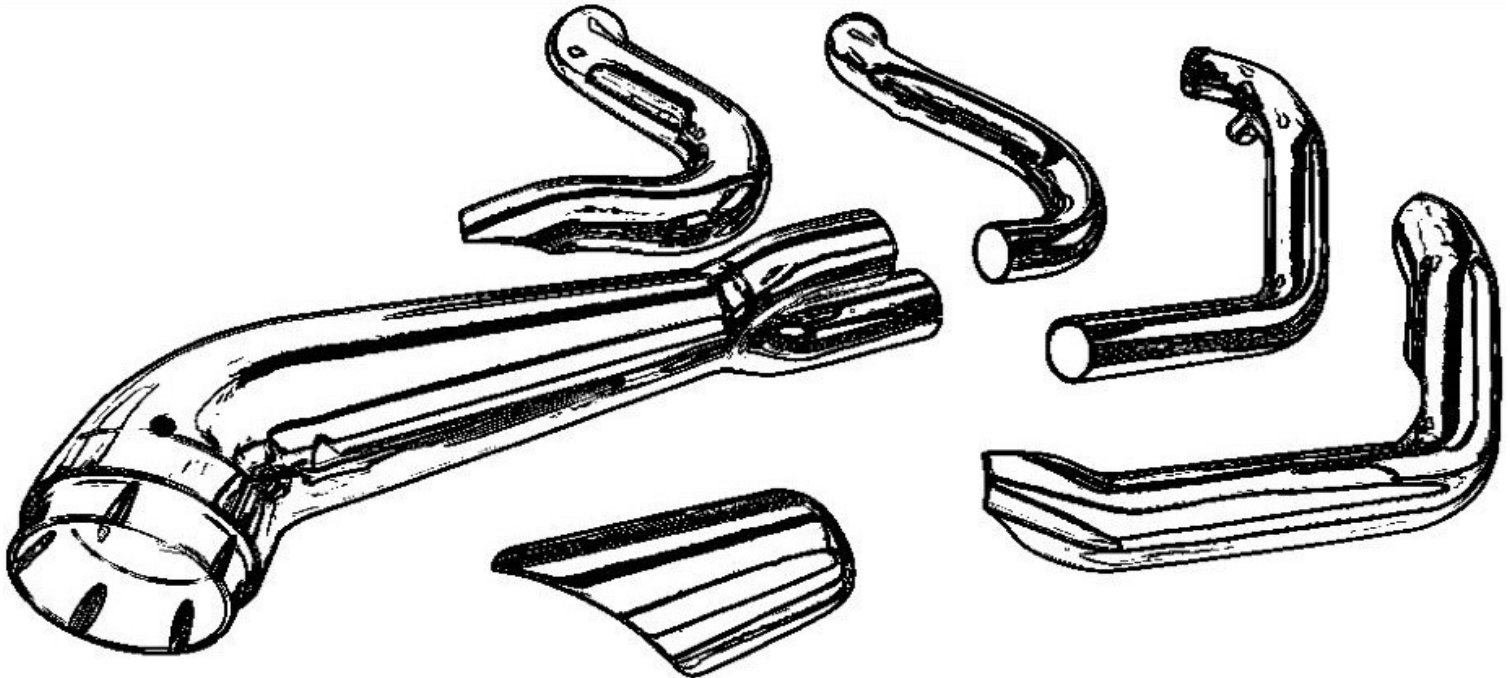
SUGGESTED TOOLS:



COMBINATION WRENCH - 9/16", 1/32"
HEX WRENCH - 5/16"
PHILLIPS SCREWDRIVER - 1/4"
SOCKET WRENCH - 10MM, 13MM



HDEX-19 (2-1 EXHAUST SYSTEM) FOR 2007-2017 HARLEY SOFTAIL PARTIAL MODELS

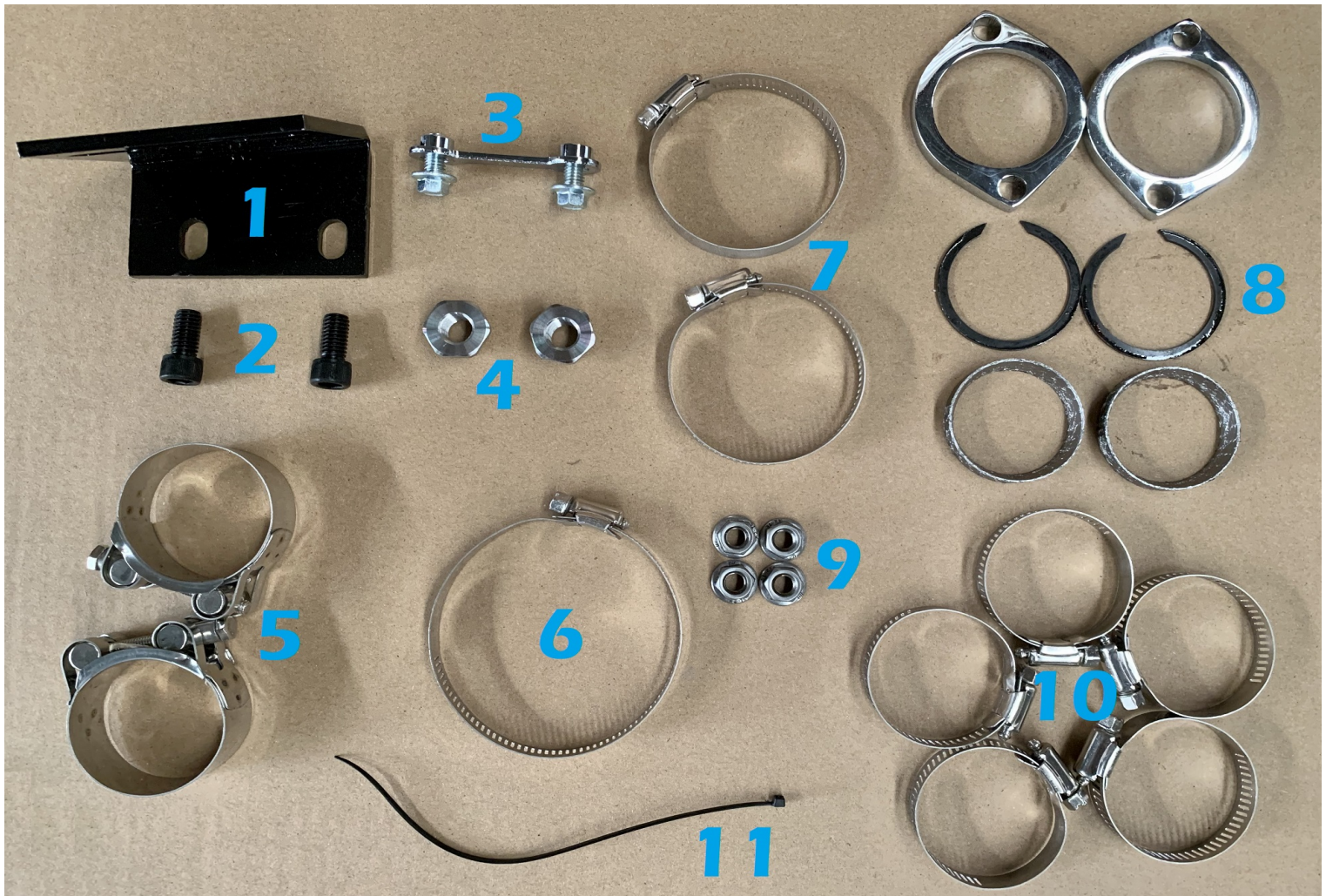


ITEM SUPPLIED:

- 3- HEADER PIPE BODY
- 3- HEAT SHIELD
- 1- BRACKET (COME WITH HARDWARE BAG)
- 1- A PACK OF HARDWARE
- 1- INSTALLATION INSTRUCTION

FITMENT:

FOR 2007-2017 HARLEY SOFTAIL MODELS
NOT FOR SOFTAIL MODELS BEFORE 2007



HARDWARE LIST

**NOTES: O2 sensor plugs are already installed on the head pipes.
Please check them on the headers.**

(1.) 1 * MUFFLER BRAKET FOR EXHAUST BODY	(2.) 2 * 3/8-16*3/4 BOLTS
(3.) 1 * M8 DOG-BONE PLATE WITH BOLTS	(4.) 2 * O2 SENSOR PORT TRANSFER (18MM TO 12MM)
(5.) 2 * 48-51MM CLAMP FOR CONNECT THE EXHAUST BODY TO HEAD PIPES	(6.) 1 * 65-89MM HOSE CLAMP FOR HEAT SHIELD
(7.) 2 * 46-70MM HOSE CLAMP FOR HEAT SHIELD	(8.) 2 * FLANGE KIT, SNAP RING & GASKET
(9.) 4 * ENGINE PORT STUD NUTS	(10.) 5 * 27-51MM HOSE CLAMP FOR HEAT SHIELD
(11.) 1 * ZIP TIE	

Removing the stock exhaust system may vary slightly depending on the specific models. Please refer to the necessary tools or locations based on the specific requirements of the practice bike. Thank you for your cooperation.

Make sure that THE BIKE is completely cooled down before ANY OPERATION.

INSTALLATION INSTRUCTIONS

2-2 EXHAUST SYSTEM FOR 2007-2017 HARLEY SOFTAIL MODELS:

Please use the bolts and nuts come with the pipes.

1. Before taking any action on your bike, please make sure that it is parked correctly to prevent it from falling down while you are pulling or installing the exhausts.

Note: We cannot be held responsible for any injuries that may occur during the installation of pipes or exhausts, as it may vary depending on the condition of the bike or the work site.

2. Before installing the new 2-2 exhaust system, we need to remove the entire stock exhaust system firstly.

3. Release the pins (2 pins/bag) of the saddlebags, then remove the saddlebags carefully. Put them on a carpet or some sort of soft surface from scratching.

Note: Removing the saddle bags is not required. So if you can access to the connection to off the exhaust system, you can leave the saddle bags there.

4. Grab a 15mm (9/16") socket to loosen up the exhaust clamps (A & C) that hold the muffler inlets in place. Then, use a 10.5mm (13/32") wrench to loosen the nuts (B & D) on the muffler bracket. Now, go ahead and twist the muffler backwards to remove it. Be careful not to damage them while doing this. Give it a slight twist and gently pull the muffler out until it slides off the head pipe. Place it aside prevent any scratches. **(Shown in Figure 1/2/3/4)**

5. Loosen the O2 sensor connecting to the stock head pipes with a 9/16" wrench. And put it aside for the new head pipes later using.

6. All right. Then we use a 13mm socket to loosen the studs holding the engine port flanges. **(Shown in Figure 5)**

7. Use a T45 to loosen the stock bracket bolts for the whole exhaust system. And remove the whole side bracket away when nuts off. **(Shown in Figure 6/7/8)**

8. Now we can start putting in the new exhaust system. Please securely attach the new flange kit to the new head pipes. Also, remove the O2 sensor plug that's already attached to the head pipes using a 5/16" Allen Wrench with ball ends. Then, connect the O2 sensor port to the transfer for the 12mm O2 sensor wire using an 11/16" combination wrench. **(Shown in Figure 9/10)**

9. Next, install the bracket using the 3/8-16*3/4" bolts and securely attach it. But hold off on tightening it for now. We'll need to properly align it with the exhaust pipe body later on. **(Shown in Figure 11/12)**

10. Please attach the O2 sensor wire to the port and use a 13mm socket wrench to fasten the head pipes to the engine port with new flange stud nuts. However, do not fully tighten the nuts at this point so that they can be properly aligned with the exhaust body later. **(Shown in Figure 13/14/15/16/17/18)**

11. Ok. Install the 48-51mm clamps onto the exhaust body inlets. Then line them up with the head pipes and slide them forward to fit snugly around the headers. At the same time, locate the mounting holes on the back of the exhaust body to the brackets' mounting holes. **(Shown in Figure 19/20/21)**

12. Fasten them together using the DOG-BONE PLATE and M8 BOLTS. Avoid tightening them completely for now as we need to check for the appropriate gap later on.

(Shown in Figure 22/23)

13. Once you have finished the previous steps, it is now time to inspect the spaces between the exhaust headers, the floorboard, the brake rod, and the engine. Afterward, please securely fasten the 2-1 exhaust system from the engine port to the tip.

(Shown in Figure 24/25/26/27)

14. After that, please be sure to wipe all fingerprints or oil stain off before install the heat-shields into positions.

15. Awesome. We are almost there. After all the previous steps have been made, install the heat-shields into position and tighten it all the way down to the end with a 6mm Philip Driver.

(Shown in Figure 28)

16. Before starting your bike, please check all the bolts, nuts, clamps, and screws, including the heat shields are all tighten down. No rattling sound or other issue.

17. Finally, be sure to wipe all fingerprints or oil stain off after installation, before start the engine.

Note: If you leave a fingerprint to it, the chrome may discolor when it heats up!

HERE ARE PHOTOS FOR YOUR REFERENCE.

Figure 1



Figure 2

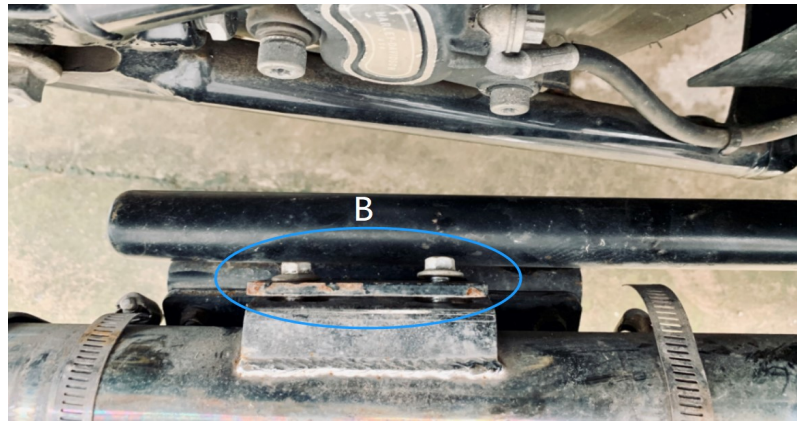


Figure 3

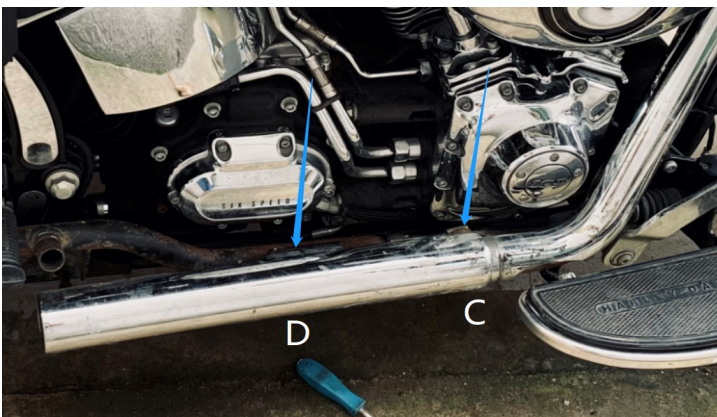


Figure 4

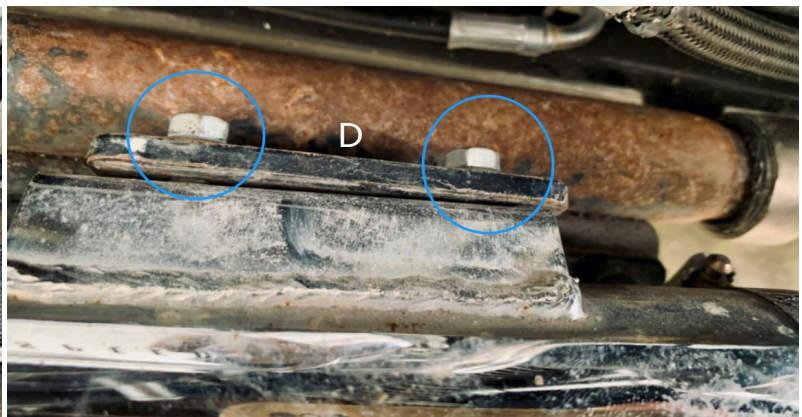


Figure 5

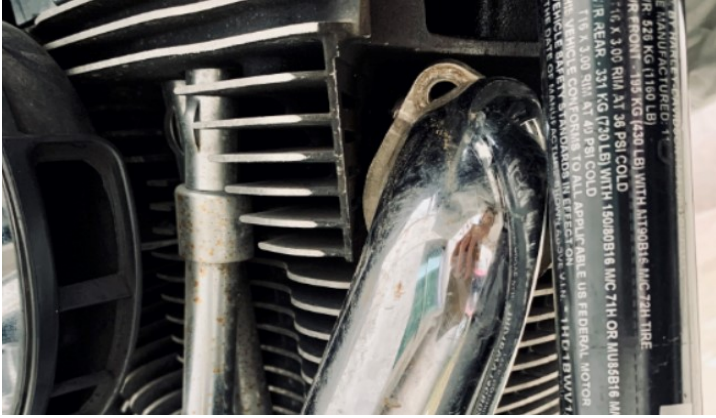


Figure 7



Figure 9

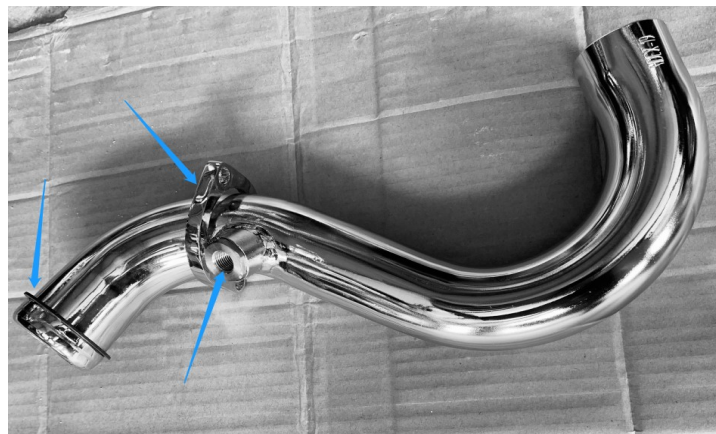


Figure 11

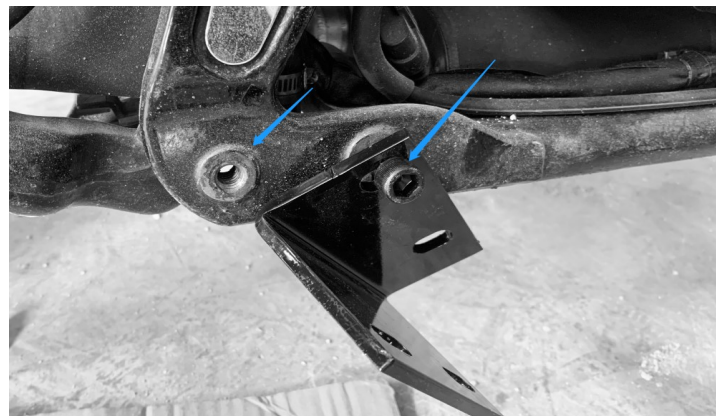


Figure 6



Figure 8

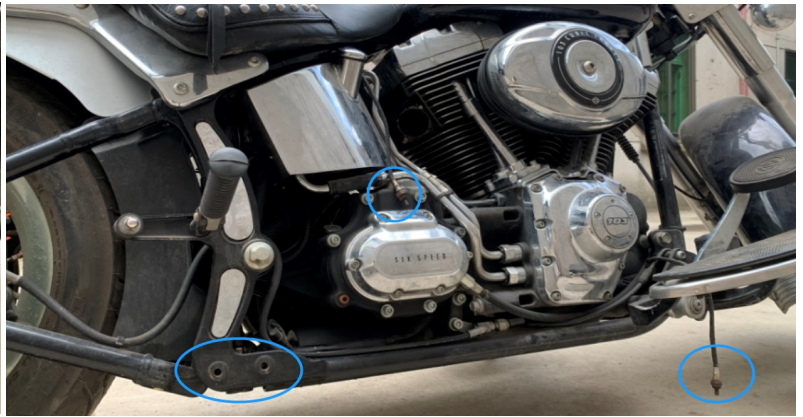


Figure 10

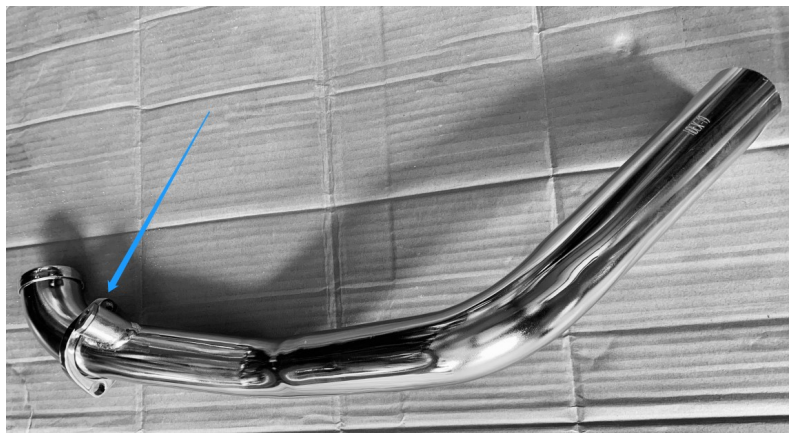


Figure 12



Figure 13



Figure 15



Figure 17



Figure 19



Figure 14



Figure 16



Figure 18



Figure 20



Figure 21

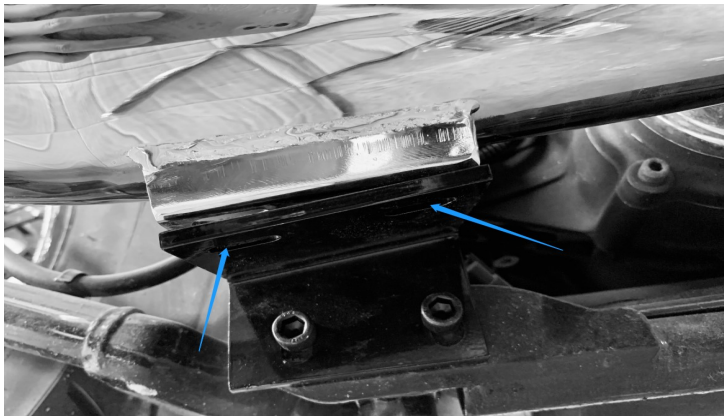


Figure 23

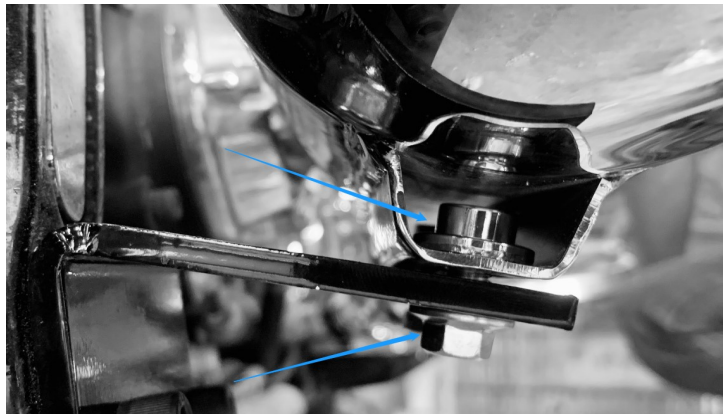


Figure 25

Figure 22



Figure 24



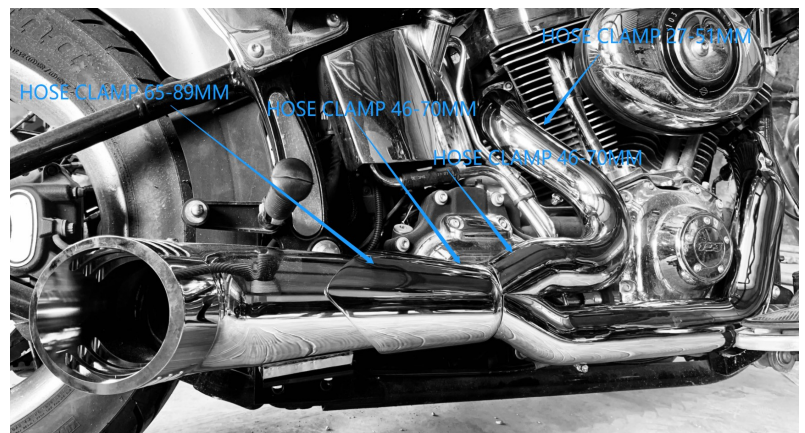
Figure 26



Figure 27



Figure 28



1. Please retuning your motorcycle immediately with Dyna Tuning Map after changing head pipes.

2. Be sure to tighten all hardware before starting your engine. Retighten after the first 100 miles.

Discoloration: DOES NOT WARRANTY ANY CHROME EXHAUST PRODUCTS AGAINST DISCOLORATION!

Discoloration is not a defect in chrome. All chrome exhaust systems will turn color. Chrome discoloration is a result of heat. The more heat the chrome is exposed to, the quicker and more severe the discoloration will be.

Tuning: It is strongly recommended by SHARKROAD. Better flowing, less restrictive exhaust will require more intake, so please consider upgrading your air cleaner along with your fuel-management system. Working with high-flow intake, Fuel Management system, and correct profession re-mapping, the bike would gain a more better performance.

C.A.R.B.: California does not allow the use of aftermarket exhaust systems that remove original equipment catalyts, (except for racing use only) unless the Air Resources Board has issued an Executive Order for that system.

Returns: When you want to return, please contact us in 72 hours after received the product so we can help you out immediately. We only accept return in 30 days after your order. International Return is not acceptable. For return shipping cost to our warehouse, If the product have quality or shipping damage issue, We will send you shipping label or pay the cost after you send out. If you don't like the product or buy by mistake, Buyer should stand this shipping cost.

Warranty: SHARKROAD products are warranted for one year against defects in material and workmanship. This warranty does not cover chrome discoloration or rust. Also SHARKROAD will not warranty any abused, misused, improperly installed or modified system.

Wearing a helmet while riding is always recommended.

Please never go for a ride while under the influence of alcohol and/or drugs.

Enjoy the new voice and the fresh look of your motorcycle and ride safe.