



EXHAUST SYSTEM



TABLE OF CONTENTS

Please visit our website or contact us to get more details.

	FOR MOTORCYCLE MODELS	STYLE	ITEM NO.	PAGE
FOR HARLEY DAVIDSON	UNIVERSAL FOR HD PARTIAL MODELS' <i>FORWARD CONTROL</i>	2-2 EXHAUST SYSTEM	HDEX-01	2-3
			HDEX-02	2-3
	TOURING	TRUE DUAL HEADER	HDEX-11/12	4
			HDEX-13/14	5
		2-1 EXHAUST SYSTEM	HDEX-08/10	6-7
			HDEX-07/09	8-9
			HDEX-15/16	10-11
	SPORTSTER	2-1 EXHAUST SYSTEM	HDEX-05	12
	SOFTAIL	2-1 EXHAUST SYSTEM	HDEX-19/20	13
		2-2 FISHTAIL EXHAUST SYSTEM	HDEX-22	14
			HDEX-23	15
	Dyna	2-1 EXHAUST SYSTEM	HDEX-18	16
	V-ROD V-ROD CVO NIGHT ROD STREET ROD	2-2 EXHAUST SYSTEM	HDEX-21	16-17

DISCLAIMER:

NOT LEGAL FOR SALE OR USE IN CALIFORNIA ON ANY POLLUTION CONTROLLED MOTOR VEHICLES.



FULL EXHAUST SYSTEM

FOR HARLEY SPORTSTER, SOFTIAL, DYNA PARTIAL FORWARD-CONTROL MODELS

2.0" Non-Baffled Thunder Loud Drag Pipes



- . Non-baffled super loud exhaust system.
- . Cost a little, big difference on the sound.
- . Loud pipes save lives in the traffic.
- . 2-2 Independent full exhaust system.
- . Very easy to install with separated pipes.

Part #: HDEX-01C / HDEX-02B / HDEX-02TC

Baffle: **Non-baffled.**

Quiet Baffle Available: N/A.

Loud Level VS Stock: 9/6

Sold in Units: **1 set.**

Hardware: ✓

Heat-Shield Tape: **01 Series Without Heat Shield Tape.**

02 Series With Heat Shield Tape.

Fitment: For 1984-Later Harley Sportster, Dyna, Softail Partial
Models With **Forward-control.**





PART#	DESCRIPTION	MSRP -\$	PART#	DESCRIPTION	MSRP -\$
HDEX-01C	Chrome Drag Pipes without Heat Shield Tape	139	HDEX-01B	Black Drag Pipes without Heat Shield Tape	139
HDEX-02C	Chrome Drag Pipes with Black Heat Shield Tape	149	HDEX-02B	Black Drag Pipes with Black Heat Shield Tape	149
HDEX-02TC	Chrome Drag Pipes with Titanium Heat Shield Tape	159	HDEX-02TB	Black Drag Pipes with Titanium Heat Shield Tape	159



EXHAUST TRUE DUAL HEADER

FOR HARLEY DAVIDSON TOURING 1995-2008 / 2009-2016

Better Performance True Dual Exhaust Headers With Full-coverage Heat Shield



- . Breathe easier, perform better.
- . Run cooler, go faster with Heat-shield.
- . Get more high-end power and torque.
- . 1/2 budget of big brands=No-overpay for a name.
- . Easy to instll spearated pipes.

Part #: HDEX-11B (CHROME pipes with BLACK heat shields)

Performance VS Stock: 8/5

Sold in Units: 1 SET (Crossover Pipe with 4 mounting tabs)

Heat Shield: ✓

Hardware: Default

Fitment: For 1995-2008 Harley Touring (NOT FOR TRIKE).

Part #: HDEX-12C (CHROME pipes & heat shields)

Performance VS Stock: 8/5

Sold in Units: 1 SET
(Crossover Pipe without mounting tab)

Heat Shield: ✓

Hardware: Default

Fitment: For 2009-2016 Harley Touring
(NOT FOR TRIKE).



PART#	DESCRIPTION	MSRP -\$	PART#	DESCRIPTION	MSRP -\$
HDEX-11C	Chrome Headers & Heat Shields for 1995-2008 Touring	499	HDEX-11B	Chrome Headers & Black Heat Shields for 1995-2008 Touring	499
HDEX-12C	Chrome Headers & Heat Shields for 2009-2016 Touring	499	HDEX-12B	Chrome Headers & Black Heat Shields for 2009-2016 Touring	499



EXHAUST TRUE DUAL HEADER

FOR HARLEY DAVIDSON TOURING 1995-2016



Mufflers sold separated

Better Performance Exhaust Headers With Full-coverage Heat Shield

- . Let your bike breathe easier, perform better.
- . Run cooler, go faster with Heat-shield.
- . Get more high-end power and torque.
- . 1/2 budget of big brands=no over pay for a name.
- . Easy to instll spearated pipes.

Part #: **HDEX-13C**

Performance VS Stock: **8/5**

Sold in Units: **1 set**

Heat Shield:

Hardware: **Default**

Fitment: **For 1995-2016 Harley Touring, EXCEPT TRIKE**



PART#	DESCRIPTION	MSRP -\$
HDEX-13C	Chrome Headers W/ Chrome Heat Shields	449

PART#	DESCRIPTION	MSRP -\$
HDEX-13B	Chrome Headers W/ Black Heat Shields	449

EXHAUST TRUE DUAL HEADER

FOR HARLEY DAVIDSON TOURING 2017-UP



Mufflers sold separated

Better Performance Exhaust Headers With Full-coverage Heat Shield

- . Let your bike breathe easier, perform better.
- . Run cooler, go faster with Heat-shield.
- . Get more high-end power and torque.
- . 1/2 budget of big brands=no over pay for a name.
- . Fit perfect and like custom made.

Part #: **HDEX-14C**

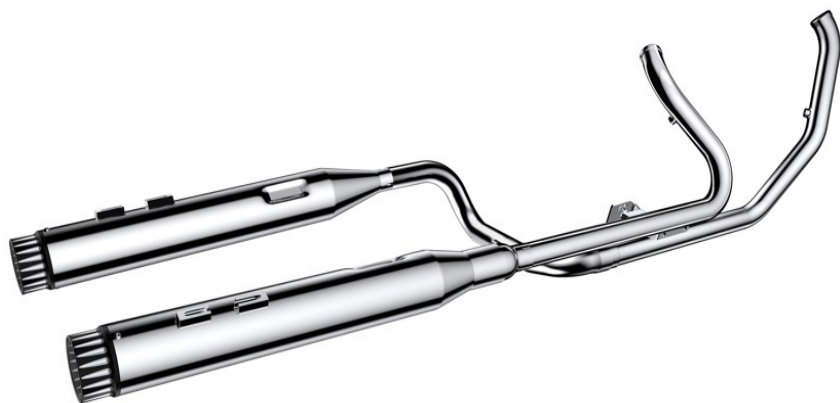
Performance VS Stock: **8/5**

Sold in Units: **2**

Heat Shield:

Hardware: **Default**

Fitment: **For 2017-Later Harley Touring, EXCEPT TRIKE**



PART#	DESCRIPTION	MSRP -\$
HDEX-14C	Chrome Headers W/ Chrome Heat Shields	499

PART#	DESCRIPTION	MSRP -\$
HDEX-14B	Chrome Headers W/ Black Heat Shields	499



FULL EXHAUST SYSTEM

FOR HARLEY DAVIDSON TOURING 1995-2016

Great Sound 2-Into-1 Exhaust System With Muffler for Harley Touring Models



- . Performs better for increased torque and HP.
- . Amazing deep rumble tone for your Harley.
- . 1/2 budget of big brands'.
- . Big bang for your bucks.
- . Fit perfect and like custom made.



Part #: HDEX-08B

(4.0" Muffler W/ Black Heat Shield and Chrome pipe)

HDEX-10C

(4.4" Muffler W/ Chrome Heat Shield and Chrome pipe)

Engine Port Inlet: Left-1.75" & Right-1.75"

Muffler Pipe Diameter: 4.0" or 4.4"

Muffler Length: 27"

Baffles: ✓

Baffles Removable: ✓

Performance VS Stock: 8/7

Sound Tone: **Deep Rumble**

Loud Level VS Stock: 8/6

Heat Shield: ✓

Fitment: For 1995-2016 Harley Touring, Except Trike Models

Sold in Units: 1 SET





CUSTOM STYLE MUFFLERS OF 4.0" OR 4.4" MEGAPHONE-STYLE:



Part #:08C



Part #:08B



Part #: 10C



Part #: 10B

PART#	DESCRIPTION	MSRP -\$
HDEX-08C	Chrome Pipe W/ Chrome 4.0" Muffler and Chrome Heat Shields	499
HDEX-10C	Chrome Pipe W/ Chrome 4.4" Megaphone Muffler and Chrome Heat Shields	549

PART#	DESCRIPTION	MSRP -\$
HDEX-08B	Chrome Pipe W/ Black 4.0" Muffler and Black Heat Shields	499
HDEX-10B	Chrome Pipe W/ Black 4.4" Megaphone Muffler and Black Heat Shields	549



FULL EXHAUST SYSTEM

FOR HARLEY DAVIDSON TOURING 2017-LATER

Amazing Rumble Sound 2-Into-1 Exhaust System With Muffler for Harley Touring Models



- . Performs better for increased torque and HP.
- . Amazing deep rumble tone for your Harley.
- . 1/2 budget of big brands'.
- . Big bang for your bucks.
- . Fit perfect and like custom made.

Part #: HDEX-07C

(4.0" Muffler W/ Chrome Heat Shild and Chrome pipe)

HDEX-09C

(4.4" Muffler W/ Chrome Heat Shild and Chrome pipe)

Engine Port Inlet: Left-1.75" & Right-1.75"

Muffler Pipe Diameter: 4.0" or 4.4"

Muffler Length: 27"

Baffles: ✓

Baffles Removable: ✓

Performance VS Stock: 8/7

Sound Tone: **Deep Rumble**

Loud Level VS Stock: 8/6

Heat Shield: ✓

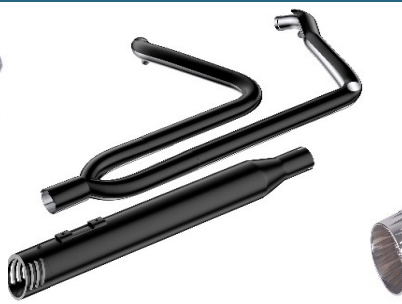
Fitment: **For 2017-Later Harley Touring,
Except Trike Models**

Sold in Units: **1 SET**





CUSTOM STYLE MUFFLERS OF 4.0" OR 4.4" MEGAPHONE-STYLE:



Part #:07C Part #:07B Part #: 09C Part #: 09B

PART#	DESCRIPTION	MSRP -\$
HDEX-07C	Chrome Pipe W/ Chrome 4.0" Muffler and Chrome Heat Shields	499
HDEX-09C	Chrome Pipe W/ Chrome 4.4" Megaphone Muffler and Chrome Heat Shields	549

PART#	DESCRIPTION	MSRP -\$
HDEX-07B	Chrome Pipe W/ Black 4.0" Muffler and Black Heat Shields	499
HDEX-09B	Chrome Pipe W/ Black 4.4" Megaphone Muffler and Black Heat Shields	549



FULL EXHAUST SYSTEM

FOR HARLEY DAVIDSON TOURING 1995-2016 OR 2017-LATER

Turn-out Style 2-Into-1 Exhaust System for Harley Touring Models



- . Get compliments for an attractive appearance.
- . Better performance, nice rumble tone.
- . 1/2 budget of big brands'.
- . Big bang for your bucks.
- . Fit perfect and like custom made.

Part #: HDEX-15CC-29B

(Chrome Pipes W/ Chrome Heat Shields and No. 29 Black Tip)

HDEX-16BB-20B-TC

(Ceramic Black Pipes W/ Heat Shields and No. 20 Black Tip)



Baffles: ✓

Baffles Removable: **Yes.**

Performance VS Stock: **8.5/7**

Sound Tone: **Deep Rumble**

Loud Level VS Stock: **8/6**

Heat Shield: ✓

Fitment: HDEX-15 Series are for 1995-2016 Touring. HDEX-16

Series are for 2017-Later Harley Touring, Except Trike Models

Sold in Units: **1 SET**





CUSTOM STYLE TIPS:



NO.: 20C

NO.: 20B

NO.: 21C

NO.: 21B

NO.: 29B

PART#	DESCRIPTION	MSRP -\$
HDEX-15CC-20C	Chrome Pipes W/ Chrome Heat Shields and No.20 Chrome Tip for 1995-2016 Touring	599
HDEX-15CC-21C	Chrome Pipes W/ Chrome Heat Shields and No.21 Chrome Tip for 1995-2016 Touring	599
HDEX-15CC-29B	Chrome Pipes W/ Chrome Heat Shields and No.29 Black Tip for 1995-2016 Touring	599
HDEX-15BB-21B-TC	Ceramic Black Pipes W/ Black Heat Shields and No.21 Black Tip for 1995-2016 Touring	599
HDEX-16CC-20C	Chrome Pipes W/ Chrome Heat Shields and No.20 Chrome Tip for 2017-up Touring	599
HDEX-16CC-21B	Chrome Pipes W/ Chrome Heat Shields and No.21 Black Tip for 2017-up Touring	599
HDEX-16BB-20B-TC	Ceramic Black Pipes W/ Black Heat Shields and No.20 Black Tip for 2017-up Touring	599
HDEX-16BB-29B-TC	Ceramic Black Pipes W/ Black Heat Shields and No.29 Black Tip for 2017-up Touring	599

PART#	DESCRIPTION	MSRP -\$
HDEX-15CC-20B	Chrome Pipes W/ Chrome Heat Shields and No.20 Black Tip for 1995-2016 Touring	599
HDEX-15CC-21B	Chrome Pipes W/ Chrome Heat Shields and No.21 Black Tip for 1995-2016 Touring	599
HDEX-15BB-20B-TC	Ceramic Black Pipes W/ Black Heat Shields and No.20 Black Tip for 1995-2016 Touring	599
HDEX-15BB-29B-TC	Ceramic Black Pipes W/ Black Heat Shields and No.29 Black Tip for 1995-2016 Touring	599
HDEX-16CC-21C	Chrome Pipes W/ Chrome Heat Shields and No.21 Chrome Tip for 2017-up Touring	599
HDEX-16CC-29B	Chrome Pipes W/ Chrome Heat Shields and No.29 Black Tip for 2017-up Touring	599
HDEX-16BB-21B-TC	Ceramic Black Pipes W/ Black Heat Shields and No.21 Black Tip for 2017-up Touring	599



FULL EXHAUST SYSTEM

FOR HARLEY SPORTSTER 1986-UP FORWARD-CONTROL MODELS

Stepped Non-Baffled Extremely Loud Exhaust Drag Pipes



- . Non-baffled = Super Loud.
- . Stepped design = HP & Torque increased.
- . Independent pipes = Very easy to install.
- . New looking, aggressive voice = Good value.
- . Only for forward-control Sportster bikes.

Part #: HDEX-05C / B

Loud Level VS Stock: 9/6

Sold in Units: 1 SET

Hardware: ✓

Heat-Shield: X

Fitment: For 1986-up Harley Davidson Sportster Partial Models

Only For Forward-control Bikes



PART#	DESCRIPTION	MSRP -\$
HDEX-05C	Chrome Turn-out Drag Pipes	249

PART#	DESCRIPTION	MSRP -\$
HDEX-05B	Black Turn-out Drag Pipes	249



FULL EXHAUST SYSTEM

FOR HARLEY DAVIDSON SOFTAIL 1986-2017 FORWARD-CONTROL MODELS

Head-turning Rumble Sound 2-1 Exhaust System For 1986-2017 Softail Models



- . True-dual headers = Breathe easier.
- . Stepped design = Big change in the sound.
- . Cost 1/2 budget = Good value, good deal.
- . Only for forward-control Softail bikes.
- . Easy to install with separated head pipes.

Part #: **HDEX-19CC-20C**

Loud Level VS Stock: **8/6**

Sold in Units: **1 Set With Heat Shield**

Hardware: **Defaulted.**

Heat-Shield: **Yes.**

Fitment: **For 1986-2017 Harley Davidson Softail Partial Models**

PART#	DESCRIPTION	MSRP -\$	PART#	DESCRIPTION	MSRP -\$
HDEX-19CC-20C	Chrome Pipes W/ Chrome Heat Shields & No.20 Chrome Tip	599	HDEX-19CC-29B	Chrome Pipes W/ Chrome Heat Shields & No.29 Black Tip	599
HDEX-19BB-20B	Black Pipes W/ Black Heat Shields & No.20 Black Tip	599	HDEX-19BB-29B	Black Pipes W/ Black Heat Shields & No.29 Black Tip	599

FULL EXHAUST SYSTEM

FOR HARLEY DAVIDSON SOFTAIL 2018-UP FORWARD-CONTROL MODELS

Boost Compliments 2-1 Exhaust Full System for 2018-up Softail Models



- . Attractive appearance.
- . Better rich sound than stock.
- . 1/2 of big brands' price = Cost less, gain more.
- . Only for forward-control Softail bikes.
- . Fit perfect and like custom made.

Part #: **HDEX-20CC-29B**

Loud Level VS Stock: **8/6**

Sold in Units: **1 Set With Heat Shield**

Hardware: **Defaulted.**

Heat-Shield: **Yes.**

Fitment: **For 2018-up Harley Davidson Softail Partial Models**

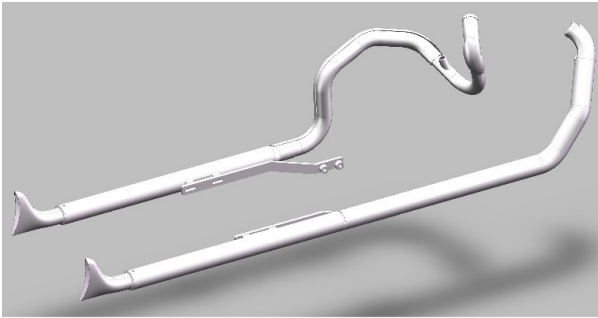
PART#	DESCRIPTION	MSRP -\$	PART#	DESCRIPTION	MSRP -\$
HDEX-20CC-20C	Chrome Pipes W/ Chrome Heat Shields & No.20 Chrome Tip	599	HDEX-20CC-29B	Chrome Pipes W/ Chrome Heat Shields & No.29 Black Tip	599
HDEX-20BB-20B	Black Pipes W/ Black Heat Shields & No.20 Black Tip	599	HDEX-20BB-29B	Black Pipes W/ Black Heat Shields & No.29 Black Tip	599



FULL EXHAUST SYSTEM

FOR HARLEY DAVIDSON SOFTAIL MODEL

Unique Amazing Sound for Softail Models Shark Tail Style True Dual Full Exhaust System



- . Baffled straight exhaust system = Loud rumble.
 - . Classic old school style = Back to glory time.
 - . Fishtail style exhaust muffler = Attractive.
 - . True dual headers = More air flow.
- 1/2 of big brands' = Quality at reasonable price.**

Part #: **HDEX-22C-36**

Loud Level VS Stock: **8.5/6**

Sold in Units: **1 Set With Heat Shield**

Hardware: **Defaulted.**

Heat-Shield: **Yes.**

Fitment: **For 2007-2017 Harley Davidson Softail Models**



PART#	DESCRIPTION	MSRP -\$
HDEX-22C-36	Chrome 2-2 Full Exhaust System with 36" fishtail mufflers for 2007-2017 Softail	699

PART#	DESCRIPTION	MSRP -\$
HDEX-22C-39	Chrome 2-2 Full Exhaust System with 39" fishtail mufflers for 2007-2017 Softail	699



FULL EXHAUST SYSTEM

FOR HARLEY DAVIDSON SOFTAIL MODEL

Unique Amazing Sound for Softail Models True Dual Shark Tail Style Full Exhaust System

- . Baffled straight exhaust system = Loud rumble.
 - . Classic old school style = Back to glory time.
 - . Fishtail style exhaust muffler = Attractive.
 - . True dual headers = More air flow.
- 1/2 of big brands' = Quality at reasonable price.



Part #: **HDEX-23C-36**

Loud Level VS Stock: **8.5/6**

Sold in Units: **1 Set With Heat Shield**

Hardware: **Defaulted.**

Heat-Shield: **Yes.**

Fitment: **For 2018-LATER Harley Davidson Softail Models**



**SIMILAR TO THIS ONE AFTER INSTALLATION.
FISHTAIL MUFFLERS ARE NOT THE SAME**

PART#	DESCRIPTION	MSRP -\$
HDEX-23C-36	Chrome 2-2 Full Exhaust System with 36" fishtail mufflers for 2018-up Softail	699

PART#	DESCRIPTION	MSRP -\$
HDEX-23C-39	Chrome 2-2 Full Exhaust System with 36" fishtail mufflers for 2018-up Softail	699



FULL EXHAUST SYSTEM

FOR HARLEY DAVIDSON DYNA 1986-2017 FORWARD-CONTROL MODELS

Good looking and Amazing Sound 2 Into1 Exhaust System for Dyna Models



- . Give your Dyna a new rumble voice.
- . Louder than stock, but not obnoxious.
- . Cost a little money, a big change on the sound.
- . Old bike, new looking.
- . Only for forward-control Dyna bikes.

Part #: **HDEX-18CC-29B**

Loud Level VS Stock: **8.5/6**

Sold in Units: **1 Set with Heat Shield**

Hardware: **✓**

Heat-Shield: **Yes.**

Fitment: **For 1986 - 2017 Harley Davidson Dyna Models.**

ONLY FOR Forward-control Bikes

PART#	DESCRIPTION	MSRP -\$	PART#	DESCRIPTION	MSRP -\$
HDEX-18CC-20C	Chrome Pipes & Heat Shields with No. 20 Chrome End Cap	599	HDEX-18CC-29B	Chrome Pipes & Heat Shields with No. 29 Black End Cap	599
HDEX-18BB-20B	Black Pipes & Heat Shields with No. 20 Chrome End Cap	599	HDEX-18BB-29B	Black Pipes & Heat Shields with No. 29 Black End Cap	599

FULL EXHAUST SYSTEM

FOR HARLEY DAVIDSON V-ROD, V-ROD CVO, NIGHT ROD AND STREET ROD

Nice Rich Sound with Baffles 2 Into 2 Exhaust Pipes For Harley V-ROD, V-ROD CVO, NIGHT ROD, STREET ROD



- . Your muscle bike needs a fine rich sound.
- . Perform better with true dual headers.
- . Good looking, amazing sound.
- . A little cost, a big gain.
- . Fit perfect and like custom made.

Part #: **HDEX-21B**

Loud Level VS Stock: **9/6**

Sold in Units: **2**

Hardware: **✓**

Heat-Shield: **YES.**

Fitment: **For 2002-2017 Harley Davidson V-rod, V-rod CVO, Night-rod, and Street Rod models**





PART#	DESCRIPTION	MSRP -\$
HDEX-21C	Chrome 2-2 Exhaust Pipes for V-ROD, V-ROD CVO, NIGHT ROD, STREET ROD models	499

PART#	DESCRIPTION	MSRP -\$
HDEX-21B	Black 2-2 Exhaust Pipes for V-ROD, V-ROD CVO, NIGHT ROD, STREET ROD models	499





WWW.SHARKROAD.COM

