

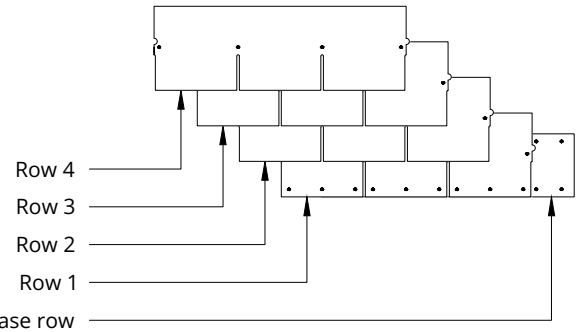
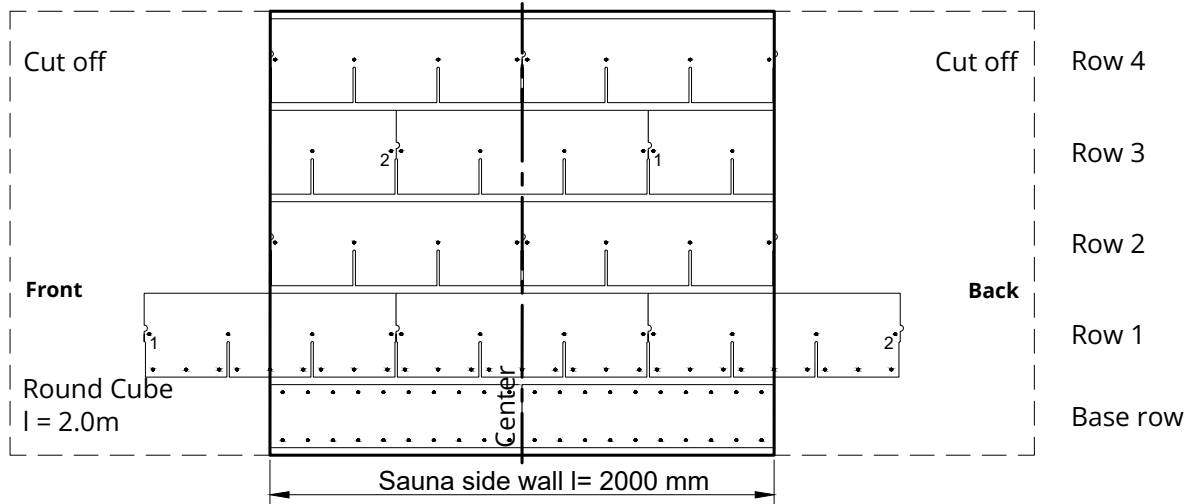
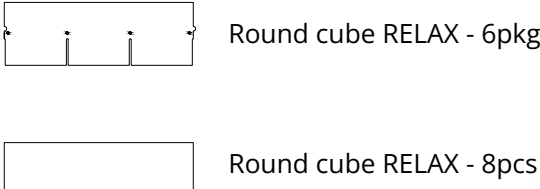
Katepal 3T Rectangle bitumen roof sheet row arrangement for Round Cube RELAX

The base row is installed first, then the first row, etc. up in the middle of the sauna. The sheets that remain over the edge of the sauna wall are cut off and, if possible, used for other rows.

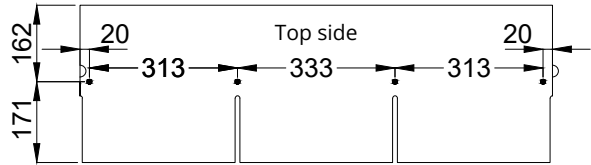
The base row starts at the front end and offset from the front end of the sauna, row 1 always starts in the middle, the other rows are offset from the middle.

For row 1, use nails to fix the lower end, and for row 2, use the included bitumen silicone. Subsequent rows from the second row do not need fix from lower end.

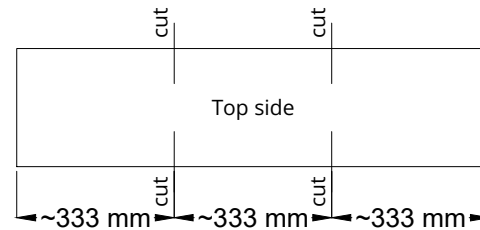
The layout pattern repeats every 4 rows.



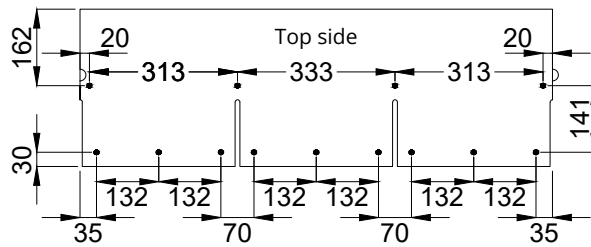
Katepal 3T Rectangle Bitumen roof sheet cutting and nailing.



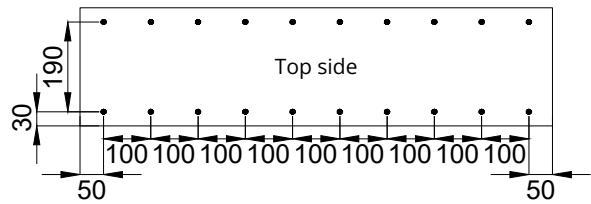
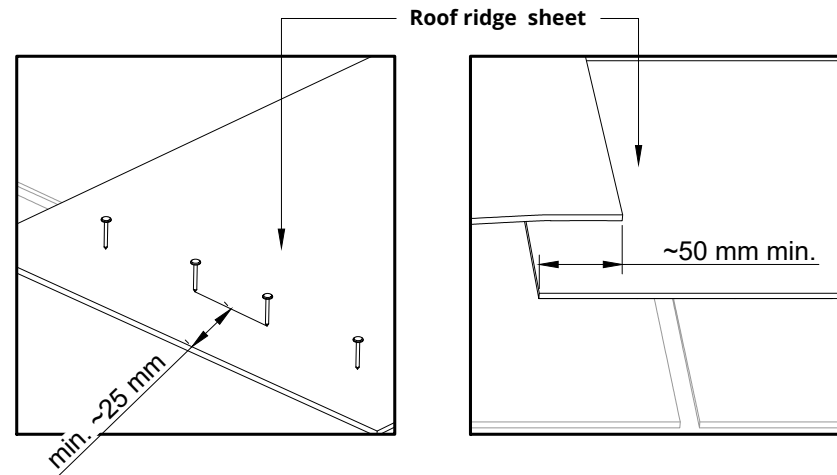
Row 2....



Roof ridge



Row 1



Base row