

# PET MY PET COMMAND

# PROFESSIONAL DOG CLIPPER

## Use & Care Instructions



**MODEL  
# MPC15DS**

www.mypetcommand.com  
Email :- Sales@mypetcommand.com  
Tel USA:- 888 686 6495  
Tel Australia:- 1300 416 703  
Tel UK:- 020 3936 1156

## PROFESSIONAL DOG GROOMING KIT USE & CARE INSTRUCTIONS

Congratulations on Purchasing the MPC15DS professional dog clipper Kit. Please read the following instructions in their entirety before using the Professional Grooming clipper. This appliance is designed to be used for commercial or home use. Basic precautions should always be followed and not to be used by Children.

### DANGER

To reduce the risk of electric shock-Do not reach for an appliance that has fallen into water. Unplug immediately. Keep the cord away from heated surfaces. Do not pull, twist or wrap the cord.

### WARNING

1. Only use this appliance for its intended use as described in this manual. Do not use attachments not specified by the manufacturer. Never use this appliance if it has a damaged cord or plug or if it is not working correctly. Do not allow children or persons with limited physical, sensory or mental capabilities or unauthorized people to use this appliance.
2. This appliance is intended for clipping and trimming animals. Only to be used on clean, dry coats. Leave in a secure working environment that is not exposed to the weather and unsupervised persons.
3. Do not disassemble the appliance yourself. Do not clean the appliance with water. Do not charge the appliance in an environment above 40 degrees and below zero. The appliance may get hot during use or while charging. This is normal.

### CAUTIONS

Oil blades frequently. One Bottle of Standard Clipper oil is provided with the Kit and purchase additional standard clipper white oil as required. Clean blades after use, to keep it working smoothly and efficiently.

### COMPONENTS SUPPLIED IN YOUR KIT

- 1 x MPC15DS Clipper Machine with Charging Base and power adapter
- 1 x 10F Blade with 1 Bottle of oil
- 4 Blade Guides (13,10,6,9 mm)
- Cleaning Brush
- Nail File and Nail Clipper
- Comb Brush and Scissors
- 1 x Carrying Case



Please Note the Following important Points

- Use the Guides with # 10F Blade ONLY.
- MPC15DS uses specific D Type Nano Titanium Blades supplied by us only and the Kit is supplied with # 10 Blade only. Using the Kit with # 10 Blade and Chosen length Guide will be

good enough to Handle most clippings for Home use. If you are a professional Groomer and require other Blades to fit onto the Machine, We do sell these Blades Separately and Search online for MPC15DS replacement Blades or contact us for information where to get them from.

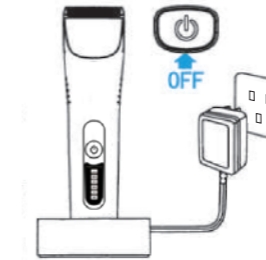
## SAVE THESE INSTRUCTIONS OPERATING INSTRUCTIONS & APPLIANCE SPECIFICATIONS

Charging time: 3 hours	Operation time: 6 hours
#10 Blade width: 49mm	SPM: 8,000 SPM
Product Power: 15W. approx. 55 Dbs. Noise level	
Charger: Input AC 100-240V 50/60Hz Output 5V DC 1000MA	
Battery: 3.7V, 2600mAh Lithium ion rechargeable battery	
Dimensions: 17 (H) x 2.9 (B) x 3 (D) cm	Weight: 254 grams
Replacement blades: #40, #30, #10, #7F, #5F, #4F, #3F (Sold Separably)	

Use only with accessories included in the package or recommended by the manufacturer. Except when charging, always unplug from the electrical source after use. Keep away from water. The charging adapter must be kept dry at all times.

### CHARGING METHOD

1. Insert the charger connection plug into the socket of the charging adapter.
2. Plug the charger into the power socket.
3. Make sure the plug socket is in the OFF position and put it into the charging adapter base.
4. When the charging indicator light is on, it indicates that it is charging.



Please note you are able to operate the Clipper on Corded Basis if required by connecting the cable to the Clipper Directly in situations where your Battery is depleted and you wish to Run the Clipper via Corded power.

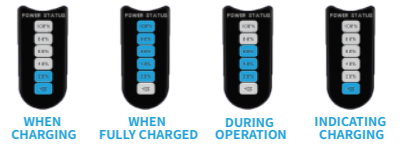
Also please note that MPC15DS has Power Controller IC Chip which will deliver the same level of power to the Blades irrespective of the Battery level which allows consistent clipping even with low Battery Level. When the IC Chip Controller determines that the Battery power is too low to deliver sufficient power for clipping operations, Unit will shut down completely and will require a Recharge or you can run it off Corded power at that point if required.

5. When all five indicators are green and the charging indicator is off, it means that it is fully charged. After it has reached full charge, the clipper will automatically start the overcharge protection function. Turn it off, to protect the battery life.

### POWER INDICATOR FUNCTION

Two functions of the Power Indicator.

1. Indicates the charging capacity during charging.
2. Shows the remaining battery capacity.



### CAUTION

Do not overcharge. It takes three hours to charge your appliance. Charging over 36 hours may shorten the life of the battery.

### WARNING

Do not attempt to unscrew any part of the appliance.

### HOW TO INSERT AND REMOVE BLADES

Before removing the blade, please make sure your clipper is switched "OFF".

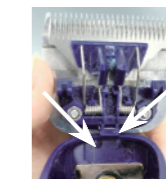
Your Clipper Kit comes with # 10(1.5mm) and 4 Blade guides ranging from 3-13mm which gives you good flexibility of cutting various hair lengths for your pet. Removing and inserting the blade is Necessary for general cleaning and when you are replacing any blades. Please note your MPC15DS uses specific type blades only available from My Pet Command. Other Blade sizes are also available for this clipper and check with My Pet Command or on the website if you require to get any other blades.



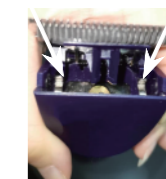
### Additional Blades available if required

### INSTALLING THE BLADE

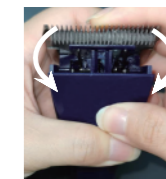
- Step 1: Align the Base of the Blade fitting so it fits into the convex of the Clipper Head as shown
- Step 2: Line up the two sides of blade plastic clips to the 2 Metal Brackets on the clipper head
- Step 3: Push the blade firmly so it clicks into place firmly onto the brackets
- Step 4: Switch on the clipper to Check Blade operates correctly. Done



Step 1



Step 2



Step 3



Step 4

### Removing Blades

**Step 1:** Push the Metal blade head forward with both thumbs

**Step 2:** With one hand hold and catch the blade to avoid it falling and getting damaged.



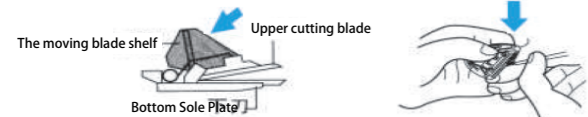
Step 1

Step 2

Clean the blade with the cleaning brush provided, making sure hair is removed between the two cutting blades. Do not disassemble the clipper blade, this can only be done by a professional engineer.

### NOTE

Hair may accumulate in the front cavity of the housing under the blade. If this happens, you can clean the hair by brushing out the cavity with the small brush provided.



After cleaning the blade, always apply 1-2 drops of oil as shown in the picture.



Insert the tab at the end of the clipper blade into the matching recess of the clipper and push up the blade until it snaps into place.

### LUBRICATING AND CLEANING THE BLADE

Blades should be oiled before, during and after each use. If your clipper blades leave lines or slows down, it's a sign that your blades need oiling. Place a few drops of oil on the front and side of the cutter blades. Turn your clipper off and remove the blade. With the cleaning brush remove excess hair and dirt that has accumulated between the blades. Apply some oil and then place back onto the clipper.

If upon cleaning your blades will still not cut, you will need to send to a professional engineer for sharpening.

The service life of the blade may be shortened in the following situations:

1. The blade is not lubricated properly on a regular basis.
2. The blade is being used on wet, dirty hair.
3. A foreign object damages the blade edge
4. The blade has been dropped.

### BATTERY LIFE

The service life of the battery may be shortened in the following situations:

1. The battery is stored in humid damp surroundings.
2. The battery is over charged.
3. The clipper is always plugged in.
4. The clipper has not been charged for more than 6 months.
5. When not in use we recommend to recharge the appliance at least every 3 months.

### HOW TO USE THE CLIPPER

The Professional Grooming Clipper can be used to clip with or against the direction of the coat. The blade that is provided in this kit with provide a medium cut length of 1.5mm and use appropriate guides as required

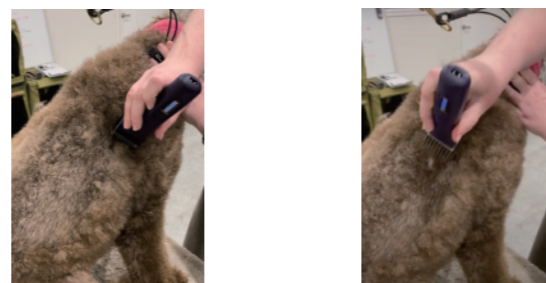
Clipping without using the Guides refer to pictures Below



Use Guides for further lengths Or you can purchased additional Blades sold Separately  
■ #40 0.25mm ■ #30 0.5mm ■ #10 1.5mm ■ #7F 3.2mm ■ #5F 6.4mm  
■ #4F 9.6mm ■ #3F 13mm.

### CLIPPING WITH GUIDES

Insert appropriate Guide on # 10F Blade only and see example to how to Clip.



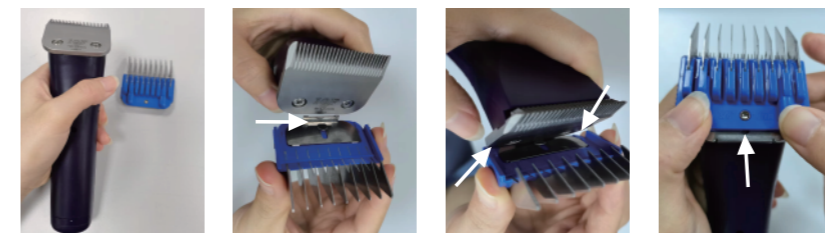
Depending on the required look, the higher the number, shorter the cut. Lower the number, longer the cut. The #10 is compatible with A5 Metal Attachment Combs.

For the best finish, guide the clipper through the coat. Do not force the clipper, as it will cause an uneven cut, and the blades will jam.

### GUIDE COMB INSTRUCTION

#### INSERT GUIDE COMB

1. Hold the clipper like the picture1 shows.
2. Hold the clipper in left hand and guide comb in right hand. Clamp guide comb metal bayonet to the bottom of cutter blade, aligned left and right. See Figure 2-3.
3. Press the bottom of the guide comb with two thumbs, push up and release both thumbs. See Figure 4-5.
4. The two sides of the guide comb teeth need to be aligned and flat on the two sides of the cutter teeth. See Figure 6-7.



Picture 1

Picture 2

Picture 3

Picture 4



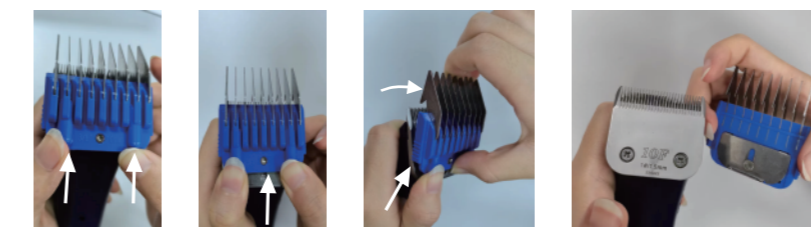
Picture 5

Picture 6

Picture 7

#### REMOVE GUIDE COMB

1. Press the bottom of the guide comb with two thumbs and push up. See Figure 8-9.
2. Press with your left hand, and hold back the metal part of the guide comb in your right hand, as shown in Figure 10-11.



Picture 8

Picture 9

Picture 10

Picture 11

### WARRANTY

The Professional Grooming Clipper is warranted for 12 months from the date of purchase. The warranty is not covered if

1. The clipper breaks down caused by improper use.
2. The clipper has been modified and has been repaired by a non-qualified engineer.
3. Damage from being dropped.
4. If the unit has been over charged.
5. Used with an abnormal power supply.
6. Breakdown cause by not following the precautions in this manual.
7. The warranty for the battery is only 6 months.
8. The clipper blade is not covered under the warranty. It is a consumable and chargeable.

### ENVIRONMENTAL DISPOSAL

It is the owner's responsibility to dispose of these clippers in a reasonable manner after their useful life. Do not dispose of in household waste.

Contact us for any help or advice on details below.



www.mypetcommand.com  
Email :- Sales@mypetcommand.com  
Tel USA:- 888 686 6495  
Tel Australia:- 1300 416 703  
Tel UK:- 020 3936 1156