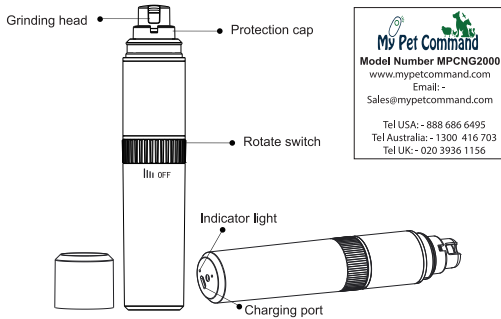


User's Manual-Pet Nail Grinder



Product Specification

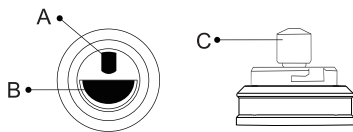
Product name: Speed-control pet nail grinder	Model: MPCNG2000
Charging coil: Micro USB	Charging voltage/current: 5V 1000mA
Battery capacity: 2000mAh	Battery type: Internal Rechargeable Lithium Battery
Battery charging time: About 3.5 hours	Running time: about 20 hours
Rotating speed: 6300-8200RPM	Product size: Φ33*160mm
Main material: ABS	

Charging Method

1. Ensure the product rotate button turn into the OFF site;
2. After connecting the Micro USB to the product USB slot, apply Micro cable to the USB charger or other 5V USB charger(5V 1000mA);
3. The indicator light is red when charging and light turns to blue once it is fully charged; Use the product after turning off the charging line.

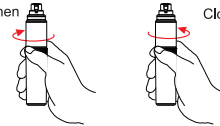
Usage of the Electric Nail Grinder

1. Choose the suitable port for love pets after opening the protection cap:
A is a port that used for the small pets' nail
B is a port that used for the medium or large pets' nail
C is a port that used for rapid nail grinding



2. Open or adjust the suitable motor rotation: Rotate the switch to the left to turn on the nail motor, motor start working when hear "click" sound; continue rotating switch to the left, the motor speed strengthen gradually; Rotate the switch to the right to turn on the nail motor, motor speed gradually weaken and even stop when hear "click" sound.

Open or strengthen Close or weaken



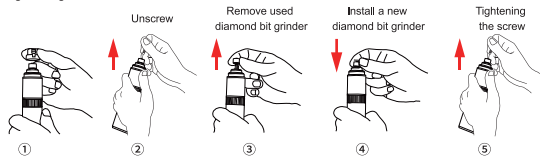
3. Pinch the pet's claw with your thumb and forefinger, gently place the pet's nail into the hole of the grinder, and start trimming pet' nails. It should not be more than 5 seconds for one lasting time.

Tips

1. If it's the first time to use grinder for your pet, that would best to only grind off the nail tip or the part that is too long to long. Don't grind it too deep, so that your pets could get used to the grinder!
2. When its effect of grinding is decreased after long using, please clean the blockage on surface of the grinder head. If it still doesn't work, please replace a new diamond bit grinder.

Method of replacing diamond bit grinder:

Spin and take down the protective cover toward anticlockwise direction; Use a phillips screwdriver to unscrew and remove the top of grinding head; Install the new one by tightening the screw.



*It's normal that the product will warm up during the usage or charging.

Grinding tips

1. If your pets are afraid of the grinder at the first time, you can show the grinder to them and let them smell it, which will reduce some fear of them.
2. In the beginning, you could adjust the motor speed into lowest speed, then adjust strong when your pets are suitable for grinder.
3. You can place your pet in a wide table, then they will be well behaved since they are afraid of high. You can also reward the pets with snacks simultaneously.

Notes

1. Please charge fully before using at the first time;
2. Please do not disassemble the product arbitrarily;
3. Please do not wash the product with water or store in humid environment;
4. Please do not wipe or touch the switch with wet cloth or wet hand;
5. The product should only be cleaned with slightly wet cloth or neutral soap.

