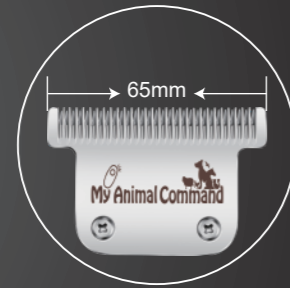


MY ANIMAL COMMAND

Professional Brushless Motor Electric Livestock Shear Clippers Manual



**MODEL
MAC600**



My Animal Command

www.myanimalcommand.com
Email: -sales@myanimalcommand.com
Tel USA: - 888 686 6495
Tel Australia: - 1300 416 703
Tel UK: - 020 3936 1156



PROFESSIONAL ELECTRIC LIVESTOCK SHEAR CLIPPERS

Congratulations on Purchasing the My Animal Command MAC600 Professional Brushless Motor Electric Livestock Shear Clippers.

SAFETY INSTRUCTIONS

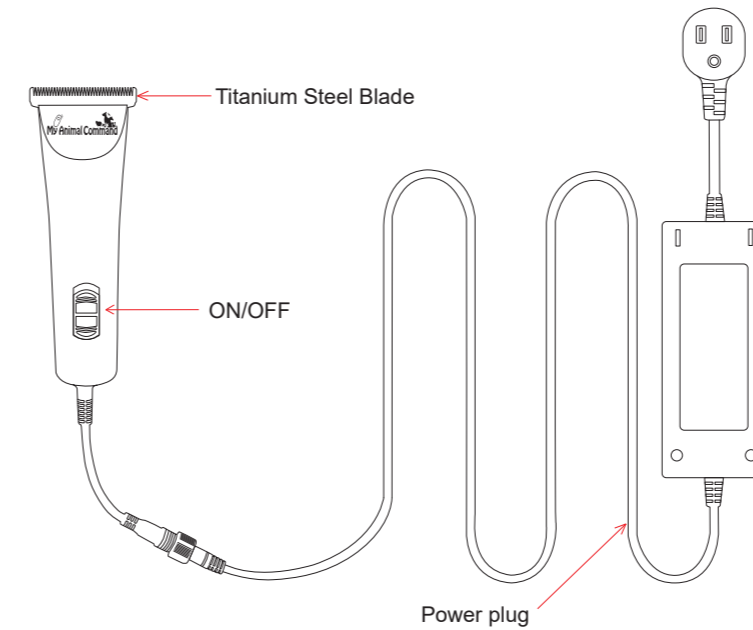
Before use, please read the following Safety Instructions in preparation before using these clippers:

1. Check the circuit and make sure the power cord is not damaged or broken, and ensure that the voltage used is consistent with the one declared on the machine.
2. Before start-up, make sure that the switch of the machine is set to the OFF position.
3. animal shearing should be carried out in a dry environment, and make sure that the machine is operating with the power supply away from damp and wet places in order to avoid short circuit or open circuits which put the machine in danger and can damage the machine. Animal shearing in the open air on a raining day is forbidden. Moreover, it is noted not to allow oil or water into the actual machine.
4. Animal shearing work must be completed at the designated site. Keep bystanders and kids away from the working site to prevent the occurrence of any accident.
5. Animal shearing should be done only by experienced workers or under professional instruction, as it may cause injury to Animals.
6. Don't touch the head of the machine with any part of your body when it is running, as it may cause injury to you, and keep the head away from hard objects to avoid damage.
7. Shut down the machine when the work is stopped, unplug the cable from the power and pack them in the plastic box. It's not recommended to leave the machine and its accessories lying about.
8. This machine is only intended to be used for Animal shearing or other similar livestock/Pet type animals. Hair-cutting on humans or fur-cutting on animals other than Livestock Animals or Pets is not allowed.
9. If the machine stops or does not work, turn off the switch first on the machine and then pull out of the power cord.
10. When inspection or maintenance is needed, turn off the machine switch and pull out the power cord before such work has commenced.
11. Keep away from Children.

PRODUCT PARAMETERS

Product Name:	Professional Brushless Motor Electric Livestock Shear Clippers
Model Number:	MAC600
Power:	126W
Input:	AC100-240V,50/60Hz
Output:	36V,3.5A
Sound Level:	65-70db
Advantage:	Light weight,super powerful,65MM wide blades. Blades not easy to get hot

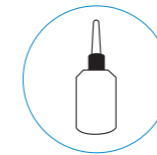
STRUCTURE



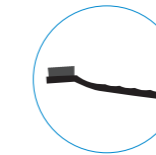
ACCESSORIES



Blade



oil



Cleaning Brush

INTRODUCTION

These are a powerful yet light and easy to handle clippers made to be used for all kinds of Livestock Animals Shear and clipping applications which includes, Sheep, Horses, Goats, Pigs, Cattle, Alpacas, Llamas and can also be used with big and XL Dogs and Pets.



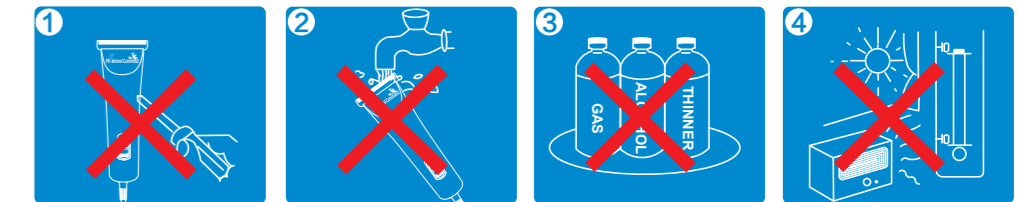
This Clipper Has been designed to have a comfortable and easy clipping experience with a unique ergonomic light weight design and shape. Combined with a powerful 126W 36VDC Brushless Motor deliver powerful Torque to the blade which will allow to its cut through the some of the thicker coats without the blades getting stuck.

Our Unique Patented Blade technology provides you with a wide 65MM length Blade which leaves a 1.5mm Hair Length on your Animals. Blades are 33 Fine Tooth Made of Ceramic and Titanium materials and coated with titanium coating providing you with superb cutting without Blades getting Hot and operating at 7500 SPM.

Please Make sure your clean and oil the Blade regularly for Optimum performance and longevity. Use Standard Clipper oil as provided in the Kit and additional Oil and Blade kit can be purchased from My Animal command.

Please Note there is Only 1 Type of Blade type that can fit onto this Machine. With Purchase of your Kit, we have provided an additional spare blade for you. You Can also purchase additional spare Blades from us so check our website or Search My Animal Command MAC600 extra Blades.

CAUTIONS



1. Please don't disassemble the product by yourself.
2. Please do not clean the product with water and don't keep it in wet place.
3. The product can only be cleaned with cloth dipping with water or neutral soap solution.
4. Do not charge the product in the heat source above 40°C and the environment below 0°C.

* The product will slightly get hot during use or charging, which is not abnormal.



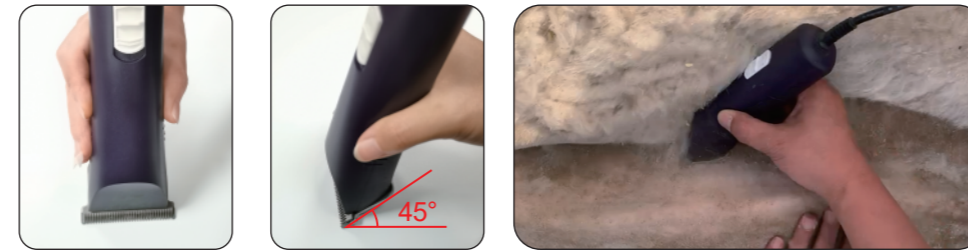
MODEL: MAC600



ATTENTION

Do not dip in water directly when the electric shear is working. Remove the blade when it needs cleaning.

HOW TO HOLD AND CLIP WITH THE MAC 600 CLIPPERS



Step 1. Please hold the clipper like you would be holding a pen and the clipper should be kept around 45 degrees to horizontal as shown below. Always Oil the Blade regularly.



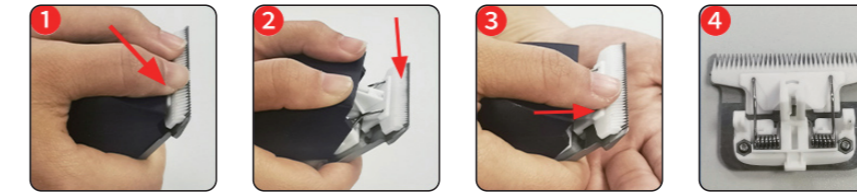
Step 2. For Sheep Shearing it might be useful to dip the blade into soap water and oil every 2 minutes due to the greasiness of some wool and not for the wool to get caught up in the blade. For Sheep Shearing we suggest to use half of the length of blade for shearing as shown below and not the entire length of blade.



Step 3. A Good technique is to start to shave from the leg of sheep or a goat, or from the head area. Firstly, we shave out in a straight line, then you can continue to shave the sheep or Goat body along and above and below the original shave line which may help allot.

Please note Step 3 is specifically for sheep, goats, alpacas and for other livestock animals like horses, Cows, pigs etc.... For Large size dogs, you don't have to shave it like the method as shown above.

BLADES DETACHMENT



1. Push forward the blade teeth with your thumbs, as shown in step 1-3.
2. One hand hold and catch the blade to avoid falling and damage, as shown in step 3-4.

BLADES INSTALLATION



1. Align the convex part of the Blade fits with the clipper base Groove position, as shown in step 1.
2. Line up the two sides of blade plastic clips to the 2 Metal Brackets on the clipper base, as shown in step 2-3.
3. Push the blade firmly, as shown in step 4. Done.

BLADES MAINTAIN & CLEANING



1. Wool hair may accumulate in the blades teeth and the moving blade shell. Please clean the wool hair with the cleaning brush provided, as shown in pic. 1-2
2. After cleaning the blade, always apply 1-2 drops of oil as shown in pic. 3.
3. Blades should be oiled before, during and after each use.

Attention: Please do not disassemble the blades structure and spring, it may cause trouble.

WARRANTY CARD

Product Name	Professional Brushless Motor Electric Livestock Shear Clippers	
Model Number	MAC600	Warranty period
Date of production		One year from the date of purchase
Date of purchase		

CUSTOMERS			
Address		full name	
		Telephone	
DISTRIBUTOR			
name		name	
Address		Telephone	

We offer 1 Year warranty on the clipper machine. Normal wear and tear for Blades are not covered under warranty. Contact My Animal command for any warranty claims.



www.myanimalcommand.com
 Email: -sales@myanimalcommand.com
 Tel USA: - 888 686 6495
 Tel Australia: - 1300 416 703
 Tel UK: - 020 3936 1156