



Email :sales@myanimalcommand.com

Tel USA:- 888 686 6495

Tel Australia:- 1300 416 703

Tel UK:- 020 3936 1156

MAC400 (400W) Power Horse Clipper

Operating Instructions



Please Go through and Read entire manual before use

Congratulations on your Purchase of our High Quality My animal Command 400W, 6 Speed Clippers. These clippers are made to be powerful and yet easy to use in Horse or other similar Livestock clipping operations

Please make sure you read this Manual carefully and fully before use (and instructions should be kept with the clipper at all times) and these clippers are not to be handled by Children and make sure they are handled by the appropriate and experienced people at all times

These clippers are made to be used on Horses, Cattle, Pigs and other similar livestock type animals and are not intended to be used on people

Please note the Clippers kit is supplied with 2 x sets of the High Quality Beiyuan 24/35 Tooth Blades as shown Below. Please note these Type Of Blades are most suitable for Horses.



Please note you can get other types of Universal Blades which may be more suitable for other types of Animals and different hair types such as Lister Type Blades and others that will fit onto this machine

As our Clipper Machine can accept universal blades, if you require to get any other blades other than the supplied ones , please search for and buy any additional Blades as required for other type of Animals and clipping operations that will fit onto this clipper machine.

Blades and oil are universal and can be Interchanged with Various other Brands of clipping machines such as compatible to Lister blades etc...

TABLE OF CONTENTS

1	Safety Instruction	Page 4-5
1.1	General information	
1.2	Symbols and warning indications	
1.3	Correct use	
1.4	Safety basics	
1.4.1	Energy supply	
1.4.2	Maintenance and inspection instructions	
1.4.3	Sound-pressure level	
1.4.4	Vibration	
1.4.5	Radiation	
1.4.6	Other risks	
1.5	Operator responsibilities	
2	Correct use	Page 6-7
2.1	Tension Adjustment	
2.2	Lubrication	
2.3	Range of application	
2.4	Technical data	
2.5	Equipment	
3	Putting into operation	Page 8-10
3.1	Controls and operating hints	
3.2	Correct adjustment of clipper blades	
3.3	Correct lubrication of the clipping head	
3.4	Switching on/off	
4	Maintenance	Page 10-11
4.1	Cleaning	
4.2	Mounting of the clipper blades	
4.3	Correct adjustment of the clipper blades	
4.4	Grinding of the clipper blades	
4.5	Cleaning of the air filter	
4.6	Storage of the clipping machine	
6	Repairs	Page 12-14
6.1	Introduction	
6.2	List of problems	

1 SAFETY INSTRUCTIONS

1.1 General

These safety instructions contain basic indications and information to be observed during set up, operation and maintenance.

All persons operating or working with the clipping machine must read these operating instructions very carefully.

The operating instructions should always be available at kept at the place where the appliance is operated.

1.2 Symbols and warning indications

Different kinds of symbols are used in this operating instruction. They either refer to possible dangerous situations or point out technical information, which in case of non-observance may lead to bodily injury and material damage.

Danger Symbols



Warning

Indicates a possibly dangerous situation. If not avoided, it may lead to serious bodily injury or even death.



Caution

Indicates a possibly dangerous situation. If not avoided, it may lead to minor or slight injuries.

Information Symbols



Tip

Hint, which in case of non-observance may lead to operational failure or damage.



Picture Hint

This symbol with picture number refers to the corresponding picture at the end of this operating instruction.

1.3 Correct use

The appropriated use of the clipping machine is described in chapter 2.1.

Indications in chapter 2.2 (technical data) are compulsory operating limits and characteristics.

1.4 Safety basics

1.4.1 Energy Power supply

Put the plug only into sockets that have been installed in accordance with the regulations. Defective electric installations may lead to an electric shock or a short-circuit. Sockets should be equipped with a residual current circuit-breaker. Observe the regulations in force in your country.

Only carry out maintenance and cleaning activities when the plug is disconnected. Never leave the appliance unattended while the plug is still in the socket. Animals may only be clipped when children are kept at a distance. Always store the clipping machine at a dry and safe place, not accessible to children.

1.4.2 Maintenance and inspection obligations

Never use a damaged appliance to clip animals. If a fault is detected in the housing or the electrical cord, always have it repaired exclusively by an authorized expert.

1.4.3 Sound-pressure level

Sound-pressure level during operation is 75 dB(A).

1.4.4 Vibration

The clipping machine does not exceed a vibration value of 2.5 m/s^2 .

1.4.5 Radiation

On the basis of tests according to the harmonized European standards of the EC-directive, the clipping machine meets the basic safety requirements concerning the electromagnetic compatibility.

1.4.6 Other risks

Should there occur other risks or damages during operation that are not directly connected with animal clipping, please inform us. This also goes for technical shortcomings that may lead to dangerous situations.

1.5 Operator responsibilities

For safe use of the clipping machine The Operator Needs to Follow and Operate the Machine with the following observations :-

The operator has read and understood this operating instruction, or has been instructed by an expert on the use and operation of the clipping machine and the dangers.

- The operator is experienced in handling the animals to be clipped. Children should never operate the clipper.

2.1 Tension adjustment

Please note you need to adjust the tension knob according to the type of animal and fur/hair the animal has got. Firstly always first start with the tension knob not in a tight position and the tension knob needs to be rotated in anti-clockwise position before starting the clipping process. (Refer to fig 2 below) As you start clipping your animals hair, you may need to adjust and tighten the tension knob for the type of hair the animal has got. Please start turning the knob ¼ turn each time in clockwise position until you find your ideal tension that you require for your clipping operation Care must also be taken not to over tighten the tension screw, as this clipper needs less pressure on the blades than other traditional styled clippers. Slightly adjust the blade tension from time to time during clipping. If adjusting the tension does not produce a good clip, your blades may need re- Sharpening or replacing

2.2 Lubrication

A thin layer of oil on the front and back blades is essential for good clipping. This will increase the life of the clipper and the blades.

All other moving parts in the clipper head must also be kept well oiled. Place a few drops of oil on the clipper blades and pour some into the lubricating holes on the clipper head. See Diagram below

Only use our special oil or a paraffin oil meeting the ISO VG 15 specification. This oil is nontoxic and produces no irritation on contact with the skin or the mucous membranes. We supply 1 Bottle of oil with your clipping and is standard type clipper oil

Poor lubrication is the most frequent cause of unsatisfactory clipping. Inadequately oiled clipper blades will overheat and lead to reduced blade life. The clipper blades and clipper head must be oiled at least every 5 minutes, so that they do not run dry. Also you may want to use Cooling Lubricants as required.

CORRECT USE

2.3 Range of application

This clipping machine is only meant for shearing Horses or other similar livestock animals using similar type hair. Other applications, in particular use with human beings, are strictly forbidden.

2.4 Technical data

Connecting voltage:

Motor power:

Frequency:

Clipping velocity:

Dimensions (:W/H/L):

Weight without electric cord:

} see rating plate on
machine

approx.65mm×60mm×305mm

1.550 kgs (3.4LB)

Operate clippers at ambient temperature operating environment of: 0°C—40°C
(32F-104F)

Operate clippers at air humidity environment of : 10% - 90% (relative humidity)

Sound-pressure level: ca. 75 dB (A)

Vibration: < 2.5 m/s²

2.5 Equipment

1 clipping machine with clipping head

1 set of clipper blades (mounted on Machine) 35/24

1 Extra Set of Clipper Blades 34/24

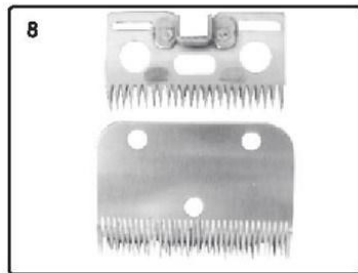
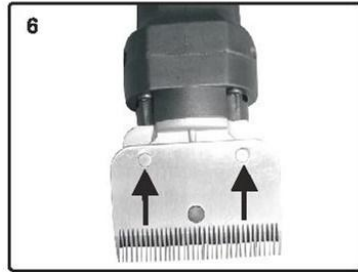
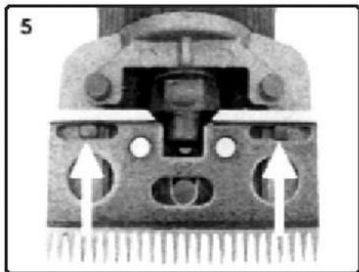
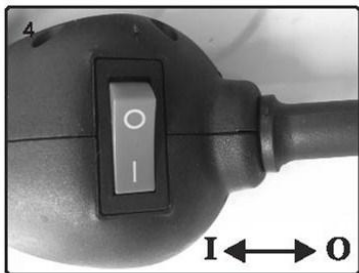
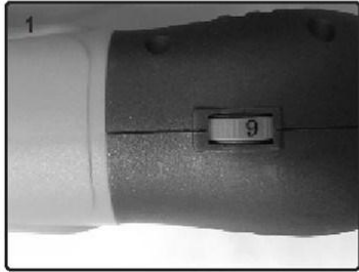
1 Set Of Spare Carbon Brushes

1 bottle of special-oil (100ml)

1 Cleaning Brush

1 operating instruction Manual

3 OPERATION (Refer to Diagram Below)



3.1 Controls and operating hints



Incorrect use of the clipper may be hazardous. Please observe the following measures for accident protection before putting the appliance into operation.

- The voltage indicated on the rating plate of the machine has to correspond to your mains voltage. The appliance may only be connected to alternative current voltage (AC).
- Avoid any contact with moving clipper blades.
- Before carrying out works on clipper blades and / or clipping head, always disconnect the mains supply first. As long as the appliance is still connected to the mains supply, never touch the clipper blades, even while the appliance is switched off.
- Avoid any contact with appliances that are in contact with liquids. Never clip wet animals. Liquids penetrating into the appliance reduces electric insulation. Risks of electrical shock and short-circuits can arise. Clean the appliance only with a dry cloth or a brush.
- An extension cord lying on the floor may become entangled and turn into a danger. Before shearing, place the cord in a safe and secure way. Avoid the connecting wires of the appliance to become bent or tangled. Avoid animals standing on or getting caught up into the cord. Keep the cord away from hot soils. Never wrap the cord around the appliance. This may lead to insulation damages or breaking in the cord. Regularly check the cord for any defective spots
- Before disconnecting the plug, put the switch in the OFF-position (position 0 as per picture 1).
- Never use defective clipper blades with broken teeth. Only use sharp clipper blades. Only use original clipper blades.
- Never put an object into an opening of the appliance. The noise of the appliance may confuse or irritate the animals. A kick or the body weight of an animal may lead to serious injuries. Fasten the animal in a safe way. Switch on the appliance in the field of vision of the animal and approach to the animal's head calmly.
- Use a safe and clear area to clip animals.
- Only clip in well ventilated area and never in close vicinity to flammable materials.



These safety instructions have to be observed under all circumstances. It is advisable to use a fail current safety socket when working with electric appliances.

3.2 Correct adjustment of clipper blades

Every clipper leaving the factory is set up for clipping!

adjustment of clipper blades - Maintenance 4.3 - the correct adjustment of clipper blades

During clipping



The pressure applied by the new clipping system is considerably lower compared to previously delivered horse clippers, Attention should be paid that clipper blades are not fastened too tightly. During clipping activities, the tension of the clipper blades may have to be adjusted from time to time by max. 1/4 rotation.



3.3 Correct lubrication of the clipping head

Lack of lubrication is the most common cause of unsatisfactory clipping results and overheating of the clipping machine. For best clipping results as well as for enhancing life time of the clipping blades and the appliance, apply a thin oil film on the blades. Other moving parts of the clipping head should also be well lubricated.



3

Drop oil on the clipping blades and in the oil opening of the clipping head approx. every 10 minutes (picture 3).

only use our special oil for animal clippers. Do Not use diesel oil!

Clipping blades and clipping head should be sufficiently lubricated approx. every 10 minutes while clipping so that they won't run dry.



1

3.4 Switching on/off

The siding switch has two positions (picture 1).

Position I: Appliance is switched on

Position 0: Appliance is switched off



Before connecting the plug, verify the position of the switch. The switch should be in the position 0. Only use the sliding switch to switch the appliance on or off.

4 MAINTENANCE



Before carrying out any maintenance activities, the energy supply has to be switched off and the plug has to be pulled from the socket. When working on the clipping blades or clipping head, **always disconnect the power supply**. Never touch the clipping blades as long as the sheep shear is connected to the power supply, even when the appliance has been switched off.

4.1 Cleaning

After use, remove any oil from the appliance, from the clipping head and from the clipping blades by means of a dry cloth as well as all wool rests may be removed by means of a dry brush. Next, slightly oil all parts in order to prevent rust formation. Notice that even the slightest rust may considerably effect clipping results or even make it impossible.

4.2 Mounting of the clipping blades



8+9

The set of blades always consists of a bottom blade and an upper blade. For clipping, both ground (sharpened) surfaces (picture 8) must rest on each other.

The blades are mounted as follows (pictures 5-9):

Place the machine sideways on a hard surface, loosen the pressure regulation nut (picture 9) and remove the spring below. Now turn the machine around so that the lower blade lies uppermost and remove the used blades.

Make sure that the new blades are clean. Pay special attention to the fact that the cutting surfaces must be free from dirt and hair.



Place the upper blade by its slotted holes on the oval pins (picture 5) of the cutter head. Then place the lower blade on the bolts (picture 6) of the cutter head. Slide the round-head bolt into the square hole of the lower blade. Turn the clipping machine around sideways again, put the spring on the round-head bolt and tighten the pressure regulation nut (picture 7). Tighten the pressure regulation nut (picture 2) until you can feel a slight resistance.

4.3 Correct adjustment of the clipper blades

Adjust the clipper blades as follows:

Before clipping:



The appliance is switched off (picture 1).

Fasten the pressure regulation nut until the first perceptible resistance. Switch on the clipping machine. Loosen the pressure regulation nut until the clipper blades are not under pressure and run freely (motor speed is increasing) Now slowly fasten the pressure regulation nut (picture 2) until you hear the motor speed reduce and a resistance is felt while fastening the pressure regulation nut Now tighten the pressure regulation nut by 1/2 of a rotation at the most Start clipping.

In case the cut is not satisfactory, slightly adjust the tension of the blades. If clipping has been started while the pressure regulation nut has not been sufficiently tightened, hair may heap up between the clipper blades. This may spoil clipping results or even make clipping impassible. In this case, clipper blades should be removed, cleaned and reset.

4.4 Grinding the shearing blades

A correct grinding (re-sharpening) of the clipper blades can only be done by means of a special machine and by an expert. Only work with sharp blades. Defective blades with broken teeth or blunt edges must be replaced.

4.5 Cleaning of the air filter



The air filters are situated at the top and at the bottom of the motor part of the shearing machine (picture 10). The air filters must be removed to clean them.

It is necessary to regularly clean the air filters. Make sure that nothing enters the machine when cleaning the air filters, The clipping machine must never be operated without air filter.

4.6 Storage of the clipping machine

In between use or in between clipping seasons, the Clipping machine - which has been thoroughly cleaned and oiled - must be stored in the accompanying case in a dry place not accessible for children. If you suspect that fluids have entered the machine, do not use it! It may lead to electric shock or short-circuit. Send the machine for inspection to your suppliers or an authorized agent.

6 REPAIRS

6.1 Introduction

The measures to remedy failures are mentioned in the column REMEDY/ACTION of the list of failures. Instructions marked With * are only to be carried out by authorized qualified personnel.

6.2 List of problems

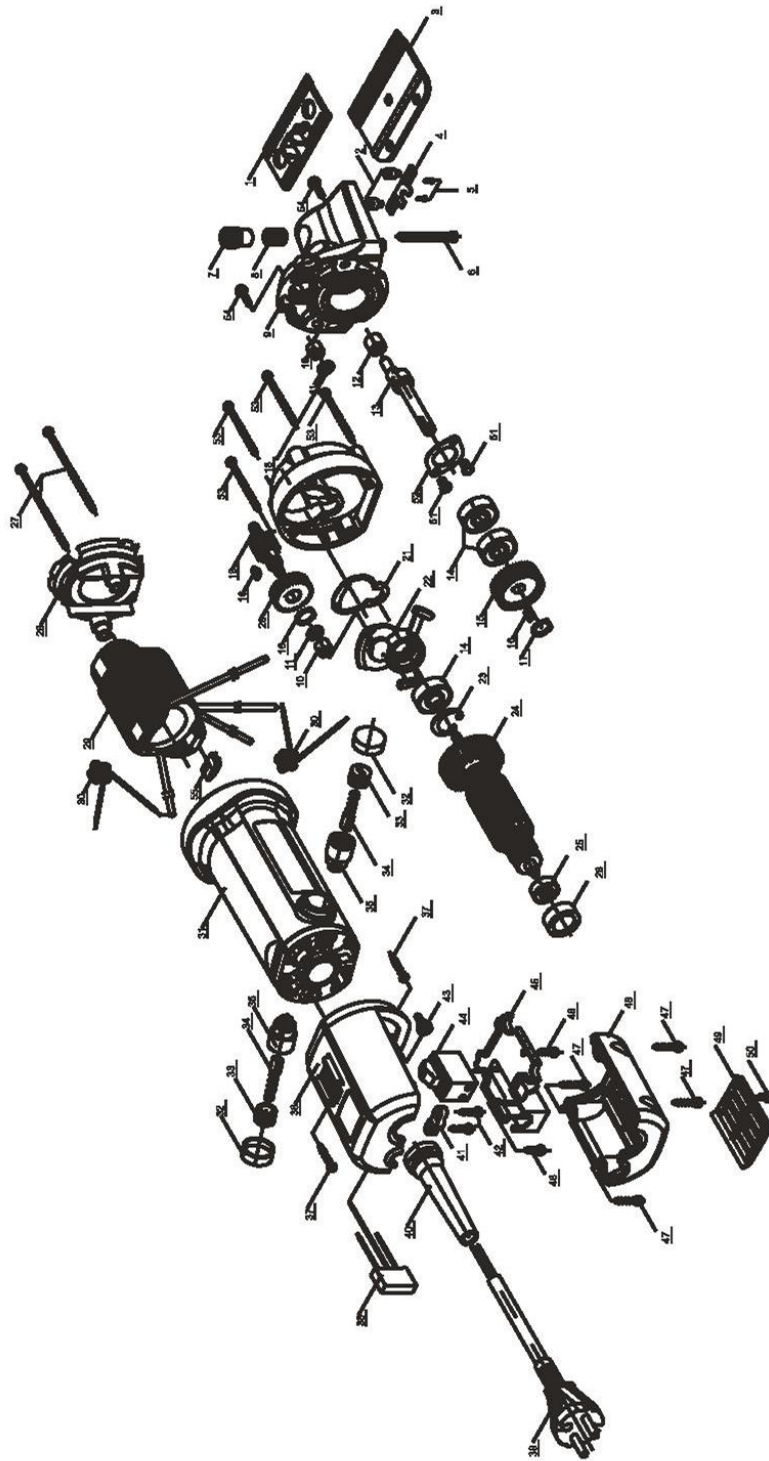
In case of failures that are not listed below, please contact an authorized service point (your authorized agent).

Motor parts

Failure	Cause	Remedy / Action
Motor does not run	<ul style="list-style-type: none"> - no power - cord defective - switch or motor defective - motor safety switch off 	<ul style="list-style-type: none"> check socket and fuse * have it tested or replaced by specialist shop * have it replaced by specialist shop switch on motor safety switch
Motor safety switch switches repeatedly	<ul style="list-style-type: none"> - Rotor or Stator defective - blades blocked - Motor safety switch defective - air filter blocked 	<ul style="list-style-type: none"> * ... replaced by specialist shop remove blockage * ... replaced by specialist shop clean air filter
Motor becomes warm / hot	<ul style="list-style-type: none"> - air filter blocked - blade tension too high - ball bearing defective 	<ul style="list-style-type: none"> clean or replaced air filter loosen adjusting screw, if after that blades no longer cut, they have to be replaced by new one. * ... replaced by specialist shop
Motor runs very slowly	<ul style="list-style-type: none"> - Rotor or Stator defective - carbon brush worn out 	<ul style="list-style-type: none"> * ... replaced by specialist shop * ... replaced by specialist shop
Motor vibrates	<ul style="list-style-type: none"> - Rotor runs unbalanced - bearings defective - ventilation wheel broken 	<ul style="list-style-type: none"> * ... replaced by specialist shop * ... replaced by specialist shop * ... replaced by specialist shop

Clipping head

Failure	Cause	Remedy / Action
Upper blades does not move	<ul style="list-style-type: none"> - cast full eccentric-tempered broken - gear 29/11 teeth defective - gearwheel (32 teeth) defective 	<ul style="list-style-type: none"> *... replaced by specialist shop *... replaced by specialist shop *... replaced by specialist shop
Upper blade does not move over the whole cutting width	<ul style="list-style-type: none"> - cast full eccentric-tempered used 	<ul style="list-style-type: none"> *... replaced by specialist shop
unsatisfactory clipping results	<ul style="list-style-type: none"> - upper and/or bottom blade blunt - blades not correctly ground - blade tension too low - blades or eccentric dry - not oiled 	<ul style="list-style-type: none"> * have blades sharpened by specialist shop * have blades sharpened by specialist shop raise tension by fastening adjusting screw oil with special oil for animal clippers
Clipper blades do not cut	<ul style="list-style-type: none"> - cast full eccentric-tempered defective - gear 29/11 teeth defective - clipping head used 	<ul style="list-style-type: none"> *... replaced by specialist shop *... replaced by specialist shop *... replaced by specialist shop
Clipper head becomes very hot	<ul style="list-style-type: none"> - blades tension too high 	<ul style="list-style-type: none"> reduce clipping blade tension, if needed, sharpen blades lubricate parts with special oil for animal clippers and recommend to use any standard cooling lubricants used for these type of blades



Contact us for any help you may require at:-



Email :-sales@myanimalcommand.com

Tel USA:- 888 686 6495

Tel Australia:- 1300 416 703

Tel UK:- 020 3936 1156