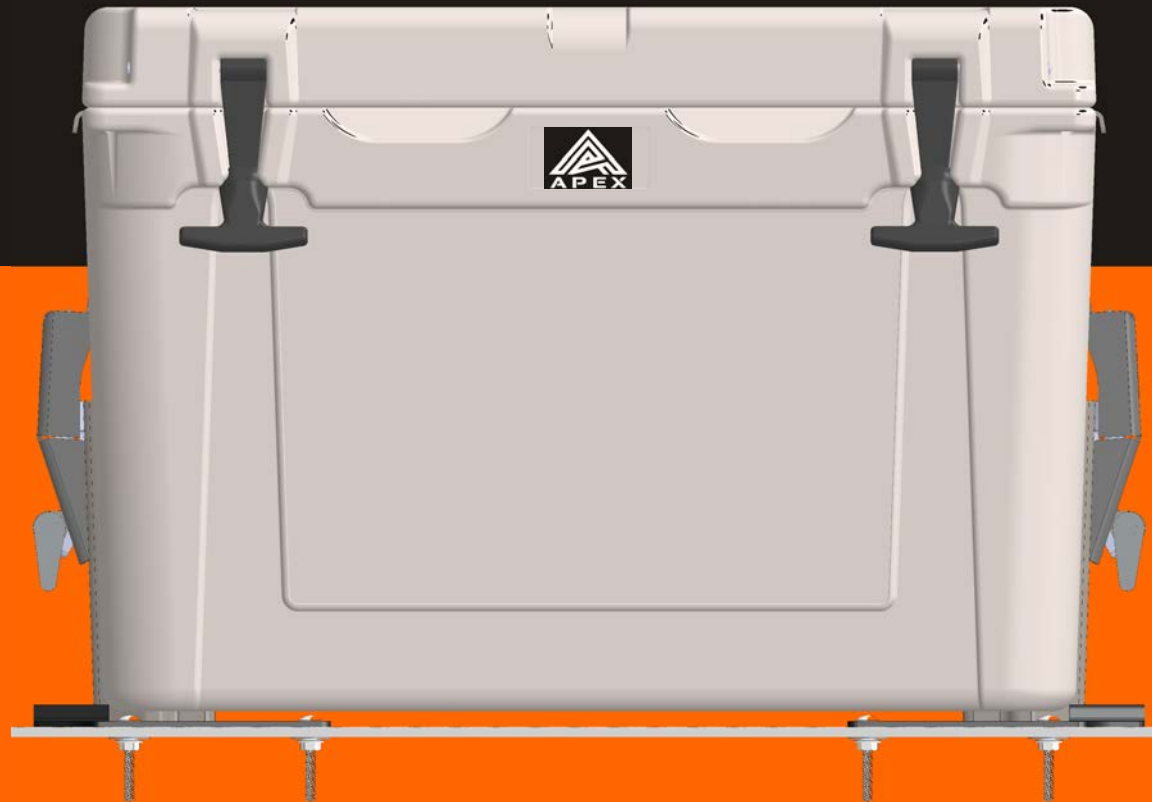




GENERATION 2 BED RACK

INSTALLATION GUIDE



INTRODUCTION

Congratulations on the purchase of your Apex Generation 2 Bed Rack. The purpose of this Installation Guide is to assist you in the installation of the Bed Rack.

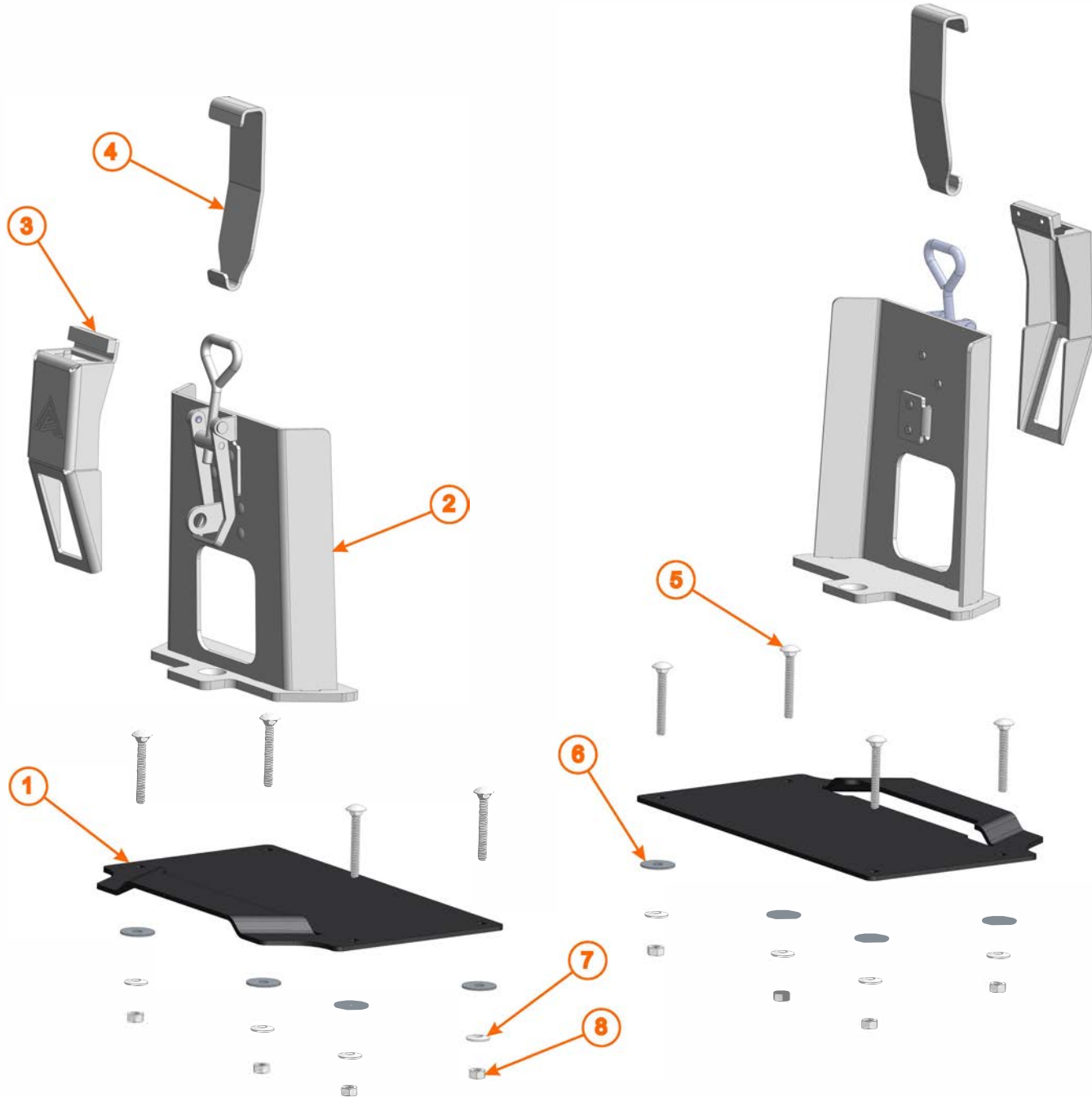
Please carefully read this entire Installation Guide before beginning the install of your Generation 2 Bed Rack. All steps of the installation process are solely your responsibility.

Because of the design and mechanical differences among vehicles, we rely upon your discretion when installing the Generation 2 Bed Rack to your vehicle. Additionally, we recommend professional installation of the Generation 2 Bed Rack.

The manufacturer's warranty is exclusively limited to the repair or replacement of a defective Bed Rack. Damage to your vehicle, its contents or to any person or property is excluded. Damage or failure due to improper installation, use or general wear is not covered by this warranty.

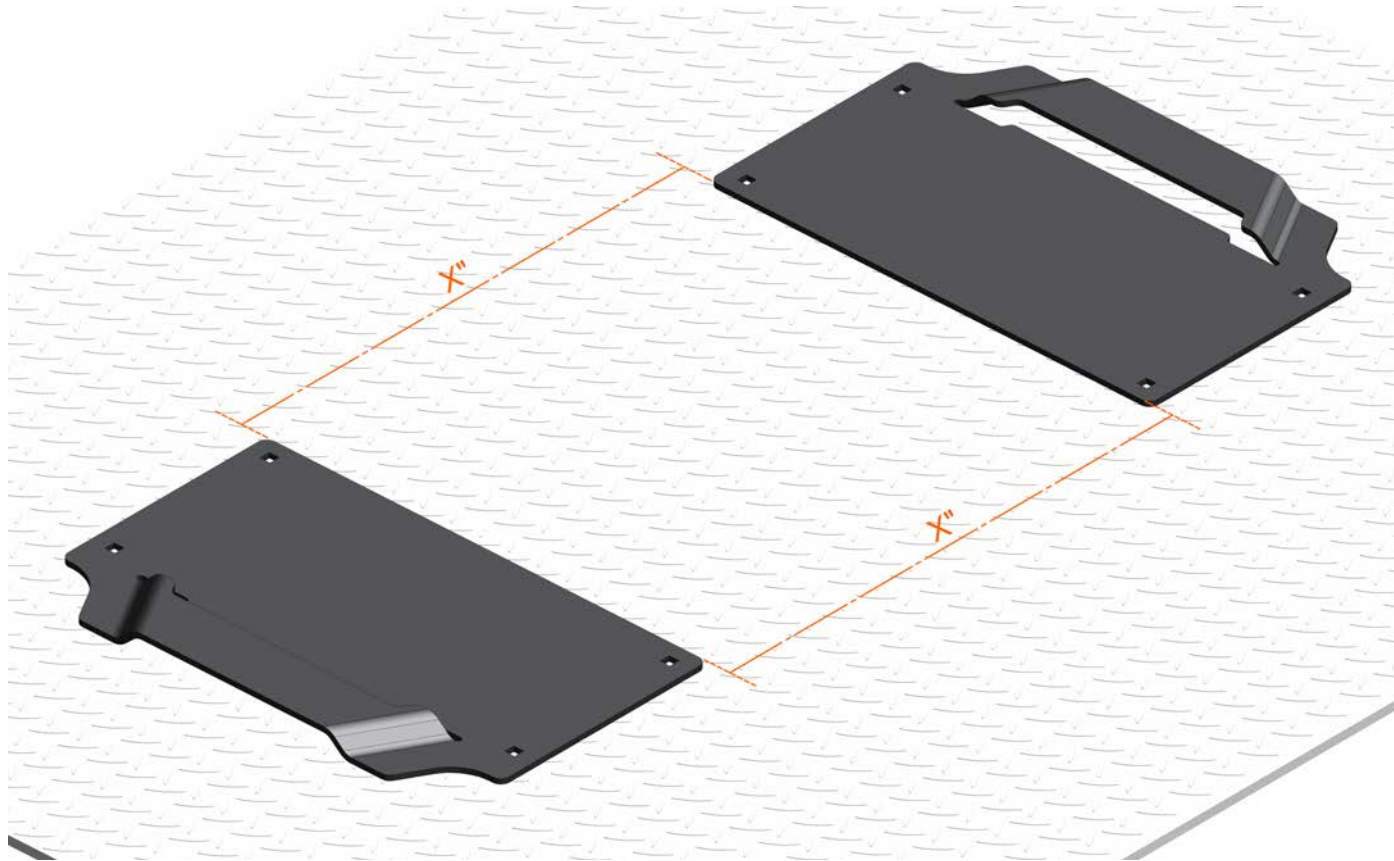
Prior to each use, confirm all components are properly attached, tightened and locked. It is also important to check for any signs of wear, corrosion or fatigue. If any of these issues are present, do not use the product. When traveling, periodically inspect the hardware to confirm it is fastened securely.

PARTS LIST



Item No.	Description	Qty.
1	Base Plate	1
2	Wing	2
3	Latch Cover	1
4	Cooler Strap	2
5	Bolt	8
6	Washer	8
7	Lock Washer	8
8	Hex Nut	8

INSTALLATION OF GENERATION 2 BED RACK



STEP 1

First, select where you want to mount your Bed Rack in your vehicle. Before beginning the installation, look underneath the vehicle to confirm that there is no obstruction or mechanical equipment that will inhibit the installation.

Carefully measure two lines between the inside edges of the two (2) Base Plates as shown in the diagram. The top line and the bottom line should have the exact same measurements. This confirms the Base Plates are squared up correctly and ensures there is accurate space for your Apex cooler.

A75: distance between Base Plates is 22 Inches

A45: distance between Base Plates is 12.8 Inches

Once you have made the measurements discussed above, we suggest making a mark at the back (the formed part of the Base Plate) so that you can replace the Base Plate in the correct position during the installation process.

Note: If you are installing in a truck bed, make sure the holes in the Bottom Plate line up to the top of a ridge or base of a valley on your bed liner. You do not want to drill holes in the bed that require the bolt(s) to be inserted at an angle. The bolts should be installed straight or perfectly perpendicular with

Warning: Look underneath your vehicle and ensure the chosen location is not near the gas tank, fuel lines, electrical wires, transmission lines, cross members or any other integral vehicle parts. Installation may require that you temporarily remove your spare tire.

INSTALLATION OF GENERATION 2 BED RACK



STEP 2

Once you have taken your measurements to ensure that the Base Plates will be squarely positioned at the current measurement apart for your Apex cooler, you will now need to position the Base Plates on the surface, making sure to align the holes of outside edges as shown. Next, slide both Wings into the raised formed part of the Base Plate.

Now, lower your APEX A45 or A75 cooler into place so that the formed channels on the side of your cooler integrate with the Wing such that the upright of the Wing is positioned inside the side channels of the cooler. Once the cooler is positioned on the Wings, make sure everything with the Base Plates lines up correctly and square.

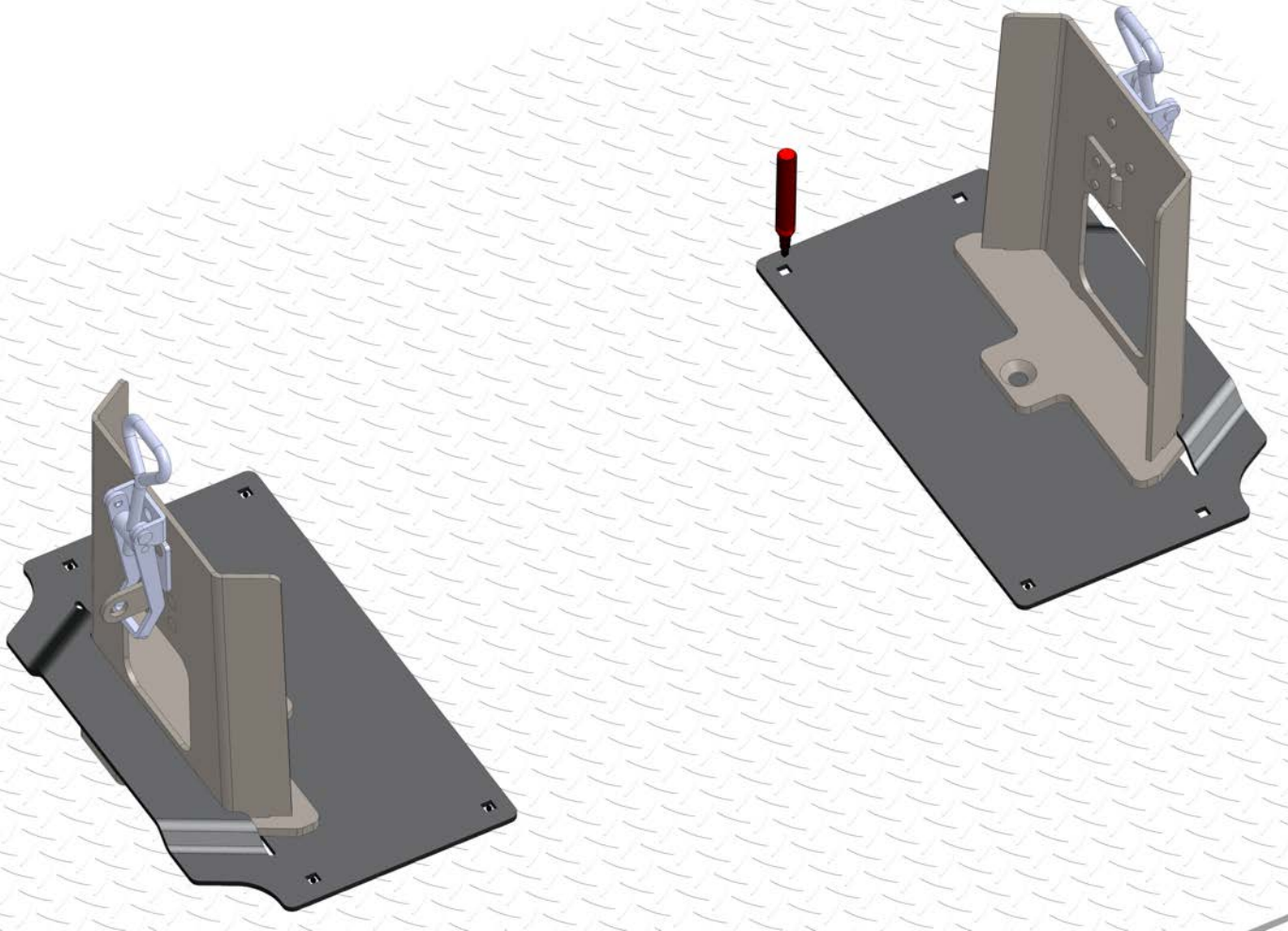
Note: This is only a partial assembly to illustrate how the Bed Rack will be positioned on your equipment once fully installed and to ensure that you have taken correct measurements before drilling holes.

INSTALLATION OF GENERATION 2 BED RACK

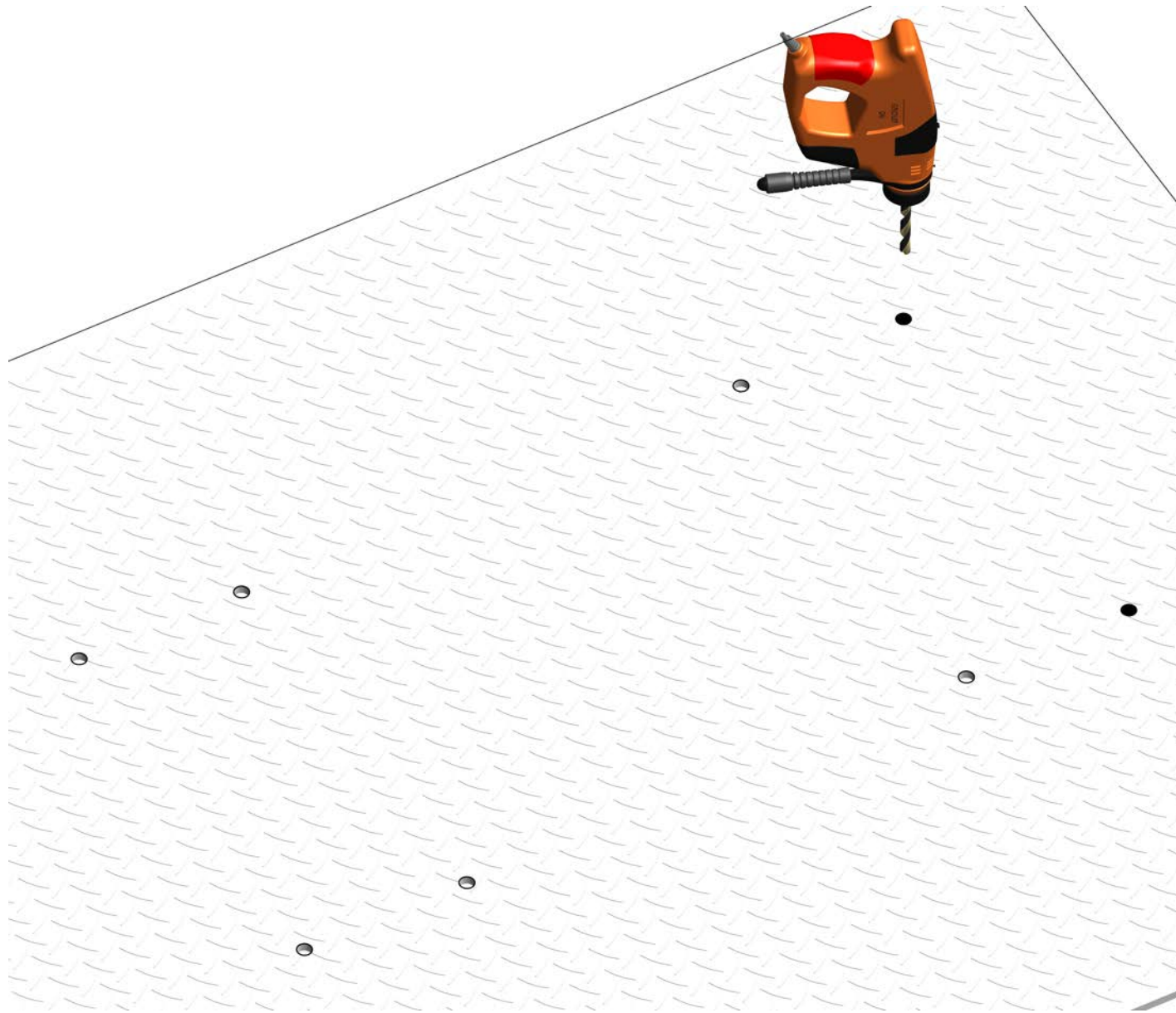
STEP 3

Once you are confident in your measurements and the location for the Bed Rack to be installed, carefully remove your APEX A45 or A75 cooler while leaving the Wings and Base Plates still in place. Then, mark the location of the eight (8) bolt holes as shown in the diagram.

Remove the Wings and Base Plates once you have marked your drill holes.



INSTALLATION OF GENERATION 2 BED RACK



STEP 4

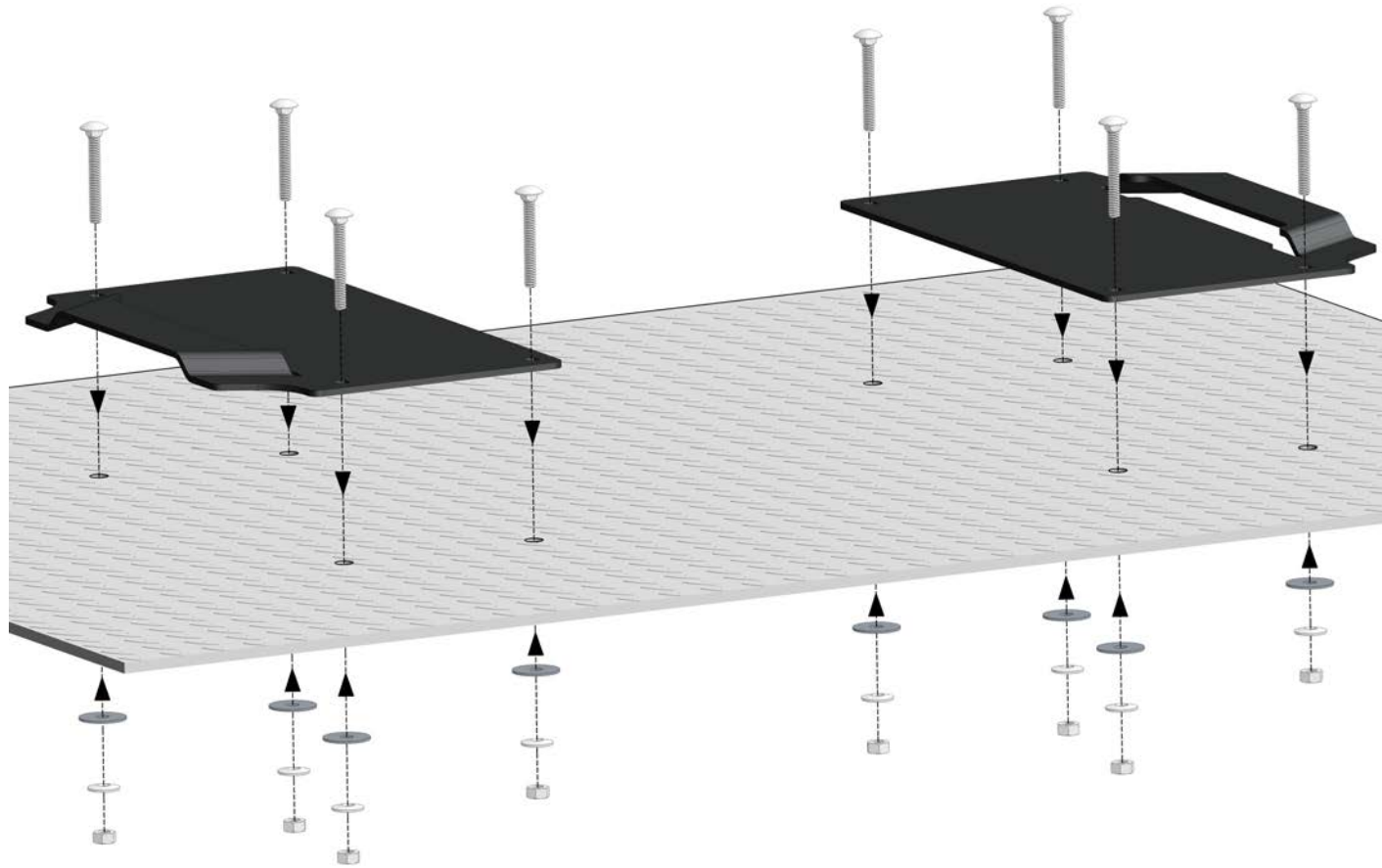
Drill pilot holes (not full-size permanent holes) in the spots you have marked.

We recommend using a small drill bit (around 1/8") for the pilot holes.

Visually inspect the holes from underneath your vehicle or equipment to confirm the pilot holes were not drilled near the gas tank, fuel lines, electrical wires, transmission lines, cross members or any other integral vehicle parts.

Once you are confident in the placement and position of the pilot holes, expand the size of the pilot holes using a 1/4" bit.

INSTALLATION OF GENERATION 2 BED RACK



STEP 5

Place the Base Plates over the drilled holes.

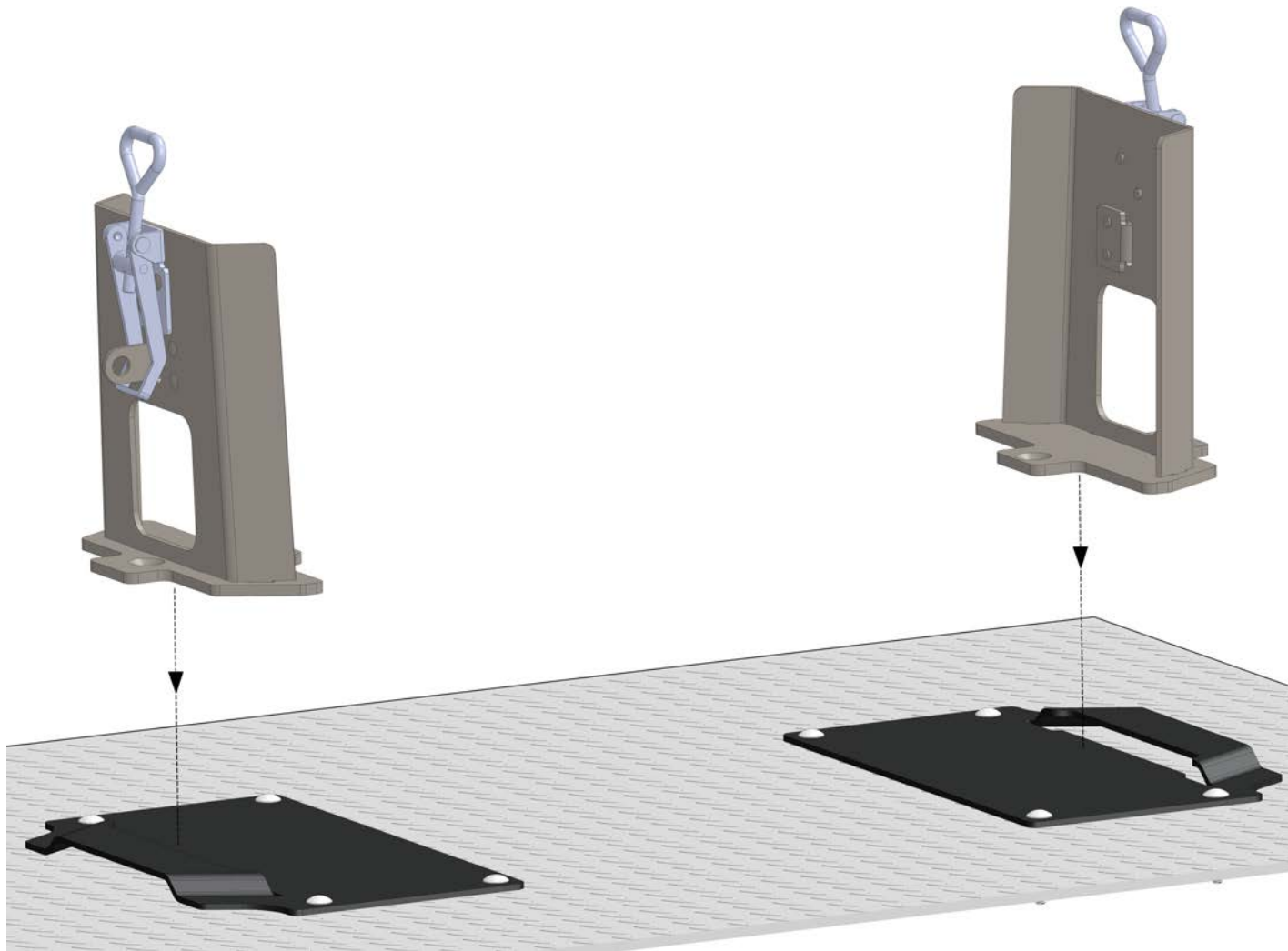
Insert the bolts through the eight (8) holes, then tighten from underneath your vehicle or your equipment using the washers, lock washers and hex nuts provided. We recommend you hand-tighten each bolt before using a wrench to firmly secure each bolt.

Please use only the hardware provided to ensure secure installation. Use of other hardware increases the risk of product movement, damage and likelihood of theft.

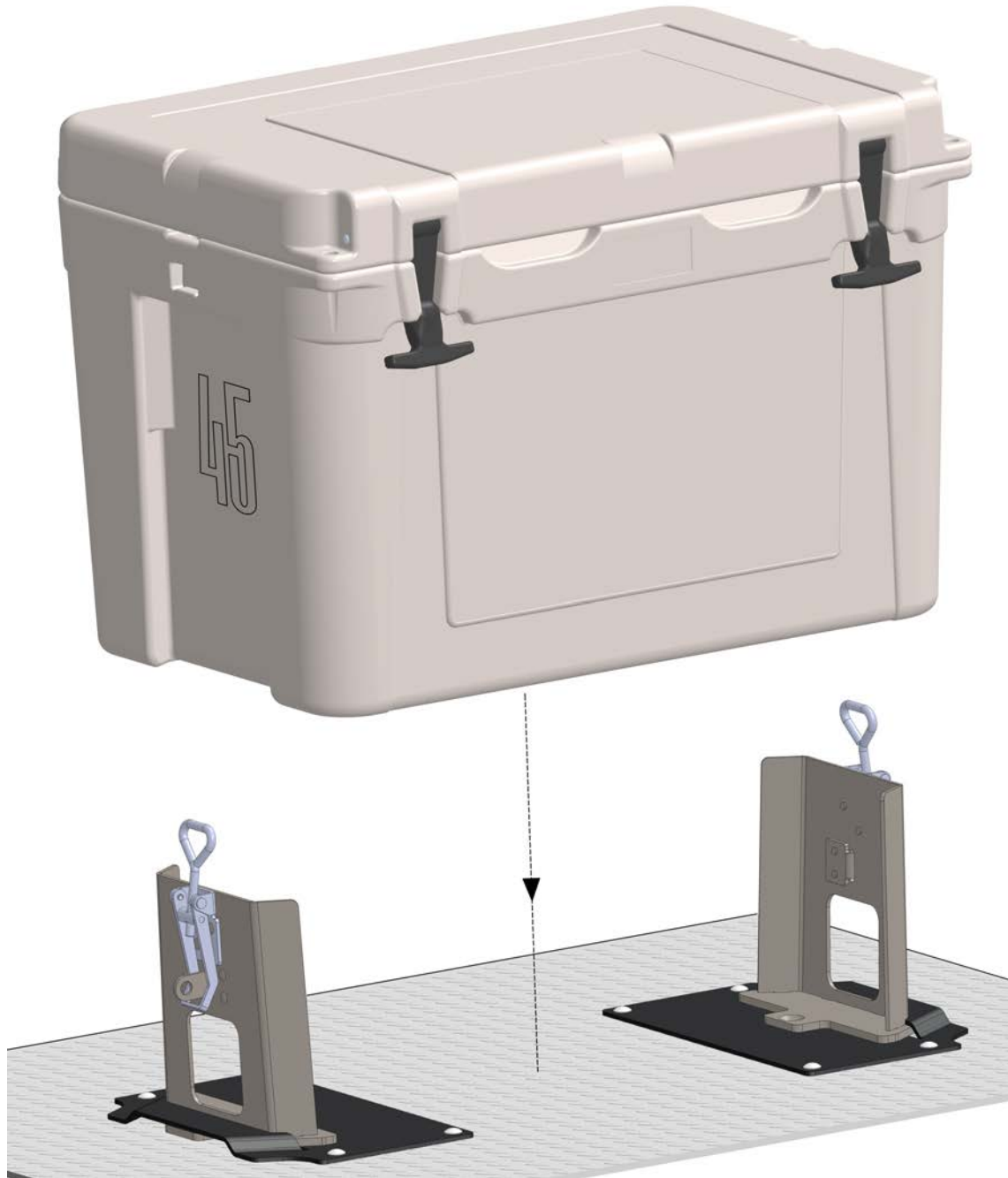
INSTALLATION OF GENERATION 2 BED RACK

STEP 6

Slide the flat outer edges of the Wings into the opening in the raised formed part of the Base Plate on each side. See Diagram



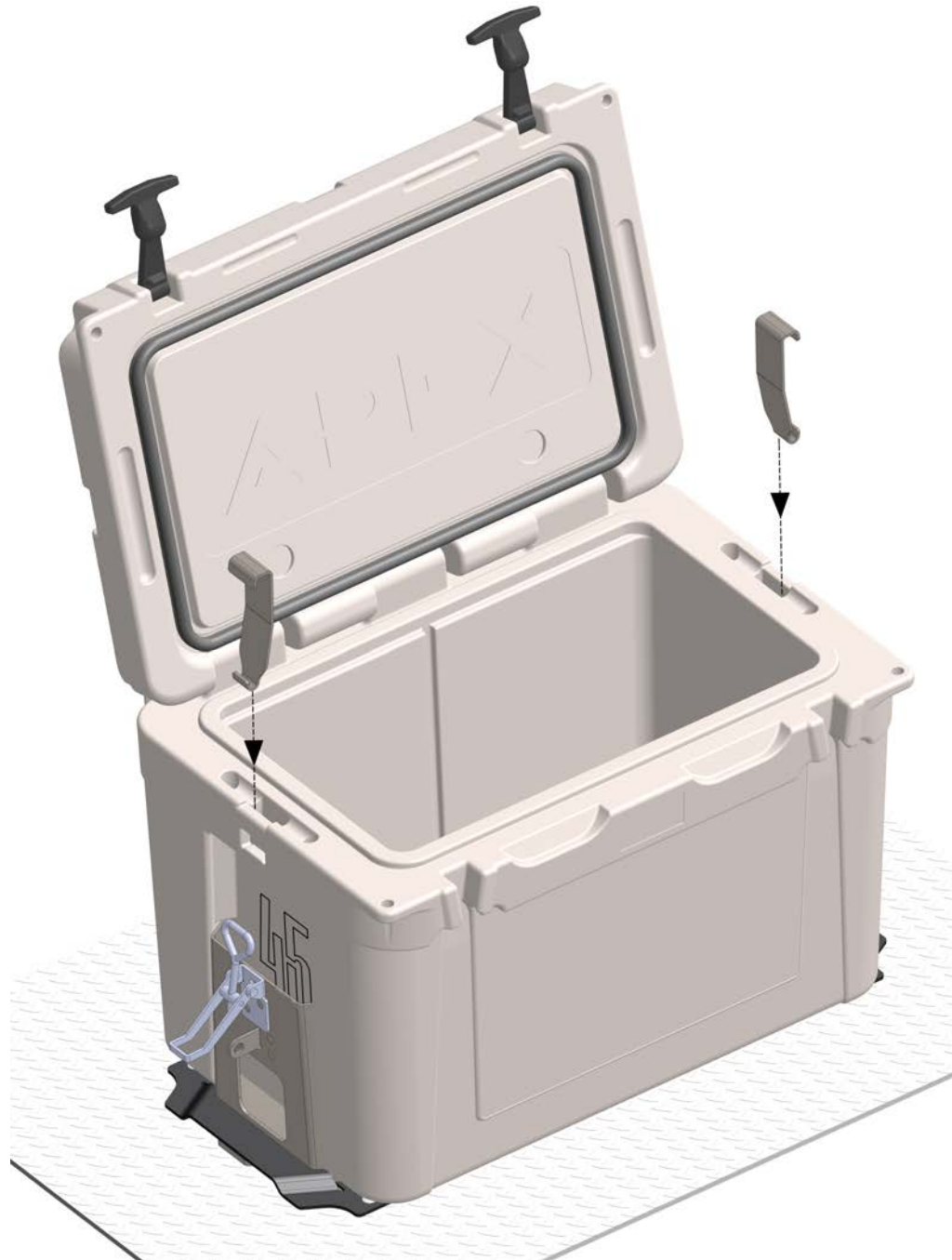
INSTALLATION OF GENERATION 2 BED RACK



STEP 7

Lift your A45 or A75 APEX cooler above the Bed Rack and lower the cooler so that the Wings integrate into the channels in the cooler sides. (This is to confirm the equipment is correctly installed before you tighten everything down.) Keep the cooler in place for the remainder of steps.

INSTALLATION OF GENERATION 2 BED RACK



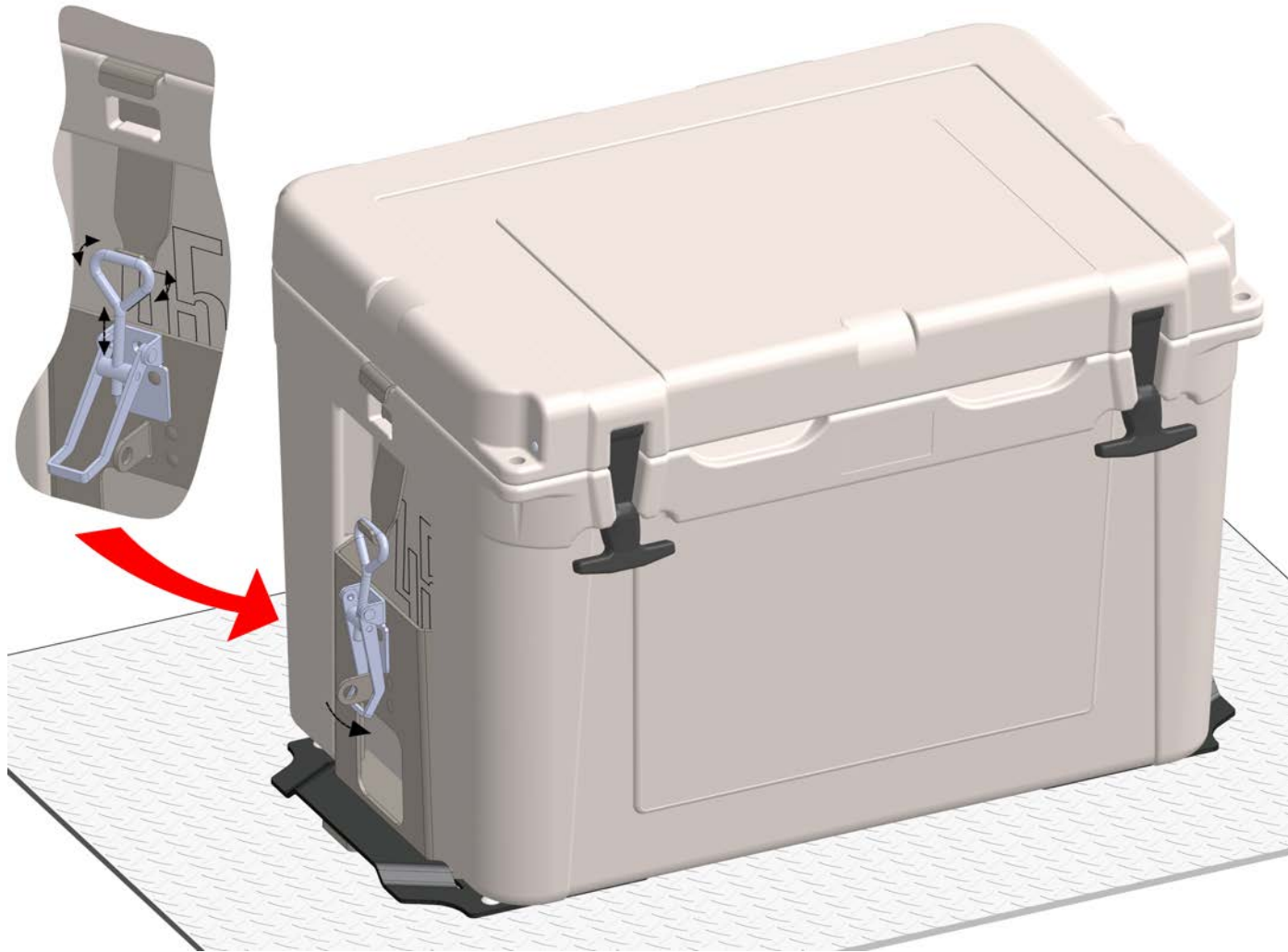
STEP 8

Slide the Cooler Straps through the slots on either side of the base of the cooler.

You may have to adjust the rope of the cooler handles out of the way to install the Cooler Straps. Due to the rigid manufacturing standards, slight force may be necessary to insert straps into the slots. We recommend leaving the Cooler Straps installed regardless if your cooler is secured in your Bed Rack or out of the Rack.

For safe keeping, the foam handles are designed to be tucked into the space between the cooler and the Wing. This will keep the rope handles from getting caught of other gear and from blowing in the wind.

INSTALLATION OF GENERATION 2 BED RACK



STEP 9

Because the A45 or A75 is made of rotationally molded plastic, you may need to adjust the length of the I-Bolt Latch to ensure that your A45 or A75 is secured to the Base Plate. However, you do not want to adjust the I-Bolt such that it is difficult to close once the formed steel bottom of the Cooler Strap is connected to the triangle opening of the I-Bolt as this will cause damaging stress to the rivets that are used to mount the I-Bolt Latch to the Wing.

INSTALLATION OF GENERATION 2 BED RACK

STEP 10

To further secure the cooler, place the Latch Cover over one of the latches. Insert the bottom of the Cooler Strap into the opening at the top of the Latch Cover.



INSTALLATION OF GENERATION 2 BED RACK



STEP 11

Pull the Latch up and hook it to the bottom of the Cooler Strap on either side of the cooler. Run the Latch Cover slight up the Cooler Strap so that you have room to secure the triangle opening of the I-Bolt onto the curved piece at the bottom of the Cooler Strap. Then, lower Latch Cover so that the Latch Handle comes through the opening in the Latch Cover. Next, fully close the Latch.

For an extra layer of protection, you may padlock both sides of your cooler with or without a Latch Cover. Also you may purchase a second Latch Cover (sold separately at www.apexcoolers.com).

INSTALLATION OF GENERATION 2 BED RACK



STEP 12

To fully secure your cooler into place, insert a lock through either padlock hole near the latch handle.

Note that the padlock holes can take up to a 3/8 inch shackle diameter lock.



APEX

COOLER SYSTEM

APEXCOOLERS.COM