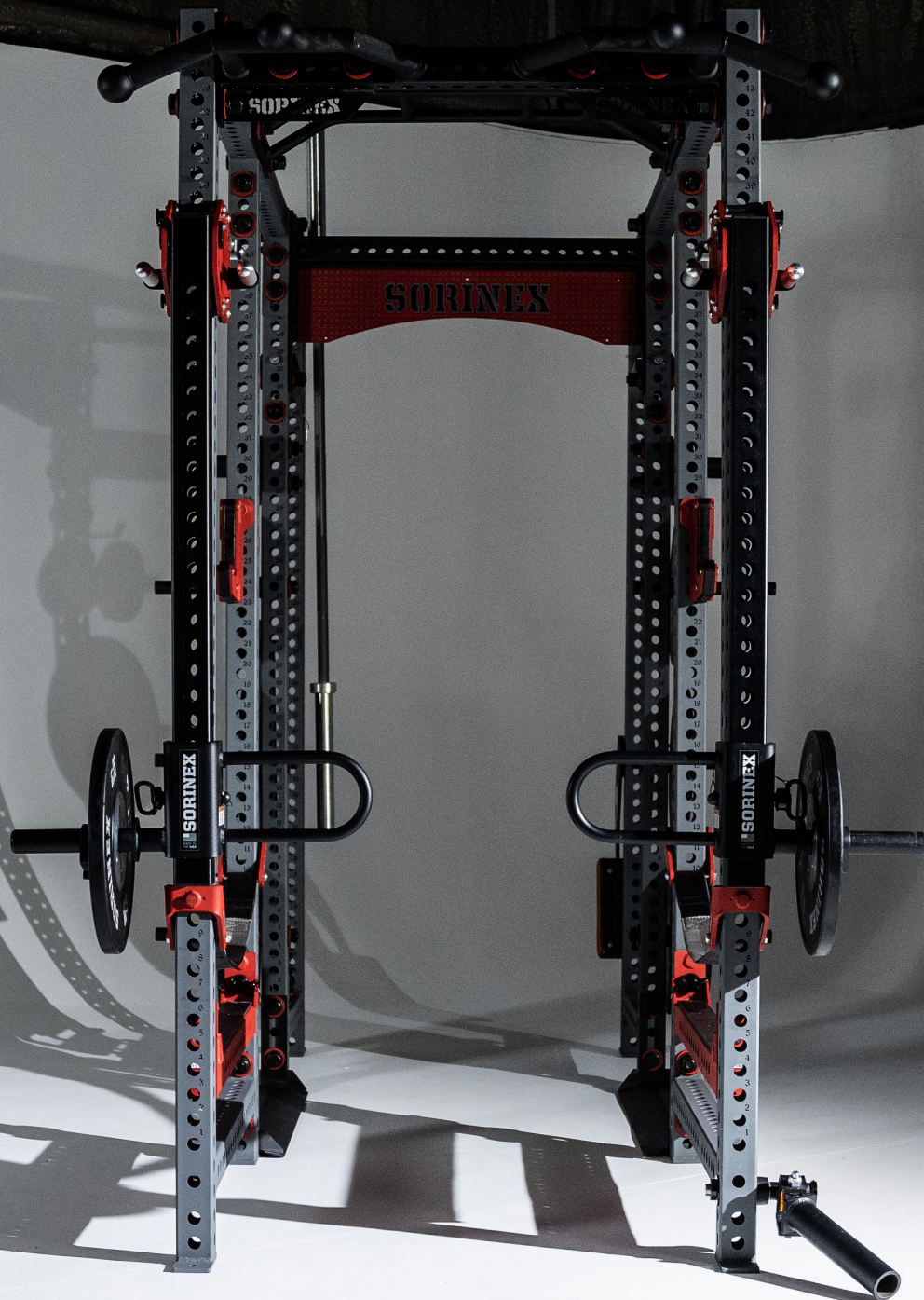


SORINEX
EXERCISE EQUIPMENT

BASE CAMP™

THE ORIGIN OF THE MODERN DAY POWER RACK

MADE IN
THE USA 



BASE CAMP™ SERIES HALF RACK



BASE PACKAGE

The Sorinex Base Camp Half Rack is a straight forward training solution designed for smaller spaces that need to maintain coaching site lines. The Base Camp Half Rack offers a smaller footprint than a traditional Power Rack while featuring the industry leading versatility, durability, safety, and customization you have come to know. As you grow, the Base Camp Half Rack grows with you via new attachments, storage, and accessories.

| | |
|----------------|---------------------|
| TUBING | 3" x 3" |
| DEPTH | 64" |
| WIDTH | 47" |
| HEIGHT | 101.62" |
| NUMBERED HOLES | Yes |
| MATERIALS | 11 or 7 Gauge Steel |

ATTACHMENTS INCLUDED



SANDWICH STYLE J-HOOK (1 PAIR)



HALF SPOTTERS (1 PAIR)



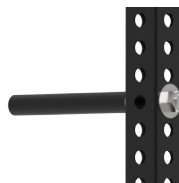
BATWING CHIN BAR (1)



CUSTOM LOGO ARCH (1)



SINGLE BAR STORAGE (1)



PERMANENT URETHANE PINS (8)



SPLIT CHANGE URETHANE PIN (2)

BASE CAMP™ SERIES HALF RACK UBER PACKAGE



UBER PACKAGE

The Sorinex Base Camp Half Rack is a straight forward training solution designed for smaller spaces that need to maintain coaching site lines. The Base Camp Half Rack offers a smaller footprint than a traditional Power Rack while featuring the industry leading versatility, durability, safety, and customization you have come to know. As you grow, the Base Camp Half Rack grows with you via new attachments, storage, and accessories.

| | |
|----------------|---------------------|
| TUBING | 3" x 3" |
| DEPTH | 64" |
| WIDTH | 47" |
| HEIGHT | 101.62" |
| NUMBERED HOLES | Yes |
| MATERIALS | 11 or 7 Gauge Steel |

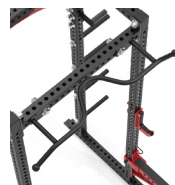
ATTACHMENTS INCLUDED



SANDWICH STYLE J-HOOK (1 PAIR)



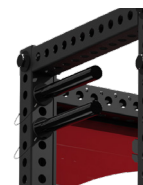
HALF SPOTTERS (1 PAIR)



BATWING CHIN BAR (1)



CUSTOM LOGO ARCH (1)



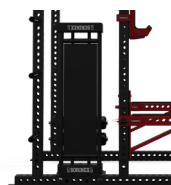
ADJUSTABLE URETHANE PINS (4)



PERMANENT URETHANE PINS (10)



LANDMINE (1)



UTILITY SEAT (1)



ROLLER PADS (2)



2-BAR / UTILITY SEAT STORAGE (1)



SPLIT CHANGE URETHANE PIN (2)

BASE CAMP™ SERIES SINGLE RACK



BASE PACKAGE

The Sorinex Base Camp Single Rack is a professional training solution designed for smaller spaces that need the functionality and safety of training inside the rack. The Base Camp Single Rack offers a smaller footprint than a traditional Power Rack while featuring the industry leading versatility, durability, safety, and customization you have come to know. As you grow, the Base Camp Single Rack grows with you via new attachments, storage, and accessories.

| | |
|----------------|---------------------|
| TUBING | 3" x 3" |
| DEPTH | 53.5" |
| WIDTH | 47" |
| HEIGHT | 101.62" |
| NUMBERED HOLES | Yes |
| MATERIALS | 11 or 7 Gauge Steel |

ATTACHMENTS INCLUDED



SANDWICH STYLE
J-HOOK (1 PAIR)



SAFETY STRAPS
(1 PAIR)



BATWING CHIN BAR
(1)



CUSTOM LOGO ARCH
(1)



SINGLE BAR
STORAGE (1)

BASE CAMP™ SERIES SINGLE RACK UBER PACKAGE



UBER PACKAGE

The Sorinex Base Camp Single Rack is a professional training solution designed for smaller spaces that need the functionality and safety of training inside the rack. The Base Camp Single Rack offers a smaller footprint than a traditional Power Rack while featuring the industry leading versatility, durability, safety, and customization you have come to know. As you grow, the Base Camp Single Rack grows with you via new attachments, storage, and accessories.

| | |
|----------------|---------------------|
| TUBING | 3" x 3" |
| DEPTH | 53.5" |
| WIDTH | 47" |
| HEIGHT | 101.62" |
| NUMBERED HOLES | Yes |
| MATERIALS | 11 or 7 Gauge Steel |

ATTACHMENTS INCLUDED



SANDWICH STYLE J-HOOK (1 PAIR)



SAFETY STRAPS (1 PAIR)



BATWING CHIN BAR (1)



CUSTOM LOGO ARCH (1)



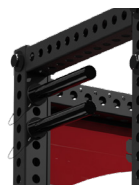
SINGLE BAR STORAGE (2)



LANDMINE (1)



ROLLER PADS (2)



ADJUSTABLE URETHANE PINS (6)

BASE CAMP™ SERIES POWER RACK



BASE PACKAGE

The Sorinex Base Camp Power Rack is the origin of the modern day power rack. It is the most versatile training rack ever created. The Base Camp design and name represents the start of your training journey. Featuring the industry leading versatility, durability, safety, customization, and storage options you have come to know. As you grow, the Base Camp Power Rack grows with you via new attachments, storage, and accessories.

| | |
|----------------|---------------------|
| TUBING | 3" x 3" |
| DEPTH | 74.5" |
| WIDTH | 47" |
| HEIGHT | 101.62" |
| NUMBERED HOLES | Yes |
| MATERIALS | 11 or 7 Gauge Steel |

ATTACHMENTS INCLUDED



SANDWICH STYLE J-HOOK (1 PAIR)



FULL SPOTTERS (1 PAIR)



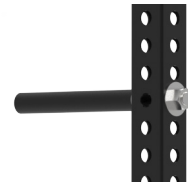
BATWING CHIN BAR (1)



CUSTOM LOGO ARCH (1)



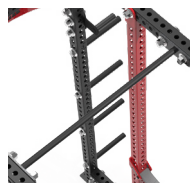
SINGLE BAR STORAGE (2)



PERMANENT URETHANE PINS (8)



SAFETY STRAPS (1 PAIR)



SINGLE CHIN BAR (1)



SPLIT CHANGE URETHANE PIN (2)

BASE CAMP™ SERIES POWER RACK UBER PACKAGE



UBER PACKAGE

The Sorinex Base Camp Power Rack is the origin of the modern day power rack. It is the most versatile training rack ever created. The Base Camp design and name represents the start of your training journey. Featuring the industry leading versatility, durability, safety, customization, and storage options you have come to know. As you grow, the Base Camp Power Rack grows with you via new attachments, storage, and accessories.

| | |
|----------------|---------------------|
| TUBING | 3" x 3" |
| DEPTH | 74.5" |
| WIDTH | 47" |
| HEIGHT | 101.62" |
| NUMBERED HOLES | Yes |
| MATERIALS | 11 or 7 Gauge Steel |

ATTACHMENTS INCLUDED



SANDWICH STYLE J-HOOK (2 PAIRS)



FULL SPOTTERS (1 PAIR)



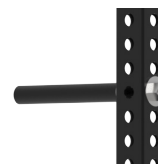
BATWING CHIN BAR (1)



CUSTOM LOGO ARCH (1)



ADJUSTABLE URETHANE PINS (6)



PERMANENT URETHANE PINS (8)



SAFETY STRAPS (1 PAIR)



LANDMINE (1)



HALF SPOTTERS (1 PAIR)



ROLLER PADS (2)



2-BAR / UTILITY SEAT STORAGE (1)



UTILITY SEAT (1)



INDEXING CHIN BAR (1 PAIR)



SPLIT CHANGE URETHANE PIN (2)

BASE CAMP™ SERIES DOUBLE HALF RACK



BASE PACKAGE

The Sorinex Base Camp Double Half Rack is a professional training solution for midsize spaces that need to increase carry capacity of room due to larger number of athletes training at one time. Featuring the industry leading versatility, durability, safety, customization, and storage options you have come to know. As you grow, the Base Camp Double Half Rack grows with you via new attachments, storage, and accessories.

| | |
|----------------|---------------------|
| TUBING | 3" x 3" |
| DEPTH | 74.5" |
| WIDTH | 47" |
| HEIGHT | 101.62" |
| NUMBERED HOLES | Yes |
| MATERIALS | 11 or 7 Gauge Steel |

ATTACHMENTS INCLUDED



SANDWICH STYLE J-HOOK (1 PAIR)



HALF SPOTTERS (2 PAIRS)



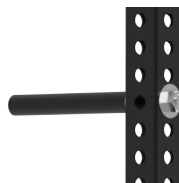
BATWING CHIN BAR (2)



CUSTOM LOGO ARCH (1)



SINGLE BAR STORAGE (2)



PERMANENT URETHANE PINS (8)



SPLIT CHANGE URETHANE PIN (2)

BASE CAMP™ SERIES DOUBLE HALF RACK UBER PACKAGE



UBER PACKAGE

The Sorinex Base Camp Double Half Rack is a professional training solution for midsize spaces that need to increase carry capacity of room due to larger number of athletes training at one time. Featuring the industry leading versatility, durability, safety, customization, and storage options you have come to know. As you grow, the Base Camp Double Half Rack grows with you via new attachments, storage, and accessories.

| | |
|----------------|---------------------|
| TUBING | 3" x 3" |
| DEPTH | 74.5" |
| WIDTH | 47" |
| HEIGHT | 101.62" |
| NUMBERED HOLES | Yes |
| MATERIALS | 11 or 7 Gauge Steel |

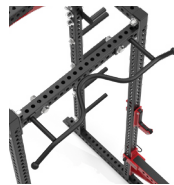
ATTACHMENTS INCLUDED



SANDWICH STYLE
J-HOOK (1 PAIR)



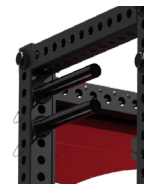
HALF SPOTTERS
(2 PAIRS)



BATWING CHIN BAR
(2)



CUSTOM LOGO ARCH
(1)



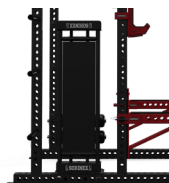
ADJUSTABLE
URETHANE PINS (6)



PERMANENT
URETHANE PINS (8)



LANDMINE
(2)



UTILITY SEAT
(1)



ROLLER PADS
(2)



2-BAR / UTILITY
SEAT STORAGE (2)



SPLIT CHANGE
URETHANE PIN (2)

BASE CAMP™ SERIES RACK AND A HALF



BASE PACKAGE

The Sorinex Base Camp Rack & Half is a professional training solution for larger spaces that need a traditional power rack solution with additional training options for larger teams and groups. Featuring the industry leading versatility, durability, safety, customization, and storage options you have come to know. As you grow, the Base Camp Rack & Half grows with you via new attachments, storage, and accessories.

| | |
|----------------|---------------------|
| TUBING | 3" x 3" |
| DEPTH | 96" |
| WIDTH | 47" |
| HEIGHT | 101.62" |
| NUMBERED HOLES | Yes |
| MATERIALS | 11 or 7 Gauge Steel |

ATTACHMENTS INCLUDED



SANDWICH STYLE J-HOOK (2 PAIRS)



FULL SPOTTERS (1 PAIR)



BATWING CHIN BAR (1)



CUSTOM LOGO ARCH (DOUBLE SIDED)



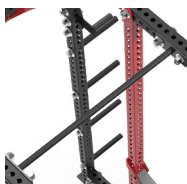
SINGLE BAR STORAGE (2)



PERMANENT URETHANE PINS (8)



SAFETY STRAPS (1 PAIR)



SINGLE CHIN BAR (1)



HALF SPOTTERS (1 PAIR)



SPLIT CHANGE URETHANE PIN (2)

BASE CAMP™ SERIES RACK AND A HALF UBER PACKAGE



UBER PACKAGE

The Sorinex Base Camp Rack & Half is a professional training solution for larger spaces that need a traditional power rack solution with additional training options for larger teams and groups. Featuring the industry leading versatility, durability, safety, customization, and storage options you have come to know. As you grow, the Base Camp Rack & Half grows with you via new attachments, storage, and accessories.

| | |
|----------------|---------------------|
| TUBING | 3" x 3" |
| DEPTH | 96" |
| WIDTH | 47" |
| HEIGHT | 101.62" |
| NUMBERED HOLES | Yes |
| MATERIALS | 11 or 7 Gauge Steel |

ATTACHMENTS INCLUDED



SANDWICH STYLE J-HOOK (3 PAIRS)



FULL SPOTTERS (1 PAIR)



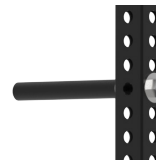
BATWING CHIN BAR (1)



CUSTOM LOGO ARCH (DOUBLE SIDED)



ADJUSTABLE URETHANE PINS (6)



PERMANENT URETHANE PINS (8)



SAFETY STRAPS (1 PAIR)



SINGLE CHIN BAR (1)



LANDMINE (2)



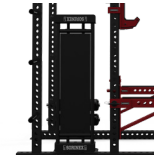
HALF SPOTTERS (2 PAIRS)



ROLLER PADS (2)



2-BAR / UTILITY SEAT STORAGE (2)



UTILITY SEAT (1)



INDEXING CHIN BAR (1 PAIR)



SPLIT CHANGE URETHANE PIN (2)

BASE CAMP™ SERIES DOUBLE FULL RACK



BASE PACKAGE

The Sorinex Base Camp Double Full Rack is a professional training solution for extra large spaces that need twice the footprint of a traditional power rack solution while still maximizing floor space. Featuring the industry leading versatility, durability, safety, customization, and storage options you have come to know. As you grow, the Base Camp Double Half Rack grows with you via new attachments, storage, and accessories.

| | |
|----------------|---------------------|
| TUBING | 3" x 3" |
| DEPTH | 140.88" |
| WIDTH | 47" |
| HEIGHT | 101.62" |
| NUMBERED HOLES | Yes |
| MATERIALS | 11 or 7 Gauge Steel |

ATTACHMENTS INCLUDED



SANDWICH STYLE J-HOOK (2 PAIRS)



SAFETY STRAPS (2 PAIRS)



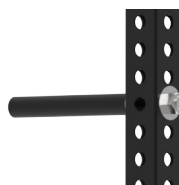
BATWING CHIN BAR (2)



CUSTOM LOGO ARCH (DOUBLE SIDED)



SINGLE BAR STORAGE (4)



PERMANENT URETHANE PINS (8)



SPLIT CHANGE URETHANE PIN (2)

BASE CAMP™ SERIES DOUBLE FULL UBER PACKAGE



UBER PACKAGE

The Sorinex Base Camp Double Full Rack is a professional training solution for extra large spaces that need twice the footprint of a traditional power rack solution while still maximizing floor space. Featuring the industry leading versatility, durability, safety, customization, and storage options you have come to know. As you grow, the Base Camp Double Half Rack grows with you via new attachments, storage, and accessories.

| | |
|----------------|---------------------|
| TUBING | 3" x 3" |
| DEPTH | 140.88" |
| WIDTH | 47" |
| HEIGHT | 101.62" |
| NUMBERED HOLES | Yes |
| MATERIALS | 11 or 7 Gauge Steel |

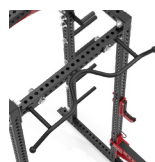
ATTACHMENTS INCLUDED



SANDWICH STYLE J-HOOK (4 PAIRS)



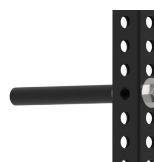
FULL SPOTTERS (2 PAIRS)



BATWING CHIN BAR (2)



CUSTOM LOGO ARCH (DOUBLE SIDED)



PERMANENT URETHANE PINS (8)



SAFETY STRAPS (2 PAIRS)



SPLIT CHANGE URETHANE PIN (2)



LANDMINE (2)



HALF SPOTTERS (2 PAIRS)



ROLLER PADS (2)



2-BAR / UTILITY SEAT STORAGE (2)



ADJUSTABLE URETHANE PINS (8)



UTILITY SEAT (2)



INDEXING CHIN BAR (2 PAIRS)

