



CASE STUDIES

Creating inspiring environments
where people are motivated to succeed

www.foursquarefurniture.uk

RECEPTION

OFFICE

STAFFROOM

CLASSROOM

NURSERY

LIBRARY

HALL

DINING AREA

IT SUITE

KITCHEN

LEARNING ZONE

WASHROOM AND TOILET

LOCKER AREA

ART ROOM

SIXTH FORM

SOCIAL AND COMMUNITY AREA

MEETING ROOM

MEDICAL

LABORATORY

FOOD TECH ROOM

OUTDOOR AREA

INTRODUCING FOUR SQUARE

Creating inspiring environments where people are motivated to succeed.

The name Four Square is the embodiment of the products and services which we are recognised and respected for in the world of FF&E Consultancy, educational furniture and space planning.

We work with all types of educational establishments to revolutionise learning space and effectiveness for every client.

We offer a FREE space planning and design service which covers all school areas and is complete with scale drawings and impressive 3D renderings.

In any design proposal the company's consultants consider economy of space, operational efficiency and functionality, flexibility, personal taste and choice, a school's coordinated corporate imagery, colour themes as well as financial constraints.

Solutions can be 'off the shelf' or entirely bespoke, but a combination of such options can often meet all requirements.

We have worked with staff at all levels of the education world and we have over 80 years of combined experience – **what can we do for you?**



FURNITURE FOR NEW SIXTH FORM BUILDING

Ruislip High School, Ruislip, Middlesex

PROJECT VALUE

£58,000

The new sixth form building was a huge investment and the space needed to reflect both the school's branding and ethos and provide a more grown-up space for the sixth form students. The building consisted of six classrooms, quiet study areas, group collaboration spaces as well as a cafeteria within the sixth form social space and a new staff room. Being a new building gave us a large blank canvas with which to work, which meant that we had to carefully plan the layout to make best use of the space.

We thought it was important that the sixth form area was a more grown-up space, helping to prepare

students for higher education and the world of work. The social space was designed as several different zones, and we used different furniture to reflect the nature of each space. The middle and upper floors of the building were designed as study areas with high back booths for group work alongside desks for quiet, individual study spaces. Acoustics and visual privacy were also a key consideration, so we included bespoke acoustic desk screens to reduce echo and distractions and promote self-study.

The new sixth form building has been very well-received by both students and school staff, providing a modern, bright and flexible space which really sets the school apart. Sixth form students now have a dedicated space where they can socialise and study, that gives them a sense of responsibility and that will prepare them for life beyond school.



FURNITURE FOR NEW FREE SCHOOL

The Reach Free
School, Watford

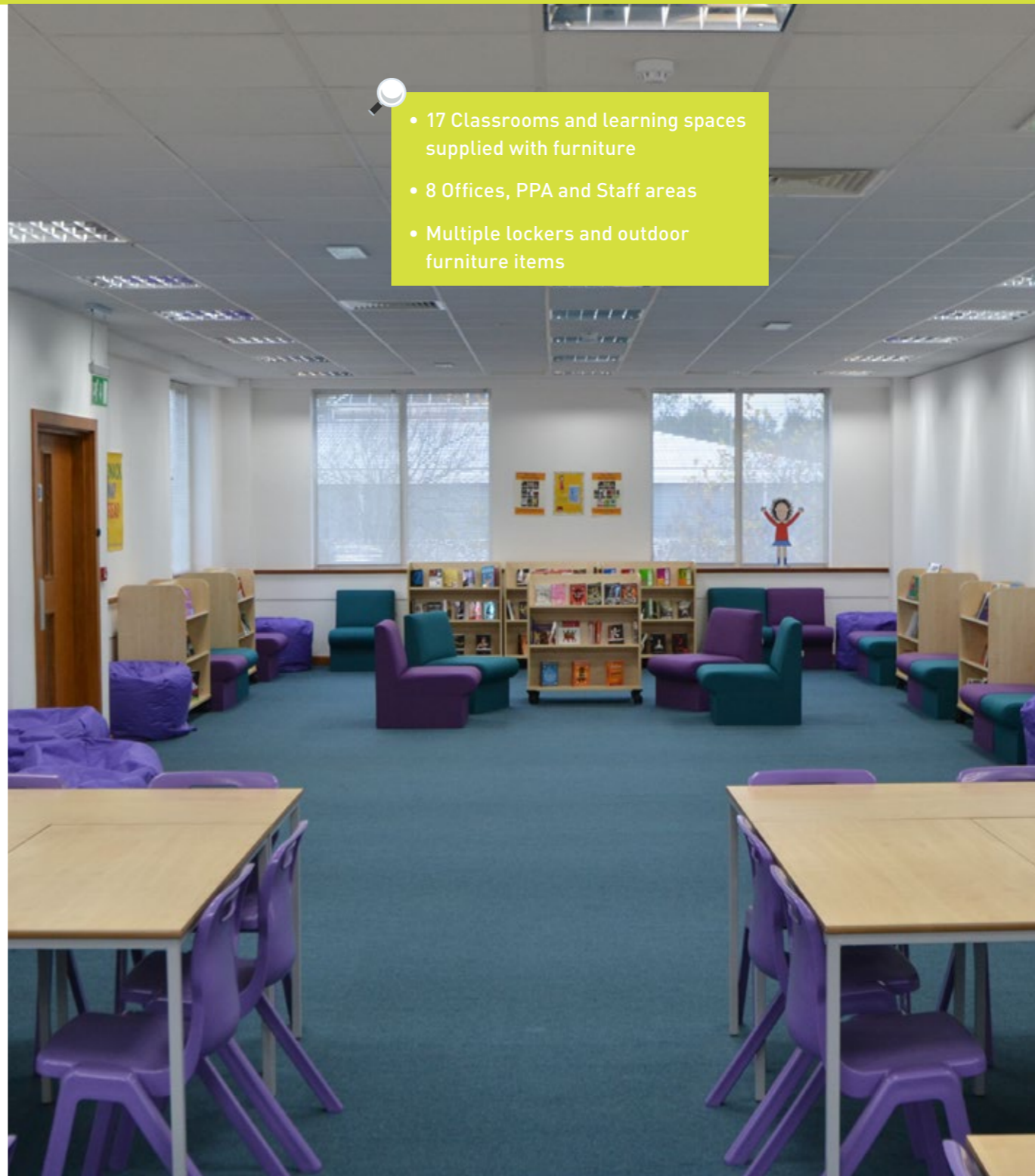
PROJECT VALUE

£180,000

We successfully supplied all the furniture for a new Free School in Watford. The main brief was that all furniture needed to be mobile so that it can be moved to their new building in 3 years' time. We were able to work with the client on this and provide some bespoke solutions to meet their exact requirements.

It included 150 classroom tables, 300 classroom chairs, classroom storage, fitted IT benching, library furniture, reception counter, folding dining tables, cloakroom furniture, soft seating, lockers, staffroom seating, office furniture, operators chairs and mobile laboratory units.

- 17 Classrooms and learning spaces supplied with furniture
- 8 Offices, PPA and Staff areas
- Multiple lockers and outdoor furniture items





SIXTH FORM BLOCK

Finchley Catholic High School,
Finchley, London

PROJECT VALUE

£45,000

This is a purpose built sixth form block on two floors including; a large learning zone, offices, reception area, 6 classrooms, careers room, meeting room and ICT suite.

We worked with the school and the architect to come up with a complete specification backed up with 3D renders. Our proposal reflected the architect's colour scheme to differentiate between the classrooms, learning areas, ICT and meeting rooms. This project included; classroom tables, classroom chairs, sofas, stools, ICT benching, operator's chairs, office desks, storage, study booths and a reception desk.

FURNITURE FOR NEW BUILD

Our Lady and St Joesph's Catholic Primary School, East London

PROJECT VALUE

£230,000

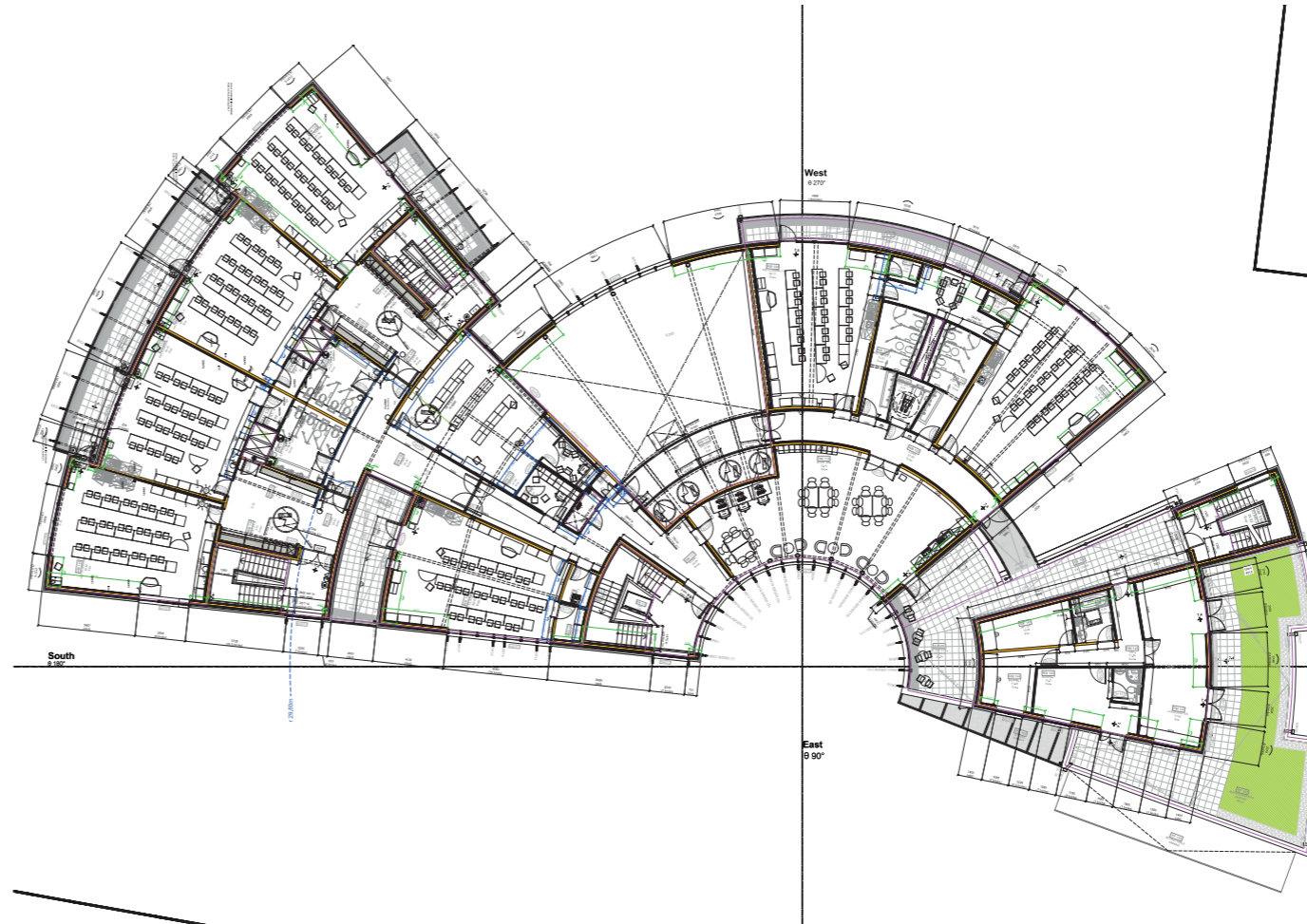
Two schools merged together into a state of the art new build school. We won the tender process for this new school and provided fitted and loose furniture. We worked with the architect and the school to provide classroom furniture, folding dining tables, fitted office storage, operator's chairs, soft seating, office desks and nursery furniture.



A total of 1,909 separate furniture and equipment items throughout 47 rooms across 3 floors.

Including:

- Nursery furniture and equipment
- Classroom tables
- Classroom chairs
- Staffroom furniture
- Fitted storage
- Acoustic panels
- Whiteboards
- Noticeboards
- Stools
- Office furniture
- Waste bins
- Sports equipment
- Outdoor furniture
- Storage racking
- Full installation of all items



INNOVATIVE CLASSROOM REFURBISHMENTS

Pinchmill Primary School, Bedford

PROJECT VALUE

£13,000

The staff at the school were keen for us to design a classroom style to cater for the needs of different learning styles.

After gaining an understanding of the design brief from the Head Teacher, our Consultant then met with a committee of young students and together they decided on the furniture, colours and finishes they preferred.

There are different heights of table, different shapes and different seating styles. This enables students to choose the style that suits them best, to advance their learning in the most productive way, every single day.



- Student rocking chairs
- Hanging chair
- Multi-tiered classroom furniture



STAFFROOM

Finchley Catholic High School, North London

PROJECT VALUE

£23,000

We were asked to design a layout that enabled teacher study and relaxation as separate areas. We achieved this by providing room dividing storage incorporating pigeon holes for all staff members. This project also included a glass notice board, bespoke magazine rack, soft seating, tables, operator's chairs and workstations.

LEARNING SUPPORT ROOM & PROFESSIONAL STAFF OFFICES

Barnfield College, Luton

PROJECT VALUE

£60,000

In this case, we worked with a consultant that the college was using for refurbishment projects. This included working with him to come up with designs and a full proposal. There was a very tight time schedule to work to which we achieved. The project included desks, cupboards, soft seating, operator's chairs and desk screens.

The learning support area was designed as a multiuse area for additional learning. We came up with a design to incorporate soft seating, round tables and study booths for the different learning styles. There was an emphasis on screens through the area to allow focused working either individually or with a tutor.



DINING HALL

Cox Green
Secondary School,
Maidenhead

PROJECT VALUE

£20,000

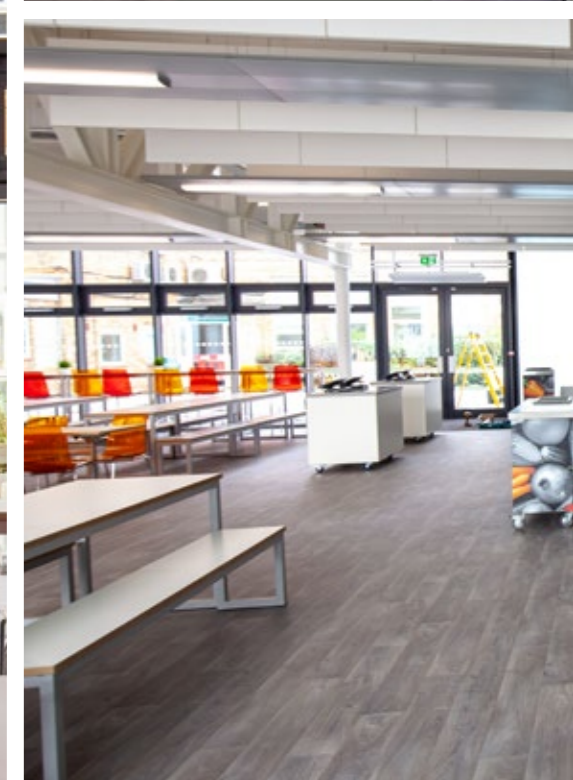
As part of a £4.7 million expansion programme, we were tasked with creating a new design-led school dining hall for the school, housed within a new building.

One of the key design challenges of this project was ensuring there was adequate space for queuing at the tills without compromising on seating capacity. Our design also had to work with the school's existing table and bench sets, which we were required to match.

For maximum flexibility and efficient storage we chose robust tilt top tables with lockable castors, allowing the tables to be moved easily and quickly. The tilting table tops allow them to nest together for storage in a small space, providing a clear floor for efficient cleaning.

We introduced colour into the dining hall by specifying chairs and bar stools in translucent orange and red, which complemented the existing white and plywood table and bench sets giving the space a bright, modern feel.

The café style venue is a far cry from the standard functional school dining hall, delivering new destination style dining venue that will last for many years.



SOCIAL AND STUDY AREA

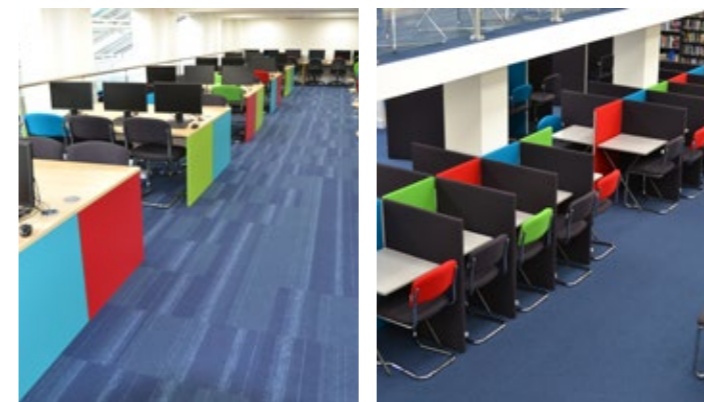
Jewish Community Secondary School (JCoSS), Barnet, London

PROJECT VALUE

£55,000

We worked closely with the school to provide a complete overhaul of the furniture in the sixth form social and study area, which included soft seating, café style seating and tables, some bespoke IT cluster pods and a kitchen area.

The end result needed areas for group work, single study pods, IT area, kitchen and cafe area that we provided full 3D renders for so our client could visualise what the finished project would look like.



LIBRARY

St Dominic's Sixth Form College, Harrow, Middlesex

PROJECT VALUE

£57,000

It was decided that the library needed a major refurbishment and Four Square were chosen to provide comprehensive designs and colour schemes. We worked closely with the Librarians, Site Staff, Head Teacher and Bursar to arrive at a solution that met every requirement. It needed to reflect bold colour without being too 'primary' and fit in with their college procedures. Flexible, robust and ergonomic furniture enabled us to deliver a practical solution with a real wow factor.

7 WASHROOMS

Fulham Preparatory School, Fulham, London

PROJECT VALUE

£174,000

We were contracted to complete a full refurb of seven washrooms including strip out over the six-week summer holiday break.

All the cubicles were manufactured from solid grade laminate with anodized aluminium fixings and we also accommodated the specific need for solid surface wash troughs with an economical yet elegant option. We also installed two shower facilities in the staff washrooms.

Our experience, project planning and product knowledge enabled us to complete all seven washrooms on time and on budget.



- Children's washrooms
- Staff washrooms
- Shower facilities



FURNITURE FOR A NEW BUILD EXTENSION

Kings Hedges School, Cambridge

On this project, the school had a very clear idea of what they wanted to achieve so we worked closely with them to fulfil those requirements.

The project included: 8 classrooms, multi-use hall, PPA room, offices and staffroom. Products we delivered and installed included: Bespoke teaching walls, classroom desks, chairs, office desks, fitted bespoke storage, bespoke mobile bookshelves, meeting tables, office chairs, soft seating in the staffroom and flip top dining tables. The colour scheme was white and dark grey so we could make sure different items matched and were coordinated.

The school required the hall to have multiple uses, so we supplied demountable staging, stage lighting, stage curtains, flip top tables, fitted storage and stacking chairs. The school can use the hall area for plays, dining, PE activities, parents' evenings and more.

PROJECT VALUE

£127,000



WATCH THE VIDEO HERE

SIXTH FORM AREA

Mark Rutherford
School, Bedford

PROJECT VALUE

£17,000

This school wanted to reward the sixth form students and give them a sense of ownership and responsibility. They were included in the initial design process to make sure our consultant, the school staff and the student's vision were aligned.

This area provides a space for informal study, group collaboration and comfortable dining.

We supplied all the soft seating and tables using vinyl coverings and hard wearing laminates for a hygienic and durable solution.



COFFEE LOUNGE

Barnfield College,
Luton

PROJECT VALUE

£14,000

We worked with our client to provide an interesting and aesthetically pleasing area which students could use for informal learning and collaboration. This project included soft seating, tables, IT workstations and operator's chairs.



- 12 Classrooms with bespoke Teacher Wall
- Reception area
- All loose furniture
- Final decoration



CLASSROOM REFURBISHMENT

Applecroft Primary
School, Welwyn Garden
City, Hertfordshire

PROJECT VALUE

£215,000

We worked closely with the school on this multi-phase project to re-design and refurbish classrooms for all seven year groups, consisting of 12 classrooms and one big reception area.

Teacher desks were orientated towards the students with discreet storage beneath. The sink units were re-designed with pull down 1500mm lockable tambours and we also introduced Teaching Walls that were adapted to match the available space in each classroom.

As well as this, we were also asked to source and provide the entire range of loose furniture for each classroom, creating a consistent look and feel for the entire school.



▶ WATCH THE VIDEO HERE

RECEPTION AREA, CAFÉ AND LEARNING RESOURCE CENTRE

Newham Sixth Form (New Vic), East London

PROJECT VALUE

£170,000

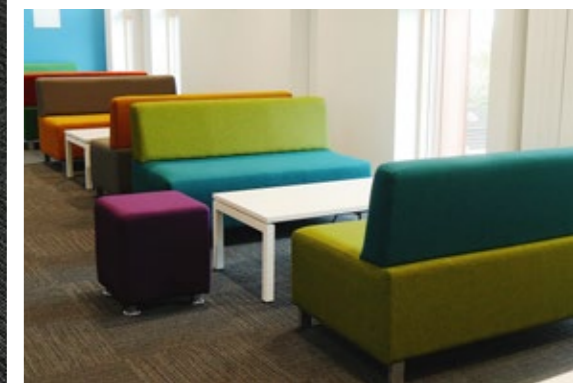
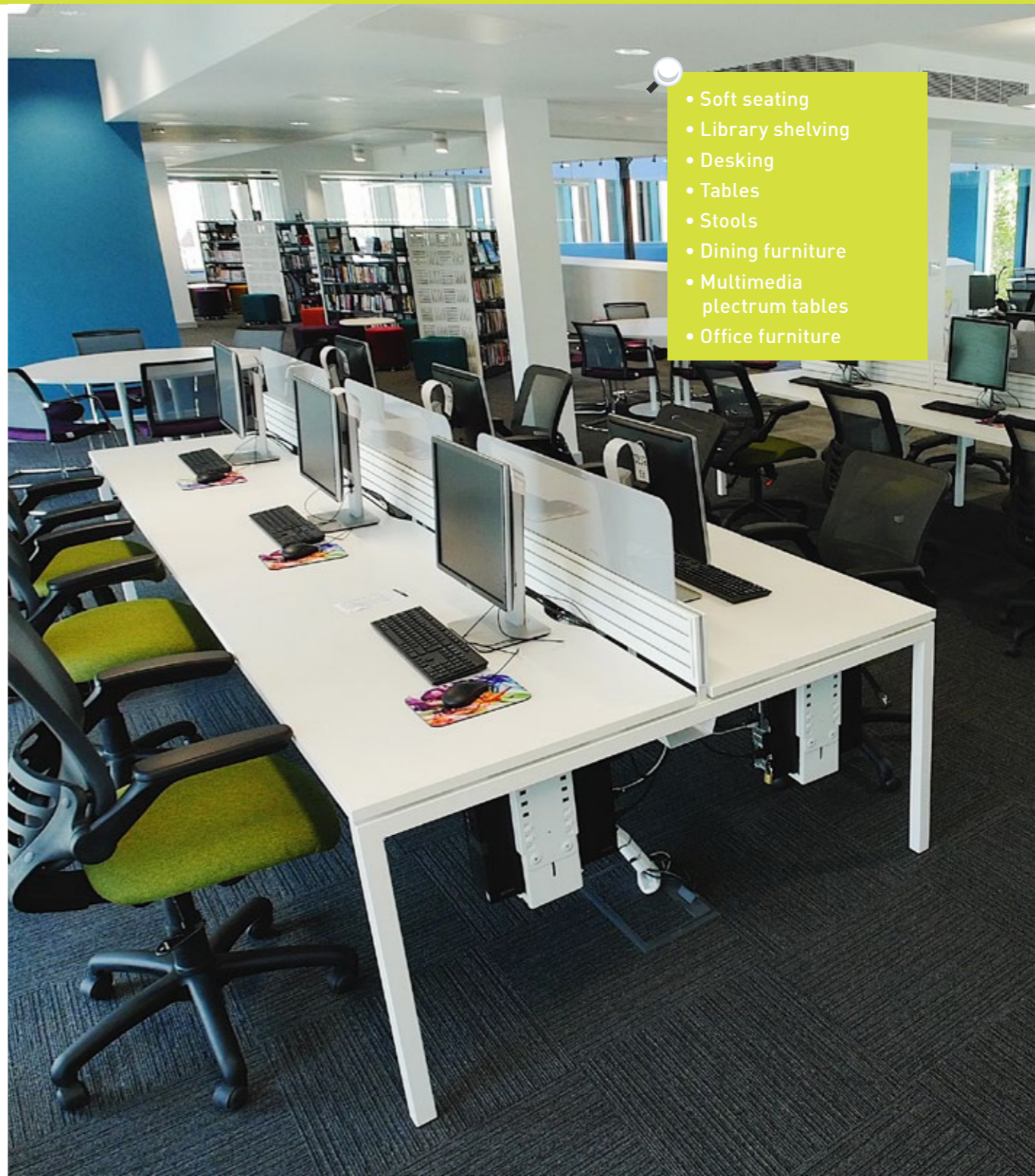
This was part of a £6 million investment for the college to create a stand-out new campus. It was important for the college to create something inspirational that would connect their students to university life before they actually got there.

We used plectrum tables as opposed to round or square tables as we felt these would create the right atmosphere and look and feel for the new resource centre and allow small groups of up to three

students to work together effectively. The plectrum tables were also selected as computer tables in the resource centre. We also included some larger pieces of furniture with soft seating where students can connect their mobile devices and work in a more relaxed, university style environment.

For the new café, we sourced bespoke chairs with a white front and a coloured, graphic faceted style back, creating a modern and creative café for students to relax and socialise.

Our design for the new learning resource centre delivered choice, students have a range of study areas designed and shaped with their specific study needs in mind. From individual areas to collaborative spaces, they can choose where and how they work to suit their needs.



LEARNING RESOURCE CENTRE

Jubilee High School,
Addlestone, Surrey

PROJECT VALUE

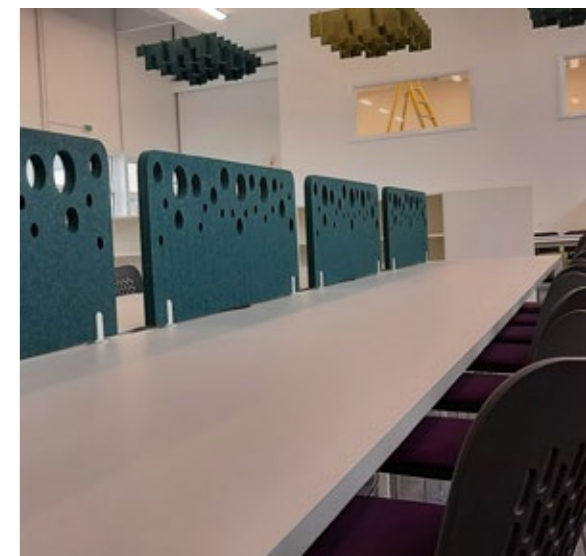
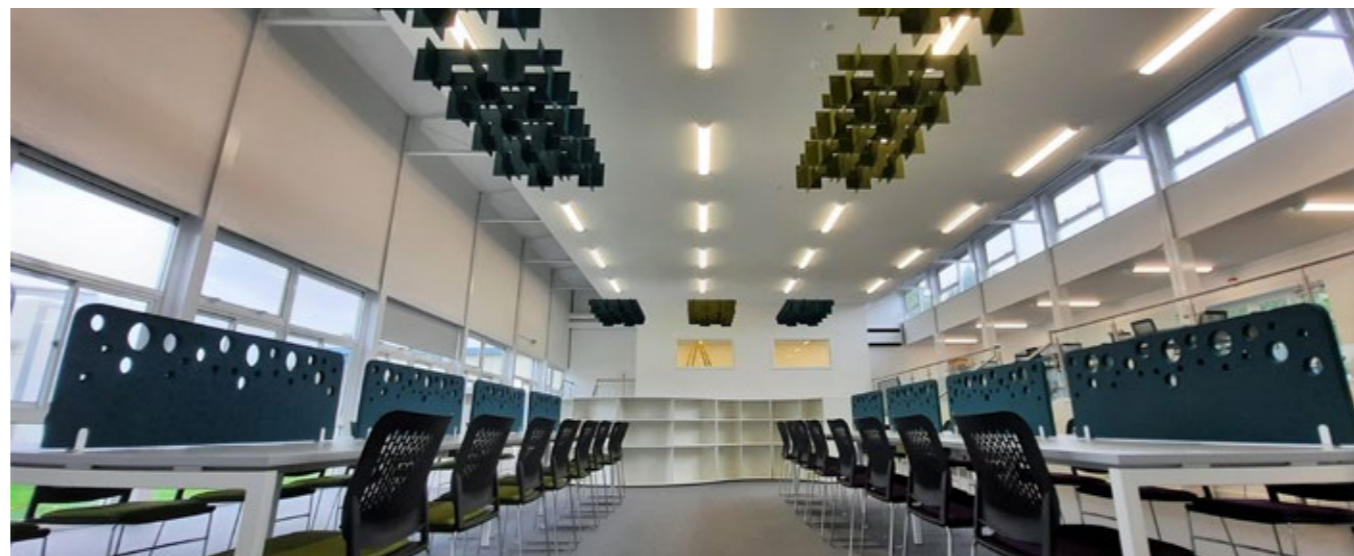
£28,000

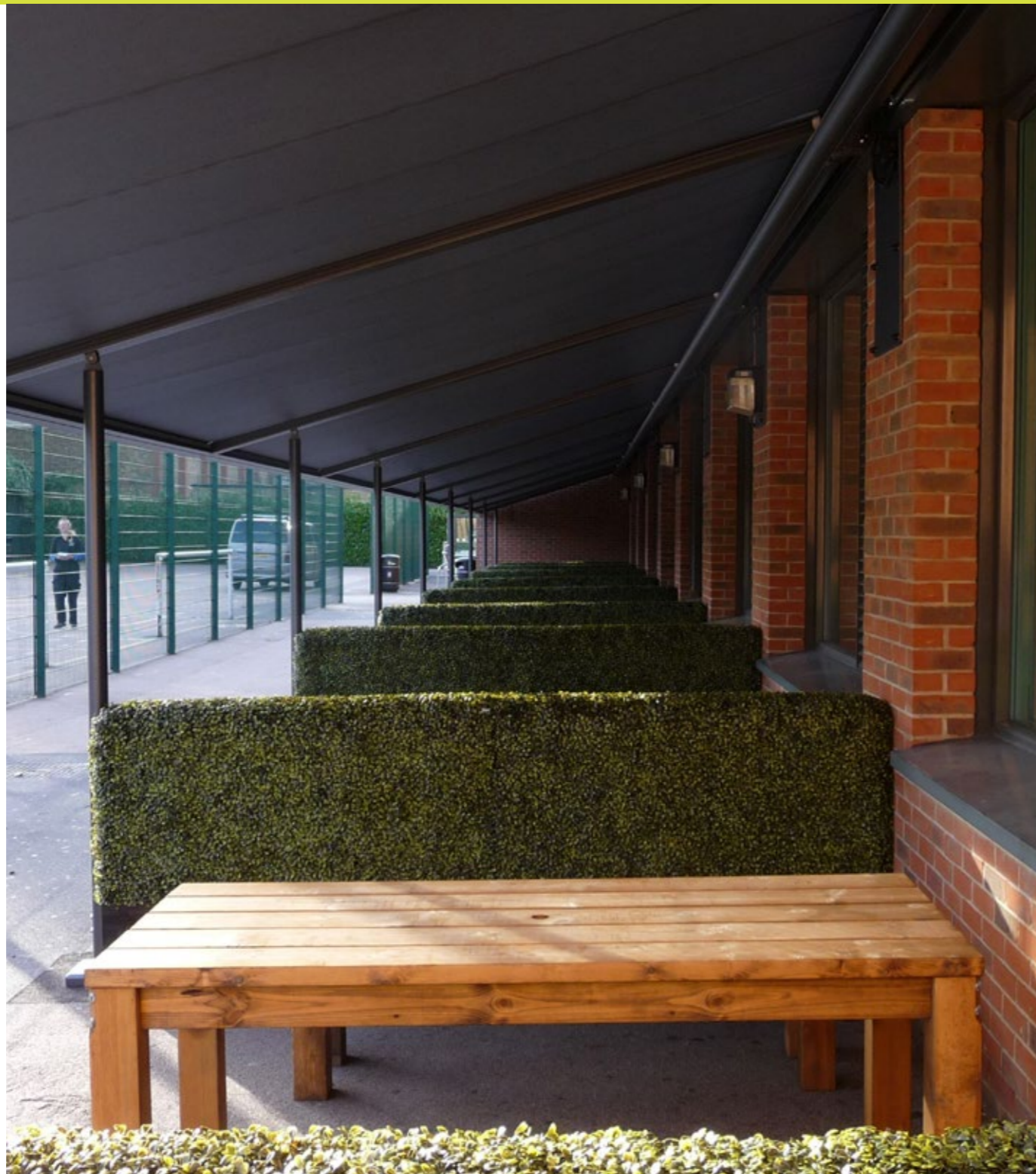
The leadership team at Jubilee High School wanted to create a flexible Learning Resource Centre that would accommodate both teacher-based and individual learning, in a style that reflected the new school branding.

It was a very large space that needed careful planning, so we supplied the school with two layout options for the senior team to discuss.

We installed various desking solutions including desks for computer work and individual study, curved mobile bookshelves in an 'S' shape to clearly separate each zone and on the upper level we included soft-seating, coffee tables, high tables and shaped poufes. The chairs were upholstered in a high quality, modern and long-lasting Camira fabric.

The large space also meant we had to manage the acoustics carefully, ensuring that noise and echo were absorbed efficiently. We used a mixture of acoustic ceiling grids as well as individual desk screens in the school's brand colours to support focussed work, deliver visual privacy and reduce distraction.





OUTDOOR AREA AND PLAYGROUND

Stratford School Academy, London

PROJECT VALUE

£60,000

We were thrilled to win the tender to help Stratford School Academy make the most of their outdoor area and playground. The aim was to deliver a flexible space to facilitate the growth in school population and make the most of the outside space.

We sourced and installed furniture that would be robust, long-lasting and at a competitive price. The tables had to accommodate the students being able to eat at them with trays/plates and the space had to work efficiently even in inclement weather.

It was also important to ensure that the outside space would be flexible and easy to use so we installed an electronically operated canopy making it easy to open and close, rather than a slower manually operated one.

With more emphasis on learning and socialising outdoors and the well-documented impact and importance of connecting to nature, we installed planters along the space to increase the greenery and give the area more of a 'grown-up' outdoor café style look and feel.



SIXTH FORM AREA

North London
Collegiate School,
Edgware, Middlesex

PROJECT VALUE

£11,000

We were tasked to come up with a solution to replace the old soft seating in the common rooms.

The end result needed to be hard wearing and have a relaxing feel. Our Azure sofas were used with high durability fabrics along with commercial grade foam that is designed to maintain its integrity under heavy usage.



- 15 Re-upholstered chairs
- 10 3-seater sofas and loose cushions

STAFFROOM

Cleves Primary School, East Ham, London

PROJECT VALUE

£27,000

The school contacted us to refurbish and update their staffroom to create a café style staffroom with a more homely environment for the staff to relax and recharge.

We incorporated a long run of functional yet stylish kitchen units with integrated appliances, flanked by a large poseur table in a very modern concrete finish with cosy faux leather bar height chairs, creating a modern and spacious area.

We used individual tables with solid stained wood tops along with the fixed banquette seating and burgundy and grey faux leather wooden chairs, providing flexibility for staff to use the space as they wish.



STAFFROOM

Parmiter's School, Watford, Hertfordshire

PROJECT VALUE

£13,000

One of our consultants worked with this school to provide a plan with 3D renders. We installed two shaped cluster pods with power poles so teachers could use IT equipment to prepare lessons. There was also some soft seating and a number of tables with conference chairs which could be used for group collaboration or dining.

- 125 Seats, stools and chairs



STAFFROOM

Waulud Primary
School, Luton

PROJECT VALUE

£11,500

We were asked by the school to design a new staffroom that was functional yet funky - an 'oasis' for staff to relax, meet and work in.

We combined standard products with a variety of bespoke pieces, including designing curved high-backed sofas creating a semi-circular statement feature in the middle of the room.

To ensure adequate storage we specified bespoke size cupboards to hold the pigeonhole units and supplied modular soft seating units, high bar stools, stylish dining chairs and supportive operator chairs all in colours to match the school's vibrant colour scheme.



STAFFROOM

Barclay Primary
School, East London

PROJECT VALUE

£12,000

We worked with our client to provide an upgrade of the staffroom furniture, which included soft seating, café style seating and tables and some bespoke storage with built in pigeon holes.

The client's requirement was to be able to get a greater number of staff seated in the staffroom. By using our modern yet cost effective Swing chair we were able to increase the number of seats from 36 to 51.

NEW BUILD YEAR 7 BLOCK

Brampton Manor
Academy, East Ham,
London

PROJECT VALUE

£145,000

Working closely with the school we listened to their specific needs and ideas for what they wanted to achieve with the layout, and we researched and recommended the most suitable furniture options and finishes to meet their needs.

The main areas we provided furniture for were the library, dining area and classrooms. We had to ensure that every item of furniture worked well together to create a seamless look and feel to the new building and that would also provide a safe, welcoming and stimulating learning environment for Year 7 as they start their journey at Secondary School.



MUSIC HUB RENOVATION

Sarah Bonnell School,
Stratford, London

PROJECT VALUE

£65,000

We were tasked to work with the school on an extension to the school's Music Hub with the addition of a new purpose-built cafeteria on the ground floor.

We delivered flexible classroom spaces for more dynamic work, with bespoke learning walls, stands and storage to accommodate the latest classroom technology. The cafeteria had a more 'restaurant' feel and the strong brand theme was achieved through bespoke colour matching furniture to the five school motto colours as well as designing and installing bold, eye-catching graphics.



Aspect Gate
1 Olds Approach
Watford Herts WD18 9RF

Tel: 01923 774242
Web: www.foursquarefurniture.uk
Email: sales@foursquarefurniture.uk