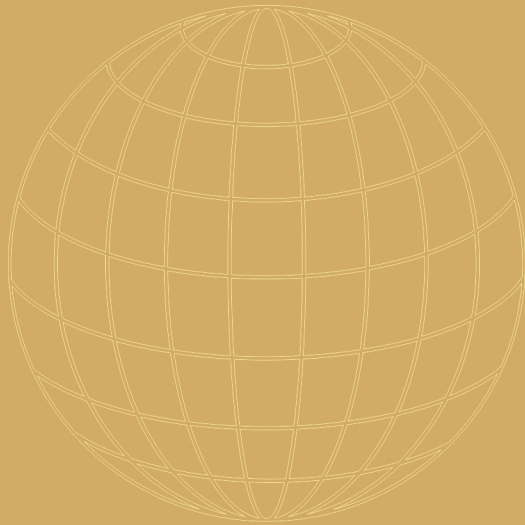


LUXURY SHOWER PANEL



PRODUCT MANUAL



**APOLLO DISTRIBUTION**

3006 Jericho Tpke,  
Elwood, NY, 11731

**CONTACT US**

Phone: 888-943-3338  
Email: [sales@apollo-us.com](mailto:sales@apollo-us.com)



# Apollo

## ATTENTION!!!

For warranty details please visit  
<http://www.apollo-us.com/>

- Apollo products must be installed by a Professional Contractor.
- Please read Instructions carefully before attempting to install
- Do NOT return to store if Defective or does not work.
- Contact us for parts or help with installation.
- Please see installation instructions for parts names and numbers if needed.
- Any damages resulted by the improper care and maintenance will not be covered by the product warranty.
- The shower panel is designed for indoor use ONLY.
- The showerhead and body jets may need to be cleaned occasionally due to the build-up of rust, lime or calcium, depending upon the chemistry of your water.
- Remove the showerhead and body jets before cleaning. Use the warm water and mild vinegar to soak the piece before cleaning it. Or you may need to use CLR or another hard water cleaner.
- All parts: for period of 3 year from the date of the original purchase.

**Enjoy your quality peace of Apollo**

Web: [www.apollo-us.com](http://www.apollo-us.com)  
Email: [sales@apollo-us.com](mailto:sales@apollo-us.com)  
Tel#: 1(888)-943-3338

Innovation   
Maintenance of shower panel

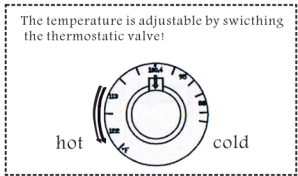
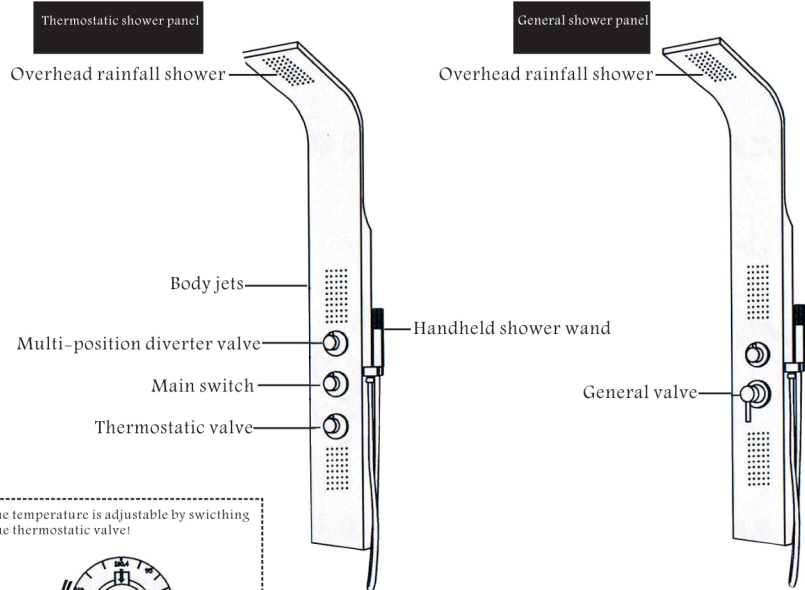
**SMART**  
Intelligent five file



## HIGHEND SHOWER PANELS

Before using our shower panel, please fully read the instructions carefully.

The instructions and safety information in this document are essential to the safe operation of your new unit.



Note, thermostatic shower panel with common shower panel installation is the same, constant temperature faucet of the inlet pipe to connect right, Red hot water hose, green hose cold water.



### Read Before Using Your New Shower Panel

Congratulations on purchasing our Shower Panel. Your new shower panel will be a great addition to your bathroom for years to come. This manual will be your reference for installation, instructions for care of the shower panel, operation of the shower panel and for the benefits of using our Shower Panel.

Before using our Shower Panel, please read this document carefully and thoroughly. The instructions and safety information in this document are essential to the safe operation of your new unit. Additionally, not adhering to the conditions regarding maintenance and installation in this document may affect your new product's warranty.

Our luxury Shower Panel brings a spa experience into your life in the comfort of your personal bathroom. Adding the shower panel as a modification to your present shower will allow you to enjoy the pleasures of massaging body spray jets, an overhead rain shower and a shower wand. Furthermore, the shower panel will operate with your existing plumbing supply lines with standard line pressure and flow rates.

### <Instructions for Installation >

Carefully read and follow the instructions in the following guidelines. If you fail to follow these recommended instructions and techniques for installation, you risk affecting the warranty claims for your product and causing damage to the unit and the surrounding area.

#### IMPORTANT:

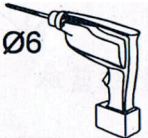
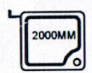

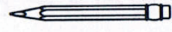

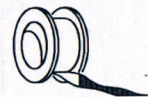
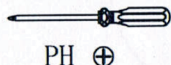
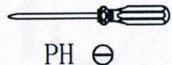
In order to install this shower panel, simple understanding of plumbing techniques will be necessary. Please contact your dealer or a professional plumber if you are unfamiliar with plumbing techniques or have questions.

While determining the installation location for your new unit, we recommend you take into account the guidelines below. All installations are unique and these guidelines are general.

1. This shower panel is designed for indoor use ONLY. It is not intended for outdoor use or other uses.
2. We have provided flexible supply hoses. It is recommended that you consider installing individual cut off valves for the cold and hot water supplies.

Prior to installation, please make sure your package is complete and your unit is not damaged. Look over all of the unit's components. Check for damaged and broken components and sections. Contact your dealer or the manufacturer if you find damaged sections.

### Tools needed

			
Electric drill	Tape	Adjustable wrench	Pencil
			
Rubber hammer	Sealing strip	Philips screwdriver	Flat screwdriver

### Plumbing Requirements.

- Flow rate: 2.5 gallons per minute (gpm)
- Water pressure: 60 to 80 psi for both cold and hot supply lines

You will have to speak with a plumber regarding the installation of a booster pump or enlarging your supply lines if your water supply is unable to meet the requirements above.

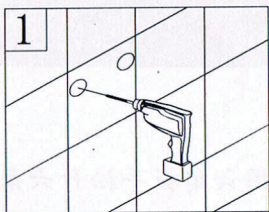
### <Mounting the Brackets of the Shower Panel >

While mounting the brackets of your new shower panel, the following will influence your decision on which height to mount the unit at.

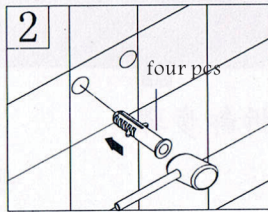
- It is recommended that the shower panel be mounted at a height that will make the unit accessible to people of varying heights. That way, various people in the home can enjoy the shower panel.
- A comparison between the height of the overhead rain shower to the body jets and the height of all of the people who will be using the shower panel.
- Whether or not the height you choose will allow the shower panel to completely cover up the connection points for the cold and hot water supplies. In order to determine your installation location of the shower panel, you will require the use of a tape measure and pencil (or some type of marking tool).

**IMPORTANT:** Check the condition of the wall and the electric wires before drilling!

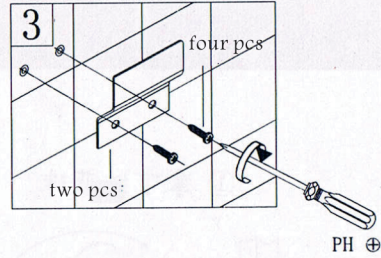
### STEPS:



Hole on the wall



Place the wall anchors into the mounting holes.



Put the screws through the holes of the brackets, and then tighten them with the screwdriver at the maximum as it can be.

### Steps for Mounting the Shower Panel

- Two mounting brackets are used in units with two single bar straps. (one will go on the top strap and one will go on the bottom strap.)
- Determine the distance between the top and bottom strap. Determine the distance between the most outside measurement from the bottom of the top strap to the bottom of the shower panel. Mark them on the mounting wall. The distance between two straps can determine the mounting locations of two mounting brackets.
- Hold one mounting bracket flat against the wall with the mounting holes over the mark indicating the bracket's location from the center line. The mounting holes must point towards the bottom of the shower.
- You will have to line up this mounting bracket so that the bend in the bracket is on the horizontal line. Meanwhile, make sure the mounting holes are still centered on the mark you made for the bracket's location
- Mark the two screwing holes location with the pencil.
- Drill each hole location with 5/16" diameter drill bit.  
TIP: Pilot drill with a smaller drill bit before stepping up to the final size if your wall surface is prone to chipping and cracking.
- Place the wall anchors into the mounting holes you just drilled.
- With a Phillips screwdriver, or a drill with a Phillips bit, attach the mounting brackets to the wall surface with the use of the provided screws.

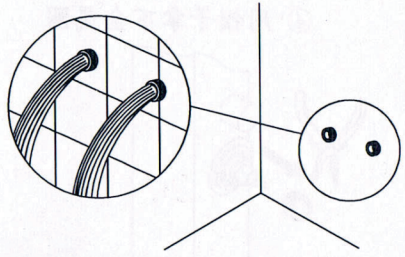
### <Connect Your Shower Panel to Your Water Supply>

After installing the mounting brackets for your shower panel, the final water connections will be made.

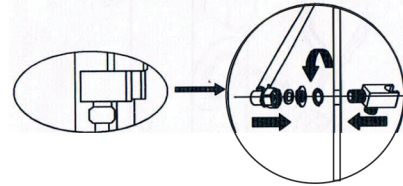
- You will find the input cold and hot water connections on the back of the thermostatic valve on the shower panel unit. The cold connection is labeled with a blue sticker and the hot connection is labeled with a red sticker.
- Connect each of the flexible hoses to the thermostatic valve. Then connect each hose to the corresponding cold and hot water supplies. Secure both hoses.

**IMPORTANT:** Use the rubber washer included in your purchase.

- Turn on each of the valves if you installed cut off valves on your supply line. Check for leaks in both the cold and hot water supply. If there are no leaks, you may move on to the next process in the installation.



The following picture is the installation constructions of the handheld shower wand.



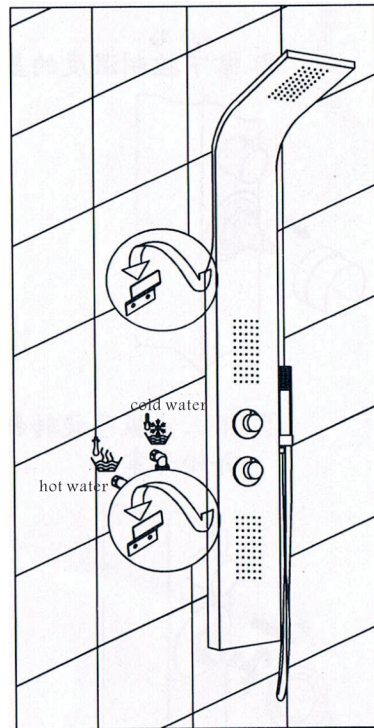
### IMPORTANT:

Before connecting the hoses to the water supply lines, please clean the hoses with water. Then connect the hoses to the water supply lines and check the leaks, if no leaks, you may move on to the next process.

### <Hanging your Ariel Shower Panel>

You can hang your shower panel on the mounting brackets you installed when you are done checking for leaks.

1. Put your shower panel on the wall surface with the mounting straps above the corresponding mounting brackets while making sure that the flexible supply lines are in the shower panel enclosure.
2. Slide the shower panel down. Stop when it rests on the mounting brackets you installed. The shower panel must be seated onto the mounting brackets by pulling down on the shower panel. You will have seated the unit on the mounting brackets properly after you feel a slight movement down ward and the shower panel stops moving.
3. Seal the shower panel with a caulk gun using a bathroom rated caulk or sealant. Run sealant where the unit contacts the wall surface, using a bead of caulk. Use excess caulk to fill in any cracks or spaces in the joint, and wipe away the excess caulk



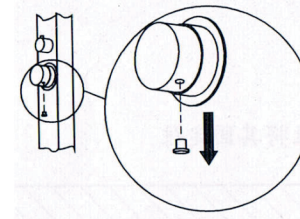
### IMPORTANT:

Abrasive cleaners should be never used on the shower panel unite, Mild, non-abrasive cleaners should be used to clean the shower panelunit!

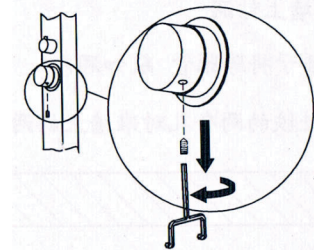
## The assembly and disassembly steps of thermostatic shower panel.

### Disassembly steps

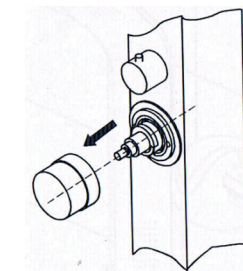
1. Take of the blue sticker.



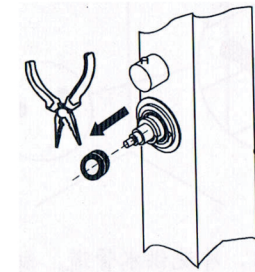
2. Loose the allen screw with the hexagon wrench.



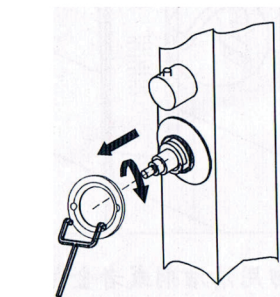
3. Take off the thermostatic valve cover.



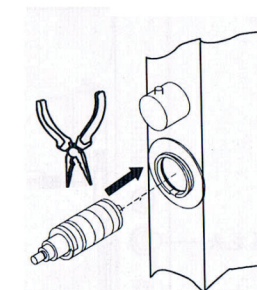
4. Take off the metal rim with the plier.



5. Use hexagon wrench loose the brass shifting ring and take it off.



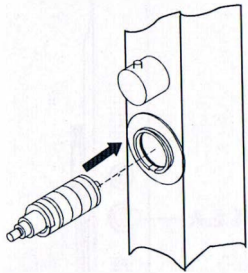
6. Take off the valve core and clean it. use soft brush clean the build-up of calcium, rust lime.



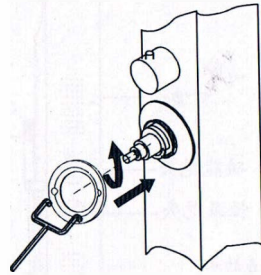
## The assembly and disassembly steps of thermostatic shower panel.

### Assembly steps

1. Put the valve core back into the valve.

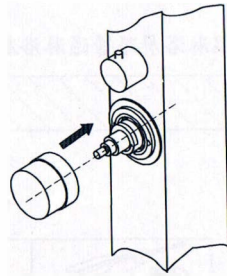
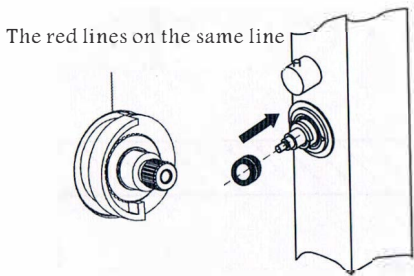


2. Put the brass rim onto the valve core.

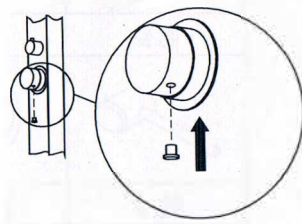
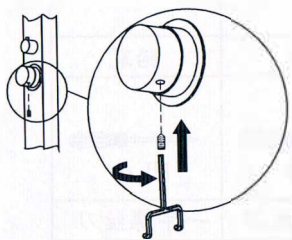


3. To put the metal ring back

4. Put the valve cover on.



5. Use the hexagon wrench tighten the allen screw. 6. Put the red/blue sticker on.



### <Thermostatic Faucet>

The thermostatic faucet sets the mixture between the cold and hot water in the unit. The unit will not change the water temperature beyond the temperature of the hot water heater in your home; the markings for temperature are only for reference.

The unit will operate at the same temperature unless you change the setting of the thermostatic faucet. Set the thermostatic faucet to the temperature you prefer.

Press the release button in order to operate the faucet and turn the faucet to your preferred temperature.

### <Showerhead, Body Jets, Shower wand>

Set the diverter valve to the showerhead, body jets or shower wand setting, the water will start. Designate the water temperature you want with the thermostatic valve. Turn the diverter valve "off" when you are done showering.

### <How to fix the problems that you will meet while using your shower panel>

There is no warm water or only hot water or cold water.

Make sure that both the hot water and cold water supply are connected to the right location on the thermostatic valve. The blue hose is for cold and the red hose is for hot. Disconnect the thermostatic valve and the water supply lines. Inspect the check valve for obstructions or a stuck valve. Contact us or your dealer if the problem continues.

There is lack of water pressure to the showerhead, shower wand and body jets.

Make sure your line pressure is at 60 to 80 PSI. If it is not, you may need to speak to a professional plumber to install a booster pump.

Leaks:

Once you find any leaks, the connection fittings and hose clamp may be loose. Tighten them.

Contact us or your dealer if the leak continues.

### Care and maintenance of your shower panel

Follow these instructions to ensure your luxury shower unit lasts long time and to keep the warranty intact. It is very important that you follow our proper maintenance instructions, so that your shower life will last longer. Any damages resulted by the improper care and maintenance will not be covered by the product warranty.

The showerhead and body jets may need to be cleaned occasionally due to the build-up of rust, lime or calcium, depending upon the chemistry of your water.

Remove the showerhead and body jets before cleaning. Use the warm water and mild vinegar to soak the piece before cleaning it. Or you may need to use CLR or another hard water cleaner.