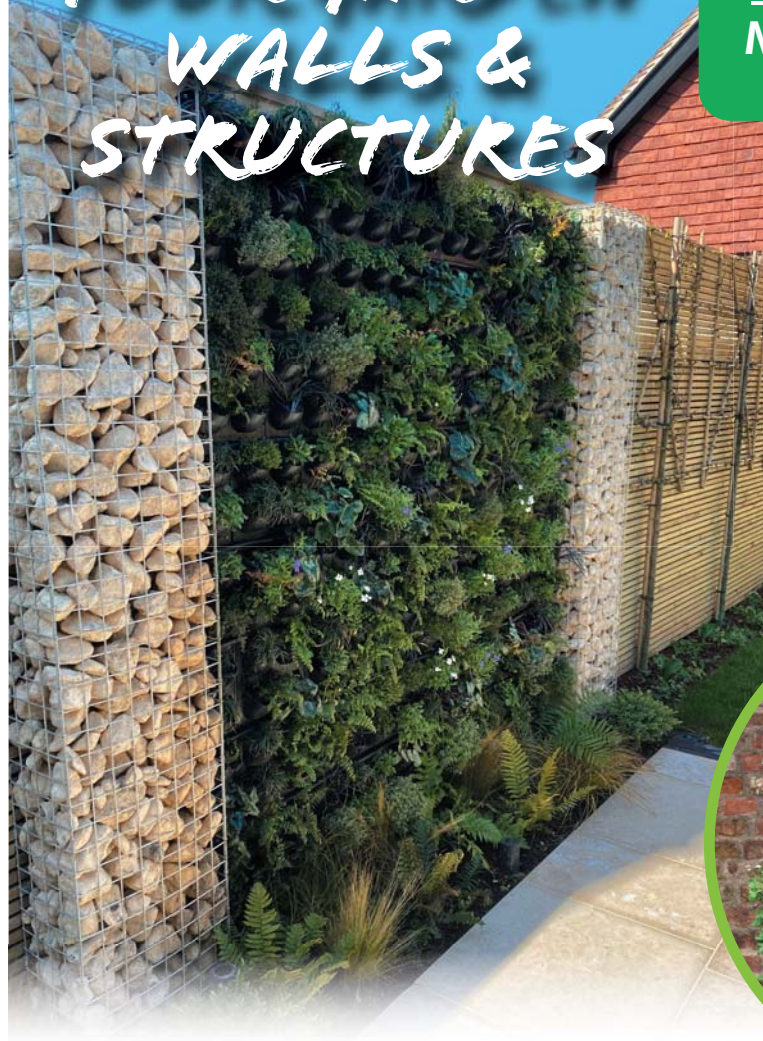


# TRANSFORM YOUR GARDEN WALLS & STRUCTURES

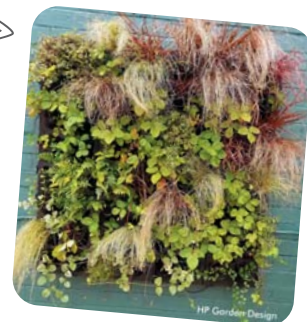
# G-WALL®

## MODULAR LIVING WALL SYSTEM

Every garden, no matter how small, has some vertical space, be it a wall or other suitable structure, that is perfect for populating with plants. The Platipus G-WALL® is an easy to install modular system that will allow even the most inexperienced gardener to transform bare boundaries or spaces into vibrant colourful living walls.



- Quick to assemble and install using basic tools
- Can be easily expanded (vertically & horizontally)
- Simple to water with 'drip through' irrigation slots
- Ideal for flowers, ferns, sedums, evergreens, herbs, grasses & trailing plants



BUY ONLINE **PLATIPUS**  
DIRECT  
[www.platipusdirect.co.uk](http://www.platipusdirect.co.uk)

NEED HELP? FREEPHONE  
**0808 169 5060**



# GUIDELINES & SUGGESTIONS

## POSITION

When deciding on where to position your G-WALL® you will need to give some consideration on the location to the sun. This may also have an impact on your choice of plants:

- **North** facing will be shady
- **South** facing will be sunny
- **East** or **West** facing will experience both



## PLANT SELECTION\*

To ensure your G-WALL® remains full, vibrant and colourful all year round you may want to consider using a variety of plants and specimens:

- **Annuals:** Normally last a year but they can give you great colour
- **Edibles:** Herbs, vegetables and fruits. These are likely to be seasonal
- **Succulents:** Require less water / maintenance. Can last for many years
- **Tropical:** Ideal for your internal planting and can provide big green leaves that are full of life
- **Perennials:** These can last for years if properly maintained

## SOILS\*

Once you have made your plant selection you will need to choose a suitable soil for your plants:

- **Annuals & Edibles:** A good quality potting mix with organic matter to stimulate growth
- **Succulents:** Do not like wet feet, the potting mix must have good drainage
- **Tropical & Perennials:** A good quality potting mix should be fine with bark, perlite and pumice



## MAINTENANCE\*

It is good practice to inspect your G-WALL® regularly to check the condition of your plants and soil:

- Consider replacing some plants and specimens every quarter to ensure your G-WALL® remains healthy and vibrant
- Replace any underperforming varieties, if necessary
- Consider using a granular or liquid fertiliser, if necessary
- During winter it is best to water during warmer moments, to avoid frost and icing



**\*We would always recommend speaking to your local Garden Centre or Nursery if you need assistance with plant selection, soils and maintenance.**



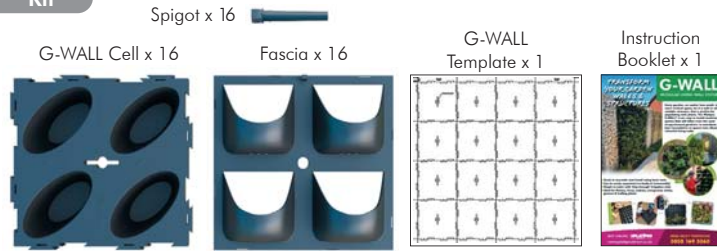
# INSTALLATION GUIDE

# G-WALL Single Panel (1m<sup>2</sup>)

Please read instructions fully before beginning installation



### Kit



### Tools Required



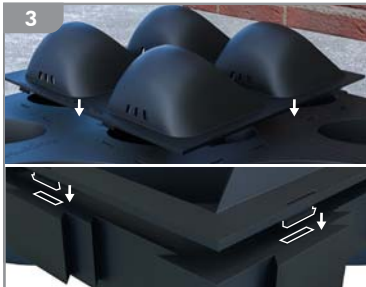
WEAR SUITABLE SAFETY EQUIPMENT



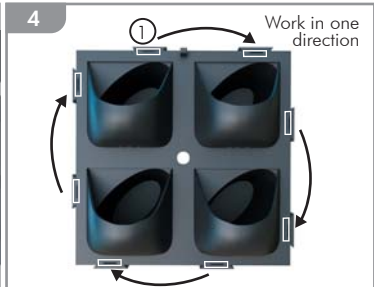
1 Connect two G-WALL Cells together using a rubber mallet.



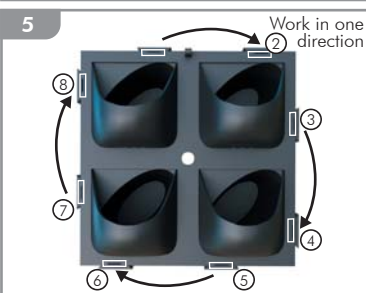
2 Repeat step 1 to create the shape (1m<sup>2</sup>) for your living wall. Make sure all cells are in the same orientation.



3 Line up the clips on the back of the Fascia with the corresponding slots in the G-WALL Cell. Make sure you have the opening of the Fascia cups in the correct orientation.



4 Starting with the top left corner, by hand, push the Fascia clip into its slot. **Do not use a mallet or hammer.**



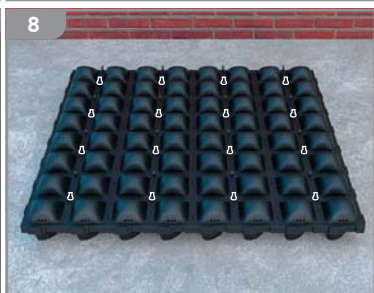
5 Seat each clip (may give loud 'snap' as seated). **If a clip feels too stiff to push in, move on to the next one & continue to work around the cell until all of the clips are secured.**



6 Repeat steps 3, 4 & 5 for each G-WALL Cell until all Fascias have been fitted.



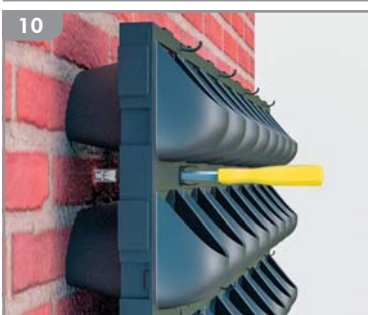
7 Insert the fixing spigot into the hole in the centre of the Fascia and G-WALL Cell, **ensuring** that it clicks into place.



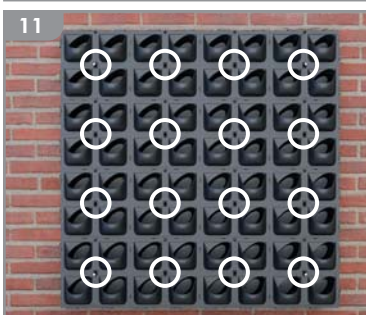
8 Repeat step 7 for each G-WALL Cell & Fascia. Your G-WALL is now assembled.



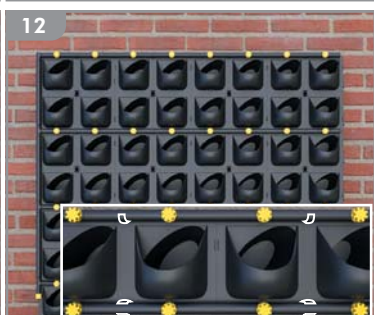
9 Flatten G-WALL Template & position on your wall or suitable structure. **Wall only:** Drill a fixing hole at the centre of each cell (16), then remove the Template and install rawlplugs.



10 Position your assembled G-WALL and using a suitable screw, secure the first cell through the spigot to the corresponding fixing hole.



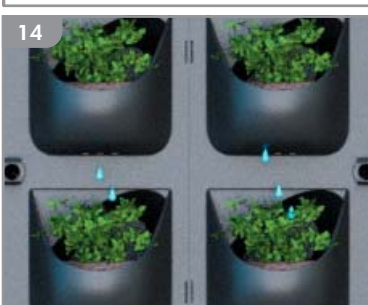
11 Repeat step 10 to fix the G-WALL securely. We recommend that you use all 16 of the fixing spigots per metre square.



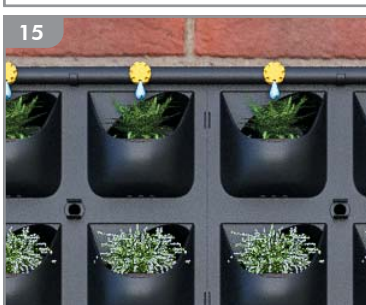
12 **Optional:** If preferred, fix a permanent 13-16mm irrigation system in place using the clips, according to manufacturers instructions. Use additional clips on spigots, if required.



13 Plant up each pocket of the G-WALL with suitable plants for your location, that live in 9-10cm pots. Add additional planting medium as needed.



14 Water plants as required. Pocket 'drip through' irrigation slots will help supply water to all plants.



15 **Optional:** If you are using an irrigation system, adjust to ensure sufficient water passes through the pocket 'drip through' irrigation slots.

SEE MULTI-PANEL INSTALLATION

**TESTIMONIAL:** "G-WALL is the perfect backdrop for a range of architectural and visually striking plants to give vertical interest. It's easy to assemble, install and maintain, allowing plants to develop into a stunning, ever changing, dramatic display." - Christine Mulinder, Garden Designer.



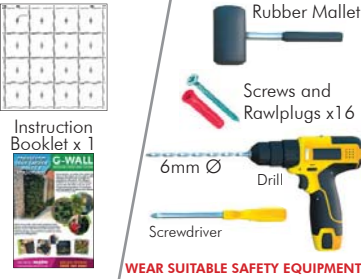
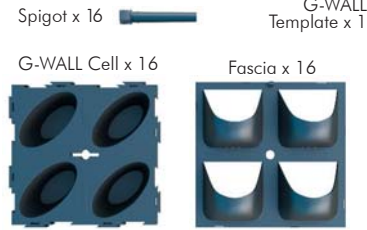
# INSTALLATION GUIDE

# G-WALL Multi-Panel (More than 1m<sup>2</sup>)

Please read instructions fully before beginning installation



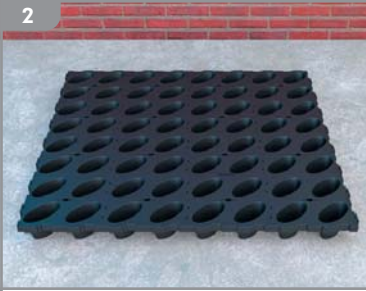
## Kit Quantities per 1m<sup>2</sup>



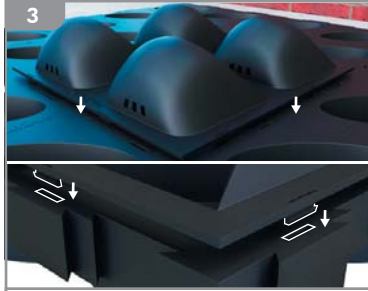
WEAR SUITABLE SAFETY EQUIPMENT



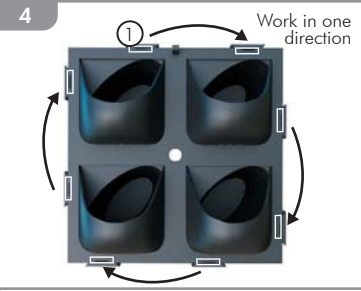
Connect two G-WALL Cells together using a rubber mallet.



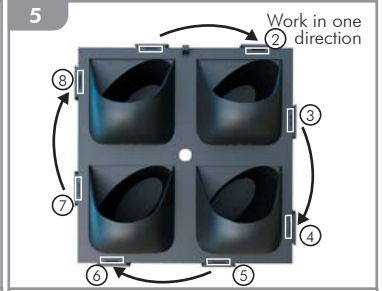
Repeat step 1 to create the shape (1m<sup>2</sup>) for your living wall. Make sure all cells are in the same orientation.



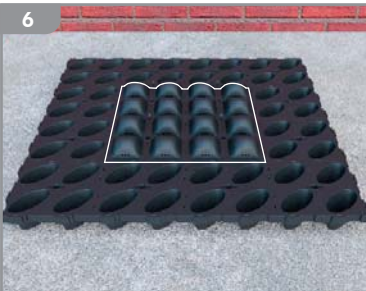
Line up the clips on the back of a Fascia with the corresponding slots in one of the central G-WALL Cells. Make sure you have the opening of the Fascia cups in the correct orientation.



Starting with the top left corner, by hand, push the Fascia clip into its slot. **Do not use a mallet or hammer.**



Seat each clip (may give loud 'snap' as seated). **If a clip feels too stiff to push in, move on to the next one & continue to work around the cell until all of the clips are secured.**



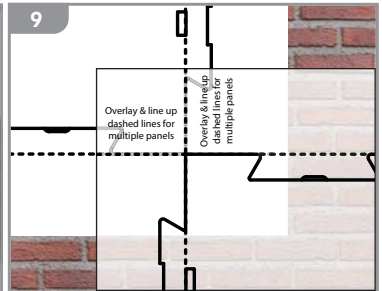
Repeat steps 3, 4 & 5 for the remaining 3 central G-WALL Cells to make a central square.



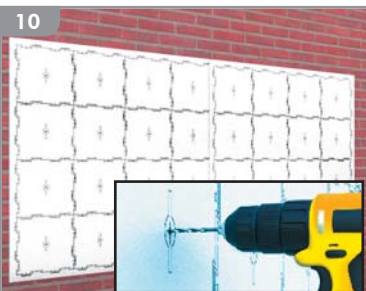
Insert the fixing spigot into the hole in the centre of the Fascia and G-WALL Cell, **ensuring** that it clicks into place.



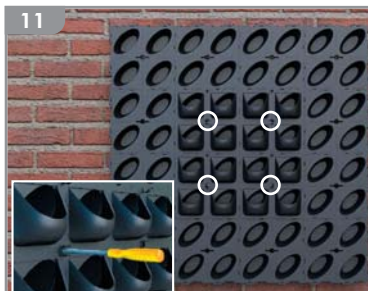
Repeat step 7 for the remaining 3 central G-WALL Cells.



Flatten G-WALL Templates & position on your wall or suitable structure. **Important:** Make sure the dashed lines & fixing holes are exactly aligned to create desired shape, then secure.



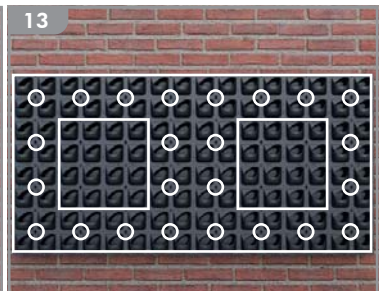
**Wall only:** Drill a fixing hole at the centre of each and every cell to suit your desired shape and area, then remove the Templates and install rawlplugs.



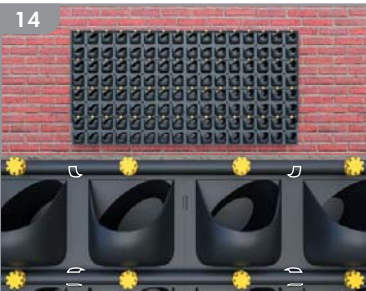
Position your G-WALL and using suitable screws, secure the four central cells through their spigots to the corresponding fixing holes.



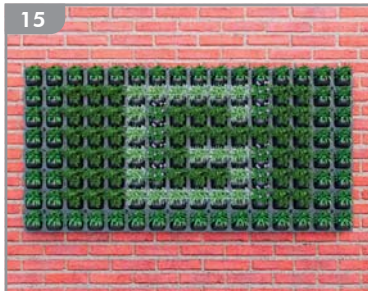
Assemble next panel as per steps 1-8, connect to existing fixed panel and secure as per step 11. Repeat the process until the desired shape and area is covered.



Install all of the remaining Fascias (steps 3-5) and spigots (steps 7-8) to complete the assembly of your G-WALL. Secure all remaining fixing spigots to the wall (step 11).



**Optional:** If preferred, fix a permanent 13-16mm irrigation system in place using the clips, according to manufacturers instructions. Use additional clips on spigots, if required.



Plant up each pocket of the G-WALL with suitable plants for your location, that live in 9-10cm pots. Add additional planting medium as needed.



Water plants as required. Pocket 'drip through' irrigation slots will help supply water to all plants. **Optional:** If you are using an irrigation system, adjust to ensure sufficient water passes through the pocket 'drip through' irrigation slots.

**SEE SINGLE PANEL INSTALLATION**

**TESTIMONIAL:** "The G-WALL system was very easy to put together and install without the need for specialist equipment. The planting holes are generous and the irrigation hooks make it simple to add essential irrigation. The modules are ideal for a variety of configurations to suit all size of design. I would definitely use the G-WALL system again." - Katharine Goddard, Garden Designer.