

Please read instructions fully before beginning installation

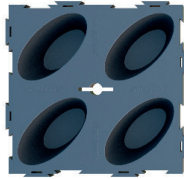


Kit

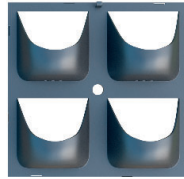
Spigot x 16



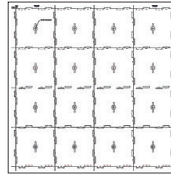
G-WALL Cell x 16



Fascia x 16



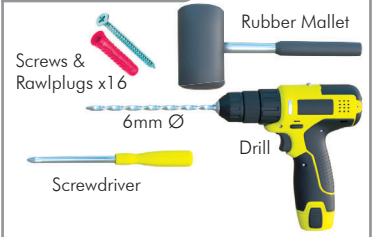
G-WALL Template x 1



Instruction Booklet x 1



Tools Required



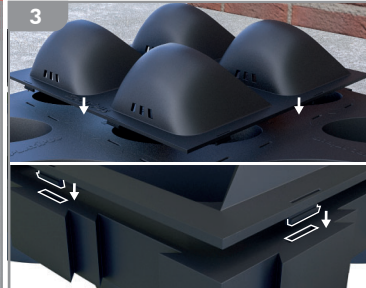
WEAR SUITABLE SAFETY EQUIPMENT



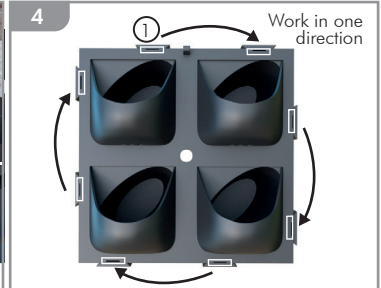
1 Connect two G-WALL Cells together using a rubber mallet.



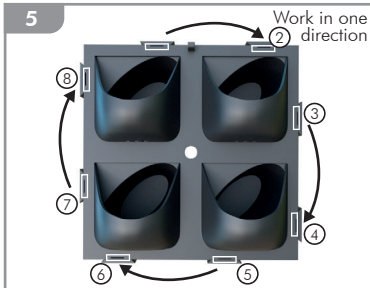
2 Repeat step 1 to create the shape (1m²) for your living wall. Make sure all cells are in the same orientation.



3 Line up the clips on the back of the Fascia with the corresponding slots in the G-WALL Cell. Make sure you have the opening of the Fascia cups in the correct orientation.



4 Starting with the top left corner, by hand, push the Fascia clip into its slot. **Do not use a mallet or hammer.**



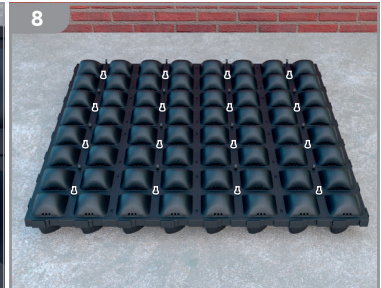
5 Seat each clip (may give loud 'snap' as seated). **If a clip feels too stiff to push in, move on to the next one & continue to work around the cell until all of the clips are secured.**



6 Repeat steps 3, 4 & 5 for each G-WALL Cell until all Fascias have been fitted.



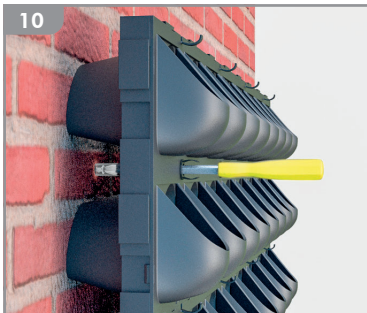
7 Insert the fixing spigot into the hole in the centre of the Fascia and G-WALL Cell, **ensuring** that it clicks into place.



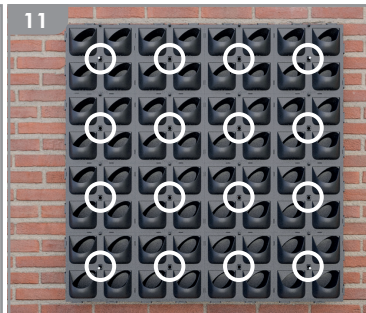
8 Repeat step 7 for each G-WALL Cell & Fascia. Your G-WALL is now assembled.



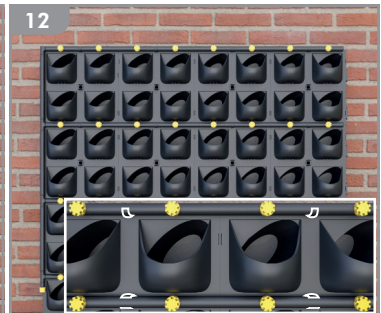
9 Flatten G-WALL Template & position on your wall or suitable structure. **Wall only:** Drill a fixing hole at the centre of each cell (16), then remove the Template and install rawlplugs.



10 Position your assembled G-WALL and using a suitable screw, secure the first cell through the spigot to the corresponding fixing hole.



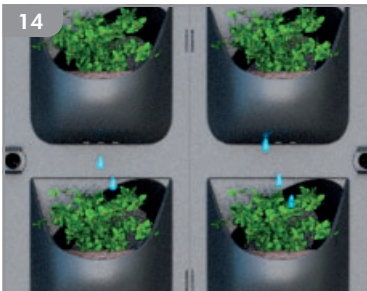
11 Repeat step 10 to fix the G-WALL securely. We recommend that you use all 16 of the fixing spigots per metre square.



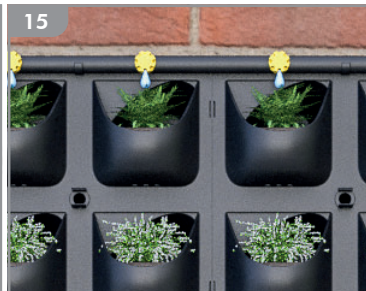
12 **Optional:** If preferred, fix a permanent 13-16mm irrigation system in place using the clips, according to manufacturers instructions. Use additional clips on spigots, if required.



13 Plant up each pocket of the G-WALL with suitable plants for your location, that live in 9-10cm pots. Add additional planting medium as needed.



14 Water plants as required. Pocket 'drip through' irrigation slots will help supply water to all plants.



15 **Optional:** If you are using an irrigation system, adjust to ensure sufficient water passes through the pocket 'drip through' irrigation slots.

SEE MULTI-PANEL INSTALLATION

