

Please read instructions fully before beginning installation



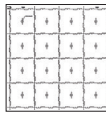
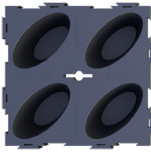
Kit Quantities per 1m²

Spigot x 16

G-WALL Template x 1

G-WALL Cell x 16

Fascia x 16



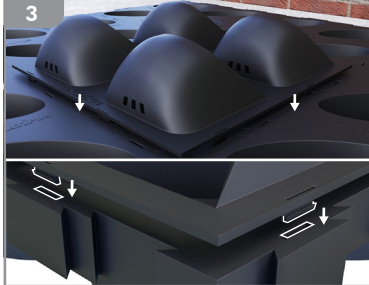
WEAR SUITABLE SAFETY EQUIPMENT



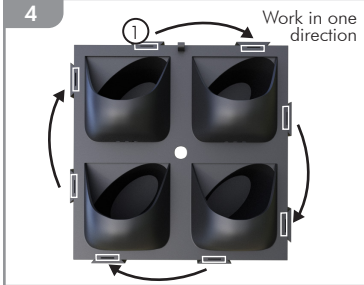
1 Connect two G-WALL Cells together using a rubber mallet.



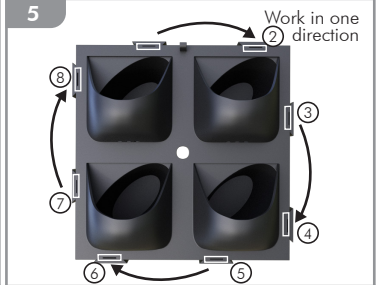
2 Repeat step 1 to create the shape (1m²) for your living wall. Make sure all cells are in the same orientation.



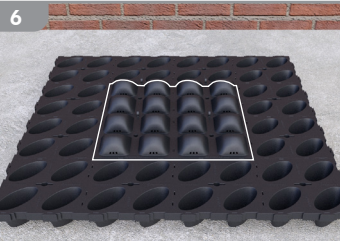
3 Line up the clips on the back of a Fascia with the corresponding slots in one of the central G-WALL Cells. Make sure you have the opening of the Fascia cups in the correct orientation.



4 Starting with the top left corner, by hand, push the Fascia clip into its slot. **Do not use a mallet or hammer.**



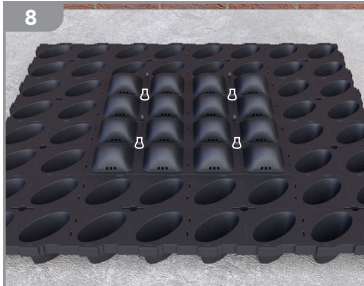
5 Seat each clip (may give loud 'snap' as seated). **If a clip feels too stiff to push in, move on to the next one & continue to work around the cell until all of the clips are secured.**



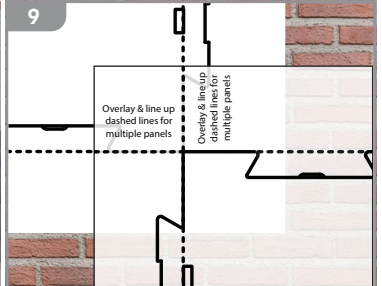
6 Repeat steps 3, 4 & 5 for the remaining 3 central G-WALL Cells to make a central square.



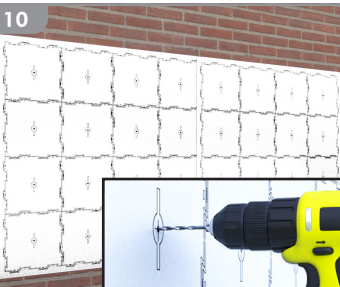
7 Insert the fixing spigot into the hole in the centre of the Fascia and G-WALL Cell, **ensuring** that it clicks into place.



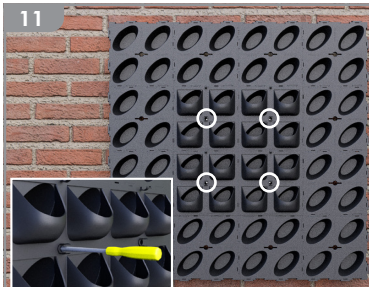
8 Repeat step 7 for the remaining 3 central G-WALL Cells.



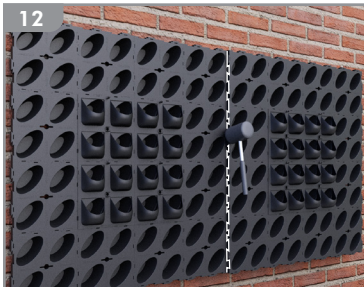
9 Flatten G-WALL Templates & position on your wall or suitable structure. **Important:** Make sure the dashed lines & fixing holes are exactly aligned to create desired shape, then secure.



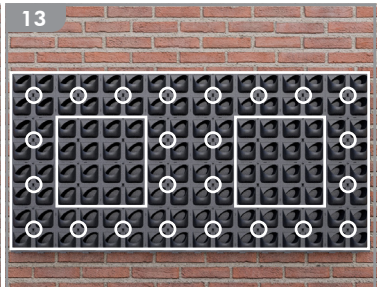
10 **Wall only:** Drill a fixing hole at the centre of each and every cell to suit your desired shape and area, then remove the Templates and install rawlplugs.



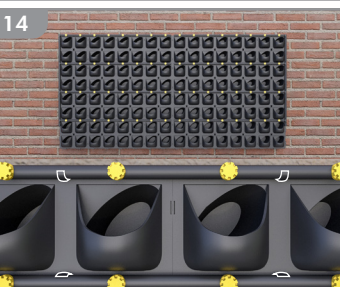
11 Position your G-WALL and using suitable screws, secure the four central cells through their spigots to the corresponding fixing holes.



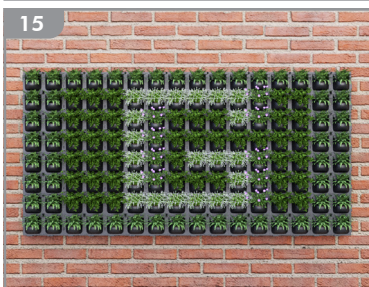
12 Assemble next panel as per steps 1-8, connect to existing fixed panel and secure as per step 11. Repeat the process until the desired shape and area is covered.



13 Install all of the remaining Fascias (steps 3-5) and spigots (steps 7-8) to complete the assembly of your G-WALL. Secure all remaining fixing spigots to the wall (step 11).



14 **Optional:** If preferred, fix a permanent 13-16mm irrigation system in place using the clips, according to manufacturers instructions. Use additional clips on spigots, if required.



15 Plant up each pocket of the G-WALL with suitable plants for your location, that live in 9-10cm pots. Add additional planting medium as needed.



16 Water plants as required. Pocket 'drip through' irrigation slots will help supply water to all plants. **Optional:** If you are using an irrigation system, adjust to ensure sufficient water passes through the pocket 'drip through' irrigation slots.

SEE SINGLE PANEL INSTALLATION