



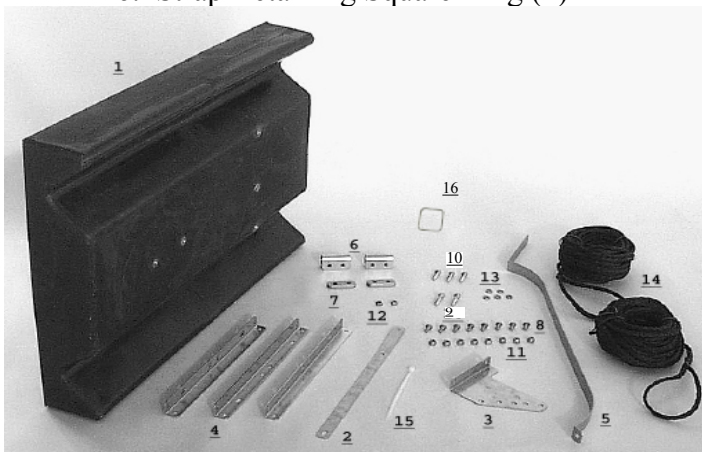
# Horizontal Float

## Assembly & Installation Instructions

**Warning:** Keep Kasco motor unit disconnected from power source through the entire assembly procedure.

### Parts Included

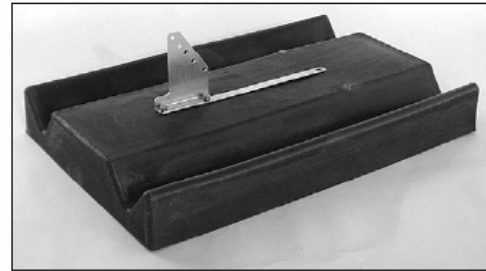
- A. Circulator (Unit with cord or stub cord) (1)
- B. Float in separate box (1)
  - 1. Float (1)
  - 2. Base Strap (1)
  - 3. Adjustment Bracket (1)
  - 4. Angle Bracket (3)
  - 5. Draw Band (1)
  - 6. U-Bracket (2)
  - 7. Spacer Bracket (2)
  - 8. 1/4" x 1/2" Stainless Steel Bolt (8)
  - 9. 1/4" x 1" Stainless Steel Bolt (2)
  - 10. 1/4" x 1-3/8" Stainless Steel Bolt (3)
  - 11. 1/4" Stainless Steel Lock Nut (8)
  - 12. 1/4" Stainless Steel Hex Nut (2)
  - 13. 1/4" Stainless Steel Lock Washer (5)
  - 14. 50' Black Nylon Ropes (2)
  - 15. Nylon Tie (1)
  - 16. Strap Retaining Square Ring (1)



### Circulator Assembly

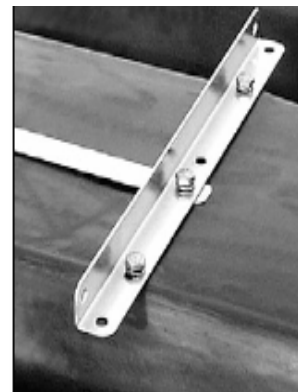
1. Remove all contents from package and place on a clean, flat surface. Inspect the shipment for any damages. Make sure you have all the parts needed. Notify your Kasco Marine representative if any damage or shortages are found.

2. Position the Float (Part B1) upside down (lengthwise channels facing up) and place the Base Strap (Part B2) so the three holes in the Base Strap align with the three threaded holes that comprise the lengthwise midline of the Float.



3. Position the Adjustment Bracket (Part B3) over the two holes at the back end of the Float and Base Strap. Loosely secure the Adjustment Bracket to the Float using two 1/4" x 1/2" (Part B8) Stainless Steel Bolts and two Stainless Steel Lock Washers (Part B13). (See photo above for orientation.)

4. Place one of the three Angle Brackets (Part B4) perpendicular to the Base Strap at the front end of the Base Strap. One of the two center holes of the Angle Bracket should be positioned over the hole in the Base Strap and the threaded hole in the Float. Secure the Angle Bracket to the Float using three 1/4" x 1/2" Stainless Steel Bolts and three Stainless Steel Lock Washers. Tighten all hardware at this time with the 7/16" (11mm) socket and wrench.



### Circulator Tools & Supplies Needed

- 1. Anchors or stakes for installing unit (2)
- 2. 12" pieces of 1" galvanized pipe for weighting ropes (optional) (2)
- 3. 7/16" Wrench (1)
- 4. 7/16" Socket & Ratchet (1)
- 5. Felt-tip marker (1)

5. With a felt-tip marker, draw three to four marks around the circumference of the motor housing at the appropriate measurement from the back (or bottom) of the motor housing given:

2400: 3/4" (1.9cm)

3400: 3-3/8" (8.57cm)

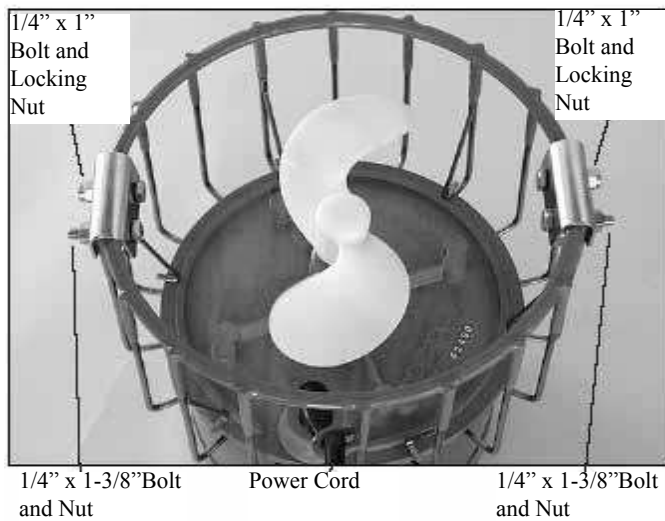
4400: 3-3/8" (14 cm)



8. Attach an Angle Bracket to each of the longer (1-1/4") bolts on the U-Brackets (See photo for orientation) with a 1/4" Lock Nut.



6. Place the two U-Brackets (Part B6) directly across from each other (180°) over the top ring of the motor cage. The cord clamp on the cage should be 90° from each of the U-Brackets



9. Wrap the Draw Band (Part B5) around the motor housing and position so that the back of the Draw Band touches the marks drawn in Step Five. Use the retaining square ring to hold the draw strap together. Note: If you have difficulty wrapping the strap around the can, insert the retaining ring around the strap before it is around the can and then slide it onto the can and into position. Orient the arm of the Draw Band so it aligns with the cord clamp on the cage of the motor housing and is parallel to the Angle Brackets attached in Step Eight. Secure using a 1/4" x 1 3/8" Stainless Steel Bolt and a 1/4" Lock Nut. You can remove or leave on the retaining ring once it is secured.



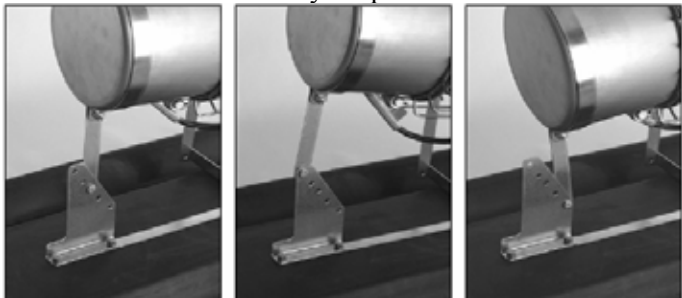
7. Insert the Spacer Bracket (Part B7) under the U-Bracket and inside the cage. Secure this assembly using one 1/4" x 1" Bolt (Part B9) and a 1/4" Lock Nut (Part B11), and one 1/4" x 1-3/8" Bolt (Part B10) and a 1/4" Hex Nut (Part B12). The longer bolt should be on the side of the U-Bracket that is closer to the cord clamp. Tighten the hardware using the 7/16" (11mm) wrench and socket & wrench until the U-Bracket clamps firmly around the cage (U-Bracket should pull together slightly). Repeat with the second U-Bracket.

10. Attach the Angle Bracket on the motor to the Angle Bracket on the Float using two 1/4" x 1/2" Bolts and two 1/4" Lock Nuts (one set for each Bracket). See photos for orientation. Also, the cord clamp on the cage should be oriented toward the Float.

Angle towards back



11. Attach the Draw Band on the motor to the Adjustment Bracket on the Float using a 1/4" x 1/2" Bolt and a 1/4" Lock Nut. Select one of the five possible positions to mount the Draw Band for your preferred direction of flow.



Horizontal

Angled Up

Angled Down

12. Attach the Ropes to the front (on the cage) and back (around the Draw Band) of the motor. At this time, use the Nylon Tie provided to connect the power cord and front Rope to prevent the cord from tangling in the prop. Also, if the power cord has a Quick Disconnect and Additional Strain Relief install the Quick Disconnect and Strain Relief per instructions.



13. Float the circulator in the water and position where desired. Tie the front Rope to a stake on the shore or weight. If a weight is used sink weight in front of unit so rope is taught. (Circulators create great force, make sure weight is enough to prevent movement.) Tie back Rope to a stake on opposite shore or weight. Sink weight behind the unit so rope is taught. At this time take up any slack in the line.

#### STEP FOURTEEN

You can now connect the Circulator into the GFI protected power source at the ponds edge.



Kasco Marine Inc.  
800 Deere Road  
Prescott, WI 54021

[www.de-icer.com](http://www.de-icer.com)  
[www.kascomarine.com](http://www.kascomarine.com)

[sales@kascomarine.com](mailto:sales@kascomarine.com)