



KM-60C & KM-120C Rebuild Instructions

(Refer to exploded view for part descriptions)

- 1) Remove all external brass fittings and air filter from compressor head. Take a picture or use a permanent marker to mark the head for proper reassembly.
- 2) Use a Phillips head screwdriver to remove cooling fan cover, exposing piston and cooling fan.
- 3) Use a 4mm Metric hex key to remove the 4 head bolts, and separate the head from main assembly. This head will separate into 3 pieces; The Head, Valve Plate, and Cylinder. Throw the old Cylinder away.
- 4) Once the valve plate is separated from the head use a small pointed tool to remove the old cylinder and valve plate o rings.
- 5) Use the Phillips head screwdriver to remove old Flapper Valves. The keeper strip and screw from each side are reused.



-Upper Keeper Strip

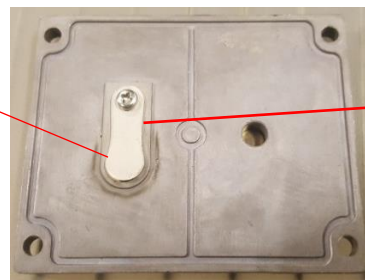


- Lower Keeper Strip

- 6) Install replacement flapper valves and tighten down so the valve and keeper strip line up.

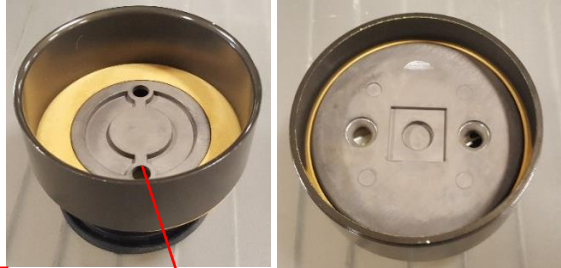


Note
Alignment!



Make sure keeper
strip curves away
from valve plate

- 7) Use the Phillips head screwdriver to remove the piston cup retaining plate from the piston head. Throw old piston cup away.
- 8) Use cup seal retaining plate and new cylinder to install replacement piston cup into cylinder. Making sure cup seal is straight and even in the cylinder. See pictures for proper orientation. Flip sheet for illustrations.

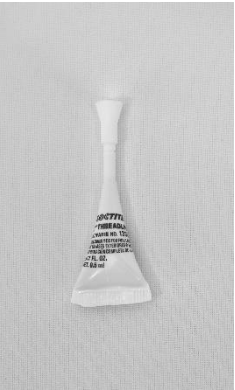
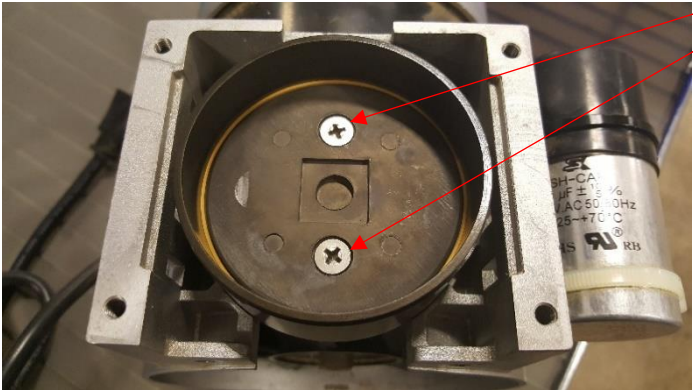


Note: Inverted cup seal and retaining plate

Tip: Place cup seal and retaining plate on air filter element to make cylinder install easier. Filter element is removed from filter assembly.

Push replacement cylinder onto inverted cup

9) Reinstall retaining plate and cylinder on compressor assembly. Apply a small amount of provided threadlocker to threads of retainer screws. Tighten retainer screws to 35 IN. LBS. (See fig. below)



Threadlocker

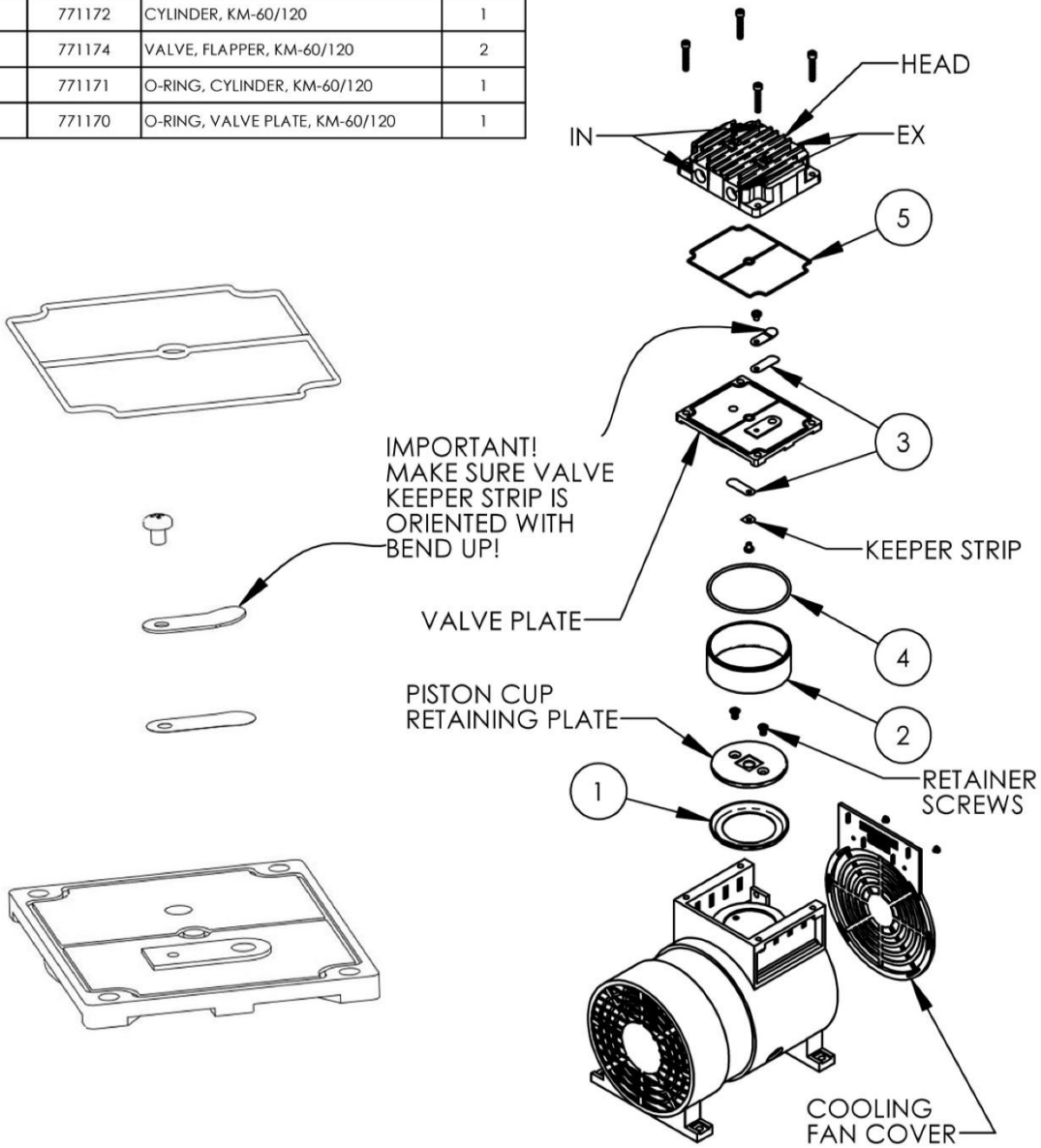
10) Install replacement cylinder o ring on valve plate and place valve plate onto top of reinstalled cylinder. Verify direction of air flow for proper final head placement.

11) Place valve plate o ring in original position and install compressor head. Tighten bolts down to 50 IN. LBS.

12) Install black cooling fan cover and fittings removed in step 1.

13) Test run unit for 1 minute to verify correct assembly. Make sure there is no excessive vibrations or noises. Replace air filter element if needed.

ITEM NO.	PART NO.	DESCRIPTION	QTY.
1	771173	PISTON CUP, KM-60/120	1
2	771172	CYLINDER, KM-60/120	1
3	771174	VALVE, FLAPPER, KM-60/120	2
4	771171	O-RING, CYLINDER, KM-60/120	1
5	771170	O-RING, VALVE PLATE, KM-60/120	1

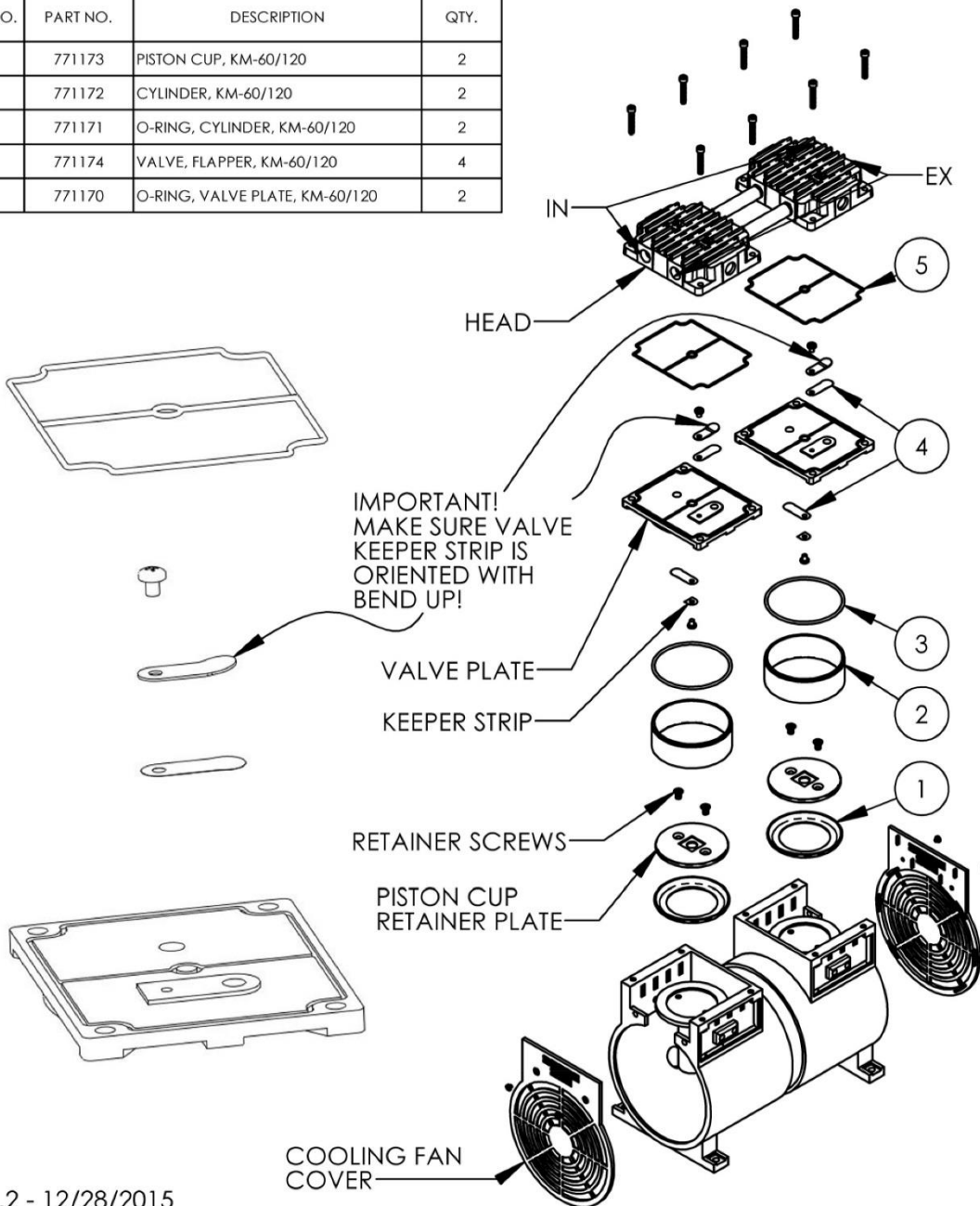


REV.2 - 12/28/2015

DO NOT SCALE DRAWING C.A.D. GENERATED DRAWING THIS DOCUMENT HAS BEEN ISSUED FOR ENGINEERING INFORMATIONAL PURPOSES ONLY. ANY REVISIONS TO THE CONTENT OF THIS DOCUMENT MUST BE INCORPORATED INTO THE ORIGINAL CAD FILE. THIRD ANGLE PROJECTION 	UNLESS OTHERWISE SPECIFIED DIMENSIONS ARE IN INCHES. DIMENSIONS IN [] ARE MILLIMETERS. TOLERANCES ON: .X ± .02 [.508] .XX ± .010 [.254] .XXX ± .005 [.127] ANGULAR ± 0.5° THIS DRAWING CONTAINS PROPRIETARY INFORMATION AND SHALL NOT BE USED, REPRODUCED OR DISTRIBUTED WITHOUT THE PRIOR WRITTEN CONSENT OF KASCO MARINE, INCORPORATED	MATERIAL:	 800 DEERE ROAD PRESCOTT, WI 54021-1241
		FINISH:	
		TITLE: COMPRESSOR REBUILD KIT TEICH-AIRE: KM-60(H)C	

INSTRUCTION #: 771185

ITEM NO.	PART NO.	DESCRIPTION	QTY.
1	771173	PISTON CUP, KM-60/120	2
2	771172	CYLINDER, KM-60/120	2
3	771171	O-RING, CYLINDER, KM-60/120	2
4	771174	VALVE, FLAPPER, KM-60/120	4
5	771170	O-RING, VALVE PLATE, KM-60/120	2



REV.2 - 12/28/2015

<p>DO NOT SCALE DRAWING C.A.D. GENERATED DRAWING</p> <p>THIS DOCUMENT HAS BEEN ISSUED FOR ENGINEERING INFORMATIONAL PURPOSES ONLY. ANY REVISIONS TO THE CONTENT OF THIS DOCUMENT MUST BE INCORPORATED INTO THE ORIGINAL CAD FILE.</p> <p>THIRD ANGLE PROJECTION</p>	<p>UNLESS OTHERWISE SPECIFIED DIMENSIONS ARE IN INCHES. DIMENSIONS IN [] ARE MILLIMETERS. TOLERANCES ON: .X ± .02 [.508] .XX ± .010 [.254] .XXX ± .005 [.127] ANGULAR ± 0.5°</p> <p>THIS DRAWING CONTAINS PROPRIETARY INFORMATION AND SHALL NOT BE USED, REPRODUCED OR DISTRIBUTED WITHOUT THE PRIOR WRITTEN CONSENT OF KASCO MARINE, INCORPORATED</p>	MATERIAL:	<p>800 DEERE ROAD PRESCOTT, WI 54021-1241</p>
		FINISH:	
TITLE:		<p>COMPRESSOR REBUILD KIT TEICH-AIRE: KM-120(H)C</p>	

INSTRUCTION #: 771185