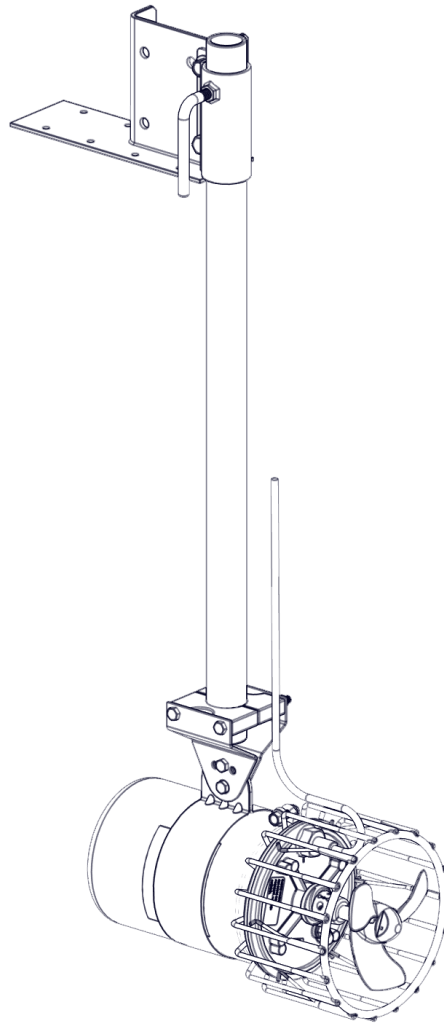




# Assembly Manual

Industrial Mount

Kit # 243484



**Kasco Marine, Inc.**

800 Deere Rd.

Prescott, WI 54021

PH (715) 262-4488

[www.kascomarine.com](http://www.kascomarine.com)

# Table of Contents

<b>Suggested Tools and Supplies Needed</b>	<b>pg 2</b>
<b>Parts Included</b>	<b>pg 3</b>
<b>Mounting Options</b>	<b>pg 4</b>
<b>Mount Assembly</b>	<b>pg 5 - 8</b>
<b>Adjustments and Storage</b>	<b>pg 9</b>
<b>Replacement Parts</b>	<b>pg 10</b>

## **Suggested Tools and Supplies Needed:**

- 1-1/2" (schedule 40 minimum) galvanized or stainless steel (1.90" outer diameter) pipe. Max 10' long. NOT INCLUDED.
- (8) 5/16" lag screws or bolts for mounting base (optional U-Bolt Kit available: P/N 997108K)
- 3/4" wrench
- 3/4" socket wrench
- 9/16" socket wrench
- 9/16" wrench

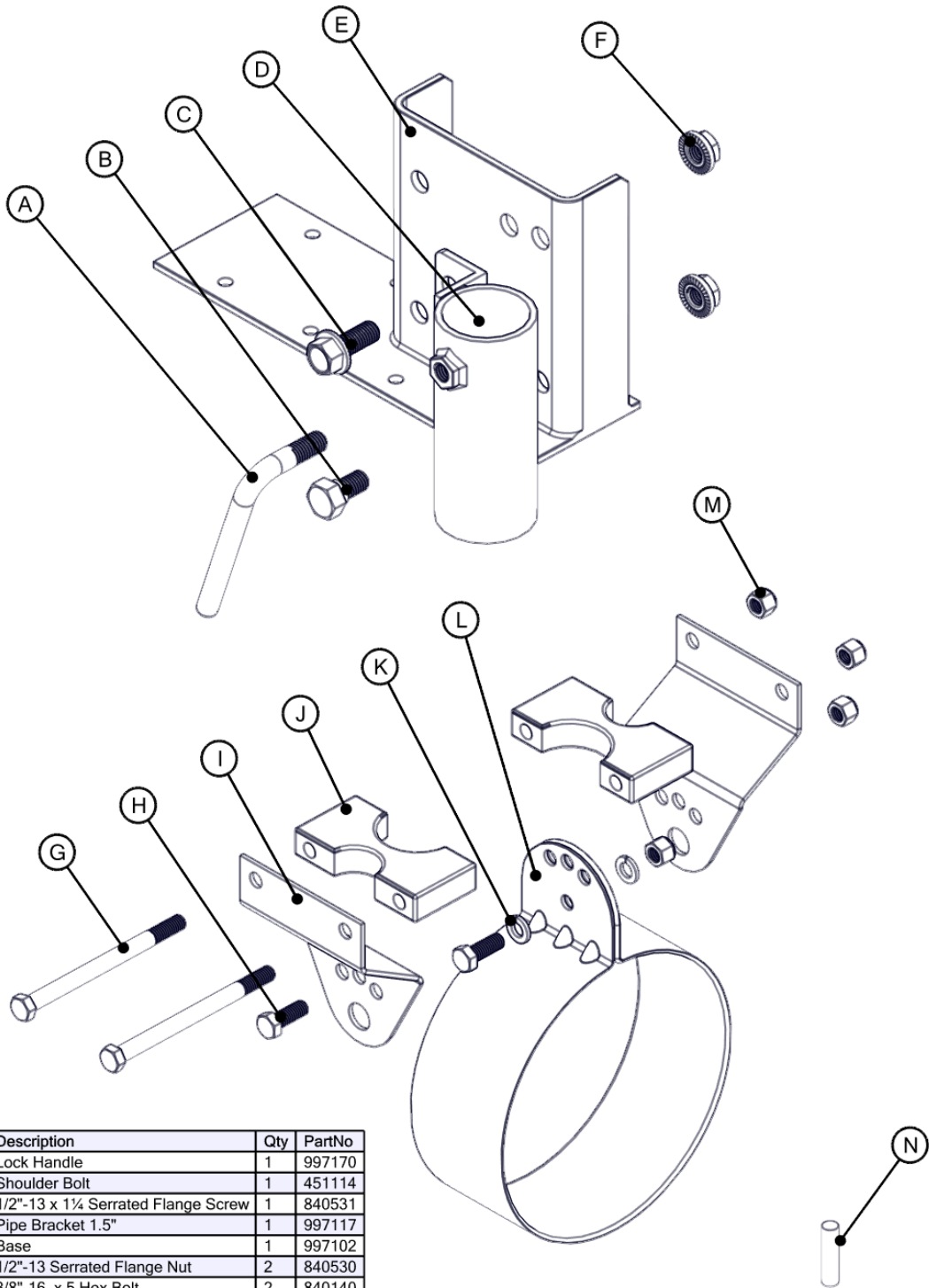
## **Important!**

**Installation may require the help of another person.**

## **Note:**

Installation may vary; the user is to supply the appropriate hardware to secure the mounting bracket to the dock or piling. Kasco suggests stainless steel.

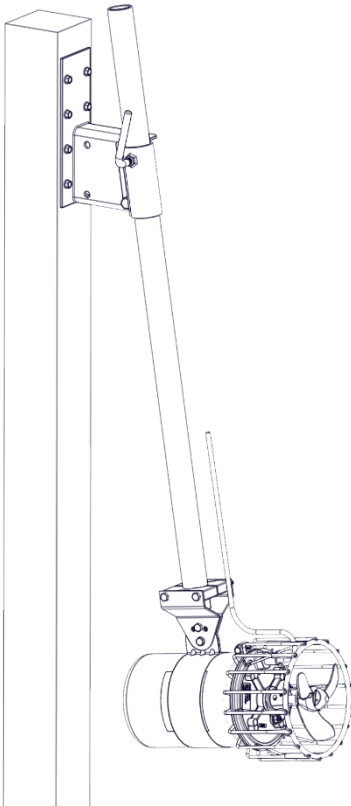
# Parts Included



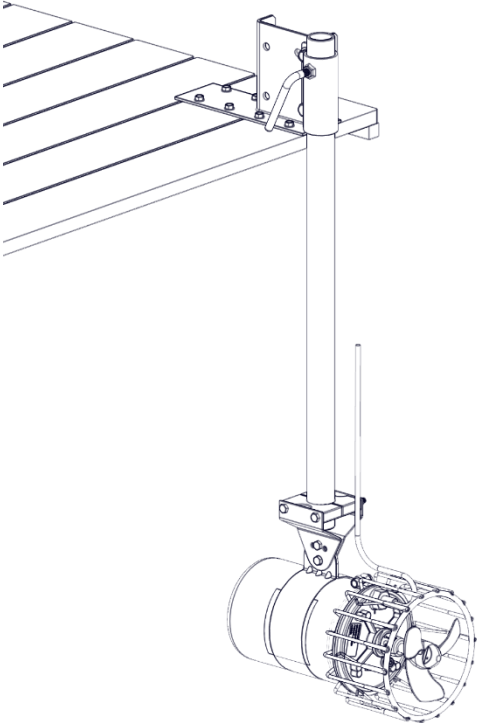
BOM ID	Description	Qty	PartNo
A	Lock Handle	1	997170
B	Shoulder Bolt	1	451114
C	1/2"-13 x 1 1/4 Serrated Flange Screw	1	840531
D	Pipe Bracket 1.5"	1	997117
E	Base	1	997102
F	1/2"-13 Serrated Flange Nut	2	840530
G	3/8"-16 x 5 Hex Bolt	2	840140
H	3/8"-16 x 1 Hex Screw	2	566250
I	Industrial Strut Plate	2	997176
J	Collar Block	2	997172
K	3/8" Split Lock Washer	2	566230
L	Can Strap	1	997174
M	3/8"-16 Nylon Lock Nut	4	462214
N	Grease Packet	1	341300

# Mounting Options

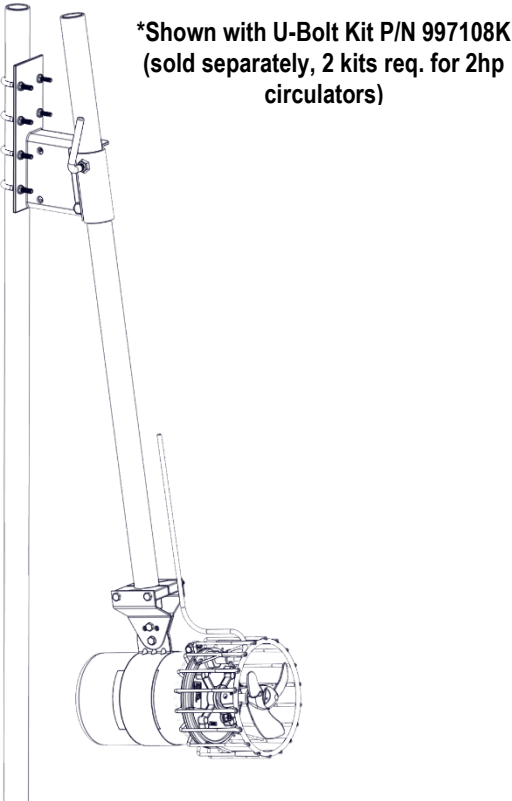
Pier Mount:



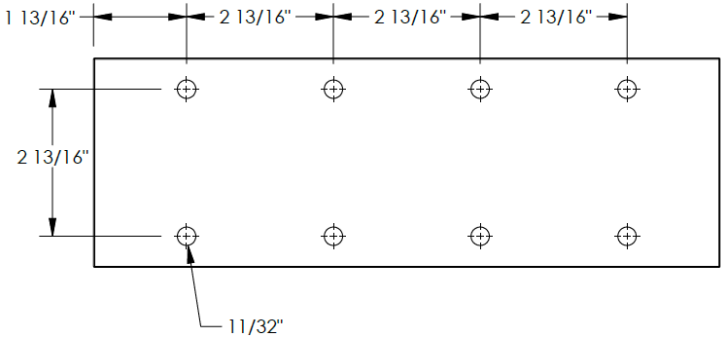
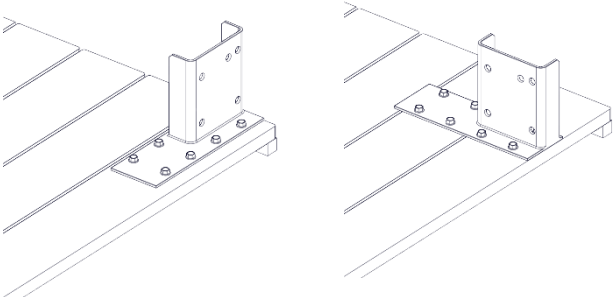
Dock Mount:



Pipe Mount\*:



\*Shown with U-Bolt Kit P/N 997108K (sold separately, 2 kits req. for 2hp circulators)

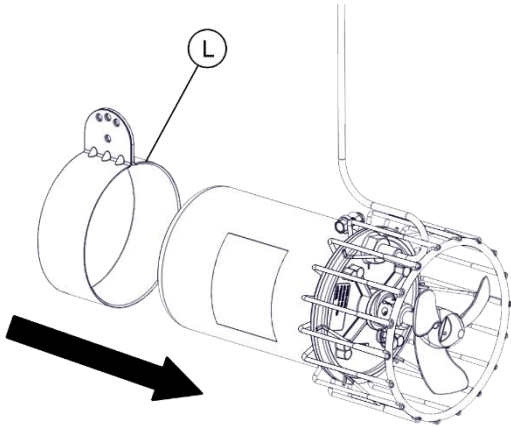


Base (E) - Hole Location Dimensions

## Mount Assembly

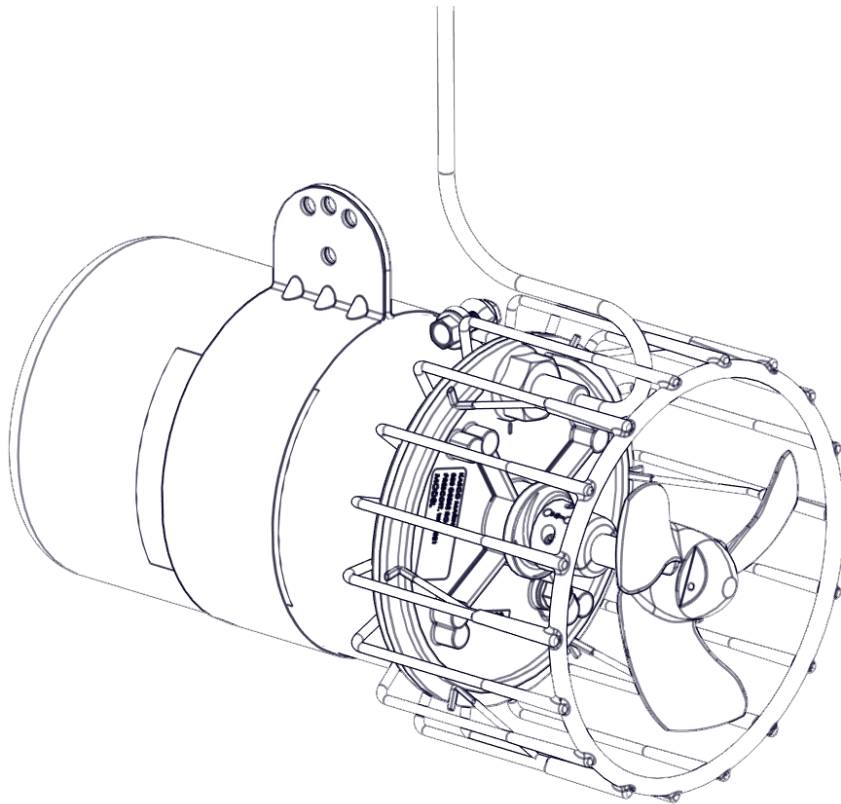
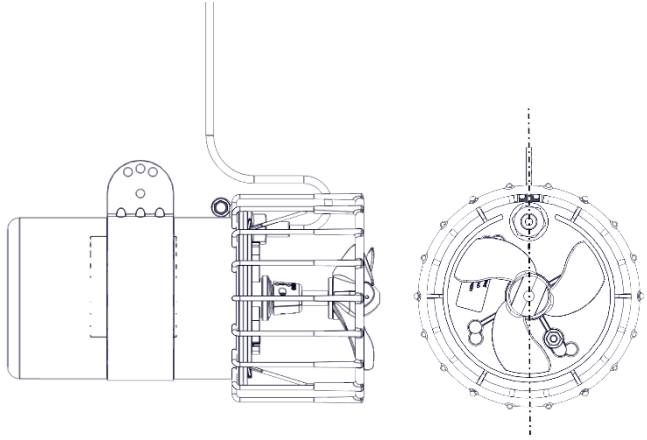
### Step 1

Slide can strap (L) into position on the unit as shown below.



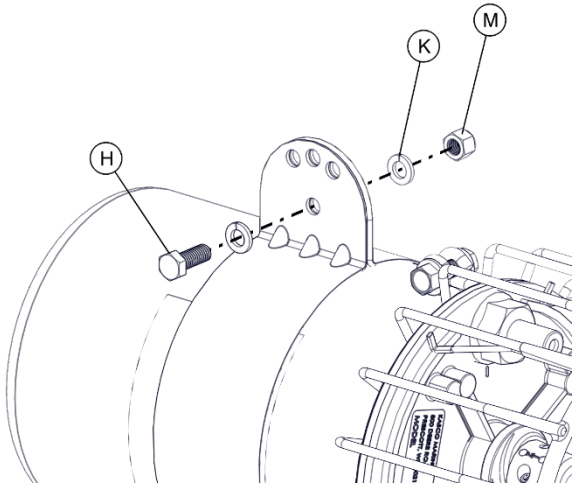
### Step 2

Position with a 2" distance from unit cage, ensuring the cord is in line with the can strap flanges.



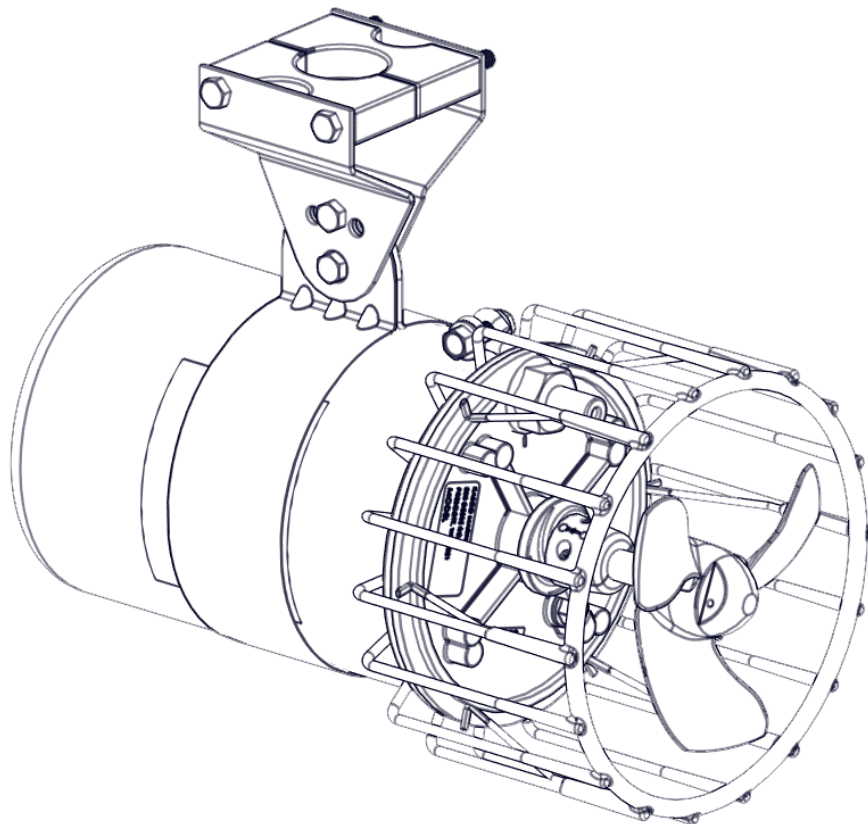
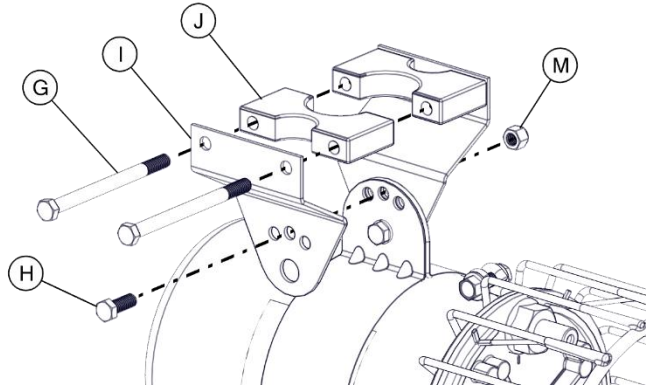
### Step 3

Secure can strap with 3/8" x 1.00" hex screw (H), (2) 3/8" split lock washers (K), and 3/8" nylon lock nut (M).



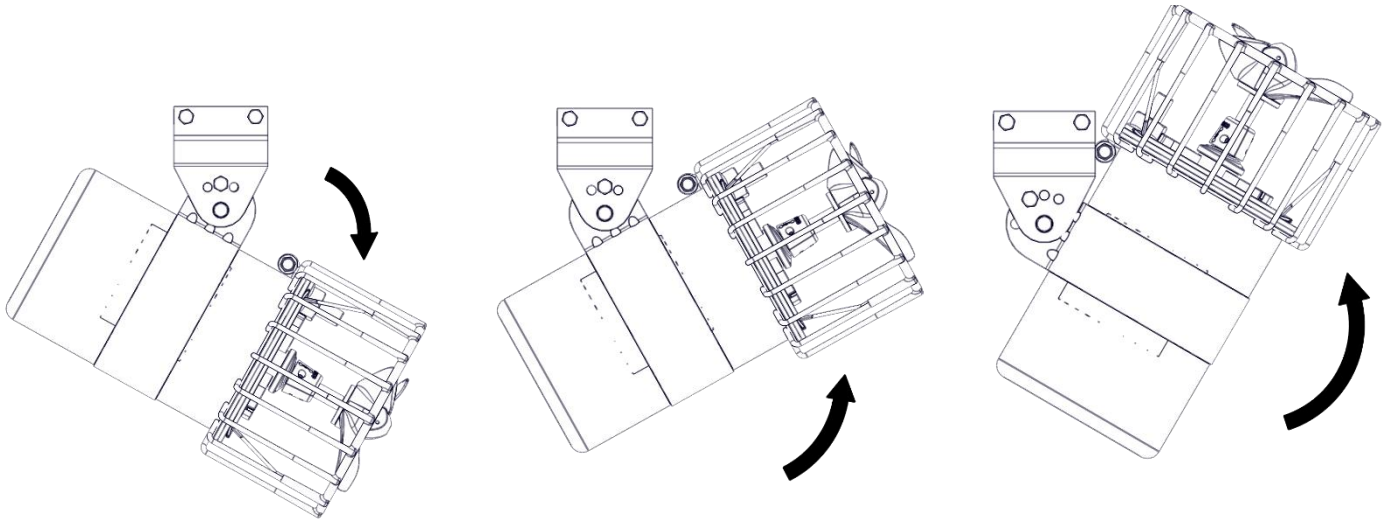
### Step 4

Using both strut plates (I) on either side of the can strap flanges, sandwich the collar blocks (J) together with (2) 3/8" x 5.00" hex bolts (G), being sure that the largest hole is formed for the pipe. Secure the struts to the can strap by tightening 3/8" x 1.00" hex bolt (H) and 3/8"-16" nylon lock nut (M).



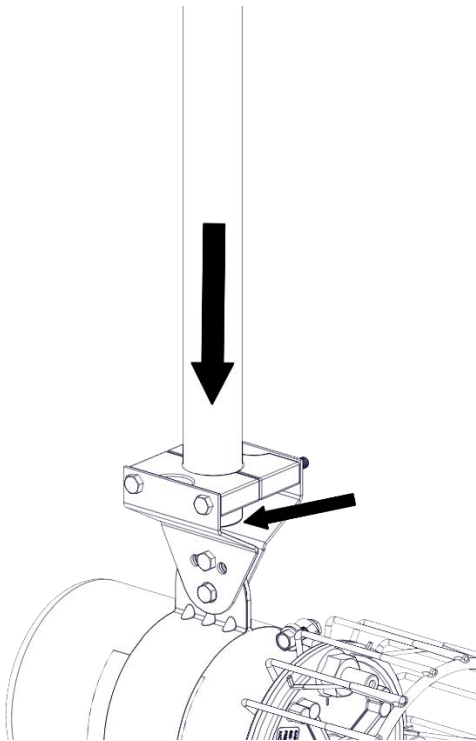
### Step 5

Multiple positions for mounting the unit are possible; after assembly of the mount, it may be necessary to adjust the unit to the most ideal orientation. A few examples are shown below:



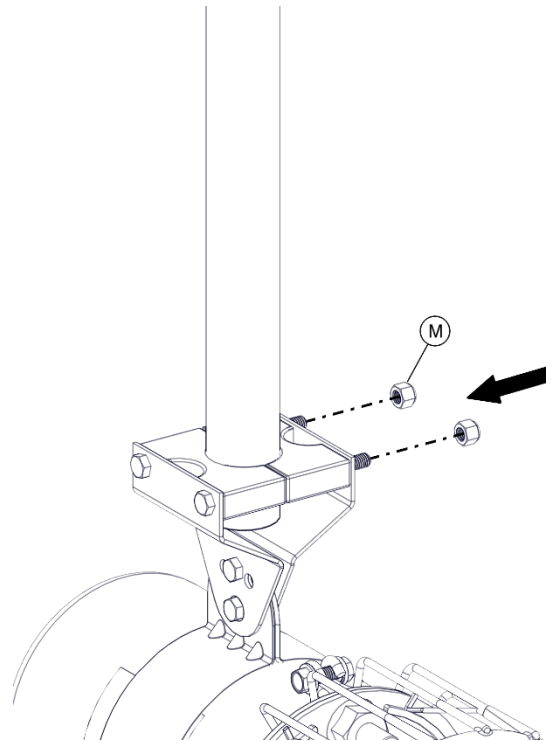
### Step 6

Insert pipe fully, ensuring that pipe end touches strut plates.



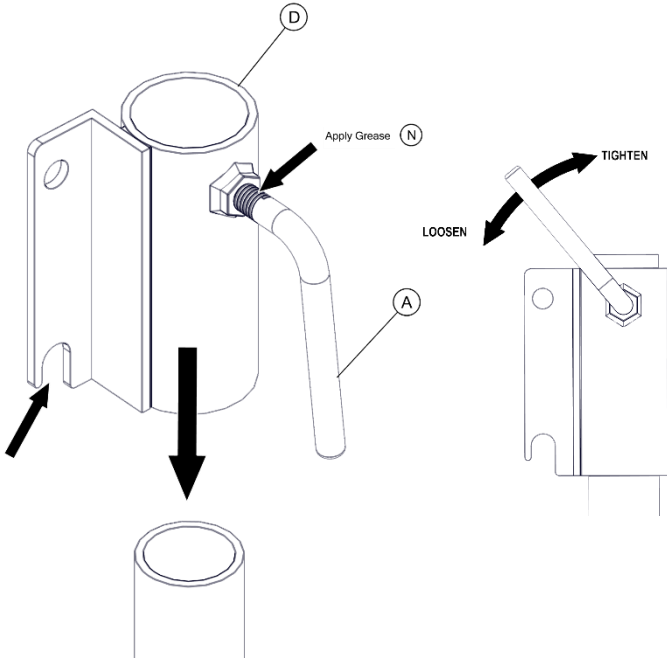
### Step 7

Secure pipe by adding (2) nylon lock nuts (M) and tightening.



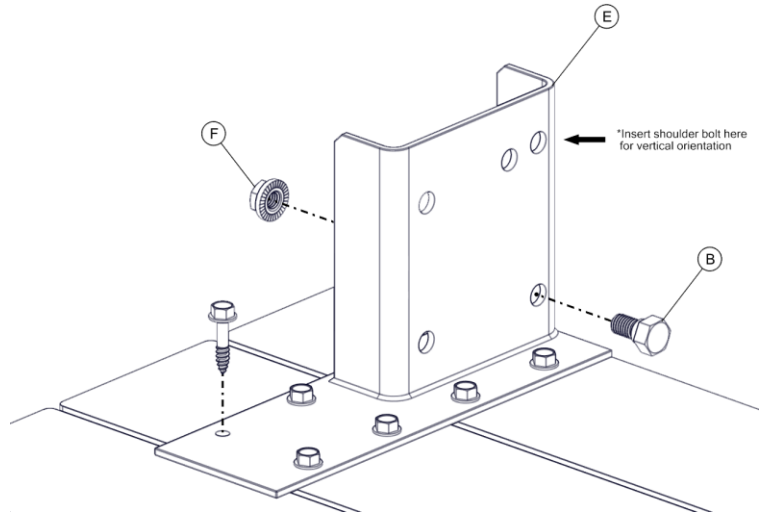
### Step 8

Slide pipe bracket (D) over the pipe. Ensure the notched end of the bracket is towards the unit end of the pipe. To prevent galling, apply a small amount of grease (N) to the threads of the lock handle (A) before tightening. Secure the bracket to the pipe by tightening the lock handle.



### Step 9

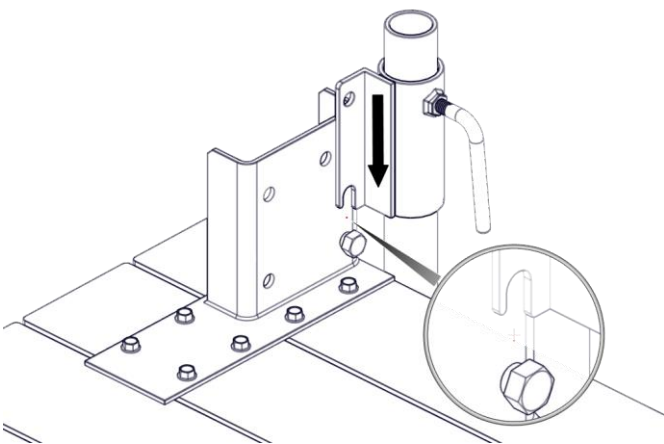
Secure base (E) in manner appropriate with intended mounting selection (U-bolts, screws, etc. NOT included). Insert shoulder bolt (B) and corresponding 1/2"-13 serrated nut (F) to the bottom hole location in the base as shown below\*.



### Step 10

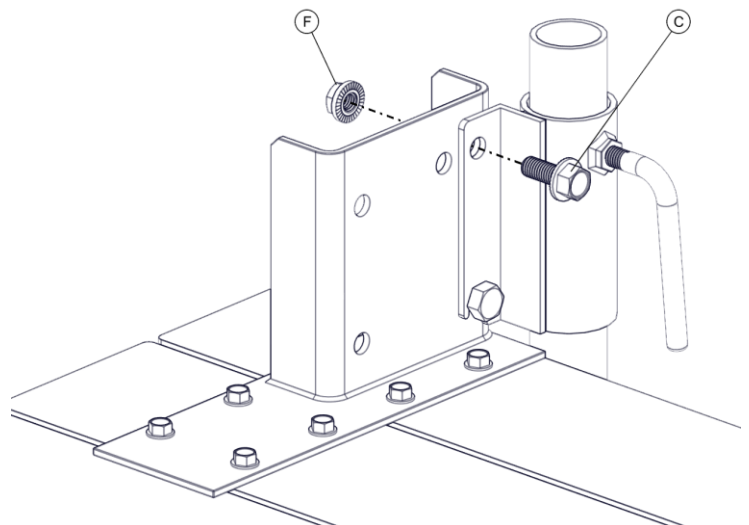
**This step may require additional help.**

Once the hardware has been installed, lift assembly into position, align slot of pipe bracket with the shoulder bolt and lower unit until it rests on the shoulder bolt.



### Step 11

Install 1/2" x 1-1/4" serrated flange screw (C) in the top position hole and secure with 1/2"-13" serrated nut (F).

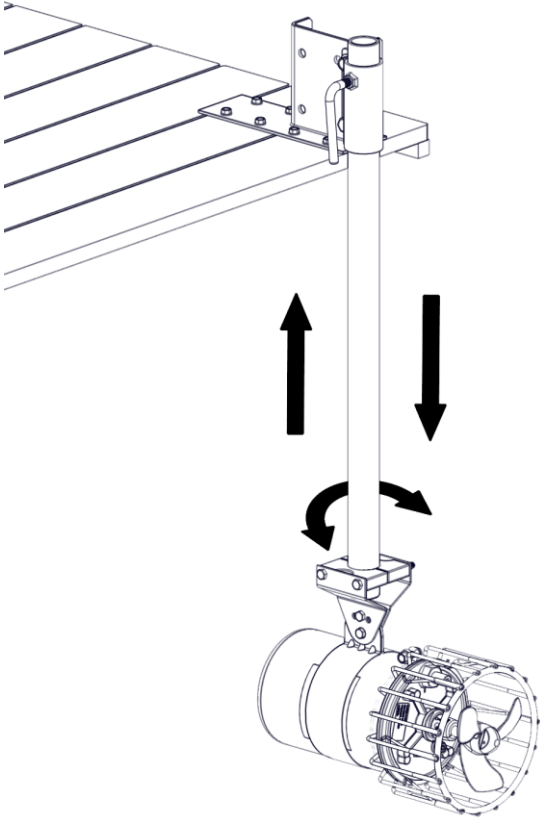




## Adjustments and Storage

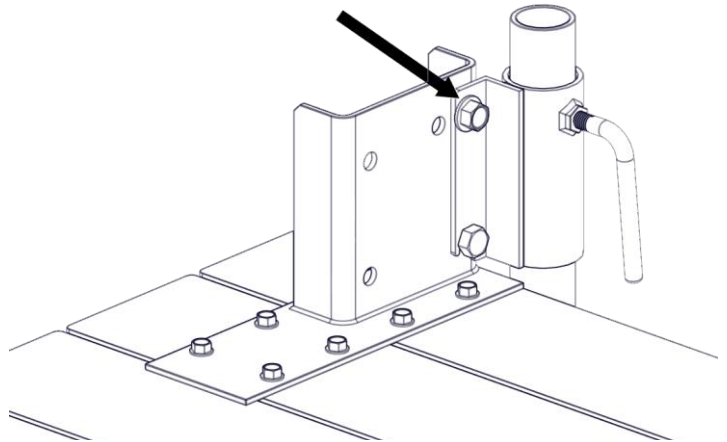
### Step 12

Unit can be adjusted up or down or swiveled left or right depending on situation and location.

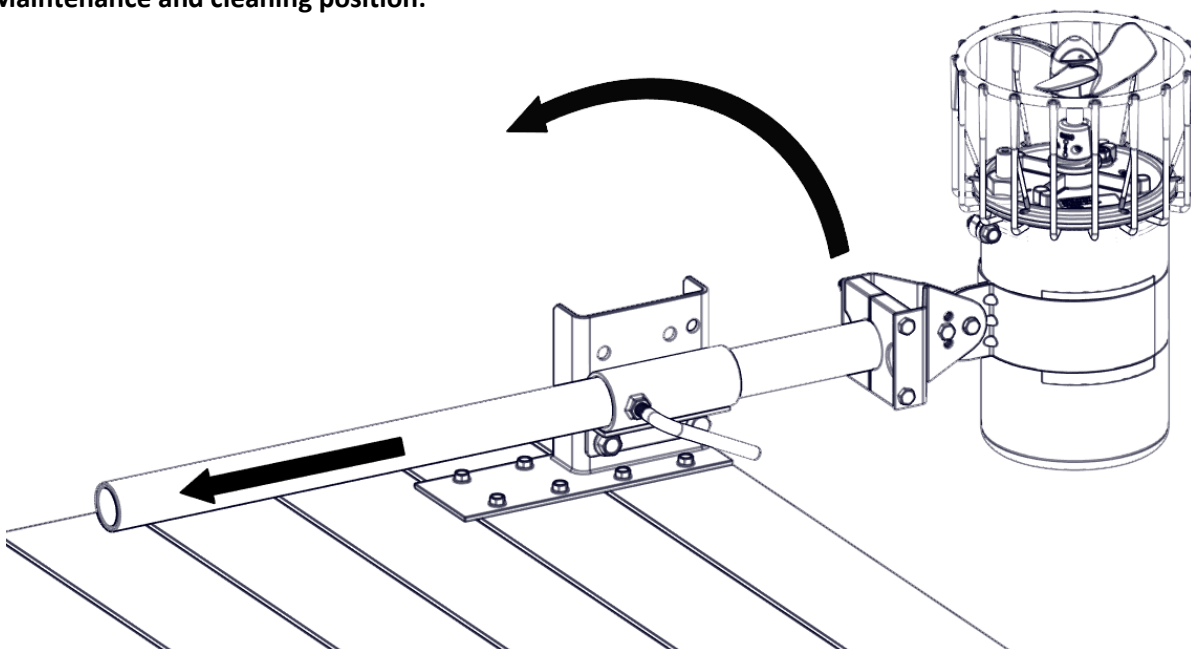


### Step 13

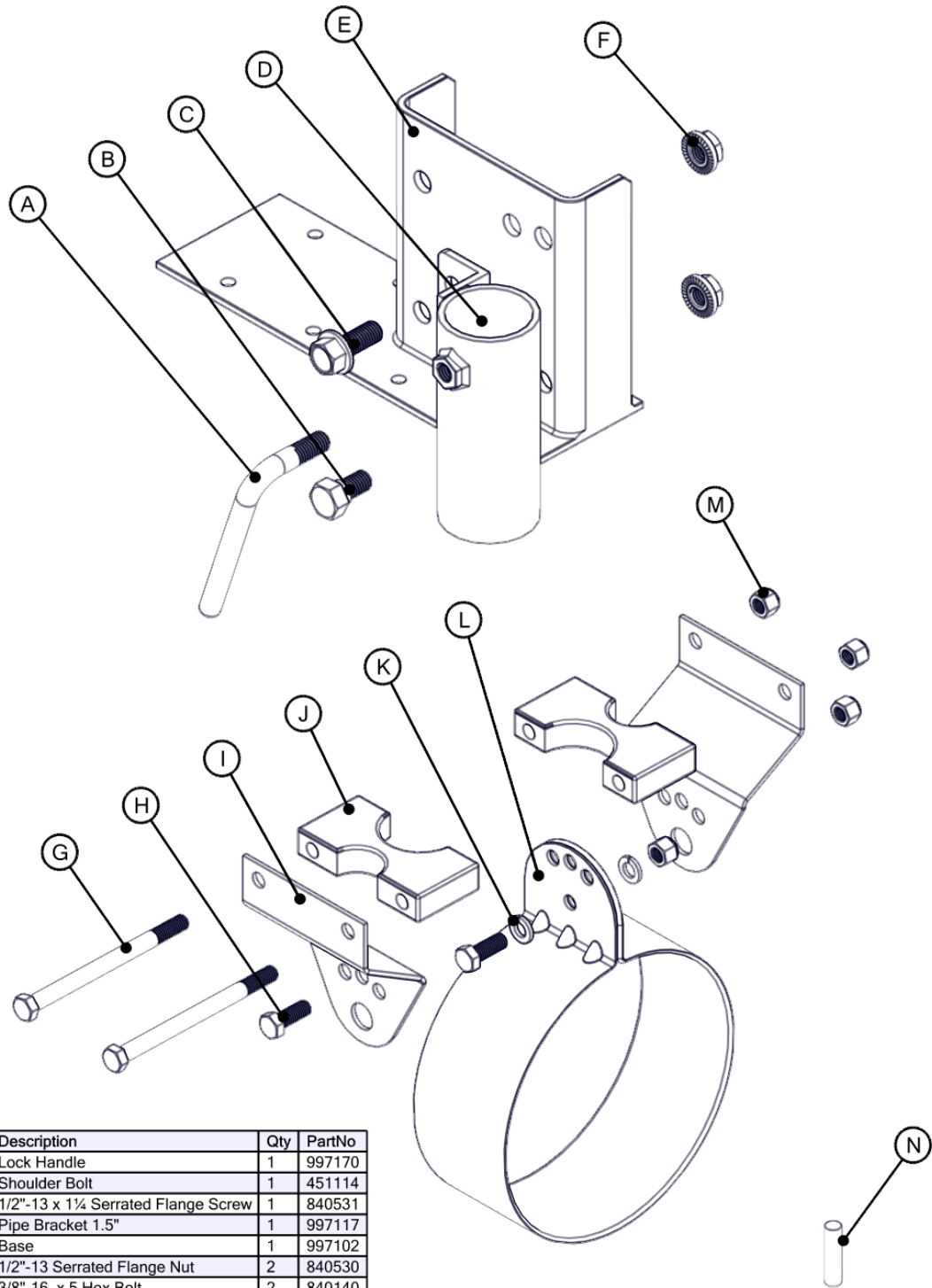
For storage or unit maintenance, the unit can be pivoted up and out of the water by removing the top 1/2" x 1-1/2" hardware and pivoting the unit 90 degrees. Unit can be removed entirely from mount by lifting bracket off shoulder bolt.



### Maintenance and cleaning position:



## Replacement Parts



BOM ID	Description	Qty	PartNo
A	Lock Handle	1	997170
B	Shoulder Bolt	1	451114
C	1/2"-13 x 1 1/4 Serrated Flange Screw	1	840531
D	Pipe Bracket 1.5"	1	997117
E	Base	1	997102
F	1/2"-13 Serrated Flange Nut	2	840530
G	3/8"-16 x 5 Hex Bolt	2	840140
H	3/8"-16 x 1 Hex Screw	2	566250
I	Industrial Strut Plate	2	997176
J	Collar Block	2	997172
K	3/8" Split Lock Washer	2	566230
L	Can Strap	1	997174
M	3/8"-16 Nylon Lock Nut	4	462214
N	Grease Packet	1	341300