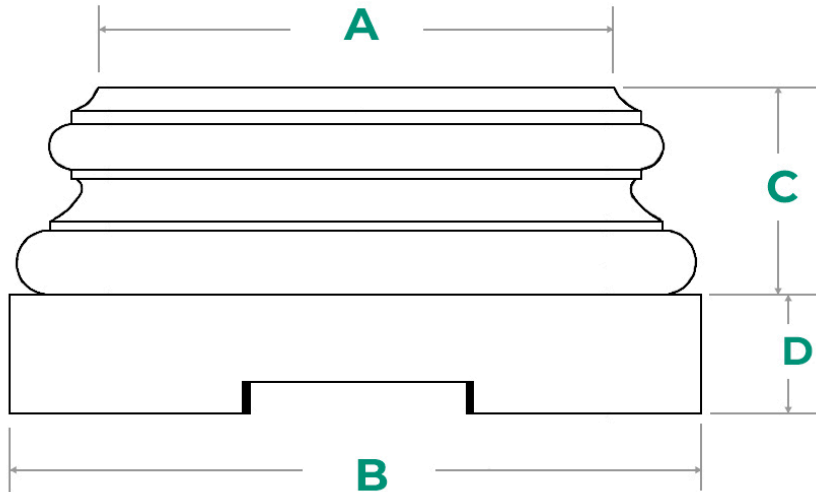


IONIC ORDER "ATTIC" BASE MOLDING & PLINTH

LOAD-BEARING



* COLUMN SIZE	ACTUAL DIAMETER	PLINTH WIDTH	BASE MOLD HEIGHT	PLINTH HEIGHT	OVERALL HEIGHT
	A	B	C	D	C + D
6"	6"	8-7/16"	2-7/16"	1-1/2"	3-15/16"
8"	8"	10-15/16"	3"	1-7/8"	4-7/8"
10"	10"	13-1/2"	3-3/4"	2-3/8"	6-1/8"
12"	12"	16-1/8"	4-1/2"	2-3/4"	7-1/4"
14"	14"	19"	5-5/16"	3-5/16"	8-5/8"
16"	16"	21"	6"	3-7/8"	9-7/8"
18"	18"	24"	6-11/16"	4-3/16"	10-7/8"
20"	20"	26-1/2"	8-1/8"	4-3/4"	12-7/8"
22"	22"	30-3/8"	8-7/8"	5-1/4"	14-1/8"
24"	24"	32"	9-5/8"	5-5/8"	15-1/4"
28"	28"	38"	11-3/8"	6-3/4"	18-1/8"
36"	36"	48"	13-1/2"	7"	20-1/2"

* **COLUMN SIZE** = Refers to the bottom diameter of the column shaft

* Bases may have up to 1/8" +/- dimensional variance