

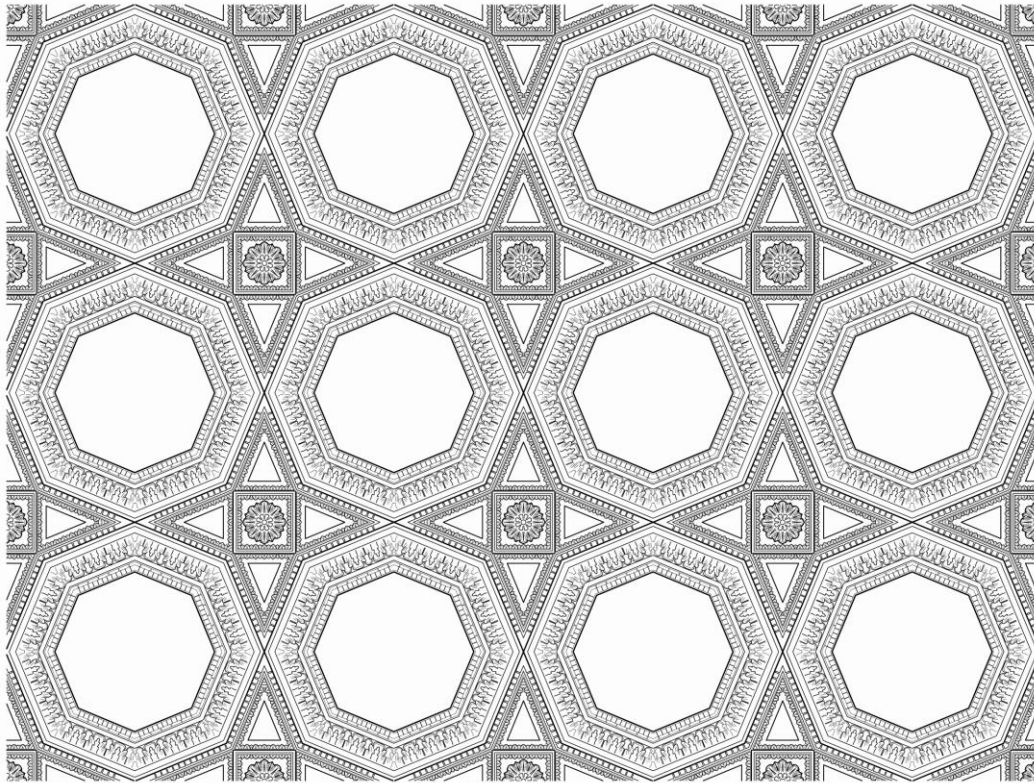


BROCKWELL INCORPORATED



www.COLUMNSDIRECT.com

4728 SCARBOROUGH PLACE ▪ STONE MOUNTAIN, GA 30087 ▪ PHONE: 980-282-8383 ▪ E-MAIL: sales@columnsdirect.com



Quantity:	Customer:
Product Name: Italian Coffered Ceiling Panel Example	Project Name:
Item #: CLP-A90052-PLAS-2	Approved:
Material: Plaster	Approximate Lead Time ____ Week(s) After Approved Shop Drawings
Dimensions: Specify your square footage	* This product is Made to Order
CLIENT SIGNATURE:	DATE:

ALL RIGHTS RESERVED. THIS DRAWING IS THE PROPERTY OF BROCKWELL INCORPORATED AND MAY BE UTILIZED ONLY IN ASSOCIATION WITH PROJECTS IMPLEMENTING BROCKWELL INCORPORATED PRODUCTS. THIS DETAIL MAY NOT APPLY TO ALL CONDITIONS OR CONSTRUCTION SITUATIONS. FOR ALL OTHER SCENARIOS, PLEASE CONSULT WITH A BROCKWELL INCORPORATED CONSULTANT. | 980-282-8383 or sales@columnsdirect.com