

W

WE CHAMPION
THE WOMAN
THAT CHOOSES

CHOOSES WHAT SHE DOES WITH HER TALENT,
WITH HER TIME, MONEY AND DRESS SENSE.

WHO IS MONA WIE

MONA WIE is luxe workwear. Chic and unfussy. Intelligent and considered. For the passionate, purposeful woman inspired by unique design, refined cuts, quality craftsmanship and natural fabric. From the seasoned professional to the brave switching careers, she's cultured, enjoys meaningful conversations and lasting relationships - and we want our clothes, the material and the aesthetic to reflect that.

MONA WIE is the collaborative effort of founder Ramona Wilmes, lauded pattern-maker Elke Hoste and an exciting young designer from Antwerp. Together they explore the art of making clothes, while placing priority on timeless and feminine silhouettes, strong shapes, highest-quality Italian fabrics, and most importantly, natural fits.



WE STRIVE FOR A UNIVERSAL
ELEGANCE WHERE
THE OUTFIT LOOKS AS SMART
AS THE WOMAN IN IT.





T H E D R E S S E S

Exploring the line between work and play, MONA WIE is interested in helping active women feel inspired and creative. Our lineup of minimalist, feminine silhouettes is essentially free of excess; bold yet timeless clothes that take a woman from day to night.

We debut with a dress collection and will add more pieces to create a meaningful curated wardrobe.



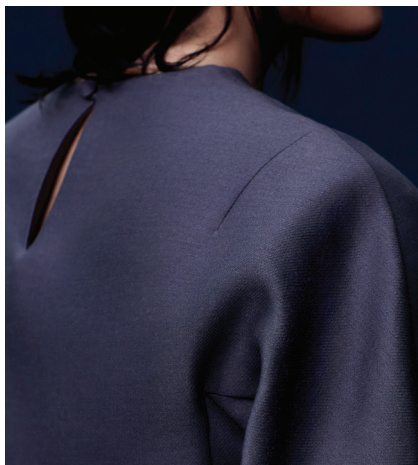
LIMITED EDITIONS,
OUR FOUR INTRODUCTORY
PIECES CHAMPION TIMELESS
DESIGN, ENDURING QUALITY,
SUSTAINABILITY AND
A COMFORT YOU'LL LOVE.



RAMONA

Fitted statement dress with structured refined collar that exudes femininity and elegance. Assymetric seam in the front and opening of the hemline that add a creative flair. Covered zip closure on the left. This dress comes in two variants: Nude Rose plain-weave wool and Smokey Black wool crepe.





DUNJA

Sophisticated shift dress with structured Ottoman sleeves and laid-in pockets. A button and sling duo is positioned at the nape. A box-pleat at the lower part of the back provides ample freedom. Made from luxurious Gabardine silk and wool blend in Cool Gray and Midnight Blue. A third variant is made of wild silk in Imperial Red.

The dress borrows its name from my elder sister who fitted the first sample. The fit was so natural and in sync with her body type and character that I decided to name this model after her.





EMMA

Little black dress with square neckline and silk chiffon between yoke and shoulder that creates an intriguing “bolero” effect. The lower part features 4 box pleats for extravagant mobility. Covered zip closure in the back. Made from luxurious Gabardine silk and wool blend. The hemlines are finished with black silk bias tape.

At our first encounter, Emma and I were thinking of flattering and elegant dress designs and Emma expressed her love for box-pleat skirts. When the designer showed the first sketches of this dress, there was no doubt who this dress should be named after.





AIKO

Interpretation of the shirt dress with short Kimono sleeves and a high-waist adjustable gathering. Some women like to pull the strings tight, others prefer to keep them loose. This dress comes in different fabrics and colours: The striped and marine blue Aiko dress are made of poplin cotton and the Hooker's green dress is made of heavy plain-weave cotton. The fourth variant in steel blue is a silk-cotton blend.

This dress was named after my dear friend Aiko from Japan.



WE BELIEVE IN CHOOSING LESS AND CHOOSING BETTER.



WE LOVE SLOW FASHION

Our design mission is ethical and earnest: to produce considered garments that make a social statement. Starting from the materials and the way they are sourced, to production and distribution. Because all it takes are a few well-placed outfits, the perfect cut, to create timeless looks and a sustainable closet.

We realise that the objective of being sustainable is a long-term commitment and we are working towards it.

SUSTAINABILITY ISN'T A COMPROMISE ON STYLE.

WE GIVE BACK

MONA WIE gives back to community and Mother Earth. With the intention of manufacturing high-quality, long-lasting clothes while minimising our impact on the environment, minimum ten percent of our profits are donated to organisations that support women's rights or nature conservation programmes.



ABOUT



MEET THE FOUNDER RAMONA WILMES

Born to a Portuguese mother and a Belgian father, my passport traces the world but it all started in my mother's atelier. Before I even knew how to lock-stitch, I was wearing tailor-made clothes my mother made. And while adolescence welcomed new opportunities, my love for fashion never faded. Fast forward many years later I was at a crossroads with my career and wardrobe. I wanted to look elegant and smart, creative even - but not too quirky - and yet my options were largely lackluster and uninspiring. I became increasingly disappointed in the fashion industry: its negative impact on the environment and humans, failing composition, quality and longevity.

*It was then I realised the only way to move forward
was to go back to the atelier.*

I love to hear from you - ramona@monawie.be

