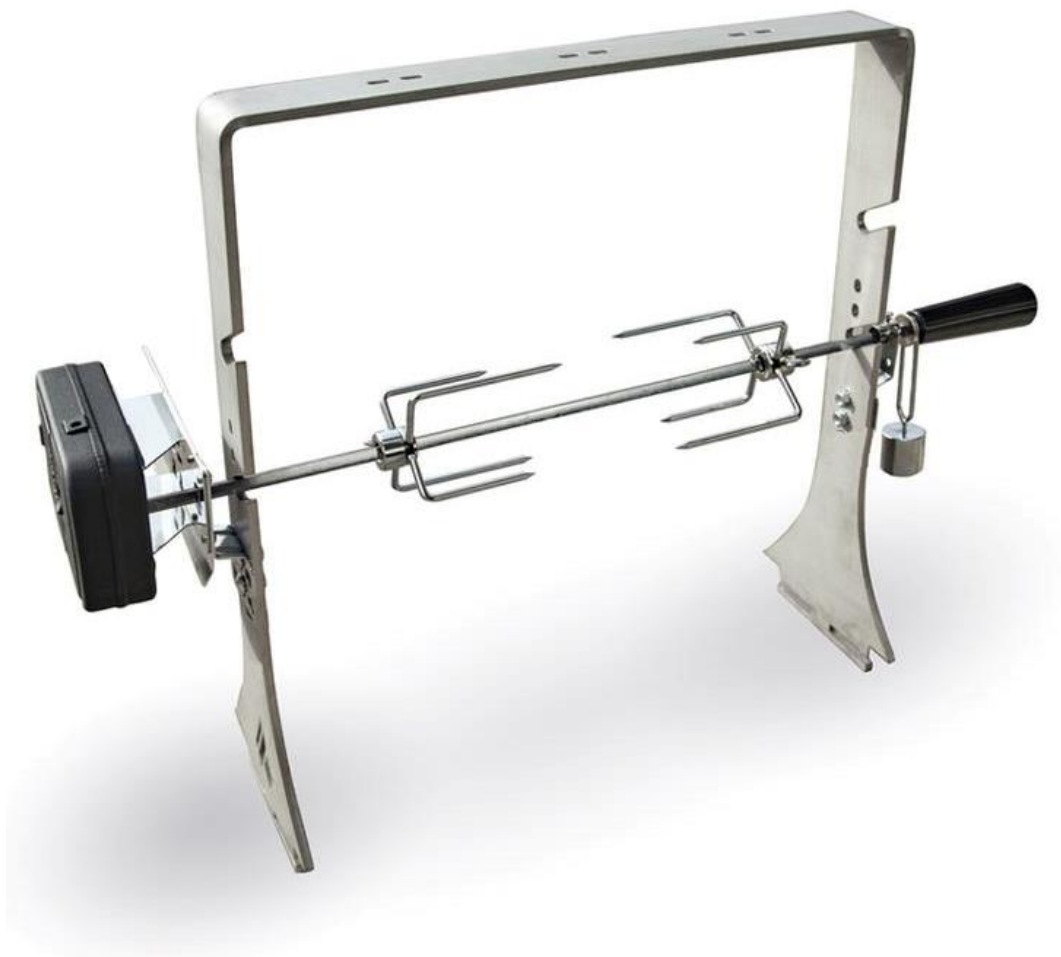




# ARTEF L A M E

## ROTISSERIE ATTACHMENT SET UP INSTRUCTIONS



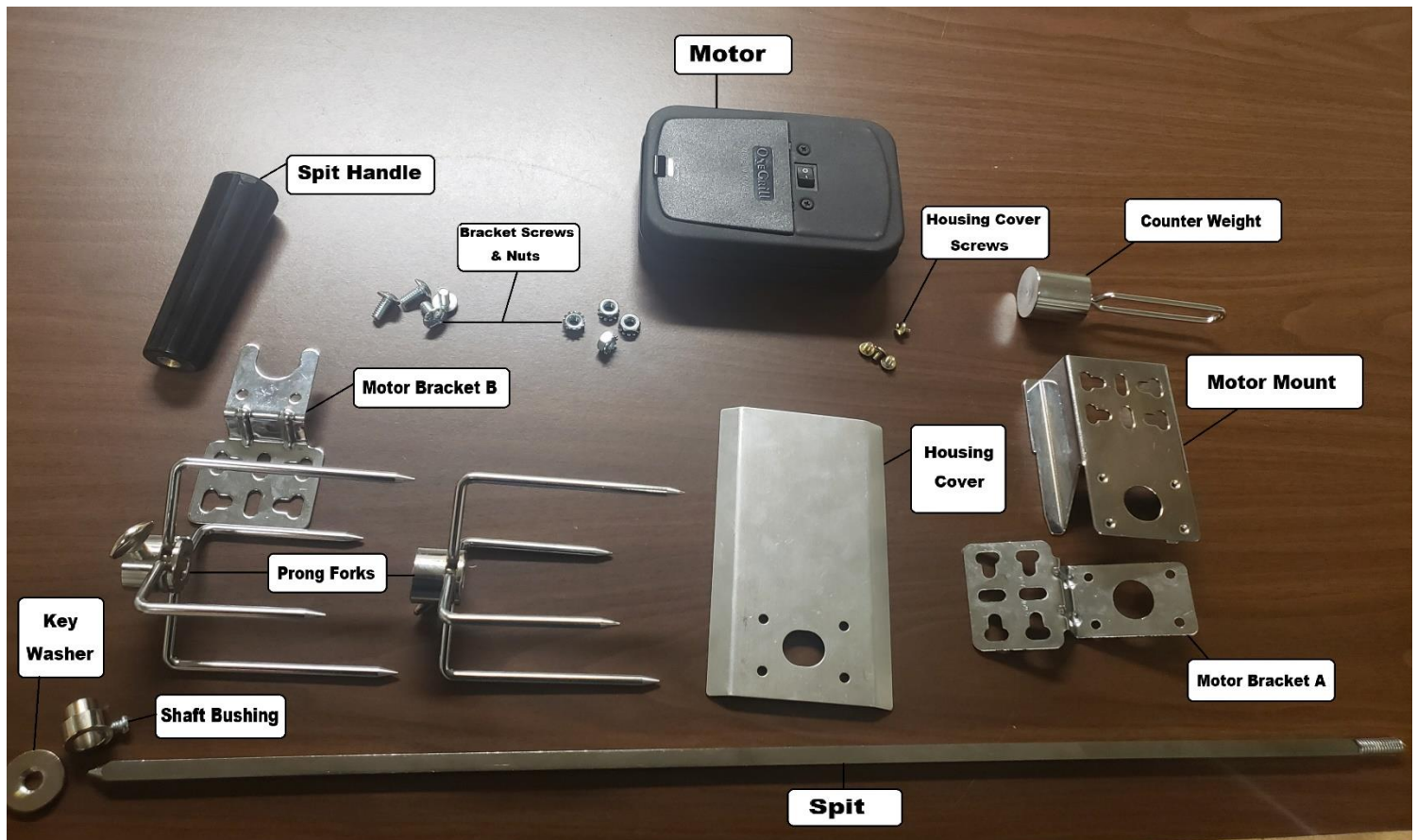


# ARTEFLAME

FOR YOUR SAFETY PLEASE READ ALL INSTRUCTIONS PRIOR TO USE!

1. Surfaces will become hot during use. Use handle or mitts.
2. To protect against electrical shock, do not immerse motor in water or any other liquid.
3. Close supervision is necessary when appliance is used by or near children.
4. Do not operate after the appliance malfunctions or has been damaged in any manner.
5. The use of accessory attachments not recommended by the appliance manufacturer may cause injuries.
6. Do not place on or near a hot gas or electric burner, or in a heated oven.
7. Extreme caution must be used when moving an appliance containing hot oil or other hot liquids.
8. Do not use appliance for other than intended use.

## ROTISSERIE SET PIECES



# ROTISSERIE ASSEMBLY INSTRUCTIONS

1. Start by gathering Motor Mount, Motor Mount Bracket A, the Housing Cover Screws, and the Housing Cover.



2. Line up the large opening and corresponding screw holes of the Motor Mount, Bracket, Housing Cover. Secure with the 4 Housing Cover Screws (as shown below).



3. Bring your Mount Assembly close to your stand and line up the lower part of the bracket to your desired height facing the outside of the stand. The large opening should line up with the notch in the stand. Secure the assembly in place with 2 bracket screws/nuts (as shown below).



4. Gather Motor Mounting Bracket B and the other 2 bracket screws/nuts. Secure at the same height as the Motor Mount Assembly on the opposite side of the Stand (as shown below).



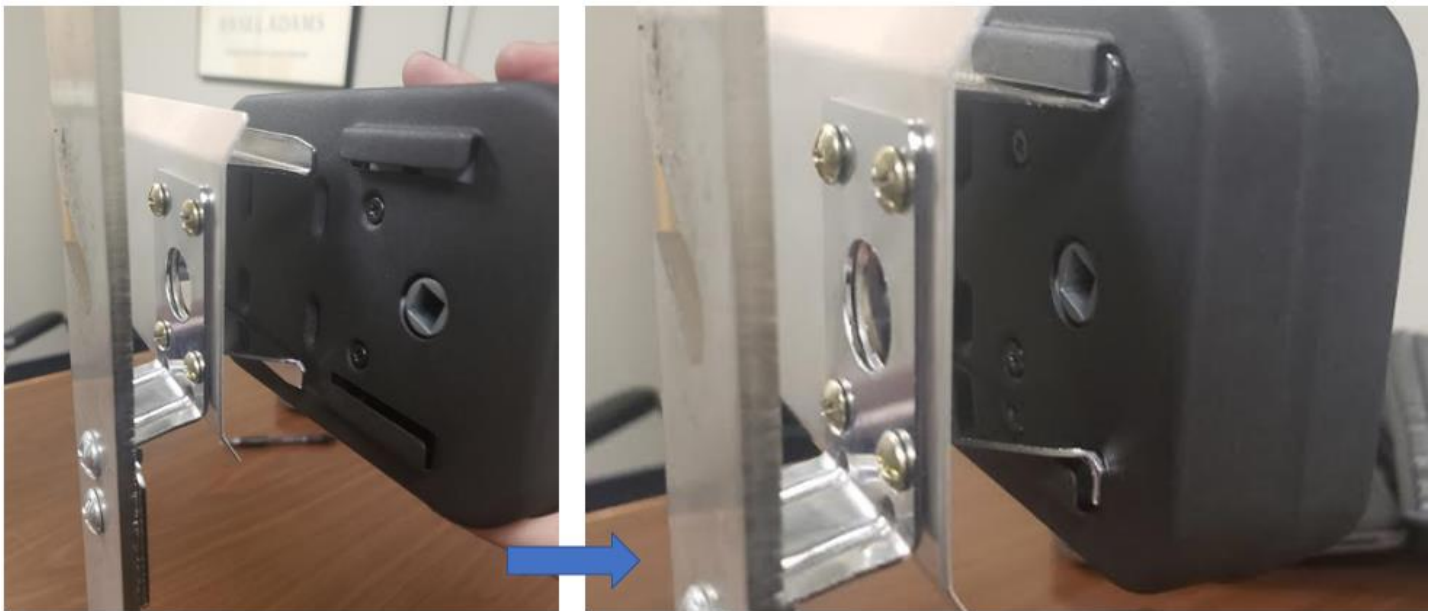
5. Set the Stand aside and gather the Spit, Spit Handle, Counter Weight, Key Washer, and Shaft Bushing.



6. Loosen the Shaft Bushing to allow it to slide on Spit. Holding the threaded end of the Spit, slide on the bushing near where the threads end. Slide the Counter Weight on over the threads then screw on the Key Washer. Using the bushing and washer to hold the counter weight in place tighten them down while leaving enough space for counter weight to move freely. Screw the Handle on to hold everything in place (as shown below).



7. Get your Motor and install batteries (not included). Slide on to bracket assembly (the motor only slides on in one direction).

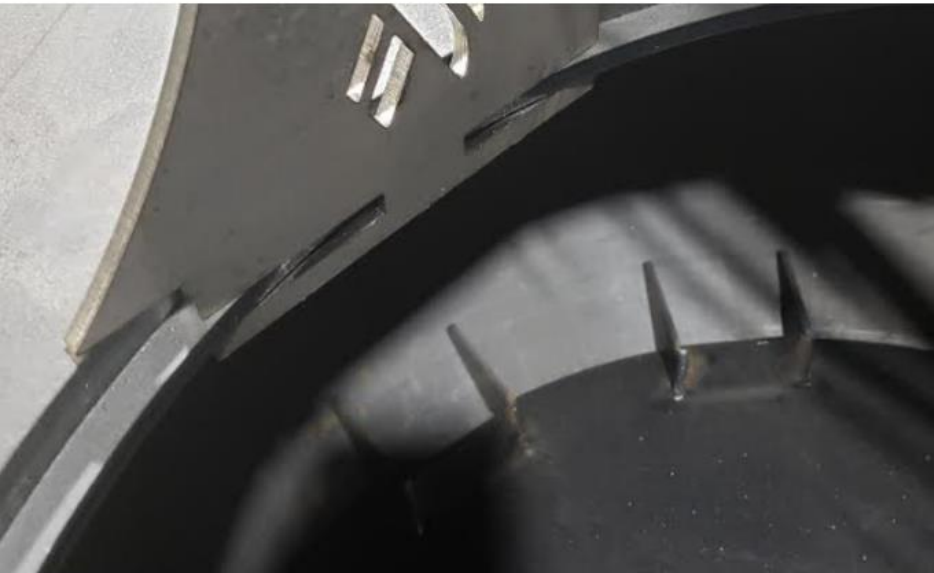


8. Gather the Spit Assembly and both Fork Prongs. Loosen the Fork Prongs and slide them on with the pointed tips facing each other. Slightly tighten them in place towards the middle of the spit so they do not slide off. Line the Spit up with the cut-out notches on the Stand, then rest the side of the spit with the handle on the open-ended bracket. Using the handle and your other hand guide the pointed end of the spit into motor (as shown below).



## POSITIONING YOUR ROTISSERIE

9. After your Rotisserie is assembled, push in its two legs towards the bottom. The Rotisserie Stand will flex inward allowing you to position it so it rests on the inner ring of the cooktop. Relieving pressure will allow your Rotisserie to snap into place on both sides (as shown below).



10. Ensure fit by attempting to wobble rotisserie. If properly seated there should very little play.

Congratulations, you are ready to start grilling with your new Rotisserie.