

BACKYARD



OUTDOOR



REFILLS



THERMACELL PATIO SHIELD™

Mosquito Protection
Lantern



LANTERN

Active Ingredient:
d-cis/trans allethrin . . . 21.97%
Other Ingredients 78.03%
Total 100.00%
Contains petroleum distillates

KEEP OUT OF REACH OF CHILDREN

CAUTION: See box for additional
First Aid and Precautions

DIRECTIONS FOR USE

It is a violation of Federal law to use this product in a manner inconsistent with its labeling.

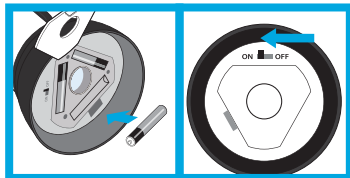
USEFUL TIPS:

- Allow 10 to 30 minutes, depending upon the size of the area, for product to take effect.
- This product works best in outdoor areas where there is minimal air movement, such as yards and outdoor campsites.
- Provides a maximum of 4 hours mosquito repellency per mat.
- Original, Earth Scent and Max Life Thermacell refill mats are effective in Thermacell mosquito repellent devices.
- Mats turn from pale blue to white when mosquito repellent has been used up and needs to be replaced.
- Some visible vapor will appear during use; this is normal.
- Use additional mosquito repellents to cover a larger area.
- Altitudes above 4,500 ft can affect product performance.
- Zone Indicator Light requires 3 AAA batteries.
- The mosquito repellent and light features operate independently.

Use Restrictions:

Only for outdoor use as a mosquito repellent. Do not use indoors, in tents or in any enclosed area. Do not insert anything other than Thermacell® mats into the mosquito repeller. Cover or remove all exposed food. Do not leave mosquito repeller unattended or use in windy conditions. Do not expose mosquito repeller or mats to rain. Place mosquito repeller on a flat, stable surface with the grill facing upward. Do not touch the grill; it will be hot after a couple of minutes. Clean with a damp cloth only when the mosquito repeller is cool and inactive. Only Thermacell® mats and cartridges will work in this mosquito repeller.

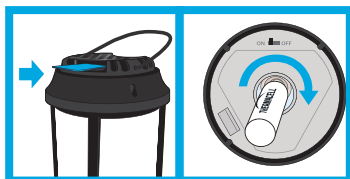
TO USE THE LIGHT:



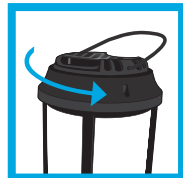
1. Open the battery compartment and insert 3 AAA batteries. Ensure the batteries are properly aligned with the +/- signs. Close the battery compartment.
2. To use the light, locate the switch under the lantern. Slide the ON/OFF switch to the ON position. To turn the light off slide the switch to the OFF position. Battery life does not affect mosquito repellent functions.

TO USE THE MOSQUITO REPELLENT:

1. Remove one Thermacell® Mosquito Repellent mat from wrapper. Insert the mat under the grill.



2. Remove cap from the butane cartridge and screw cartridge into lantern. Turn cartridge clockwise until it stops. Make sure the cartridge is fully inserted.
3. To activate the mosquito repellent, grasp the lantern collar and rotate collar to the right until the indicator line points to "ON". The gas will begin to flow.
4. Wait approximately 5 to 10 seconds then rotate lantern collar further to the right until the indicator line points to "START". You should hear a clicking noise.
5. To verify that the mosquito repellent is activated look at the oval view hole located on the lantern collar to the right of the "START" button. An orange light will glow. If there is no orange light, rotate indicator line back to the "ON" position and repeat rotation to the "START" position two to three times in rapid succession.



6. If there is still no orange light visible in the view hole, make sure the cartridge is completely screwed into place. Also, check the amount of fuel in the cartridge. If cartridge is empty or near empty, remove cartridge and replace with a new Thermacell® cartridge. Then repeat steps 3-5.
7. When finished using the lantern, rotate the lantern collar to the left until the indicator line points to "OFF". Allow lantern to cool completely before storing.
8. To replace a used mat, make sure indicator line points to "OFF" and allow lantern grill to cool. Push the used mat out by inserting a fresh mat.

TROUBLESHOOTING:

If you do not see an orange glow through view window

1. Repeat directions "To Turn ON".
2. If there is still no orange light visible, make sure the fuel cartridge is completely screwed into place. Repeat "Turn On" directions. Confirm the orange glow is visible.
3. Check the amount of fuel in the cartridge. If cartridge is empty or near empty, remove cartridge and replace with a new cartridge. Repeat "Turn On" directions. Confirm the orange glow is visible.

Not sure product is working?

1. Place product upwind for maximum mosquito repellency. Windy conditions can reduce mosquito repellent effectiveness.
2. Check the mosquito repellent mat. Mats turn from pale blue to white when it has been used up. See directions to replace Thermacell Mosquito Repellent Mat
3. Check the amount of fuel in the cartridge. If cartridge is empty or near empty, remove cartridge and replace with a new Thermacell cartridge. Repeat "Turn On" directions. Confirm the orange glow is visible.

Still have questions?

Call customer service at 1-866-753-3837 or email Service@Thermacell.com.

STORAGE AND DISPOSAL

Do not contaminate water, food or feed by storage or disposal. **Pesticide Storage:** Store unused mats in original box in a cool, dry place inaccessible to children and pets. Store mosquito repeller and butane cartridges in original box in a cool, dry place away from sources of heat. Store batteries in cool, dry place away from heat or open flame. **Pesticide Disposal and Container Handling:** Non-refillable container; do not refill or reuse this container. **If cartridge is empty or for used mats:** Do not reuse empty packaging, wrappers or cartridges. Do not puncture or incinerate empty cartridges. Place in trash or offer for recycling if available. **If cartridge is partly filled or for unused mats:** Call your local solid waste agency for disposal instructions. Never place unused mats down any indoor or outdoor drain. **For unwanted mosquito repeller:** Place in trash or offer for recycling if available.

PRECAUTIONARY STATEMENTS

Hazards to Humans & Domestic Animals
CAUTION: Contains petroleum distillates. Harmful if swallowed or absorbed through skin. Causes moderate eye irritation. Avoid contact with skin, eyes or clothing. Wash hands thoroughly with soap and water after handling and before eating, drinking, chewing gum, using tobacco or using the toilet. Remove and wash contaminated clothing before reuse.

FIRST AID

If Swallowed: Call a poison control center or doctor immediately for treatment advice. Do not induce vomiting unless told to do so by a poison control center or doctor. Do not give any liquid to the person. Do not give anything by mouth to an unconscious person.

If On Skin or Clothing: Take off contaminated clothing. Rinse skin immediately with plenty of water for 15-20 minutes. Call a poison control center or doctor for treatment advice.

If In Eyes: Hold eye open and rinse slowly and gently with water for 15-20 minutes. Remove contact lenses, if present, after the first 5 minutes, then continue rinsing eyes. Call a poison control center or doctor for treatment advice.

Have the product container or label with you when calling a poison control center or doctor, or going for treatment. For additional information on this pesticide product (including health concerns, medical emergencies or pesticide incidents), you may call 1-866-753-3837, Monday through Friday, 8:30 AM to 4:30 PM EST. After 4:30 PM, call your poison control center.

Note to Physician: Contains petroleum distillate. Vomiting may cause aspiration pneumonia.

PHYSICAL AND CHEMICAL HAZARDS

Butane Cartridge Hazard: Extremely flammable. Contents under pressure. Vapors may cause flash fire. Use only in a well ventilated area. Do not use, store, or dispose near heat, sparks, or flames. Do not puncture or incinerate. Containers exposed to direct sunlight or otherwise heated above 120°F (49°C) may burst. Store in cool, dry area. Intentional misuse by deliberately concentrating and inhaling the contents may be harmful or fatal. If vapors are inhaled, remove person to fresh air.

Batteries: Use only with AAA batteries. Do not pry battery with any instrument or tool or put in a fire. Battery may burst or release toxic materials.

ENVIRONMENTAL HAZARDS

This product is toxic to fish and aquatic invertebrates. Do not apply directly to water. Do not contaminate water when cleaning equipment or disposing of equipment washwater or rinsate. Drift may be hazardous to aquatic organisms in water adjacent to treated areas.

WARRANTY AND DISCLAIMERS

To the extent applicable by law, seller will not be held responsible for damage, injury or poor performance caused by use of other butane cartridges or repellent mats. Seller is not responsible for damage caused by using this butane cartridge in other butane products.



Thermacell Repellents, Inc.
26 Crosby Drive,
Bedford, MA 01730
Email: Service@thermacell.com
Toll Free 866-753-3837

EPA Reg. No. 71910-2
EPA Est. No. 71998-THA-1

PW0419