

THERMACELL
radiusTM
ZONE MOSQUITO REPELLENT
REFILLS

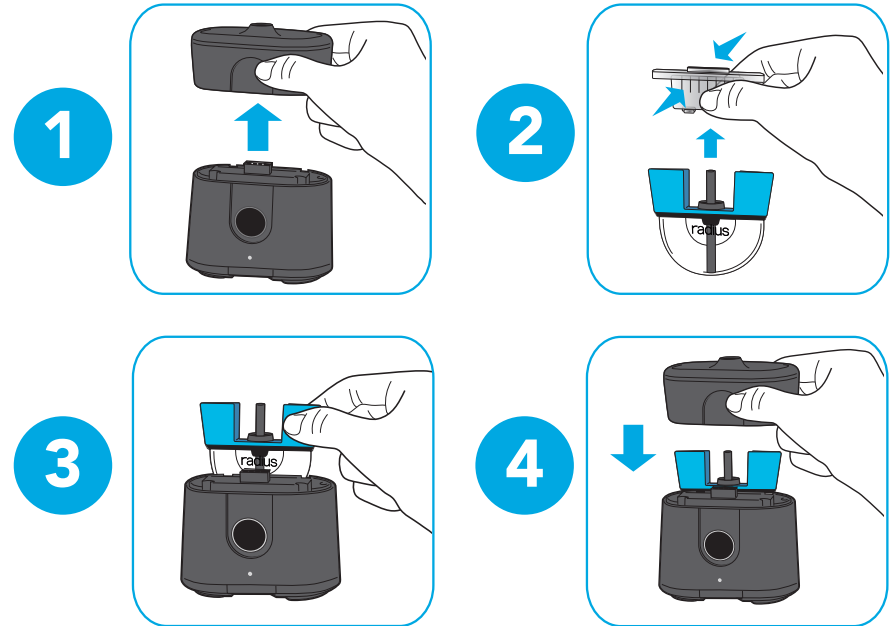
USER GUIDE

Directions For Use

It is a violation of Federal Law to use this product in a manner inconsistent with its labeling. Please refer to the instruction booklet that came with your repeller for specific features and directions.

To Insert a Refill

Replace empty repellent refill when repeller is turned off. Open the repeller. Remove the cap from the refill. Drop the refill into base. Close the repeller.



Prior to transporting, remove the repellent refill from the repeller and replace repellent refill cap.