

# THERMACELL®

## MOSQUITO REPELLENT LANTERN



### Active Ingredient:

d-cis/trans allethrin..... 21.97%

Other Ingredients.....78.03%

Total.....100.00%

Contains petroleum distillates

**KEEP OUT OF REACH OF CHILDREN**

**CAUTION:** • See bottom panel for additional First Aid and Precautions

## DIRECTIONS FOR USE

### USEFUL TIPS:

- Allow 10 to 30 minutes, depending upon the size of the area, for product to take effect.
- This product works best in outdoor areas where there is minimal air movement, such as yards and outdoor campsites.
- Provides a maximum of 4 hours mosquito repellency per mat.
- Original, Earth Scent and Max Life Thermacell refill mats are effective in Thermacell mosquito repellent devices.
- Mats turn from pale blue to white when mosquito repellent has been used up and needs to be replaced.
- Some visible vapor will appear during use; this is normal.
- Use additional mosquito repellents to cover a larger area.
- Altitudes above 4,500 ft can effect product performance.
- Zone Indicator Light requires 4 AA batteries.
- The mosquito repellent and light features operate independently.

### Use Restrictions:

Only for outdoor use as a mosquito repellent. Do not use indoors, in tents or in any enclosed area. Do not insert anything other than Thermacell® mats into the mosquito repellent. Cover or remove all exposed food. Do not leave mosquito repellent unattended or use in windy conditions. Do not expose mosquito repellent or mats to rain. Place mosquito repellent on a flat, stable surface with the grill facing upward. Do not touch the grill; it will be hot after a couple of minutes. Clean with a damp cloth only when the mosquito repellent is cool and inactive. Only Thermacell® mats and cartridges will work in this mosquito repellent.

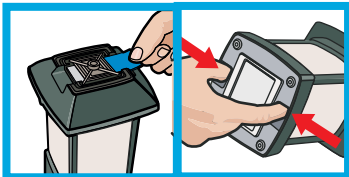
# It is a violation of Federal law to use this product in a manner inconsistent with its labeling.

## TO USE THE LIGHT:

1. Open the battery compartment and insert 4 AA batteries. Close the battery compartment.
2. To use the light, locate the light switch on the base of the lantern. Press the switch towards LO for a soft light or HI for a brighter light. To turn the light off press the ON/OFF switch to the center position.
3. The light may be used with the mosquito repellent or independently.

## TO USE THE MOSQUITO REPELLENT:

1. Remove one Thermacell® mat from wrapper.

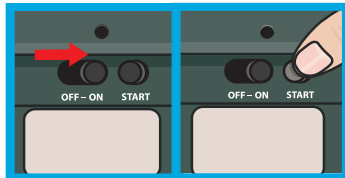


2. Insert the mosquito repellent mat under the grill.
3. Remove top of lantern from base by squeezing the latch tabs and lifting out the top of lantern until it is fully removed from the base.
4. Remove cap from butane cartridge and insert cartridge into lantern. Turn cartridge clockwise until it stops. Make sure cartridge is fully inserted. Return lantern bottom onto base.
5. To activate the mosquito repellent, slide the



'ON/OFF' button to the 'ON' position. The gas will begin to flow.

6. Wait approximately 5 to 10 seconds and then depress the 'START' button three to five times in rapid succession.



7. To verify that the mosquito repellent is activated look at the circular view hole located at the top of the lantern. An orange light will glow. If there is no orange light, check to make sure the lantern is 'ON' and the cartridge is completely screwed into place. Also check the fuel level in the cartridge. If the fuel level in the cartridge is empty or near empty, remove cartridge and replace with a new Thermacell® cartridge. Then once again turn the lantern 'ON' and depress the start button three to five times in rapid succession. Check again to make sure the orange light is glowing.
8. When finished using the lantern slide the 'ON/OFF' button to the 'OFF' position. If using the light, push the light switch to "OFF" to extinguish the lantern light. Allow lantern to cool completely. Lantern is now ready for storage.
9. To replace a used mat, turn off lantern and allow to cool completely. Push the used mat out by inserting a fresh mat.

## TROUBLESHOOTING:

### If you do not see an orange glow through view window

1. Repeat directions "To Turn ON".
2. If there is still no orange light visible, make sure the fuel cartridge is completely screwed into place. Repeat "Turn On" directions. Confirm the orange glow is visible.
3. Check the amount of fuel in the cartridge. If cartridge is empty or near empty, remove cartridge and replace with a new cartridge. Repeat "Turn On" directions. Confirm the orange glow is visible.

### Not sure product is working?

1. Place product upwind for maximum mosquito repellency. Windy conditions can reduce mosquito repellent effectiveness.
2. Check the mosquito repellent mat. Mats turn from pale blue to white when it has been used up. See directions to replace Thermacell Mosquito Repellent Mat.
3. Check the amount of fuel in the cartridge. If cartridge is empty or near empty, remove cartridge and replace with a new Thermacell cartridge. Repeat "Turn On" directions. Confirm the orange glow is visible.

### Still have questions?

Call customer service at 1-866-753-3837 or email [Service@Thermacell.com](mailto:Service@Thermacell.com)