

**THERMACELL**

# PATIO SHIELD

Mosquito Protection  
Torch



**CONCORD  
TORCH**

Active Ingredient:  
d-cis/trans allethrin . . . 21.97%  
Other Ingredients . . . . . 78.03%  
Total . . . . . 100.00%  
Contains petroleum distillates

**KEEP OUT OF REACH OF CHILDREN**

**CAUTION:** See box for additional  
First Aid and Precautions

## DIRECTIONS FOR USE

### USEFUL TIPS:

- Allow 10 to 30 minutes, depending upon the size of the area, for product to take effect.
- This product works best in outdoor areas where there is minimal air movement, such as yards and outdoor campsites.
- Provides a maximum of 4 hours mosquito repellency per mat.
- Original, Earth Scent and Max Life Thermacell refill mats are effective in Thermacell mosquito repellent devices.
- Mats turn from pale blue to white when mosquito repellent has been used up and needs to be replaced.
- Some visible vapor will appear during use; this is normal.
- Use additional mosquito repellents to cover a larger area.
- Altitudes above 4,500 ft can effect product performance.
- The mosquito repellent and light features operate independently.

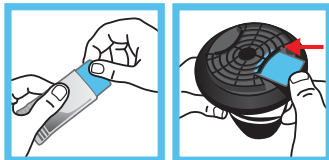
### Use Restrictions:

Only for outdoor use as a mosquito repellent. Do not use indoors, in tents or in any enclosed area. Do not insert anything other than Thermacell® mats into the mosquito repeller. Cover or remove all exposed food. Do not leave mosquito repeller unattended or use in windy conditions. Do not expose mosquito repeller or mats to rain. Place mosquito repeller on a flat, stable surface with the grill facing upward. Do not touch the grill; it will be hot after a couple of minutes. Clean with a damp cloth only when the mosquito repeller is cool and inactive. Only Thermacell® mats and cartridges will work in this mosquito repeller.

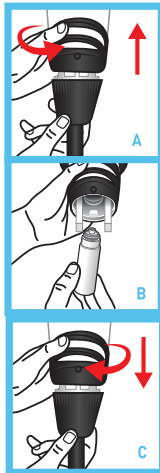
It is a violation of Federal law to use this product in a manner inconsistent with its labeling.

### To Use the Mosquito Repellent:

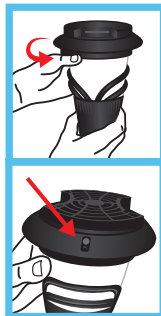
- 1 Insert repellent mat:** Remove cover from torch. Remove one TheraCell® Mosquito Repellent mat from wrapper. Insert mat under grill.



- 2 Insert TheraCell Butane Cartridge:** Rotate Torch globe so that arrow points to "OPEN" and remove globe from base (A). Remove TheraCell cartridge cap and insert cartridge into opening between battery compartments (B). Turn cartridge clockwise until it stops. Replace globe onto base, turning until arrow points to "CLOSE" (C).



- 3 Turn On:** Rotate torch collar to the right until indicator line points to "ON". The gas will start to flow. Wait 5 to 10 seconds then rotate torch collar until indicator line points to "START" and you hear a clicking sound. To verify that the mosquito repellent has been activated, look for an orange glow in the oval view hole located on the torch collar to the right of the "START" button. Place torch on pole or lantern stand.



- 4 Turn Off:** When finished using, rotate the torch collar to the left until the indicator line points to "OFF." Replace protective cover by inserting cover tab into the small oval cutout on torch top. You may replace cover even if grill is still warm. Replacing cover on torch ensures product is shut off and protects torch from rain, dirt and debris. Torch cannot be turned on when protective cover is in place. Leave torch outside or store.



- 5 To Replace a Mat:** When the mat turns white, it is time to replace it. When replacing the mat, make sure indicator line is in the "OFF" position and allow grill to cool. Push the used mat out by inserting a fresh mat.

### Troubleshooting:

If torch does not turn on, verify that there is no orange glow in the view hole. If there is no orange glow, rotate indicator line back to the "ON" position and repeat rotation to the "START" position two to three times in rapid succession. If there is still no orange glow visible in the view hole, make sure the cartridge is completely screwed into place. Also check the amount of fuel in the cartridge. If cartridge is empty or near empty, remove cartridge and replace with a new TheraCell® cartridge. Then repeat step 3.

### To Use the Light:

- Remove lantern from torch pole or lantern stand. Rotate torch base so that arrow points to "OPEN" and pull base from globe. In the globe, insert 4 AAA batteries (not included) in the battery compartments according to the "+ -" signs. The batteries power LED lights and will provide torch light for a maximum of 50 hours.
- Locate the black button on the side of the torch. Push button to turn light on and off. If torch light does not turn on, check batteries.
- Replace base, turning until arrow points to "CLOSE". Place torch on pole or lantern stand.

