

THERMACELL

PATIO SHIELD™

Mosquito Protection
Lantern



**BRISTOL
LANTERN**

Active Ingredient:

d-cis/trans allethrin . . . 21.97%

Other Ingredients 78.03%

Total 100.00%

Contains petroleum distillates

KEEP OUT OF REACH OF CHILDREN

CAUTION • See box for additional
First Aid and Precautions

DIRECTIONS FOR USE

USEFUL TIPS:

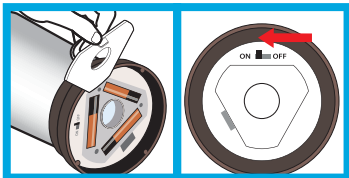
- Allow 10 to 30 minutes, depending upon the size of the area, for product to take effect.
- This product works best in outdoor areas where there is minimal air movement, such as yards and outdoor campsites.
- Provides a maximum of 4 hours mosquito repellency per mat.
- Original, Earth Scent and Max Life Thermacell refill mats are effective in Thermacell mosquito repellent devices.
- Mats turn from pale blue to white when mosquito repellent has been used up and needs to be replaced.
- Some visible vapor will appear during use; this is normal.
- Use additional mosquito repellents to cover a larger area.
- Altitudes above 4,500 ft can effect product performance.
- Zone Indicator Light requires 3 AAA batteries.
- The mosquito repellent and light features operate independently.

Use Restrictions:

Only for outdoor use as a mosquito repellent. Do not use indoors, in tents or in any enclosed area. Do not insert anything other than Thermacell® mats into the mosquito repeller. Cover or remove all exposed food. Do not leave mosquito repeller unattended or use in windy conditions. Do not expose mosquito repeller or mats to rain. Place mosquito repeller on a flat, stable surface with the grill facing upward. Do not touch the grill; it will be hot after a couple of minutes. Clean with a damp cloth only when the mosquito repeller is cool and inactive. Only Thermacell® mats and cartridges will work in this mosquito repeller.

It is a violation of Federal law to use this product in a manner inconsistent with its labeling.

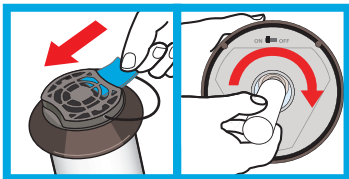
TO USE THE LIGHT:



1. Open the battery compartment and insert 3 AAA batteries. Ensure the batteries are properly aligned with the +/- signs. Close the battery compartment.
2. To use the light, locate the switch under the lantern. Slide the ON/OFF switch to the ON position. To turn the light off slide the switch to the OFF position. Battery life does not affect mosquito repellent functions.

TO USE THE MOSQUITO REPELLENT:

1. Remove one Thermacell® Mosquito Repellent mat from wrapper. Insert the mat under the grill.



2. Remove cap from the butane cartridge and screw cartridge into lantern. Turn cartridge clockwise until it stops. Make sure the cartridge is fully inserted.

3. To activate the mosquito repellent, grasp the lantern collar and rotate collar to the right until the indicator line points to "ON". The gas will begin to flow.



4. Wait approximately 5 to 10 seconds then rotate lantern collar further to the right until the indicator line points to "START". You should hear a clicking noise.

5. To verify that the mosquito repellent is activated look at the oval view hole located on the lantern collar to the right of the "START" button. An orange light will glow. If there is no orange light, rotate indicator line back to the "ON" position and repeat rotation to the "START" position two to three times in rapid succession.

6. If there is still no orange light visible in the view hole, make sure the cartridge is completely screwed into place. Also, check the amount of fuel in the cartridge. If cartridge is empty or near empty, remove cartridge and replace with a new Thermacell® cartridge. Then repeat steps 3-5.

7. When finished using the lantern, rotate the lantern collar to the left until the indicator line points to "OFF". Allow lantern to cool completely before storing.

8. To replace a used mat, make sure indicator line points to "OFF" and allow lantern grill to cool. Push the used mat out by inserting a fresh mat.

TROUBLESHOOTING:

If you do not see an orange glow through view window

1. Repeat directions "To Turn ON".
2. If there is still no orange light visible, make sure the fuel cartridge is completely screwed into place. Repeat "Turn On" directions. Confirm the orange glow is visible.
3. Check the amount of fuel in the cartridge. If cartridge is empty or near empty, remove cartridge and replace with a new cartridge. Repeat "Turn On" directions. Confirm the orange glow is visible.

Not sure product is working?

1. Place product upwind for maximum mosquito repellency. Windy conditions can reduce mosquito repellent effectiveness.
2. Check the mosquito repellent mat. Mats turn from pale blue to white when it has been used up. See directions to replace Thermacell Mosquito Repellent Mat
3. Check the amount of fuel in the cartridge. If cartridge is empty or near empty, remove cartridge and replace with a new Thermacell cartridge. Repeat "Turn On" directions. Confirm the orange glow is visible.

Still have questions?

Call customer service at 1-866-753-3837 or email Service@Thermacell.com.