

GC1-S

User Guide



SwellPro

Visit www.swellpro.com to download the latest version of the manual and firmware.

V1.0 -2021.3

Thank you

The GC1-S is a single-axis waterproof 4K gimbal camera designed for SplashDrone 4 to do aerial photography or fishing. GC1-S has Pro mode and supports RAW photos. ND filters can be added for greater creative freedom. Having the same camera as GC3-S, GC1-S can capture high-quality 4K video and crisp photos with a lighter weight and lower price point.

Using this manual

This document is designed to be printed or viewed on a computer or mobile device.

Tutorial videos

To watch tutorial videos or download the firmware, please visit SwellPro website www.swellpro.com

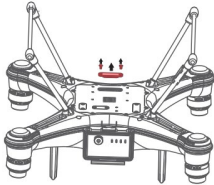
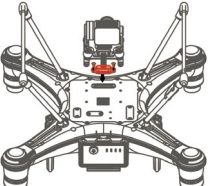
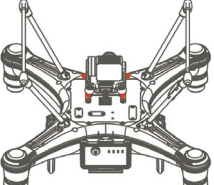
Contents	
Thank you	2
Using this manual	2
Tutorial videos	2
CONTENTS	3
PRECAUTION	4
INSTALLATION	4
Install the Gimbal	4
Install SD Card	5
After Use Casing	5
CONTROL	5
Gimbal Control	5
Camera control	6
APP INTERFACE	6
SPECIFICATION	9

Precaution

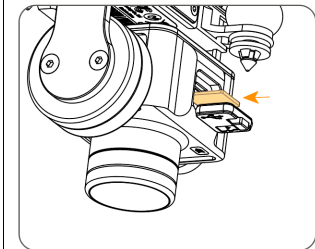
- The GC1-S is a piece of precision electronics with corrosion-resistant materials which allow for use in harsh marine environments. As with any marine equipment, trouble-free and lasting operations depend on proper attention and maintenance of the equipment.
- When taking off or landing, slowly proceed to avoid damage to the gimbal camera which can cause by the huge impact when contacting the surface at high speeds. Drop or crash directly into the water from above will result in significant damage to the drone and the gimbal camera.
- After using in seawater, soak and rinse thoroughly with clean fresh water before the seawater dries out.
- If seawater or other sediments form on the gimbal camera, soak thoroughly with fresh water and clean all sediments on the camera and motor before use. For more information, check the drone's "Maintenance manual".

Installation

Install the Gimbal

	<p>1. Unscrew and take off the gimbal port cover plate using a hex screwdriver. (equipped with SplashDrone 4)</p>
	<p>2. Plug the gimbal connector into the drone's gimbal port and screw it in place with a screwdriver.</p> <p>⚠ Make sure the rubber ring is attached to the gimbal connector before you screw the connector.</p>
	<p>3. Align the holes on the base of the gimbal to the bottom of the drone, screw in to mount the gimbal. Make sure the camera is pointing to the front of the drone.</p>

Install SD Card



1. Open the soft rubber seal on the top of the camera, insert the Mirco SD card in the correct direction, press the Mirco SD card, the "click" sound indicates that the installation is in place.
2. After installing the Mirco SD card, plug the rubber seal back.

⚠ Make sure the rubber seal is tightly plugged in to ensure waterproofing.

- ◆ The GC1-S supports Mirco SD cards with a maximum capacity of 128GB. Since the camera requires fast reading and writing of high-stream video data, please use Mirco SD cards with Class 10 or UHS-1 or above to ensure proper functioning.
- ◆ Do not insert or unplug the Mirco SD card during aircraft shooting, as data files may be damaged or lost.
- ◆ Once you are done recording, stop recording and save the file. If you turn off the power directly before saving the files, the recording file will be lost.

After Use Casing

After using the gimbal camera, you can choose not to take off the gimbal camera and put it directly into the case with the drone. Follow the following steps to make sure the gimbal camera is properly secure after casing.

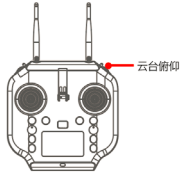
	<ol style="list-style-type: none"> 1. Remove the double-side-glued pad from the gimbal box and paste the pad into the drone's case as showing to the left.
	<ol style="list-style-type: none"> 2. After cleaning and drying the gimbal camera and the aircraft, secure the gimbal camera with the fixing case, then put the aircraft and other parts into the case. The case is secure and ready to be carried or transported.

Control

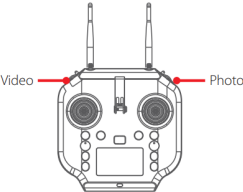
Gimbal Control

Remote controller	Description
-------------------	-------------

Commented [1]: 要加一个详细显示云台控制键的图示

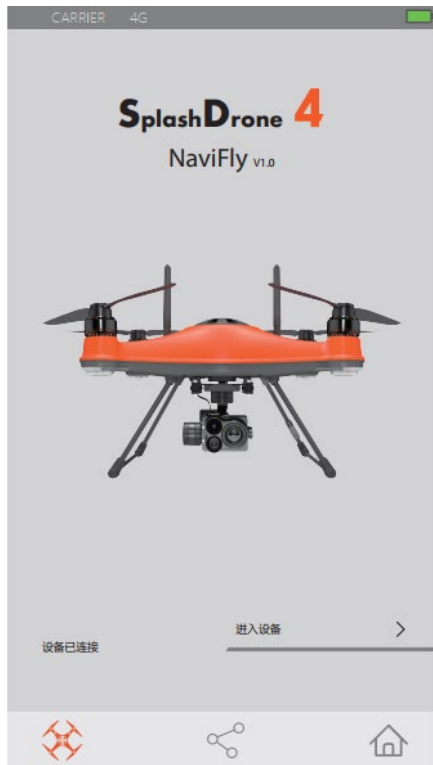
	<p>Tilt: Toggle the right gimbal control as shown to turn the gimbal up or down from 0 to -90 degrees.</p>
---	--

Commented [2]: 把中文提示换成英文

Camera control	
Remote controller	Description
	<p>Video: press once to start recording, press again to stop recording, and save files.</p> <p>Photo: press once to take a picture.</p>

APP Interface

To get into APP's camera interface: Power on the remote controller, then the aircraft. Connect the phone to the remote controller's Wi-Fi hotspot. Then click "Login device".



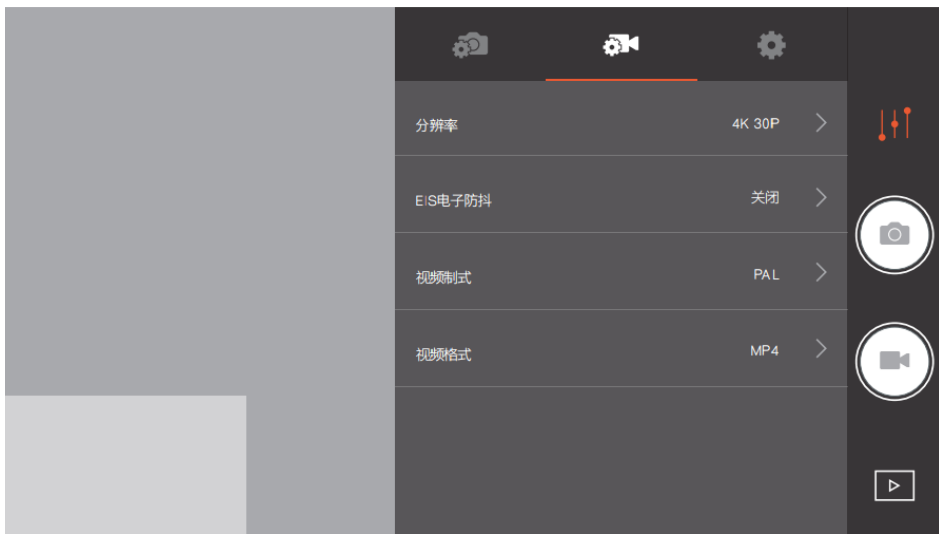
Login device



Camera Interface



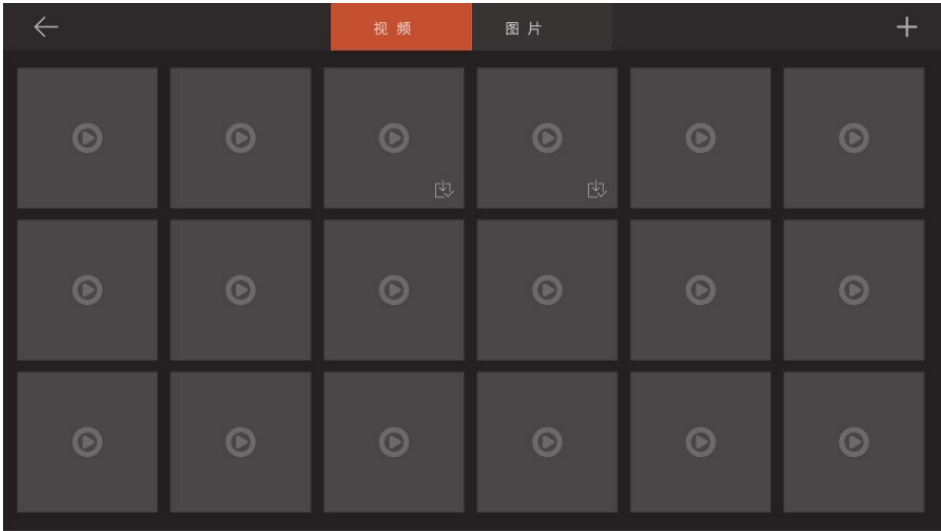
Photo Setting Interface



Video Setting Interface



Camera Setting Interface



Playback Interface

Specification

Gimbal	
Waterproof rating:	IP67

Stabilization:	1-axis (tilt).
Controllable range:	tilt: -90° to 0°
Max control speed:	tilt: 60 °/s
Weight:	About 145g
Size:	71*55*65mm
Camera	
Sensors:	1/2.3" 12M CMOS
Lens:	F4.53mm; f/2.65; FOV: 92.6°
ISO range:	100 - 3200
shutter speed:	16 - 1/16000 s
Photo size:	4:3/16:9 12MP
Burst mode:	3/5/10 shoots
Interval shot:	1/3/5/10 s
Video resolution:	4K : 3840*2160/30P 2.7K : 2704*1520/60P FHD : 1920*1080 30/60/120p HD : 1280*720/240p
Max data stream:	64 MBps
Photo format:	JPEG / DNG (RAW)
Video format:	MP4, MOV
Memory card:	Micro SD card: supports up to 128GB of capacity, write speeds ≥ 60 MB/s, and transfer speed rating of Class 10 or above, or with UHS-1 rating.
Working temperature:	-10°C - 40°C