

Hustler® Parts Manual



HUSTLER®
TURF EQUIPMENT

200 South Ridge Road

Hesston, Kansas

67062



NOTICE OF REQUIREMENT OF SPARK ARRESTER MUFFLER

This equipment may create sparks that can start fires around dry vegetation. California Public Resources Code Section 4442.6 provides that it is unlawful to use or operate an internal combustion engine on any forest-covered, brush-covered, or grass-covered land unless the engine is equipped with a spark arrester maintained in effective working order. A spark arrester is a device constructed of nonflammable materials specifically for the purpose of removing and retaining carbon and other flammable particles over 0.0232 of an inch in size from the exhaust flow of an internal combustion engine that uses hydrocarbon fuels or which is qualified and rated by the United States Forest Service. Other states or federal areas may have similar laws. The Operator Should Contact Local Fire Agencies For Laws or Regulations Relating to Fire Prevention Requirements. **THIS EQUIPMENT DOES NOT HAVE A SPARK ARRESTER AND YOU SHOULD CONTACT YOUR AUTHORIZED DEALER FOR THE PURCHASE OF A SPARK ARRESTER.**

Inspect spark arrester daily; replace every 500 hours or as needed.

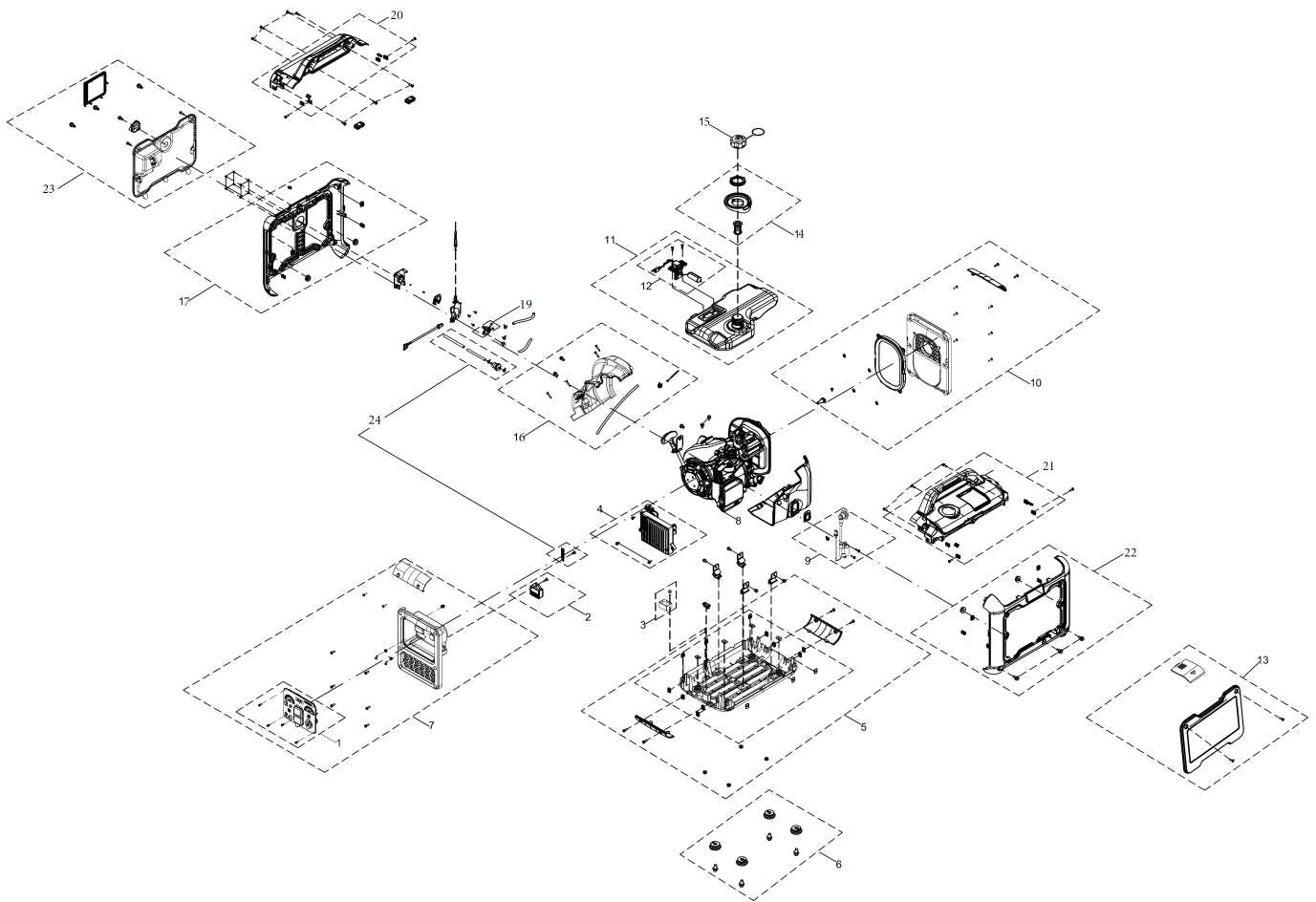
The Engine Owner's Manual provides information regarding the U.S. Environmental Protection Agency (EPA) and the California Emission Control Regulation of emission systems, maintenance and warranty.

Keep Engine Owner's Manual with your unit. Should the Engine Owner's Manual become damaged or illegible, replace immediately. Replacements may be ordered per the information found in the Product Information section of the owner's manual.

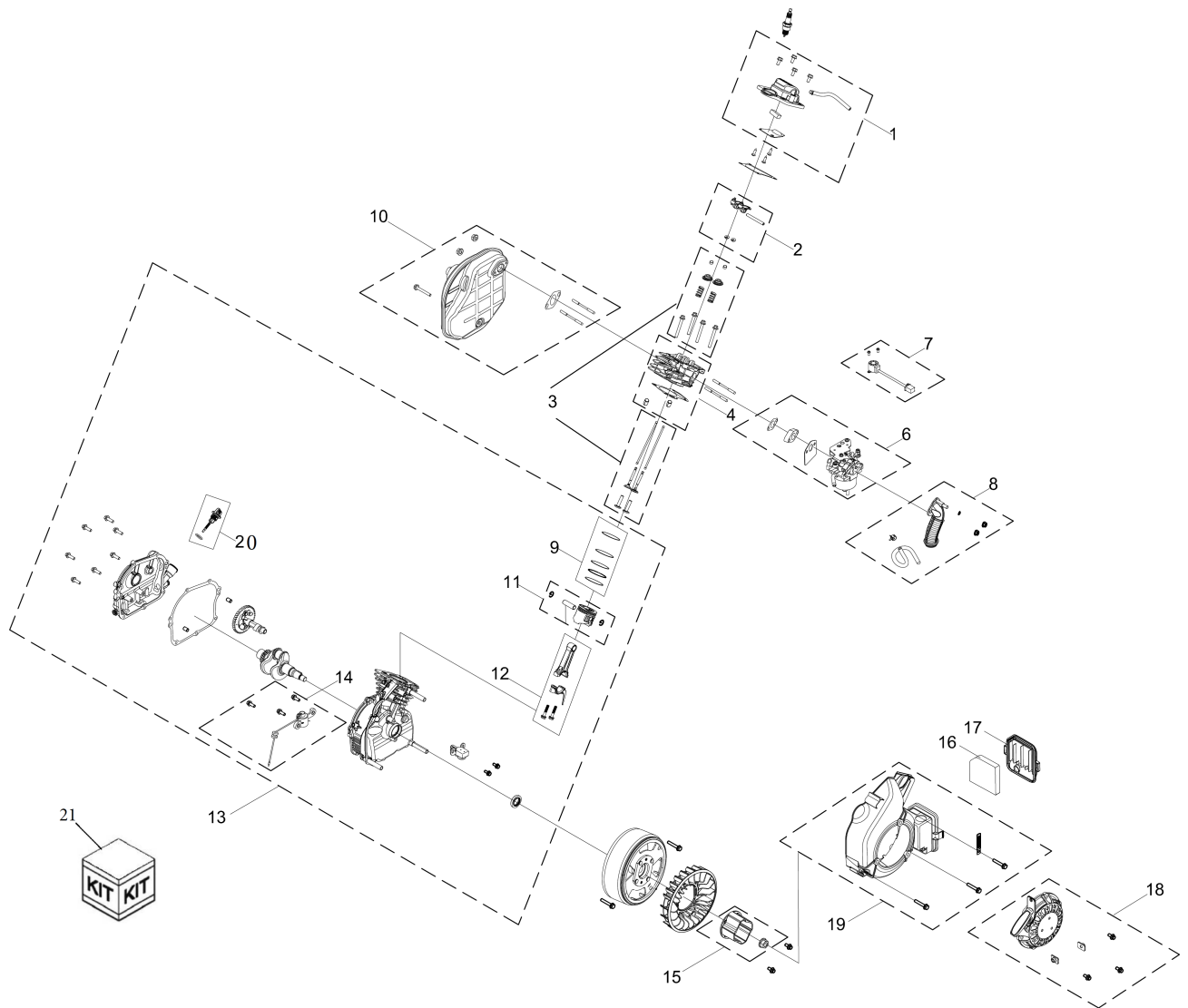
Federal law and California State law prohibit the following acts or the causing thereof:

1. The removal or rendering inoperative by any person other than for purposes of maintenance, repair, replacement, of any device or element of design incorporated into any equipment for the purposes of emissions control prior to or after its sales or delivery to the ultimate purchaser or while it is in use, or
2. The use of the equipment after such device or element of design has been removed or rendered inoperative by any person.

Inverter Assembly	1
Engine Assembly	2



Item	Part No.	Qty	Name
1	N/A	1	Control Panel Kit
2	7112905	1	IGNITION MODULE KIT
3	7112904	1	RECTIFIER KIT
4	7112906	1	INVERTOR KIT
5	N/A	1	Switch Box Base Kit
6	N/A	1	FOOT KIT
7	N/A	1	Invertor Panel Kit
8	N/A	1	Engine Assembly
9	7112910	1	IGNITION COIL ASSY
10	N/A	1	Service Window Kit
11	N/A	1	Fuel Tank Assy
12	7112943	1	FUEL GAUGE KIT
13	N/A	1	Service Window Kit, RT Side
14	N/A	1	Fuel Tank Gasket Assy
15	7112917	1	FUEL CAP
16	N/A	1	Engine Cover Kit
17	N/A	1	Cover Kit, Left Side
19	7112921	1	FUEL SWITCH
20	N/A	1	Handle Kit Left
21	N/A	1	Handle Kit Right
22	N/A	1	Cover Kit Right side
23	N/A	1	Side Cover Kit W/Choke Knob
24	7112919	1	FUEL FILTER/HOSE KIT



Item	Part No.	Qty	Name
1	7112947	1	VALVE COVER KIT
2	N/A	1	Rocker Arm Kit
3	N/A	1	Valve Kit
4	N/A	1	Cylinder Head Kit
5	N/A	1	Stud Kit
6	7112952	1	CARBURETOR KIT
7	7112953	1	CHOKE KIT
8	7112954	1	CARBURETOR INLET KIT
9	N/A	1	Piston Ring Kit
10	N/A	1	Muffler Kit
11	N/A	1	Piston Kit
12	N/A	1	Connecting Rod Kit
13	N/A	1	Short Block Kit
14	7112961	1	OIL SENSOR KIT
15	N/A	1	Starter Cup Kit
16	7112963	1	AIR FILTER ELEMENT
17	N/A	1	Air Filter Cover
18	7112976	1	RECOIL STARTER
19	N/A	1	Recoil Starter Housing
20	N/A	1	Dip Stick
21	7112978	1	GASKET KIT