

***Excel Two Bag Catcher
48"/54"/60" Decks
Operator's Manual***

EXCEL
INDUSTRIES

200 South Ridge Road • Hesston, Kansas • 67062

Table of Contents

General Information	1-1
To The New Owner	1-1
Using This Manual	1-1
Warranty Registration	1-1
Parts and Service	1-1
Safety Precautions	2-1
Assembly Instruction	3-1
Packing List - Catcher	3-1
Deck Adapter Kits	3-1
Mower Deck Preparation	3-2
Mower Preparation	3-5
Final Connection	3-7
Operation	4-1
Vacuum Pickup and Collection	4-1
Unloading the Catcher	4-1
Converting To Side Discharge Mode	4-2
Maintenance & Storage	5-1
Blower Housing and Transfer Tube Maintenance	5-1
Blower Drive Belt	5-2
Blower Impeller	5-2
Storage	5-2
Parts List	6-1

GENERAL INFORMATION

To The New Owner

The purpose of this manual is to assist owners and operators in maintaining and operating the Excel Two Bag Catcher. Please read it carefully; information and instructions furnished can help you achieve years of dependable performance.

Using This Manual

General operation, adjustment and maintenance guidance is outlined for both the experienced and novice Excel user. Operating conditions vary considerably and cannot all be addressed individually. Through experience, however, operators should find no difficulty in developing good operating skills suitable to most conditions.

Directions used in this manual, for example RIGHT or LEFT, refer to directions when seated on mower facing forward, unless otherwise stated.

Photographs and illustrations used were current at the time of printing, but subsequent production changes may cause your machine to vary slightly in detail. Excel Industries, Inc. reserves the right to redesign and change the machine as deemed necessary, without notification. If a change has been made to your machine which is not reflected in this owner's manual, or the parts manual, see your Excel dealer for current information and parts.

Warranty Registration

The Delivery and Warranty Registration form must be completed and signed to validate your warranty protection. As the new equipment owner, you are expected to see that the card is completed and forwarded to Excel Industries, Inc. at time of delivery.

Be sure to register the mower plus each attachment that displays a model and serial identification number plate with Excel Industries, Inc.

IMPORTANT: Any unauthorized modification, alteration, or use of non-approved attachments voids the warranty and releases Excel Industries, Inc. from any liability arising from subsequent use of this equipment.

Parts and Service

Use original Excel replacement parts only. These parts are available through your local Excel dealer. To obtain prompt, efficient service, always provide the following information when ordering parts:

1. Correct part description and number, as given in the parts manual supplied with your owner's packet.
2. Correct model number.

All warranty repair and service must be handled through an authorized Excel dealer. Arrangements should be made through your local service center.

SAFETY PRECAUTIONS



This safety alert symbol is used to call attention to a message intended to provide a reasonable degree of **PERSONAL SAFETY** for operators and other persons during the normal operation and servicing of this equipment.

▲ DANGER ▲	– denotes immediate hazards which WILL result in severe personal injury or death.
---------------------------------------	--

▲ WARNING ▲	– denotes a hazard or unsafe practice which COULD result in severe personal injury or death.
--	---

This manual uses two other words to highlight information:

- A. **IMPORTANT** – calls attention to special mechanical information.
- B. **NOTE** – emphasizes general information worthy of special attention.

The **owner's responsibilities** include, but are not limited to,

- making certain that the operators and mechanics read and understand this manual and all decals before operating this machine.
- making certain that before the operators and mechanics are allowed to operate or maintain this machine, they **must** be familiar with its safe operation, operator controls, and decals.
- ensuring that the operators and mechanics know they are responsible for their own safety as well as the safety of other persons within the vicinity. **Remember**, the operator is responsible for accidents or hazards occurring to other people or their property.

Improper use, adjustment, or maintenance by the operator, mechanic or owner can result in injury or death. Reduce the potential for injuries by following these safety instructions. Pay close attention to the safety alert symbol “▲” and the instructions that follow it. **Failure to comply with these instructions may result in personal injury or death.**

Incorrect usage of this equipment may result in severe injury or death. Personnel operating and maintaining it should be trained in its proper use. They should read this manual completely and thoroughly before attempting to set-up, operate, adjust, or service this equipment.

- ▲ Never let children or untrained people operate or service the equipment. Local regulations may restrict the age of the operator.
- ▲ Evaluate the terrain to determine what accessories and attachments are needed to properly and safely perform the job. Only use accessories and attachments approved by the manufacturer.
- ▲ Always stop on level ground, disengage deck clutch, place steering control levers in the park brake position, stop mower's engine and remove ignition key before leaving operator's seat for any reason including emptying the catcher bags or unclogging the chute.
- ▲ Always be aware of any obstructions, especially small children, when backing or unloading the bags.
- ▲ Always keep safety shields and covers in place, except for servicing.
- ▲ Never work on mower deck when the mower's engine is running.
- ▲ Never operate machine with bagger lid in the raised position except for unloading.
- ▲ Never attempt high speed maneuvering in crowded or congested areas.
- ▲ Always operate with complete catcher system, mulching system or side discharge chute in place and in the lowest position.
- ▲ Always keep clear of the mower blades and attachments during their operation.
- ▲ Turn off blades when not mowing.
- ▲ Stop the engine before removing the grass catcher or unclogging the discharge chute. Never clear the discharge chute with the engine running. Turn off the engine and be sure the blades have stopped before cleaning. Use a stick to clear a plugged discharge area. **Never use your hand!**
- ▲ **Clean flammable material from machine. Prevent fires by keeping engine compartment, exhaust area, battery, fuel line, fuel tank and operator's station clean of accumulated trash, grass clippings, and other debris. Always clean up spilled fuel and oil.**
- ▲ Grass collection system components are subject to wear, damage and deterioration, which could expose moving parts or allow objects to be thrown. Frequently check components and replace with manufacturer's recommended parts when necessary.

- ▲ Never direct discharged material toward anyone. Avoid discharging material against a wall or obstruction. Material may ricochet back towards the operator.

- ▲ Always disengage the blades and wait for them to stop before crossing gravel drives, walks or roads.

Part Number 601624

WARNING: Thrown objects!



- Never operate the mower deck with side deflector damaged, altered, removed or in raised position, except when the entire grass catcher attachment or mulching system is being used.

Part Number 601837



DANGER: Rotating blades, pulleys & belts

- Keep hands, feet and clothing away.
- Keep shields or covers in place while machine is in operation.

Part Number 602758



- Read Operator's Manual before attempting to operate this machine.
- Wear ear protection, eye protection and safety shoes when operating this equipment

Part Number 602757



DANGER: Rotating impeller

- Stop engine, remove ignition key.
- Engage park brake.
- Use a probe to clear debris from blower assembly. Remove blower chute to clear debris from chute.
- Never engage mower deck unless the entire grass catcher attachment is properly installed.

Part Number 602635



Symbol A

DANGER: Rotating pulleys & belts

- Keep hands, feet and clothing away.
- Keep shields or covers in place while machine is in operation.

Symbol C

WARNING: Pinch Point

- Keep hands and feet clear.

Symbol B

DANGER: Rotating impeller

- Stop engine, remove ignition key.
- Engage park brake.
- Use a probe to clear debris from blower assembly. Remove blower chute to clear debris from chute.
- Never engage mower deck unless the entire grass catcher attachment is properly installed.

Part Number 602633



- Wear ear protection when operating this equipment

ASSEMBLY INSTRUCTION

These instructions apply to the assembly of the Excel Two Bag Catcher on the following mowers:

- FasTrak® 48/54/60
- FasTrak® SD 48/54/60
- STOUT™ 48/54/60
- STOUT™ MP 48/54/60

It is intended that these units be installed by trained Excel service personnel. If additional assistance is required, contact the Excel Customer Service Department.

Directions given in these instructions, for example left and right, refer to direction while seated on the mower.

Before proceeding, read through the following instructions to familiarize yourself, while at the same time identify and inventory kit parts supplied.

Unpack and inspect all parts. Notify carrier of any shipping damages immediately.

Packing List - Catcher

PART NO.	DESCRIPTION	QTY.
120872	RS CATCHER MOUNT	1
120873	LS CATCHER MOUNT	1
120876	MOUNT SUPPORT	1
605519	2-BAG CATCHER FRAME	1
606940	2-BAG CATCHER LID	1
602671	BLOWER CHUTE	1
606941	CATCHER INLET	1
N/A	CATCHER BAG ASSEMBLY	2
N/A	WEIGHT ASSEMBLY	1
N/A	BLOWER/PULLEY ASSEMBLY	1
607283	FLEX TUBE 6.00" X 31"	1
121073	TENSION ROD MOUNT	2
121283	TENSION ROD	2
603340	UB .375-16 X 2.00 X 4.00 SQ	2
604803	CE .375 X 2.00 W/ BALE	2
710087	CS .312-18 X 2.50 HX G5	2
036244	CS .375-16 X 1.00 HX G5	2
052860	CS .375-16 X 1.25 HX G5 ZN	6
056036	CS .375-16 X 2.25 HX G5	4
089938	CS .500-13 X 4.00 HX G8 Z	2
767954	FW .379 X .813 X .063	28
767962	FW .531 X 1.063 X .090 SAE	4
058776	NT .312-18 HX ZY NL	2
054502	NT .375-16 HX G5 ZN	10
086660	NT .375-16 HX ZY NL	2
023317	NT .500-13 UNT LK G8 ZN	2
055822	.375-16 X .750 HX G5	4
125213	LID PROP KIT	1

Deck Adapter Kits

Adapter kit, p/n 121074, must be used when mounting the Two Bag Catcher to a 48" deck. The following parts are included with this kit.

PART NO.	DESCRIPTION	QTY.
121494	FRONT LS BAFFLE	1
121495	FRONT RS BAFFLE	1
025395	CB .375-16 X 1.00 G5 ZN	7
767954	FW .379 X .813 X .063	11
086660	NT .375-16 HX ZY NL	11
037887	CB .312-18 X 1.00 FULL ZN	1
079210	FW .344 X 1.00 X .06 ZN	1
604251	NT .312-18 HX NL JAM G2 ZN	1
121198	BLOWER MOUNT	1
604661	PULLEY SPACER	1
601481	DOUBLE PULLEY	1
752386	CW .550 X 2.25 X .204	1
008573	CS .50-13 X 2.50 HX G5	1
604933	BELT, A 73.0 EL	1
121408	CATCHER GUARD	1
601069	CN .312-18 X .20 MAX THK	3
768523	FW .343 X .687 X .051/.080H	4
036236	CS .312-18 X 1.00 HX G5	4
121678	PULLEY COVER	1
121700	DOUBLE PULLEY COVER	1
768515	FW .281 X .625 X .066	2
024927	NT .250-20 HX G5 ZN	1
064329	CS .250-20 X .625 HX G5	1
045765	FW 1.030 X 1.500 X .134	1

Adapter kit, p/n 121075, must be used when mounting the Two Bag Catcher to a 54" deck. The following parts are included with this kit.

PART NO.	DESCRIPTION	QTY.
121492	FRONT LS BAFFLE	1
121493	FRONT RS BAFFLE	1
025395	CB .375-16 X 1.00 G5 ZN	7
767954	FW .379 X .813 X .063	11
086660	NT .375-16 HX ZY NL	11
037887	CB .312-18 X 1.00 FULL ZN	1
079210	FW .344 X 1.00 X .06 ZN	1
604251	NT .312-18 HX NL JAM G2 ZN	1
121648	ADAPTOR MOUNT	1
604661	PULLEY SPACER	1
601480	DOUBLE PULLEY	1

752386	CW .550 X 2.25 X .204	1
008573	CS .50-13 X 2.50 HX G5	1
604169	BELT A-SEC 76" EL	1
121410	CATCHER GUARD	1
601069	CN .312-18 X .20 MAX THK	3
768523	FW .343 X .687 X .051/.080H	4
036236	CS .312-18 X 1.00 HX G5	4
121677	PULLEY COVER	1
121699	DOUBLE PULLEY COVER	1
768515	FW .281 X .625 X .066	2
024927	NT .250-20 HX G5 ZN	1
064329	CS .250-20 X .625 HX G5	1
121818	54" CORNER SUPPORT	1
034280	CS .312-18 X .750 HX G5	4
045765	FW 1.030 X 1.500 X .134	1

Adapter kit, p/n 121076, must be used when mounting the Two Bag Catcher to a 60" deck. The following parts are included with this kit.

PART NO.	DESCRIPTION	QTY.
121490	LS FRONT BAFFLE	1
121491	RS FRONT BAFFLE	1
121203	ADAPTER MOUNT	1
025395	CB .375-16 X 1.00 G5 ZN	7
767954	FW .379 X .813 X .063	11
086660	NT .375-16 HX ZY NL	11
037887	CB .312-18 X 1.00 FULL ZN	1
079210	FW .344 X 1.00 X .06 ZN	1
604251	NT .312-18 HX NL JAM G2 ZN	1
768523	FW .343 X .687 X .051/.080H	8
604661	PULLEY SPACER	1
601479	DOUBLE PULLEY	1
752386	CW .550 X 2.25 X .204	1
008573	CS .50-13 X 2.50 HX G5	1
604935	BELT, A 107.0" EL	1
121412	CATCHER GUARD	1
601069	CN .312-18 X .20 MAX THK	3
036236	CS .312-18 X 1.00 HX G5	4
121673	PULLEY COVER	1
121698	DOUBLE PULLEY COVER	1
768515	FW .281 X .625 X .066	2
024927	NT .250-20 HX G5 ZN	1
064329	CS .250-20 X .625 HX G5	1
121816	60" CORNER SUPPORT	1
034280	CS .312-18 X .750 HX G5	4
045765	FW 1.030 X 1.500 X .134	1

Mower Deck Preparation

Refer to illustrated parts listings when assembling the unit.

1. Park the mower on a flat surface.
 - Place the deck clutch switch in the "OFF" (disengaged) position.
 - Place the steering control levers in the park brake position.
 - Shut off the engine and remove the key from the ignition switch.
 - Disconnect the negative battery cable.



WARNING

Use only appropriate vehicle stands, with a minimum weight rating of 2000 pounds to block the unit up. Use in pairs only. Follow the instructions supplied with the vehicle stands.

2. Raise the front of the mower and block it up high enough to allow the baffles to be installed from the underneath side of the deck. Chock the drive wheels to prevent the mower from moving.



WARNING

Use caution when working under the deck as mower blades are sharp and can cut.

3. Locate the four pilot holes shown in Figure 3-1. Enlarge the pilot holes using a .406" diameter drill bit.

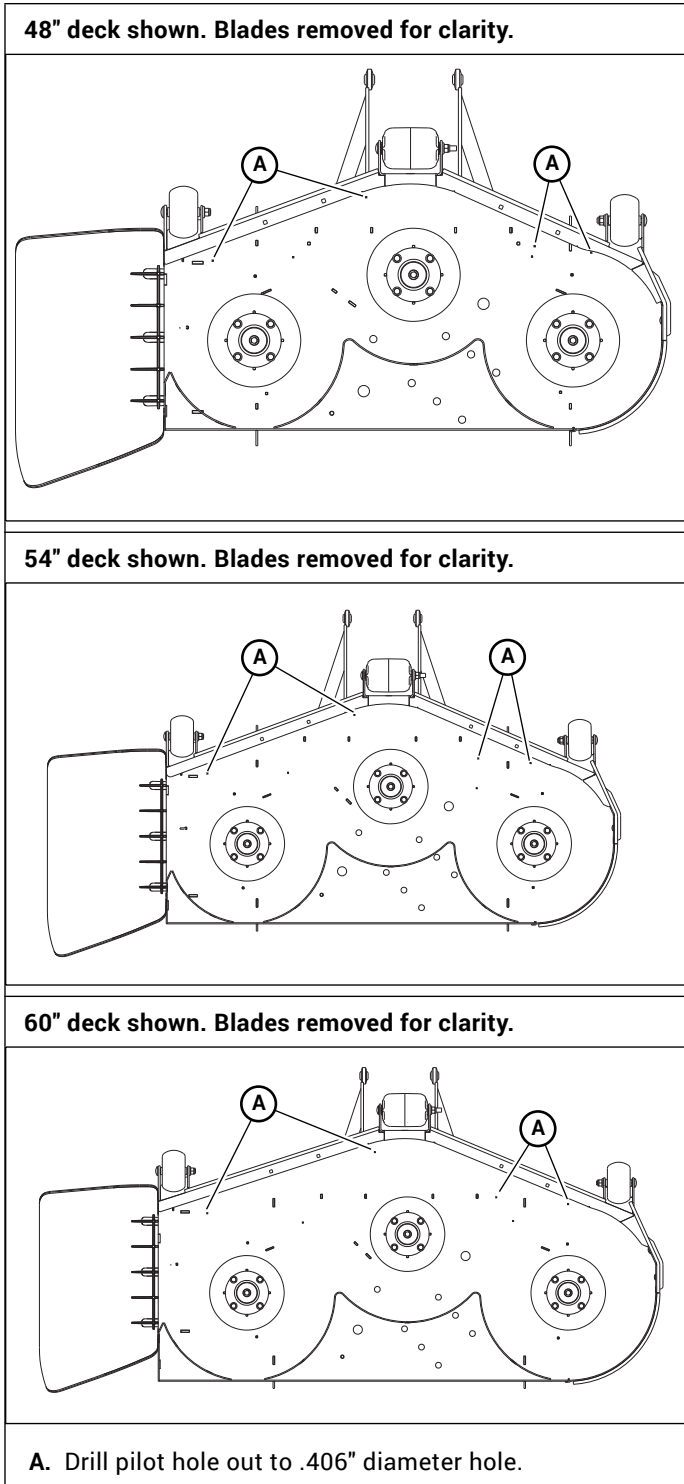


Figure 3-1

4. Remove the rear bolt, nut, and flat washer from the left bumper. Figure 3-2
5. Attach the front left baffle to the top of the deck. Using the hardware shown, attach the baffle to the left bumper. Figure 3-2
6. Attach the front right baffle to the top and side of the deck as shown. Figure 3-2
7. Attach the two baffles together. Figure 3-2

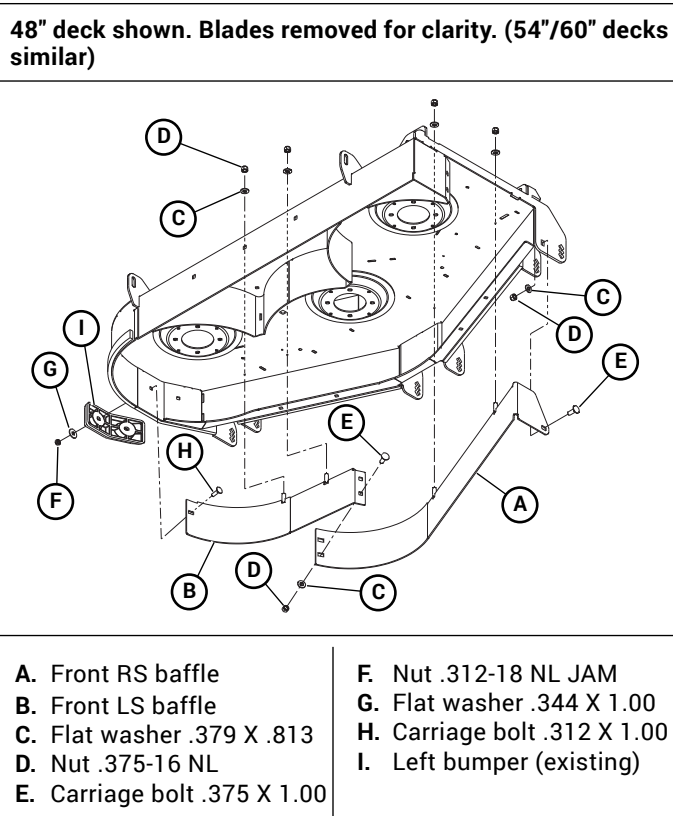


Figure 3-2

8. Rotate the blades slowly by hand, to make sure that they are not hitting the baffles. Adjust the baffles to prevent contact, if necessary, before proceeding.
 9. **54"/60" decks only** – Install the corner support.
 10. Raise the front of the mower and remove the jack stands.
 11. Lower the front of the mower and remove the wheel chocks.
 12. Remove the right side pulley cover, torsion spring, and discharge chute. Retain these parts as they will be re-installed when the catcher is removed. Figure 3-3
- The pin and nut will be used to attach the catcher's blower mount to the deck. Figure 3-4

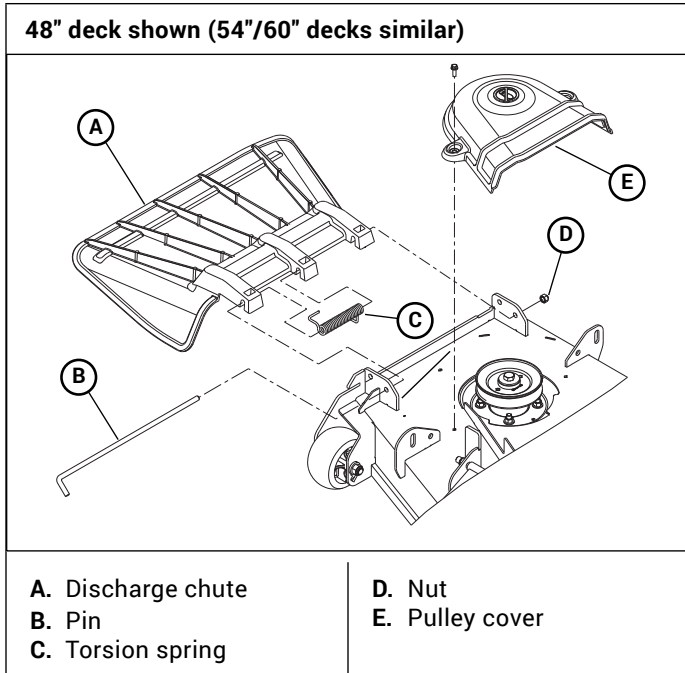


Figure 3-3

13. Release the deck drive belt tension. Remove the existing spindle bolt and pulley from the right side blade spindle. Replace the pulley with the double pulley and spacer. Place the new cup washer between the head of the new bolt and the drive pulley. Thread the cup washer and bolt assembly into the right side spindle shaft. Torque bolt to 70 ft-lbs (95 N•m). Figure 3-4

14. Assemble the blower mount to the deck. Figure 3-4

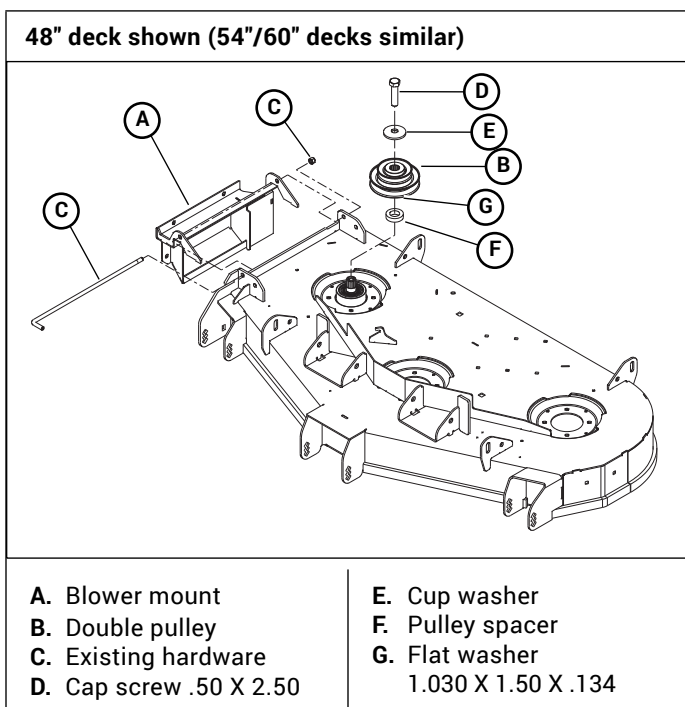


Figure 3-4

15. Attach the blower assembly to the blower mount. Figure 3-5

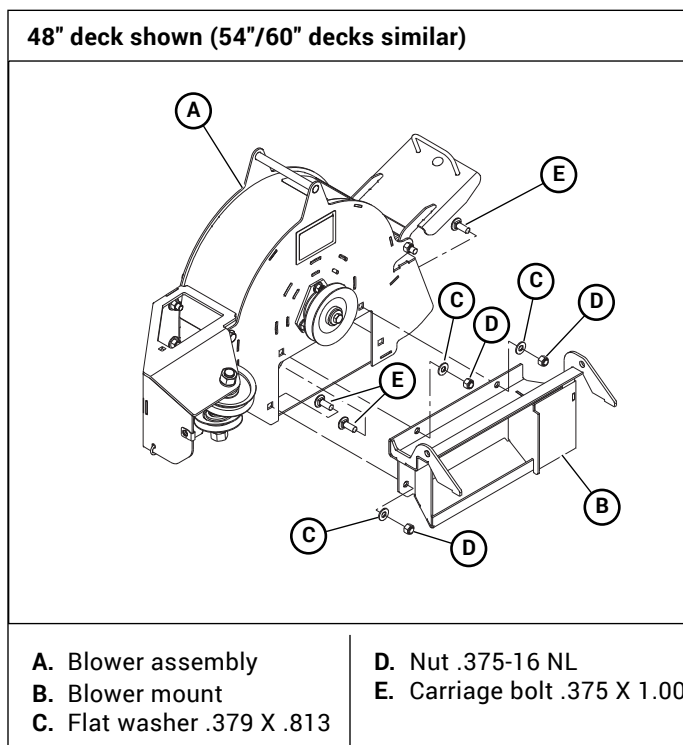


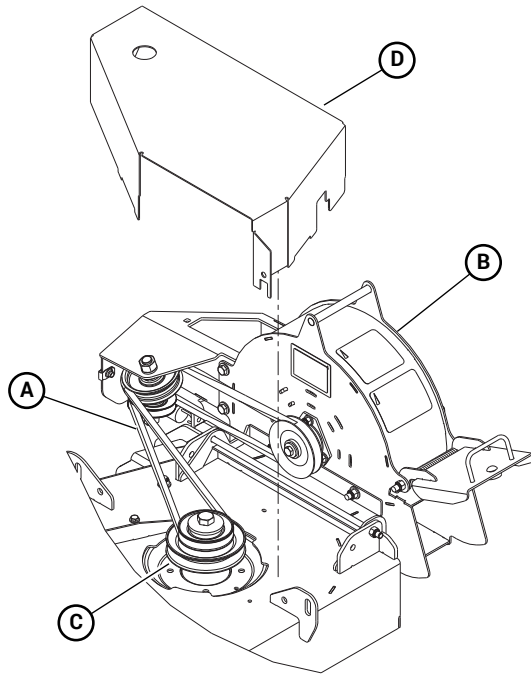
Figure 3-5

16. Place the deck drive belt around the lower pulley of the double pulley. Confirm that the belt is properly routed and seated on all pulleys and idlers.
17. Install and route the blower belt around the blower pulleys and the upper pulley on the double pulley. This belt is self-tensioning. Figure 3-6
18. Attach the three clip nuts to the catcher guard. Figure 3-7
19. Attach the catcher guard to the deck. Figure 3-7
20. Attach the pulley cover to the catcher guard and the blower housing. Figure 3-7

WARNING

Do not operate deck without discharge chute or complete catcher system in place.

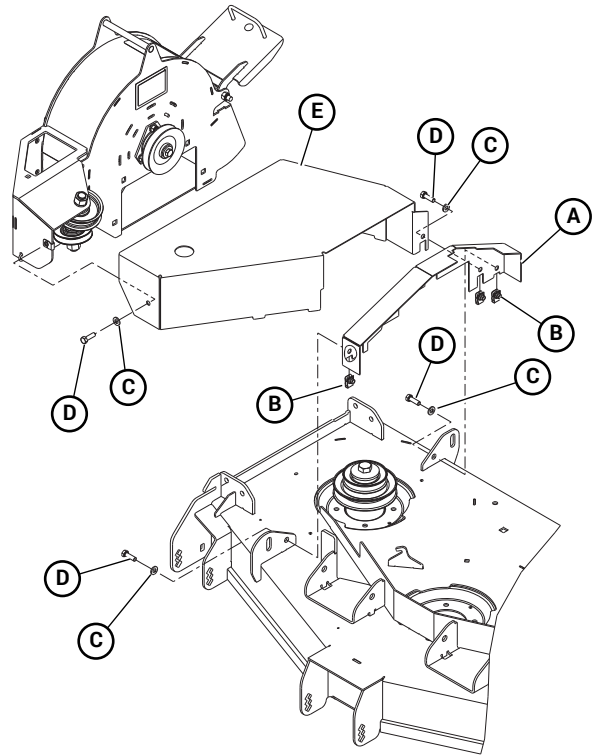
48" deck shown (54"/60" decks similar)



- | | |
|--------------------|------------------|
| A. Blower belt | C. Double pulley |
| B. Blower assembly | D. Pulley cover |

Figure 3-6

48" deck shown (54"/60" decks similar)



- | | |
|-------------------------|-------------------|
| A. Catcher guard | D. CS .312 X 1.00 |
| B. Clip nut .312 X .20 | E. Pulley cover |
| C. Flat washer .343 SAE | |

Figure 3-7

Mower Preparation

Refer to the illustrated parts listings when assembling the unit.

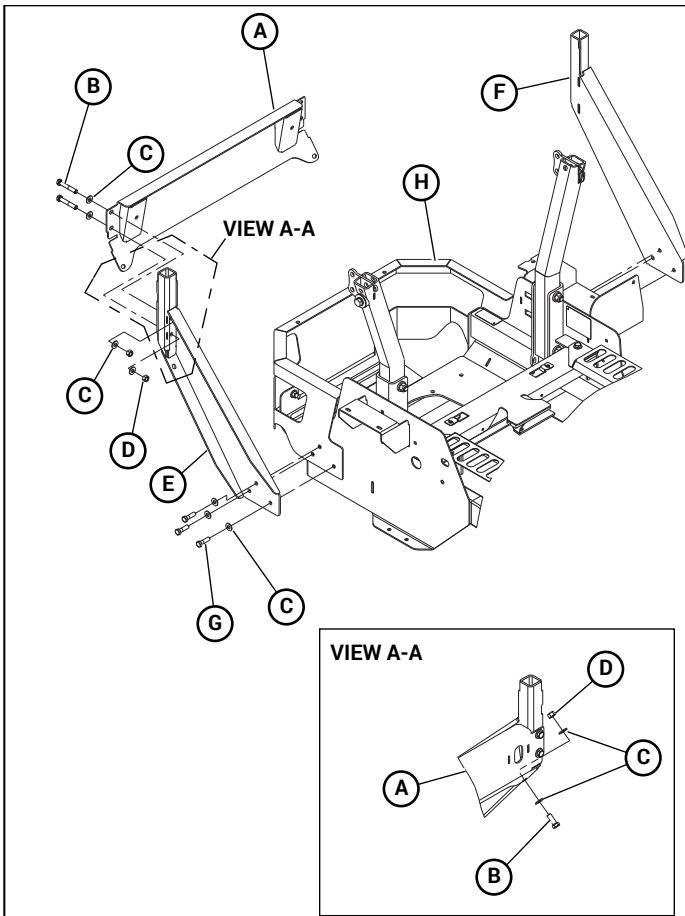


Allow engine and muffler to cool before assembling the unit to the mower.

1. Remove the three cap screws that attach one side of the rear bumper to the mower frame. Figure 3-8
2. Attach one of the catcher mounts to the rear bumper and the mower frame using the hardware shown. Do not tighten the cap screws. Figure 3-8
3. Repeat steps 1 and 2 for the opposite side.
4. Attach the mount support as shown. Figure 3-8
5. Remove the upper cap screw, flat washers, and nut from the left ROPS mount bracket. Figure 3-9
6. Attach one of the tension rod mounts to the left ROPS mount bracket using the hardware shown. Torque to 73 ft-lbs (99 N·m). Figure 3-9
7. Repeat steps 5 and 6 for the right side.
8. Assemble the tension rods to the tension rod mounts and the catcher mounts as shown. Tighten nuts on

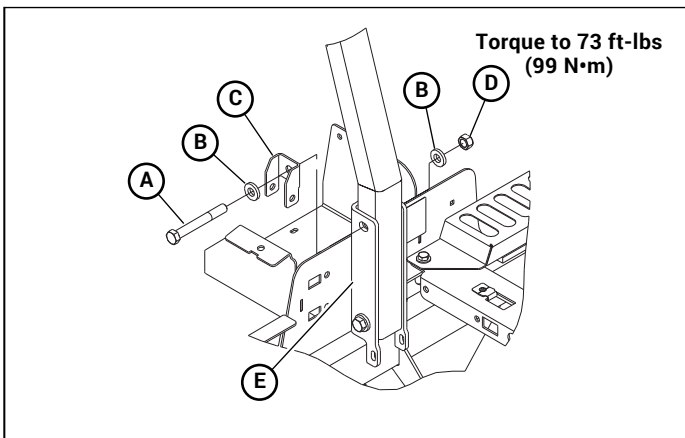
tension rods until the back side of the mount support is vertical. Do not over tension. Figure 3-10

9. Tighten all cap screws.
 10. Slide the bag frame posts into the catcher mount openings. Figure 3-11
 11. Attach the catcher lid to the bag frame using the hardware shown. Figure 3-11
 12. Open the catcher lid and insert the catcher inlet tube through the opening in the catcher lid. Make sure to position the wall of the catcher lid between the two ridges on the back side of the inlet tube. The inlet tube must be secured by these two ridges to prevent the tube from sliding back into the catcher lid. Figure 3-12
- Position the inlet tube so that it is angled toward the blower discharge opening on the deck.
- NOTE:** The snap fastener does not need to be removed from the inlet tube. The inlet tube will fit through the catcher lid opening with the snap fastener still attached.



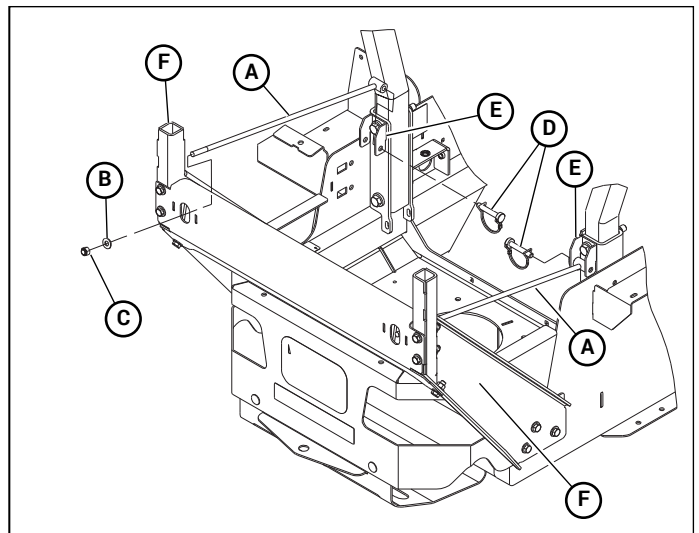
- | | |
|----------------------------|---------------------------|
| A. Mount support | E. Catcher mount RH |
| B. Cap screw .375 X 2.250 | F. Catcher mount LH |
| C. Flat washer .379 X .813 | G. Cap screw .375 x 1.250 |
| D. Nut .375-16 | H. Rear bumper |

Figure 3-8



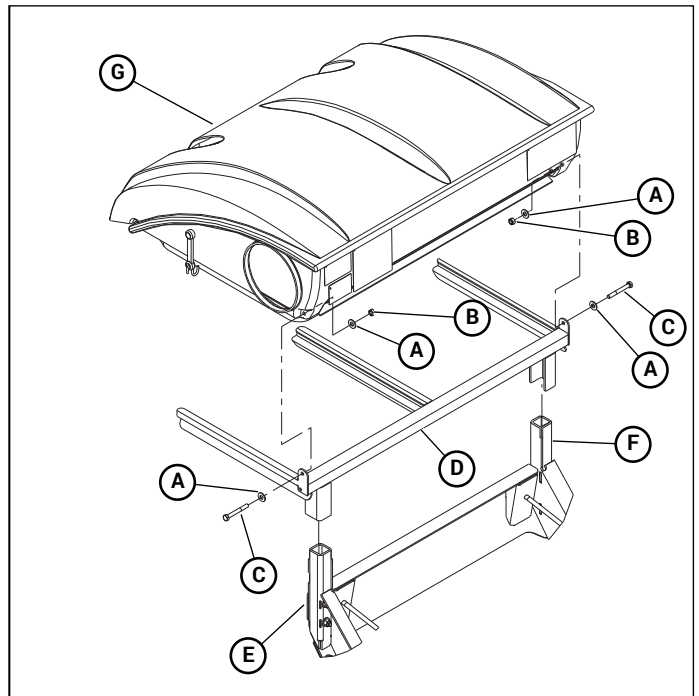
- | | |
|----------------------------|-----------------------|
| A. Cap screw .50 X 4.00 G5 | D. Nut .50-13 |
| B. Flat washer .531 SAE | E. ROPS mount bracket |
| C. Tension rod mount | |

Figure 3-9



- | | |
|----------------------------|---------------------------|
| A. Tension rod | D. Clevis pin .375 x 2.25 |
| B. Flat washer .379 X .813 | E. Tension rod mount |
| C. Nut .375-16 | F. Catcher mount |

Figure 3-10



- | | |
|----------------------------|---------------------|
| A. Flat washer .379 X .813 | E. Catcher mount RH |
| B. Nut .312-18 NL | F. Catcher mount LH |
| C. Cap screw .312 X 2.50 | G. Catcher lid |
| D. Bag frame | |

Figure 3-11

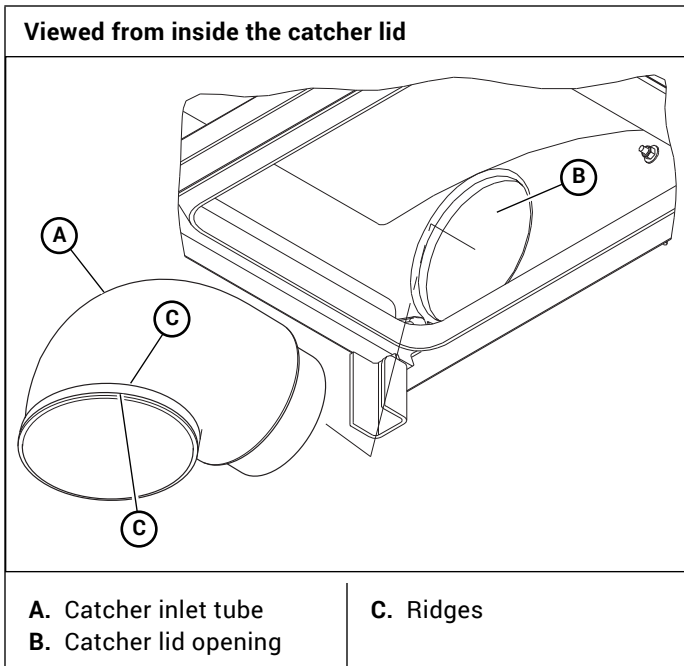


Figure 3-12

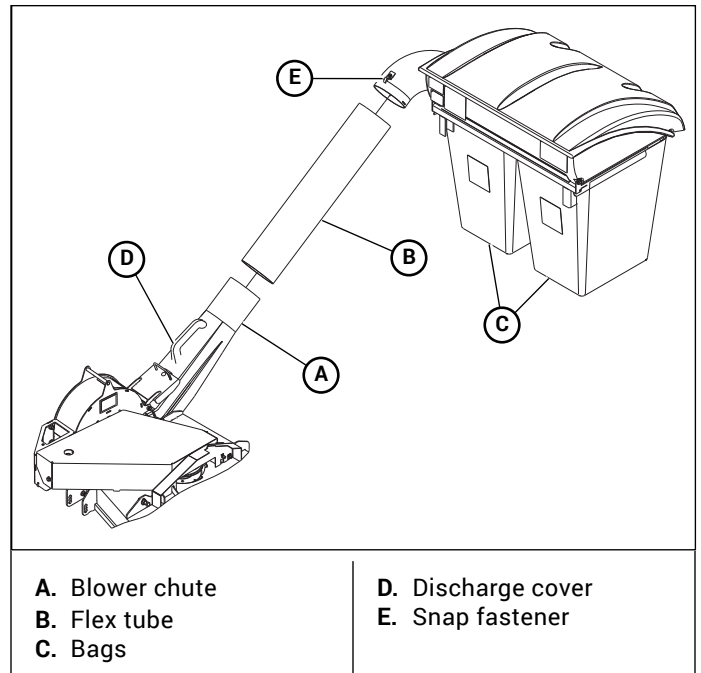


Figure 3-13

Final Connection

1. Raise the discharge cover on the blower housing and insert the blower chute. Insert the tab of the blower housing into the slot of the blower chute and lower the discharge cover. Figure 3-13
2. Slide one end of the flex tube onto the blower chute tube. Figure 3-13
3. Slide the other end of the flex tube over the catcher lid inlet tube and secure in place with the snap fastener. Figure 3-13
4. Place the bags in the catcher assembly, close the hood and fasten in place using the elastic latch. Figure 3-13
5. Attach the weight assembly to the front of the mower using the u-bolts on both sides of the mower frame. Figure 3-14
6. Reconnect the negative battery cable.

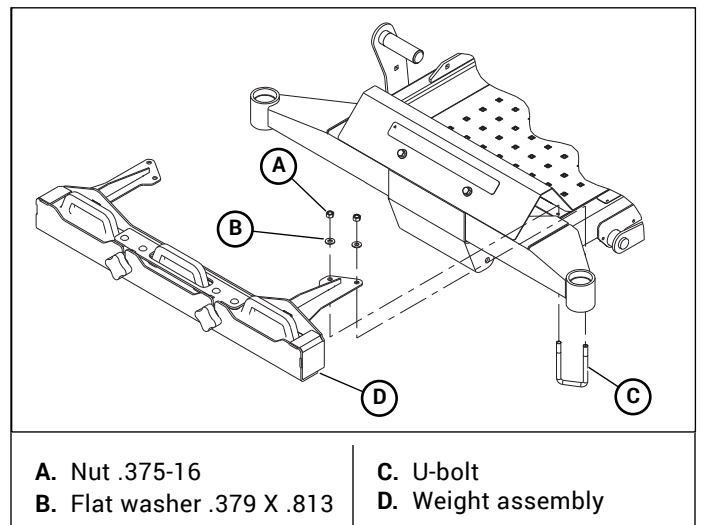


Figure 3-14

OPERATION

Vacuum Pickup and Collection

Follow normal mower start-up and operating procedures as outlined in the mower operator's manual. The catcher will operate when the mower's deck clutch switch is engaged. To stop the catcher, return the deck clutch switch to the disengaged position.

Proceed to mow in the normal manner and occasionally glance at the flex tube. When the bags are full the speed of debris through the tube will decrease. When the bags are filled, move the deck clutch switch to the disengaged position and drive the machine to the unloading area.

It is best that the bags be unloaded before the discharge chute and flex tube areas become clogged. If clogging occurs, it will be necessary to clear the blower chute and flex tube areas of all material before starting to mow again.

WARNING ⚠

Make certain the engine is turned off, the steering control levers are in the park brake position and the ignition key is removed from the ignition switch and be sure blades have stopped before clearing the blower chute and flex tube areas.

WARNING ⚠

Never place hands or feet into the discharge area. The impeller is relatively close to the housing and will cause severe injury. Use a probe to clean debris from blower housing discharge area. The discharge cover must remain closed whenever the blower chute is removed.

WARNING ⚠

Never engage mower deck unless catcher flex tube is clamped in place on the catcher inlet tube and inserted onto blower chute outlet tube. Figure 4-1

Unloading the Catcher

WARNING ⚠

Park the unit on a level surface, disengage the deck clutch switch, place the steering control levers in the park brake position and shut the engine off. Remove the ignition key. Make certain the deck clutch switch is in the disengaged position before unloading.

Get off the mower. Unhook the elastic latch from the catcher frame. Raise the catcher lid, remove the bags and dump them. Figure 4-2 and Figure 4-3

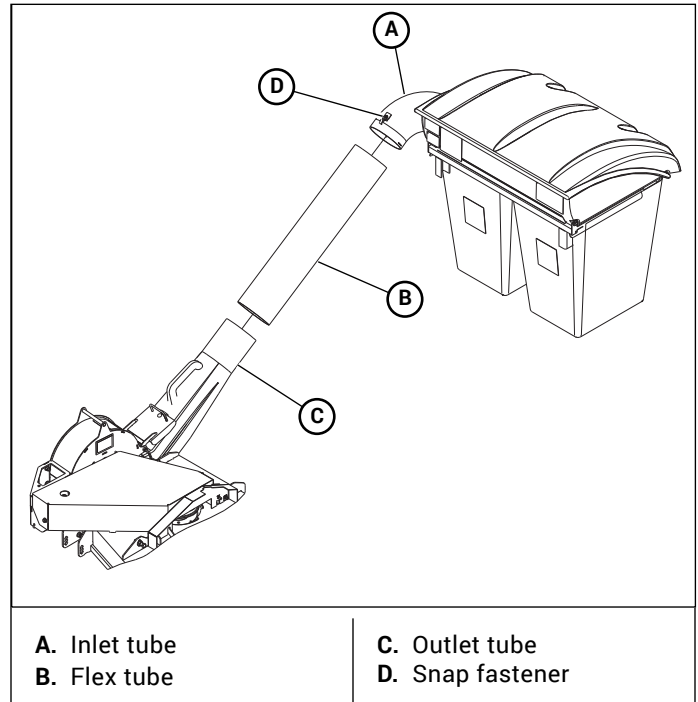


Figure 4-1

Return the bags to the catcher assembly, making sure that the non-mesh side of the bag is toward the engine, close the catcher lid and re-hook the elastic latch. Figure 4-2 and Figure 4-3

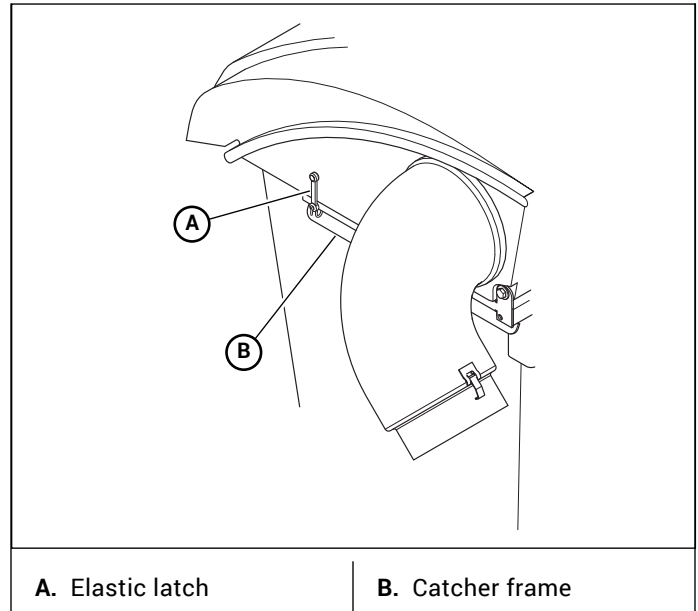


Figure 4-2

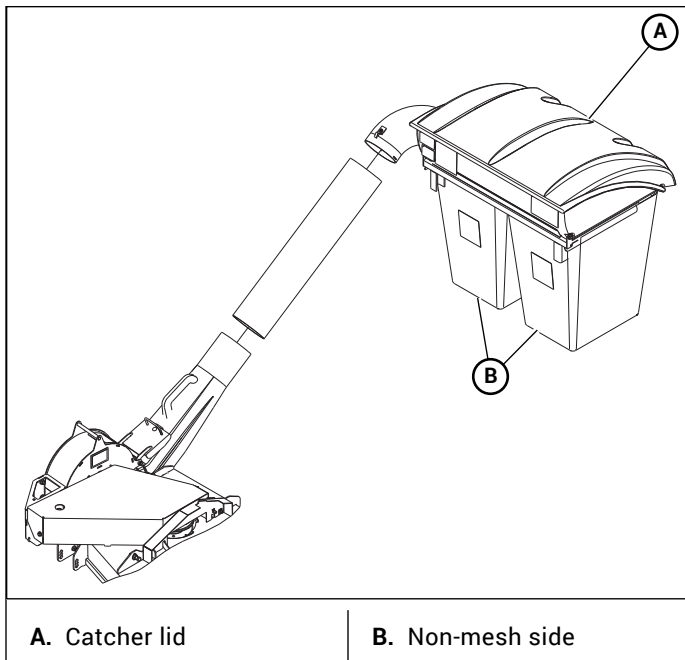


Figure 4-3

Converting To Side Discharge Mode

Included with each adapter kit is a tall pulley cover. This is used when converting from catcher mode to side discharge mode.

To convert to side discharge mode:

1. Park the mower on a flat surface.
 - Place the deck clutch switch in the "OFF" (disengaged) position.
 - Place the steering control levers in the park brake position.
 - Shut off the engine and remove the key from the ignition switch.
 - Disconnect the negative battery cable.
2. Remove the flex tube from the catcher lid elbow chute and blower chute outlet tube. Figure 4-4
3. Remove the blower chute from the blower assembly.
4. Remove the pulley cover from the deck. Figure 4-4
5. Release the tension from the blower drive belt and remove it. Figure 4-4

NOTE: It is not necessary to remove the double pulley on the deck spindle.
6. Remove the pin that connects the blower adapter to the deck and remove the blower housing and adapter. Figure 4-4

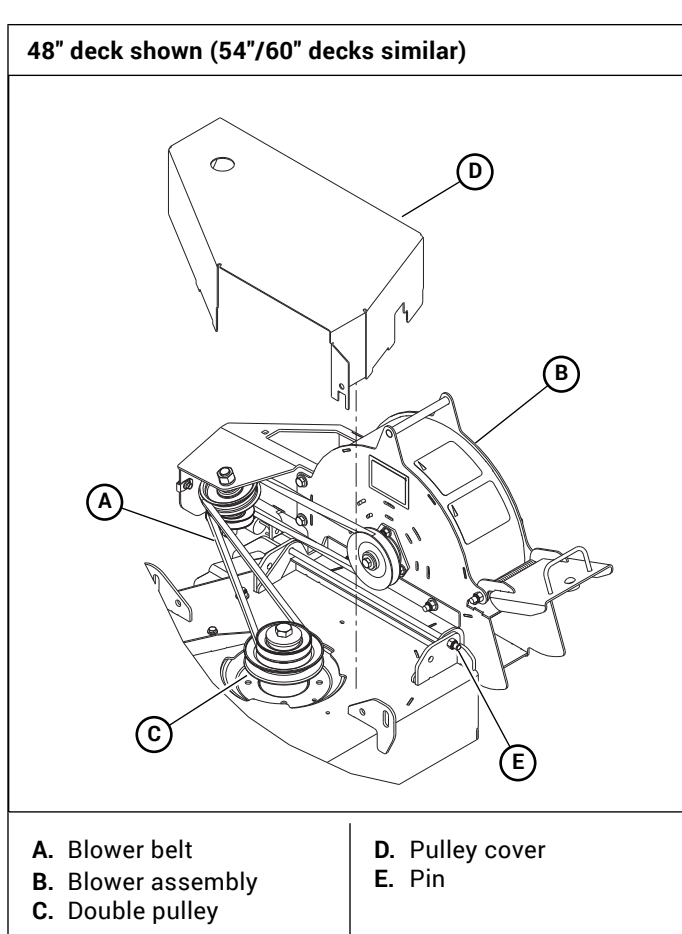


Figure 4-4

7. Assemble the torsion spring, the original discharge chute and pin to the deck. Make sure the torsion spring is assembled as shown so that it applies pressure to the discharge chute and keeps it in the down position. Figure 4-5
8. Assemble the tall pulley cover (included with the catcher) to the deck. Figure 4-6

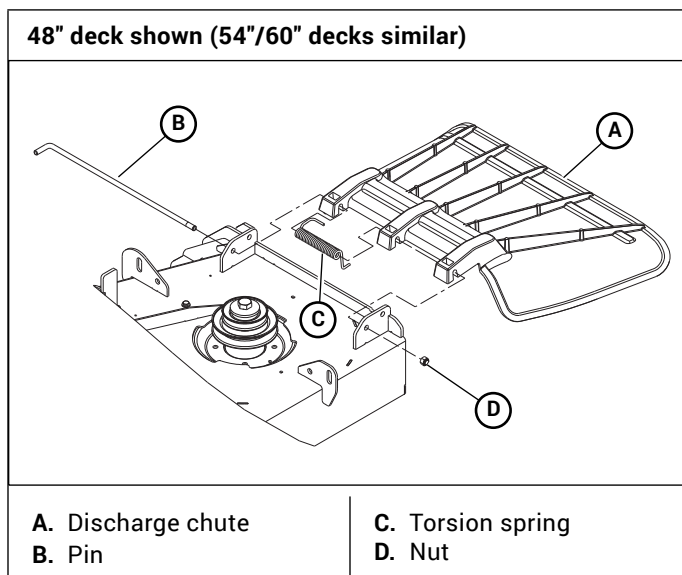
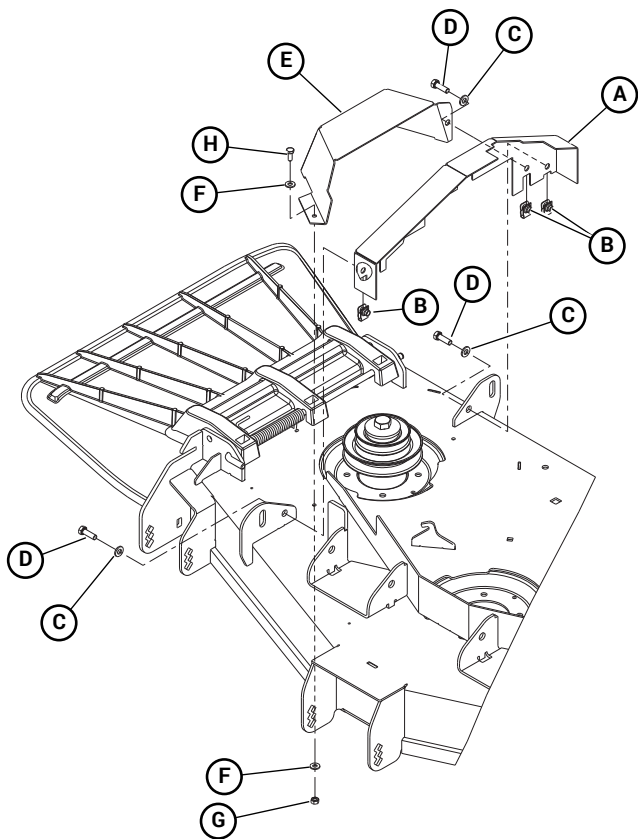


Figure 4-5

48" deck shown (54"/60" decks similar)



- | | |
|--------------------------|----------------------------|
| A. Catcher guard | E. Pulley cover |
| B. Clip nut .312 X .20 | F. Flat washer .281 X .625 |
| C. Flat washer .343 SAE | G. Nut .25-20 |
| D. Cap screw .312 X 1.00 | H. Cap screw .25 X .625 |

Figure 4-6

9. Remove the bags and lid assembly from the rear of the machine.
10. It is not necessary to remove the rear catcher mounting parts.

WARNING

Always operate with the complete catcher system, mulching system or side discharge chute in place and in the lowest position.

11. Remove the weights from the front of the mower. The weight mount can remain in place on the mower.
12. The baffles can either be removed or left attached to the underneath side of the deck. If you choose to remove them, follow these procedures.
 - A. Raise the front of the mower and block it up high enough to allow the baffles to be removed from the

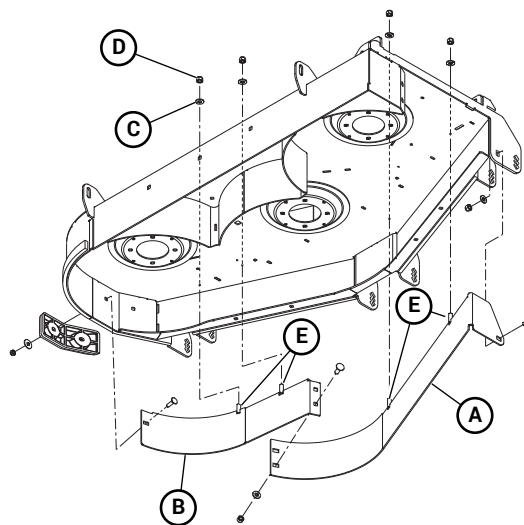
underneath side of the deck. Chock the drive wheels to prevent the mower from moving.

WARNING

Use caution when working under the deck as mower blades are sharp and can cut.

- B. Remove the baffles from the underneath side of the deck. Figure 4-7

48" deck shown. Blades removed for clarity. (54"/60" decks similar)



- | | |
|----------------------------|--|
| A. Front RS baffle | D. Nut .375-16 NL |
| B. Front LS baffle | E. Replace these studs with 3/8"-16 X 3/4" bolts |
| C. Flat washer .379 X .813 | |

Figure 4-7

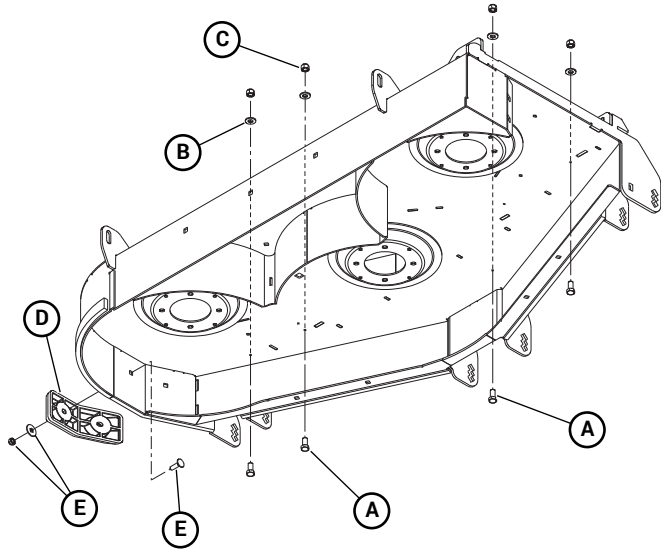
- C. It will be necessary to plug the holes that are left open, in the top of the deck, when the baffles are removed. Use the 3/8"-16 x 3/4" cap screws that are furnished with the catcher and the existing flat washers and 3/8" nuts to plug these holes. Figure 4-7

NOTE: Make sure the left bumper is re-attached.

WARNING

Close off the baffle mounting holes to prevent debris escaping from the underneath side of the deck.

48" deck shown. Blades removed for clarity. (54"/60" decks similar)



- | | |
|----------------------------|---------------------------|
| A. Cap Screw .375-16 X .75 | D. Left bumper (existing) |
| B. Flat washer .379 X .813 | E. Existing hardware |
| C. Nut .375-16 NL | |

Figure 4-8

- D. Raise the front of the mower and remove the jack stands.
 - E. Lower the front of the mower and remove the wheel chocks.
13. Reconnect the negative battery cable.

MAINTENANCE & STORAGE

Blower Housing and Transfer Tube Maintenance

WARNING

Never work on the blower assembly or mower deck when the engine is running.

WARNING

Clean flammable material from machine. Prevent fires by keeping engine compartment, top of deck, exhaust area, battery, hydraulic lines, fuel line, fuel tank and operator's station clean of accumulated trash, grass clippings, and other debris. Always clean up spilled fuel and oil.

The blower, flex tube and blower chute (Figure 5-1) should be kept clean and free of any accumulation of matted clippings or other obstructions. Occasional clogging may also occur when working in heavy, wet or matted grass.

WARNING

Never place hands or feet into the blower chute. There is an impeller located inside the housing that will cause severe injury. Use a probe to clear debris from blower chute.

WARNING

Never operate the mower deck with side deflector damaged, altered, removed or in raised position, except when the entire grass catcher attachment or mulching system is being used.

WARNING

Prevent objects being thrown and the accumulation of grass clippings and other debris in engine compartment by NEVER operating mower deck unless:

- Both bags are installed.
- Hood is lowered and latched.
- Flex tube is in place on the blower chute and on the catcher lid elbow chute and clamped.

To service the blower housing: remove the pulley cover from the top of the deck and blower housing. Figure 5-2

To service the flex tube, remove the tube from the unit. The tube can be cleaned by using soapy water and washing the inside of the tube with a pressure washer. Rinse with water.

To clean the bags, hand wash with soap and water; rinse with clean water.

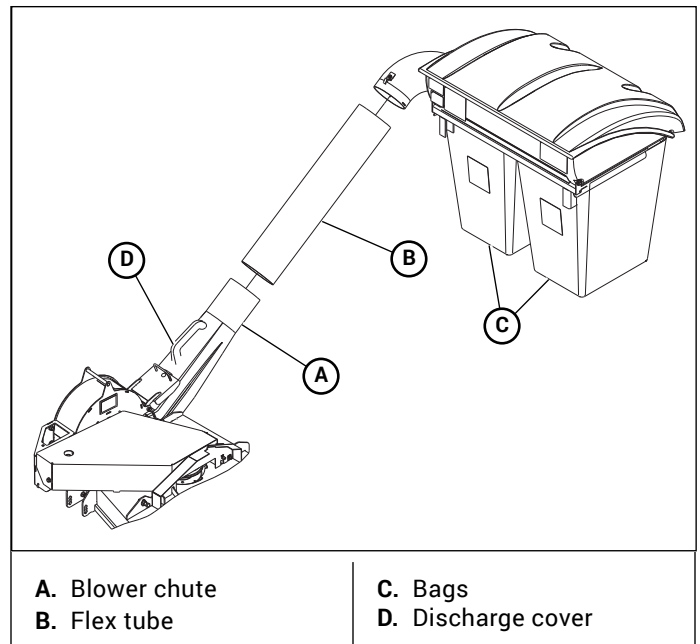


Figure 5-1

48" deck shown (54"/60" decks similar)

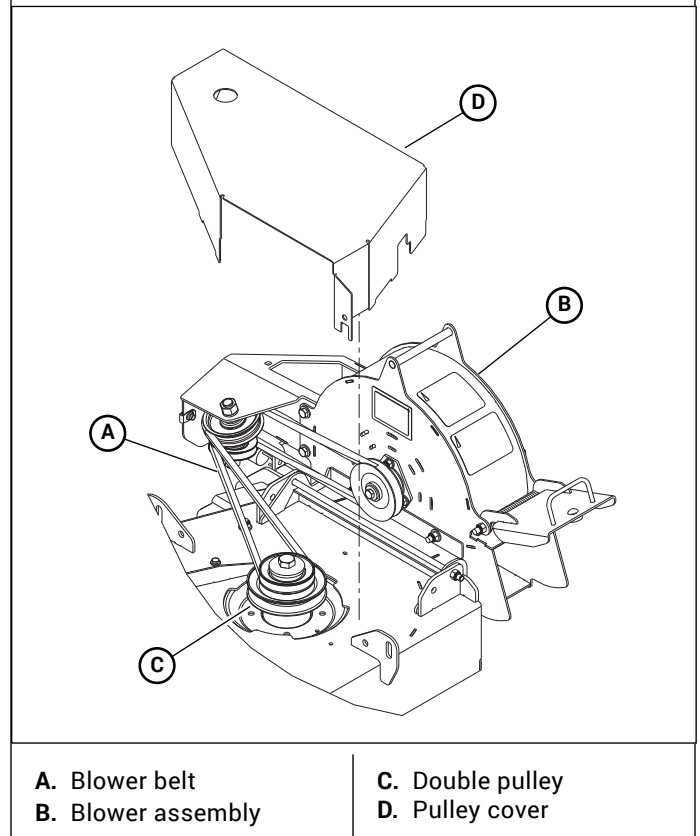


Figure 5-2

Blower Drive Belt

The blower drive belt (Figure 5-2) is located under the pulley cover. This belt is spring tensioned and should not need adjustment.

To inspect or replace the belt, remove the pulley cover from the top of the deck and the blower housing.

When belt replacement becomes necessary, check the condition of the pulleys. Clean the grooves and check for excessive wear. A new belt should not run against the bottom of groove. If it does bottom out, the pulley needs replacing.

Blower Impeller

The blower impeller shaft bearings do not require lubrication.

Storage

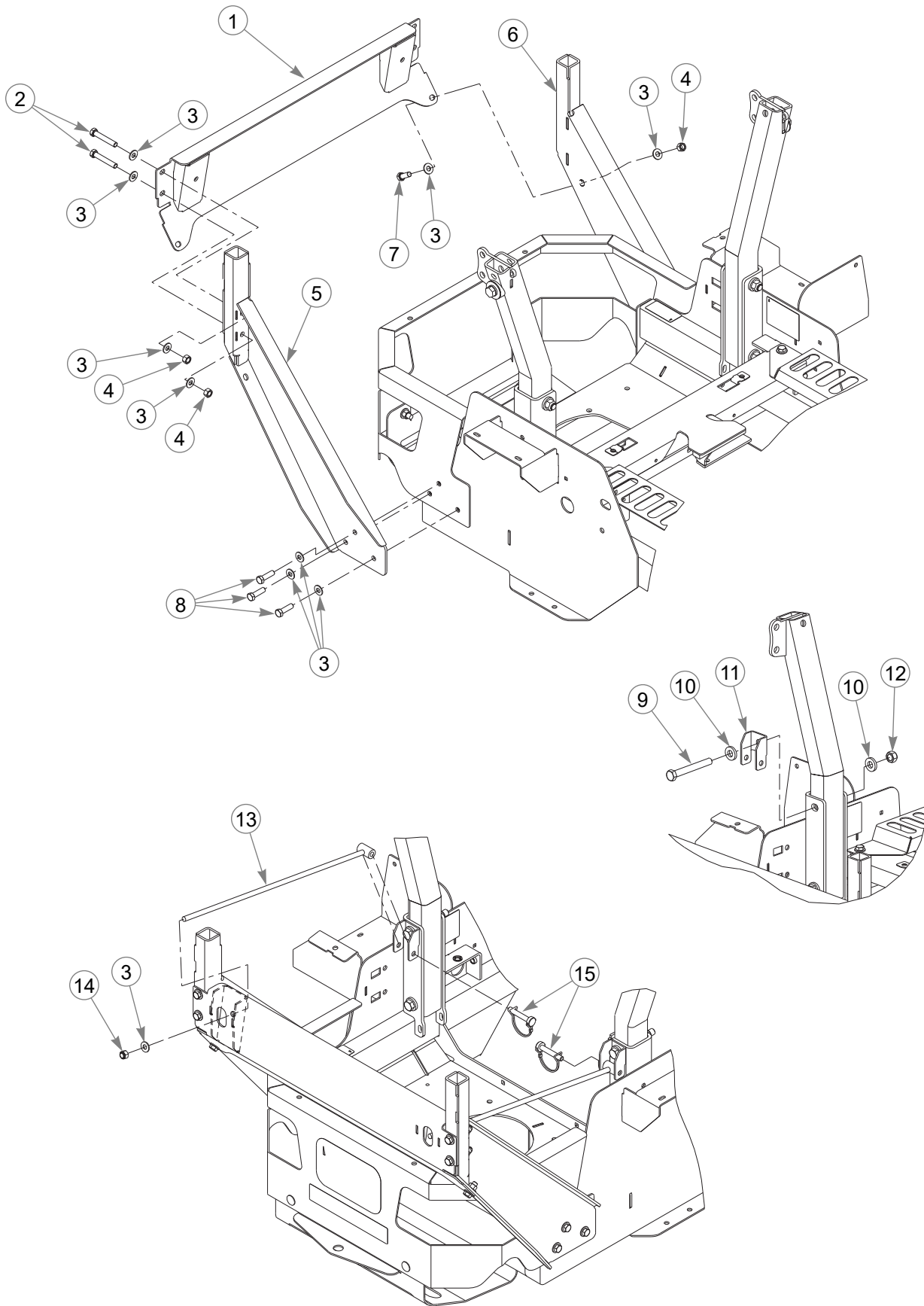
When your mower is to sit idle for a period of time, scrape and remove the matted grass material from inside the hood and clean the bags.

Check for loose or missing hardware, tighten or replace. Also check for badly worn or damaged parts, consider replacing them at this time. Touch up chipped paint areas; your dealer has aerosol spray paint available.

Parts List

Frame Adapter	6-2
Frame Weights	6-4
2 Bag Catcher	6-6
Plastic Lid—602603 & 606940	6-8
Chute & Bags	6-10
Blower	6-12
Pulley Mount Assembly	6-14
48" Catcher Adapter	6-16
54" Catcher Adapter	6-22
60" Catcher Adapter	6-28

Frame Adapter

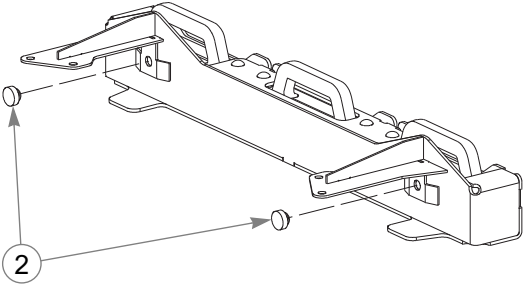
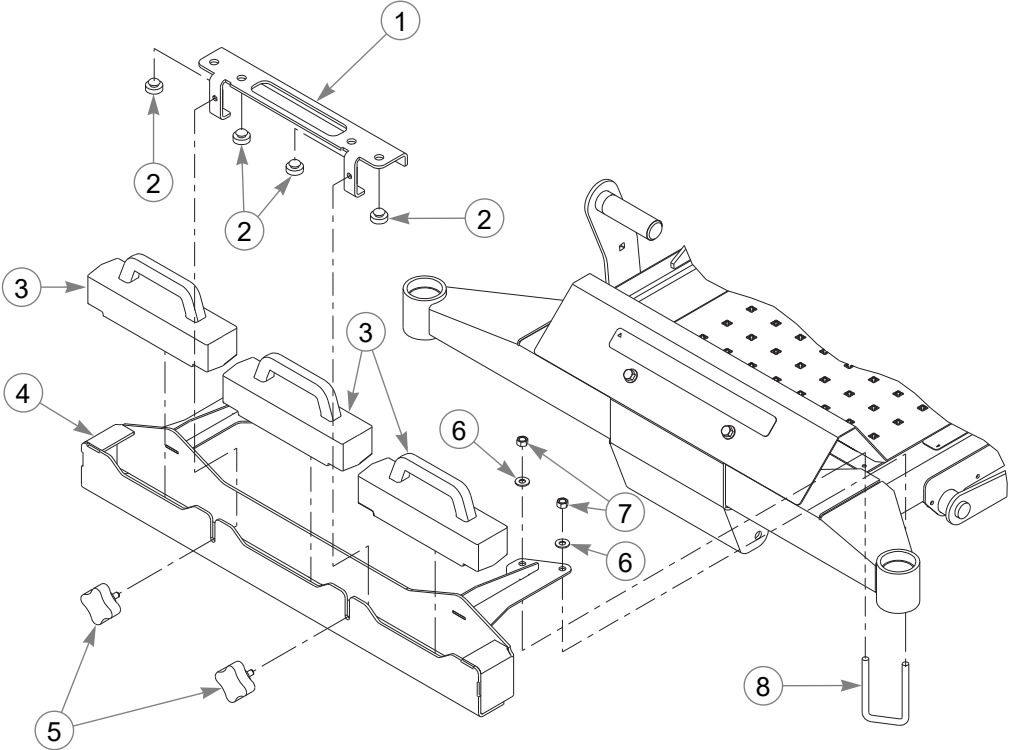


Frame Adapter

INDEX NO.	PART NO.	QTY	DESCRIPTION
1	120876	1	MOUNT SUPPORT
2	056036	4	CS .375-16 X 2.25 HX G5
3	767954	20	FW .379 X .813 X .063
4	054502	6	NT .375-16 HX G5 ZNY
5	120872	1	RS CATCHER MOUNT
6	120873	1	LS CATCHER MOUNT
7	036244	2	CS .375-16 X 1.00 HX G5
8	052860	6	CS .375-16 X 1.25 HX G5 ZN
9	089938	2	CS .500-13 X 4.00 HX G5 Z
10	767962	4	FW .531 X 1.063 X .090 SAE
11	121073	2	TENSION ROD MOUNT
12	023317	2	NT .500-13 UNT LK G8 ZN
13	121283	2	TENSION ROD
14	086660	2	NT .375-16 HX ZY NL
15	604803	2	CE .375 X 2.00 W/ BALE

NOTES:

Frame Weights

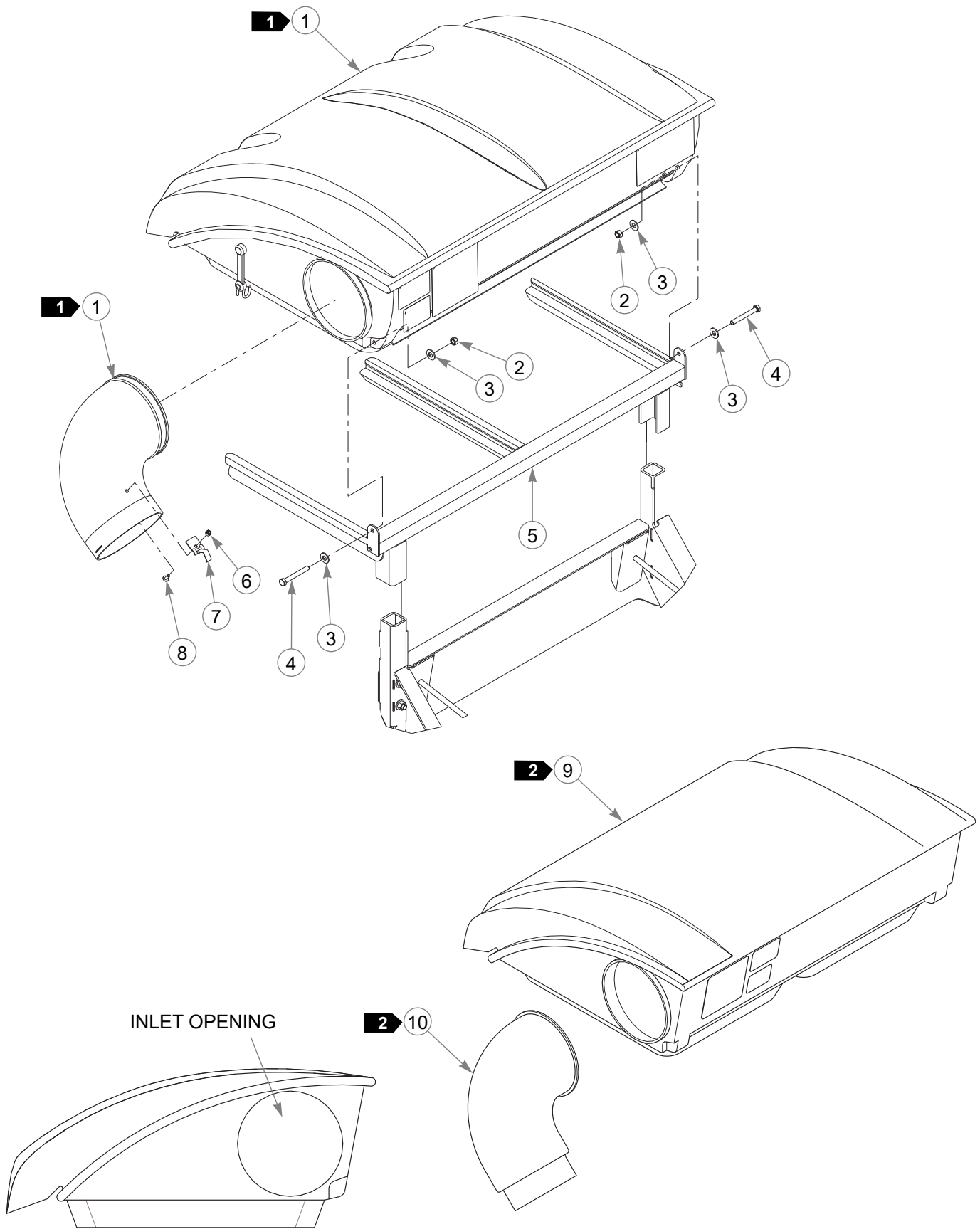


Frame Weights

INDEX NO.	PART NO.	QTY	DESCRIPTION
1	120828	1	WEIGHT LOCK
2	781880	6	BUMPER
3	604375	3	WEIGHT
4	120826	1	WEIGHT TRAY
5	792002	2	KNOB
6	054502	4	NT .375-16 HX G5 ZNY
7	767954	4	FW .379 X .813 X .063
8	603340	2	UB .375-16 X 2.00 X 4.00 SQ

NOTES:

2 Bag Catcher



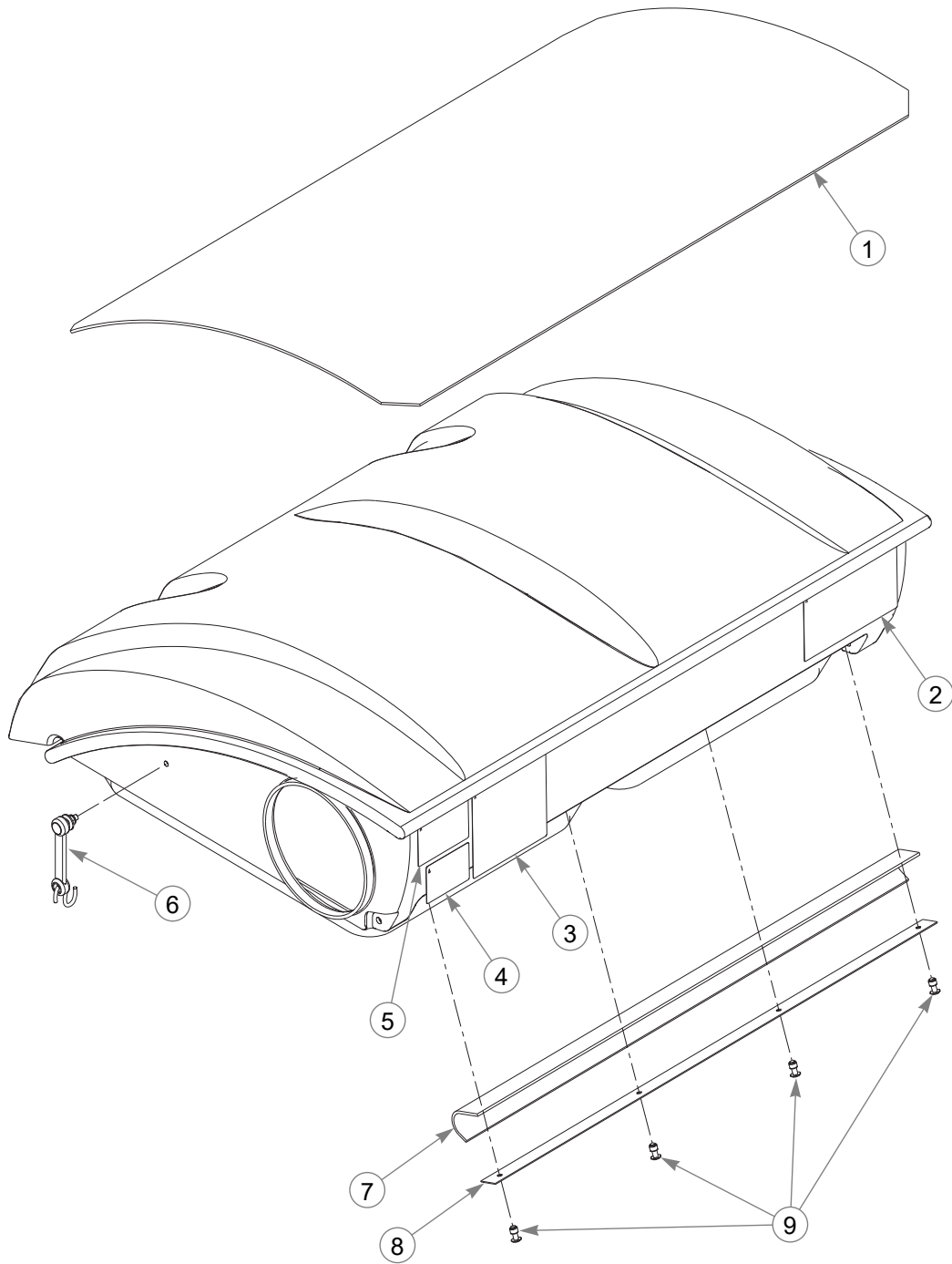
2 Bag Catcher

INDEX NO.	PART NO.	QTY	DESCRIPTION
1	607410	1	2 BAG CATCHER LID KIT
2	058776	2	NT .312-18 HX ZY NL
3	767954	4	FW .379 X .813 X .063
4	710087	2	CS .312-18 X 2.50 HX G5
5	605519	1	2 BAG CATCHER FRAME
6	059832	1	NT #10-24 HX NL ZN
7	602830	1	SNAP FASTENER
8	060723	1	MS #10-24 X .500 TH SL BO
9	606940	1	2 BAG CATCHER LID
10	606941	1	CATCHER INLET

NOTES:

1. To be used as replacement parts for catcher lids with a 6.30" diameter inlet opening.
2. To be used as replacement parts for catcher lids with a 7.60" diameter inlet opening.

Plastic Lid—602603 & 606940

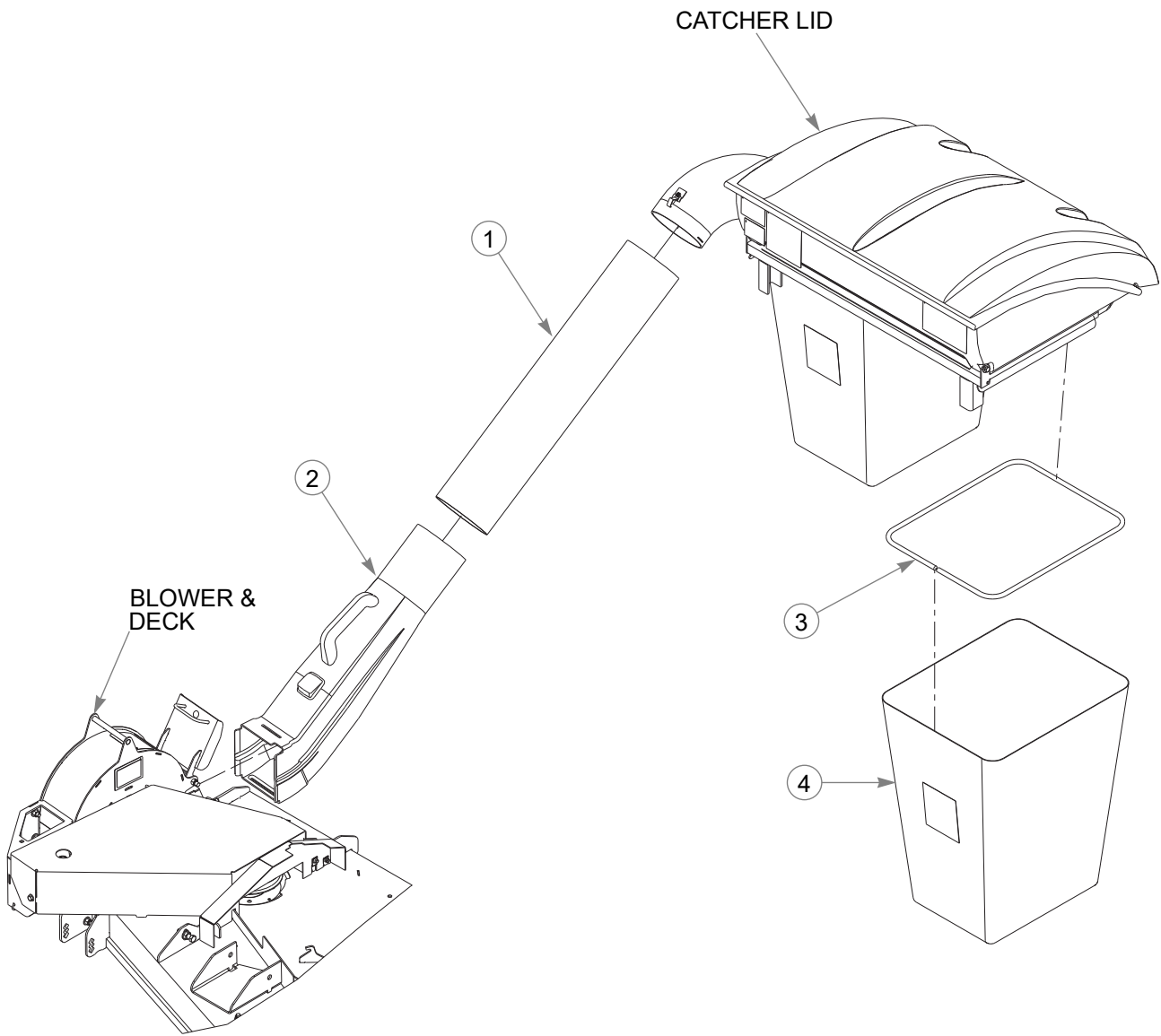


Plastic Lid—602603 & 606940

INDEX NO.	PART NO.	QTY.	DESCRIPTION
1	602601	1	CATCHER VENT GUARD
2	602632	1	MADE IN USA DECAL
3	602635	1	TURN OFF WARNING DECAL
4	602633	1	HEARING PROTECTION DECAL
5	602634	1	HOSE WEAR DECAL
6	602602	1	ELASTIC LATCH
7	603858	1	RUBBER SEAL
8	603857	1	DUST GUARD BRACE
9	603859	4	5MM PLASTIC RIVET

NOTES:

Chute & Bags

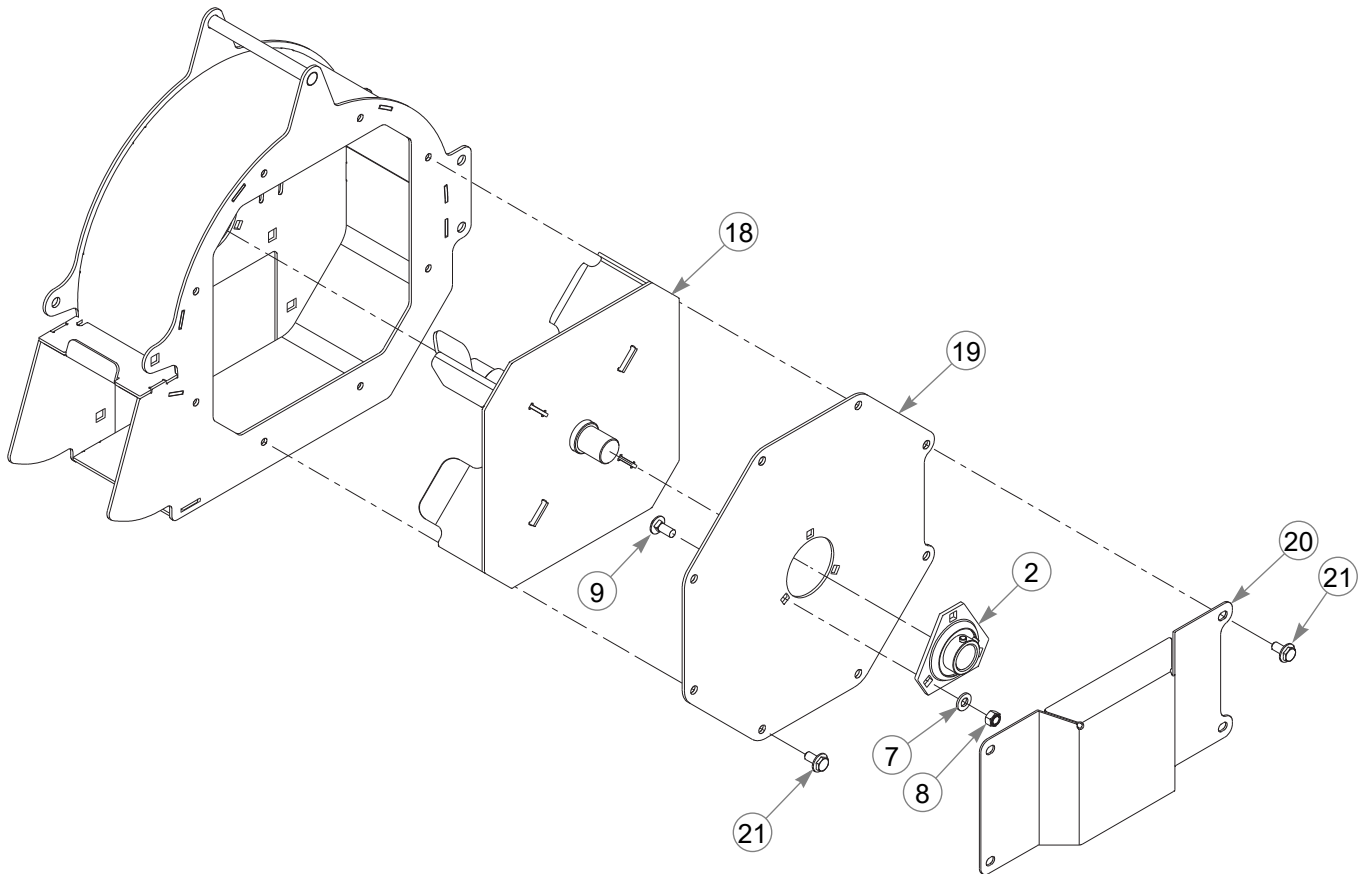
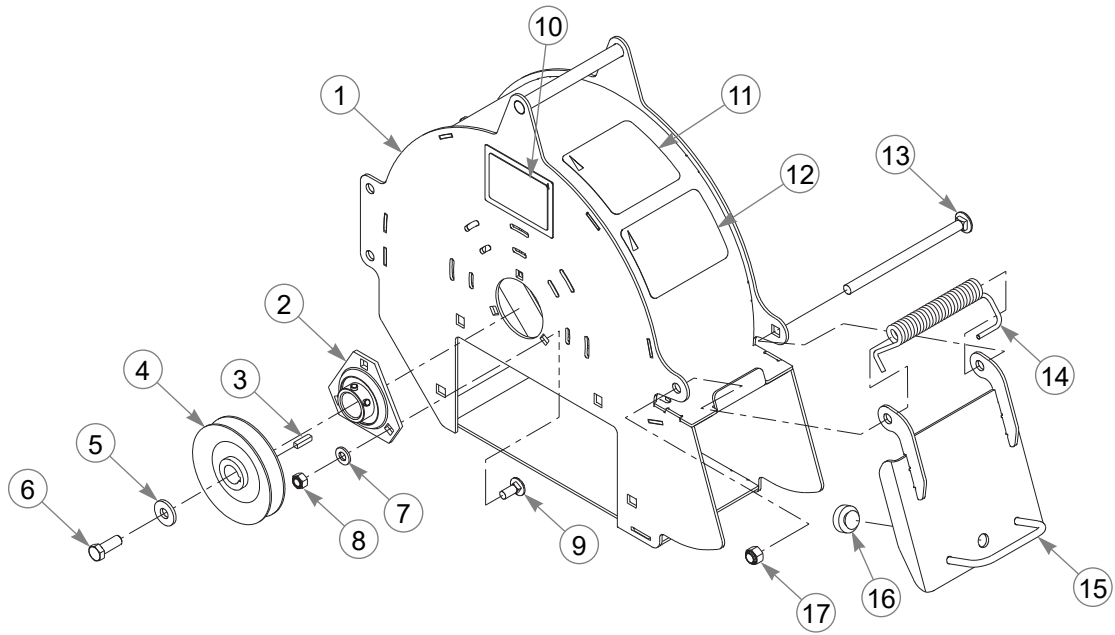


Chute & Bags

INDEX NO.	PART NO.	QTY	DESCRIPTION
1	607283	1	FLEX TUBE 6.00" X 31"
2	602671	1	BLOWER CHUTE
3	602611	2	CATCHER BAG FRAME
4	602612	2	PECO CATCHER BAG

NOTES:

Blower

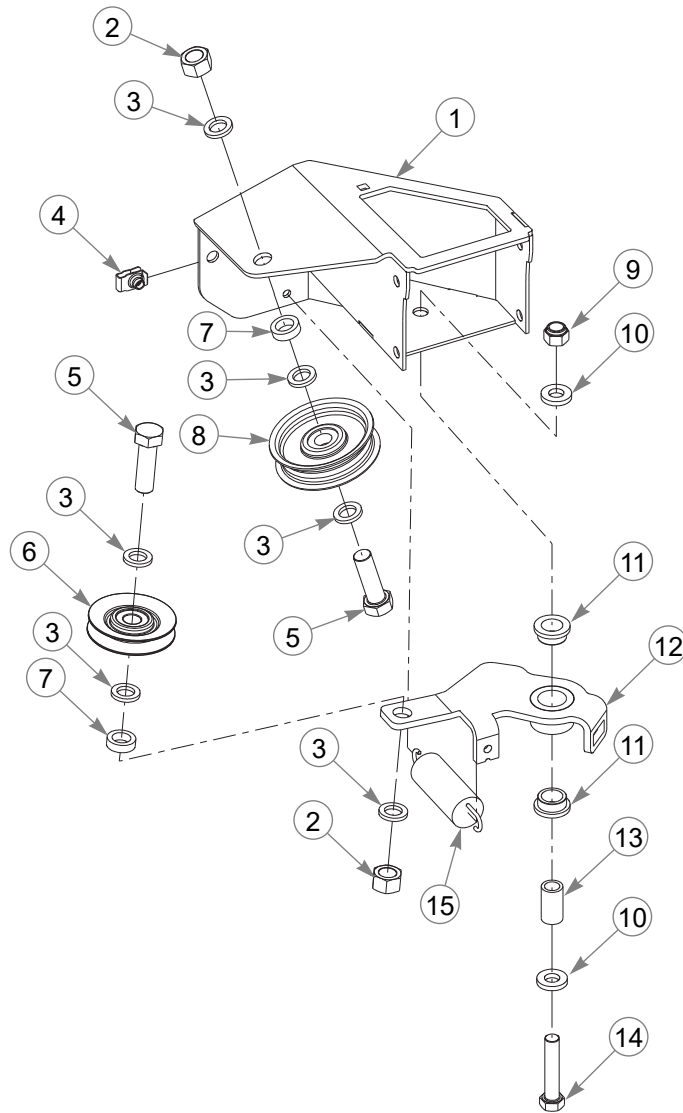


Blower

INDEX NO.	PART NO.	QTY.	DESCRIPTION
1	121205	1	BLOWER HOUSING
2	604264	2	BEARING 1.0" BORE FLANGE
3	322529	1	KEY .187 SQ X .750 LONG
4	602663	1	PULLEY, DRIVEN 3.50" EFF
5	712919	1	FW .406 X 1.00 X .12 HRD Z
6	036244	1	CS .375-16 X 1.00 HX G5
7	768523	6	FW .343 X .687 X .051/.080H
8	058776	6	NT .312-18 HX ZY NL
9	016253	6	CB .312-18 X .75 FUL ZN
10	N/A	1	SERIAL NUMBER / SPEC DECAL
11	602757	1	BLOWER DANGERS DECAL
12	602758	1	EYES/EARS/FOOT DECAL
13	602674	1	CB .375-16 X 6.00 STD
14	602435	1	TORSION SPRING
15	112742	1	DISCHARGE COVER
16	781880	1	BUMPER
17	086660	1	NT .375-16 HX ZY NL
18	112715	1	BLOWER IMPELLER
19	112714	1	IMPELLER COVER
20	112970	1	BEARING COVER
21	799130	8	CS .312-18 X .50 HXFL

NOTES:

Pulley Mount Assembly

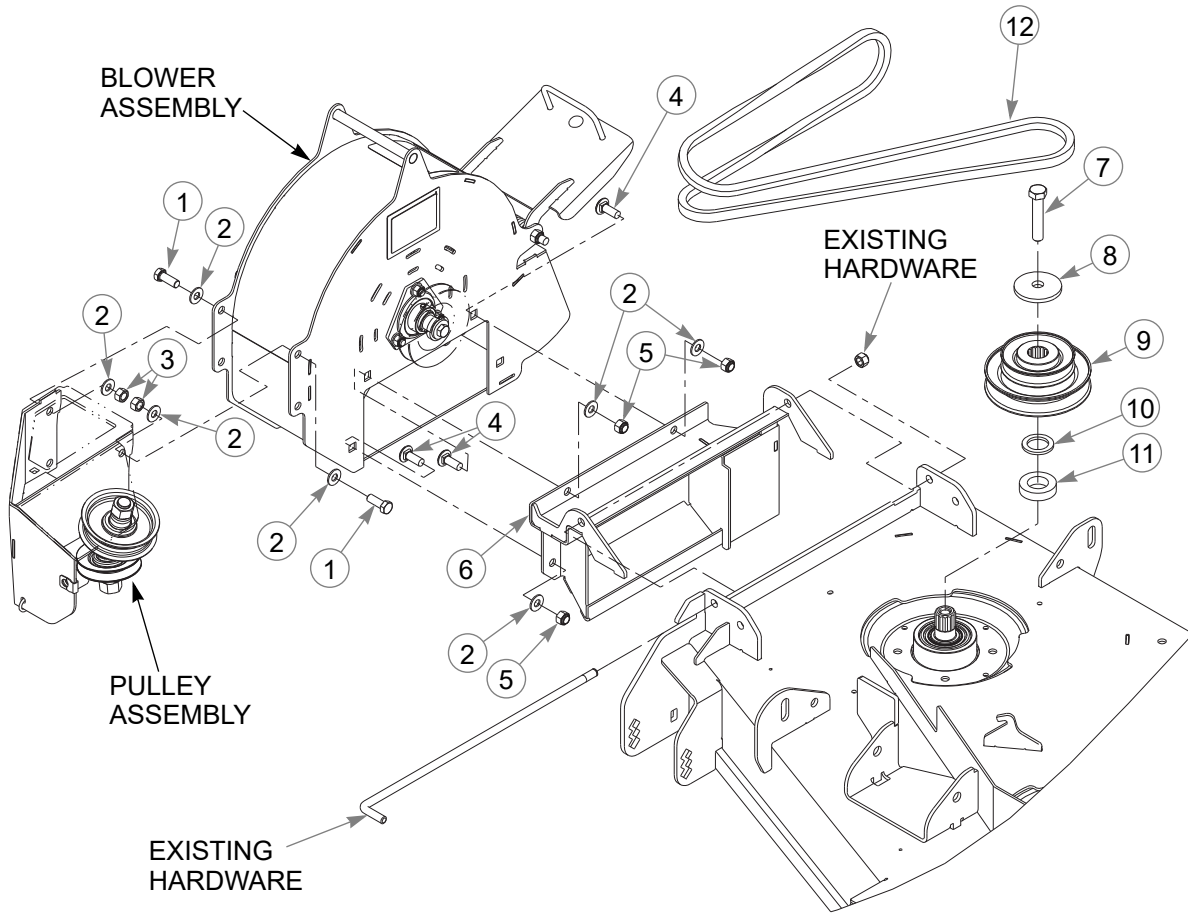


Pulley Mount Assembly

INDEX NO.	PART NO.	QTY.	DESCRIPTION
1	121204	1	PULLEY MOUNT
2	016972	2	NT .625-11 HX G5 ZN
3	028118	6	FW .625 X 1.00 X .134 ZN
4	601069	1	CN .312-18 X .20 MAX THK
5	016642	2	CS .625-11 X 2.00 HX G5 Z
6	601065	1	INSIDE IDLER PULLEY
7	600296	2	DECK IDLER SPACER
8	791566	1	IDLER PULLEY 3.25" OD X .6
9	781567	1	NT .500-13 NL G5
10	767962	2	FW .531 X 1.063 X .090 SAE
11	770867	2	BUSHING
12	121216	1	IDLER ARM
13	109549	1	BUSHING
14	008573	1	CS .500-13 X 2.50 HX G5
15	036384	1	SPRING 1/4 COIL PL 1.23

NOTES:

48" Catcher Adapter

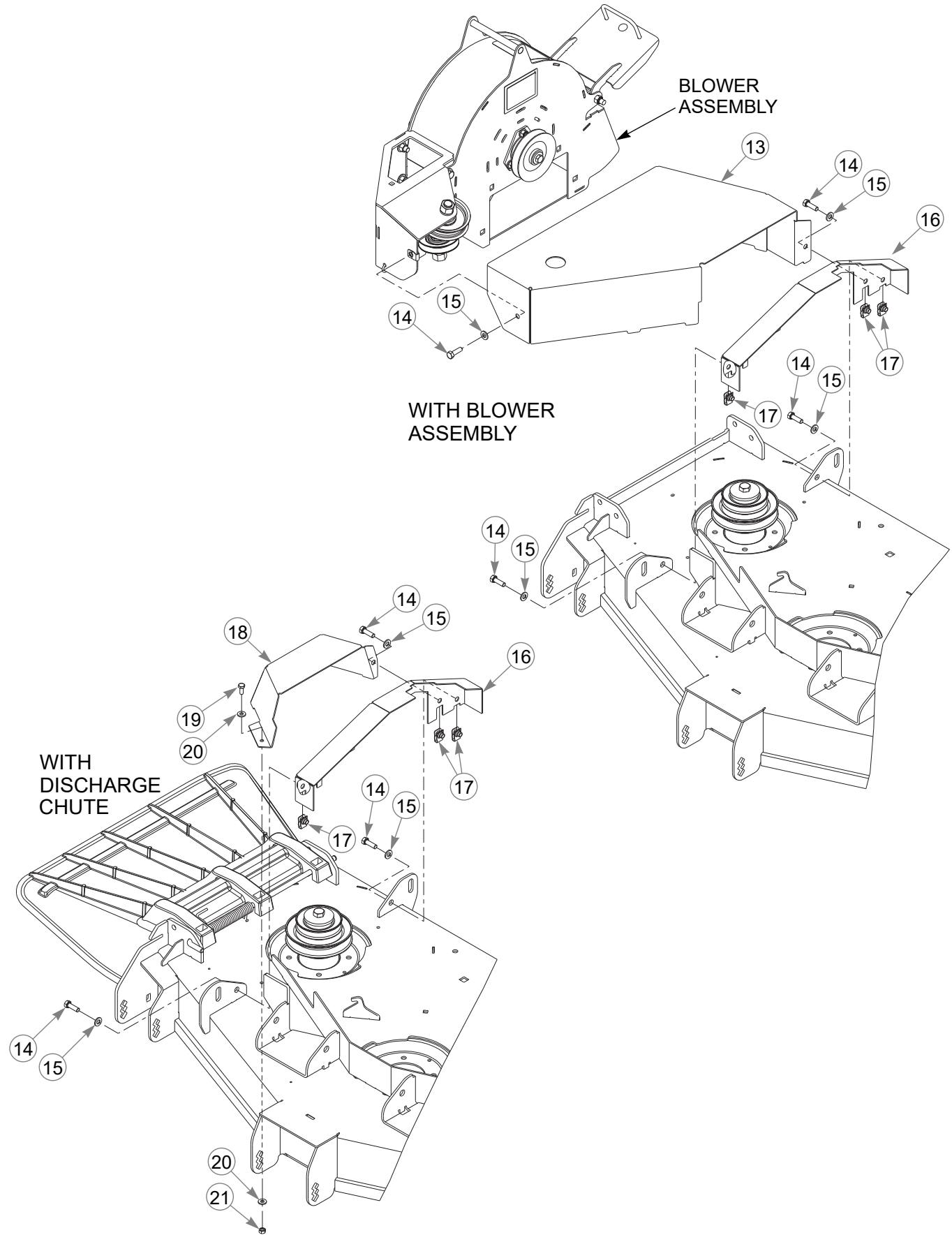


48" Catcher Adapter

INDEX NO.	PART NO.	QTY.	DESCRIPTION
1	036244	4	CS .375-16 X 1.00 HX G5
2	767954	19	FW .379 X .813 X .063
3	054502	4	NT .375-16 HX G5 ZN
4	025395	7	CB .375-16 X 1.00 G5 ZN
5	086660	11	NT .375-16 HX ZY NL
6	121198	1	BLOWER MOUNT
7	008573	1	CS 0.500-13 X 2.500 HX G5
8	752386	1	CW .515 X 2.25 X .204 BLK
9	601481	1	DOUBLE PULLEY
10	045765	1	FW 1.030 X 1.500 X .134
11	604661	1	PULLEY SPACER
12	604933	1	BELT, HA 73.0 EL

NOTES:

48" Catcher Adapter

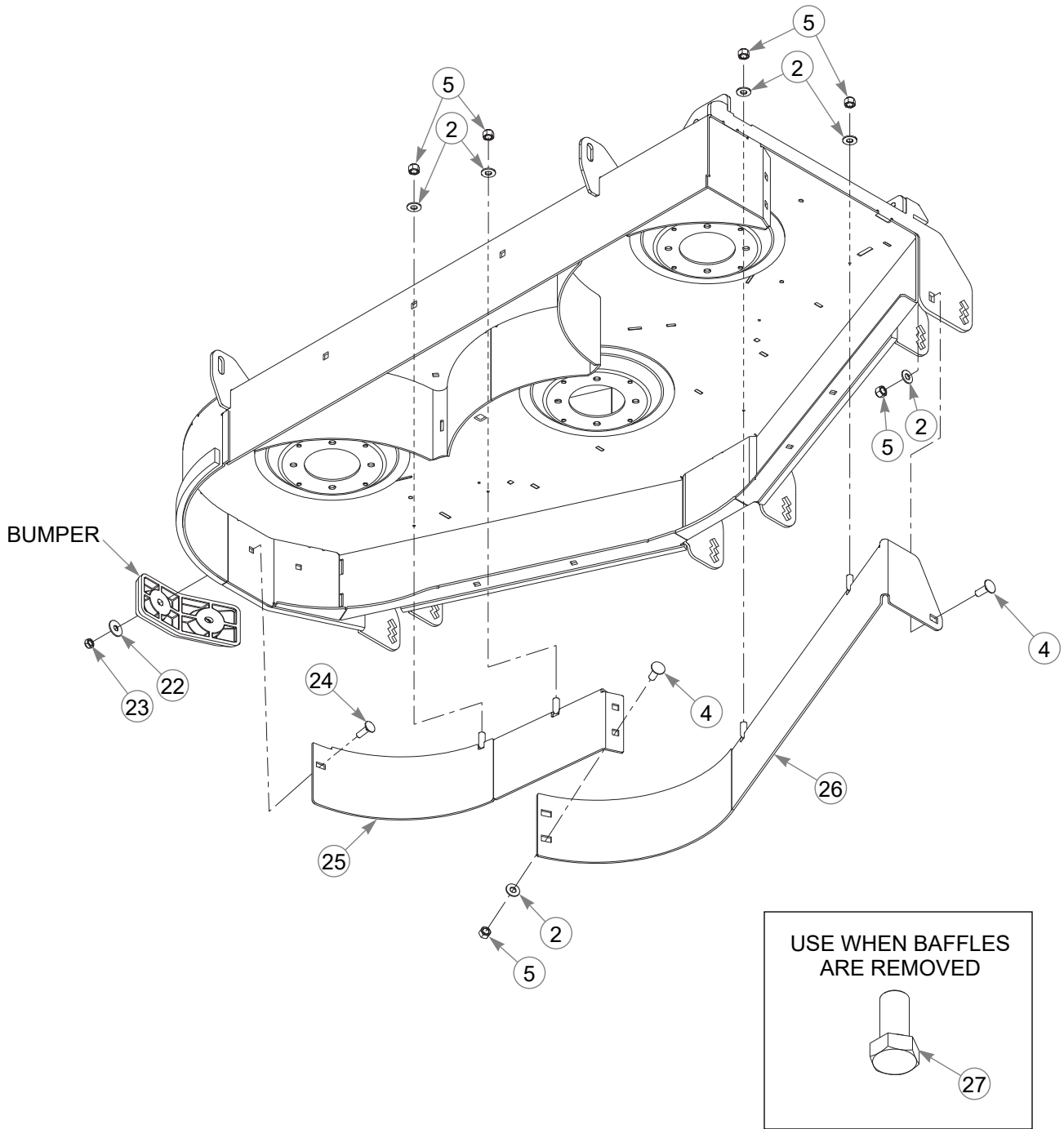


48" Catcher Adapter

INDEX NO.	PART NO.	QTY.	DESCRIPTION
13	121678	1	PULLEY COVER
14	036236	4	CS .312-18 X 1.00 HX G5
15	768523	4	FW .343 X .687 X .051/.080H
16	121408	1	CATCHER GUARD
17	601069	3	CN .312-18 X .20 MAX THK
18	121700	1	DOUBLE PULLEY COVER
19	064329	1	CS .250-20 X .625 HX G5
20	768515	2	FW .281 X .625 X .066
21	024927	1	NT .250-20 HX G5 ZN

NOTES:

48" Catcher Adapter

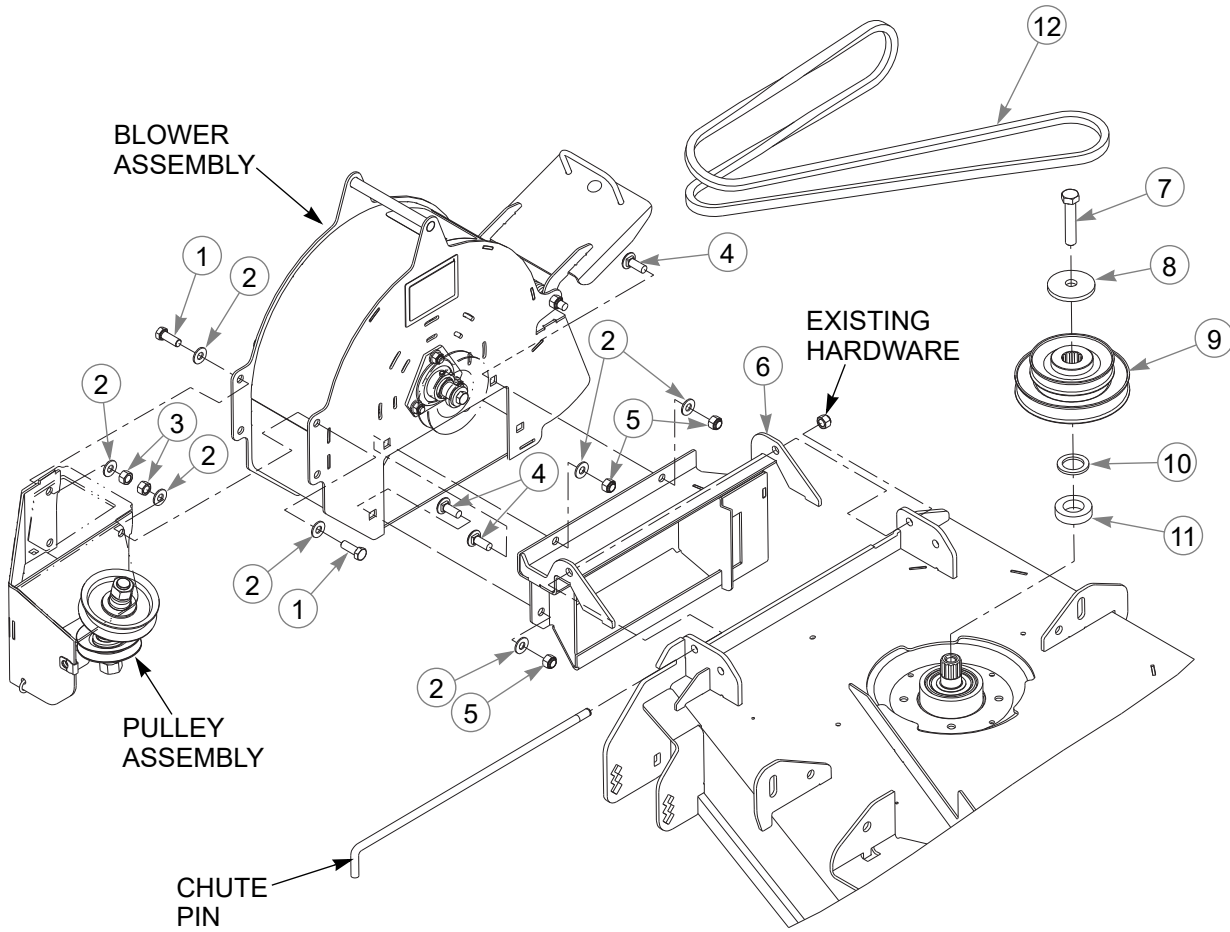


48" Catcher Adapter

INDEX NO.	PART NO.	QTY.	DESCRIPTION
22	079210	1	FW .344 X 1.00 X .06 ZN
23	604251	1	NT .312-18 HX NL JAM G2 ZN
24	037887	1	CB .312-18 X 1.00 FULL ZN
25	121495	1	FRONT RS BAFFLE
26	121494	1	FRONT LS BAFFLE
27	055822	4	CS .375-16 X .75 HX G5

NOTES:

54" Catcher Adapter

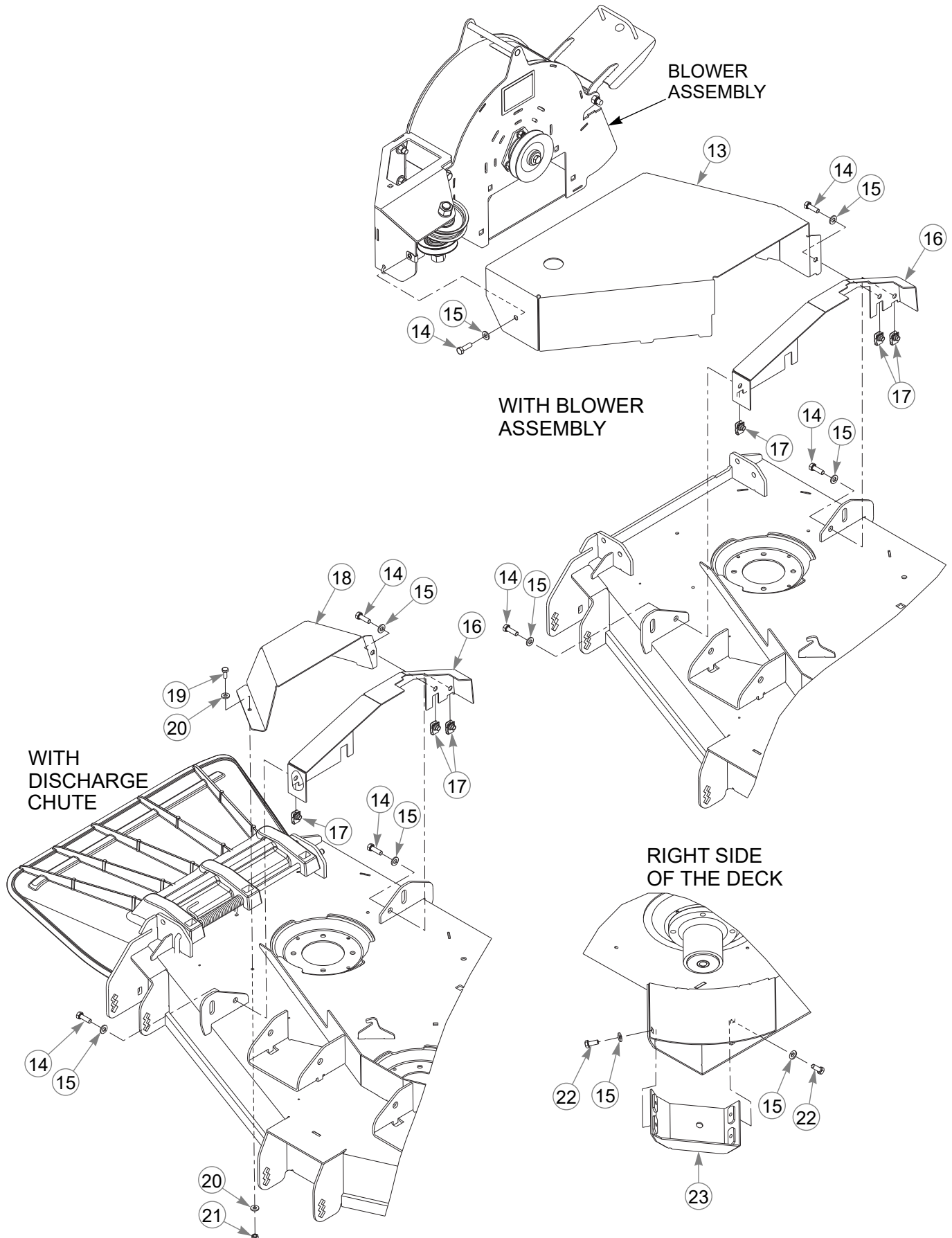


54" Catcher Adapter

INDEX NO.	PART NO.	QTY.	DESCRIPTION
1	036244	4	CS .375-16 X 1.00 HX G5
2	767954	19	FW .379 X .813 X .063
3	054502	4	NT .375-16 HX G5 ZN
4	025395	7	CB .375-16 X 1.00 G5 ZN
5	086660	11	NT .375-16 HX ZY NL
6	121648	1	ADAPTER MOUNT
7	008573	1	CS 0.500-13 X 2.500 HX G5
8	752386	1	CW .515 X 2.25 X .204 BLK
9	601480	1	DOUBLE PULLEY
10	045765	1	FW 1.030 X 1.500 X 0.134
11	604661	1	PULLEY SPACER
12	604169	1	BELT A-SEC 76.0" EL

NOTES:

54" Catcher Adapter

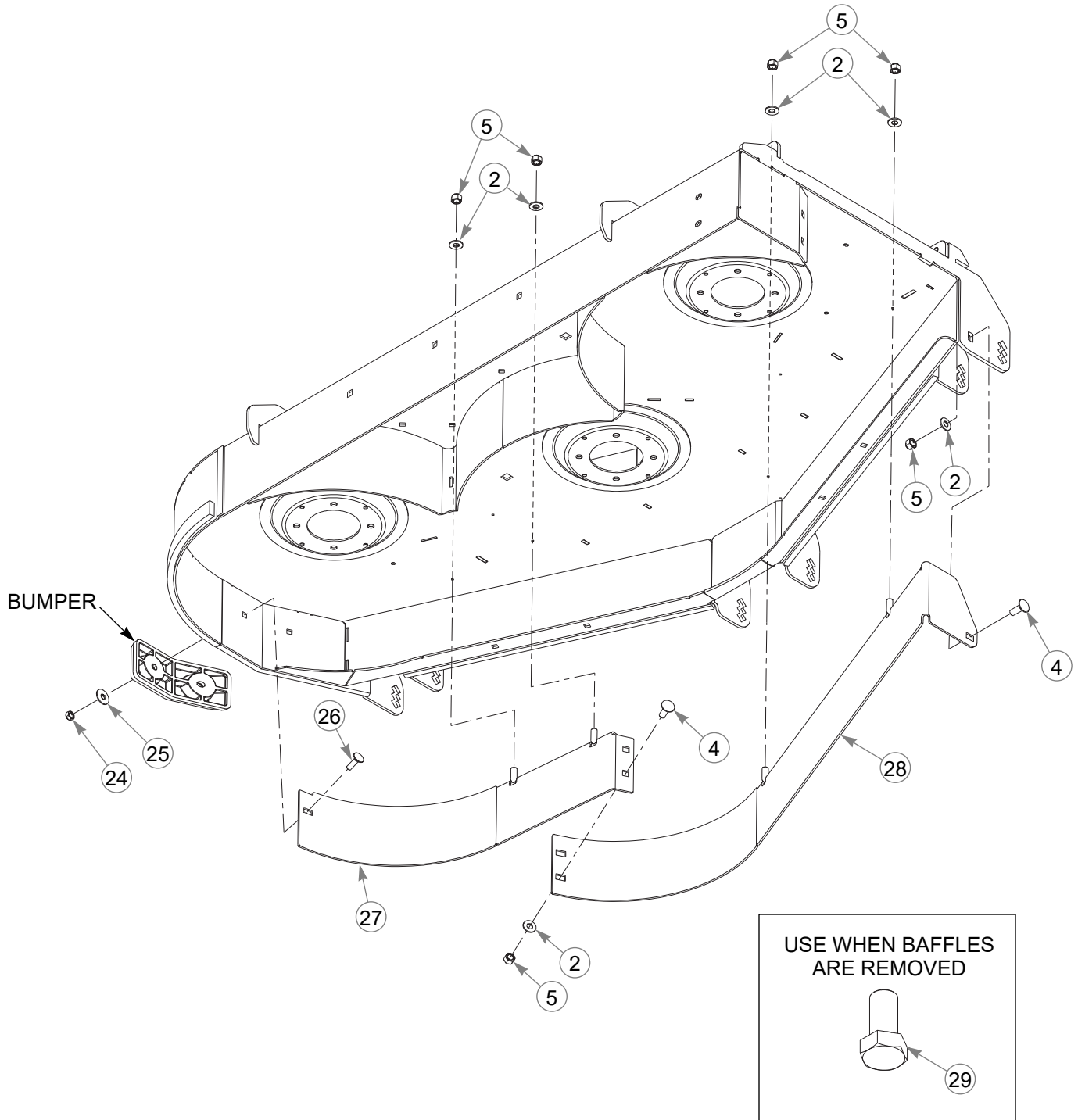


54" Catcher Adapter

INDEX NO.	PART NO.	QTY.	DESCRIPTION
13	121677	1	PULLEY COVER
14	036236	4	CS .312-18 X 1.00 HX G5
15	768523	6	FW .343 X .687 X .051/.080H
16	121410	1	CATCHER GUARD
17	601069	3	CN .312-18 X .20 MAX THK
18	121699	1	DOUBLE PULLEY COVER
19	064329	1	CS .250-20 X .625 HX G5
20	768515	2	FW .281 X .625 X .066
21	024927	1	NT .250-20 HX G5 ZN
22	034280	4	CS 0.312-18 X 0.750 HX G5
23	121818	1	CORNER SUPPORT

NOTES:

54" Catcher Adapter

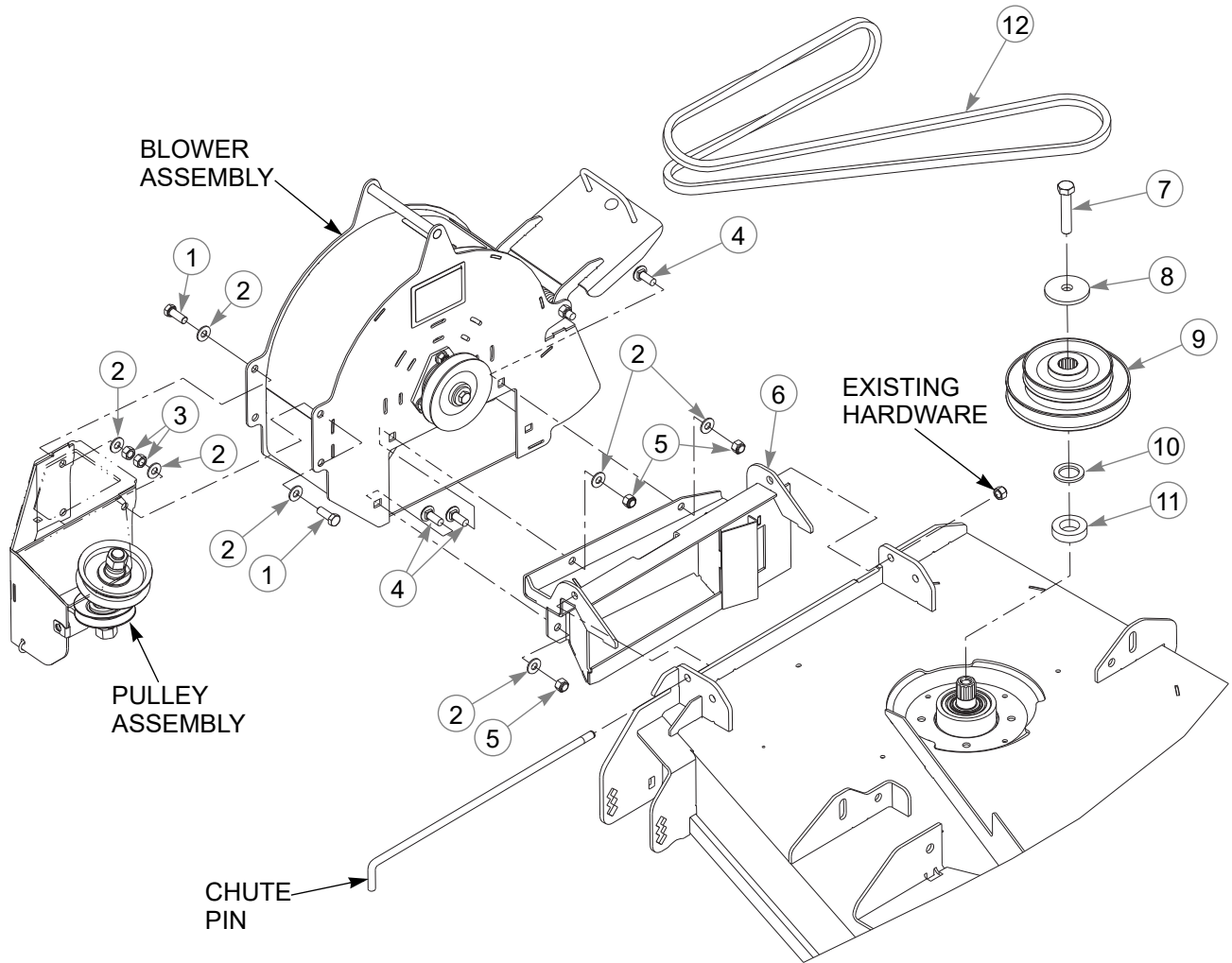


54" Catcher Adapter

INDEX NO.	PART NO.	QTY.	DESCRIPTION
24	604251	1	NT .312-18 HX NL JAM G2 ZN
25	079210	1	FW .344 X 1.00 X .06 ZN
26	037887	1	CB .312-18 X 1.00 FULL ZN
27	121492	1	LS FRONT BAFFLE
28	121493	1	RS FRONT BAFFLE
29	055822	4	CS .375-16 X .75 HX G5

NOTES:

60" Catcher Adapter

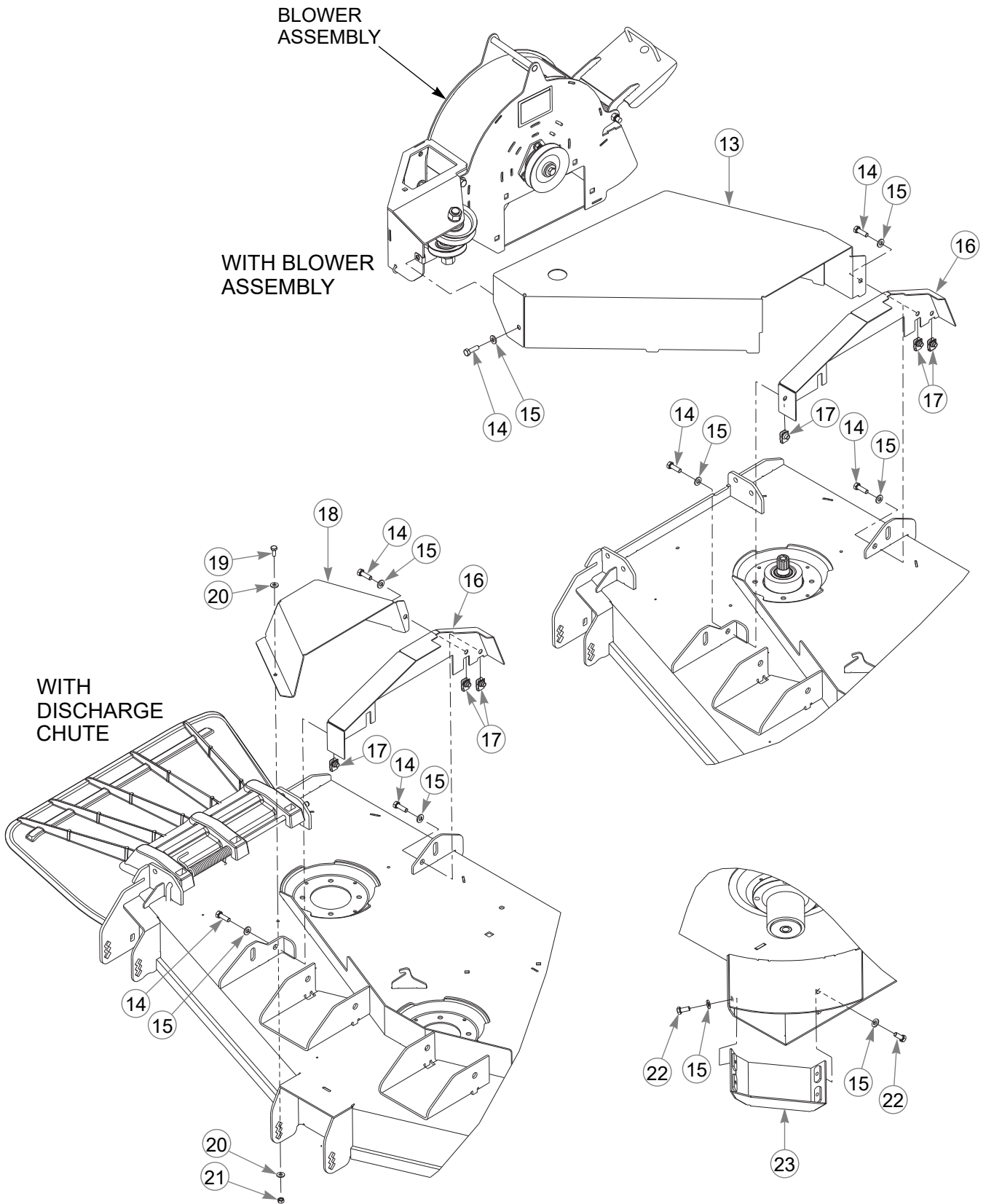


60" Catcher Adapter

INDEX NO.	PART NO.	QTY.	DESCRIPTION
1	036244	4	CS .375-16 X 1.00 HX G5
2	767954	15	FW .379 X .813 X .063
3	054502	4	NT .375-16 HX G5 ZN
4	025395	7	CB .375-16 X 1.00 G5 ZN
5	086660	7	NT .375-16 HX Z NL
6	121203	1	ADAPTER MOUNT
7	008573	1	CS 0.500-13 X 2.500 HX G5
8	752386	1	CW .515 X 2.25 X .204 BLK
9	601479	1	DOUBLE PULLEY
10	045765	1	FW 1.030 X 1.500 X 0.134
11	604661	1	PULLEY SPACER
12	604935	1	BELT HA SECTION 81.0" EL

NOTES:

60" Catcher Adapter

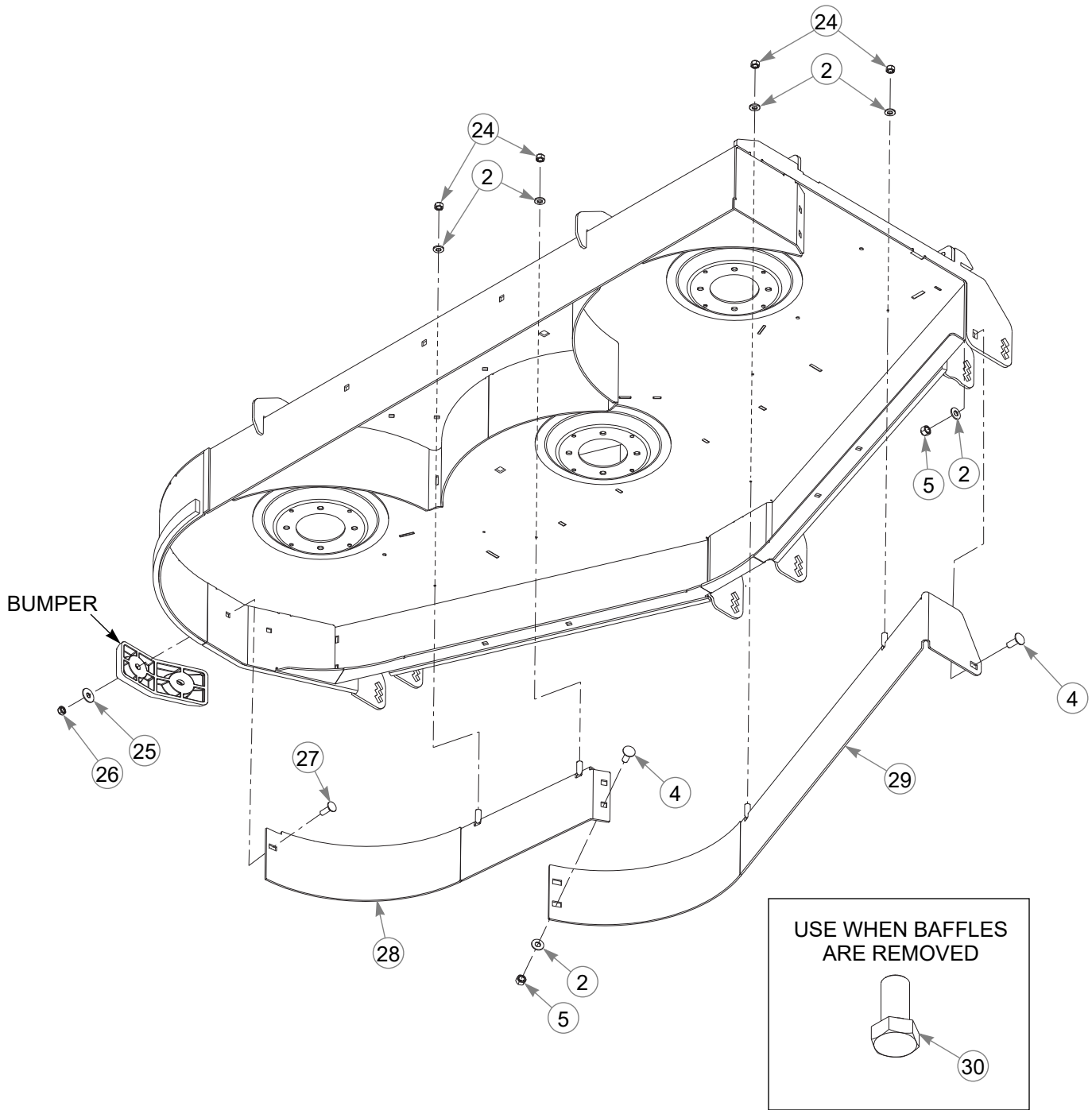


60" Catcher Adapter

INDEX NO.	PART NO.	QTY.	DESCRIPTION
13	121673	1	PULLEY COVER
14	036236	4	CS .312-18 X 1.00 HX G5
15	768523	6	FW .343 X .687 X .051/.080H
16	121412	1	CATCHER GUARD
17	601069	3	CN .312-18 X .20 MAX THK
18	121698	1	DOUBLE PULLEY COVER
19	064329	1	CS .250-20 X .625 HX G5
20	768515	2	FW .281 X .625 X .066
21	024927	1	NT .250-20 HX G5 ZN
22	034280	4	CS 0.312-18 X 0.750 HX G5
23	121816	1	CORNER SUPPORT

NOTES:

60" Catcher Adapter



60" Catcher Adapter

INDEX NO.	PART NO.	QTY.	DESCRIPTION
24	058776	4	NT .312-18 HX Z NL
25	079210	1	FW .344 X 1.00 X .06 ZN
26	604251	1	NT .312-18 HX NL JAM G2 ZN
27	037887	1	CB .312-18 X 1.00 FULL ZN
28	121490	1	LS FRONT BAFFLE
29	121491	1	RS FRONT BAFFLE
30	055822	4	CS .375-16 X .75 HX G5

NOTES:

INDEX

	PAGE		PAGE
Blower Drive Belt	5-2	Parts and Service	1-1
Blower Housing and Transfer Tube Maintenance	5-1	Storage	5-2
Blower Impeller	5-2	To The New Owner	1-1
Converting To Side Discharge Mode	4-2	Unloading the Catcher	4-1
Deck Adapter Kits	3-1	Using This Manual	1-1
Mower Deck Preparation	3-2	Vacuum Pickup and Collection	4-1
Mower Preparation	3-5	Warranty Registration	1-1
Packing List - Catcher	3-1		