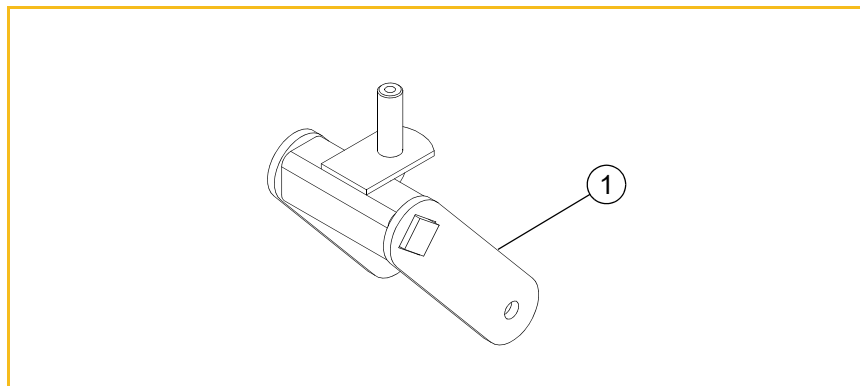


FLEX FORKS® KIT

PART NUMBER: 608313

PACKING LIST:

Listed below are parts included in this kit. If any parts are missing or damaged, please contact the Hustler® Parts Department. Retain these instructions for replacement parts.



INDEX NO.	DESCRIPTION	QTY
1	Flex Fork	2

IMPORTANT: Do not use Flex Forks® when a catcher is installed, as the Flex Forks® will not operate properly with the added weight.



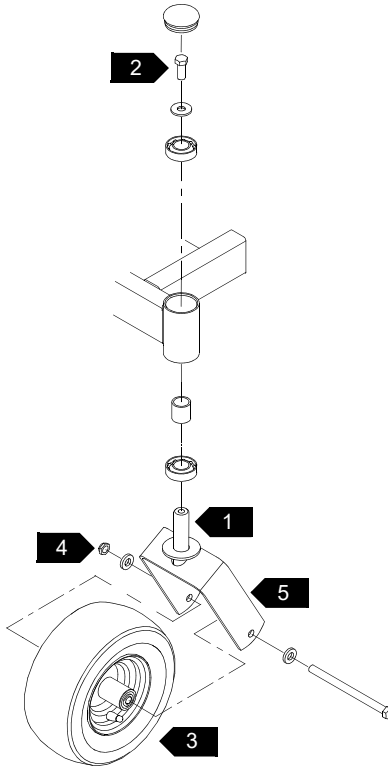
WARNING

Use only appropriate vehicle stands, with a minimum weight rating of 2000 pounds to block the unit up. Use in pairs only. Follow the instructions supplied with the vehicle stands.

ASSEMBLY:

1. Park the mower on a solid, level surface; set the park brakes; shut off the engine; and remove the ignition key. Disconnect the negative battery cable.

2. Raise and block the front of the deck up far enough that the front wheels and forks can be removed. Chock the drive wheels.
3. Remove the front wheel from the fork. FIG. 1
4. Remove the existing fork from the mower frame. FIG. 1
5. Attach the flex fork to the mower frame using the existing hardware. Make sure that all hardware is replaced exactly as it was removed. Apply one drop of Loctite® 243 to the bolt threads. Torque hardware as shown. FIG. 1
6. Attach the wheel to the new flex fork using the existing hardware. FIG. 1
7. Lower the mower.
8. Reconnect the negative battery cable.
9. Flex Forks® when first installed will raise the front of the mower about 1" depending upon which model they are on. It is not necessary to re-level the deck at this point. The Flex Forks® will settle after about 20 minutes of driving time. After operating for 20 minutes, if the Flex Forks® are still higher than the original forks were, the deck can be re-leveled. Refer to the unit's general service manual for deck leveling procedures.

**NOTES:**

1. Apply a thin layer of anti-seize, 006395, to the entire length of the caster pivot shaft before assembling it to the bearing.
2. Apply one drop of Loctite® 243 to the bolt threads. Torque to 75 ft-lbs (101.7 N•m).
3. Assemble so the valve stems are toward the outside.
4. Tighten the nut, then back it off until the wheel spins freely.
5. Standard forks are shown to show parts disassembly. Flex Forks® assembly requires that all parts be re-assembled as shown using the Flex Forks® in place of the standard forks.

FIG. 1