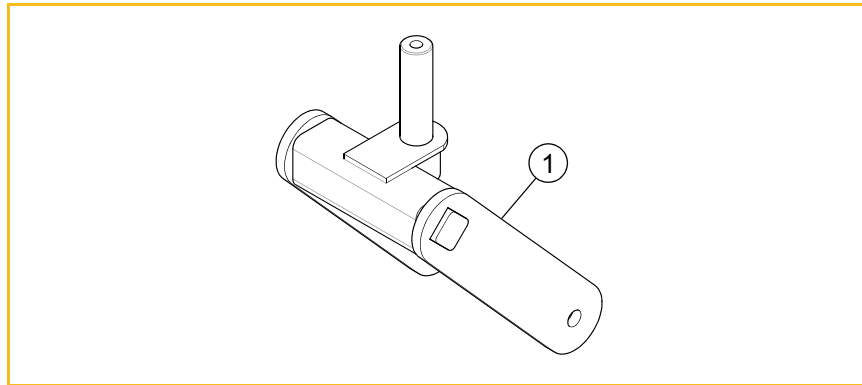


FLEX FORK KIT

PART NUMBER: 606670

PACKING LIST:

Listed below are parts included in this kit. If any parts are missing or damaged, please contact the Hustler® Parts Department. Retain these instructions for replacement parts.



INDEX NO.	DESCRIPTION	QTY
1	FLEX FORK	2



WARNING

Use only appropriate vehicle stands, with a minimum weight rating of 2000 pounds to block the unit up. Use in pairs only. Follow the instructions supplied with the vehicle stands.



ASSEMBLY:

1. Park the mower on a solid, level surface, set park brakes, shut-off engine and remove ignition key. Disconnect the negative battery cable.
2. Chock the back wheels, place the mower frame securely on jack stands and do not allow the machine to move.
3. Remove the front wheel and tire from the existing fork. Retain the hardware.

4. Remove the existing fork from the mower frame.
5. Attach the flex fork to the mower frame using the existing hardware. Make sure that all hardware is replaced exactly as it was removed. Reference the illustration for accurate part placement. Apply one drop of Loctite® 242 to the bolt threads. Torque the hardware as shown (FIG. 1).
6. Attach the wheel and tire to the new flex fork using the existing hardware. Tighten the nut, then back it off so the wheel spins freely.
7. Remove the jack stands and the wheel chocks.
8. Reconnect the negative battery cable. The mower is now ready to operate.

NOTE: Flex forks when first installed will raise the front of the mower about 1" depending upon which model they are on. It is not necessary to re-level the deck at this point. The flex forks will settle after about 20 minutes of driving time. After operating for 20 minutes, if the flex forks are still higher than the original forks were, the deck can be re-leveled. Refer to the unit's general service manual for deck leveling procedures.

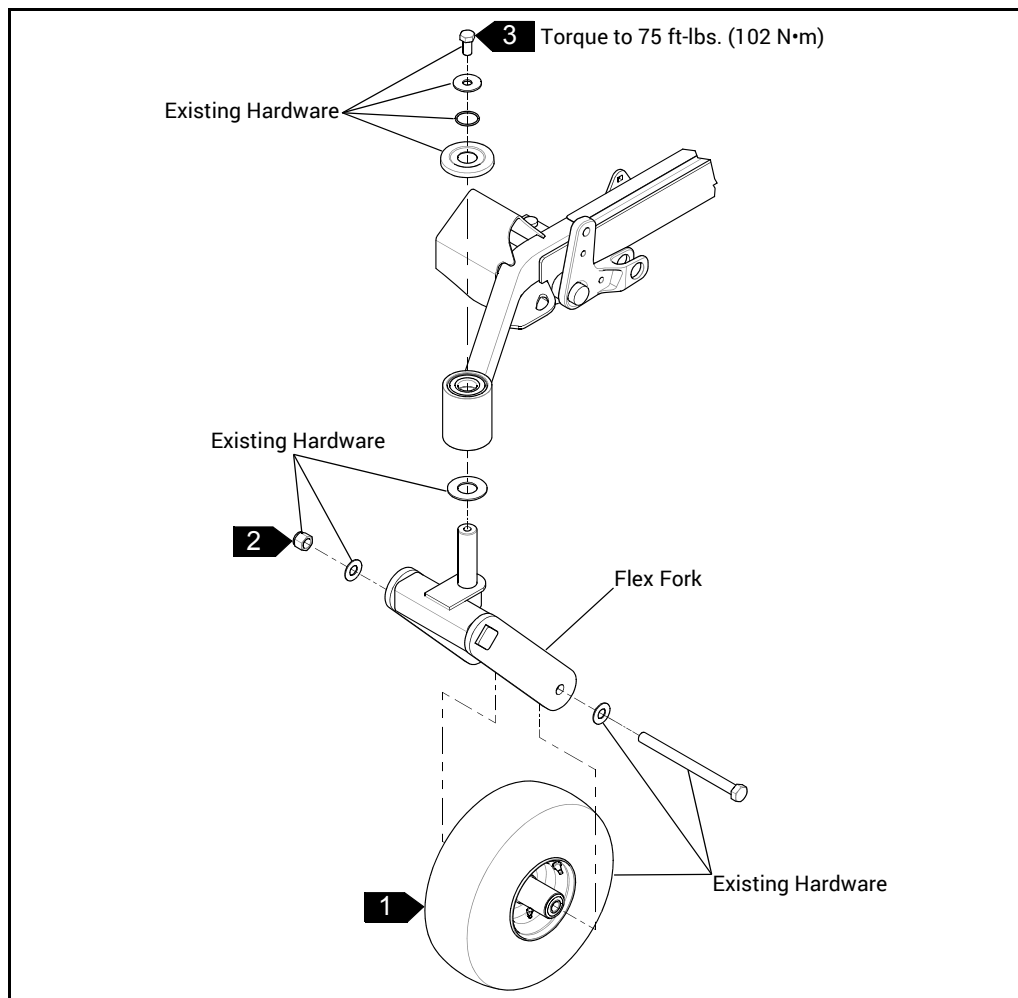


FIG. 1

1. Apply grease to zerks (see operator's manual).
2. Tighten nuts, then back off until the wheel spins freely.
3. Apply one drop of Loctite® 242 to threads.