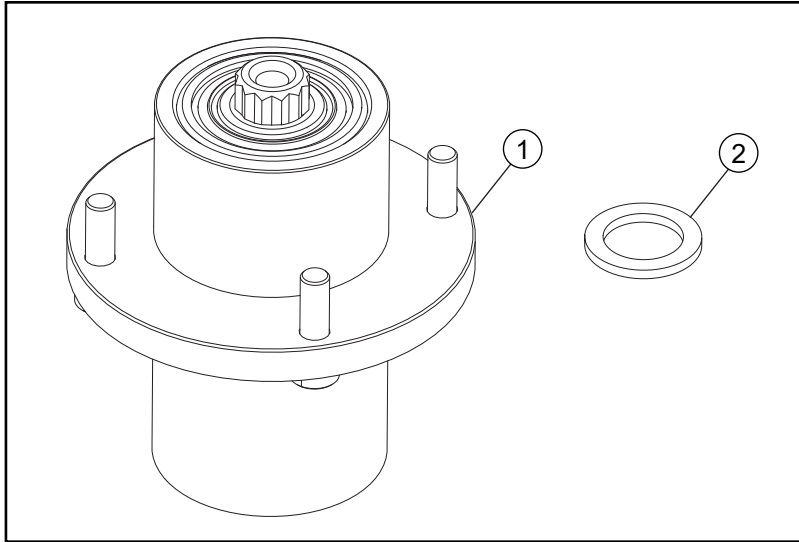


Packing List

Listed below are parts included in this kit. If any parts are missing or damaged, please contact Excel Parts Department. Retain these instructions for replacement parts.



INDEX NO.	PART NO.	DESCRIPTION	QTY
1	N/A	SPINDLE ASSEMBLY	1
2	045765	FW 1.030 X 1.50 X 0.13 HD ZY	1



WARNING



Use only appropriate vehicle stands, with a minimum weight rating of 2000 pounds to block the unit up. Use in pairs only. Follow the instructions supplied with the vehicle stands.

Assembly

1. Park the mower on a solid, level surface; set the park brakes; shut off the engine; and remove the ignition key. Disconnect the negative battery cable.
2. Remove the deck covers and the deck belt.
3. Raise the front of the mower to allow access to the underneath side of the deck. Place the mower securely on jack stands. Chock the rear drive wheels to prevent the mower from moving.



WARNING



Exercise caution when working under the deck as the mower blades are extremely sharp. Wrap the blade(s) or wear gloves when handling the blades.

4. Remove the existing spindle as shown. Keep or discard the existing hardware according to the illustration. Fig. 1
5. Install the spindle assembly to the deck using the existing hardware. Fig. 2

6. Install the pulley on the spindle using the existing hardware. Torque the bolt to 70 ft-lbs (95 N•m). Fig. 2



WARNING



Failure to correctly torque the bolt may result in the loss of the blade which can cause serious injury.

7. Install the blade on the spindle using the existing blade hardware. Torque the bolt to 118 ft-lbs (160 N•m). Fig. 2
8. Remove the jack stands, lower the mower.
9. Install the deck belt. Refer to the general service manual specific to the mower for deck belt routing and adjustment procedures.
10. Install the deck covers.



WARNING



Keep hands clear when pulling belt over the pulley to prevent pinching. Do not get hand or fingers between pulley and belt.

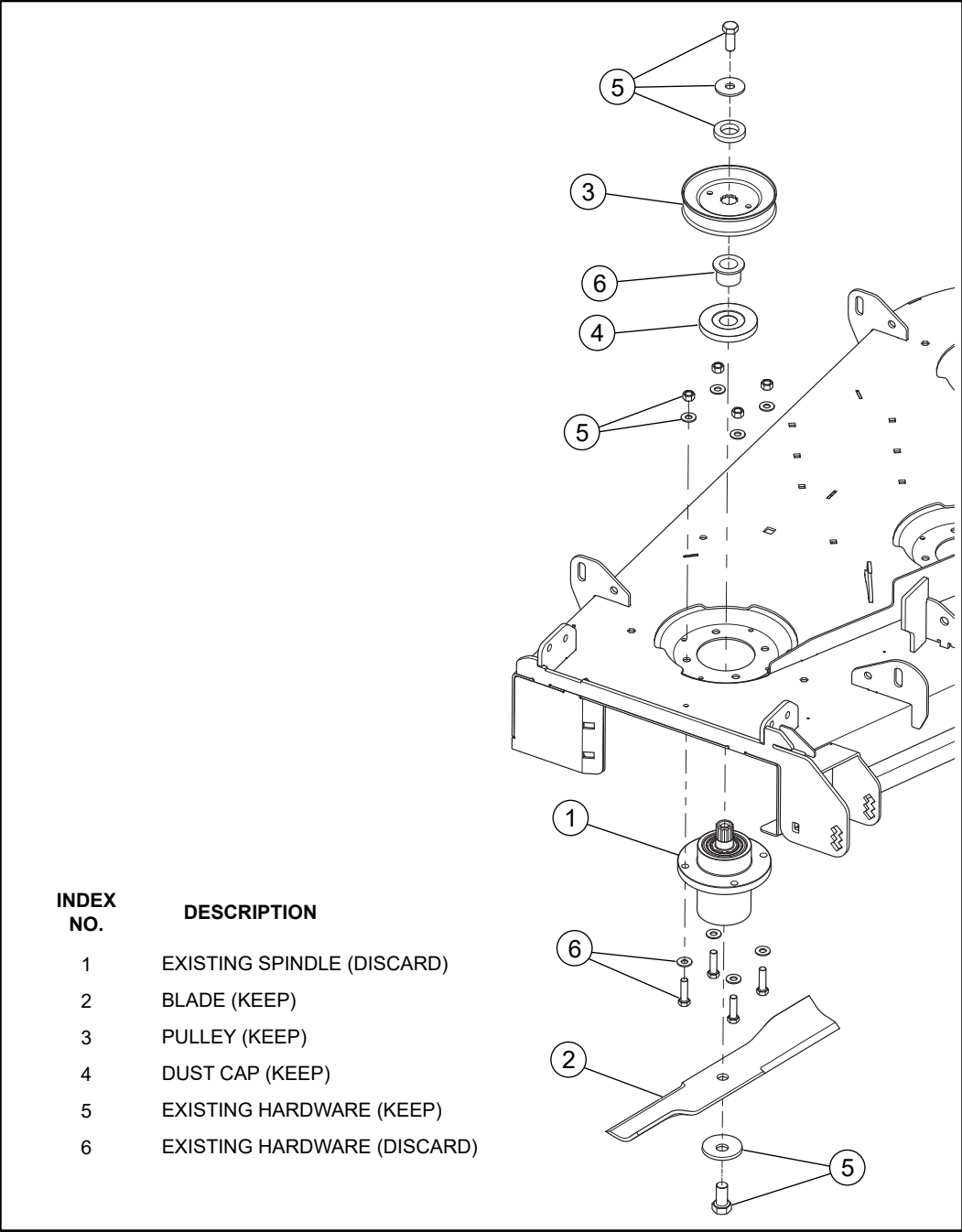


WARNING



Always keep safety shields and covers in place, except for servicing. Never operate the machine with pulley covers removed.

11. Connect the negative battery cable. The mower is ready for operation.



INDEX NO.	DESCRIPTION
1	EXISTING SPINDLE (DISCARD)
2	BLADE (KEEP)
3	PULLEY (KEEP)
4	DUST CAP (KEEP)
5	EXISTING HARDWARE (KEEP)
6	EXISTING HARDWARE (DISCARD)

FIG. 1

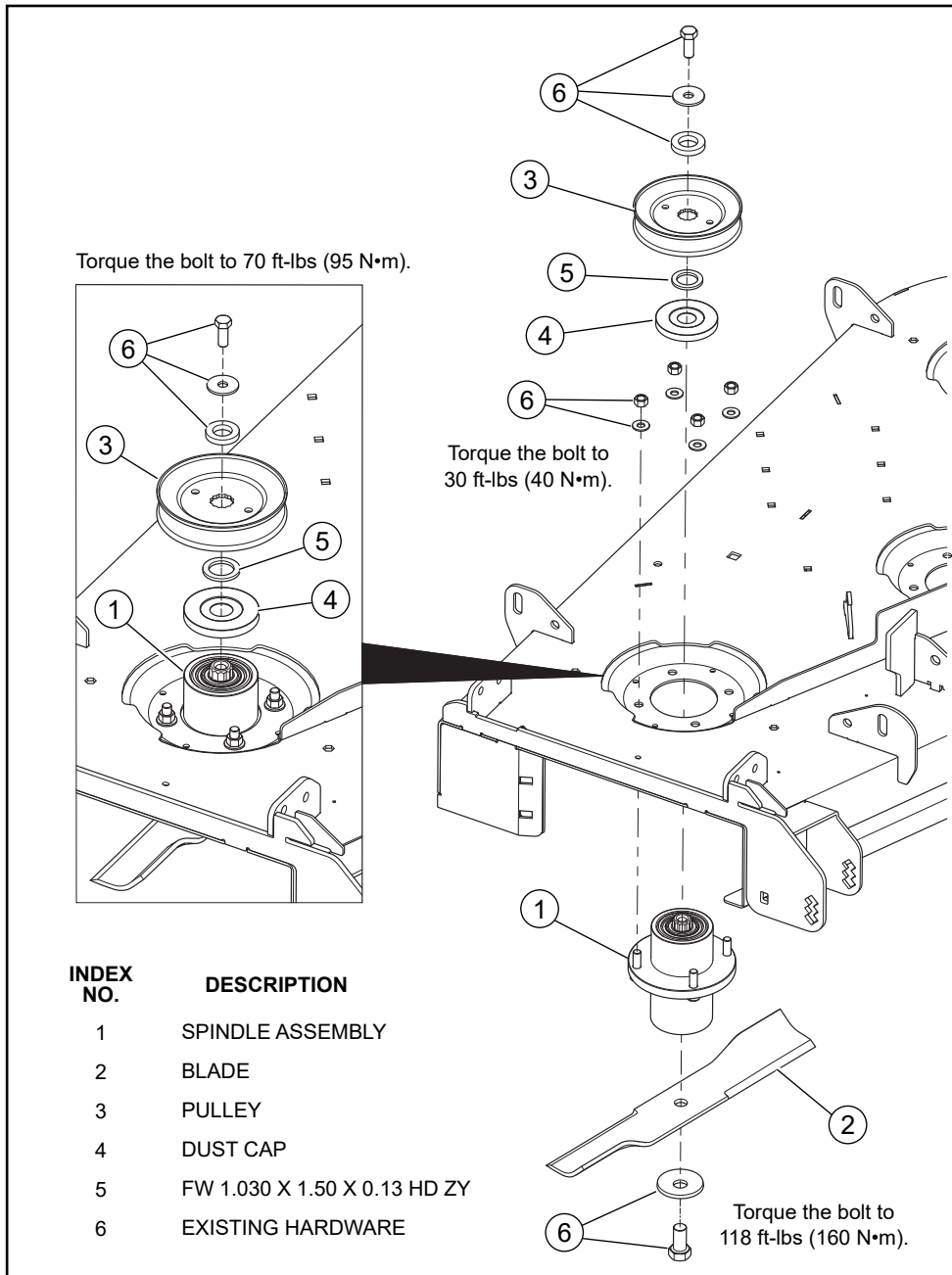


FIG. 2