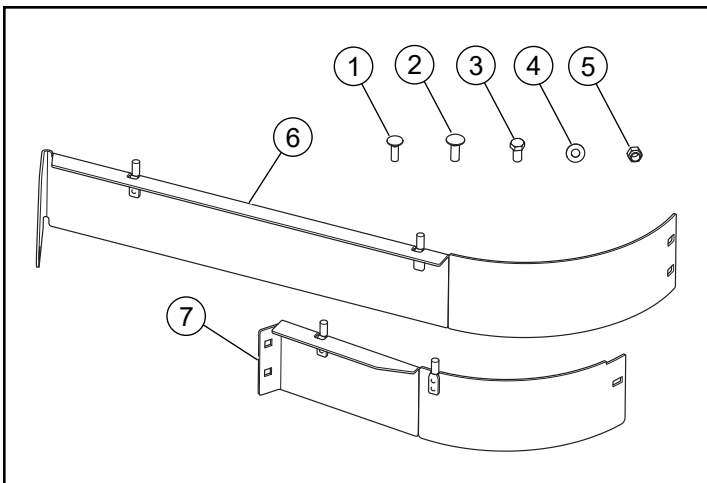


High Vacuum 48" Kit
Part Number 125129
High Vacuum 54" Kit
Part Number 126490
High Vacuum 60" Kit
Part Number 125132

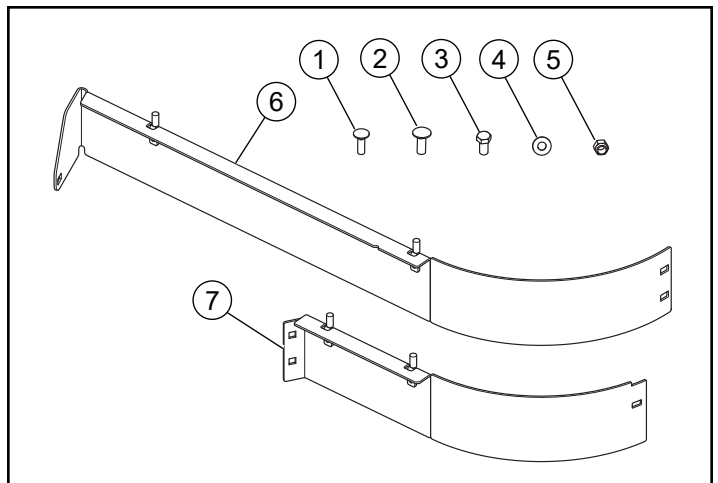
Instruction Number 125222

Packing List

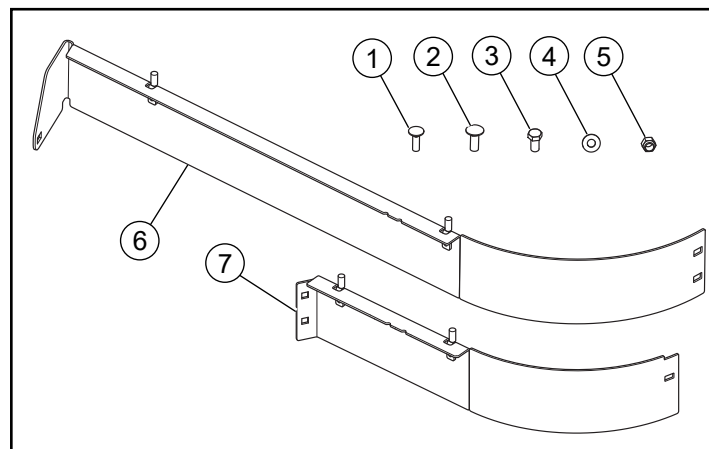
Listed below are parts included in this kit. If any parts are missing or damaged, please contact Excel Parts Department. Retain these instructions for replacement parts.



KIT 125129



KIT 126490



KIT 125132

INDEX NO.	PART NO.	DESCRIPTION	QTY
1	037887	CB .312-18 X 1.00 FUL Z	1
2	025395	CB .375-16 X 1.00 G5 ZN	3
3	055822	CS .375-16 X 0.75 HX G5 Z	4
4	767954	FW 0.379 X .82 X .06 HD Z	7
5	086660	NT .375-16 NL G8	7
6	121495	BAFFLE, FRONT RH (48" DECK)	1
	121493	BAFFLE, FRONT RH (54" DECK)	
	121491	BAFFLE, FRONT RH (60" DECK)	
7	125130	BAFFLE, FRONT LH (48" DECK)	1
	126491-3	BAFFLE, FRONT LH (54" DECK)	
	125133	BAFFLE, FRONT LH (60" DECK)	



WARNING



Use only appropriate vehicle stands, with a minimum weight rating of 2000 pounds to block the unit up. Use in pairs only. Follow the instructions supplied with the vehicle stands.

Assembly

1. Park the mower on a solid, level surface; set the park brakes; shut-off the engine; and remove the ignition key. Disconnect the negative battery cable.
2. Raise the front of the mower and block it up high enough to allow the kit to be installed from the underneath side of the deck. Chock the drive wheels to prevent the mower from moving.



WARNING



Use caution when working under the deck as mower blades are sharp and can cut.

3. Locate the four pilot holes shown in Fig. 1, Fig. 2 & Fig. 3. Enlarge the pilot holes using a .406" diameter drill bit.

48" DECK

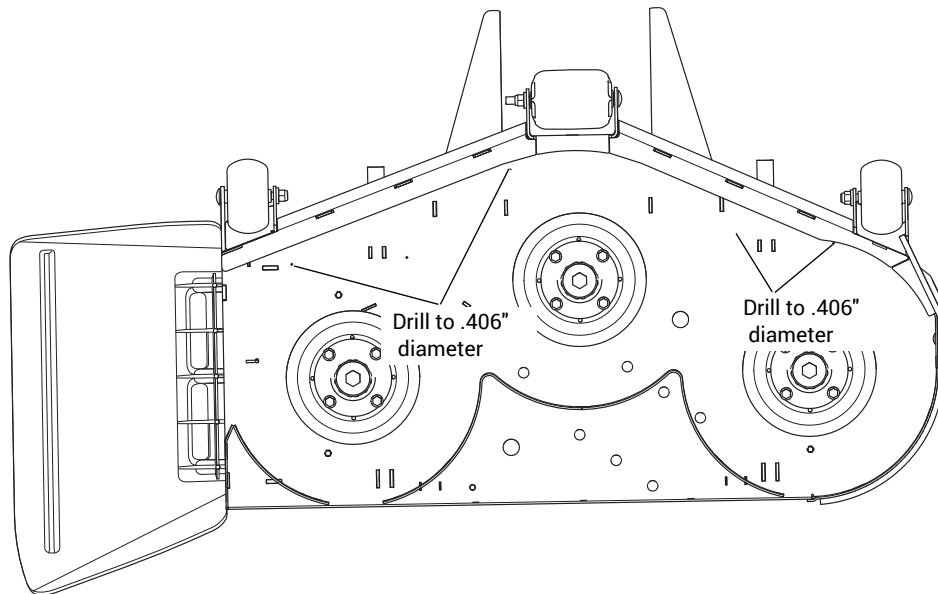


FIG. 1

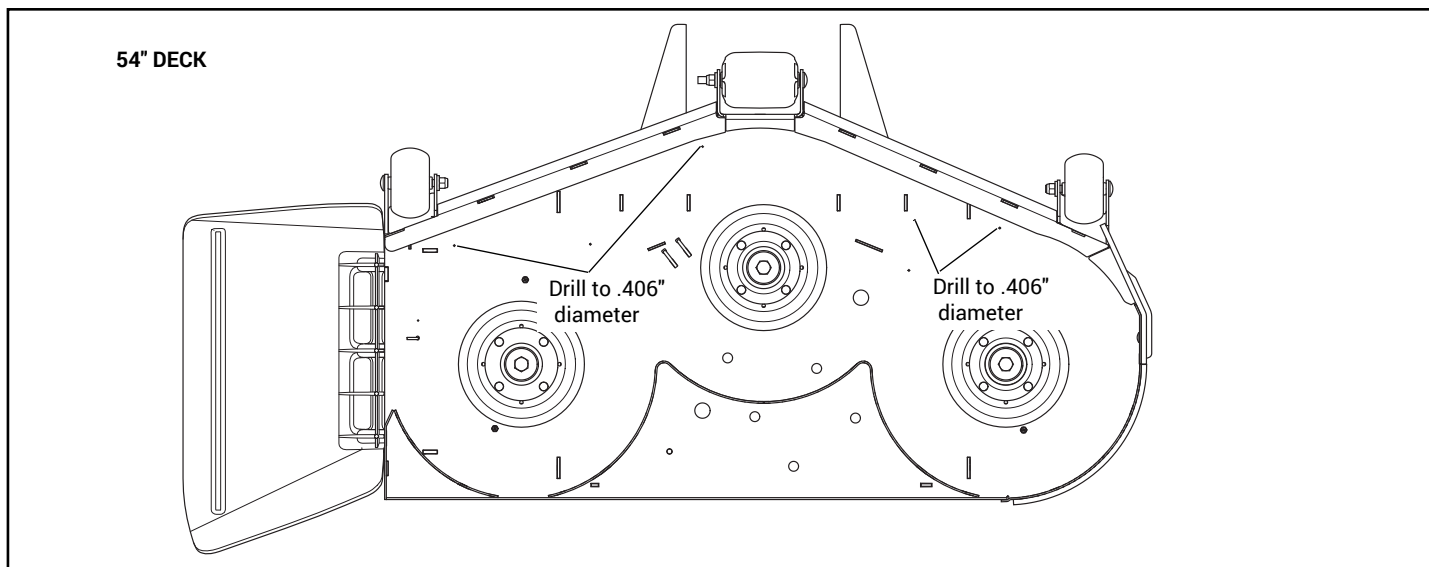


FIG. 2

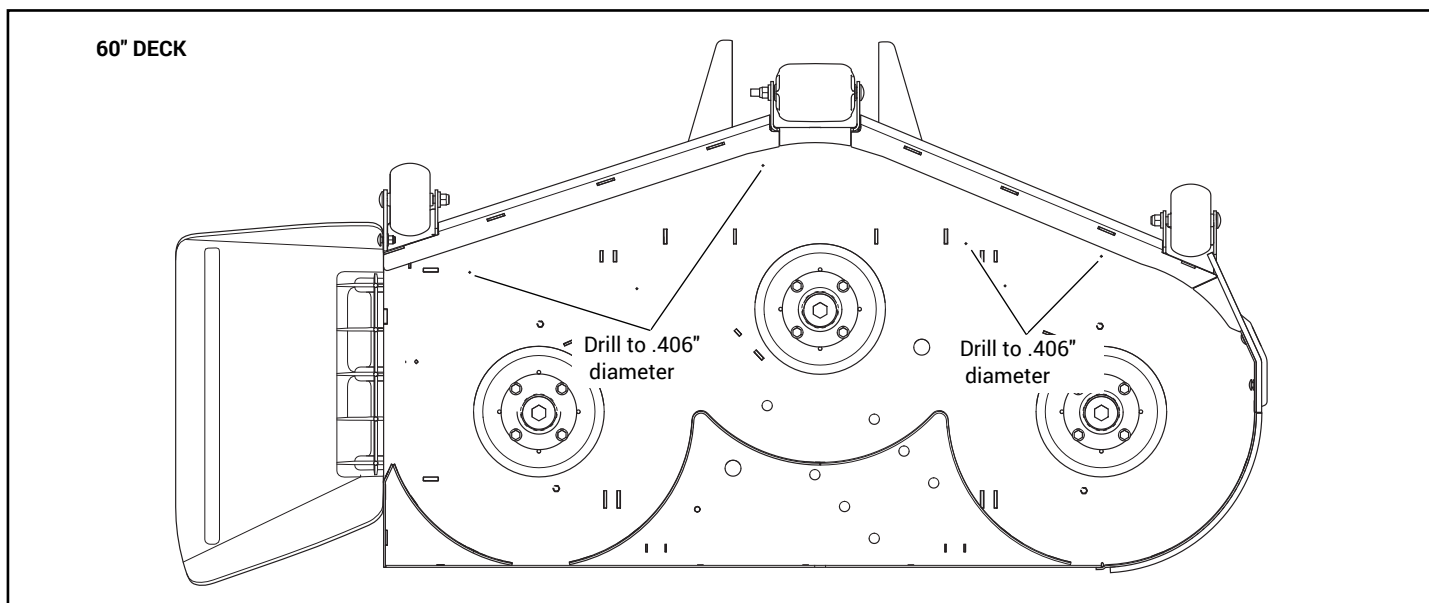
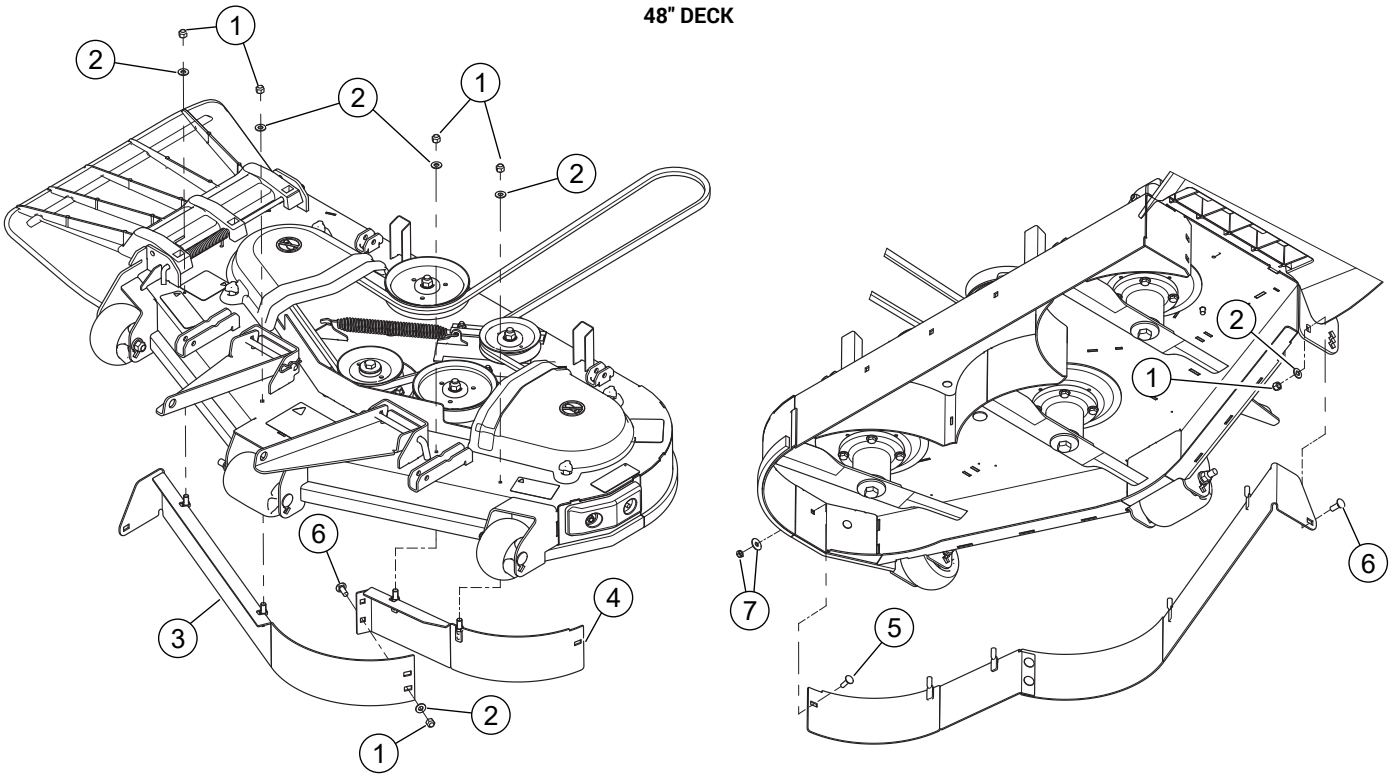


FIG. 3

4. Remove the rear bolt, nut, and flat washer from the left bumper. Fig. 4, Fig. 5 & Fig. 6
NOTE: Keep this hardware, as it will be reused.
5. Attach the front left baffle to the top of the deck. Using the hardware shown, attach the baffle to the left bumper. Fig. 4, Fig. 5 & Fig. 6
6. Attach the front right baffle to the top of the deck as shown. Fig. 4, Fig. 5 & Fig. 6
7. Attach the two baffles together. Fig. 4, Fig. 5 & Fig. 6
8. Rotate the blades to make sure that they are not hitting the baffles.
9. Raise the front of the mower and remove the jack stands.
10. Lower the front of the mower and remove the wheel chocks.
11. Reconnect the negative battery cable.

48" DECK

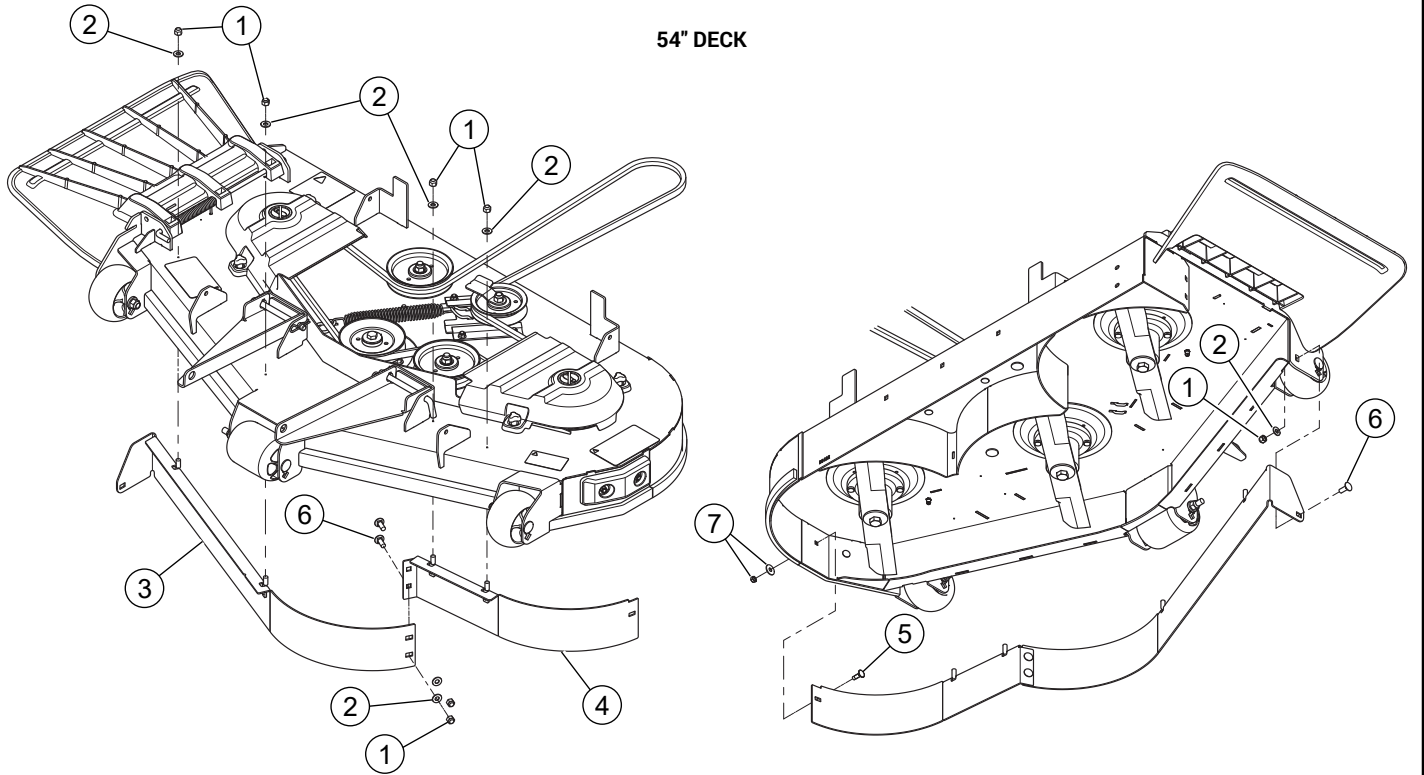


INDEX NO.	DESCRIPTION	QTY
1	NT .375-16 NL G8	7
2	FW 0.379 X .82 X .06 HD Z	7
3	BAFFLE, FRONT RH	1
4	BAFFLE, FRONT LH	1

INDEX NO.	DESCRIPTION	QTY
5	CB .312-18 X 1.000 FUL Z	1
6	CS .375-16 X 0.75 HX G5 Z	3
7	EXISTING HARDWARE	

FIG. 4

54" DECK



INDEX NO.	DESCRIPTION	QTY
1	NT .375-16 NL G8	7
2	FW 0.379 X .82 X .06 HD Z	7
3	BAFFLE, FRONT RH	1
4	BAFFLE, FRONT LH	1

INDEX NO.	DESCRIPTION	QTY
5	CB .312-18 X 1.000 FUL Z	1
6	CS .375-16 X 0.75 HX G5 Z	3
7	EXISTING HARDWARE	

FIG. 5

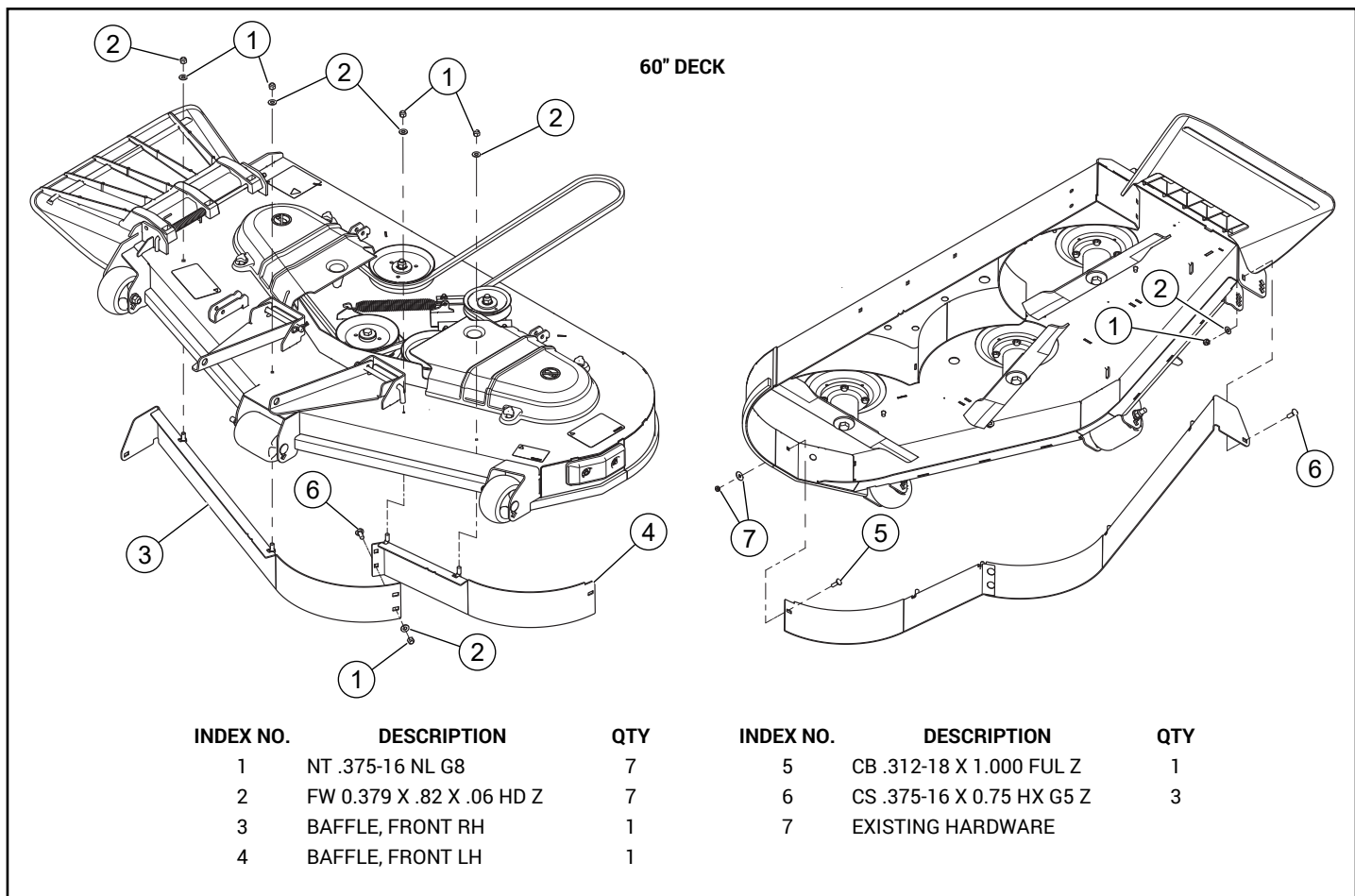


FIG. 6

Removing the High Vacuum Kit

If you decide to remove the baffles for any reason, follow this procedure to remove the high vacuum kit.

1. Park the mower on a flat surface. Place the deck clutch switch in the "OFF" (disengaged) position. Place the steering control levers in the park brake position. Shut off the engine and remove the key from the ignition switch. Disconnect the negative battery cable.
2. Raise the front of the mower and block it up high enough to allow the baffles to be removed from the underneath side of the deck. Chock the drive wheels to prevent the mower from moving.



WARNING



Use caution when working under the deck as mower blades are sharp and can cut.

3. Remove the baffles from the underneath side of the deck. Fig. 7
4. It will be necessary to plug the holes that are left open in the top of the deck when the baffles are removed. Use the .375-16 x .75 cap screws that are furnished with this kit and the existing flat washers and .375 nuts to plug these holes. Fig. 8

NOTE: Make sure that the left bumper is re-attached.



WARNING



Close the baffle mounting holes to prevent debris escaping from the underneath side of the deck.

- If the discharge chute was removed - Assemble the torsion spring, the original discharge chute, and pin to the deck. Make sure that the torsion spring is assembled as shown so that it applies pressure to the discharge chute and keeps it in the down position. Fig. 9



Never operate the mower deck with the side deflector removed or in raises position except when the entire mulching system is being used.

- Raise the front of the mower and remove the jack stands.
- Lower the front of the mower and remove the wheel chocks.
- Reconnect the negative battery cable.

48" DECK SHOWN. BLADES REMOVED FOR CLARITY.
(54" & 60" DECKS SIMILAR)

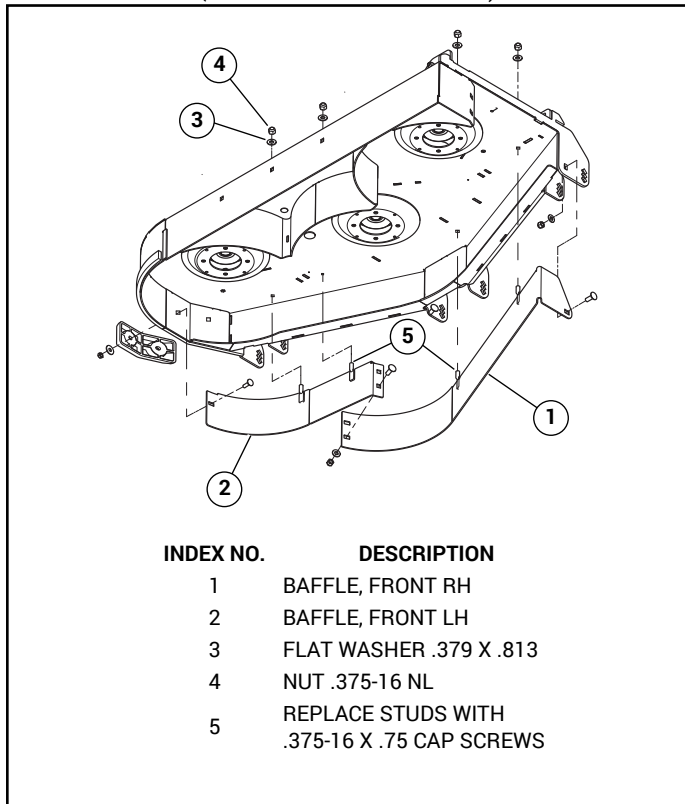


FIG. 7

48" DECK SHOWN. BLADES REMOVED FOR CLARITY.
(54" & 60" DECKS SIMILAR)

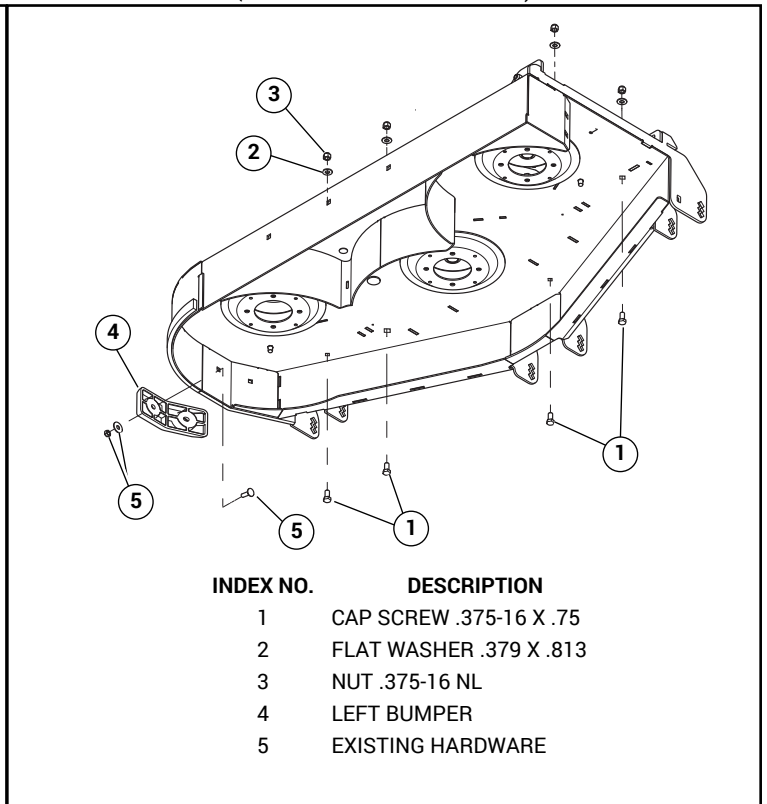


FIG. 8

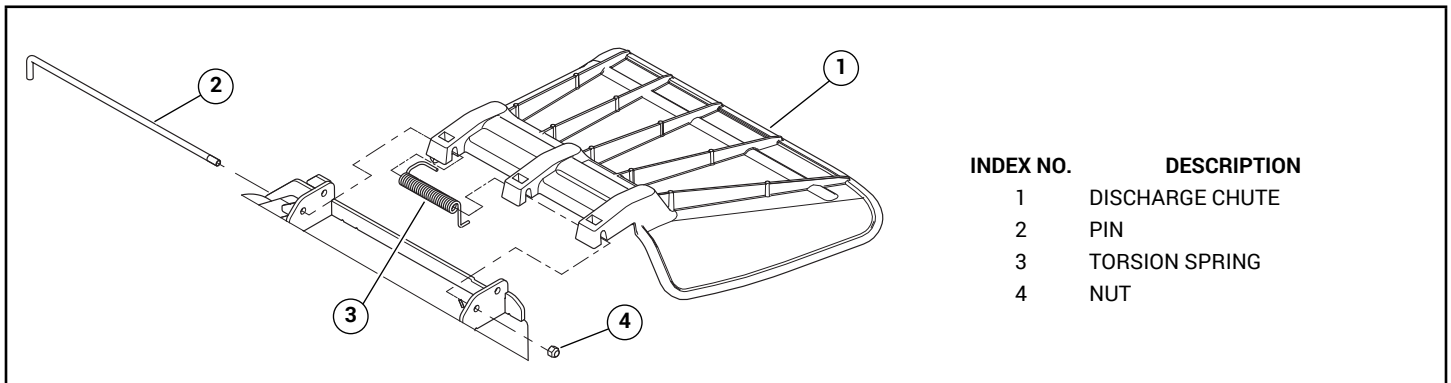


FIG. 9