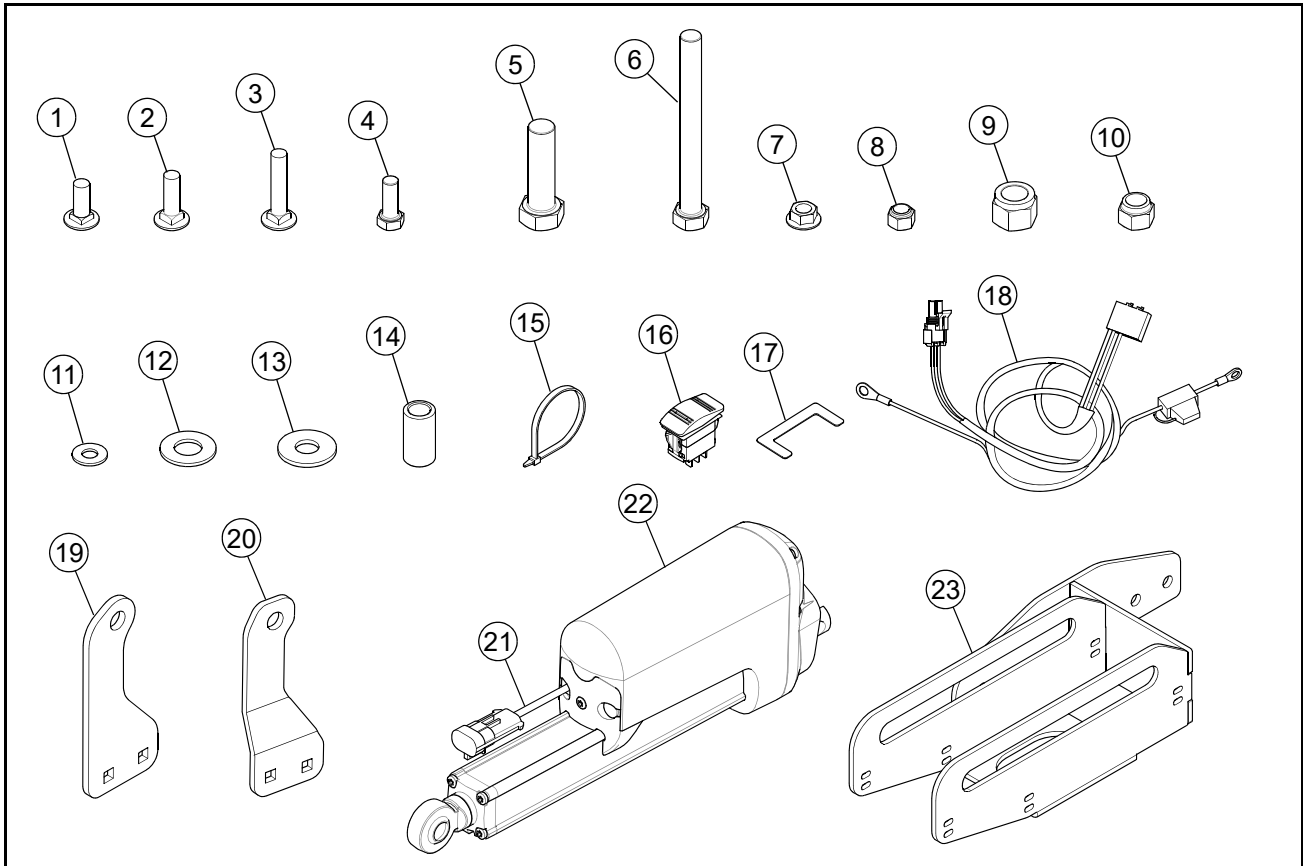


Packing List

Listed below are parts included in this kit. If any parts are missing or damaged, please contact Excel Parts Department. Retain these instructions for replacement parts.



INDEX NO.	PART NO.	DESCRIPTION	QTY.	INDEX NO.	PART NO.	DESCRIPTION	QTY.
1	025395	CB .375-16 X 1.00 G5 ZN	1	13	017137	FW .560 SAE	2
2	603113	CB .375-16 X 1.25 G5 ZN	2	14	606597	SPACER	2
3	606935	CB .375-16 X 1.75 STD G5	2	15	000331	WIRE TIE	6
4	036244	CS .375-16 X 1.00 HX G5	2	16	606591	ROCKER SWITCH	1
5	601983	CS .625-11 X 2.25 HX G5 Z	1	17	606594	DECAL	1
6	051151	CS .500-13 X 5.00 HX G5	1	18	606937	WIRE HARNESS	1
7	016899	NT .375-16 HX G5 FLK	2	19	123535	ACTUATOR LEVER	1
8	086660	NT .375-16 G5 NL	3	20	124470-3	ACTUATOR LEVER, FORMED	1
9	058768	NT .625-11 HXZ NY	1	21	606601	ACTUATOR HARNESS, SVC	1
10	781567	NT .500-13 NL	1	22	606595	ACTUATOR	1
11	767954	FW .379 X .813 X .063	5	23	123539	ACTUATOR MOUNT	1
12	728030	FW .656 X 1.312 X .090 ZN	2				

## Assembly

1. Park the mower on a solid, level surface; set the park brakes; shut-off the engine; and remove the ignition key. Disconnect the negative battery cable.
2. Place the deck in the transport position.
3. Locate the mower's left frame cover and remove the front mounting cap screw, flat washer and clip nut. Discard this hardware. Fig. 1
4. Remove the hardware from the rear of the steering box. Fig. 1

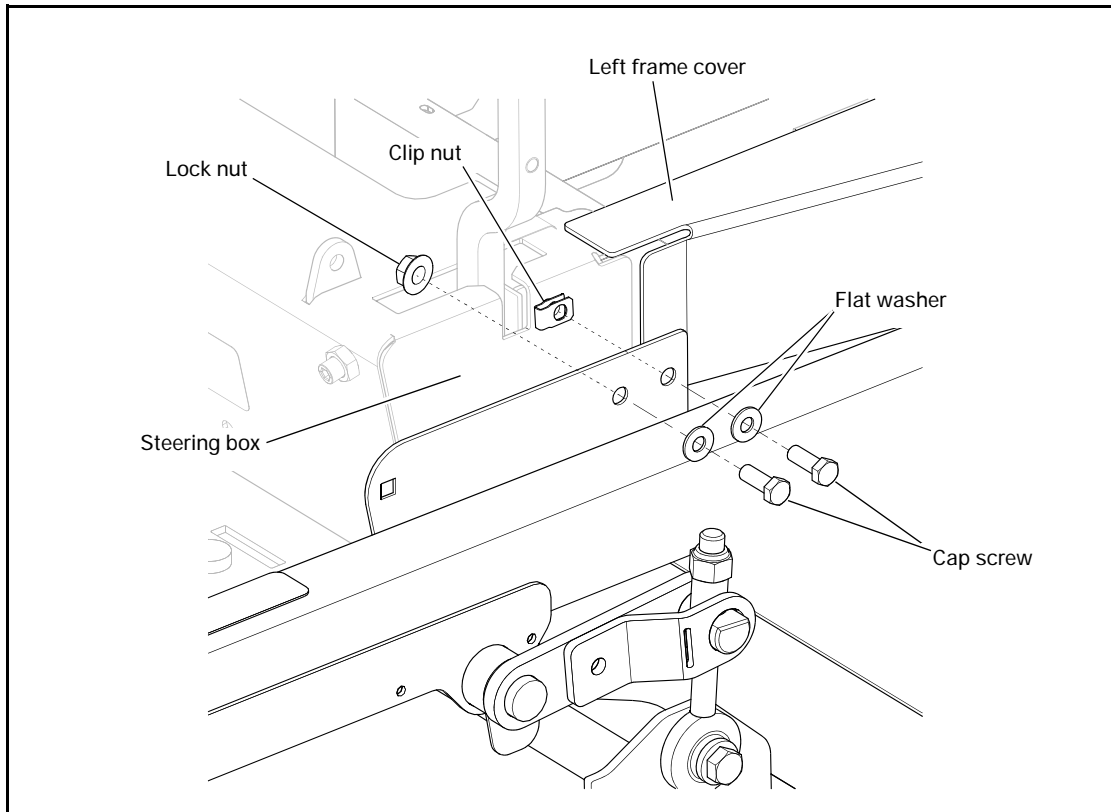
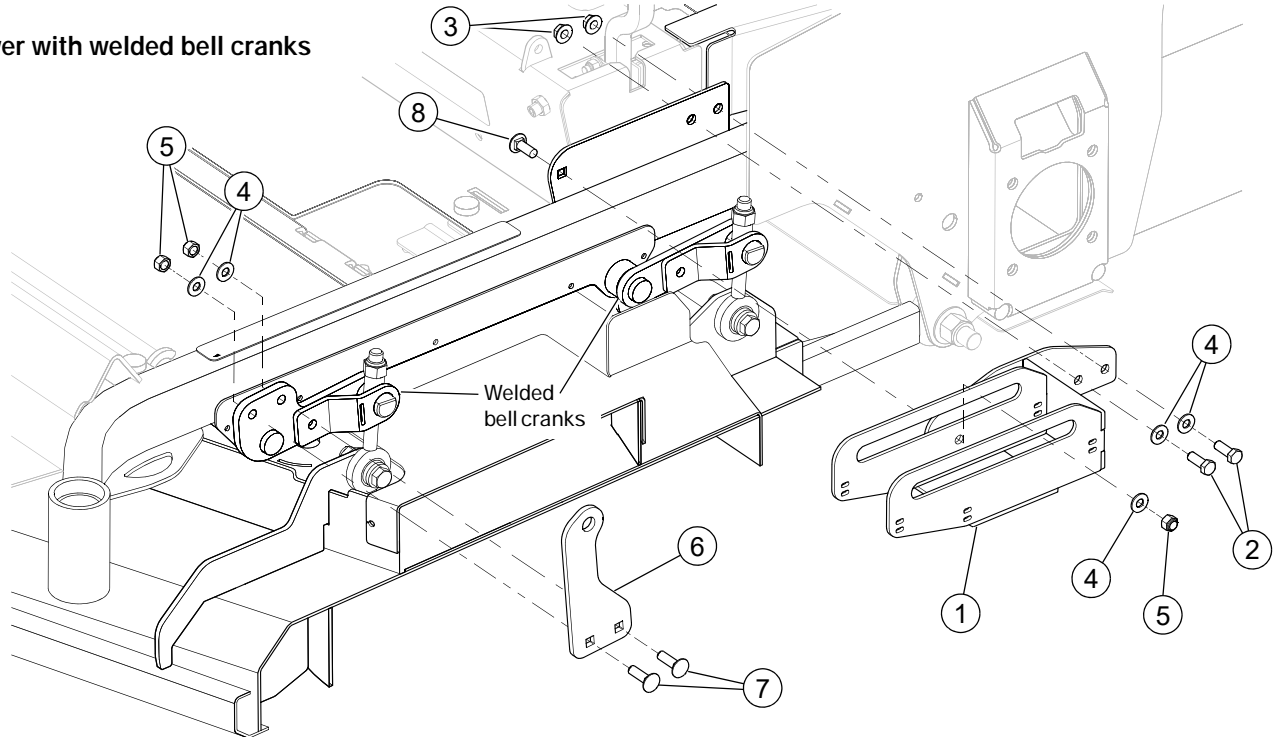


FIG. 1

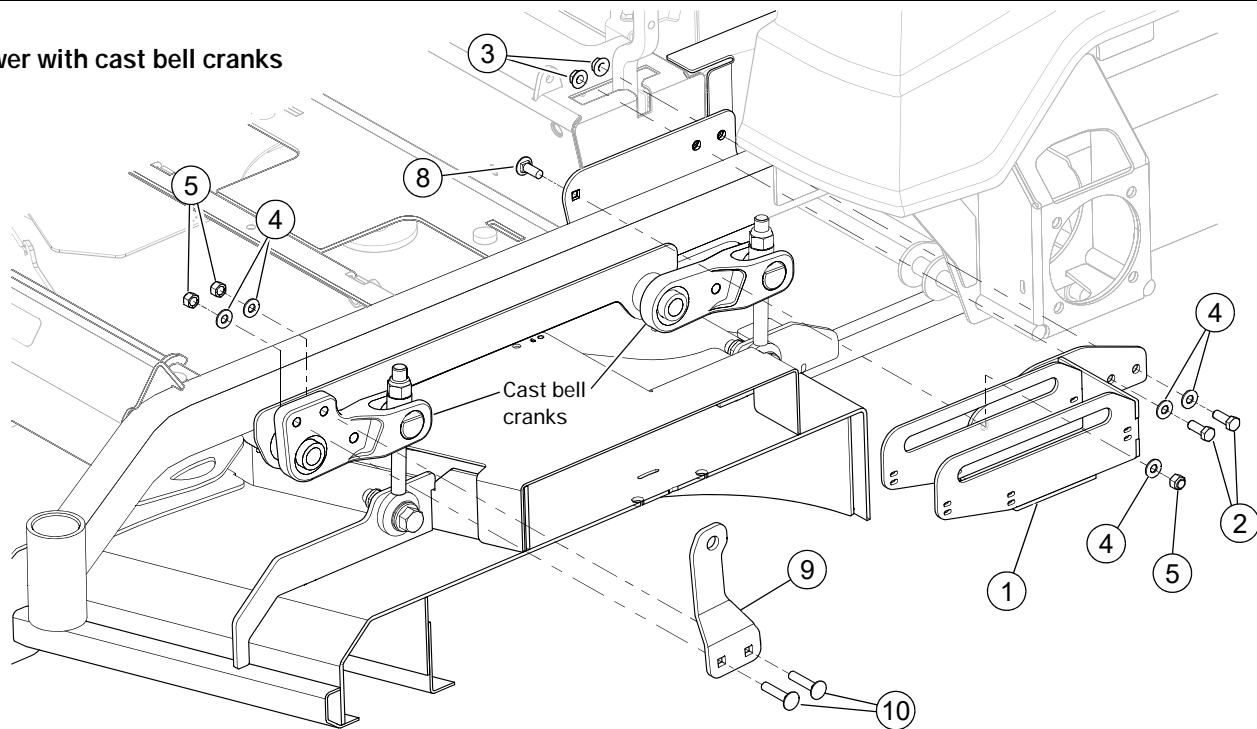
**NOTE:** There are two styles of bell cranks. Follow the instructions that apply to your mower.

5. Attach the actuator mount to the mower frame. Fig. 2
6. Attach the actuator lever to the front deck lift linkage. Fig. 2

Mower with welded bell cranks



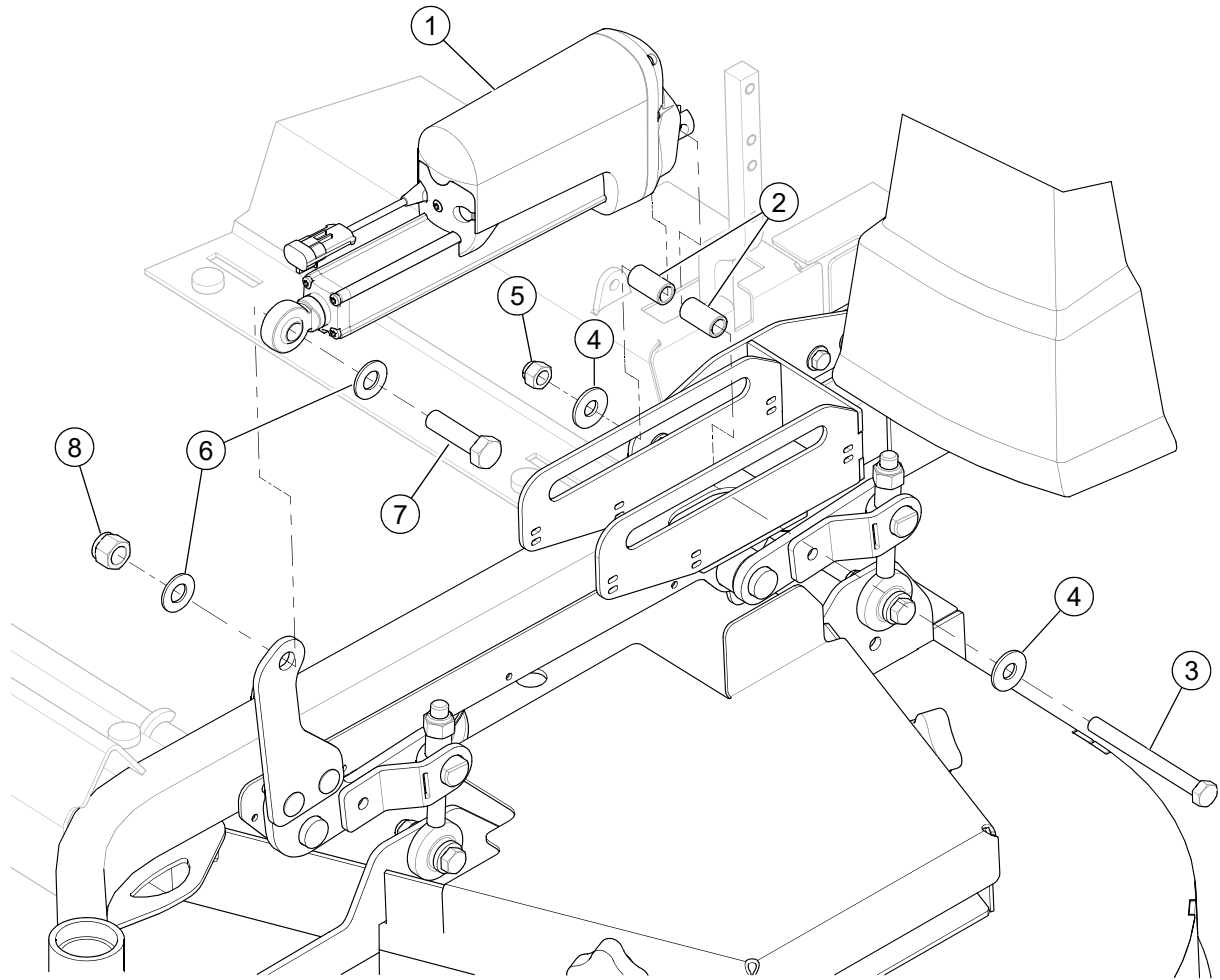
Mower with cast bell cranks



INDEX NO.	PART NO.	DESCRIPTION	INDEX NO.	PART NO.	DESCRIPTION
1	123539	ACTUATOR MOUNT	6	123535	ACTUATOR LEVER
2	036244	CS .375-16 X 1.00 HX G5	7	603113	CB .375-16 X 1.25 G5 ZN
3	016899	NT .375-16 HX G5 FLK	8	025395	CB .375-16 X 1.00 G5 ZN
4	767954	FW .379 X .813 X .063	9	124470-3	ACTUATOR LEVER, FORMED
5	086660	NT .375-16 G5 NL	10	606935	CB .375-16 X 1.75 STD G5

FIG. 2

7. Attach the actuator to the actuator mount. Fig. 3
8. Attach the actuator cylinder end to the actuator lever. Fig. 3



INDEX NO.	PART NO.	DESCRIPTION	INDEX NO.	PART NO.	DESCRIPTION
1	606595	ACTUATOR	5	781567	NT .500-13 NL
2	606597	SPACER	6	728030	FW .656 X 1.312 X .090 ZN
3	051151	CS .500-13 X 5.00 HX G5	7	601983	CS .625-11 X 2.25 HX G5 Z
4	017137	FW .560 SAE	8	058768	NT .625-11 HXZ NY

FIG. 3

9. Remove the control panel from the right fuel tank.
10. Locate the auxiliary connector body under the control panel and remove the cap. Fig. 4
11. Plug the actuator harness into the auxiliary connector. Fig. 5

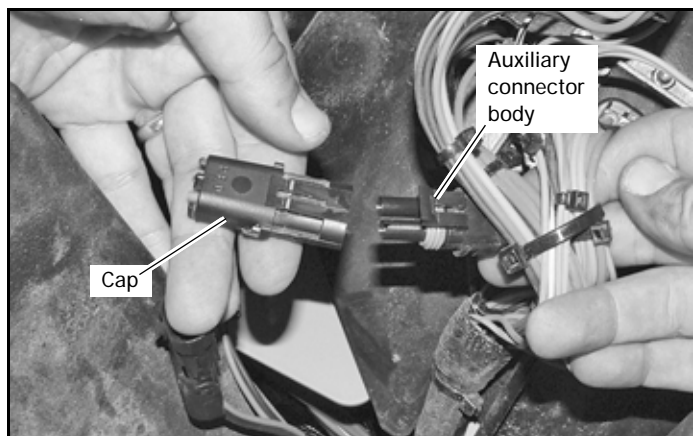


FIG. 4

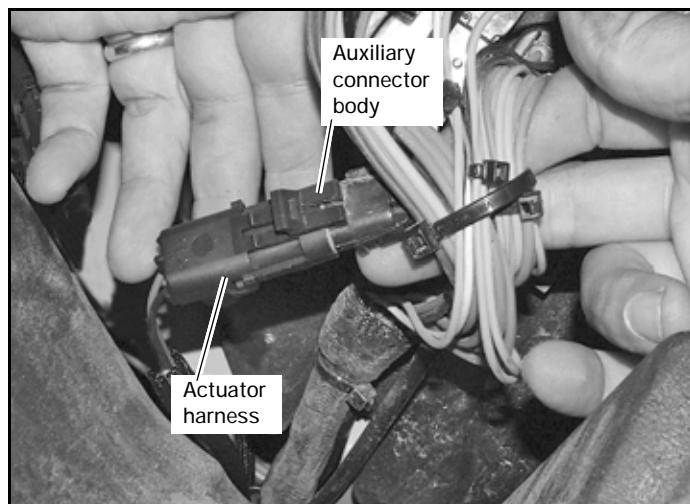


FIG. 5

12. Determine the style of control panel on the mower. Locate the appropriate slot in the control panel. Cut and remove the part of the control panel decal that covers the slot. Fig. 6

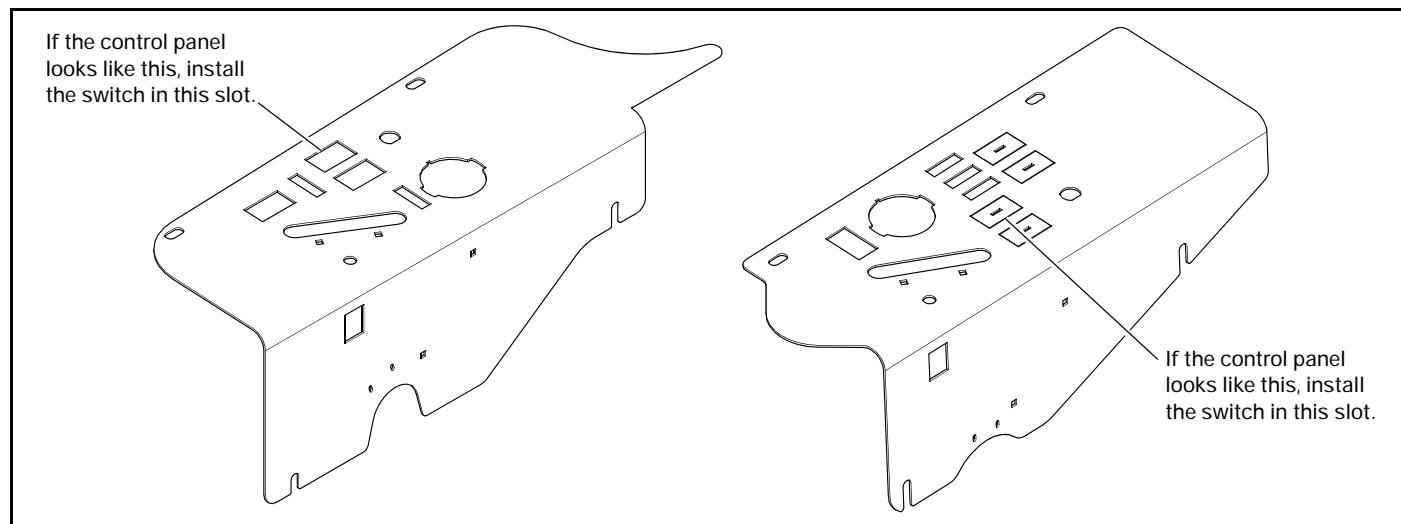


FIG. 6

13. Remove the knockout in the control panel. Fig. 7
14. Position the switch as shown and insert it into the slot. The switch will snap into place. Fig. 7

**IMPORTANT:** If the switch is not installed correctly the deck lift actuator will not work properly.

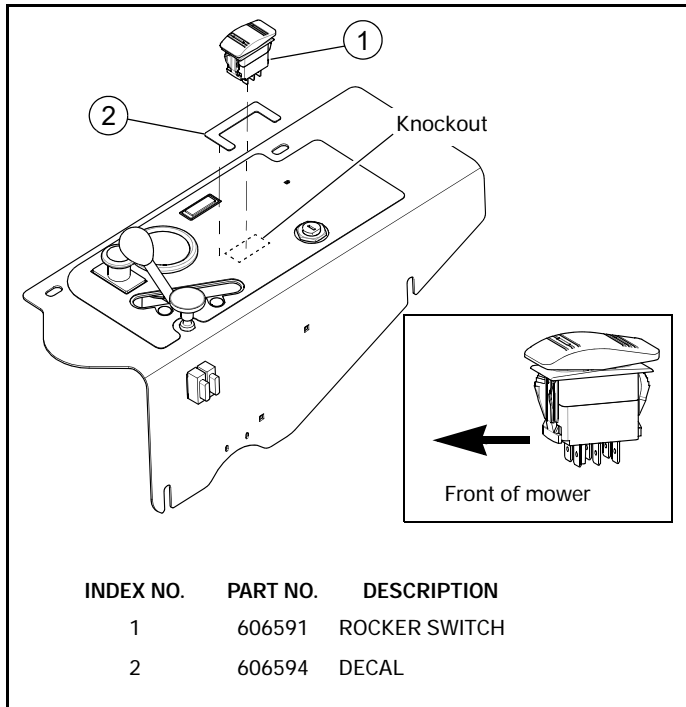


FIG. 7

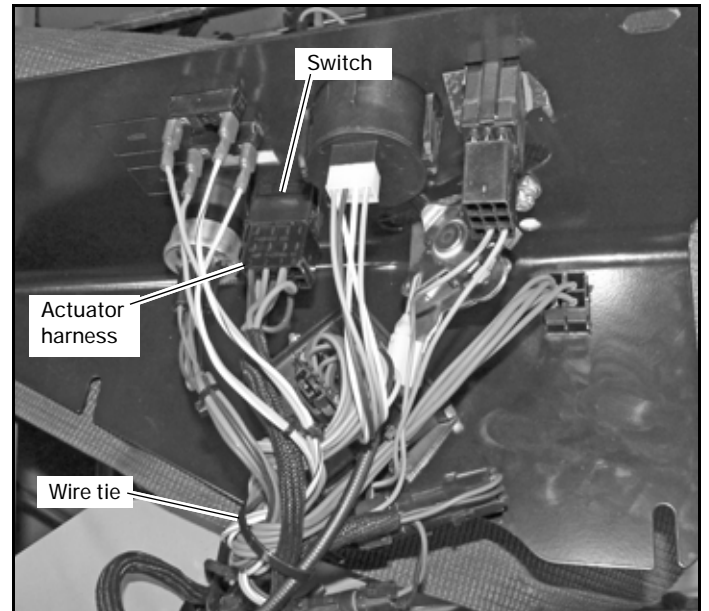


FIG. 8

15. Plug the actuator harness into the switch. Fig. 8
16. Secure the actuator harness to the mower harness using a wire tie. Fig. 8
17. Route all of the wire harnesses out from under the control panel through the harness opening in the control panel and attach the control panel back into place.
18. Put the switch decal in place on top of the control panel around the switch. Fig. 7
19. Route the actuator harness along the mower frame as shown. Fig. 9, Fig. 10
20. Plug the actuator harness into the actuator connector. Fig. 9, Fig. 10
21. Attach the positive (orange) wire connector to the positive battery post. Fig. 9, Fig. 10
22. Attach the negative (black) wire connector to the negative battery post. Fig. 9, Fig. 10
23. Secure the actuator harness to the mower frame using the wire ties as shown. Fig. 9, Fig. 10

**NOTE:** If there are no holes in the rear battery support crossmember of the mower, drill a 1/4" diameter hole in the approximate locations shown. Fig. 9

24. Connect the negative battery cable.

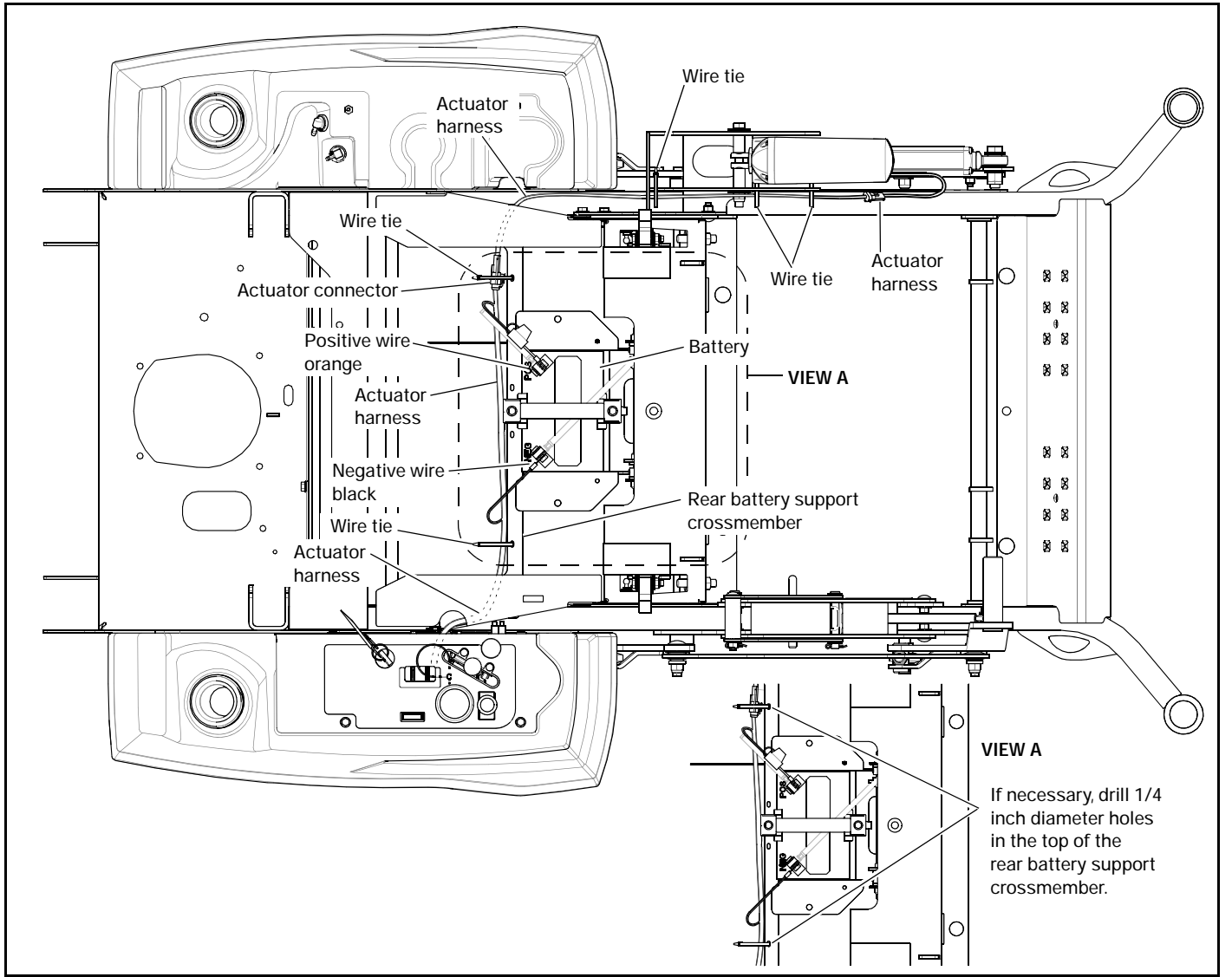


FIG. 9

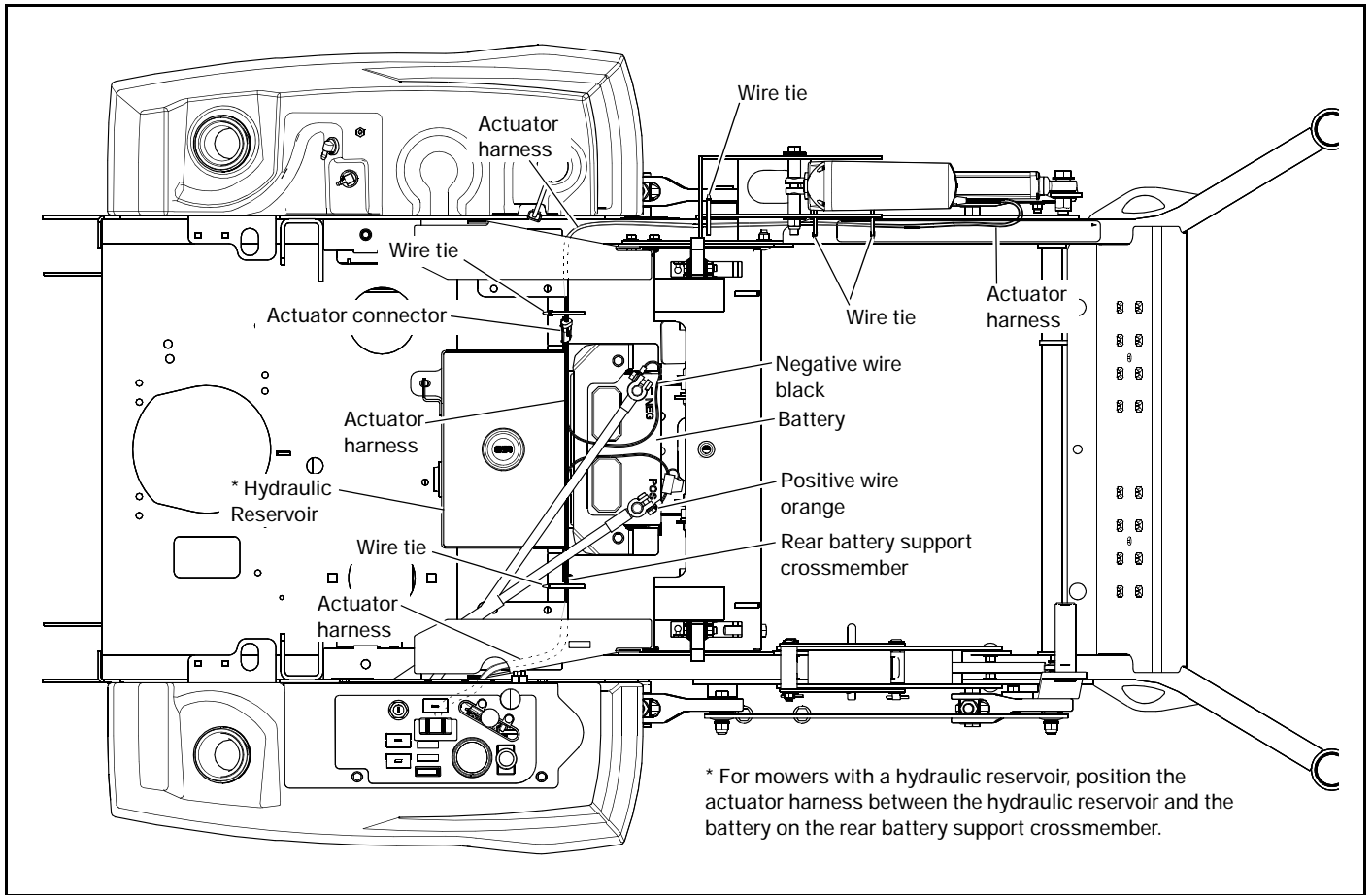


FIG. 10

## Testing

Test the performance of the deck lift switch after assembly is complete.

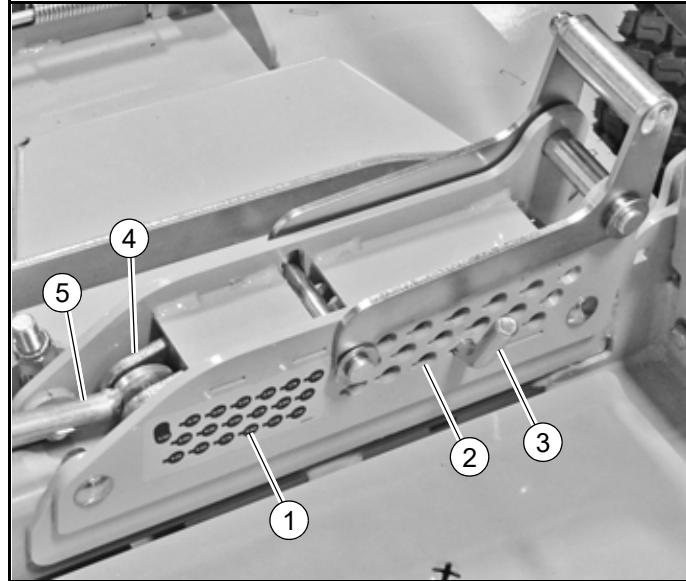
1. The operator must be on the seat.
2. Turn the ignition switch to the "ON" position. Do not start the engine.
3. Push down on the front side of the deck lift switch — the deck should raise. The deck should stop when the switch is released.
4. Release the deck from the transport position.
5. Push down on the rear side of the deck lift switch — the deck should lower. The deck should stop when the switch is released.
6. If the deck lift does not operate correctly, contact your Dealer for assistance.



## Operation

**IMPORTANT:** The actuator is designed to raise and lower the deck to adjust the deck height stop pin. Do not use the actuator to hold the mower deck in position while mowing.

1. Use the deck lift switch to raise the deck to release pressure from the deck height stop pin. Fig. 11
2. Remove the pin from the current cut height setting and insert the pin in the desired cut height setting. Fig. 11
3. Use the deck lift switch to lower the deck until the deck lift slider is against the deck height stop pin. Release the deck lift switch. Fig. 11



INDEX NO.	DESCRIPTION
1	Cut Height Indicator
2	Cut Height Settings
3	Deck Height Stop Pin
4	Deck Lift Slider
5	Deck Height Link

FIG. 11