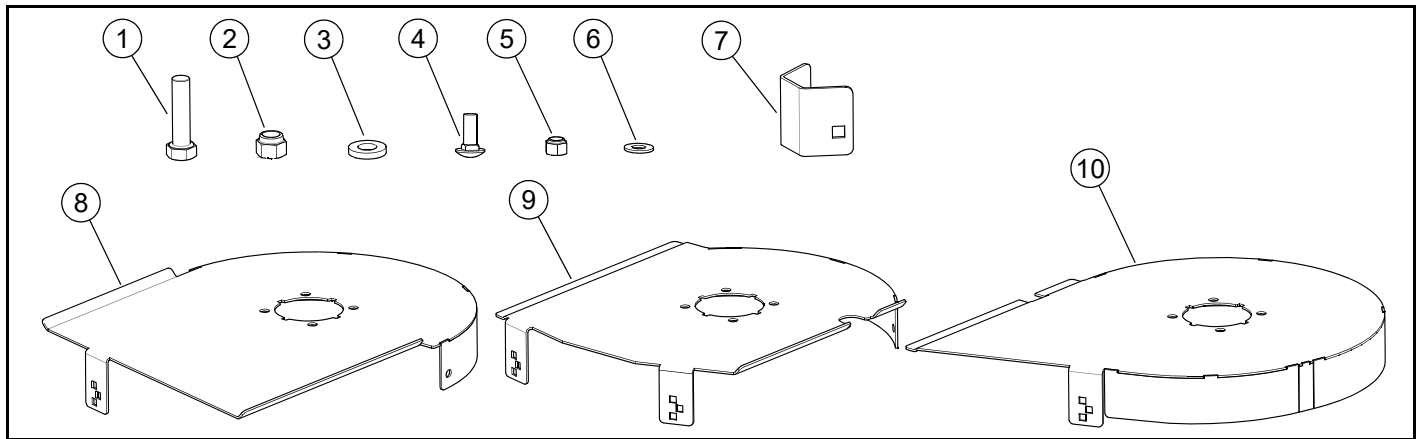


Sand Kit
54" Deck—Part Number 124136
60" Deck—Part Number 124137
66" Deck—Part Number 124138
72" Deck—Part Number 124139

Instruction Number 124135

Packing List

Listed below are parts included in this kit. If any parts are missing or damaged, please contact the Excel Parts Department. Retain these instructions for replacement parts.



P/N 124136—54" DECK

INDEX NO.	PART NO.	DESCRIPTION	QTY.
1	078949	CS .500-13 X 2.00 HX G5 ZNY	12
2	781567	NT .500-13 NL	12
3	767962	FW .531 X 1.063 X .175	12
4	025395	CB .375-16 X 1.00 G5 ZNY	6
5	086660	NT .375-16 G5 NL	6
6	767954	FW .379 X .813 X .063	6
7	124161-3	CAP	2
8	124170-3	54" RIGHT CHAMBER W/A	1
9	124167-3	54" CENTER CHAMBER W/A	1
10	124162-3	54" LEFT CHAMBER W/A	1

P/N 124138—66" DECK

INDEX NO.	PART NO.	DESCRIPTION	QTY.
1	078949	CS .500-13 X 2.00 HX G5 ZNY	12
2	781567	NT .500-13 NL	12
3	767962	FW .531 X 1.063 X .175	12
4	025395	CB .375-16 X 1.00 G5 ZNY	6
5	086660	NT .375-16 G5 NL	6
6	767954	FW .379 X .813 X .063	6
7	124161-3	CAP	2
8	124181-3	66" RIGHT CHAMBER W/A	1
9	124178-3	66" CENTER CHAMBER W/A	1
10	124173-3	66" LEFT CHAMBER W/A	1

P/N 124137—60" DECK

INDEX NO.	PART NO.	DESCRIPTION	QTY.
1	078949	CS .500-13 X 2.00 HX G5 ZNY	12
2	781567	NT .500-13 NL	12
3	767962	FW .531 X 1.063 X .175	12
4	025395	CB .375-16 X 1.00 G5 ZNY	6
5	086660	NT .375-16 G5 NL	6
6	767954	FW .379 X .813 X .063	6
7	124161-3	CAP	2
8	124158-3	60" RIGHT CHAMBER W/A	1
9	124155-3	60" CENTER CHAMBER W/A	1
10	124150-3	60" LEFT CHAMBER W/A	1

P/N 124139—72" DECK

INDEX NO.	PART NO.	DESCRIPTION	QTY.
1	078949	CS .500-13 X 2.00 HX G5 ZNY	12
2	781567	NT .500-13 NL	12
3	767962	FW .531 X 1.063 X .175	12
4	025395	CB .375-16 X 1.00 G5 ZNY	6
5	086660	NT .375-16 G5 NL	6
6	767954	FW .379 X .813 X .063	6
7	124161-3	CAP	2
8	124192-3	72" RIGHT CHAMBER W/A	1
9	124189-3	72" CENTER CHAMBER W/A	1
10	124184-3	72" LEFT CHAMBER W/A	1

Assembly

1. Park the mower on a solid, level surface; set the park brakes; shut-off the engine; and remove the ignition key. Disconnect the negative battery cable.
2. Chock the wheels to prevent the mower from moving.
3. Remove the right- and left-side pulley covers. Retain the covers and the hardware for re-installation.
4. Remove the floor pan for access to the center pulley and spindle. Retain the floor pan and the hardware for re-installation.
5. Note the number of links in the spring tension chain at the anchor point, then release the tension springs to reduce tension on the belts. Move the belts out of the way to work on each pulley.
6. Working with one pulley at a time, remove and retain the spindle top cap screw, pulley, any spacers and the hardware to gain access to the spindle. Fig. 1
7. Remove only two of the existing spindle cap screws at a time (to keep the spindle in place) and replace them with the provided cap screws. Reuse the existing flat washers. Fig. 1 & Fig. 2
8. Remove and replace the other two cap screws with the provided cap screws. Reuse the existing flat washers.
9. Torque the four spindle cap screws to 118 ft-lbs. (160 N•m).
10. Replace the spindle top cap screw, pulley, any spacers and the hardware removed in step 6. Fig. 1
11. Torque the spindle top cap screw to 118 ft-lbs. (160 N•m).
12. Repeat steps 7 through 11 for the other two pulleys. Fig. 1 & Fig. 2
13. Route the belts as shown in Fig. 3.
14. Adjust the belt tension by attaching the spring chain link where it was before at the anchor point.
IMPORTANT: Do not over tension the spring to compensate for a badly worn belt or pulley.
NOTE: Make sure the spring length is correct (between 9.3" and 10.3" for a new belt) as measured from the outside of one hook to the outside of the opposite hook. Fig. 3
15. Replace the right- and left-side pulley covers using the existing hardware.



WARNING



Never operate the mower without the deck covers in place.

Use only appropriate vehicle stands, with a minimum weight rating of 2000 pounds to block the unit up. Use in pairs only. Follow the instructions supplied with the vehicle stands.

Mower blades are sharp and can cut. Wrap the blade(s) or wear gloves and use extra caution when servicing them.

16. Replace the floor pan using the existing hardware.
17. Place mower securely on jack stands and do not allow machine to move. Chock front wheels and remove drive wheels.
18. Remove and retain the adjustable front baffles, the existing blades, and the hardware.
19. Install the left chamber W/A (Fig. 4), the center chamber W/A (Fig. 5), and the right chamber W/A (Fig. 6) using the bolts on the spindles and the provided hardware.
20. With the chamber W/As in place, mark the six places on the rear wrapper where the holes need to be drilled. Fig. 7
21. Remove the three chamber W/As, then use a 13/32" bit to drill the six holes.
22. Reinstall the three chamber W/As on the spindles.
23. Use the provided hardware to install the two sand kit caps and to bolt the plates to the deck. Fig. 7 & Fig. 8
24. Reinstall the adjustable baffles between the deck and the chamber W/A flanges, in the second highest slot or lower, using the retained hardware. Fig. 9
NOTE: Make sure the hardware is in the correct slots in the front wall of the deck and in the flange slots of the chamber W/As.

25. Use the retained hardware to reinstall the blades. Torque bolts to 118 ft–lbs. (160 N•m).



WARNING



Failure to correctly torque the bolt may result in the loss of the blade which can cause serious injury.

26. Lower the mower.

27. Remove the wheel chocks.

28. Reconnect the negative battery cable and continue operation.

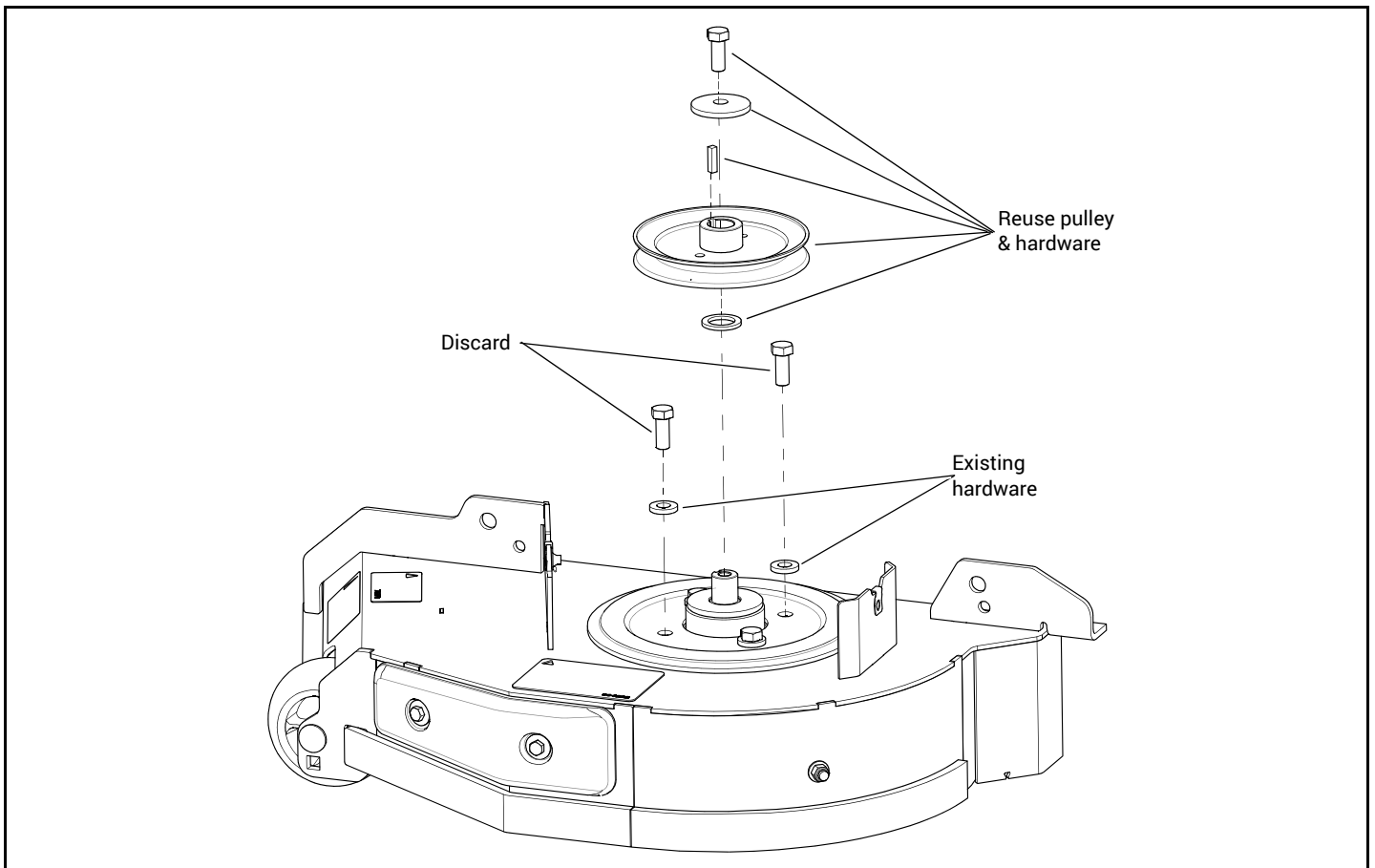
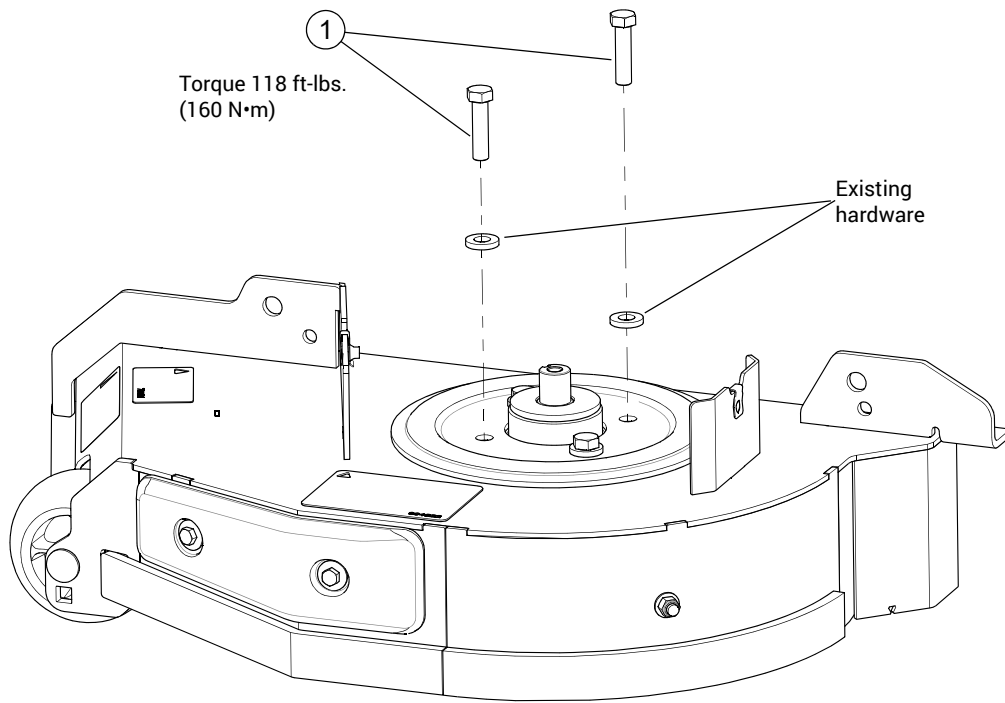


FIG. 1



INDEX NO.	DESCRIPTION
1	CS .500-13 X 2.00 HX G5 ZNY

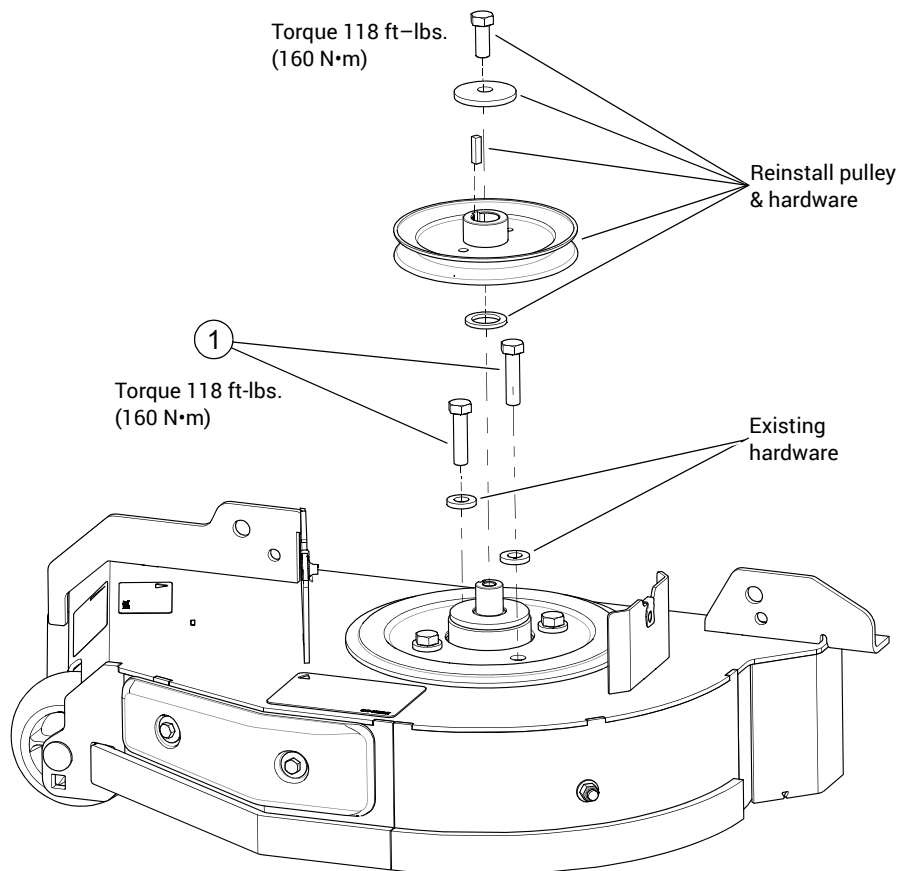


FIG. 2

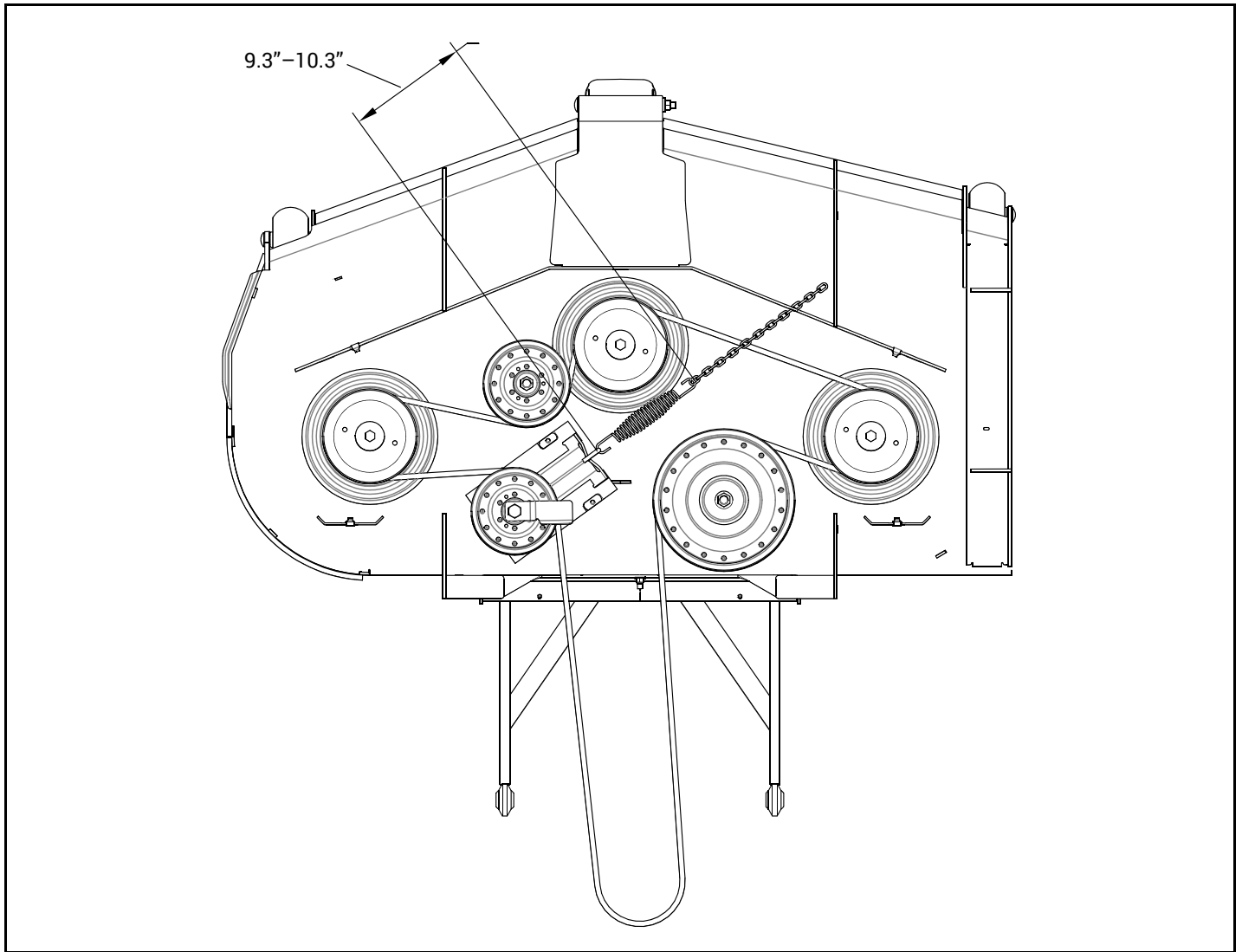
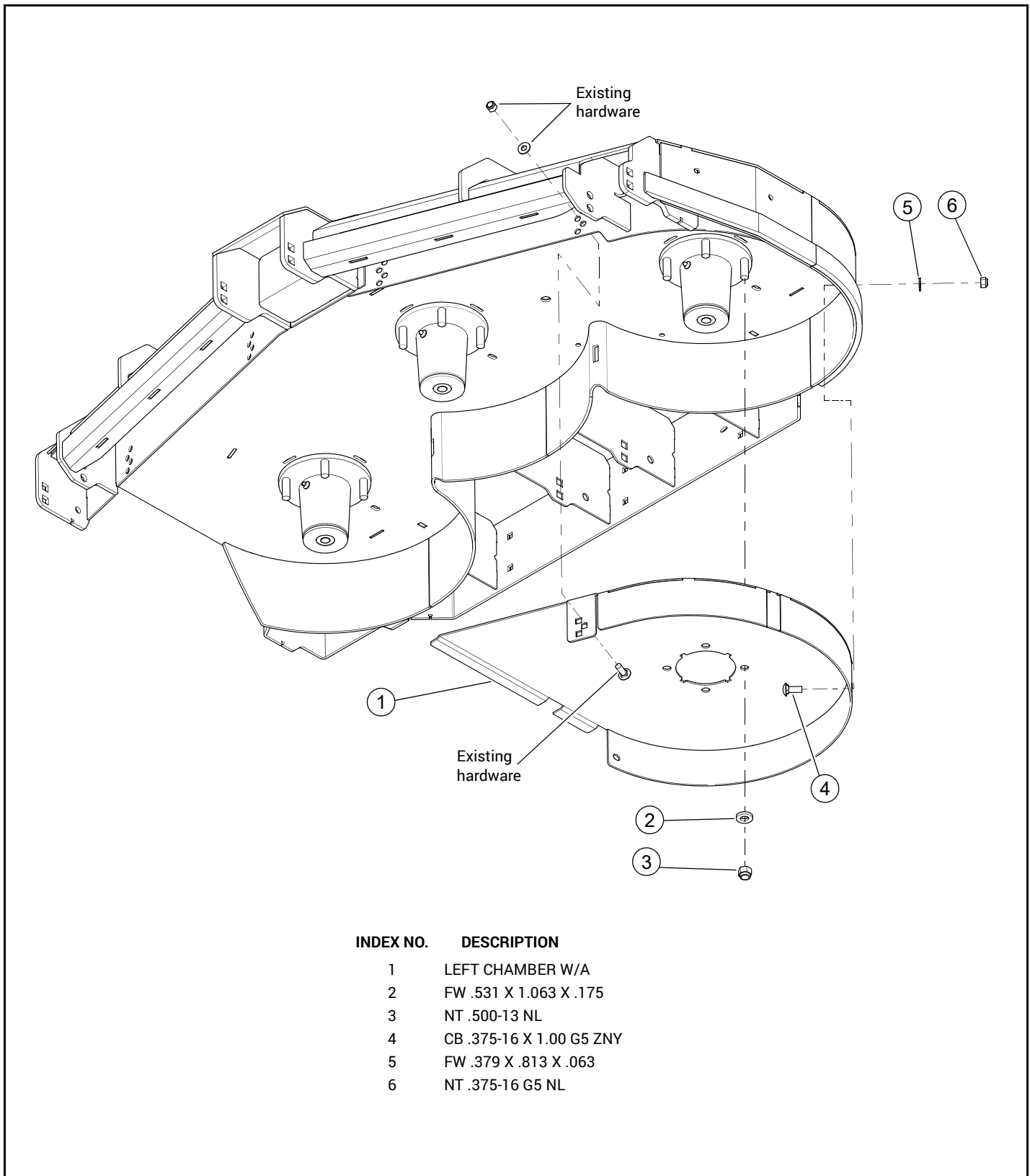
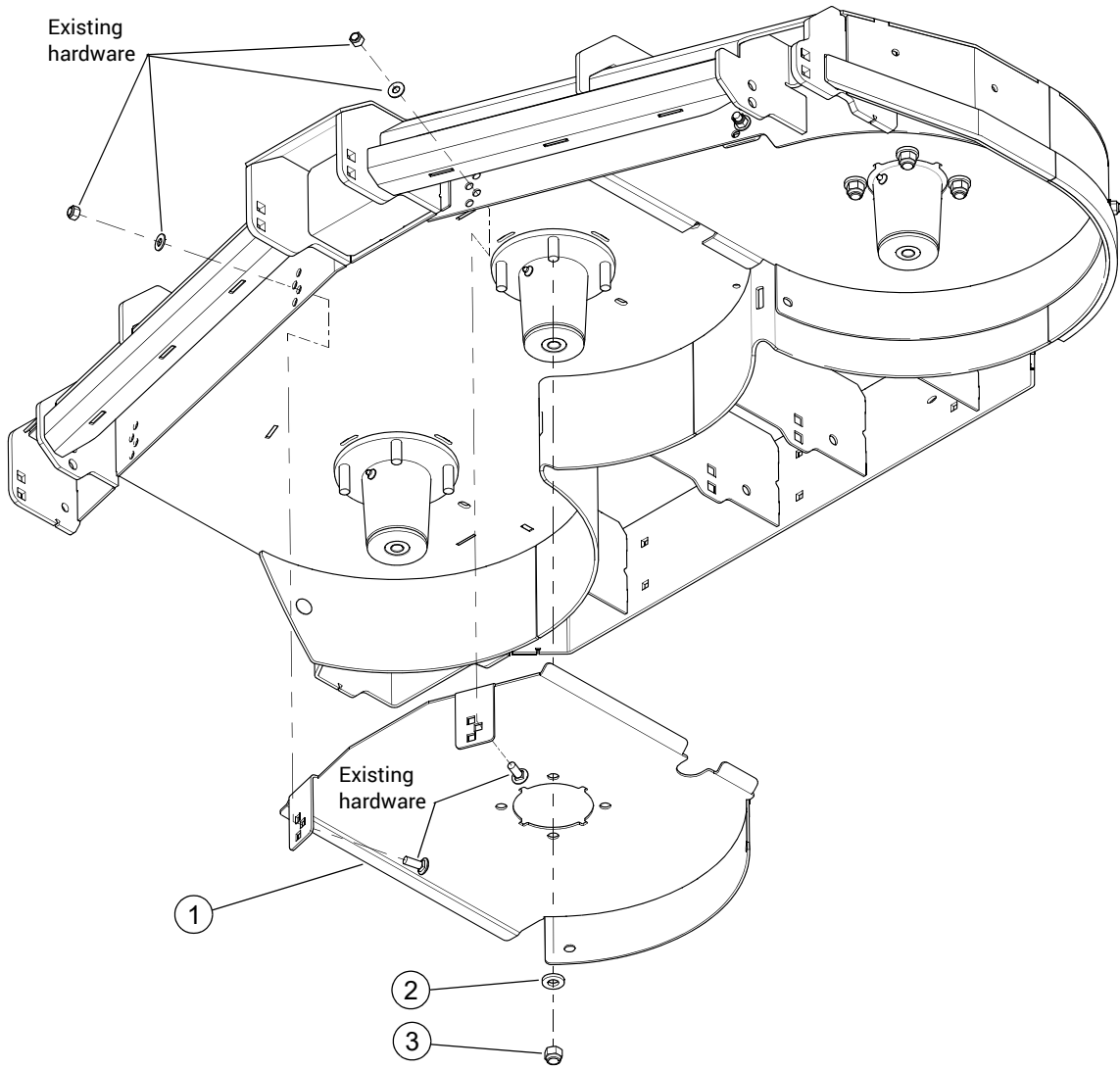


FIG. 3



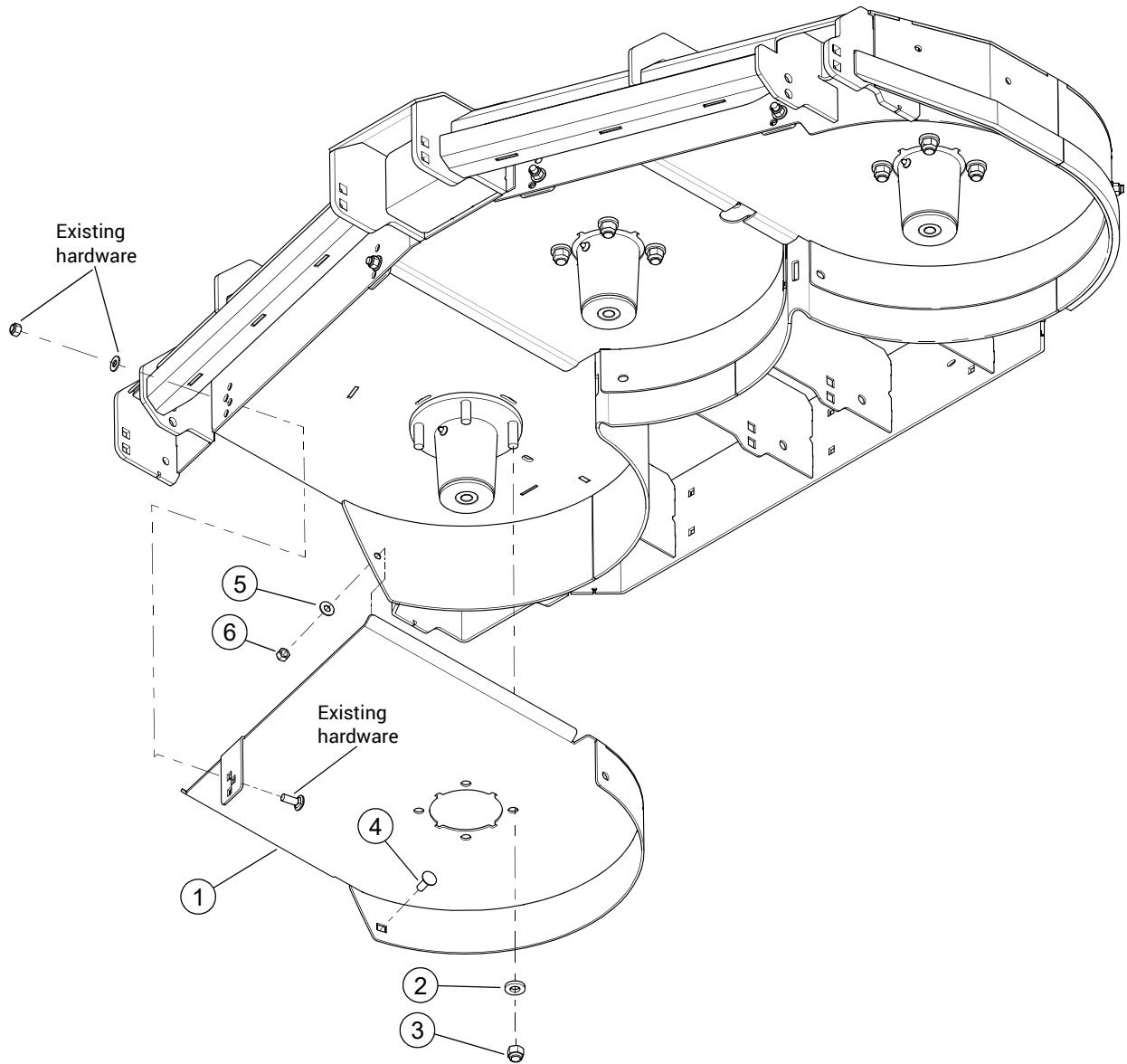
INDEX NO.	DESCRIPTION
1	LEFT CHAMBER W/A
2	FW .531 X 1.063 X .175
3	NT .500-13 NL
4	CB .375-16 X 1.00 G5 ZNY
5	FW .379 X .813 X .063
6	NT .375-16 G5 NL

FIG. 4



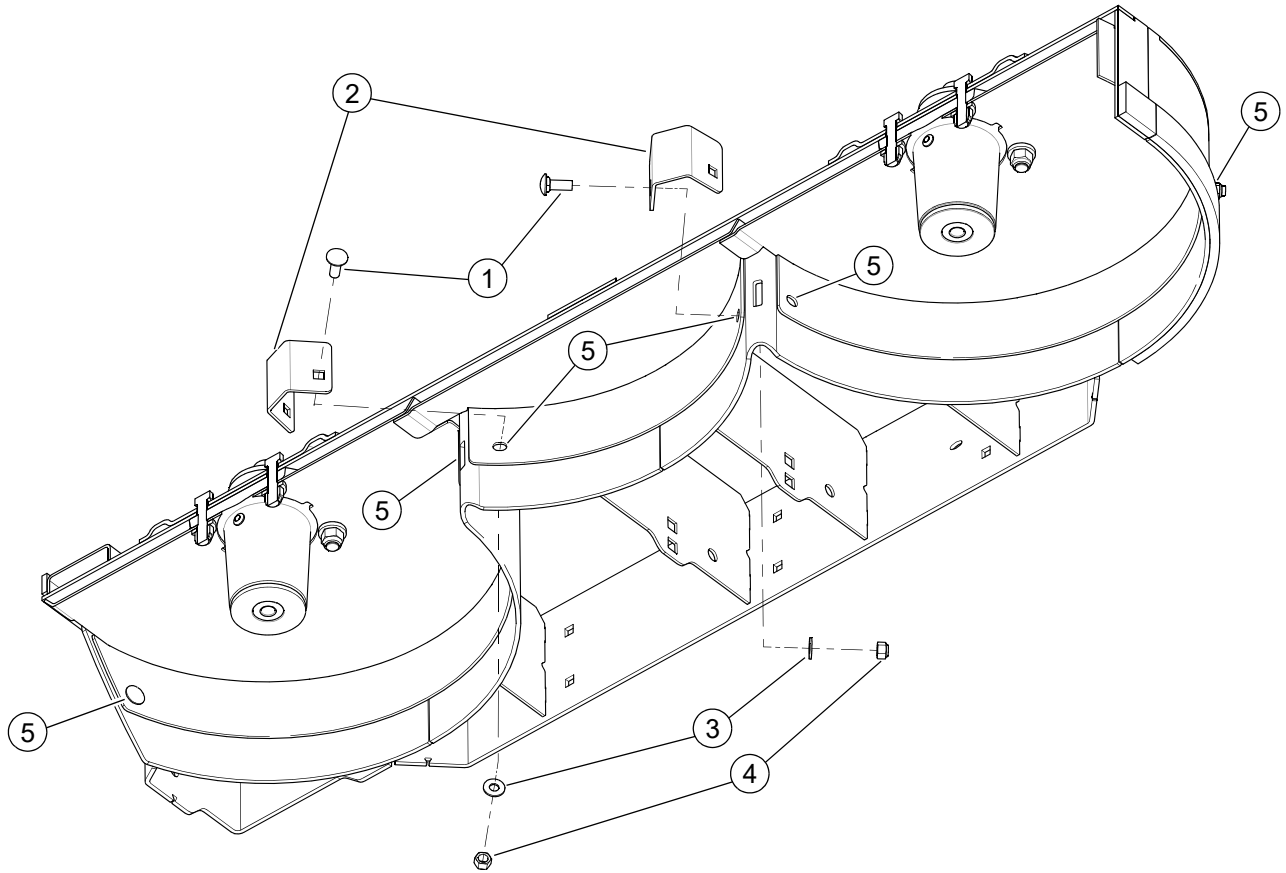
INDEX NO.	DESCRIPTION
1	CENTER CHAMBER W/A
2	FW .531 X 1.063 X .175
3	NT .500-13 NL

FIG. 5



INDEX NO.	DESCRIPTION
1	RIGHT CHAMBER W/A
2	FW .531 X 1.063 X .175
3	NT .500-13 NL
4	CB .375-16 X 1.00 G5 ZNY
5	FW .379 X .813 X .063
6	NT .375-16 G5 NL

FIG. 6



INDEX NO.	DESCRIPTION
1	CB .375-16 X 1.00 G5 ZNY
2	CAP
3	FW .379 X .813 X .063
4	NT .375-16 G5 NL
5	Drill 13/32" hole

FIG. 7

Sand kit assembled

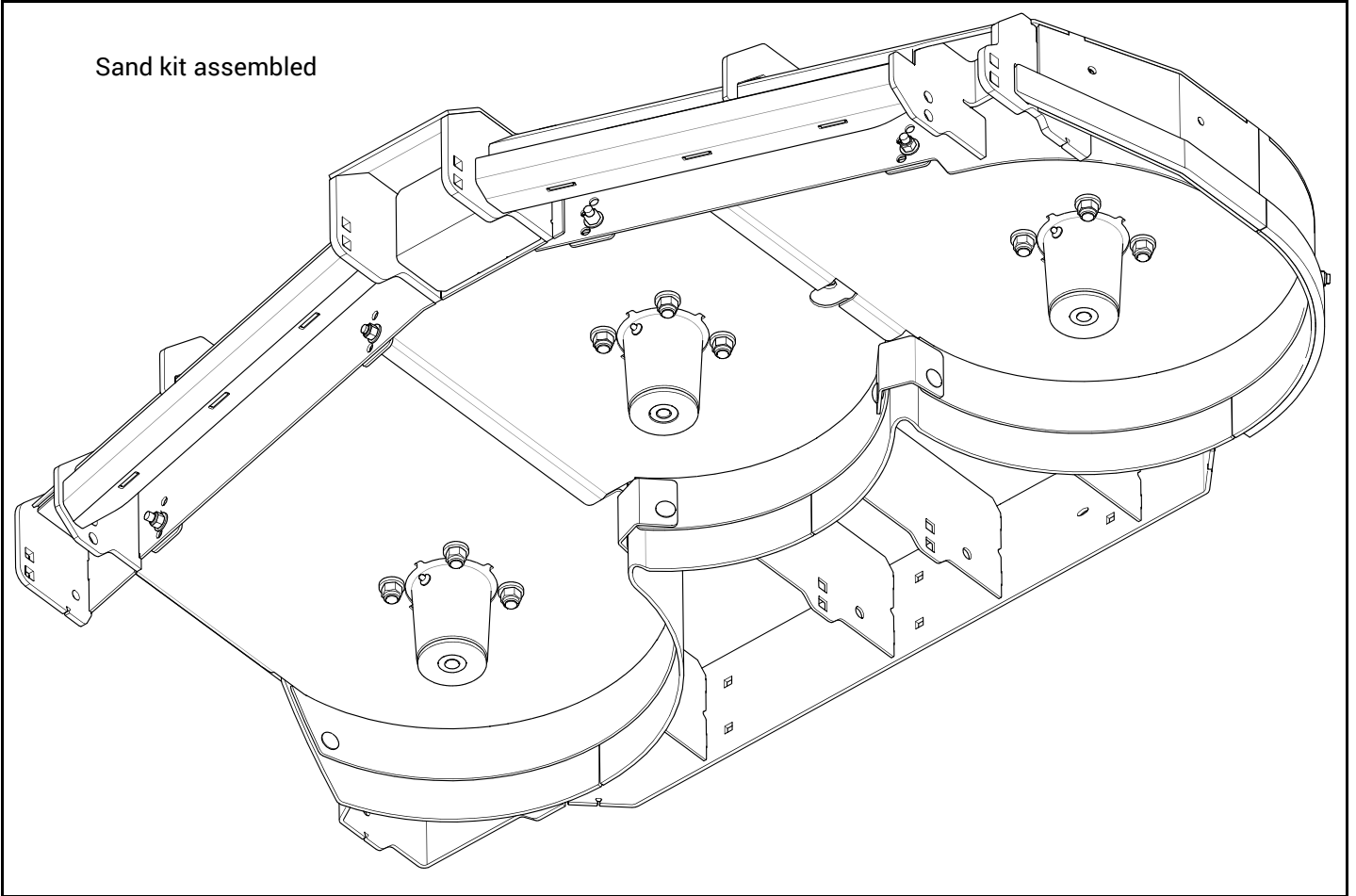


FIG. 8

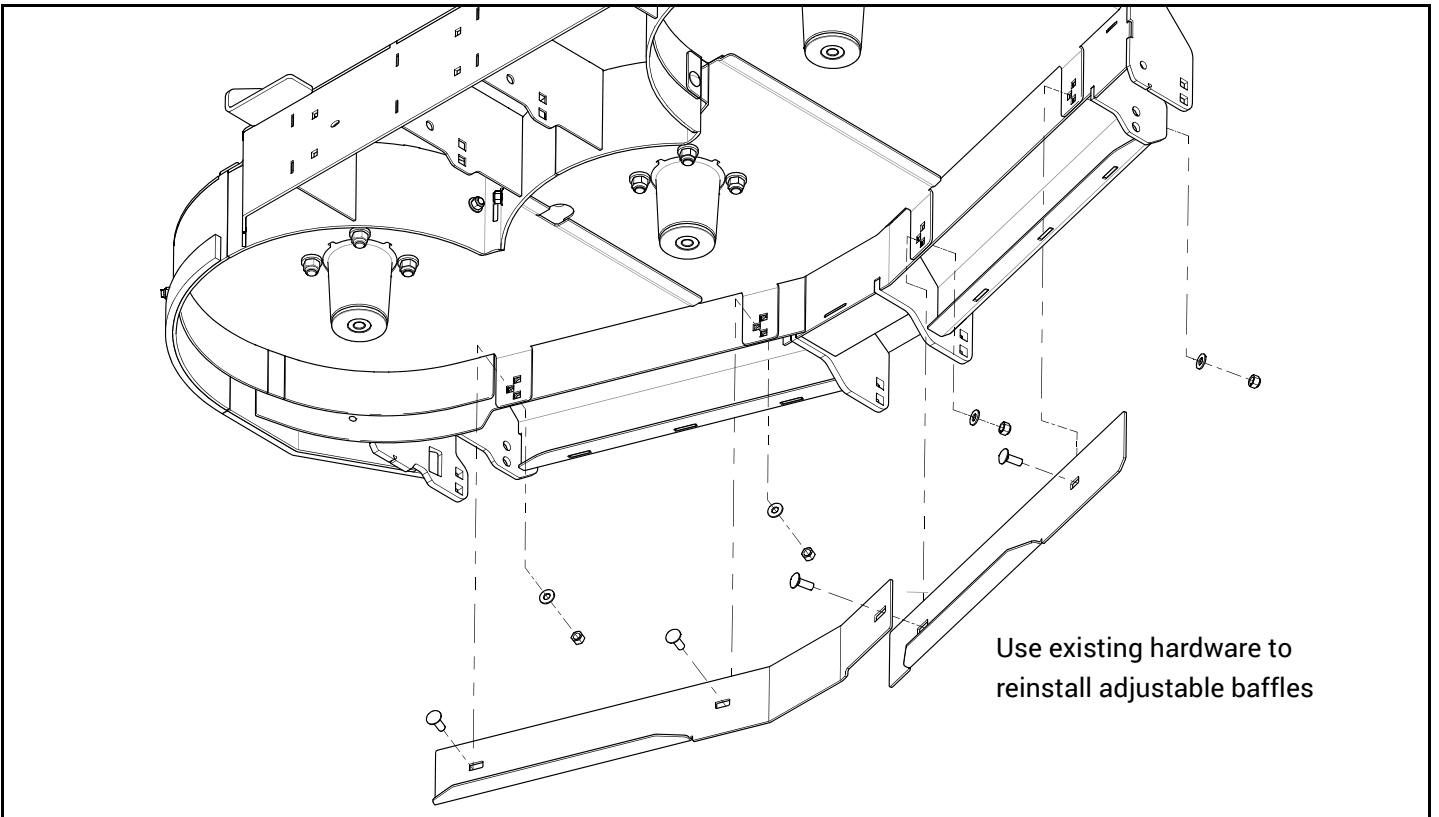


FIG. 9