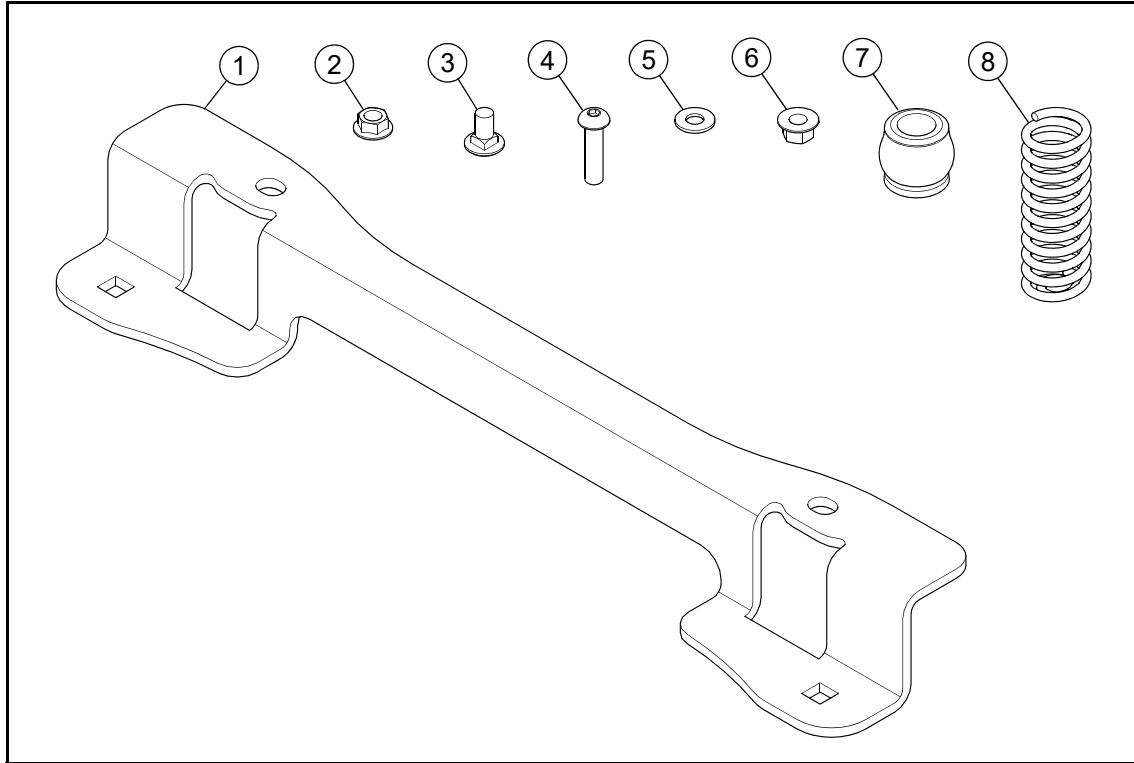


Packing List

Listed below are parts included in this kit. If any parts are missing or damaged, please contact Excel Parts Department. Retain these instructions for replacement parts.



INDEX NO.	PART NO.	DESCRIPTION	QTY
1	123911-3	SPRING MOUNT BRACKET	1
2	016899	NT .375-16 HX G5 FLK	2
3	011320	CB .375-16 X .75 STD ZN	2
4	604816	CS .375-16 X 1.50 BH ZN	2
5	767954	FW 0.379 X .82 X .06 HD ZN	2
6	604515	NT .375-16 FL NY GF	2
7	608128	BUMPER	2
8	793851	COMPRESSION SPRING 1.25 X 4.00 X .188	2

WARNING

To avoid personal injury or property damage, use extreme care when handling gasoline. Gasoline is extremely flammable and the vapors are explosive.

- Do not remove fuel cap or fill tank with engine running or while engine is hot.
- A fire or explosion from gasoline can burn you and others and can damage property.
- Observe the usual gasoline handling precautions:
- Do not smoke while refueling. Extinguish all cigarettes, cigars, pipes and other sources of ignition.
- Keep gasoline away from open flame or spark and store machine away from open flame or spark or pilot light such as on a water heater or appliances.
- Avoid prolonged breathing of vapors. Long-term exposure to vapors can cause serious injury and illness.
- Keep gasoline away from eyes and skin. If gasoline is spilled on clothing, change clothing immediately.

Assembly

1. Park the mower on a solid, level surface; set the park brakes; shut-off the engine; and remove the ignition key. Disconnect the negative battery cable.
2. Allow the engine to cool before installing the seat spring kit.
3. Rotate the seat forward.
4. Turn the fuel shut-off valve to the "OFF" position. Disconnect the fuel line and the fuel vapor line from the fuel tank.
FIG. 1

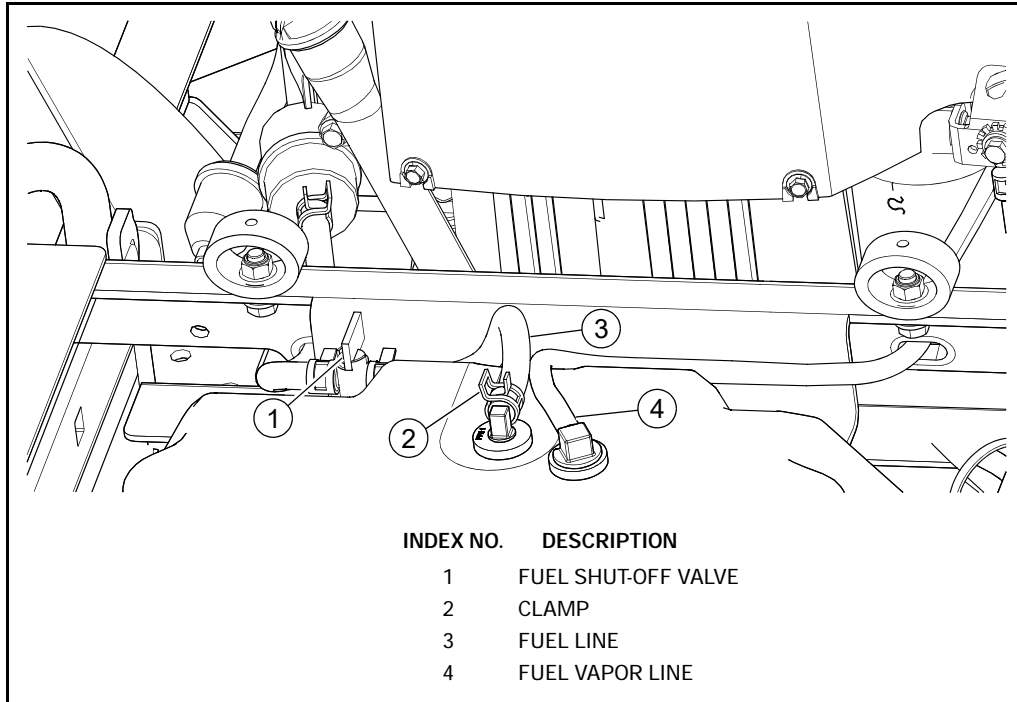


FIG. 1

5. Remove the existing seat bumpers and existing hardware. Discard these parts. FIG. 2

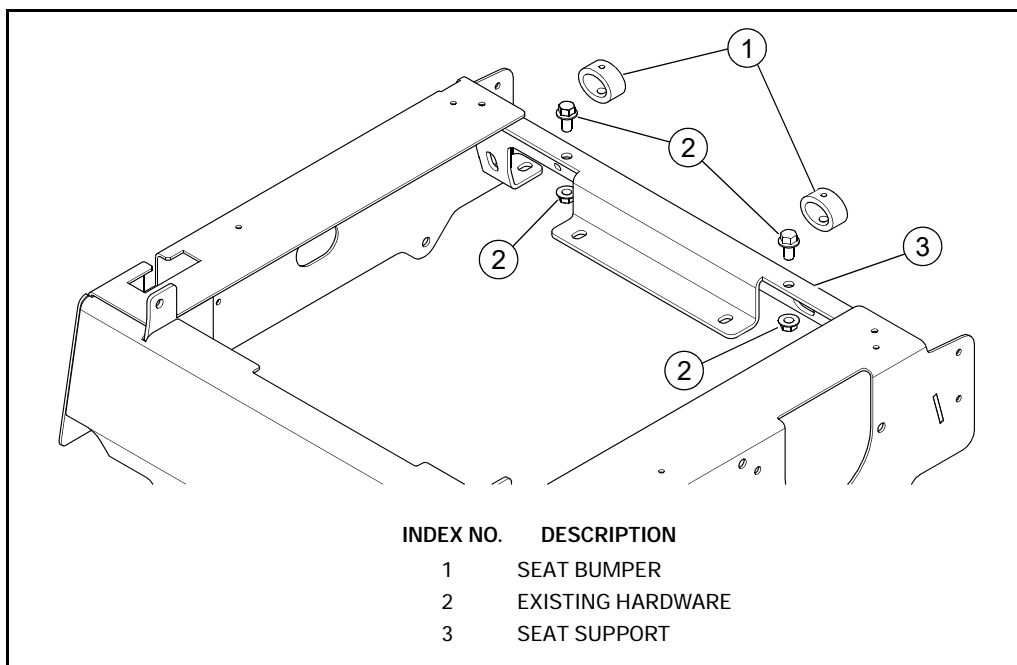


FIG. 2

6. Attach the compression springs with the hardware supplied to the spring mount bracket. Torque the nuts to 30 ft-lbs (40 N•m). FIG. 3

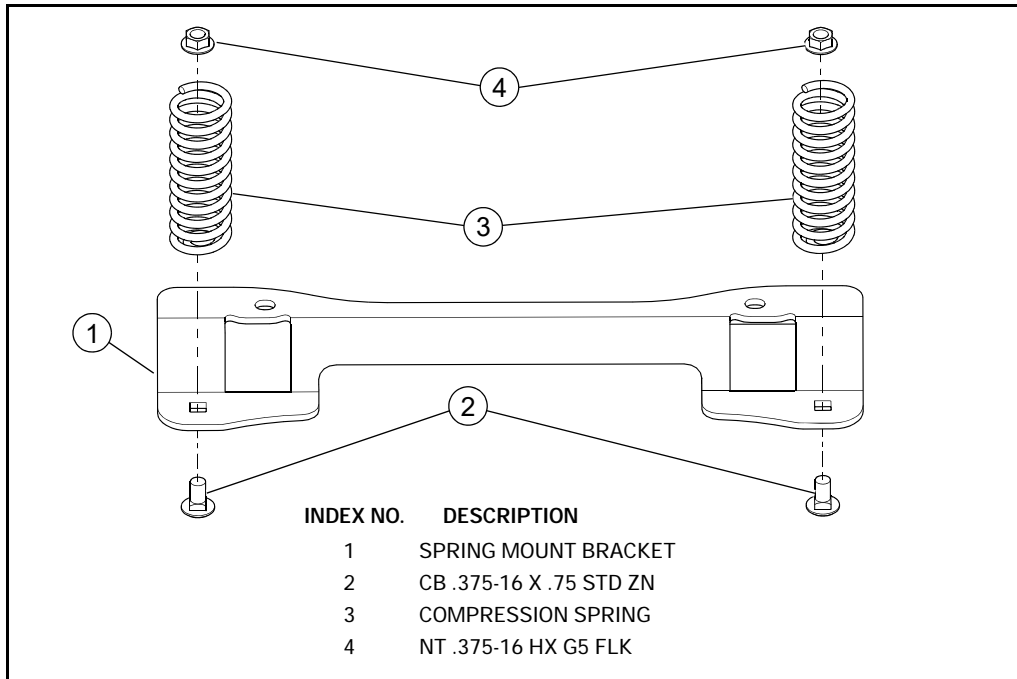


FIG. 3

7. Attach the spring mount bracket and bumpers to the seat support using the hardware supplied with the kit. Torque the nuts to 30 ft-lbs (40 N•m). FIG. 4

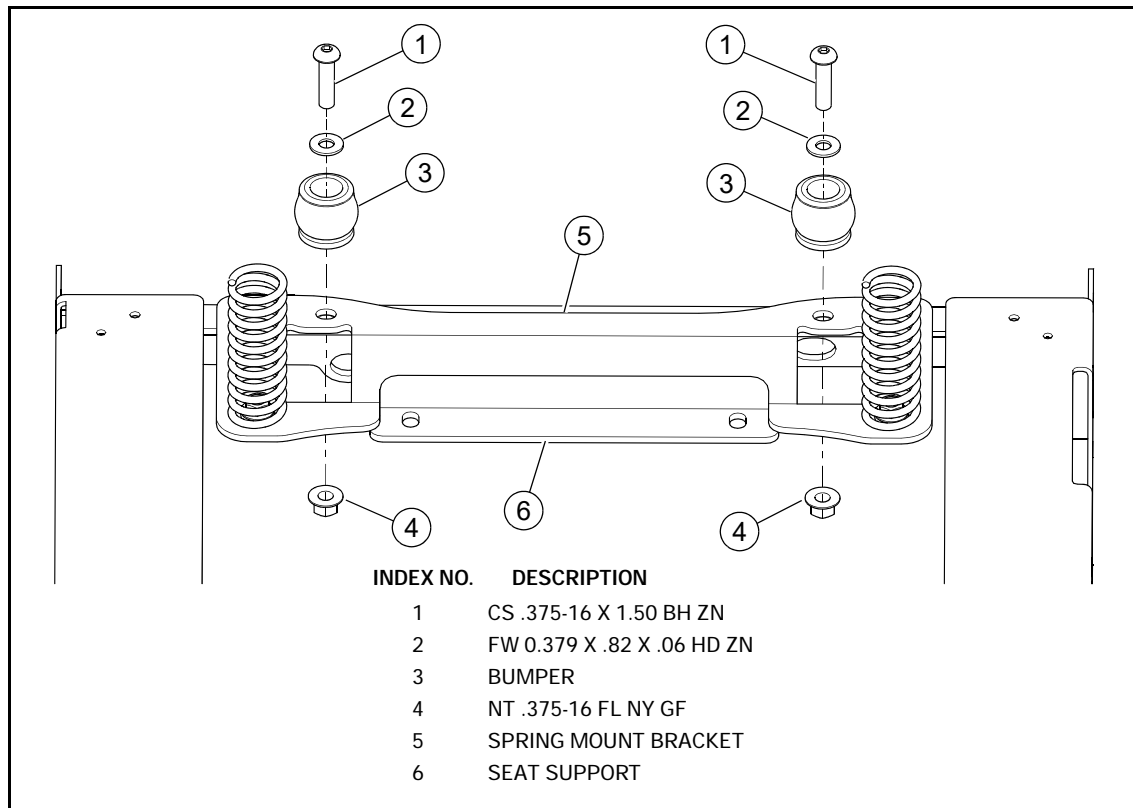


FIG. 4

8. Route the fuel line and fuel vapor line through the spring mount bracket. Connect the lines to the fuel tank. Make sure the fuel line clamp is secure and the fuel vapor line is properly installed. Turn the fuel shut-off valve to the "ON" position. FIG. 5

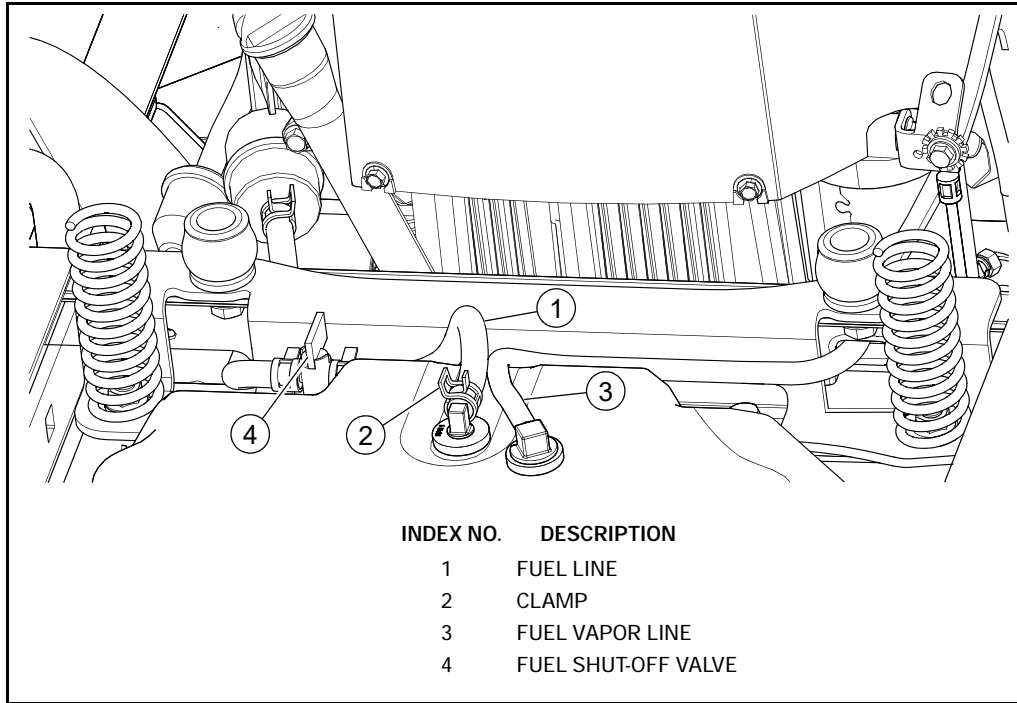


FIG. 5



WARNING



Clean up any gasoline spills. If gasoline is spilled, do not attempt to start the engine but move the machine away from the area of spillage and avoid creating any source of ignition until gasoline vapors have dissipated.

9. Rotate the seat to the operating position.
10. Connect the negative battery cable. The machine is now ready to operate.