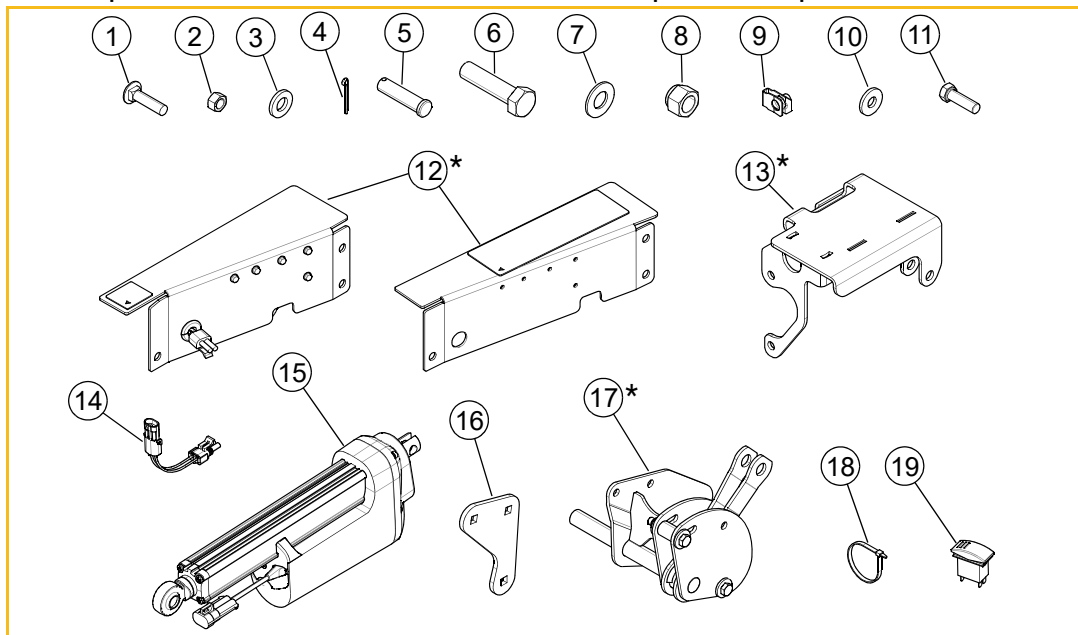


DIESEL Z DECK LIFT KIT

PART NUMBER: 123739

PACKING LIST:

Listed below are parts included in this kit. If any parts are missing or damaged, please contact the Hustler® Parts Department. Retain these instructions for replacement parts.



INDEX NO.	PART NO.	DESCRIPTION	QTY.	INDEX NO.	PART NO.	DESCRIPTION	QTY.
1	710194	CB .375-16 X 1.50 STD G5	3	11	052860	CS .375-16 X 1.25 HX G5	2
2	054502	NT .375-16 HX G5	5	12	554103	SIDE PANEL ASSY	1
3	606256	FW .515 X 1.00 X .134	2	13	554066	ACTUATOR MOUNT ASSY	1
4	017244	CP .125D X 1.00 LG HML Z	1	14	606666	WIRE HARNESS	1
5	020016	CE .500X2.00 .150X1.82	1	15	606595	ACTUATOR	1
6	025015	CS .625-11 X 2.50 HX G5	1	16	102137	BACK PLATE	1
7	728030	FW .656 X 1.312 X .090 ZNY	2	17	554079	DECK LIFT MOUNT ASSY	1
8	604232	NT .625-18 NLKG5	1	18	000331	WIRE TIE	6
9	601069	CN .312-18 X .20 MAX THK	3	19	797308	ROCKER SWITCH	1
10	712919	FW .406 X 1.00 X .12 HRD Z	7				

* REFER TO THE PARTS BREAKDOWN PAGES FOR REPLACEMENT PARTS FOR THESE ASSEMBLIES

ASSEMBLY:

1. Park the mower on a solid, level surface; set the park brakes; and shut-off the engine.
2. Place four 3" (76.2mm) high deck support blocks (two stacked 2" x 4" blocks can be used to create a 3" [76.2mm] high support) at the four points of the deck as shown. FIG. 1
3. Lower the deck onto the blocks.

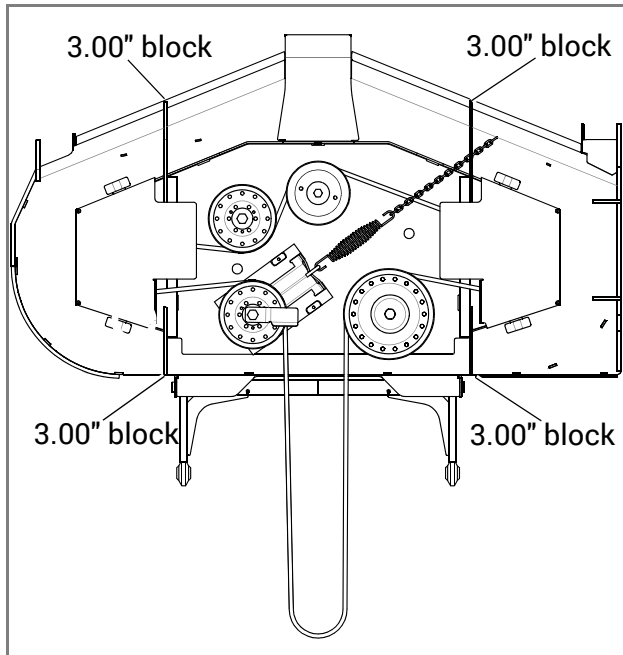
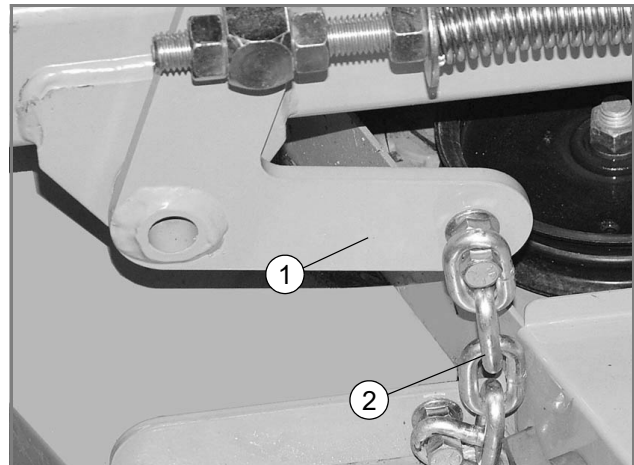


FIG. 1



INDEX NO.	DESCRIPTION
1	DECK LIFT ARM
2	LIFT CHAIN

FIG. 2

4. Remove the ignition key and disconnect the negative battery cable.
5. Unbolt the left front lift chain from the deck lift arm. FIG. 2

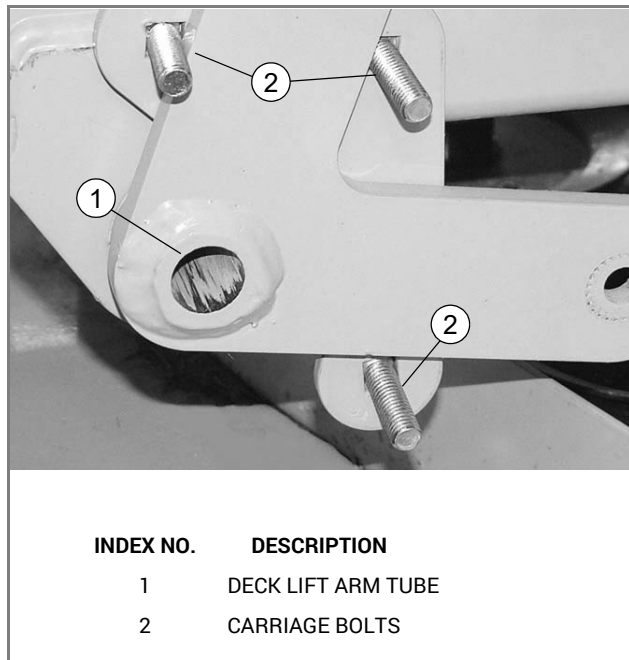


FIG. 3

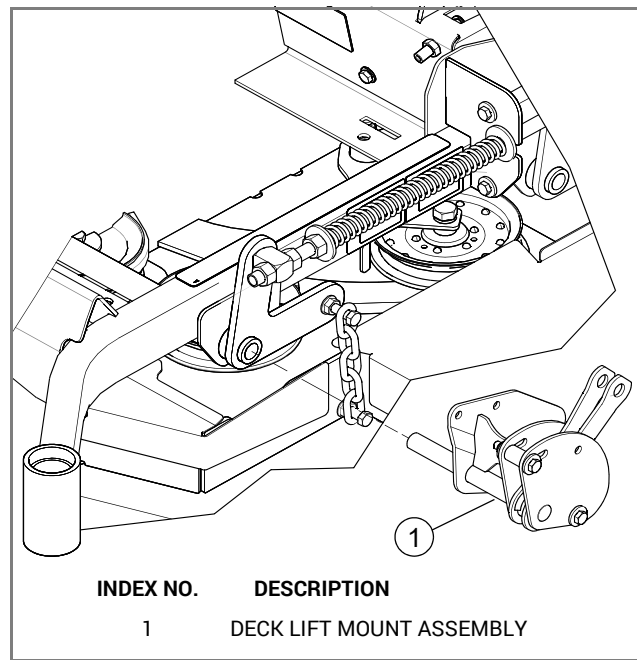


FIG. 4

6. File off any burrs or excess paint inside the deck lift arm tube. FIG. 3
7. Grease the lift pivot shaft and then insert it into the pivot tube of the deck lift pedal. FIG. 4

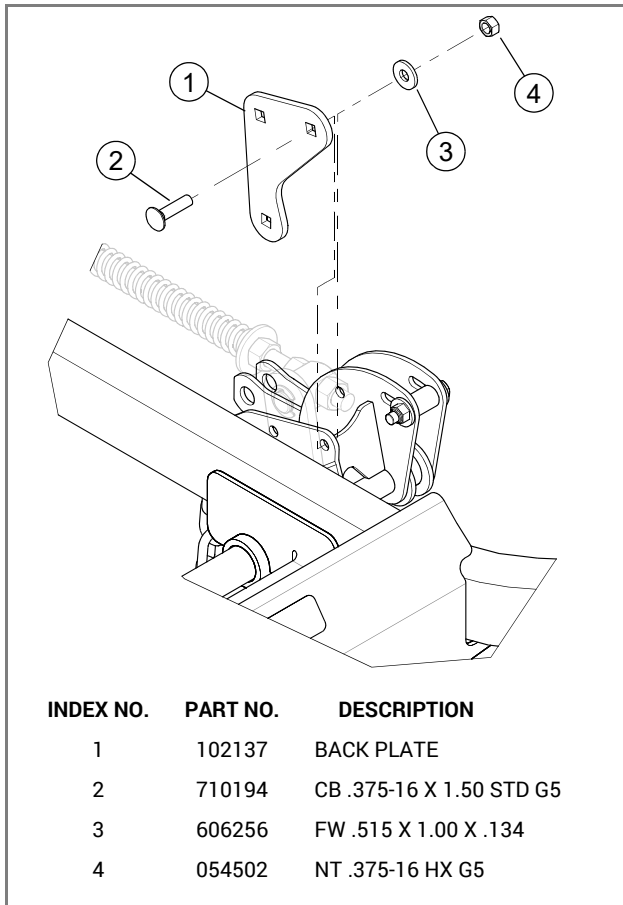


FIG. 5

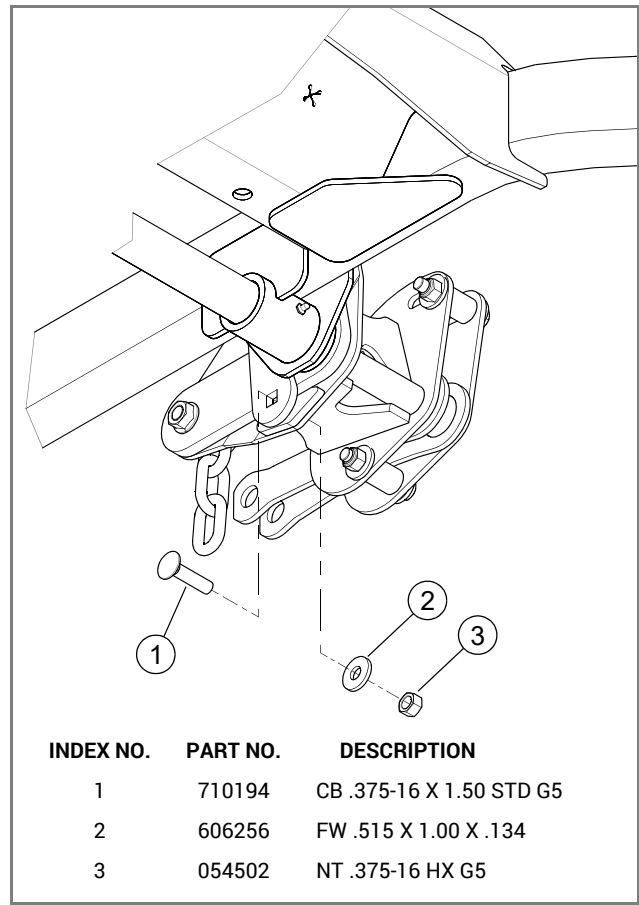


FIG. 6

8. Clamp the deck lift mount assembly in place.
9. Attach the back plate to the lift mount assembly using the provided hardware. Insert two carriage bolts into the back plate and slide over the left front deck lift arm, but do not tighten. FIG. 3 & FIG. 5
10. After the back plate is in place, insert the third carriage bolt into the lower hole. FIG. 6
11. Re-attach the left front lift chain to the lift pivot assembly.

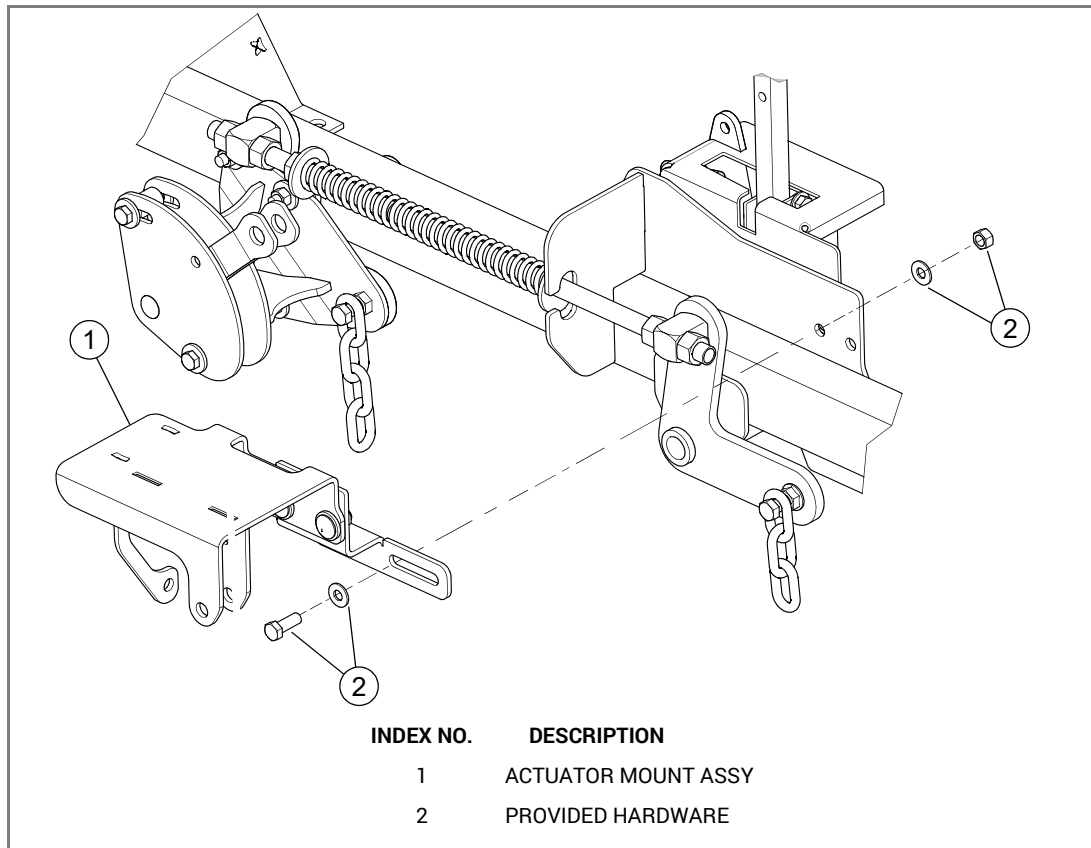


FIG. 7

12. Loosely attach the actuator mount assembly using the provided hardware. FIG. 7

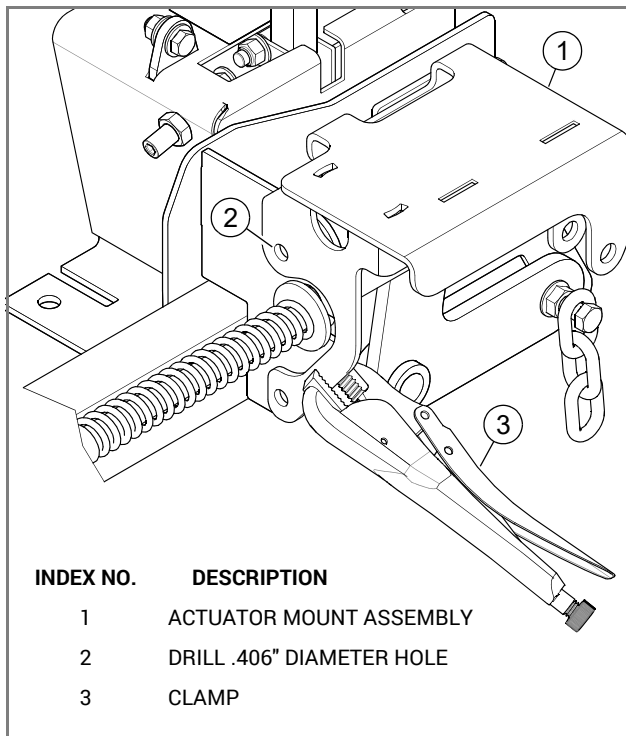


FIG. 8

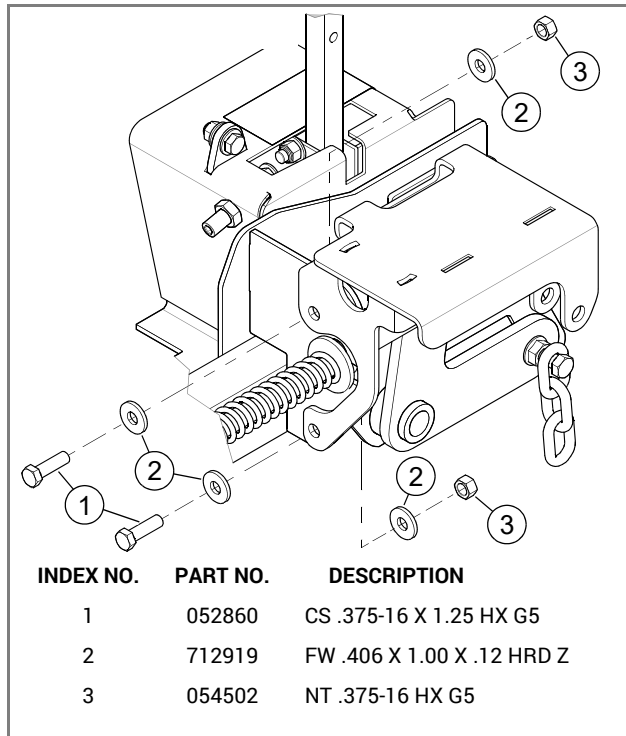


FIG. 9

13. Clamp the actuator mount assembly in position. FIG. 8
14. Using the actuator mount assembly as a drill guide, drill two .406" diameter holes through the mounting plate of the mower. FIG. 8
NOTE: If these holes already exist, proceed to the next step.
15. Using the two holes in the bracket, attach the actuator mount assembly to the mower using the hardware provided with the actuator mount assembly. FIG. 9
16. Tighten all actuator mount assembly hardware.
17. Step on the deck lift pedal and raise the deck to allow the actuator to be connected to the mounting brackets on the deck lift mount assembly. Attach the actuator to the mounting brackets with the provided hardware. FIG. 10

NOTE: Use Loctite® 242 or equivalent on the bolt threads before attaching the actuator to the mount.

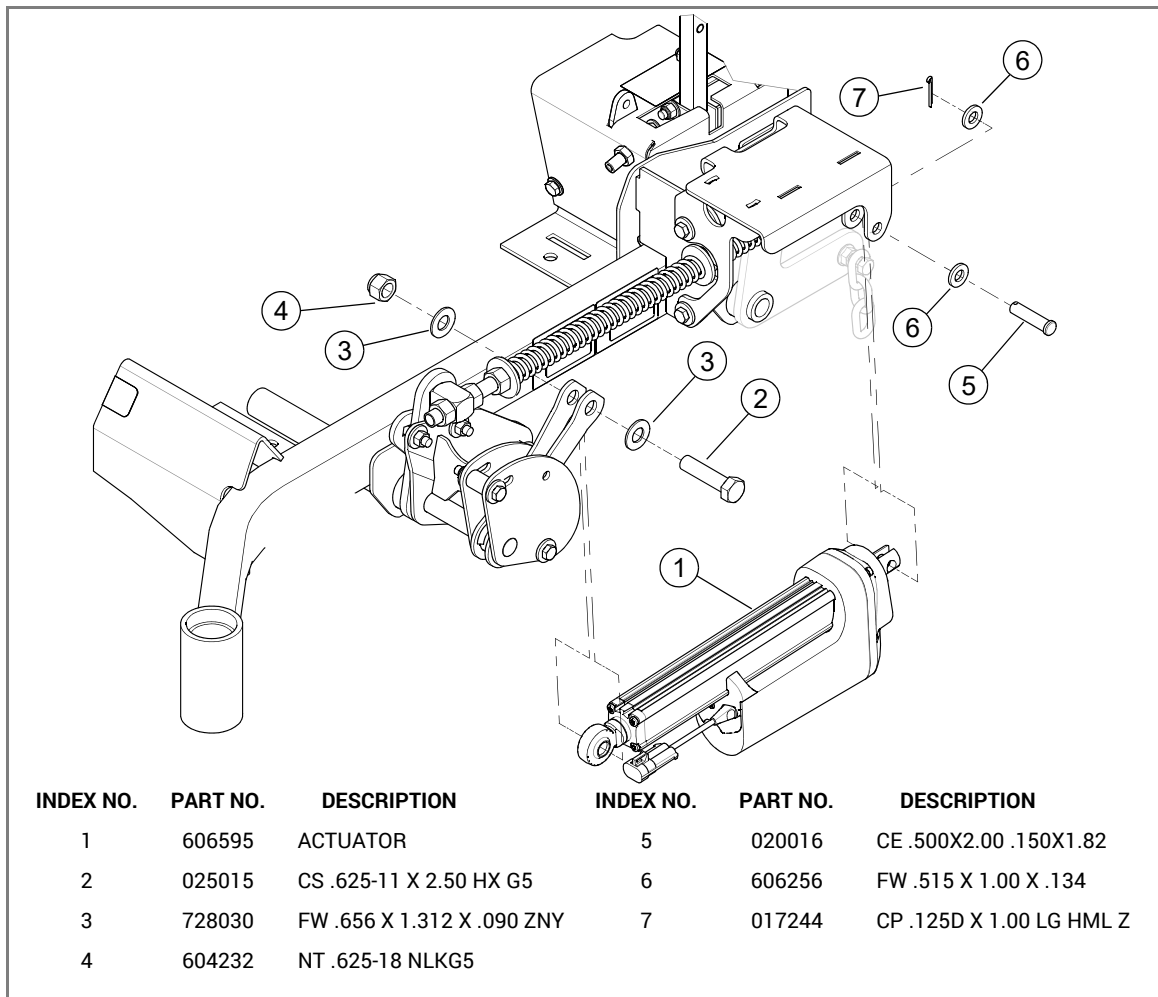


FIG. 10

18. Raise the seat and seat platform to allow access to the area underneath the seat.
19. Remove the existing left side frame cover from the mower.
20. Attach the new left side frame cover to the mower. FIG. 11 & FIG. 12

NOTE: For mowers with serial numbers prior to 10110001, use the frame cover 110155 as shown. For mowers with serial number 10110001 and later, use frame cover 115964. When this is the case, the wire harness must be transferred from frame cover 110155 to frame cover 115964. FIG. 11

NOTE: For mowers with serial number prior to 10110001, use frame cover 110157 and attach it to the tractor using existing two rear bolts.

21. For mowers with serial number 10110001 and later, use frame cover 115962 and attach it to the tractor using existing two rear bolts. FIG. 12

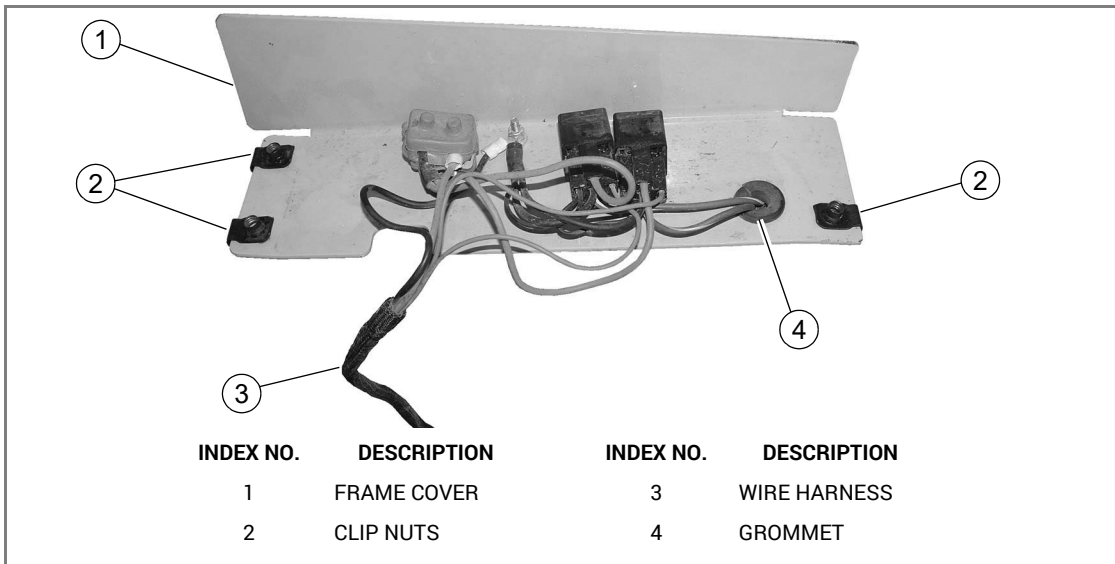


FIG. 11

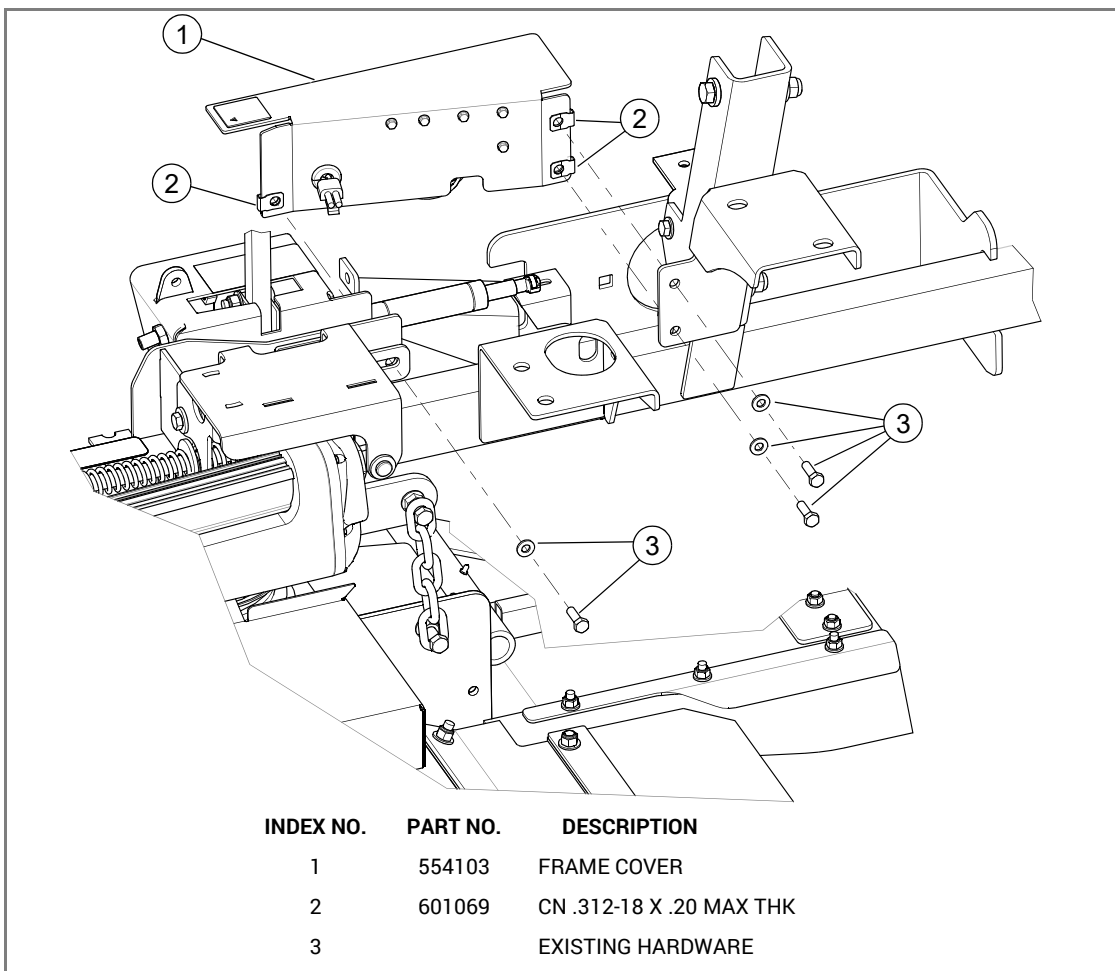


FIG. 12

22. Remove front lower panel (behind the seat).
23. Route the wiring harness behind the seat support, to the instrument panel on the right tank.
24. Pop the grommet out on the right side and route the harness through the grommet.
FIG. 13
25. Use wire ties to secure the harness. FIG. 13

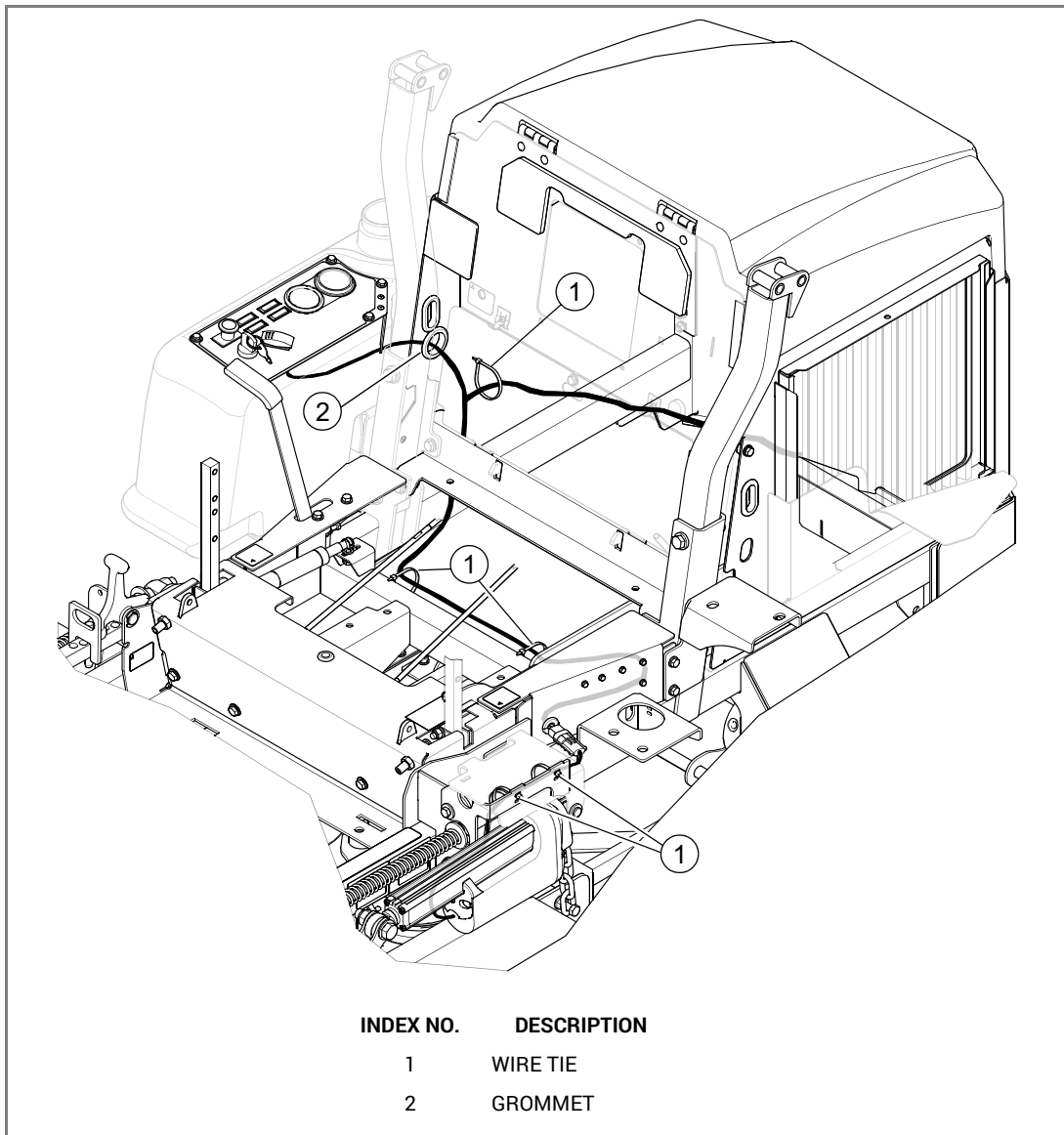


FIG. 13

26. Remove the instrument panel from the right fuel tank. FIG. 14
27. Using a sharp knife, cut out a slot in the instrument panel decal for the switch, then insert the switch.
28. Attach the connector with two orange wires to the middle of the switch.

NOTE: The single orange wire lifts the deck (switch forward action: up) and the single red wire lowers the deck (switch rear action: down). FIG. 15

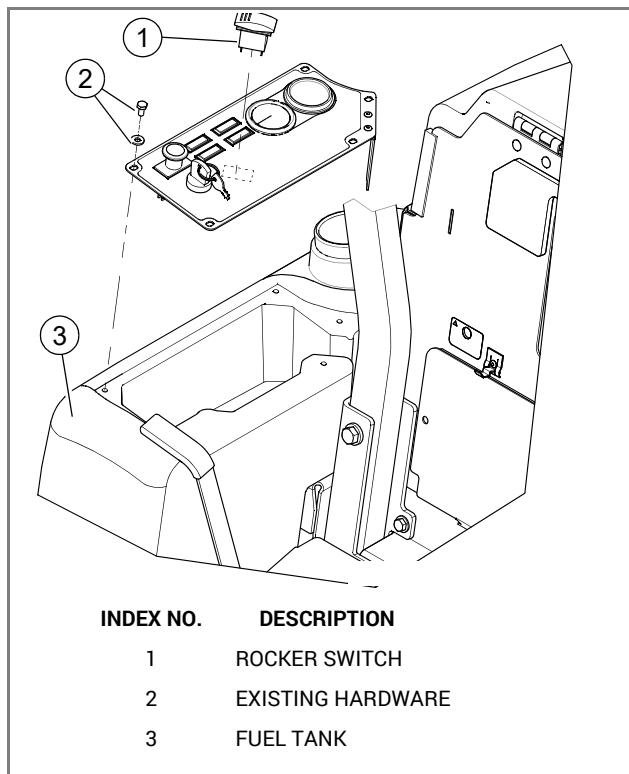


FIG. 14

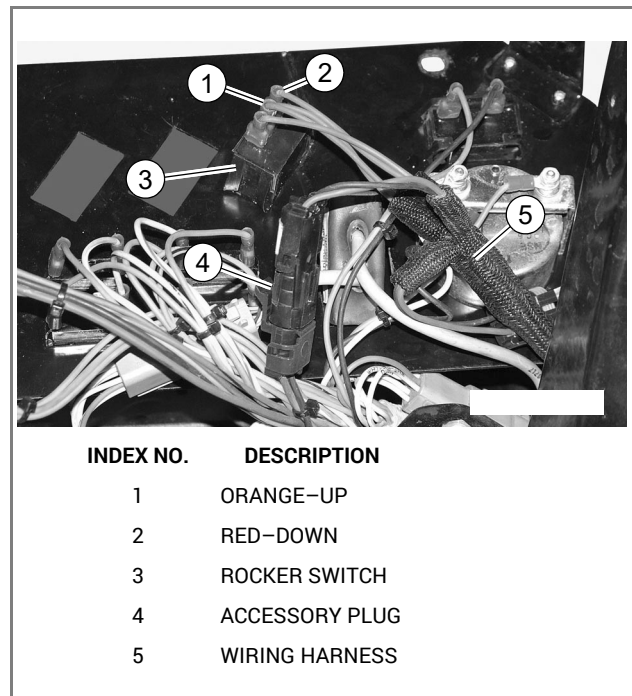


FIG. 15

29. Locate the auxiliary connector body underneath the instrument panel and remove the cap. FIG. 16
30. Plug the deck lift harness connector into the auxiliary plug. FIG. 17
31. Make sure that the wiring harnesses are routed through the slot in the bottom of the control panel correctly.

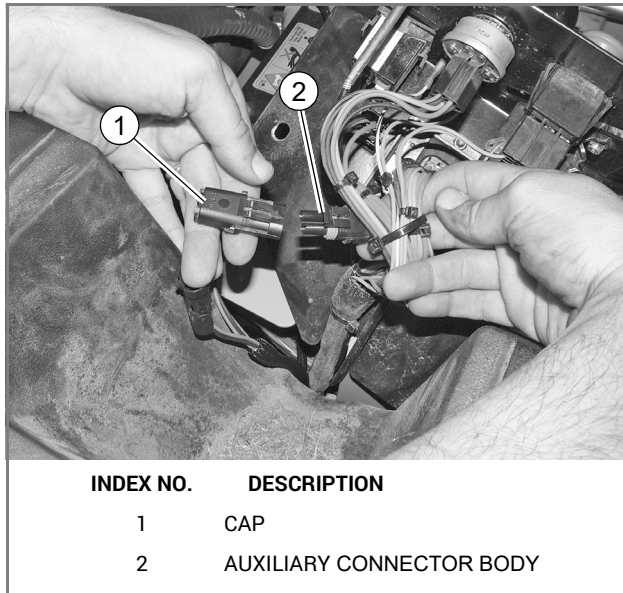


FIG. 16

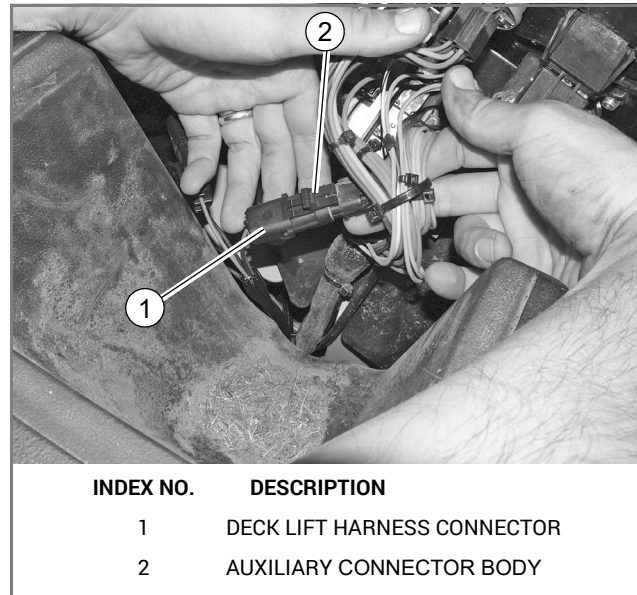


FIG. 17

32. Re-attach the instrument panel to the right fuel tank.
33. Re-install the grommet in the frame. FIG. 13
34. Open the hood, remove the rear panel and the radiator screen.
35. Route the other leg of the deck-lift-wiring harness between the engine and the cooling fan. Use wire ties to secure the harness to the engine mount.

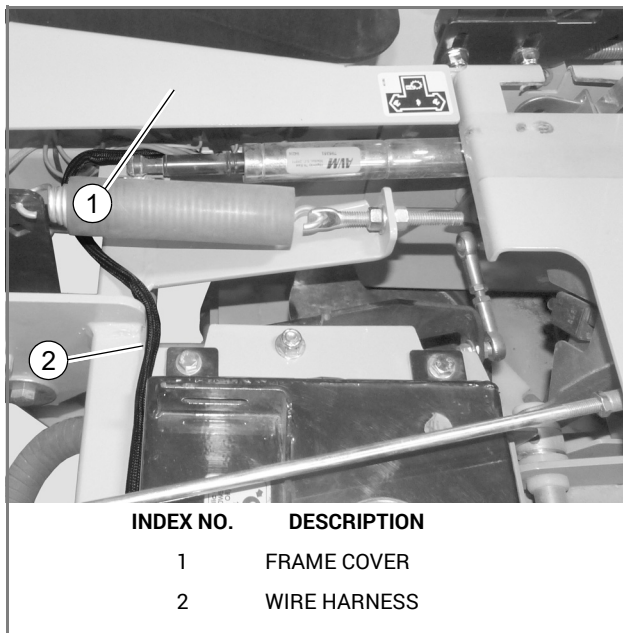


FIG. 18

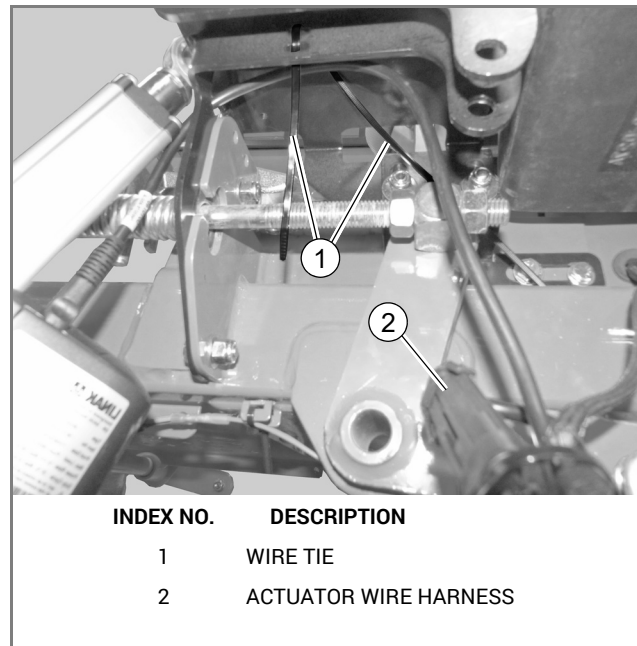


FIG. 19

36. Use wire ties as needed to tie all of the harness wires under the frame cover together as shown. FIG. 18
37. Coil the excess wire and secure it using the provided wire ties as needed. FIG. 19
38. Connect the actuator's wire harness to the provided wire harness adapter and then to the frame cover harness pigtail. FIG. 20
39. Make sure all of the wires are out of the way of moving parts, then use the provided wire ties to keep the wires inside of and within the top 1.5" of the rear mounting bracket.

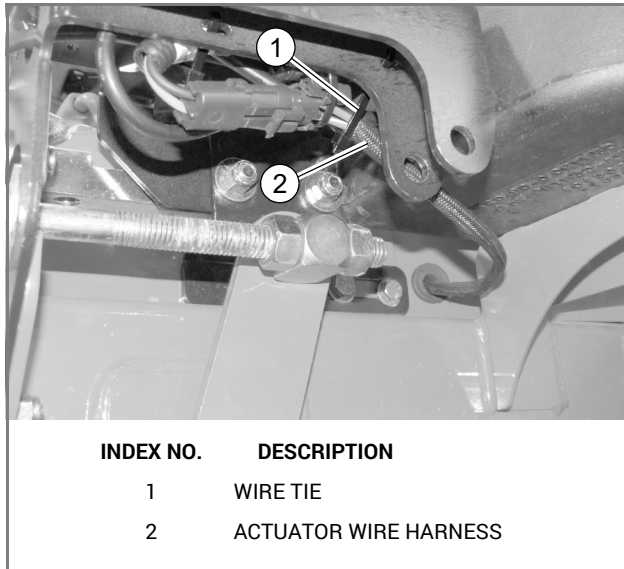


FIG. 20

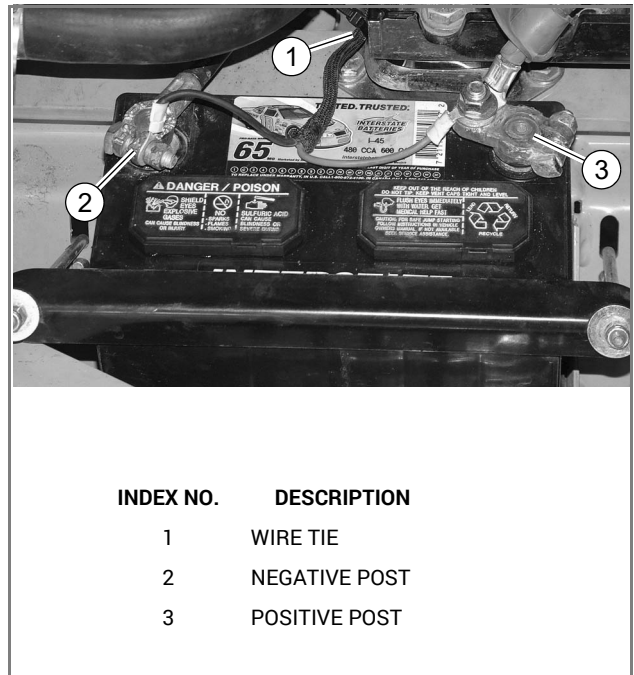


FIG. 21

- 40. Re-connect the negative battery cable and turn the ignition switch to the "ON" position. FIG. 21
- 41. Raise the deck and remove the deck blocks. The mower is ready for adjustment.

ADJUSTMENT

1. Place the deck in the transport position.
2. Turn the ignition switch key to the "ON" position.
NOTE: The engine does not need to be running when performing this operation but the ignition switch must be in the "ON" position.
3. Press down on the rear end of the rocker switch—the actuator rod should extend out of the actuator housing. If it retracts instead of extending, then the switch's front and rear wires are reversed. Switch these two wires around.
4. Hold the rocker switch down until the actuator rod is extended to its full length. Then, retract the actuator rod approximately a 1/2". Turn ignition switch to the "OFF" position.
5. Slide the upper spacer bushing in the lift pivot slot until it makes contact with the actuator lift arms. Tighten the hardware to prevent the actuator rod from bottoming out during operation. FIG. 22
6. Check to see that the stop handle is in the middle of the transport slot when the actuator rod is fully extended. If it is not, loosen the bolt and nut in the slot on the lift pivot assembly and adjust the stop using the slot in the lift pivot assembly until the stop handle is in the middle of the transport slot. The mower is ready for testing. FIG. 22 & FIG. 23

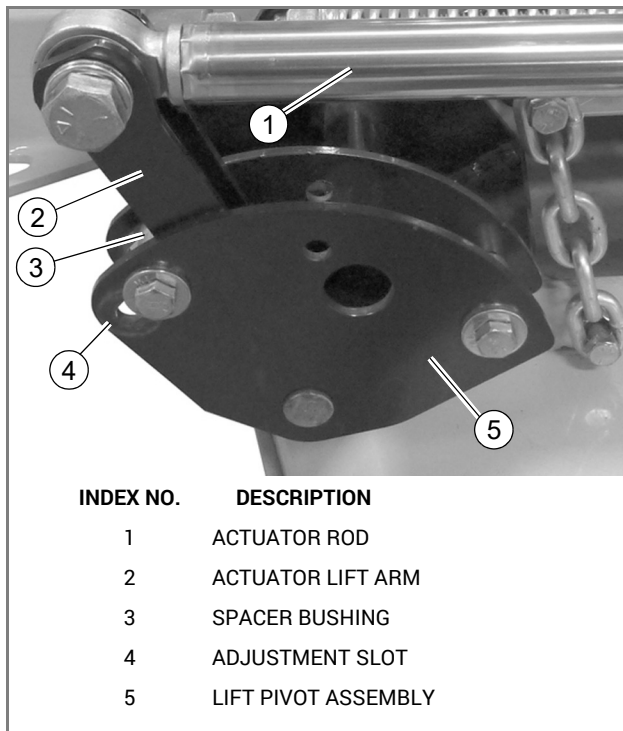


FIG. 22

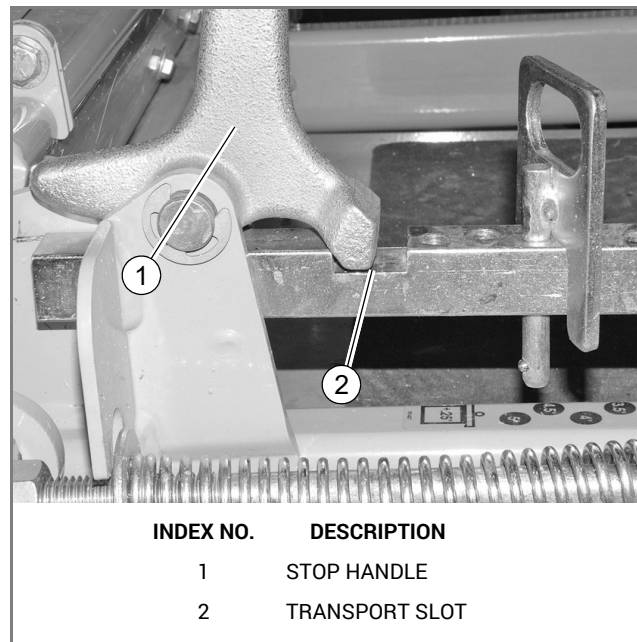


FIG. 23

TESTING

After the assembly is completed, test the functionality of the deck lift actuator.

IMPORTANT: The operator must be on the seat.

1. Turn the ignition switch to the "ON" position. Do not start the engine.

NOTE: The ignition switch must be in the "ON" position before the deck lift actuator will work. However, the engine does not need to be running.

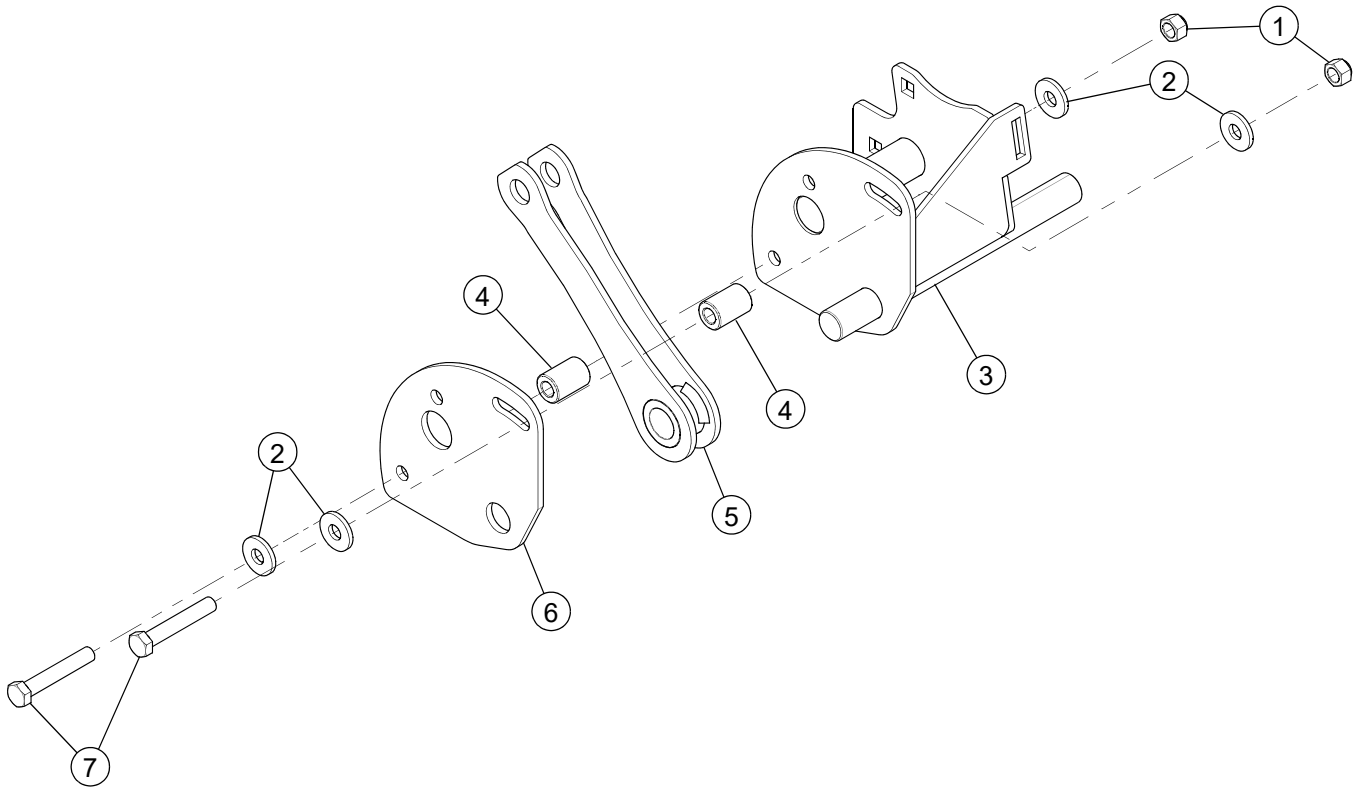
2. Push down on the front side of the deck lift switch—the deck should rise. The deck should stop when the switch is released.
3. Continue to raise the deck until it reaches the deck transport position stop.
4. If necessary, release the deck from the transport position.
5. Push down on the rear side of the deck lift switch—the deck should lower. The deck should stop when the switch is released.
6. Continue to lower the deck until it reaches the front (lowest) height location.

IMPORTANT: If the deck lift does not function per the previous steps, contact your Dealer for assistance.

OPERATION

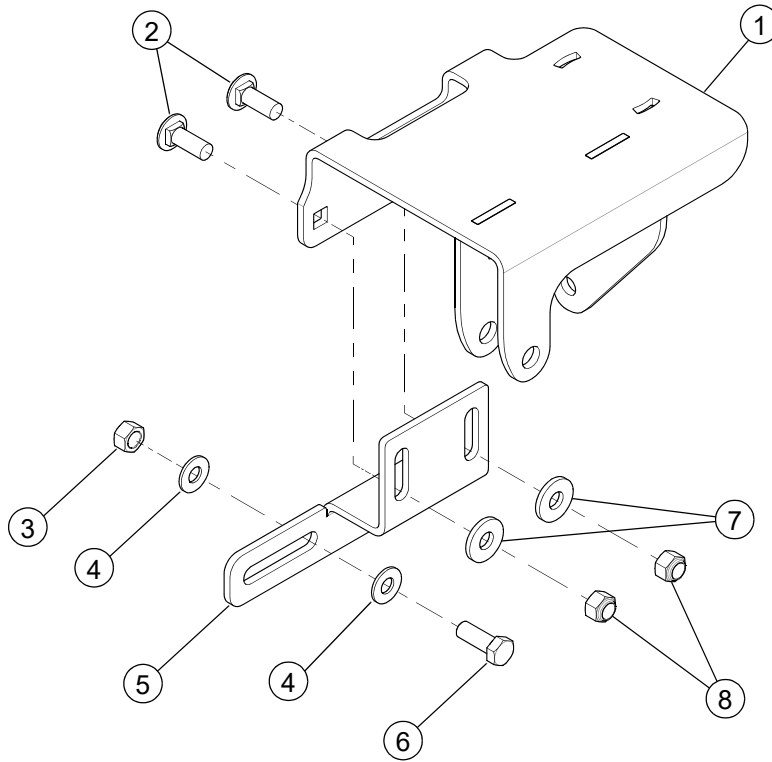
IMPORTANT: The actuator is not designed to hold the mower deck in position while mowing. It is designed to raise and lower the deck only.

1. Using the deck lift switch, raise the deck to release pressure from the deck cutting height pin.
2. Remove the pin from the deck cutting height adjustment bar and insert it in the desired cutting height hole.
3. Using the deck lift switch, lower the deck until the cutting height block is resting against the deck cutting height pin.
4. Release the deck lift switch and continue operation.

DECK LIFT MOUNT ASSEMBLY

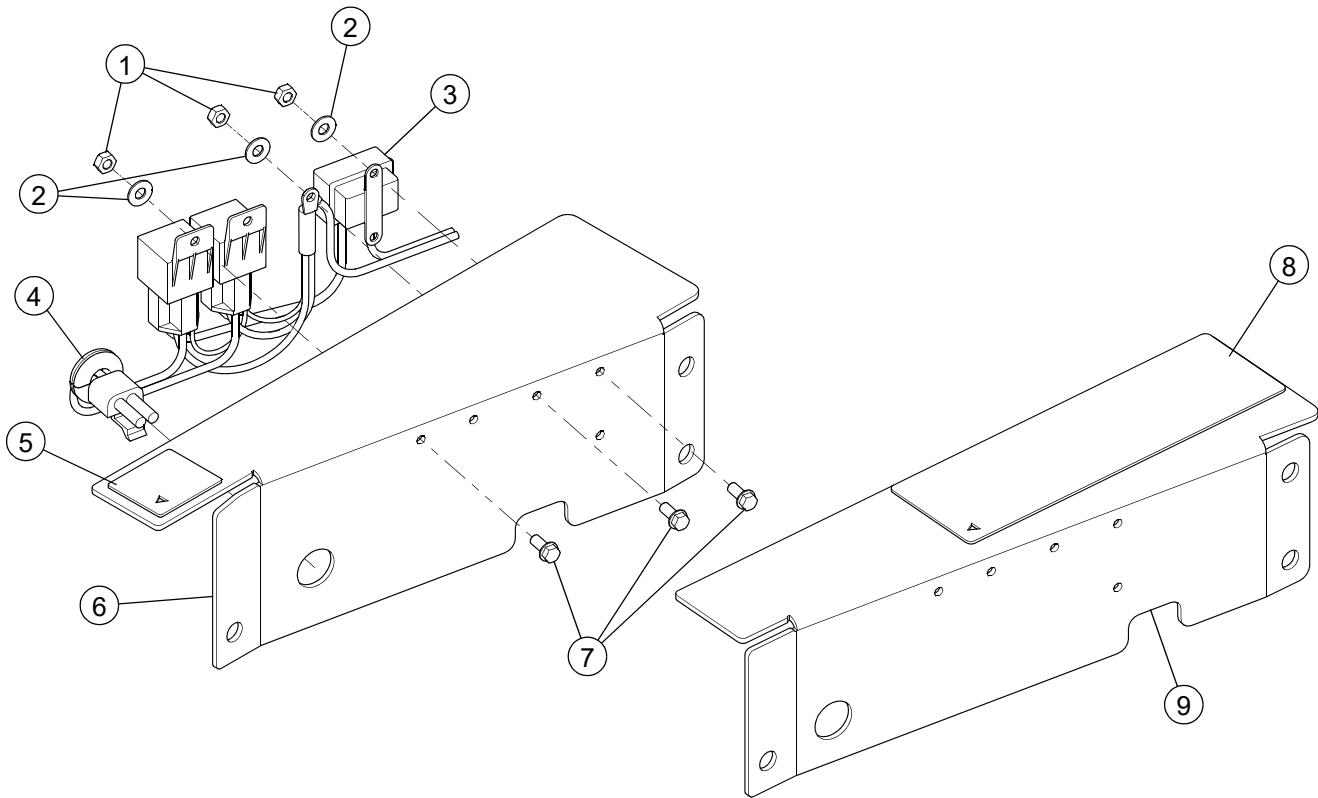
INDEX NO.	PART NO.	QTY.	DESCRIPTION
1	086660	2	NT .375-16 G5 NL
2	712919	4	FW .406 X 1.0 X .12 HRD Z
3	114941	1	FRONT DECK LIFT MOUNT
4	102194	2	SPACER BUSHING
5	123588	1	LIFT ARM
6	115881	1	OUTER DECK LIFT PLATE
7	056036	2	CS .375-16 X 2.25 HX G5

ACTUATOR MOUNT ASSEMBLY



INDEX NO.	PART NO.	QTY.	DESCRIPTION
1	123590	1	ACTUATOR MOUNT
2	025395	2	CB .375-16 X 1.00 G5 ZNY
3	054502	1	NT .375-16 HX G5
4	767954	2	FW .379 X .813 X .063
5	114918	1	HYDRO DECK ADJ MOUNT BRKT
6	036244	1	CS .375-16 X 1.00 HX G5
7	712919	2	FW .406 X 1.0 X .12 HRD Z
8	086660	2	NT .375-16 G5 NL

SIDE PANEL ASSEMBLY



INDEX NO.	PART NO.	QTY.	DESCRIPTION
1	059832	5	NT #10-24 HX NL ZN
2	017079	5	FW .250 X .56 X .04 SAE Z
3	601672	1	WIRE HARNESS
4	797431	1	GM .50 X 1.125 X .875 X .063
5	785139	1	LS STEERING DECAL
6	115964	1	FRAME COVER
7	060731	5	CS 10-24 X .50 HX FLK ZN
8	785121	1	OPERATION RIGHT DECAL
9	110155	1	RS DECK LIFT COVER