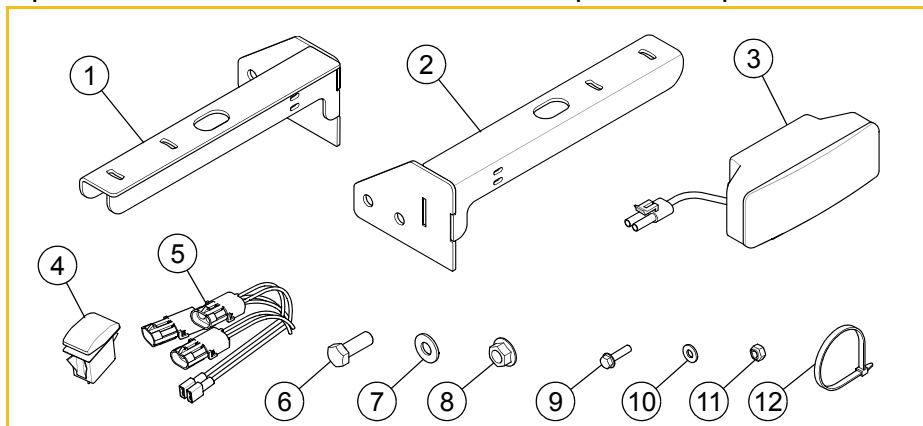


LIGHT KIT

PART NUMBER: 123549

PACKING LIST:

Listed below are parts included in this kit. If any parts are missing or damaged, please contact the Hustler® Parts Department. Retain these instructions for replacement parts.



INDEX NO.	PART NO.	DESCRIPTION	QTY
1	123551	LIGHT SUPPORT, RS	1
2	123550	LIGHT SUPPORT, LS	1
3	601114	LED LIGHT	2
4	601116	SWITCH	1
5	601192	WIRE HARNESS	1
6	036244	CS .375-16 X 1.00 HX G5	4
7	767954	FW .379 X .813 X .063	4
8	016899	NT .375-16 HX G5 FLK	4
9	063198	CS 10-24 X .75 HX FLK ZN	4
10	704932	FW .219 X .50 X .048	8
11	059832	NT #10-24 HX NL ZN	4
12	000331	WIRE TIE	5

ASSEMBLY:

1. Park the mower on a solid, level surface; set the park brakes; shut-off the engine; and remove the ignition key.
2. Lift the seat and disconnect the negative battery cable.
3. Locate the light supports and the lights. Attach the lights to the light supports. FIG. 1

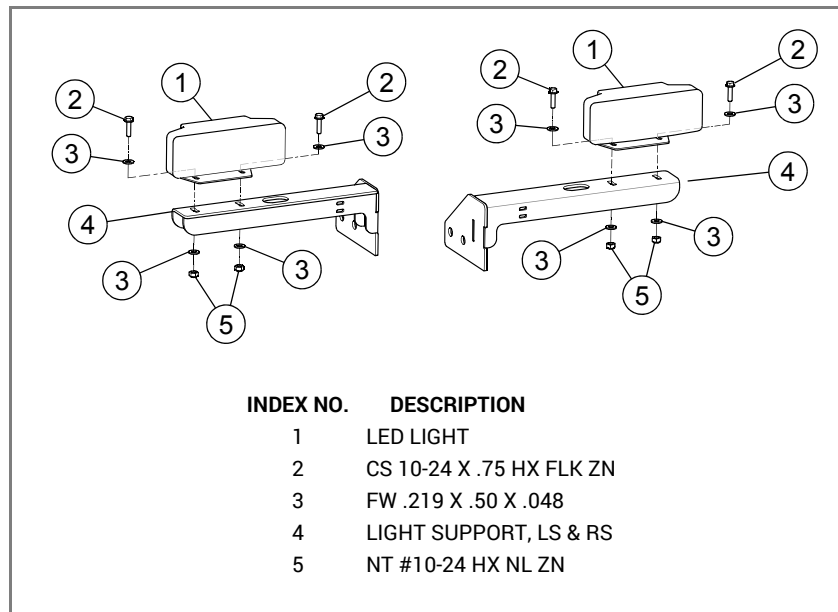


FIG. 1

4. Locate the mower's left frame cover and remove the front mounting cap screw, flat washer and clip nut. Discard this hardware as it will not be reused.
5. Remove the hardware from the rear of the steering box.
6. Repeat steps 4 & 5 for the right side.

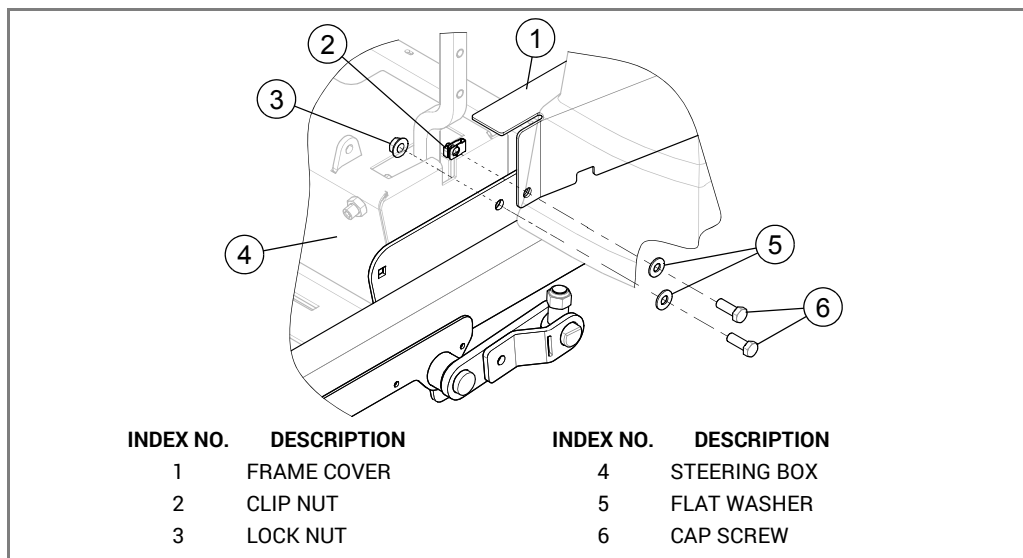


FIG. 2

7. Attach the light supports to the right and left sides of the mower frame. FIG. 3

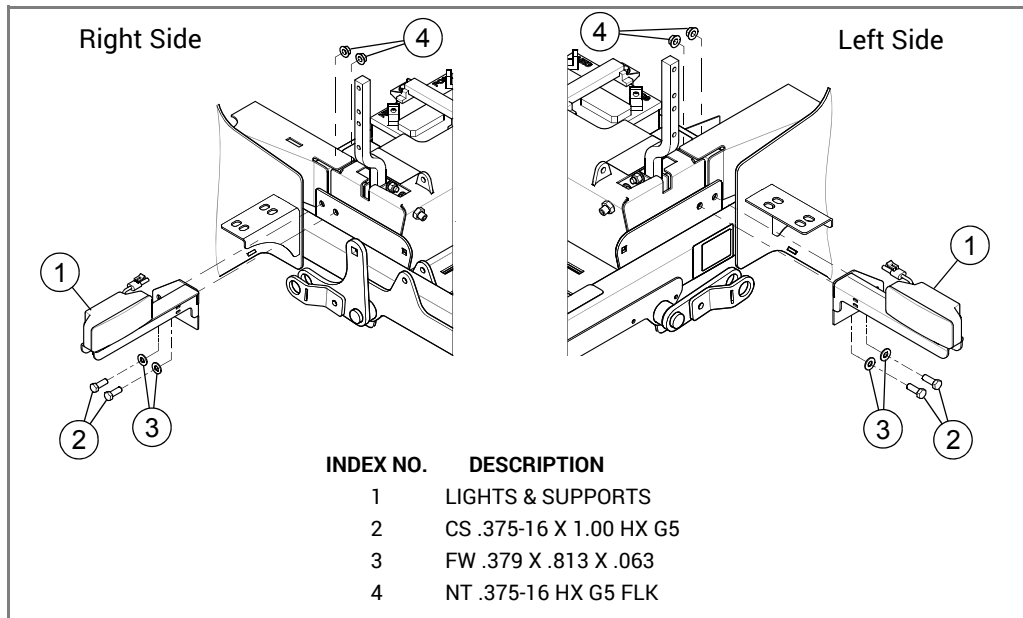


FIG. 3

8. Remove the control panel from the right fuel tank.

9. Locate the slot next to the ignition switch in the control panel. Using the panel as a guide, cut and remove the part of the decal that covers the slot. FIG. 4

10. Remove the knockout in the control panel.

11. Insert the switch into the slot, oriented as shown. It will snap into place. FIG. 5

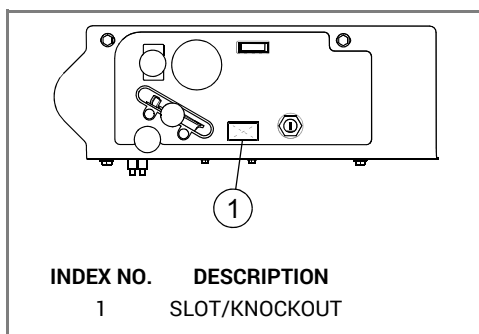


FIG. 4

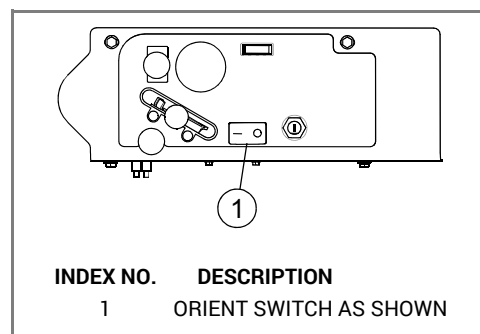


FIG. 5

12. Route the wire harness from the right side light, down through the hole in the light support, and between the frame cover and the side panel. Route the wire harness through the opening in the bottom of the control panel. FIG. 6

13. Route the kit wire harness from the inside area beneath the seat, under the right steering damper and up through the opening in the bottom of the control panel. FIG. 6
14. Connect the female blade terminals on the new wire harness to the switch (polarity is not critical). FIG. 7
15. Remove and discard the cap from the auxiliary connector. Plug the kit wire harness connector to the auxiliary connector. FIG. 7
16. Plug the right side light connector into the kit wire harness connector under the control panel. FIG. 7
17. Route the wire harness from the left side light, down through the hole in the light support, and between the frame cover and the side panel. Route the wire harness under the left frame cover and under the steering damper. Plug the connector into the kit wire harness connector as shown. FIG. 6
18. Re-attach the control panel.
19. Secure the wire harnesses with wire ties: one (1) on each light support, two (2) on the mower frame, and one (1) at the base of the control panel opening. Make sure the harnesses are not pinched and are away from moving parts.
20. Re-connect the negative battery cable.

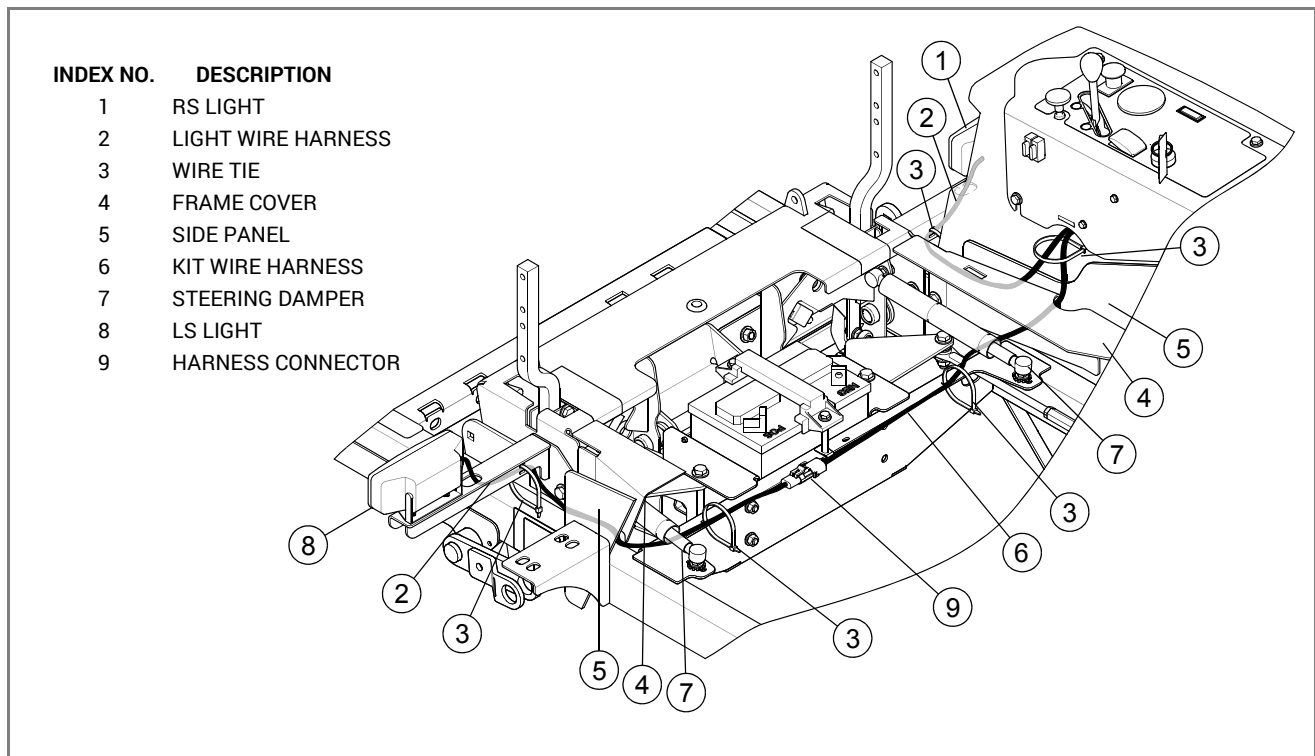


FIG. 6

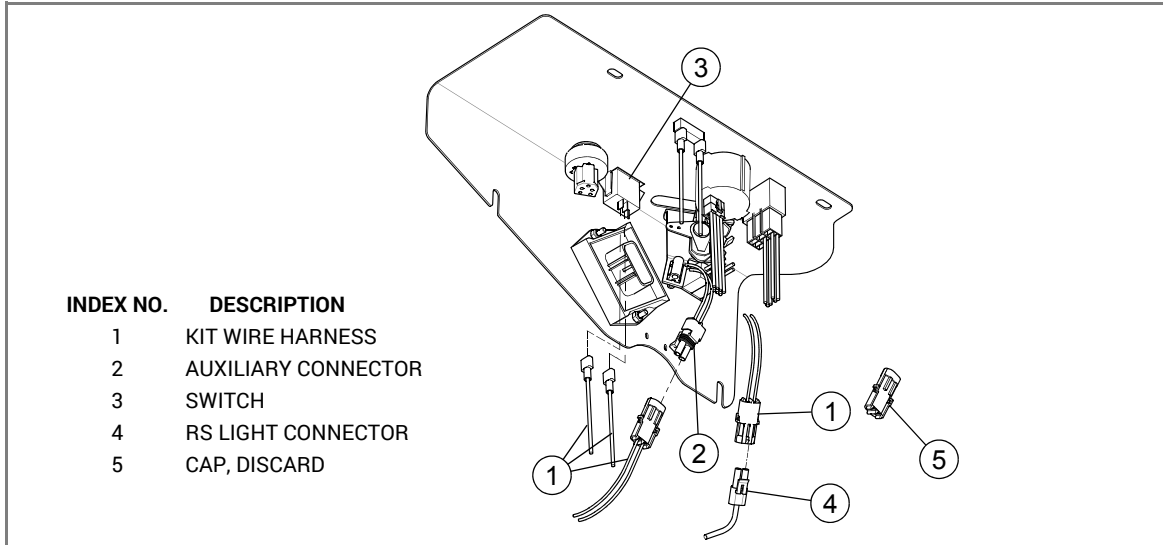


FIG. 7