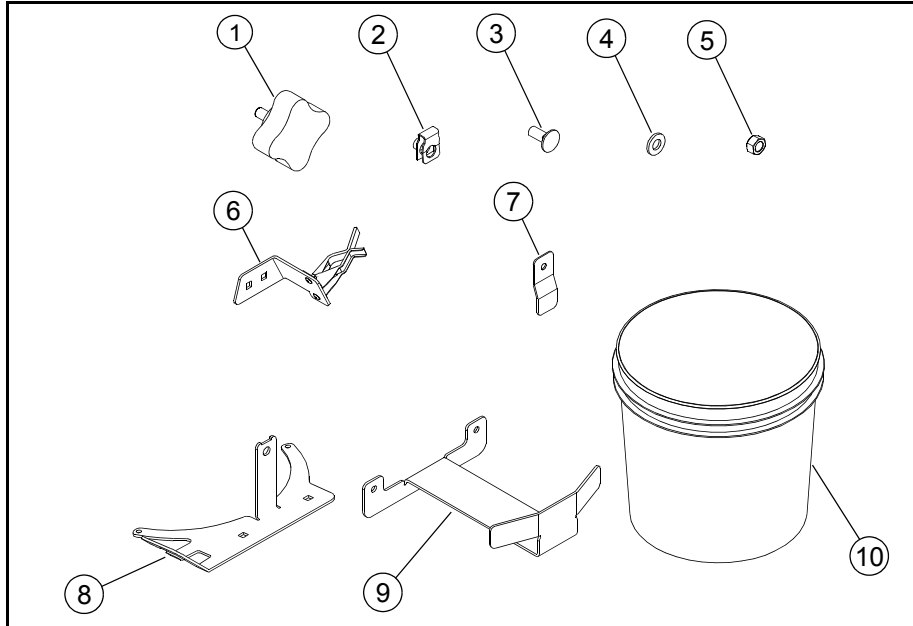


**Packing List**

Listed below are parts included in this kit. If any parts are missing or damaged, please contact the Excel Parts Department. Retain these instructions for replacement parts.



INDEX NO.	PART NO.	DESCRIPTION	QTY.
1	792002	KNOB 5/16-18 X 3/4"	1
2	601069	CN .312-18 X .20 MAX THK	1
3	016253	CB .312-18 X .75 FUL ZN	4
4	768523	FW .343 X .687 X .051/.080H	4
5	058776	NT .312-18 HX G5 ZY NL	4
6	122824	TOOL HOLDER BRACKET	1
7	122807	BUCKET JOGGLE	1
8	122806	BUCKET SADDLE	1
9	122808	BUCKET BRACKET	1
10	606397	TRASH BUCKET	1

**⚠ WARNING ⚠**

Shorts caused by battery terminals or metal tools touching metal mower components can cause sparks. Sparks can cause a battery gas explosion which will result in personal injury.

- Prevent the battery terminals from touching any metal mower parts when removing or installing the battery.
- Do not allow metal tools to short between the battery terminals and metal mower parts.

Incorrect battery cable routing could cause damage to the mower and battery cables. This can cause sparks which can cause a battery gas explosion which will result in personal injury.

- Always **disconnect** the negative (black) battery cable(s) before disconnecting the positive (red) cable(s).
- Always **connect** the positive (red) battery cable(s) before connecting the negative (black) cable(s).

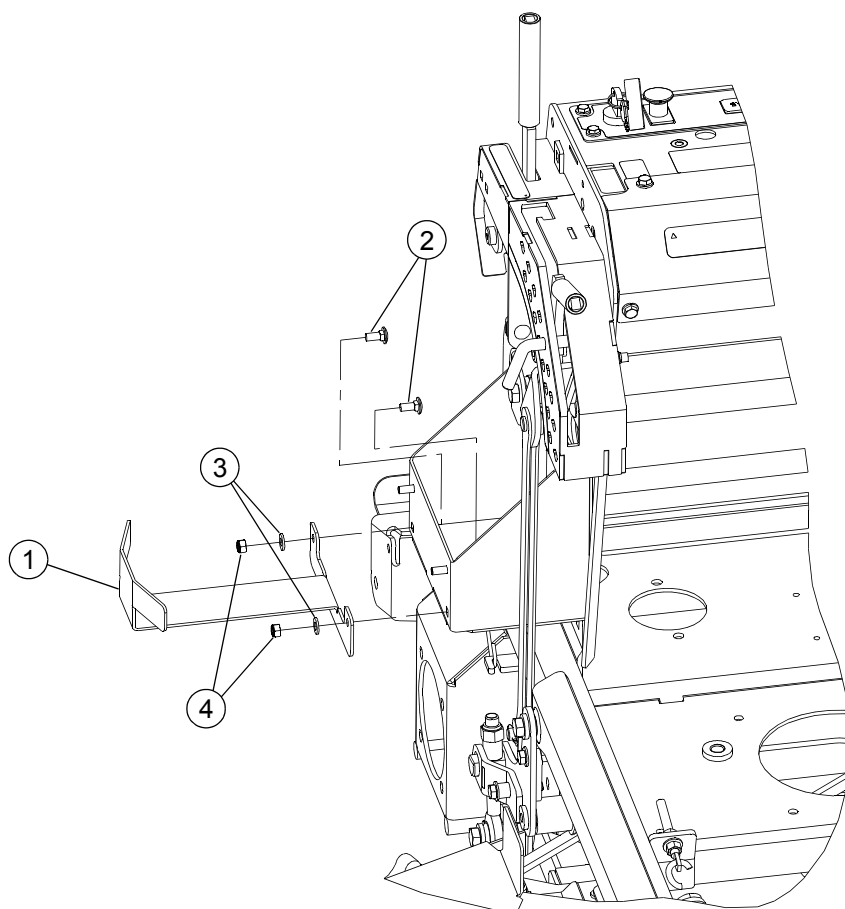
**Assembly**

1. Park the mower on a solid, level surface; set the park brake; shut-off the engine; and remove the ignition key.
2. Chock the wheels to prevent the mower from moving.

3. Remove and retain the hardware holding the battery cover in place.
4. Disconnect the negative (black) battery cable and then the positive (red) battery cable.
5. Remove the battery.
6. Attach the bucket bracket to the battery case using the provided carriage bolts, flat washers and nuts. FIG. 1
7. Place the clip nut on the bucket saddle as shown in FIG. 2.
8. Attach the bucket saddle to the battery cover using the provided carriage bolts, flat washers and nuts. FIG. 2
9. Replace the battery and connect the positive battery cable, then connect the negative battery cable.
10. Replace the battery cover using the existing hardware. Tighten the hardware. FIG. 3
11. Put the trash bucket on the bucket stand and hold it in place with the bucket joggle and knob. FIG. 4
12. Attach the tool holder bracket to the mower frame with provided carriage bolts, flat washers and nuts. FIG. 5
13. Remove the wheel chocks. The machine is ready to operate.

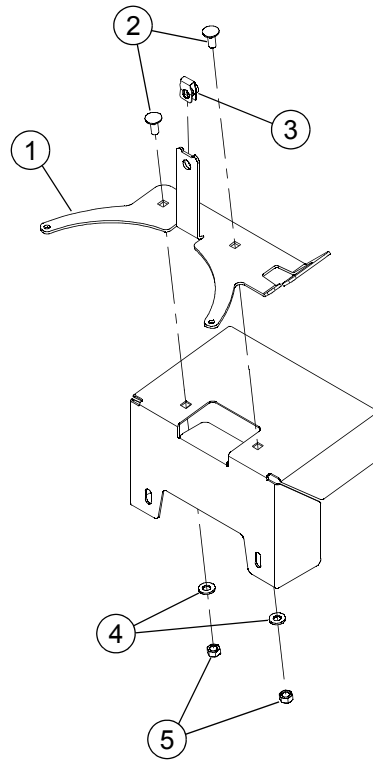

**WARNING**


Always bring the mower to a complete stop before using a trash pickup tool to pick up paper or other trash.



INDEX NO.	PART NO.	DESCRIPTION
1	122808	BUCKET BRACKET
2	016253	CB .312-18 X .75 FUL ZN
3	768523	FW .343 X .687 X .051/.080H
4	058776	NT .312-18 HX G5 ZY NL

FIG. 1



INDEX NO.	PART NO.	DESCRIPTION
1	122806	BUCKET SADDLE
2	016253	CB .312-18 X .75 FUL ZN
3	601069	CN .312-18 X .20 MAX THK
4	768523	FW .343 X .687 X .051/.080H
5	058776	NT .312-18 HX G5 ZY NL

FIG. 2

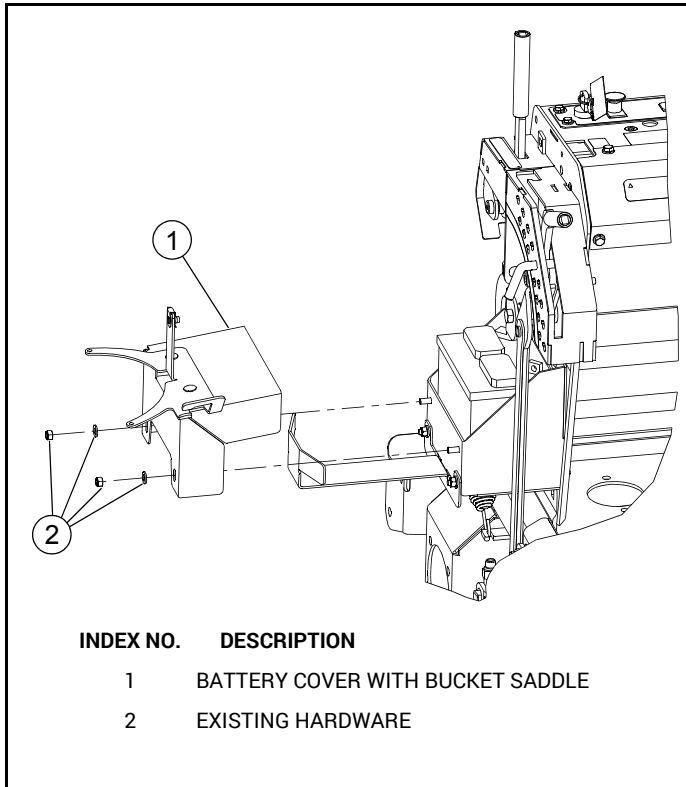


FIG. 3

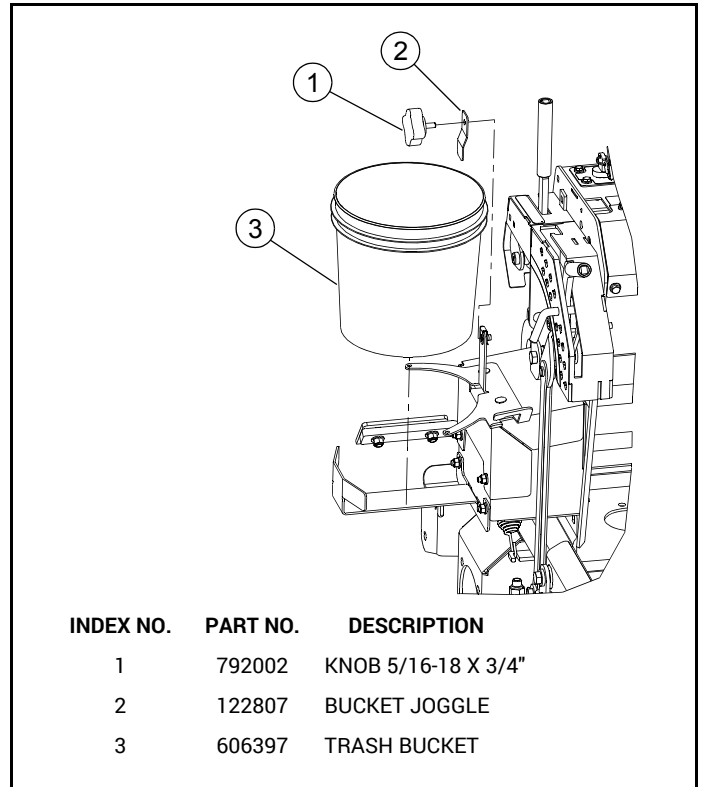


FIG. 4

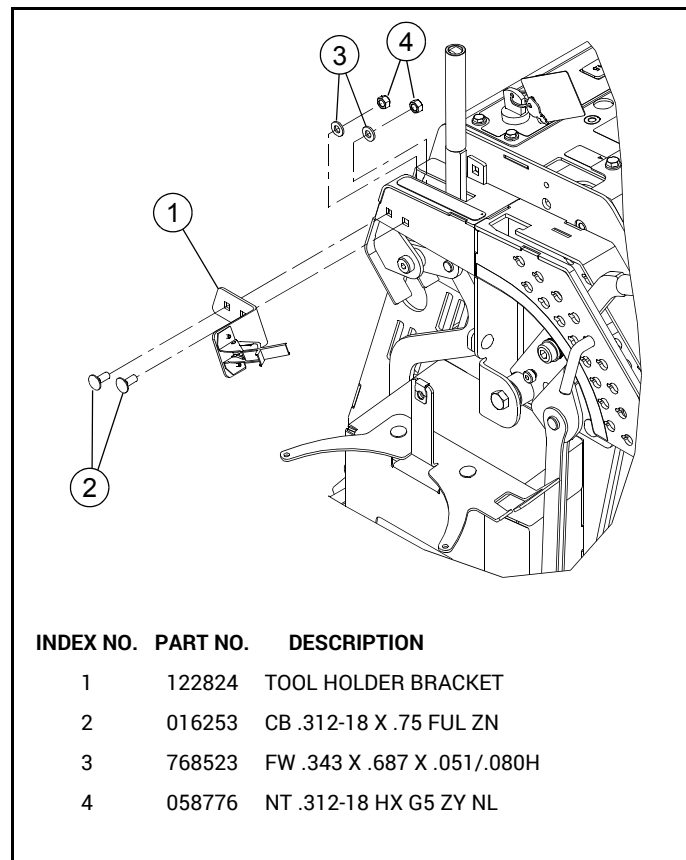


FIG. 5