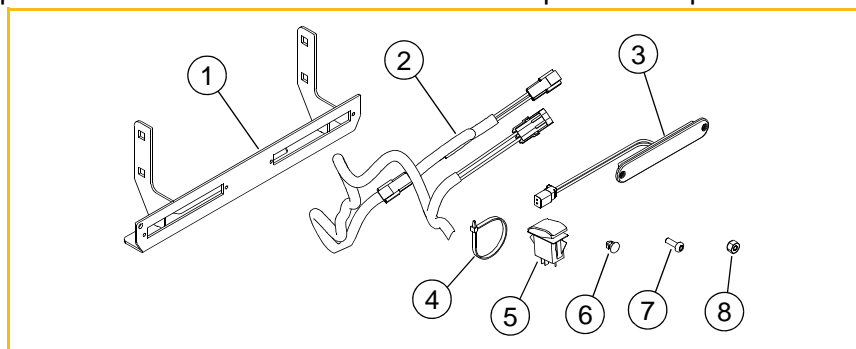


SUPER S LIGHT KIT (36")

PART NUMBER: 122748

PACKING LIST:

Listed below are parts included in this kit. If any parts are missing or damaged, please contact the Hustler® Parts Department. Retain these instructions for replacement parts.



INDEX NO.	PART NO.	DESCRIPTION	QTY
1	122742	LIGHT MOUNT	1
2	606387	LIGHT HARNESS	1
3	605003	LIGHT	2
4	000331	WIRE TIE	8
5	601116	SWITCH	1
6	604307	PUSH BUTTON MOUNT	6
7	605209	CS #8-32 X .500 PH TRX	4
8	605208	NT #8-32 HX NL ZN	4



WARNING



Use extreme caution if it becomes necessary to operate the unit, transporting or mowing, after dark or in low light situations. Only operate in open areas where there are no overhead obstructions; i.e. guide wires, tree branches, low overhangs, etc. Operate only in areas where the operator is thoroughly familiar with the terrain and any potential hazards. The lights are designed to illuminate forward and down and will not illuminate to the side or upward.

ASSEMBLY:

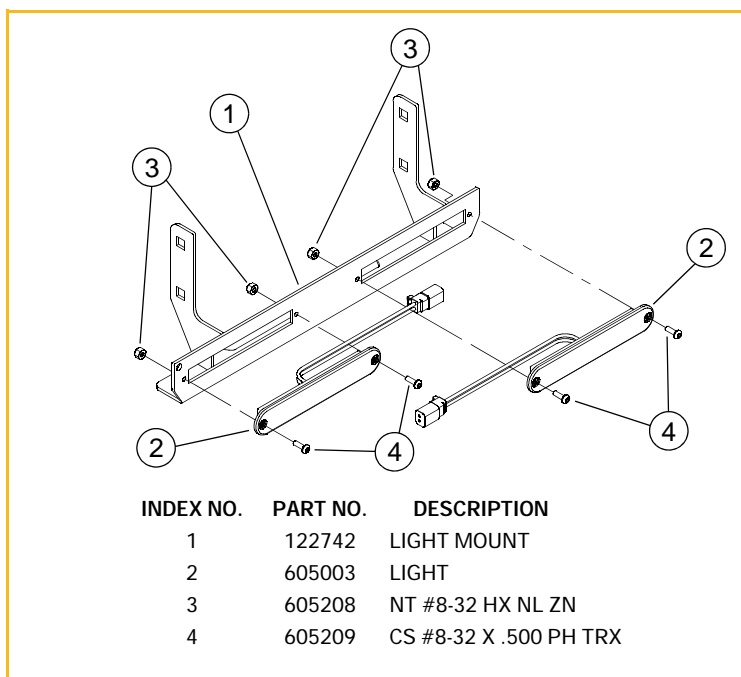
NOTE: Installing this light kit will require access to the mower's electrical system beneath the instrument panel. The following tools are needed:

- 7/16", 9/16" and 11/32" wrenches
- Utility knife or other sharp knife (for cutting the instrument panel decal)
- Side cut pliers or equivalent (for trimming wire ties)

**WARNING**

Shorts caused by battery terminals or metal tools touching metal mower components can cause sparks. Sparks can cause a battery gas explosion which will result in personal injury.

1. Park the mower on a solid, level surface; set the park brakes; shut-off the engine; and remove the ignition key. Remove the battery cover and disconnect the negative battery cable.
2. Chock the wheels.
3. Attach the lights to the light bracket using the provided hardware. FIG. 1

**FIG. 1**

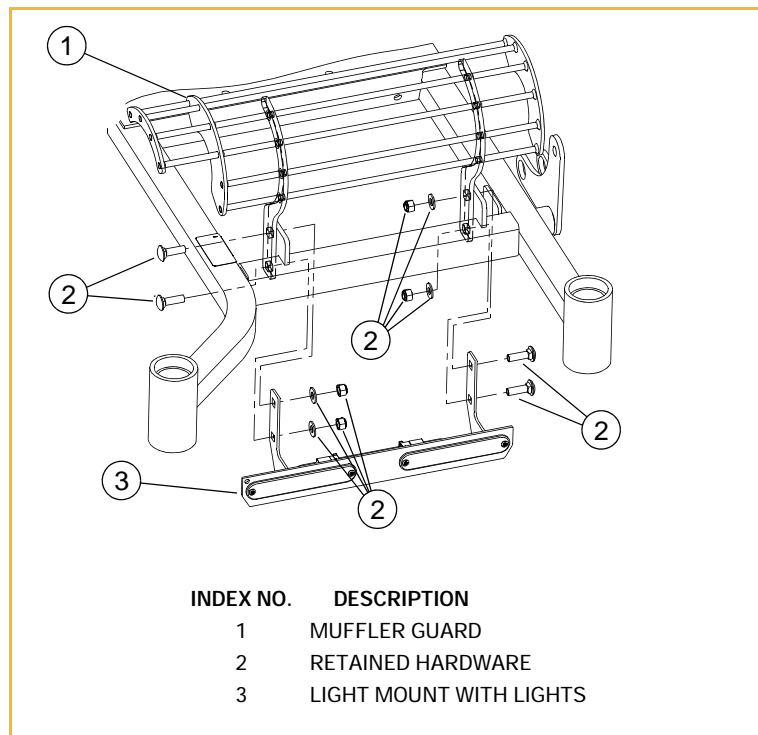


FIG. 2

4. Remove but retain the hardware which attaches the muffler guard to the frame.
FIG. 2
5. Mount the light bracket and the muffler guard to the frame using the hardware removed in the previous step. FIG. 2
6. Connect the light harness to the lights in the light mount.

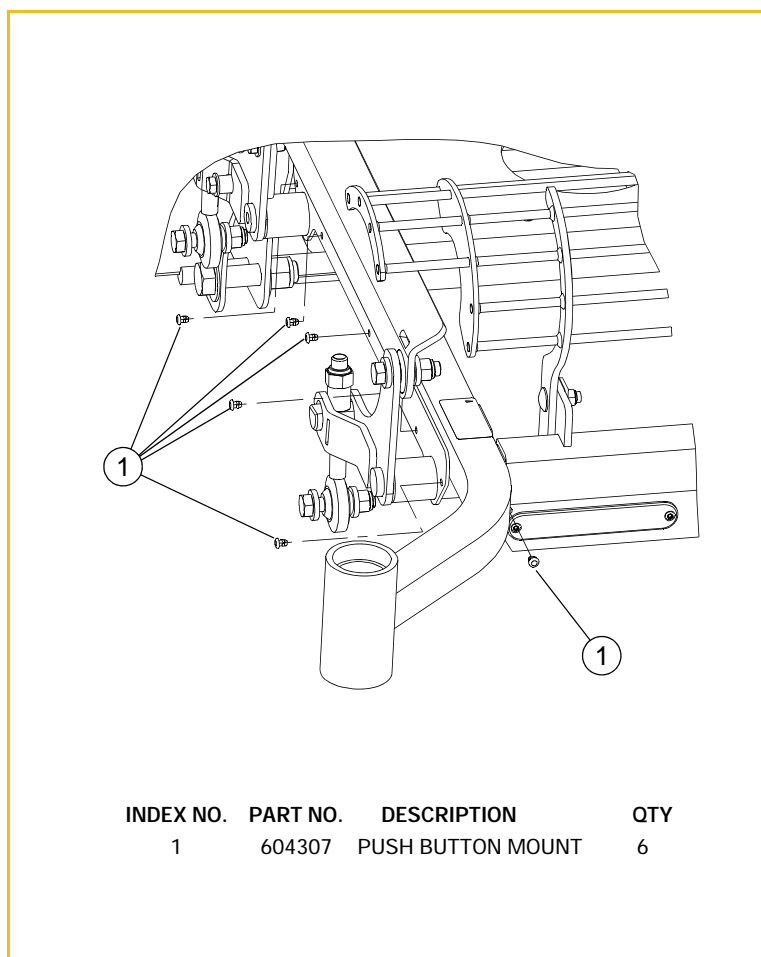


FIG. 3

7. Insert push button mounts into the mounting holes located in the frame. FIG. 3

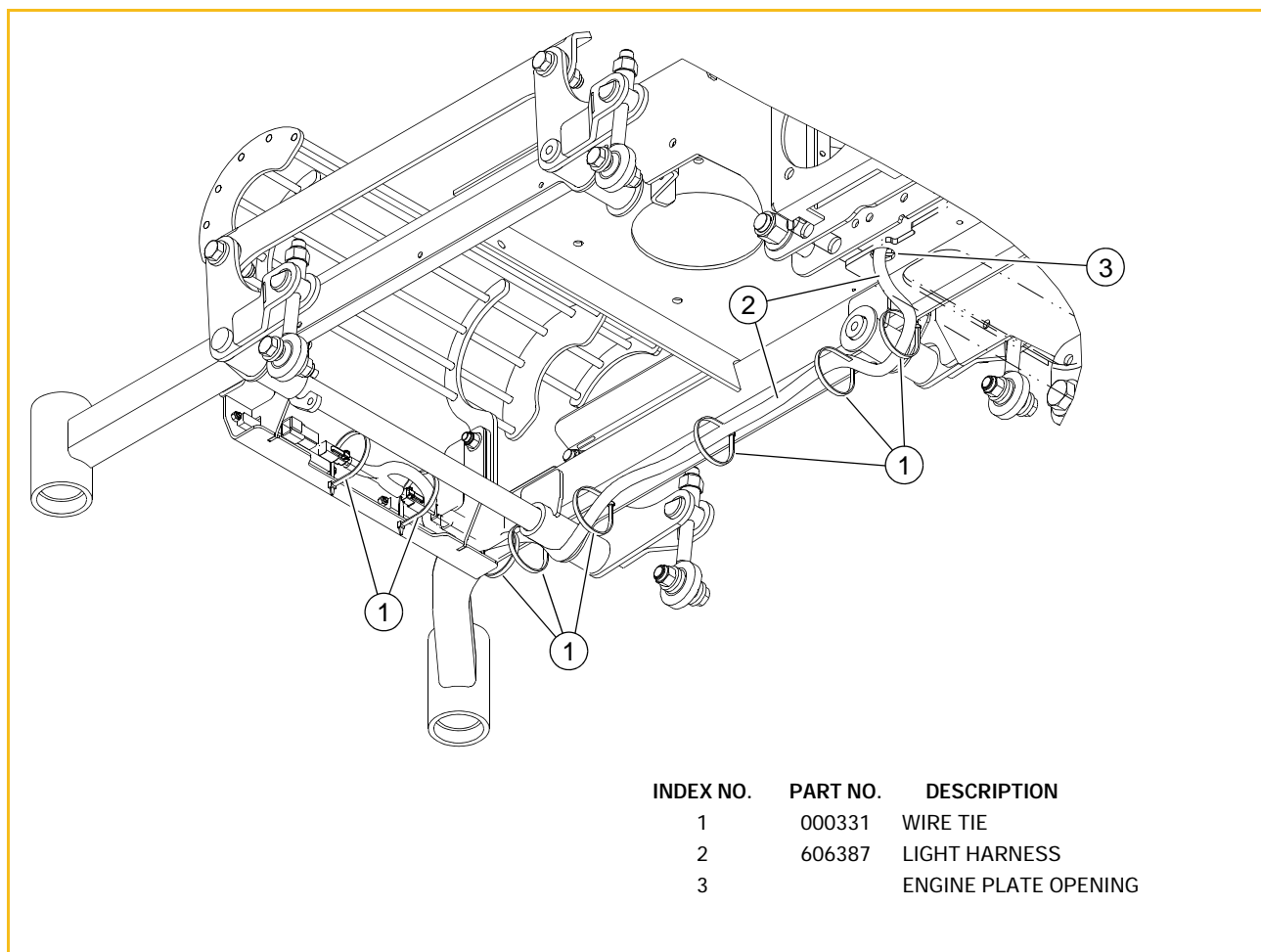
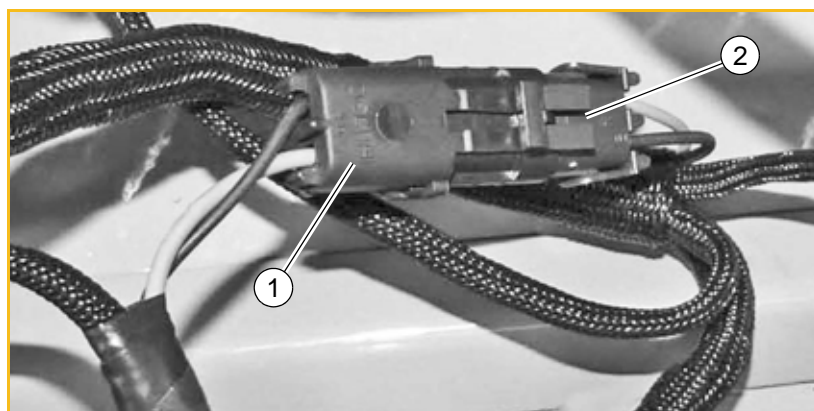


FIG. 4

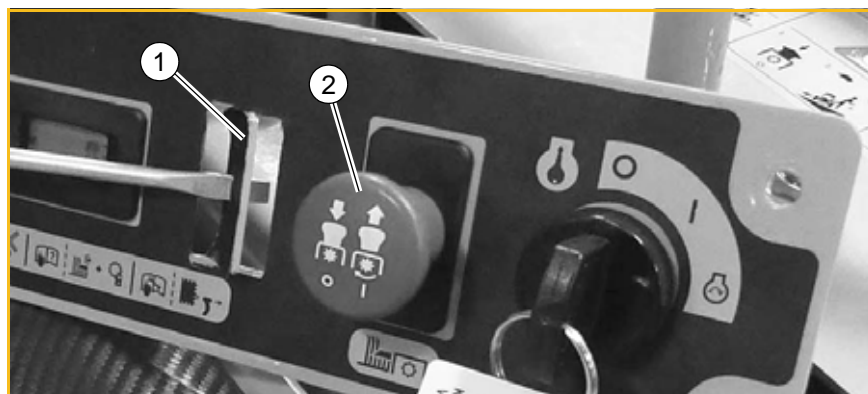
8. Insert wire ties through the push button mounts and then route the light harness along the inside of the frame, loosely securing it in place with the wire ties. FIG. 4
9. Route the light harness through the engine plate opening (not outside the frame) to the area behind the engine. FIG. 4
10. Use the existing harness clamps to secure the light harness slack (no need to remove the clamps, just thread the light harness through).
11. Check the light harness routing and make sure the harness does not come in contact with any moving parts. Correct as necessary.



INDEX NO.	DESCRIPTION
1	LIGHT HARNESS CONNECTOR
2	MAIN HARNESS CONNECTOR

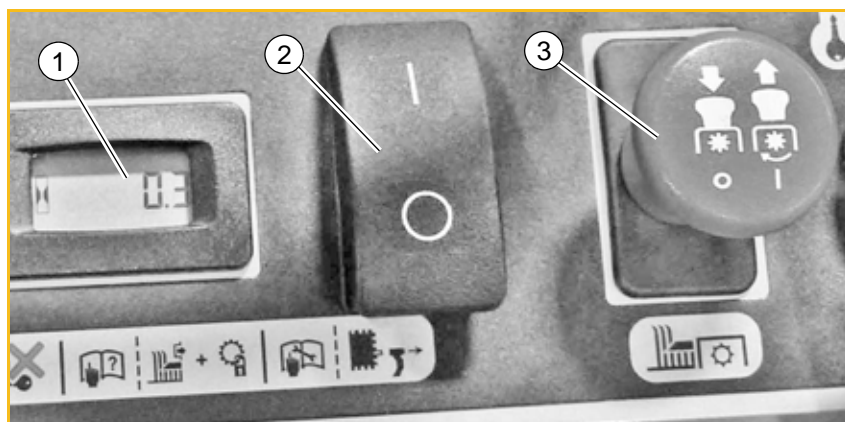
FIG. 5

12. Locate the connector in the main wiring harness between the engine and the operator platform. FIG. 5
13. Remove and discard the plug from the main harness connector.
14. Connect the light harness to the main wiring harness. FIG. 5
15. Check the light harness routing, pull the wire ties tight and cut off the excess wire tie.
16. Remove but retain the hardware holding the instrument panel in place. Pull the panel up and out to access the back of the instrument panel. FIG. 6
17. Locate the rectangular panel tab between the deck clutch switch and the hour meter in the instrument panel. Using the panel tab as a guide, cut through the decal from the back of the instrument panel. FIG. 6
18. Use a small pry bar to remove the panel tab. FIG. 6



INDEX NO.	DESCRIPTION
1	INSTRUMENT PANEL TAB
2	DECK CLUTCH SWITCH

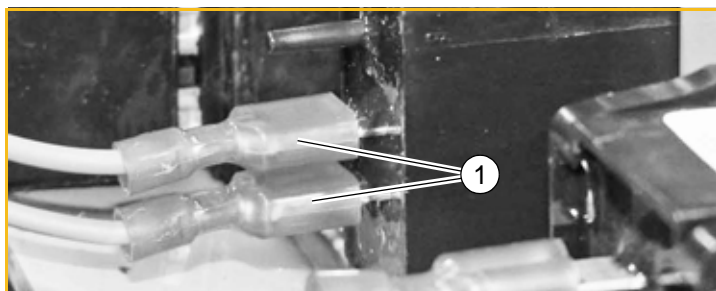
FIG. 6



INDEX NO.	DESCRIPTION
1	HOUR METER
2	SWITCH
3	DECK CLUTCH SWITCH

FIG. 7

19. Insert the light switch into the cut-out, oriented as shown in FIG. 7. It will snap into place.
20. In the instrument panel wiring area, locate the light harness and connect the two female blade terminals to the back of the light switch (polarity is not critical). FIG. 8



INDEX NO.	DESCRIPTION
1	FEMALE BLADE TERMINAL

FIG. 8

21. Reinstall the instrument panel reversing the procedure in step 16.
22. Re-connect the negative battery cable and replace the battery cover.
23. Remove the wheel chocks. The mower is ready to operate.