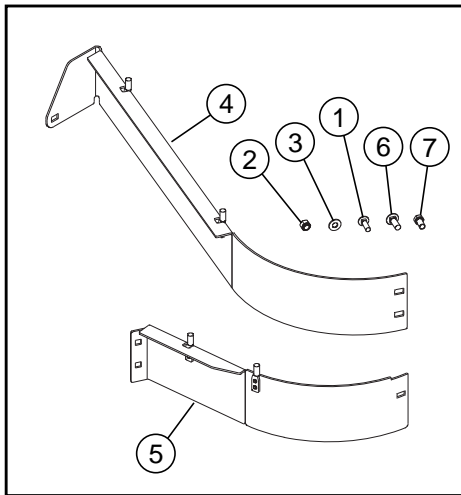


High Vacuum 48" Kit
 Part Number 121478
 High Vacuum 54" Kit
 Part Number 121479
 High Vacuum 60" Kit
 Part Number 121480

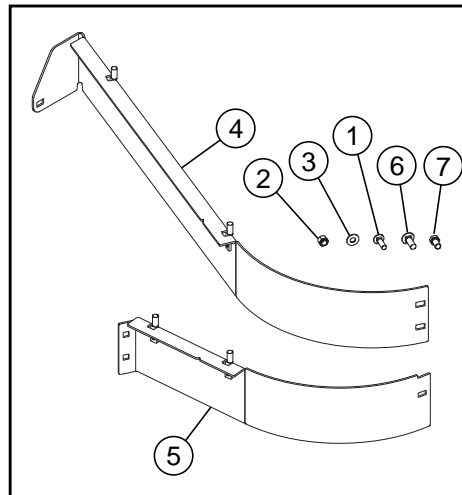
Instruction Number 121477

Packing List

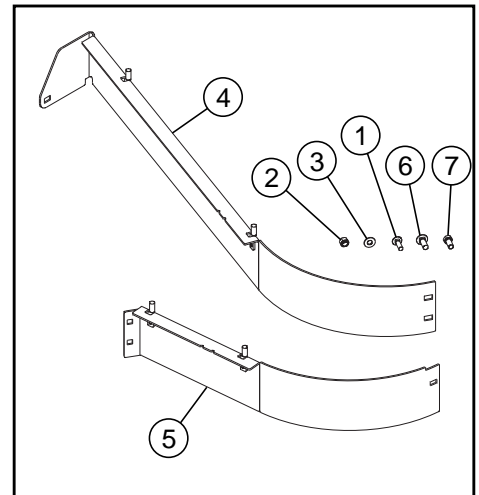
Listed below are parts included in this kit. If any parts are missing or damaged, please contact Excel Parts Department. Retain these instructions for replacement parts.



KIT 121478



KIT 121479



KIT 121480

INDEX NO.	PART NO.	DESCRIPTION	QTY
1	037887	CB .312-18 X 1.00 FULL ZN	1
2	086660	NT .375-16 NL G5	7
3	767954	FW .379 X .813 X 0.063	7
4	121495	FRONT RS BAFFLE (48" DECK)	1
	121493	FRONT RS BAFFLE (54" DECK)	
	121491	FRONT RS BAFFLE (60" DECK)	
5	121494	FRONT LS BAFFLE (48" DECK)	1
	121492	FRONT LS BAFFLE (54" DECK)	
	121490	FRONT LS BAFFLE (60" DECK)	
6	025395	CB .375-16 X 1.00 G5 ZNY	3
7	055822	CS .375-16 X .75 HX G5	4



WARNING



Use only appropriate vehicle stands, with a minimum weight rating of 2000 pounds to block the unit up. Use in pairs only. Follow the instructions supplied with the vehicle stands.

Assembly

1. Park the mower on a solid, level surface; set the park brakes; shut-off the engine; and remove the ignition key. (Disconnect the negative battery cable.)

2. Raise the front of the mower and block it up high enough to allow the kit to be installed from the underneath side of the deck. Chock the drive wheels to prevent the mower from moving.



WARNING



Use caution when working under the deck as mower blades are sharp and can cut.

3. Locate the four pilot holes shown in Fig. 1, Fig. 2 & Fig. 3. Enlarge the pilot holes using a .406" diameter drill bit.

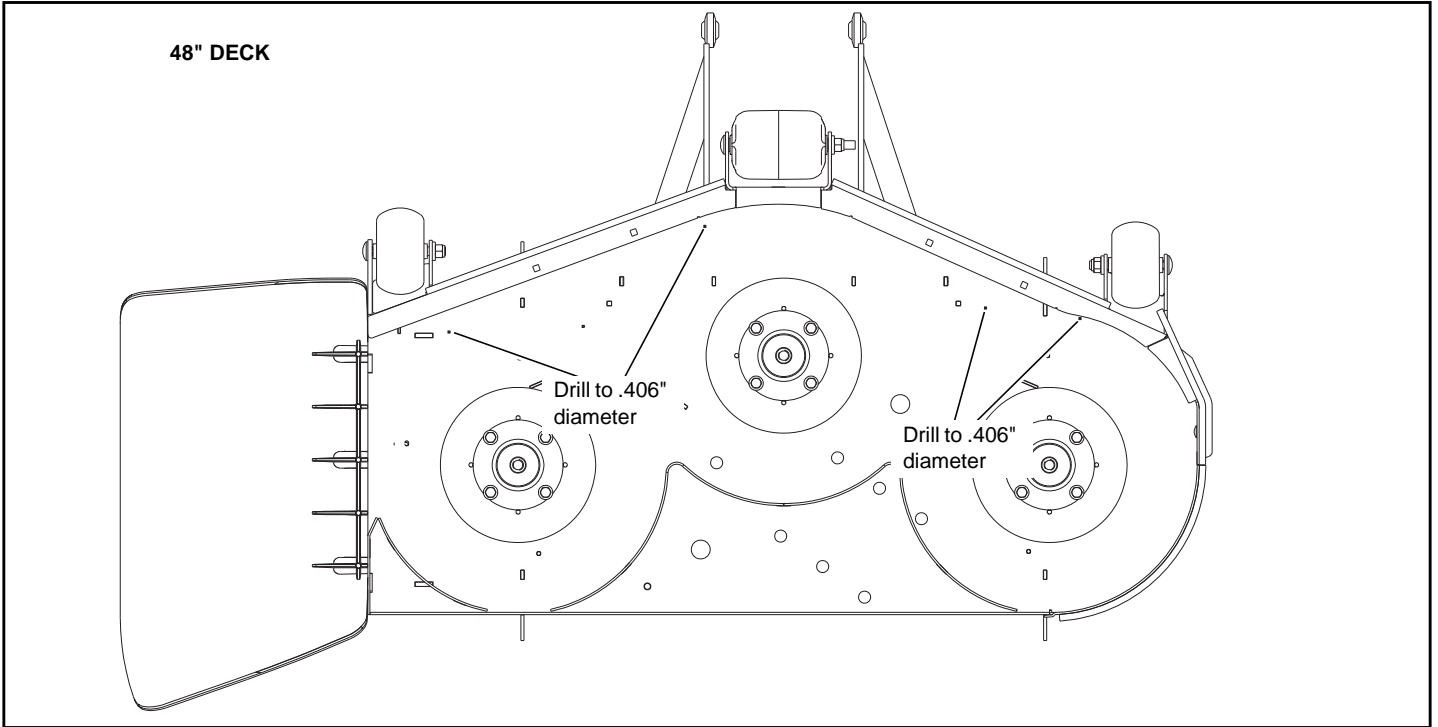


FIG. 1

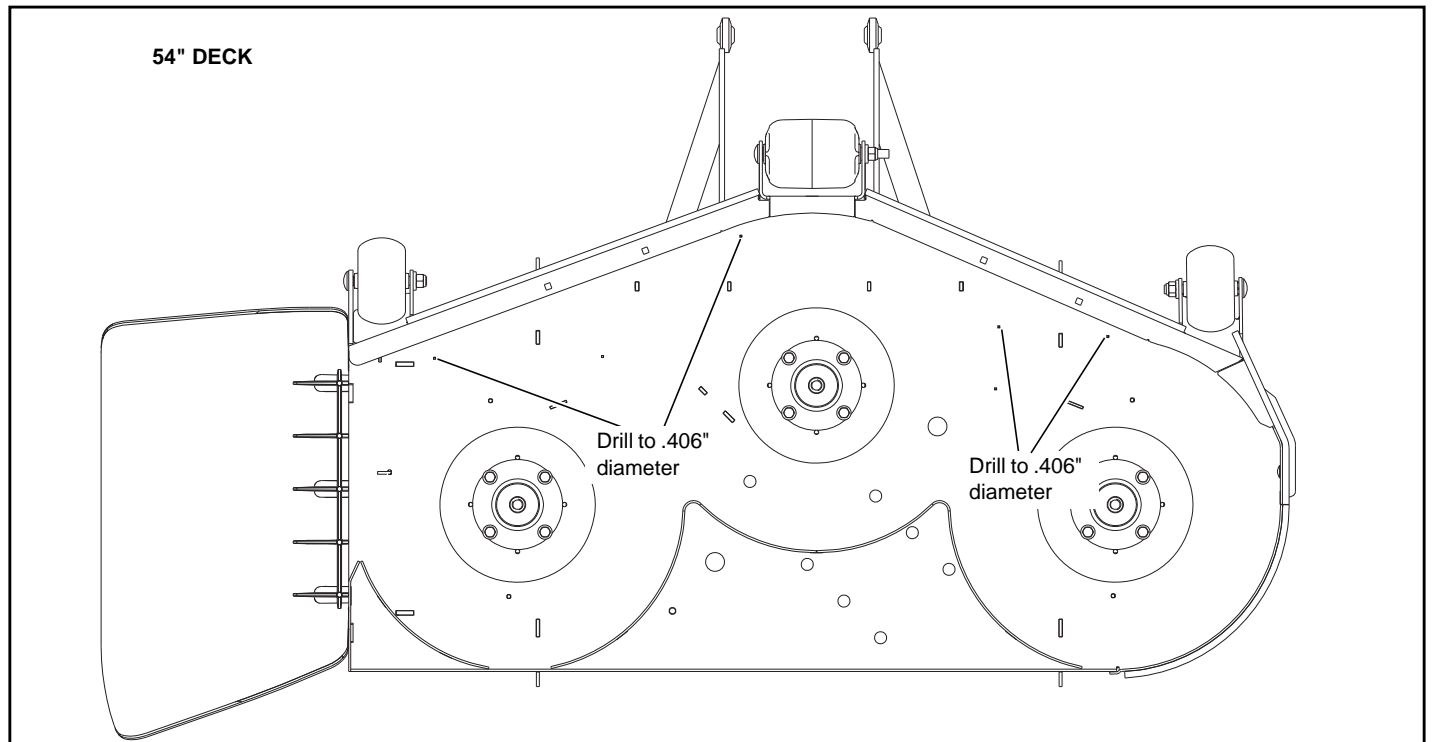


FIG. 2

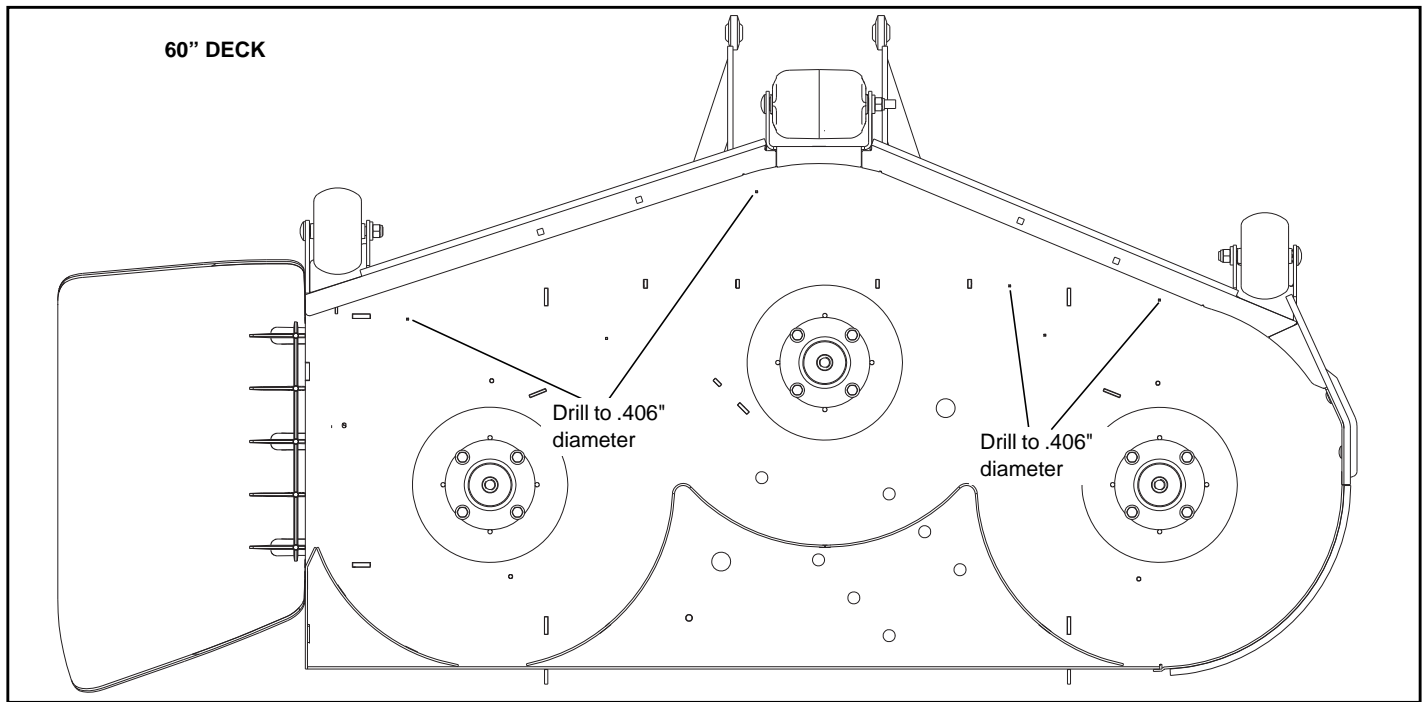
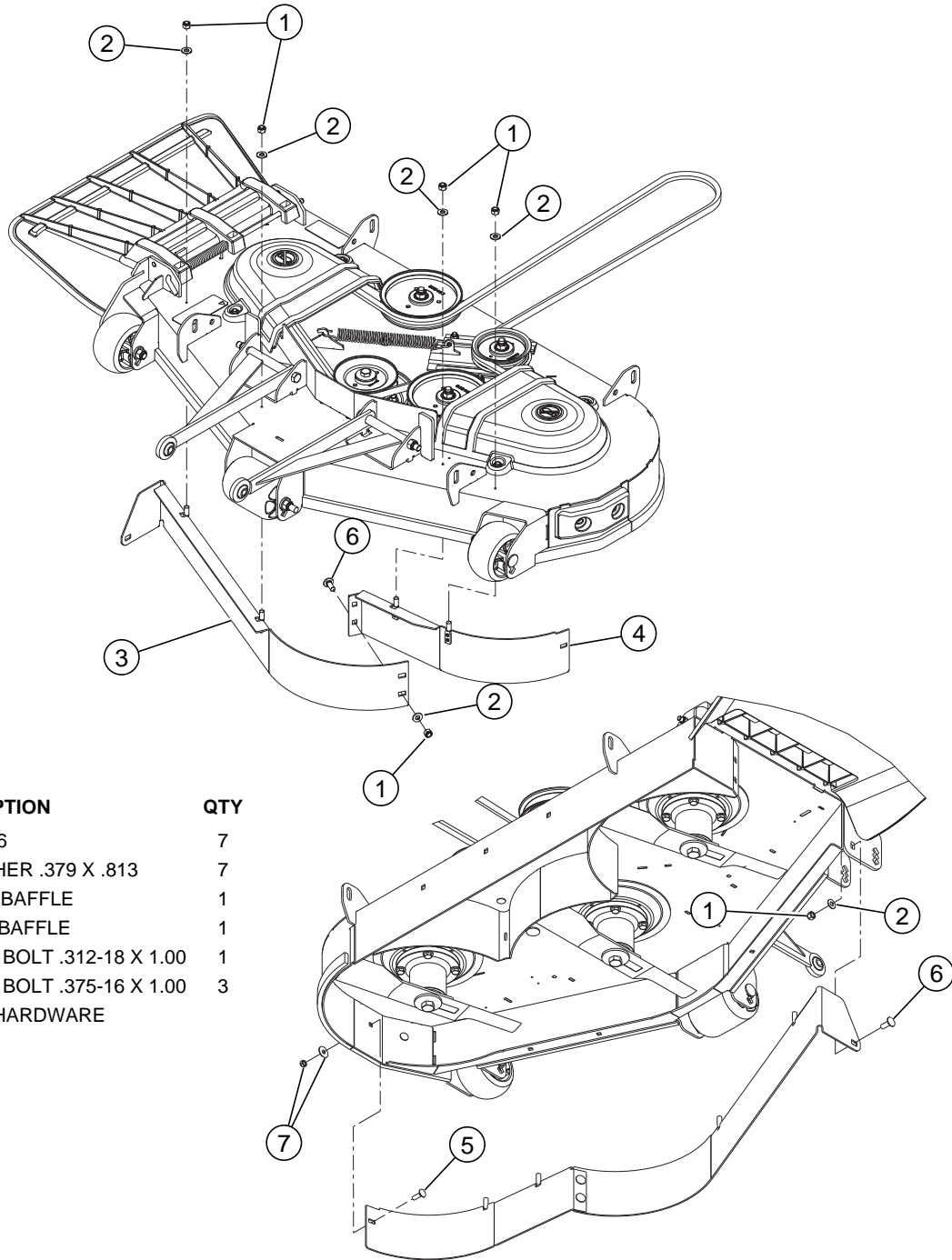


FIG. 3

4. Remove the rear bolt, nut, and flat washer from the left bumper. Fig. 4, Fig. 5 & Fig. 6
NOTE: Keep this hardware as it will be reused.
5. Attach the front left baffle to the top of the deck. Using the hardware shown, attach the baffle to the left bumper. Fig. 4, Fig. 5 & Fig. 6
6. Attach the front right baffle to the top of the deck as shown. Fig. 4, Fig. 5 & Fig. 6
7. Attach the two baffles together. Fig. 4, Fig. 5 & Fig. 6
8. Rotate the blades to make sure the they are not hitting the baffles.
9. Raise the front of the mower and remove the jack stands.
10. Lower the front of the mower and remove the wheel chocks.
11. Reconnect the negative battery cable.

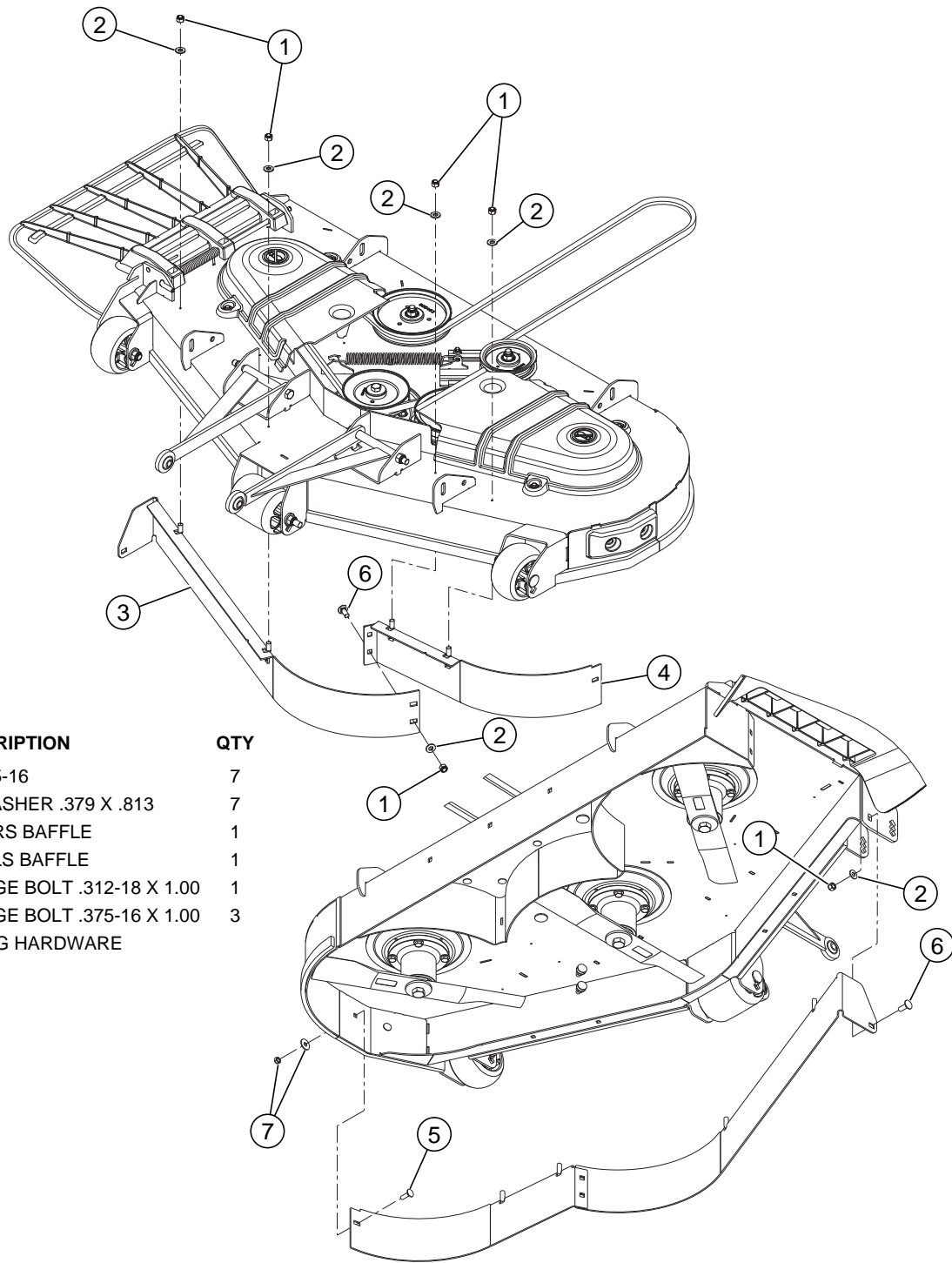
48" Deck



INDEX NO.	DESCRIPTION	QTY
1	NUT .375-16	7
2	FLAT WASHER .379 X .813	7
3	FRONT RS BAFFLE	1
4	FRONT LS BAFFLE	1
5	CARRIAGE BOLT .312-18 X 1.00	1
6	CARRIAGE BOLT .375-16 X 1.00	3
7	EXISTING HARDWARE	

FIG. 4

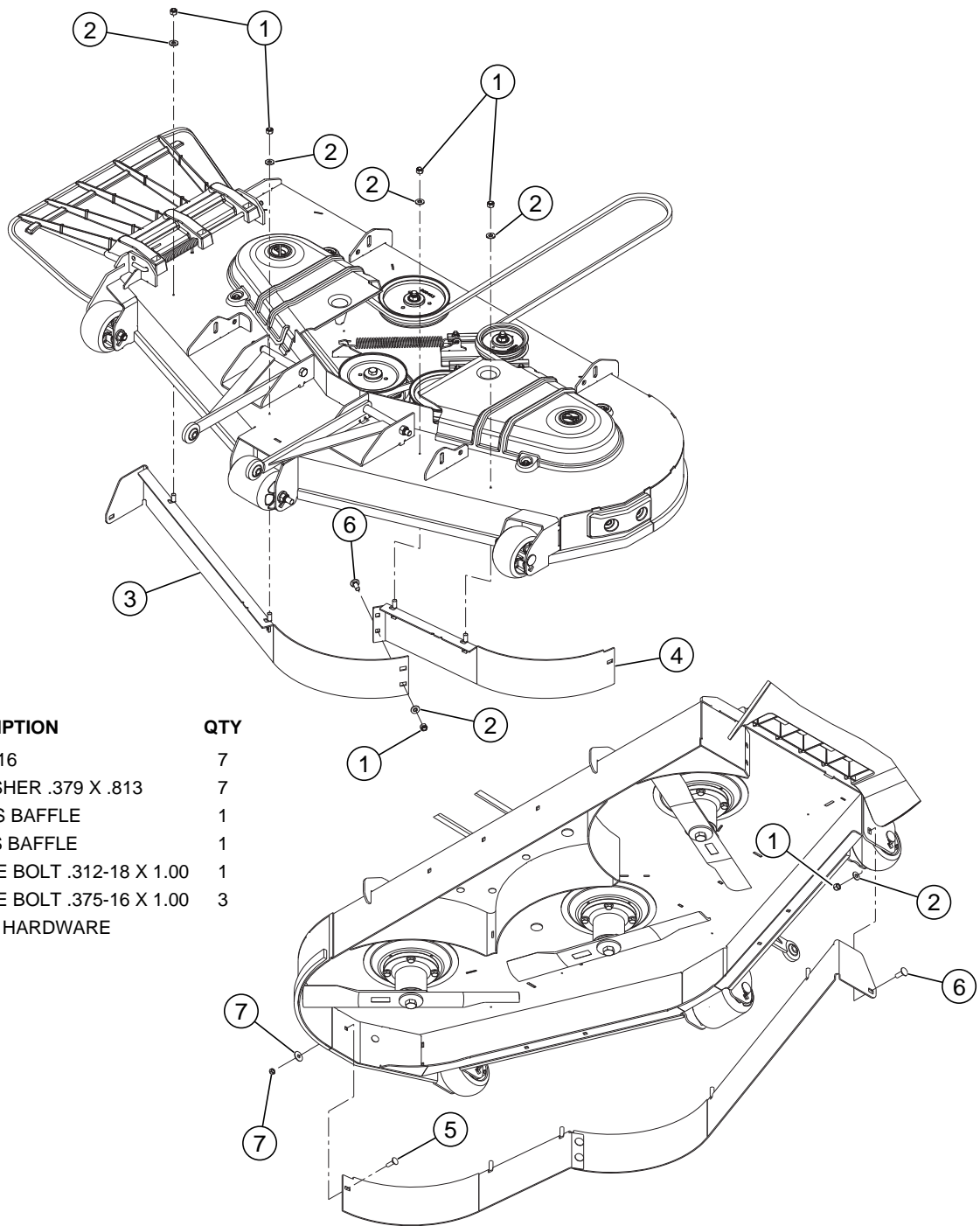
54" Deck



INDEX NO.	DESCRIPTION	QTY
1	NUT .375-16	7
2	FLAT WASHER .379 X .813	7
3	FRONT RS BAFFLE	1
4	FRONT LS BAFFLE	1
5	CARRIAGE BOLT .312-18 X 1.00	1
6	CARRIAGE BOLT .375-16 X 1.00	3
7	EXISTING HARDWARE	

FIG. 5

60" Deck



INDEX NO.	DESCRIPTION	QTY
1	NUT .375-16	7
2	FLAT WASHER .379 X .813	7
3	FRONT RS BAFFLE	1
4	FRONT LS BAFFLE	1
5	CARRIAGE BOLT .312-18 X 1.00	1
6	CARRIAGE BOLT .375-16 X 1.00	3
7	EXISTING HARDWARE	

FIG. 6

Removing the High Vacuum Kit

If you decide to remove the baffles, for any reason, then follow this procedure to remove the high vacuum kit.

1. Park the mower on a flat surface.
 - Place the deck clutch switch in the "OFF" (disengaged) position.
 - Place the steering control levers in the park brake position.
 - Shut off the engine and remove the key from the ignition switch.

- Disconnect the negative battery cable.
2. Raise the front of the mower and block it up high enough to allow the baffles to be removed from the underneath side of the deck. Chock the drive wheels to prevent the mower from moving.



WARNING



Use caution when working under the deck as mower blades are sharp and can cut.

3. Remove the baffles from the underneath side of the deck. Fig. 7
4. It will be necessary to plug the holes that are left open, in the top of the deck, when the baffles are removed. Use the .375-16 x .75 cap screws that are furnished with this kit and the existing flat washers and .375 nuts to plug these holes. Fig. 8

NOTE: Make sure the left bumper is re-attached.



WARNING



Close off the baffle mounting holes to prevent debris escaping from the underneath side of the deck.

5. **If the discharge chute was removed** – Assemble the torsion spring, the original discharge chute and pin to the deck. Make sure the torsion spring is assembled as shown so that it applies pressure to the discharge chute and keeps it in the down position. Fig. 9



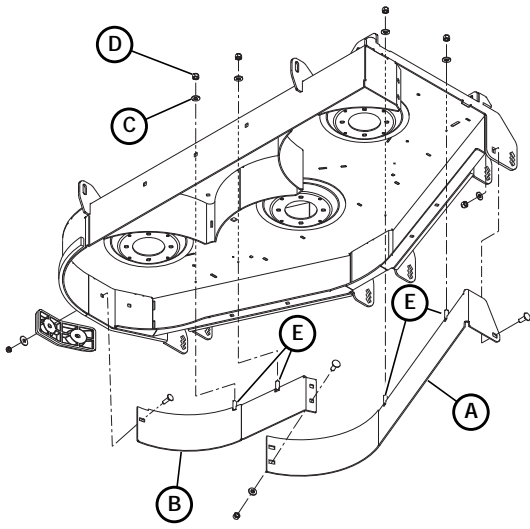
WARNING



Never operate the mower deck with the side deflector removed or in raised position except when the entire mulching system is being used.

6. Raise the front of the mower and remove the jack stands.
7. Lower the front of the mower and remove the wheel chocks.
8. Reconnect the negative battery cable.

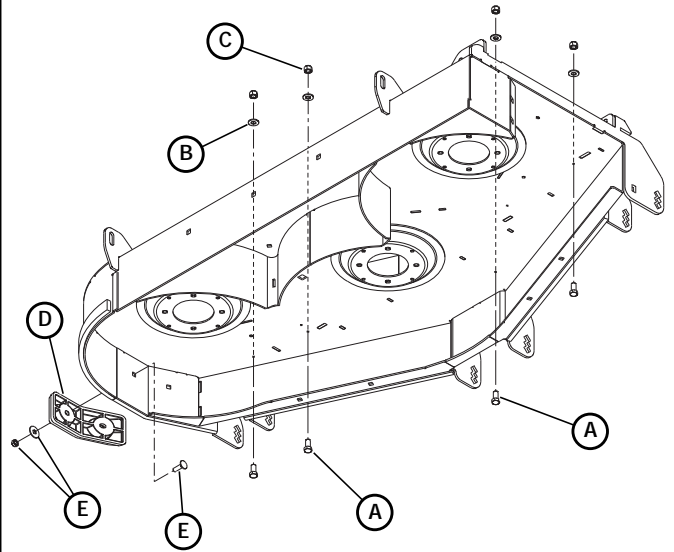
48" DECK SHOWN. BLADES REMOVED FOR CLARITY.
(54"/60" DECKS SIMILAR)



- | | |
|----------------------------|---|
| A. Front RS baffle | D. Nut .375-16 NL |
| B. Front LS baffle | E. Replace these studs with
.375-16 X .75 cap screws |
| C. Flat washer .379 X .813 | |

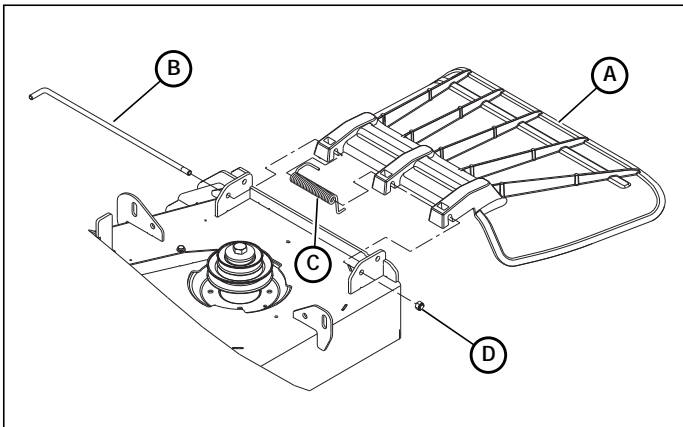
FIG. 7

48" DECK SHOWN. BLADES REMOVED FOR CLARITY.
(54"/60" DECKS SIMILAR)



- | | |
|----------------------------|---------------------------|
| A. Cap Screw .375-16 X .75 | D. Left bumper (existing) |
| B. Flat washer .379 X .813 | E. Existing hardware |
| C. Nut .375-16 NL | |

FIG. 8



- | | |
|--------------------|-------------------|
| A. Discharge chute | C. Torsion spring |
| B. Pin | D. Nut |

FIG. 9