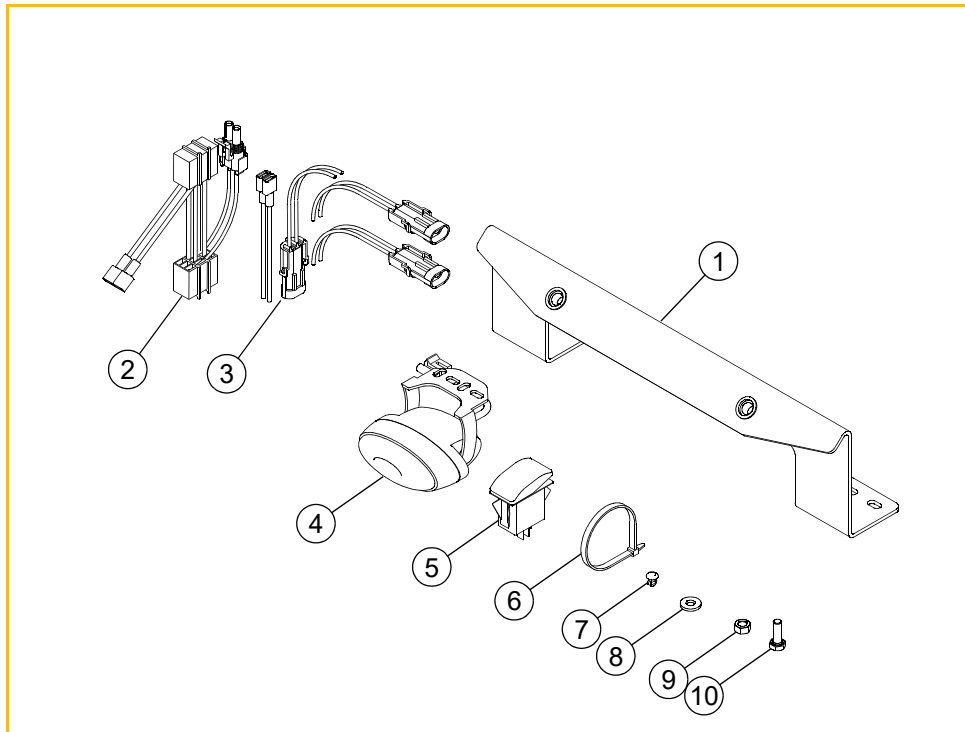


LIGHT KIT

PART NUMBER: 117682

PACKING LIST:

Listed below are parts included in this kit. If any parts are missing or damaged, please contact the Hustler® Parts Department. Retain these instructions for replacement parts.



INDEX NO.	PART NO.	DESCRIPTION	QTY.
1	551873	BRACKET	1
2	604506	KEY SWITCH PIGTAIL	1
3	601832	WIRE HARNESS	1
4	601831	12 VOLT OVAL LIGHT	2
5	601116	SWITCH	1
6	000331	WIRE TIE	6
7	604307	PUSH BUTTON MOUNT	3
8	768515	FW .281 X .625 X .051/.080H	8
9	024927	NT .250-20 HX G5 ZNYC	4
10	055939	CS .250-20 X .75 HX G5	4

Installing this light kit will require access to the mower's electrical system beneath the instrument panel and the battery area beneath the seat. The following tools are needed:

- 7/16" wrench
- 9/16" wrench
- Utility knife or other sharp knife (for cutting the instrument panel decal),
- Side cut pliers or equivalent (for trimming wire ties).



Use extreme caution if it becomes necessary to operate the unit, transporting or mowing, after dark or in low light situations. Only operate in open areas where there are no overhead obstructions; i.e. guide wires, tree branches, low overhangs, etc. Operate only in areas where the operator is thoroughly familiar with the terrain and any potential hazards. The lights are designed to illuminate forward and down and will not illuminate to the side or upward.

ASSEMBLY:

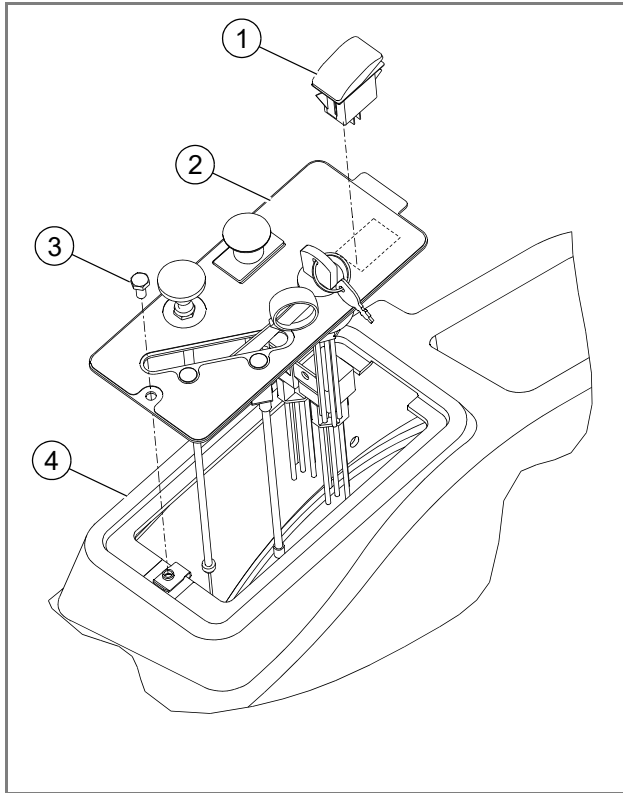
1. Park the mower on a solid, level surface; set the park brakes; shut-off the engine; and remove the ignition key.
2. Lift the seat and disconnect the negative battery cable.



Shorts caused by battery terminals or metal tools touching metal mower components can cause sparks. Sparks can cause a battery gas explosion which will result in personal injury.

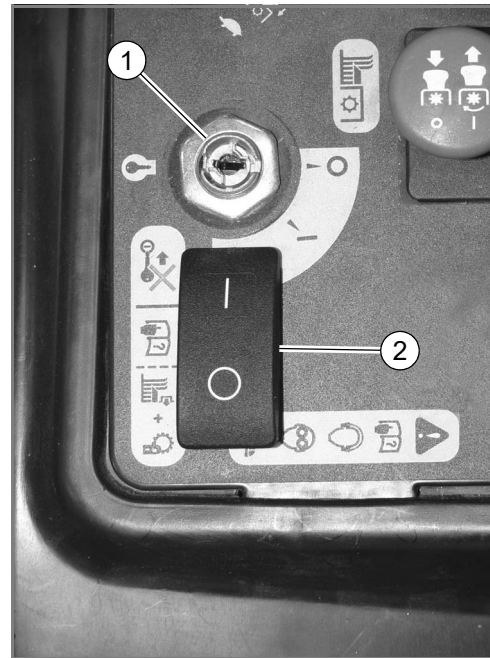
3. Access the wiring connections and the bottom of the instrument panel on the right side fender by removing the 1/4" bolt, lifting the front edge of the instrument panel, sliding it forward and lifting it far enough away from the fender to allow disconnecting the ignition switch. FIG. 1
4. Locate the rectangular opening to the rear of the ignition switch in the instrument panel. Using the panel as a guide, cut a rectangular hole in the instrument panel decal for the switch. FIG. 1

5. Insert the switch into the rectangular cut-out oriented as shown in FIG. 2. It will snap into place.



INDEX NO.	DESCRIPTION
1	SWITCH
2	INSTRUMENT PANEL
3	1/4" BOLT
4	RIGHT FENDER

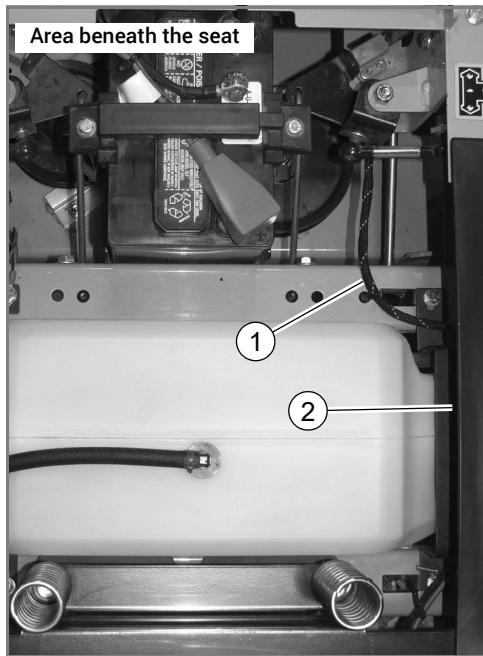
FIG. 1



INDEX NO.	DESCRIPTION
1	IGNITION SWITCH
2	SWITCH

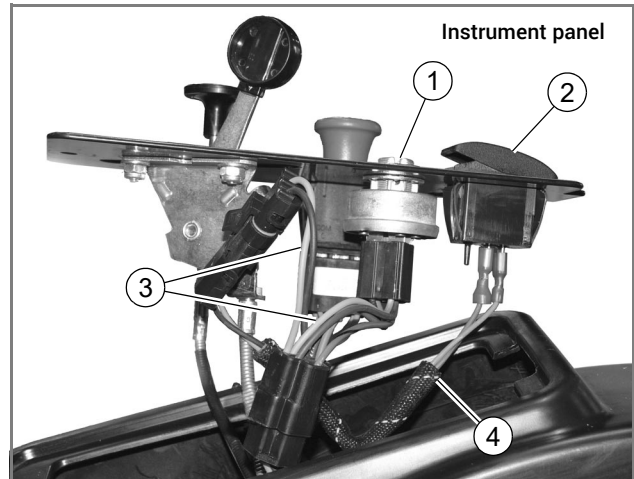
FIG. 2

6. Route the new wire harness from the inside area beneath the seat through the opening in the bottom of the right fender into the instrument panel opening. FIG. 3
7. Connect the pigtail harness to the ignition switch and to the mower's wire harness. FIG. 4
8. Connect the weather pack connector on the wire harness to the weather pack connector on the pigtail harness and the female blade terminals on the wire harness to the switch (polarity is not critical). FIG. 4



INDEX NO.	DESCRIPTION
1	WIRE HARNESS
2	RIGHT FENDER

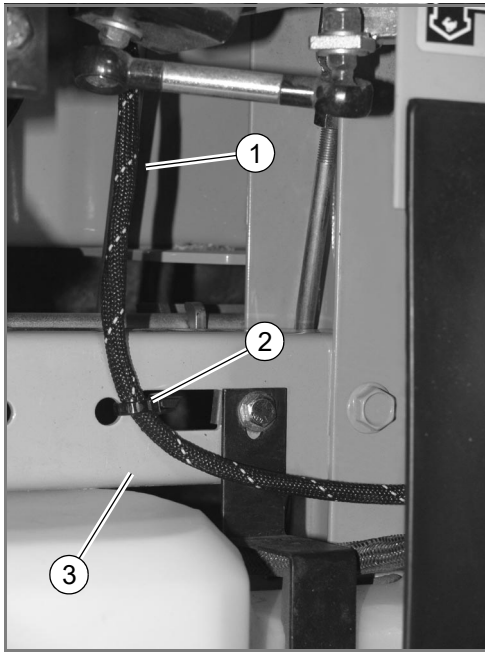
FIG. 3



INDEX NO.	DESCRIPTION
1	IGNITION SWITCH
2	SWITCH
3	PIGTAIL
4	WIRE HARNESS

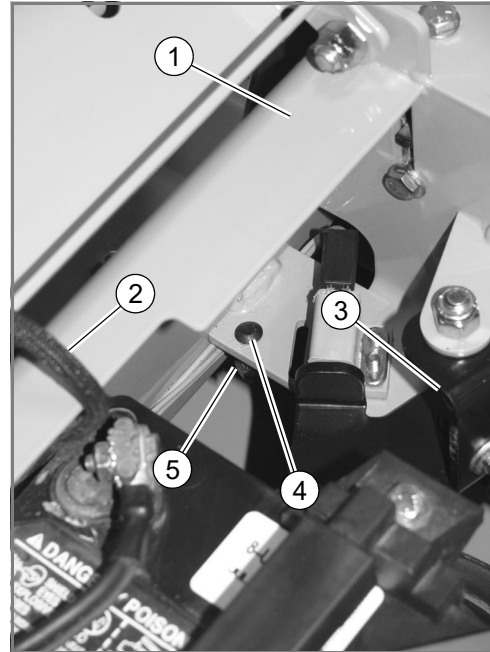
FIG. 4

- 9. Reinstall the instrument panel reversing the procedure in step 3.
- 10. Secure the harness to the mower frame cross member and to the brake bell crank mount, using wire ties. Leave the wire ties loose. FIG. 5 & FIG. 6



INDEX NO.	DESCRIPTION
1	WIRE HARNESS
2	WIRE TIE
3	FRAME CROSSMEMBER

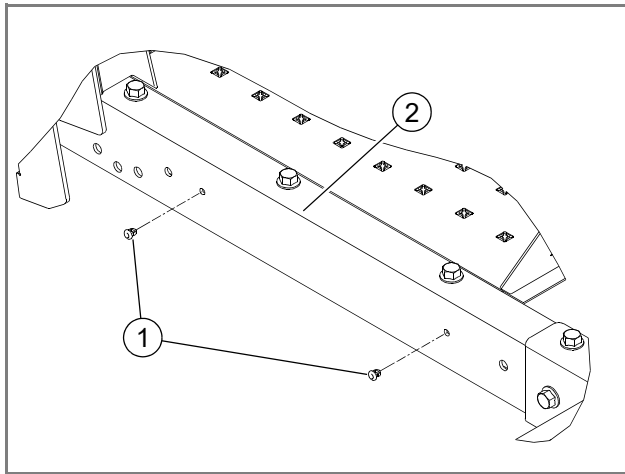
FIG. 5



INDEX NO.	DESCRIPTION
1	FRONT SEAT SUPPORT
2	WIRE HARNESS
3	BRAKE BELLCRANK
4	PUSH BUTTON MOUNT
5	WIRE TIE

FIG. 6

- 11. Install the push button mounts in the right side frame rail of the mower. FIG. 7
If the mower does not have holes for these, they must be added. Use a .25 diameter drill bit and locate the holes as shown in FIG. 8.



INDEX NO.	DESCRIPTION
1	PUSH BUTTON MOUNT
2	RIGHT SIDE FRAME RAIL

FIG. 7

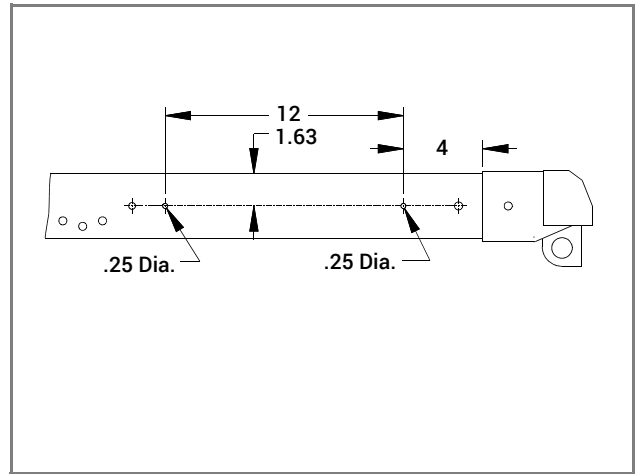
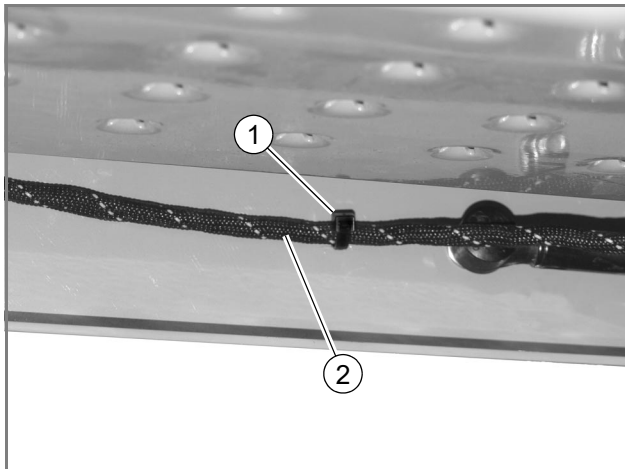


FIG. 8

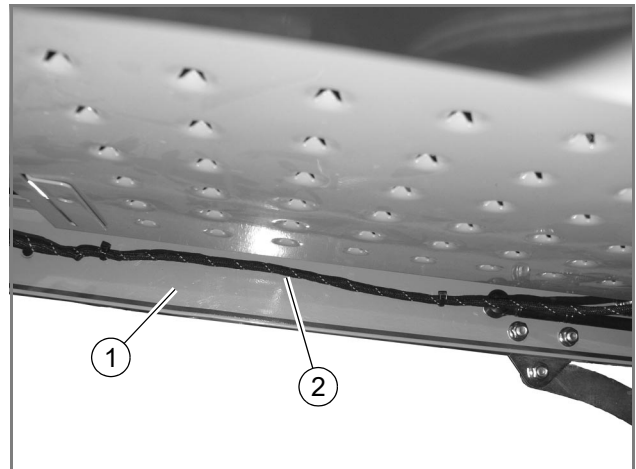
12. Route the wire harness along the inside of the frame rail to the front of the mower.
FIG. 9 & FIG. 10

13. Secure the wire harness to the push button mounts, using wire ties. Leave the wire ties loose. FIG. 9 & FIG. 11



INDEX NO.	DESCRIPTION
1	WIRE THIE THROUGH THE PUSH BUTTON
2	WIRE HARNESS

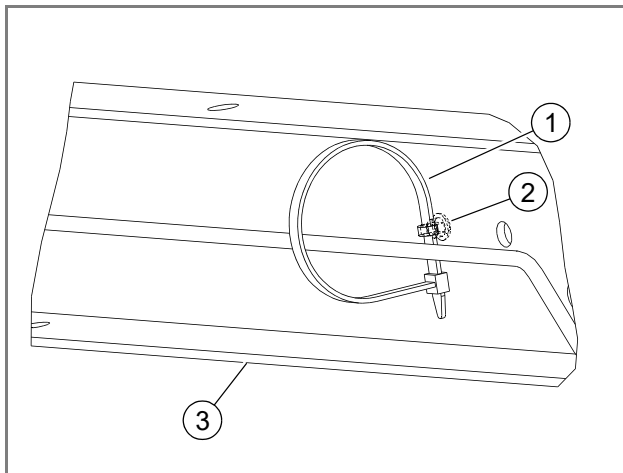
FIG. 9



INDEX NO.	DESCRIPTION
1	FRAME RAIL
2	WIRE HARNESS

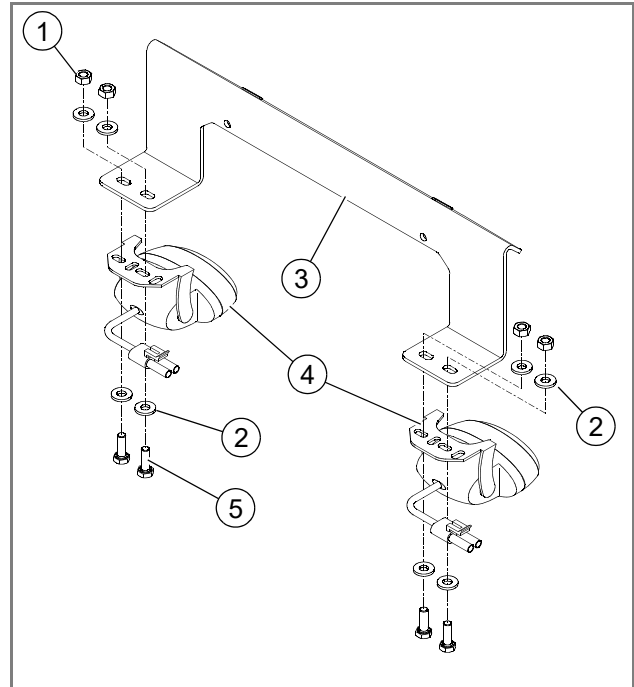
FIG. 10

14. Assemble the oval lights to the bracket using the .250" bolts, washers and nuts supplied, as shown. FIG. 12



INDEX NO.	DESCRIPTION
1	WIRE TIE THROUGH THE PUSH BUTTON
2	PUSH BUTTON MOUNT
3	FRAME RAIL

FIG. 11

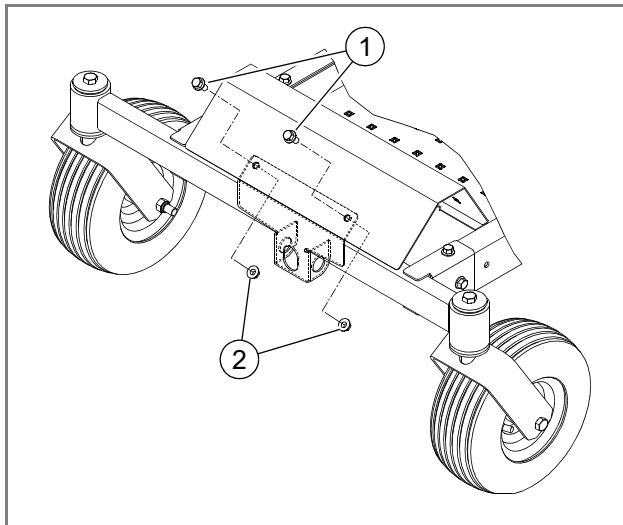


INDEX NO.	DESCRIPTION
1	NT .250-20
2	FW .281 X .625
3	BRACKET
4	OVAL LIGHTS
5	CS .250-20 X .75

FIG. 12

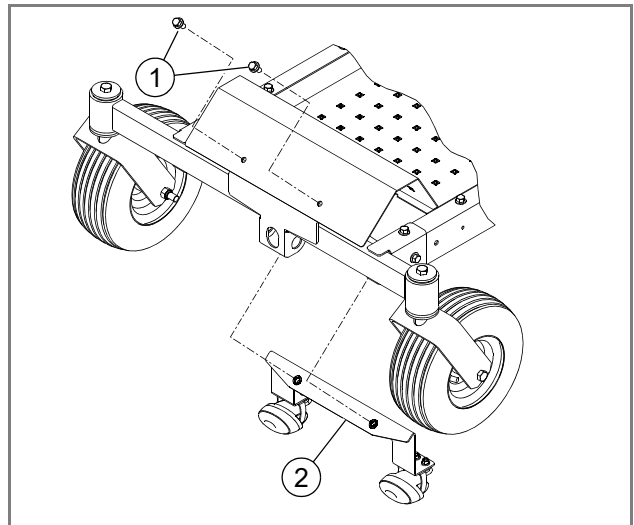
15. Remove the 3/8" nuts and bolts from the front of the mower. Retain the bolts and discard the nuts. FIG. 13

16. Assemble the bracket with lights to the mower using the 3/8" bolts from the previous step. FIG. 14



INDEX NO.	DESCRIPTION
1	EXISTING HARDWARE
2	DISCARD THIS HARDWARE

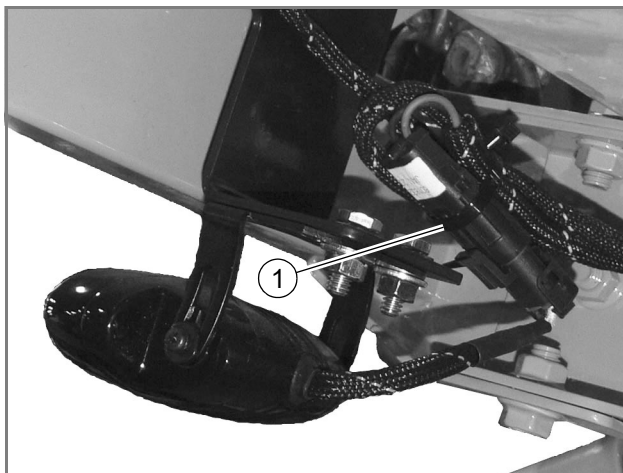
FIG. 13



INDEX NO.	DESCRIPTION
1	EXISTING HARDWARE
2	BRACKET WITH LIGHTS

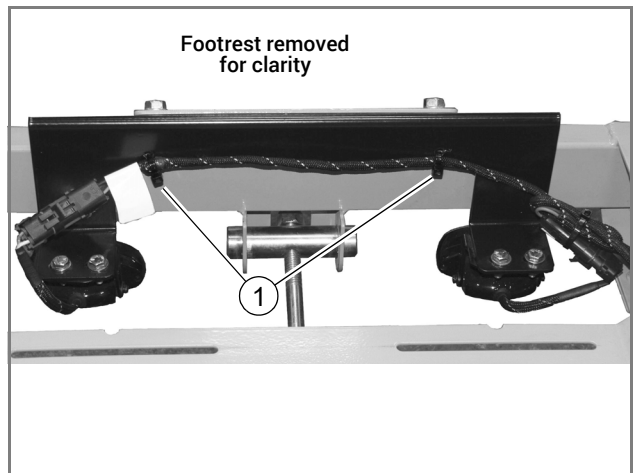
FIG. 14

17. Connect the wire harness to the lights. Secure the wire harness to the bracket with wire ties. FIG. 15 & FIG. 16
 Coil and tie the extra length of wire harness together. FIG. 15



INDEX NO.	DESCRIPTION
1	WIRE TIE

FIG. 15



INDEX NO.	DESCRIPTION
1	WIRE TIES

FIG. 16

- 18.** Check the wire harness to make sure it does not come into contact with any moving parts.
- 19.** Check the wire harness routing, pull the wire ties tight and cut off excess wire ties.
- 20.** Reconnect the negative battery cable and return the seat to the operating position.