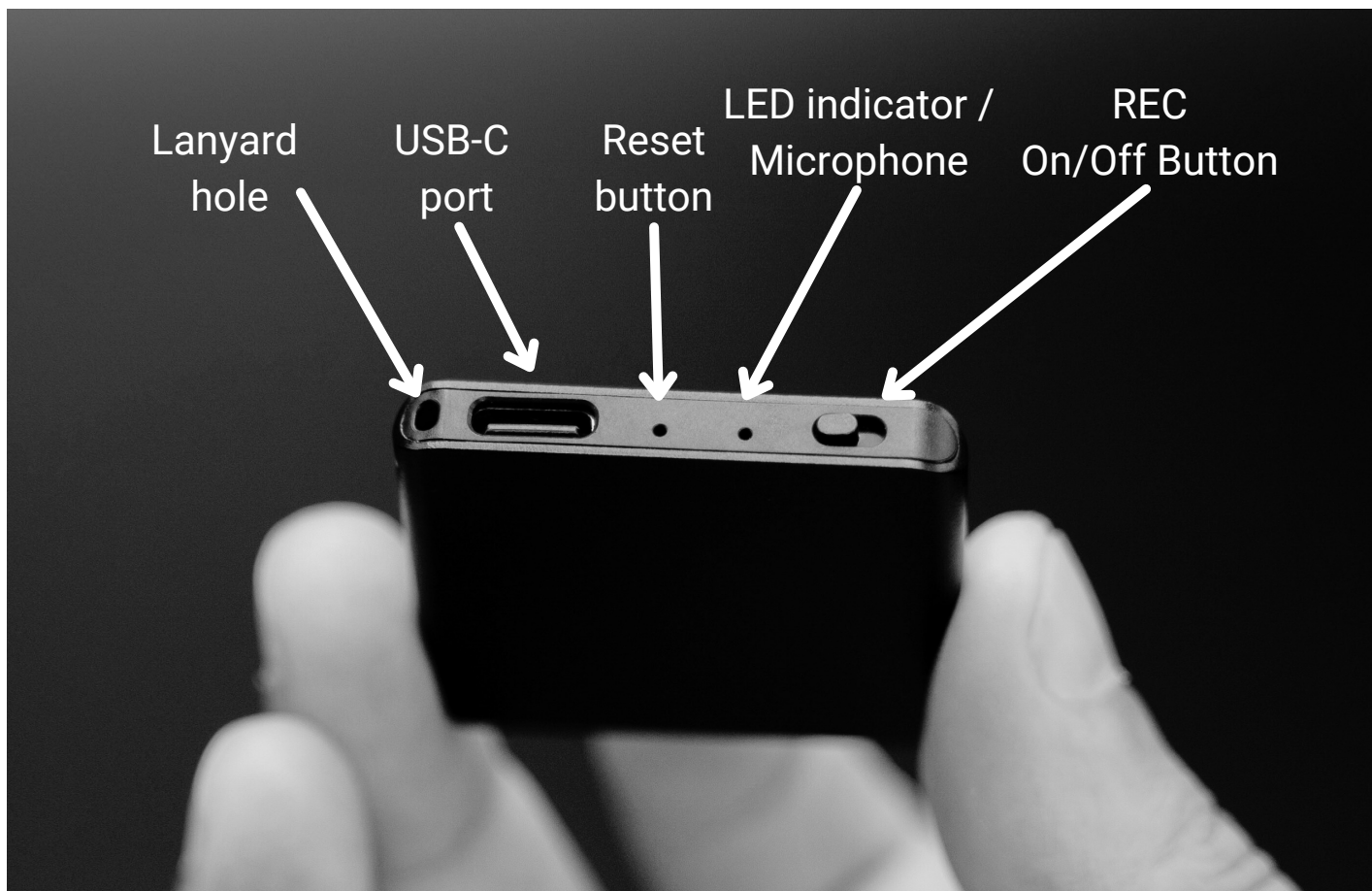


Appearance and Buttons



Disclaimer

Atto Digital cannot be held responsible for any use of the TileRec VoiceRecorder without the necessary permission(s) needed for recording. The user is directly responsible for researching and obeying the applicable laws.

Please check the local laws applicable in your area. Regardless of whether state or federal law governs the situation, it is almost always illegal to record a phone call or private conversation to which you are not a party, do not have consent from at least one party, and could not naturally overhear. ATTO Digital can't be held liable for any loss or damage of whatever nature (direct, indirect, consequential, or other) which may arise as a result of a person's use of (or inability to use) our products.

What is in the box

Before diving into the user manual or connecting any components, it's a good idea to confirm that all of the following items are included:"

TileRec Mini Recorder (64 GB)

USB-C Cable

USB-C Connector

USB-C Custom-designed earphones, equipped with controls for playback and other audio adjustments.



A comprehensive **guide** to help you set up and make the most out of your TileRec . Follow this for initial setup, best practices, and troubleshooting tips.

Two convenient lanyards are included for easy portability. Attach these to the lanyard hole on your TileRec to carry it around your neck or secure it to other objects.

Please check to ensure that all these components are included in your box. If any of the items are missing or damaged, contact customer support immediately. Once you've confirmed that all the components are there, you can move on to setting up your new TileRec Mini Voice Recorder.

How to RECORD

Start Voice Recording

- Locate the REC Button (●) on your TileRec.
- Slide the REC button to the ON position.
- The light indicator will switch from **RED** to **BLUE**, confirming the device is recording.
- The LED will flash 10 times to confirm that the microphone is initiating. The it can remain lit or switch off (depending on your chosen setting option)



ON



OFF

Stop Voice Recording

- Slide the REC Button to the OFF position.
- The audio file will be saved automatically.

Setting up the recorder

A. Setting Time Stamp

1. Connect the recorder to a PC via the USB-C cable provided in the box.

**If the computer has a USB port, connect the cable directly to it. If the computer has a USB-C port, use the USB-C adapter in the box to connect the cable.*

2. Open the folder RECORD that you will find in the partition of the device. This will be visible in My PC (for Windows users) or under Devices (for MacOS users).

3. Access the text file in the folder. The text file is called RECSET. This file is generated automatically and you just need to adjust it as needed.

4. Write the current date and time in the format `yyyymmddhhmmss`, as follows:

yyyy – four digits format for year (ex. 2023), **mm** - is 2 digits for month (ex. for September is 09),

dd - 2 digits day (ex. if today is the 3rd day of the month - you must write 03).

hh - means 2 digits hour format (ex. for 5PM you must write 17, for 6AM is 06, etc).

mm - is 2 digits format for minutes and **ss** - is 2 digits format for seconds.

Please make sure there are no spaces before or after the string of digits depicting your timestamp.

If for example, you would setup the device on the 1st of October 2023, at 11:30 PM, then the correct timestamp you would write in the 1st line of the text format is:

20231001233000

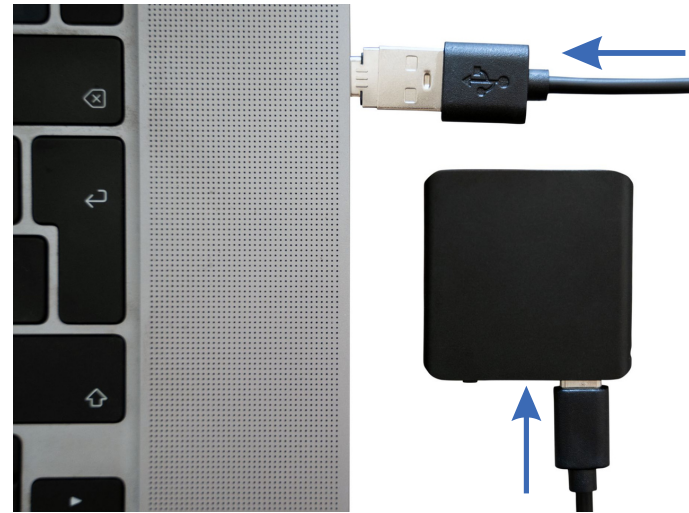
B. Setting Recording Mode

In the second line of the RECSET file:

1. **Write 1** for voice-activated recording.

2. **Write 0** for continuous recording.

Keep in mind that voice activated mode means that the device will be turned ON manually but during silent periods the microphone will pause. It reinitiates again when sounds over 45dB are in the mic's range.



When VOS is turned on, the LED lights will flash, and when in continuous recording mode, the LED lights will remain on. The above is when the LED light is set to on.

C. Setting LED

In the third line of the **RECSET** file:

- Write 1 if you want the LED to flash during recording.
- Write 0 if you prefer no LED flash during recording.

Keep in mind that when you turn the device ON the LED will flash 10 times to signal the microphone initiating, regardless of the setting. After the 10 flashes, the LED will act according to your input.

D. Timed Sectioning for Audio Files

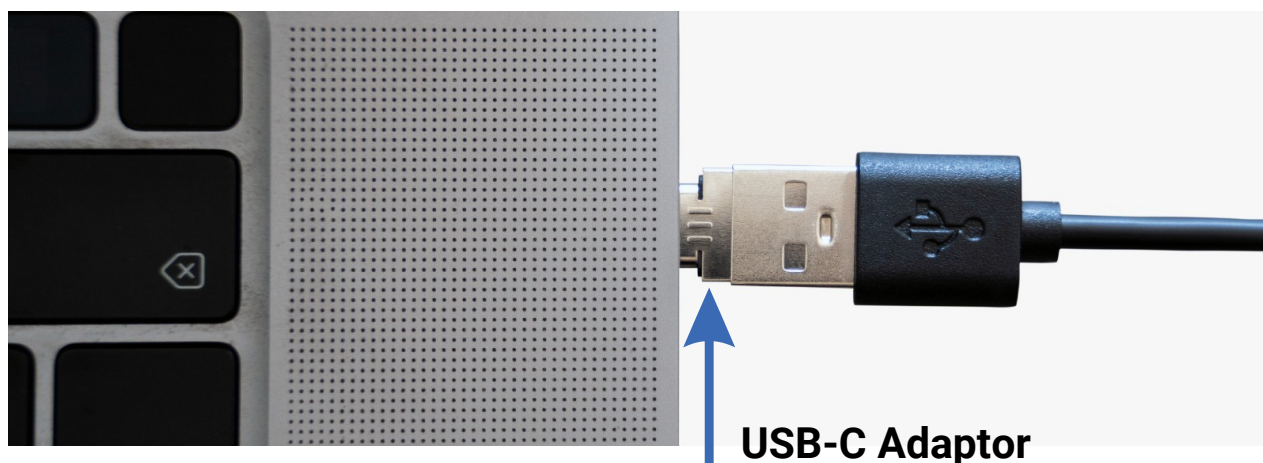
In the fourth line of the RECSET file the value of your preferred length for an audio file. For example, if you'd like to have 30-minute files, you will need to input 30 in the 4th line of the text file.

Sectioning audio will allow easier shuffling through information while on the go.

Connect TileRec to a PC

A. Connect to a computer with USB port

1. Make sure your TileRec device is turned off. Slide the REC button to the "OFF" position to ensure the device is off and to make sure that any ongoing recordings are properly saved.
2. Make sure your PC is turned on and awake. Unlock the system if it's locked.
3. Insert the USB termination of the cable that came with your TileRec device into the USB port on your PC.
4. Connect the USB-C end of the cable to the USB-C port on your TileRec Mini Voice Recorder.
5. To access the recordings, open "My PC" (for Windows) or "Devices" (for macOS).
6. You should see the TileRec device appear as a new drive. Double-click on it to access its contents. In the folder **RECORD** you will find all your recorded audio files.



B. Connect to a computer with USB-C port

1. Make sure your TileRec device is turned off. Slide the REC button to the "OFF" position to ensure the device is off and to make sure that any ongoing recordings are properly saved.
2. Make sure your PC is turned on and awake. Unlock the system if it's locked.
3. Insert the USB-C adaptor to the USB termination of the cable that came with your TileRec device and then connect it to the USB-C port on your PC.
4. Follow the same steps as per above.

C. Connect to an Android phone

1. Make sure your Android phone is unlocked and on the home screen.
2. Insert the USB-C connector into your Android phone's charging port.
3. Plug the USB port of the cable that came with your TileRec device USB-C adaptor.
4. Attach the other end of the USB cable into the USB port on your TileRec Mini Voice Recorder.
5. Wait a few moments for your Android phone to recognize the TileRec device. A notification should appear indicating that a USB device is connected.
6. In the file manager, look for a new drive that represents the TileRec device. This may be listed as 'USB Storage' or similar. Tap on the new drive to open it, and locate the folder named 'RECORD'.



Charging the TileRec

If the **RED LED** is continuously flashing, this indicates that your device's battery is running low and it's time to recharge.

You can recharge the TileRec device by connecting it to the USB port on your PC, laptop, or using a wall charger.

- **PC or Laptop:** Make sure your computer is turned on and awake, so it can supply power to the device.
- **Wall Charger:** Ensure the wall charger is compatible and provides a stable source of electricity.

You'll know the device is fully charged when the red light indicator stops flashing and remains steadily lit. Allow approximately **1.5 hours** for a full charge, that will ensure up to 30 hours of battery life.

Understanding LED signals

- **Blue LED:** Device is recording.
- **Green LED:** If the device's storage is full, the green LED indicator will flash rapidly for 10 seconds before the device automatically shuts off. Rest assured, the audio file being recorded will be automatically saved before the device turns off. You will need to free up some storage space on the recorder. You can do this by either deleting older or unnecessary files, or transferring them to a different folder on your computer.
- **Red LED:** Battery is low, needs charging. Rest assured, the audio file being recorded will be automatically saved before the device turns off.

Playback recorded audio

1. Playing Back Recordings on Your Computer

Connect the TileRec device to your computer using the provided USB-C cable. Insert the USB-C end into the TileRec and the other end into an available USB port on your computer.

- **For Windows:** Open 'My Computer' or 'This PC' and locate the new drive that represents the TileRec device.
- **For Mac:** Open 'Finder' and look for the TileRec device under the 'Devices' section.

Navigate to the folder labeled 'RECORD' within the TileRec device storage. This folder contains all your audio recordings. Double-click on the audio file you wish to play. Your computer's default audio player should open and start playing the MP3 file.

2. Playing Back Recordings on Your Android phone

Connect the TileRec device to your Android phone using the provided USB-C cable. A notification may pop up on your Android device asking for permission to access the TileRec. **Grant permission.**

Open your file manager app and navigate to the 'RECORD' folder on the TileRec device storage. Tap on the audio file you want to play. It should open in your phone's default audio player and start playing.

3. Playing Back Recordings using Headphones

Insert the USB-C connector of your earphones into the USB-C port on the TileRec Mini Voice Recorder.

Slide the power button to the ON position on the TileRec device in order to be able to playback your audio files.



Use the Headphone Controls

- **Volume** : Short press the earphones controls “-” and “+” to adjust the volume when playing back your recordings.
- **Fast Forward**: Keep “+” sign long-pressed to skip to the next audio file.
- **Backward**: Keep “-” sign long-pressed to skip to the previous audio file.
- **Mute**: Long press the microphone icon to mute the audio.

Troubleshooting tips

If you suspect your recorder isn't functioning as it should, don't immediately assume it's defective. Here are some troubleshooting steps to consider:

1. Device Not Detected by Computer

If you connect the TileRec to your computer and can't see its storage partition, make sure the recorder is turned off before initiating the connection and that you are using a working USB cord that allows data transfer.

2. Charging Issues

If the recorder doesn't seem to charge, try using an alternative USB cable that also supports data transfer. Occasionally, your computer may enter standby mode, which can prevent the device from charging. Ensure your computer is active and the USB port is configured to allow charging.

3. Storage Full Indicator

If your recorder doesn't appear to record and the green indicator light is flashing rapidly, it's likely that the device storage is full. Delete unnecessary files to free up space or format in NTFS and then try recording again.

4. Unresponsive Device

If your device becomes unresponsive during operation, use a pin or needle to press the reset button for 10 seconds. This should restore normal functionality to your recorder.

Important: Always use the "Safely Remove Hardware" option on Windows or the "Eject" option on macOS when disconnecting the recorder from your computer to preserve its integrity.

Care Guidelines

Storage Conditions

Do not store or place the recorder in areas with high temperatures, damp conditions, or excessive dust.

Backup Your Data

Regularly backup your files to another storage device, like your computer, to prevent data loss due to malfunctions or incorrect operations.

Self-Repair

Do not attempt to disassemble the recorder or replace any internal components yourself. If you need to send the device for repair, back up your data beforehand as we are not responsible for data loss during maintenance.

Battery Guidelines

Check local laws and guidelines for proper battery disposal. Store the battery at room temperature and aim to keep it charged at least to 30%.

Charger Recommendations

Avoid using high-power chargers, such as smartphone fast-chargers, as they may reduce the lifespan of your battery.

Periodic Charging

Even if you don't use the device regularly, it is recommended to charge the battery at least once every 6 months to prevent over-discharge.

By following these troubleshooting tips and care guidelines, you can extend the life of your TileRec voice recorder and maintain its optimal performance.

Technical Specification

Dimensions: 1.6" x 1.6"x 0.25 "

Device Weight: 0.5 oz

Battery Type: 3.7V 240mAh Polymer Battery

Battery Life: 30 Hours

Supported Audio Format: MP3 at 128 Kbps

Available Recording Durations:

32 GB: Approximately 575hours

64 GB: Approximately 1150 hours

Compatible Operating Systems: Windows macOs, Linux, and Android

Internal Storage: Formatted as NTFS

For further issues, you can reach out to us at the following:

Email: support@atto-digital.com

Website Support: atto-digital.com/support

Live Chat: www.atto-digital.com