

ATTO DIGITAL

Voice Activated Recorder

The Sam08 - User manual

Appearance and Buttons

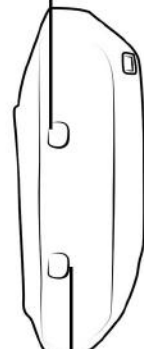
MICRO USB



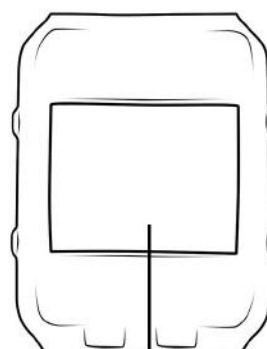
UP ARROW BUTTON



MODE BUTTON



DOWN ARROW BUTTON



SCREEN

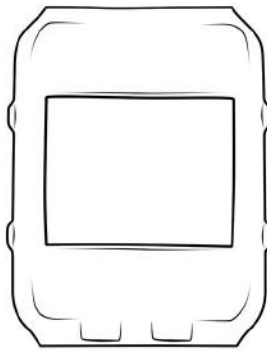
POWER BUTTON

NOTE: You just purchased the SAM Mini Module by aTTo - the smallest digital voice recorder on the market. The module is protected by a thermo tube casing that must not be removed from the device.

DISCLAIMER: aTTo digital cannot be held responsible for any use of the SAM08 Voice Recorder without the necessary permission(s) needed for recording. The user is directly responsible for researching and obeying the applicable laws. Please check the local laws applicable in your area. Regardless of whether state or federal law governs the situation, it is almost always illegal to record a phone call or private conversation to which you are not a party, do not have consent from at least one party, and could not naturally overhear.

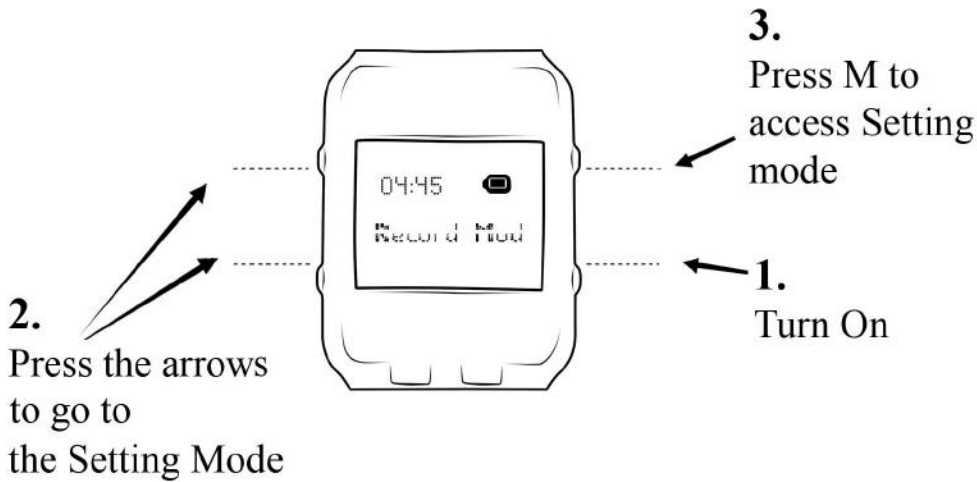
aTTo digital can't be held liable for any loss or damage of whatever nature (direct, indirect, consequential, or other) which may arise as a result of a person's use of (or inability to use) our products.

How to turn ON/OFF



Press and hold for 2 seconds to turn ON/OFF

How to set Time and Date



Press the arrows to navigate through the menu, press M button to access the SYSTEM TIME option



Press the arrows to navigate through the numbers



Press the M button to select DD/MM/YY HH:MM:SS. Press M button to save and validate each number; short press (less than a second) the ON/OFF button after setting the seconds to save the date and time

VOR / VOS SETTING

This setting allows you to enable/disable voice activation.

NOTE: The *DEFAULT* factory setting is voice-activated recording mode (VOR level 2).

TIP: The higher the VOR level, the less sensitive the microphone is, so it is highly recommended to not set a value higher than 2.



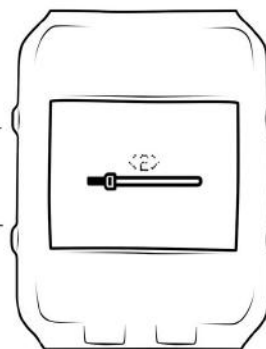
From setting mode, press 'M'

Press the arrow to navigate through the menu



Press M button to access the VOR level option

Press the arrow to choose to increase/decrease the value



Press M button to save your VOR setting

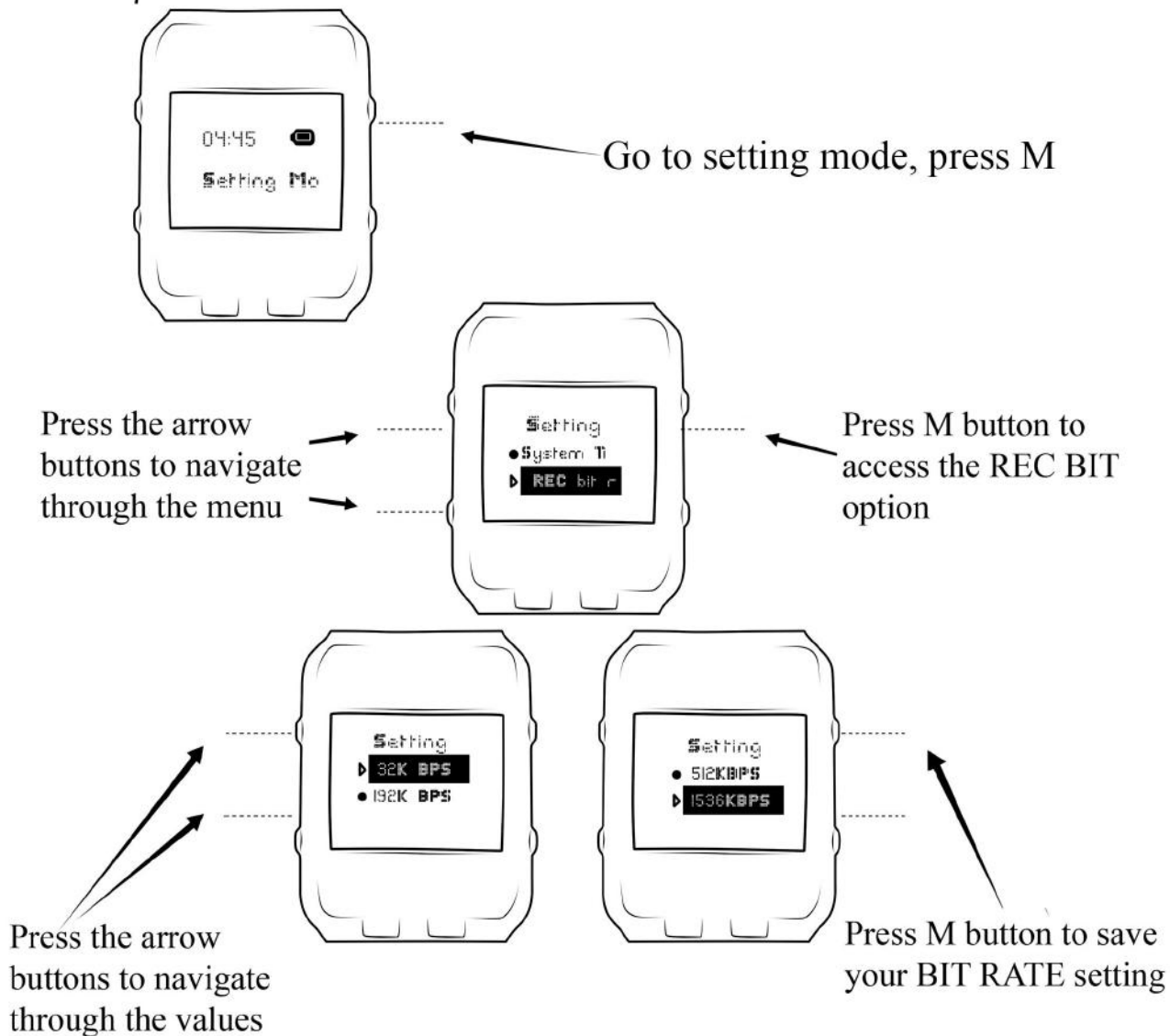
- * 0 means that VOR is deactivated and the device will record continuously
- * 1-10 - VOR is active (Voice activated recordings)
- * 1 – the most sensitive level of sound detection
- * 10 – the less sensitive level of sound detection
- * Recommended VOR level on Voice Activation Mode: 1-2

REC BIT

NOTE: The default factory settings is voice-activated recording mode at 192 Kbps quality level, ensuring 18 hours of continuous recording.

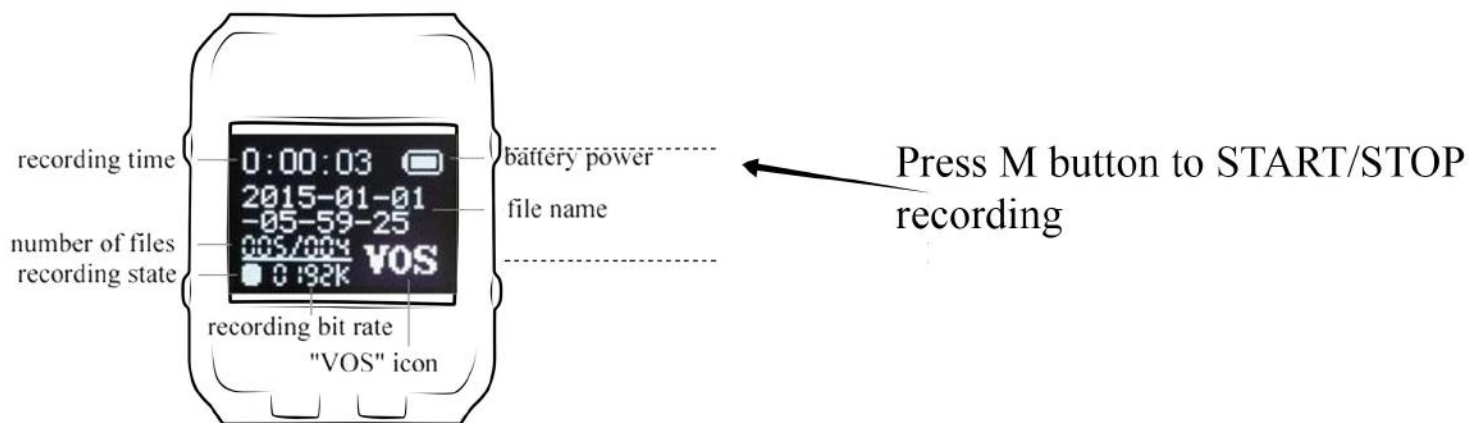
WARNING: Do NOT change this setting unless necessary as it can change how your recorder operates. If you need help please contact us at attodigitalusa@gmail.com. Please see below specifications:

Bit Rate	Battery Life	Memory Capacity for 8Gb model:
32 kbps	21 hours	570 hours
192 kbps	18 hours	94 hours (default setting)
512 kbps	14 hour	36 hours
1536 kbps	6 hours	12 hours



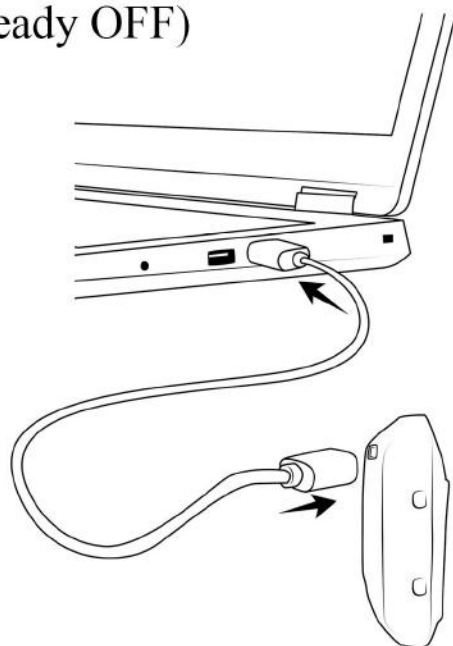
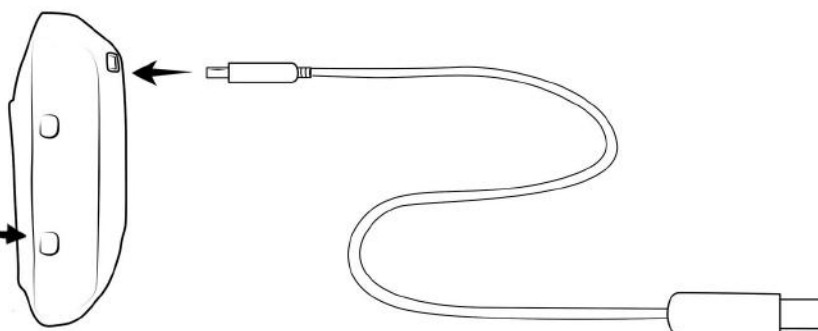
TIP: The default 192 Kbps setting is the optimum quality for a normal voice conversation.

START/STOP Recording



How to connect to PC

Press and hold power button for 2 seconds to turn OFF the recorder (skip this step if the recorder is already OFF)



Connect the device to a PC with a USB cable using the micro USB port of the recorder

NOTE: Make sure the device is turned OFF before you connect it to your PC

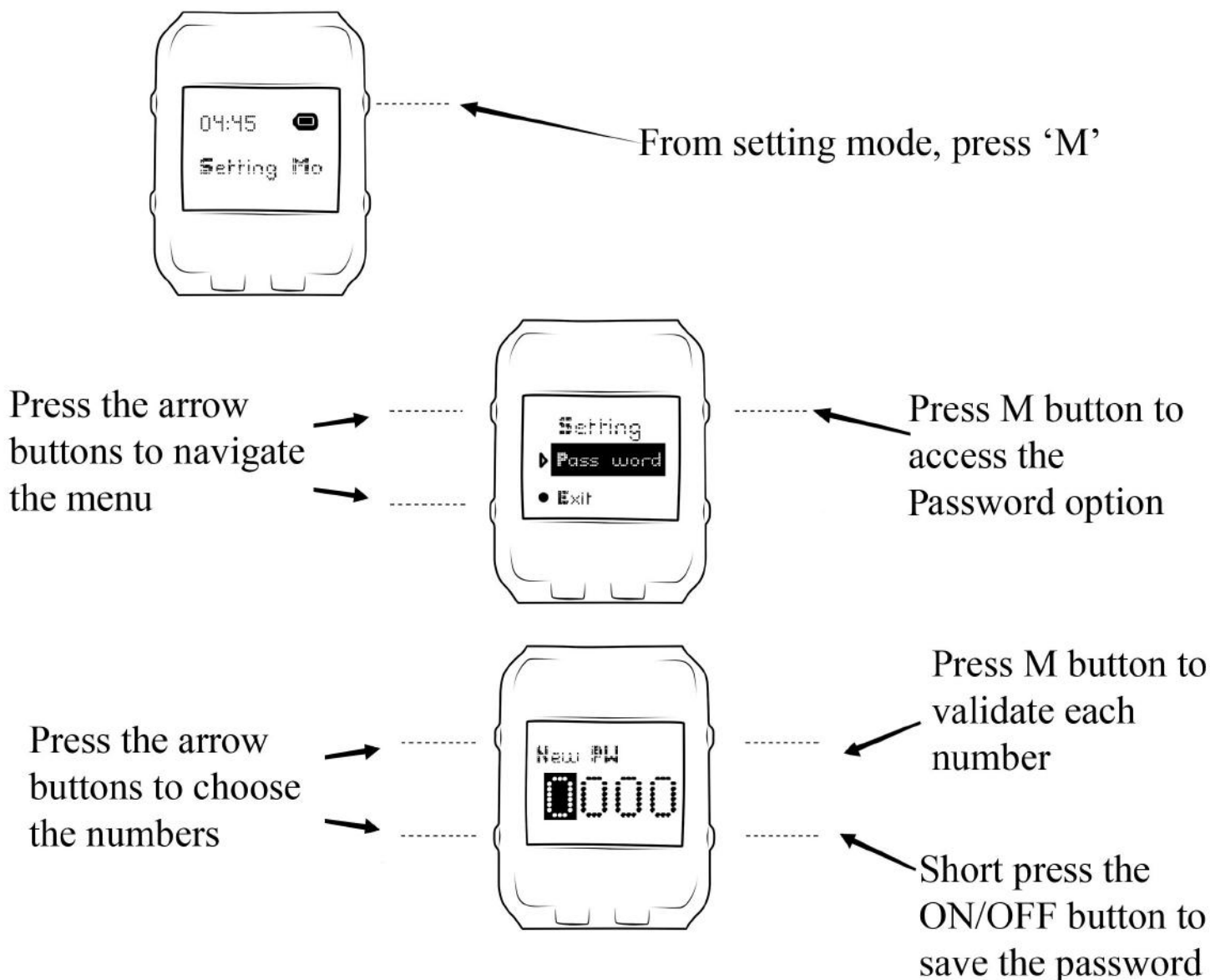
Important: If you previously set a password to your recorder, insert the password every time you connect the device to your computer, when the password pop-up window asks for.


PASSWORD CHANGING

Password changing:

NOTE: The device can function perfectly without a password!

Set up a password **ONLY** if you wish to prevent access to your recordings.



Setting up a password means that every time you will initiate the device you will be required to input it to be able to access the menu of the recorder. Also, if you connect the device to the computer, you need to input the password too. Before you will be able to access the device's partition. To disable the password protection, select 0000 as a new password, then short press  button to save and exit (less than 1 second).

IMPORTANT: If you forget your password, you must use the master password 1028 to gain access to your device.

We value your privacy and we ask your discretion as well. Please do not make this password public.

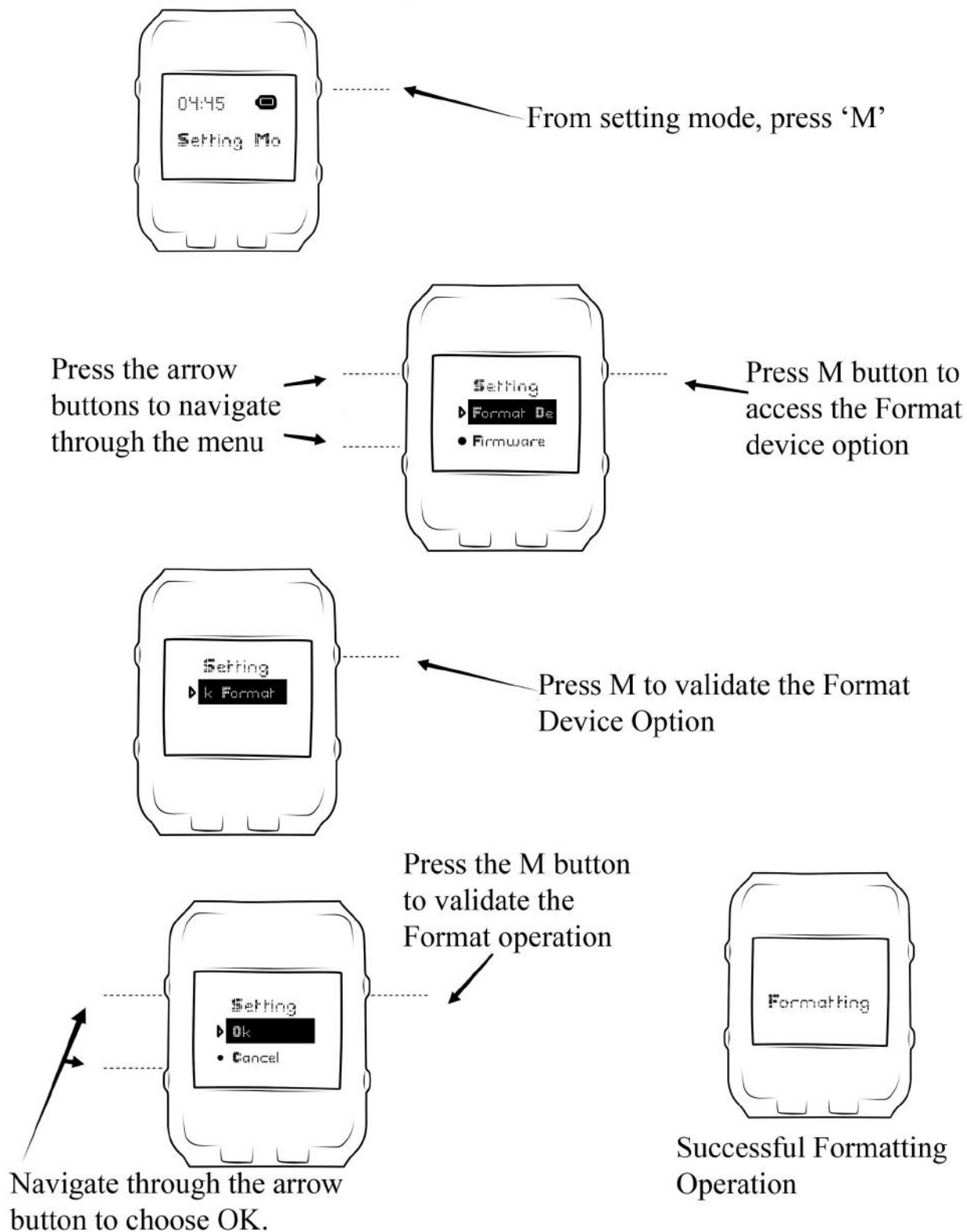
FORMAT

Use this option for a quick erase of the device's memory

WARNING: This option will **COMPLETELY ERASE ALL THE FILES** on the device!
Please make sure you back-up your audio files before proceeding.

You cannot UNDO this operation

TIP: Formatting is the recommended troubleshooting step when the partition of the device is not recognized by your computer.



Do not change these settings unless necessary.

1. Contrast: Adjust the contrast of the LCD screen.

Tip: For easier reading of the display try to read the screen in a place without direct bright light.

2. Memory Info: Use the option to check how much space is free on your recorder's memory. When the memory is full the device will display message *OVERFLOW* and will be unable to further record.

Free up some memory space to resume using the recorder.

3. Firmware version: You can check the firmware version of your device. There is no public firmware for this device since it's a custom product and not a mass production one. The device already contains the most updated firmware available.

4. Power off: This setting is designed to adjust the seconds after which your recorder will automatically shut down in case of inactivity.

a. Off time: This setting refers to the number of seconds after which the device will automatically power off if no button is pressed, when the device is *NOT* in the recording mode.

b. Sleep time: Set the number of minutes after which the device will automatically power off *EVEN* while recording. Use this setting only if you desire to power off the device after a specific period of time.

TIP: We recommend to **set it to 0** to prevent your recorder shutting down during recording.

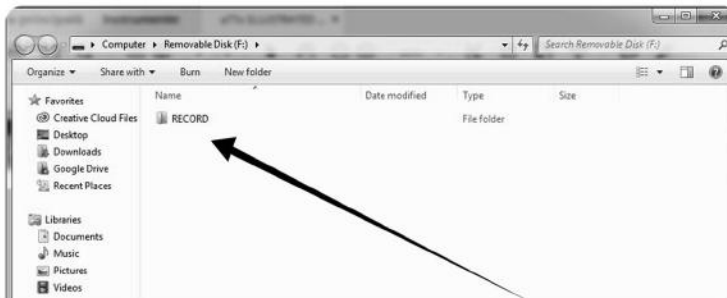
5. Backlight: Use this function to adjust the time after which the display of the recorder will turn off after you start the device/recordings and you don't press any button in the meantime. For example, if set to 10, that means: 10 seconds after you put the device in record mode, the display light will turn off and will stay off until you press a button (any button). Also, if you don't start to record and you don't press any button for 10 seconds, the display will shut down.

Press any button to wake up the display.

Playback Recordings



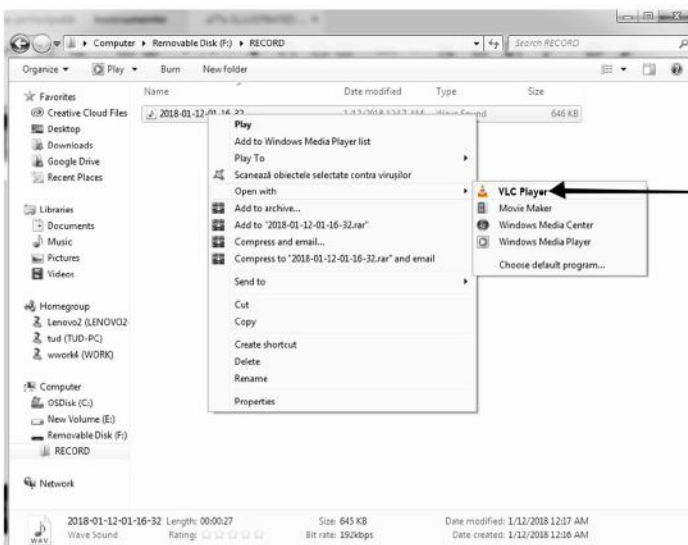
Double click to access PC window with the Record folder.



Double click Record folder to access PC window with the audio files.

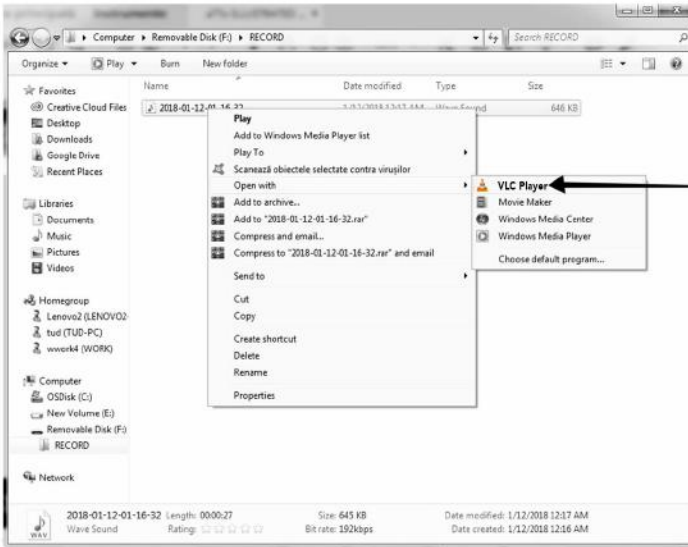
REMEMBER: Only .wav files must be stored in the RECORD folder.

Do **NOT STORE** other files in the folder RECORD, but outside this folder.

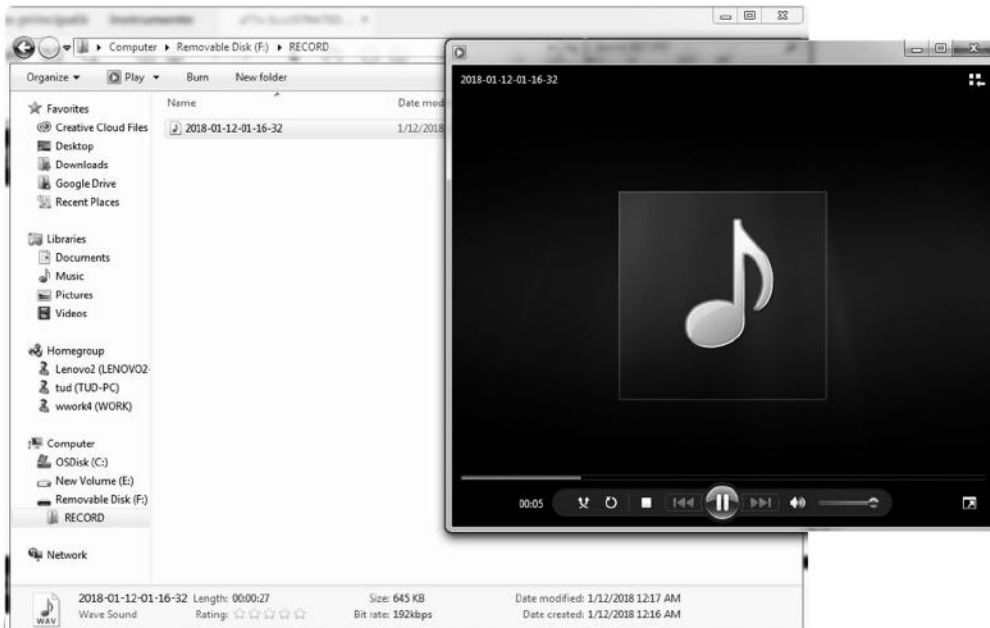


Open the audio file with a compatible .wav Player. If you have trouble playing the files, we recommend you using VLC Player (free to download from the internet)

www.videolan.com



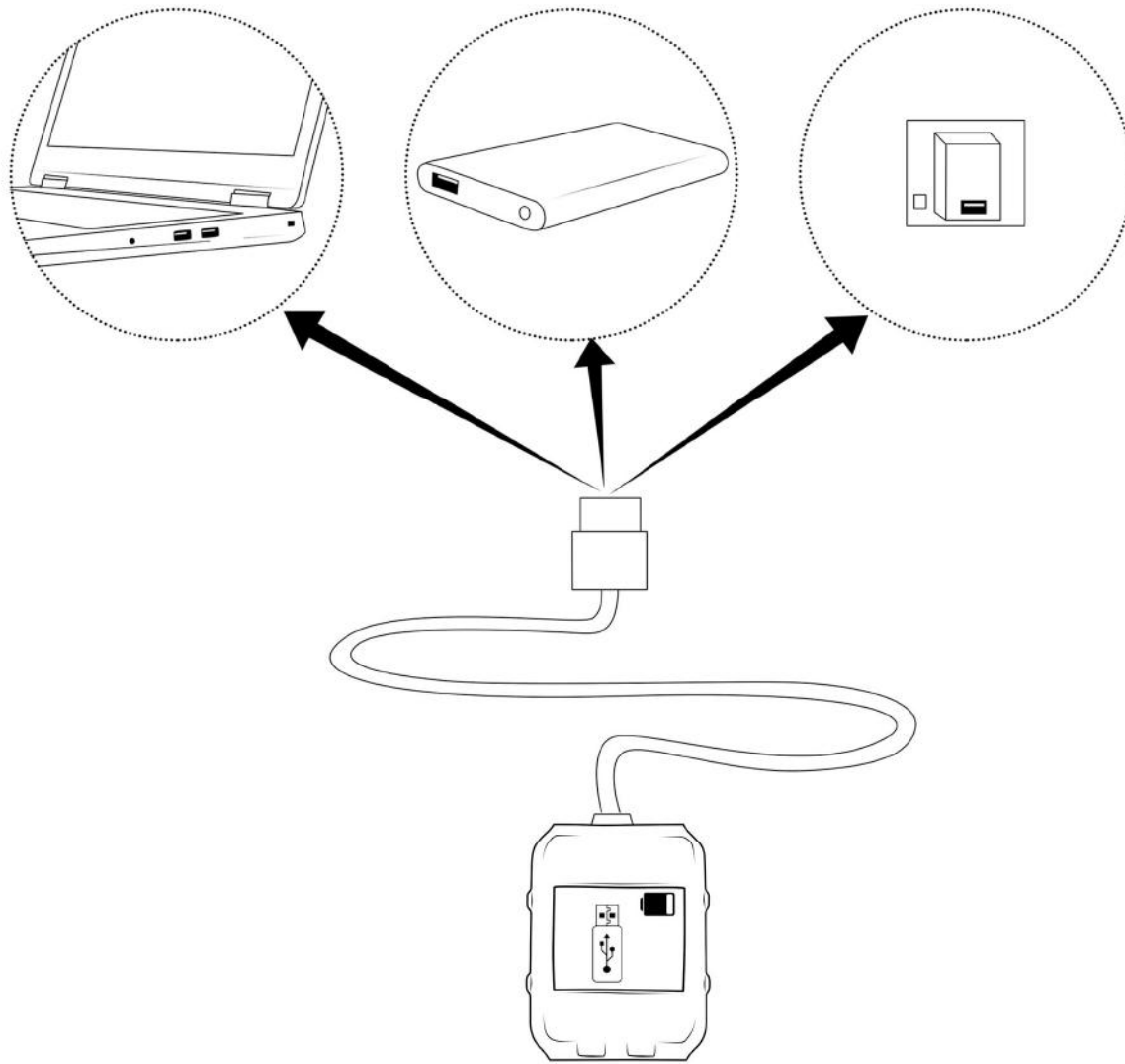
Open the audio file with a compatible .wav Player. If you have trouble playing the files, we recommend you using VLC Player (free to download from the internet) www.videolan.com



Charging the Device

The Recorder can be charged by connecting to a DC power source using the micro USB port of the device. DC power source may be PC USB port, a power bank or USB wall socket/phone charger.

aTTo Voice Recorder can also record while charging (until the memory space is full). Ensure that the device is turned off when you connect it to a power supply. Then connect it to a power source and press the **M** button to start recording.



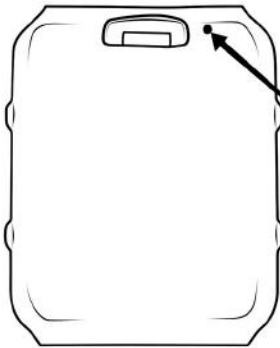
TIP: To use the computer as a charger, before you press “**M**” button, you must do a software remove device:

- for Windows – select “Safely remove hardware”
- for macOS, you must select EJECT the device

DO NOT physically remove the SAM08 Voice recorder from the computer.

Device Reset

NOTE: The device has to 2 reset option: software and hardware.



Hardware:

You might find your recorder does not charge after a longer period of being unused and discharged. Press the reset button to force start the battery so that the charging can start.

The device must be connected to a power source while performing this operation.

Software:

To reset the device to factory default settings, please press for 10 seconds the UP arrow from the left side of the device. When the reset is completed, on the device's display the message "Restored!" will appear.



TIP: The recorder needs to be turned ON to successfully reset it to factory default setting.

If you have difficulties in using your recorder, DO NOT just give up yet. Please go through to the troubleshooting steps or contact our Customer Service: attodigitalusa@gmail.com

Troubleshooting

1. **Accidentally set up another language** – press the UP arrow for 10 seconds to revert to default English.
2. **The message “OVERFLOW” appears on display** – this means that the memory of the device is full and cannot record more data.

- a. Free up some memory space by deleting files no longer needed.
- b. Use FORMAT option to completely erase and refresh device’s memory. You cannot UNDO the format.

TIP: macOS users should also delete files from the bin of the computer!!!

3. **When connected, the recorder’s partition is not visible on the computer.**

- a. If a password is set up, it should be input before the partition becomes visible on the computer.
- b. If the problem persists after using the password:
 - i. Use a new USB cable to connect the device to the computer
 - ii. Connect the device to another USB port of the computer
 - iii. If you have a software that blocks new devices (antivirus software might do that), allow access

of the recorder from that software.

If none of the above works, please contact us for a quick replacement.

4. **The battery of the device does not last as expected:**

- a. Please check the set up **recording quality** setting as it directly impacts **battery life**.

Bit Rate	Battery Life
32 kbps	20 hours
192 kbps	18 hours
512 kbps	14 hour
1536 kbps	6 hours

- b. Make sure the device is fully charged before use. (a complete charging cycle lasts 2-3 hours)

TIP: The Li-Ion battery supports more than 1000 charging cycles if the device is properly charged.

Warning: Do not leave the device to charge more than 3 hours as it will decrease battery capabilities.

5. **The display screen of the recorder shuts off inexplicably (in a few seconds after initializing the device)**

- a. Make sure the setting DISPLAY is over 20.

6. **The recorder shuts down repeatedly after a certain period.**

- a. Make sure that the settings “Stand-by” and “Power Off” are set to 0.

7. **The device did not record periods of conversation or sounds present in its range:**

- a. Make sure that on voice-activation mode the VOR level is set to 1 or 2.
- b. If you need to capture lower sounds please use continuous recording mode by setting the VOR level to 0.
- c. Make sure the recorder is close enough to the subject of interest.

For any other problem, please contact us:

attodigital.eu@gmail.com or atto-digital.com/support

Recommendations:

To extend your voice recorder's life please make sure you use it properly.

Please check below notes for reference:

1. Do NOT place or store the recorder in spaces with high temperature, damp or dust.
2. Handle the recorder with care, avoiding collisions or falls.
3. Back up files regularly on other storage units (eg. your computer) to avoid losing data due to malfunctions of device or wrongfully operating it.
4. Do NOT disassemble the recorder or replace inner parts by yourself. In case you are sending the recorder for repairs, please back up your data first. We are not responsible for the loss of information caused by maintenance.
5. It is recommended to use the device according to its intended use.

Please check the local laws before using the voice recorder and make sure that you have the consent of parties involved. aTTo digital cannot be held responsible for unsuitable usage of the recorder.

For any other problem, please contact us:

attodigital.eu@gmail.com or atto-digital.com/support