

LTE Multi Band External Vehicle or Enclosure Mounted Antenna

Pulse Part Number SLPT698/2170NMOHF



Pulse is proud to introduce the SLPT (Shadow Low Profile Transit) product line for Public Safety, WLAN, LTE and 3G/4G applications. These rugged, aesthetically pleasing antennas provide a smaller, slimmer option to our current LPT product line without sacrificing mechanical or electrical performance. The product line includes both NMO and tamper-proof direct mount products, which will support multiple cable and connector options.

SLPT antennas were designed to perform over the high-percentage bandwidth applications prevalent in the market today. As a new product line, these antennas were created specifically to serve emerging applications such as 700 MHz Public Safety, LTE, Smart Grid and WLAN. These value-oriented antennas provide a cost-effective, high-performance solution for LTE and 802.11n MIMO applications as well. When combined with our NMOHFGPS antenna, these antennas provide an efficient GPS combination solution.

Features

- NMO mount models
- Multiple and dual frequency products available
- Shorter, slimmer profile without sacrificing mechanical performance
- IP-67 rating when installed to compliant surface
- RoHS Compliant Product

Applications

- Public Safety & LTE
- 802.11n Applications
- M2M and Smart Metering

NOTE: This antenna requires an NMO high frequency mount. It is recommended the antenna be installed on a Pulse/Larsen NMOHF mount.

Confidential and Proprietary — Pulse Electronics — All Rights Reserved — 2015

This document contains confidential and proprietary information of Pulse Electronics, Inc. (Pulse) and is protected by copyright, trade secret and other state and federal laws. Its receipt or possession does not convey any rights to reproduce, disclose its contents, or to manufacture, use or sell anything it may describe. Reproduction, disclosure or use without specific written authorization of Pulse is strictly forbidden.

San Diego, California
858 674 8100

Vancouver, Washington
360 944 7551

Europe
49 7032 7806 0

China
86 512 6807 9998

LTE Multi Band External Vehicle or Enclosure Mounted Antenna

Pulse Part Number SLPT698/2170NMOHF

Electrical Specifications

Frequency [MHz]	698 - 960 / 1710 - 2400 / 2500 - 2700
Nominal Impedance []	50
Gain [dBi avg]	4.5 / 5.6 / 4
VSWR	3.0:1 / 2.0:1 / 2.2:1
Polarization	Vertical
Horizontal Plane	Omni
Power Rating [W]	10

NOTE: Performance measurements are taken on an 18" (450 mm) diameter ground plane. A similar ground plane size is recommended for optimal performance.

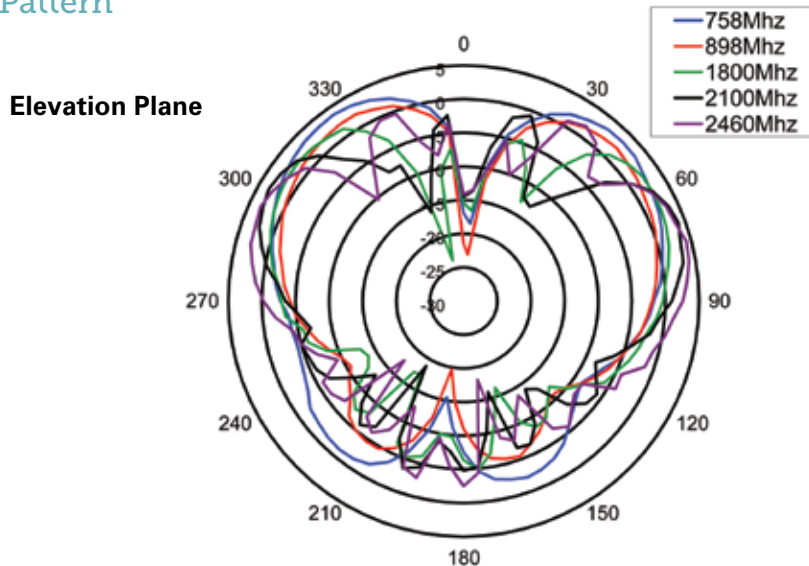
Environmental Specifications

Operating Temperature [°C]	-40 to +85
Storage Temperature [°C]	-40 to +85
Relative Humidity [%]	100

Mechanical Specifications

Radome Material	PC + ABS Plastic
Color	Black
Ingress Protection	IP-67
Weight [oz/g]	2.5 / 70.87
Dimensions [in/mm]	3 H x 1.5 Ø base / 76.2 x 38.1 Ø base
Mounting	NMOHF Mount

Radiation Pattern



For More Information

Pulse Worldwide Headquarters
12220 World Trade Drive
San Diego, CA 92128
U.S.A.

Tel: 858 674 8100
Fax: 858 674 8262

Larsen Brand Antennas
3611 NE 112th Avenue
Vancouver, WA 98682
USA

Tel: 360 944 7551
Fax: 360 944 7556

Europe Headquarters
Pulse GmbH & Co, KG
Zeppelinstrasse 15
Herrenberg, Germany

Tel: 49 7032 7806 0
Fax: 49 7032 7806 135

Pulse (Suzhou) Wireless Products Co, Inc.
99 Huo Ju Road, (#29 Bldg, 4th Phase)
Suzhou New District
Science & Tech Industrial Park
Jiangsu Province, Suzhou 215009 PR China

Tel: 86 512 6807 9998
Fax: 86 512 6809 8023



Performance warranty of products offered on this data sheet is limited to the parameters specified. Data is subject to change without notice. Other brand and product names mentioned herein may be trademarks or registered trademarks of their respective owners.
© Copyright, 2015. Pulse Electronics, Inc. All rights reserved.