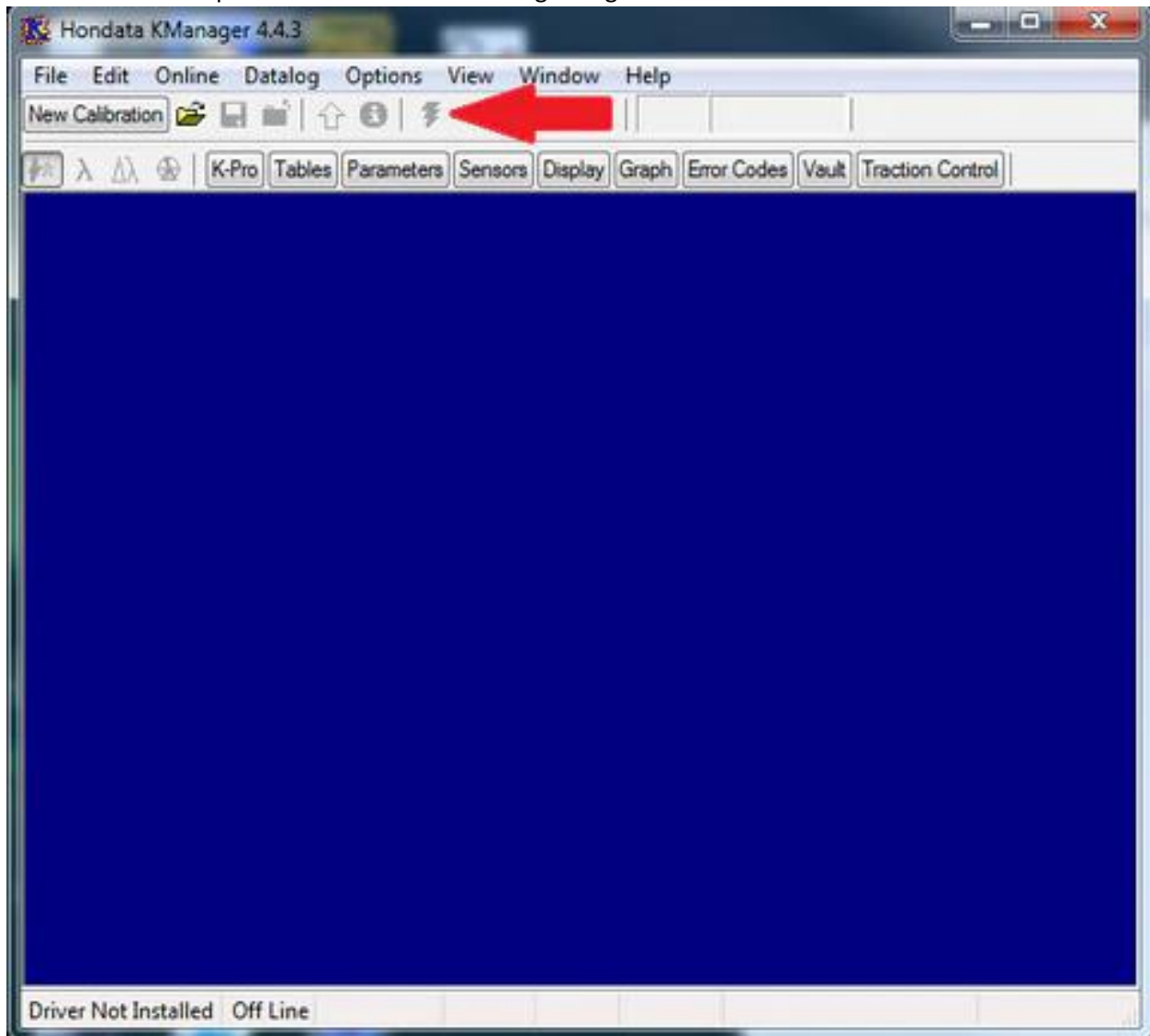




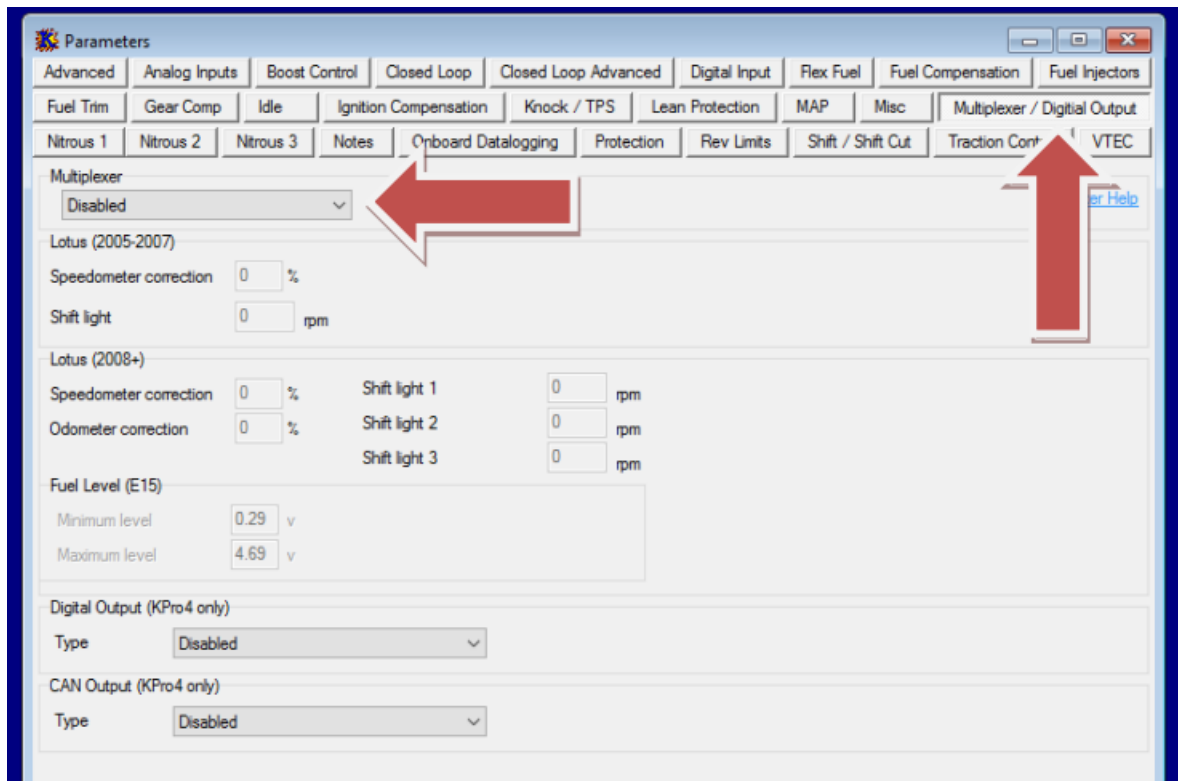
Hondata Setting for Initial Start

This will not tune your vehicle or damage it.

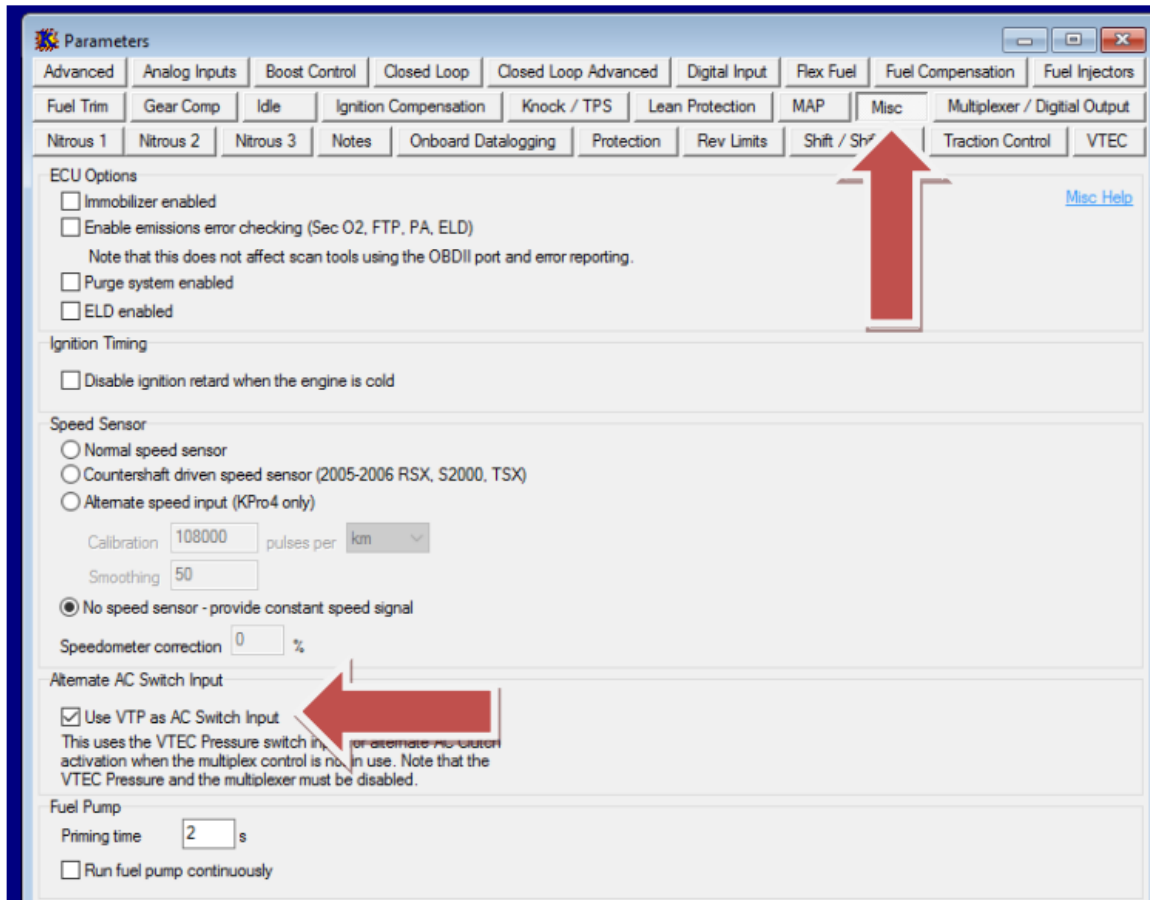
Install K manager and the drivers before connecting the Hondata to your computer. Ignition must be turned to the “on” position and then click the “lightning bolt” to connect to the ECU



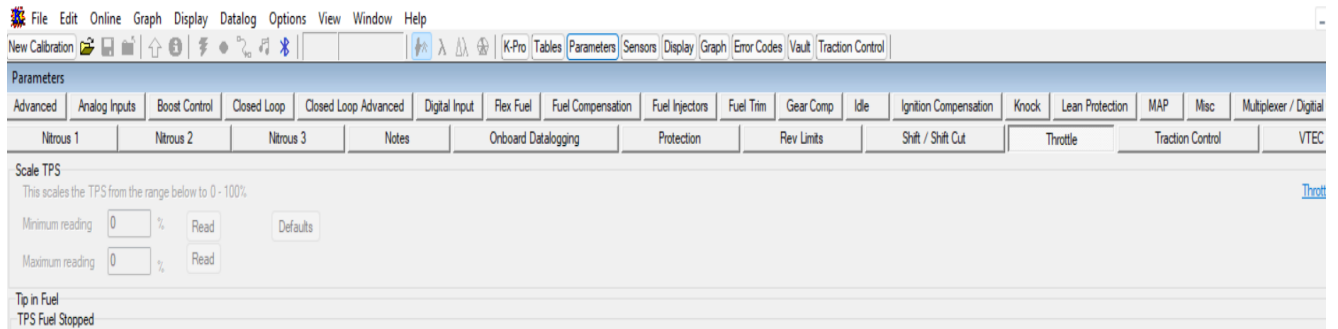
In Hondata, click "Parameters" from the top toolbar -> click the "Multiplexer/Digital Output" tab -> from the drop-down menu select "Disabled" under "Multiplexer"



Under the “MISC” tab, make sure that “Use VTC as AC Switch Input” is selected



Click on the “Throttle” tab, and adjust the TPS settings by hitting the “read” button to calibrate the closed and WOT settings.



Lastly, select the "VTEC" tab and be sure that "VTEC oil pressure switch enabled" is NOT selected.

