

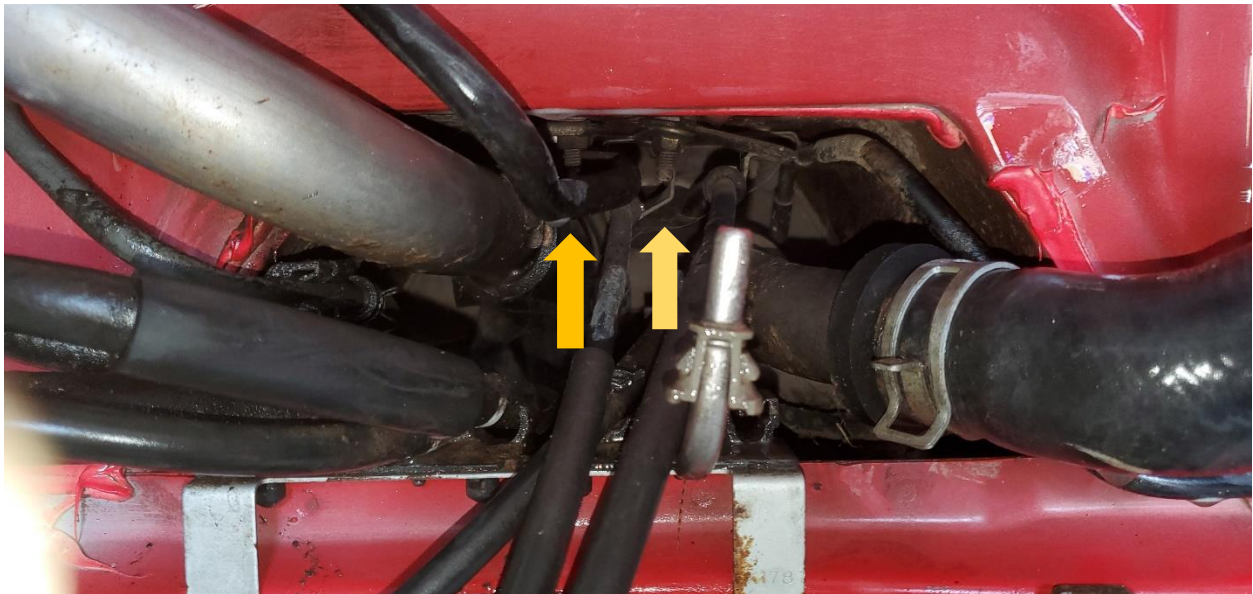


MAP RSX/EP3 Transmission shifter Adapter for 00-07 Toyota MR2 Spyder

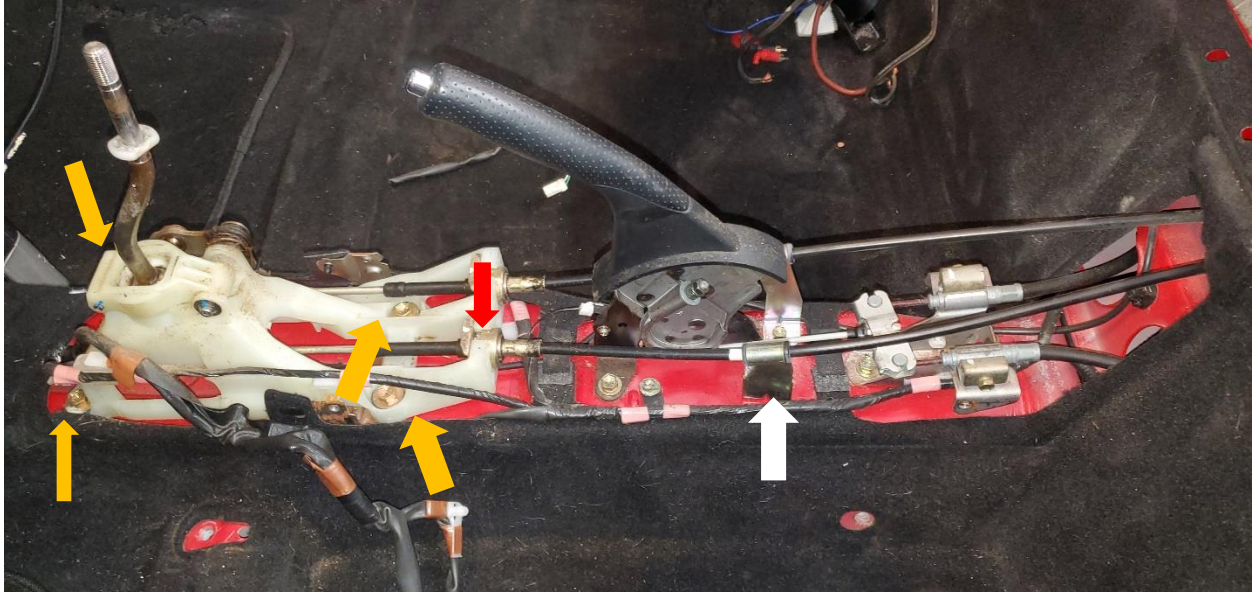
Thank you for purchasing the newest MAP shift adapter for your K Swap. This install guide is for a transmission from a 02-06 Acura RSX transmission “DC5” (Including Type S) and the 01-02 Honda Civic SI “Ep3”. The swap is easily performed with the powertrain removed from the car. If you are unaware of how to remove the powertrain, please seek professional advice.



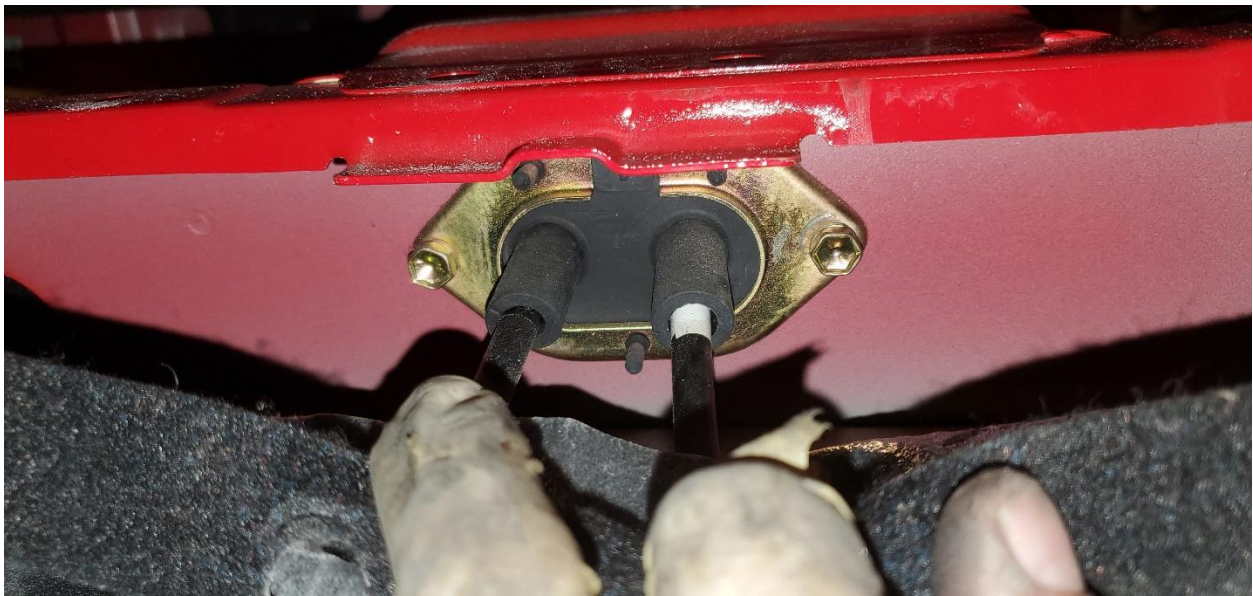
The above picture is with the engine removed. We are going to remove the driver-side cable. This kit re-uses the [passenger cable](#). If you need to also replace the passenger side cable, we do offer them with a 25% increase in thickness to increase the strength.



There are 2 nuts with studs in the middle of the car where the shift cables exit from the shifter. Undo the nuts to remove the brackets for the cables. The one on the driver side is for the driver side cable but is nearly inaccessible until the passenger side bracket is removed. These are 10mm nuts. Once removed you can take the bracket off. Now go to the interior of the car and remove the seats and center console.



Once removed this picture above should look like what is left in the vehicle. Remove the bracket with the white arrow with a 10mm socket. Use plyers or needle nose plyers to remove the retaining clip holding the cable in the car (Red Arrow). Additionally, unbolt the shifter cage from the body using a 10mm socket (Orange Arrow).

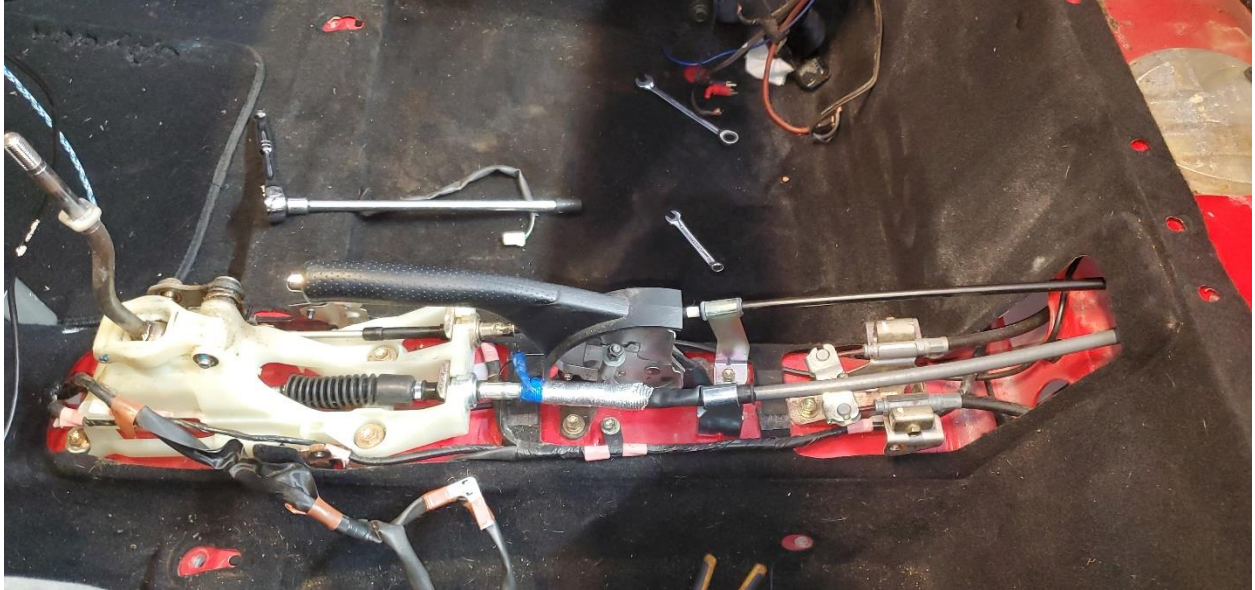




Afterwards, along the seat back, there is a bulkhead, pull the carpet down to expose the weather seal. Remove the 2x 10mm bolts in the zinc plated bracket and take the bracket off also removed the rubber weather seal pictured above.

Remove the old cable by disconnecting it from the shift cage. Spread the 2 metal wires apart and pull the casted piece of the cable off the shifter. Feed the new cable through the center of the car and attach it to the shifter arm like in the picture below.

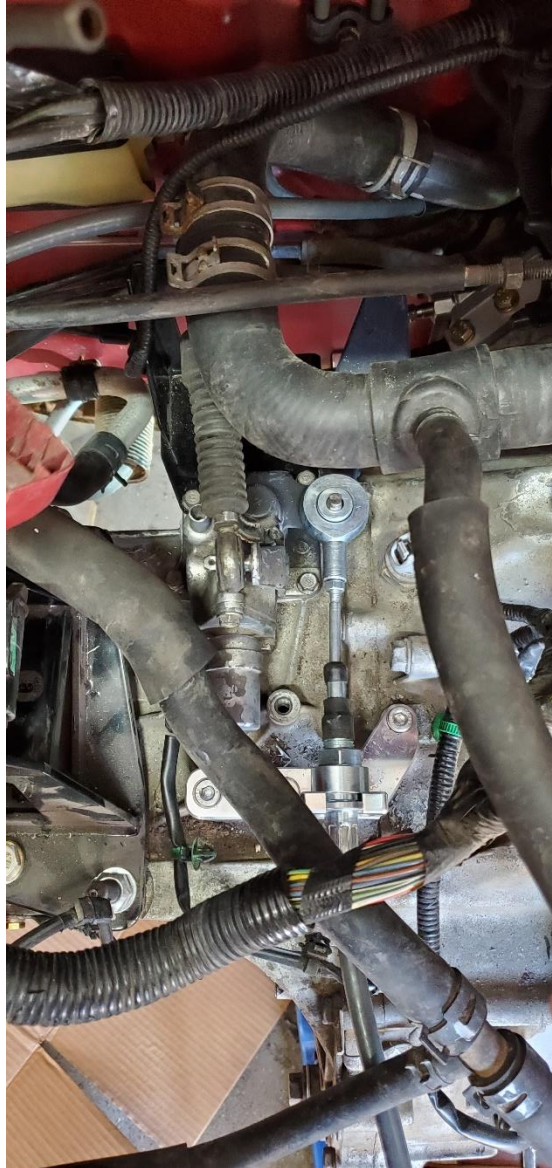




Re-attach the shifter, replace the retainer clip, and install the new bracket (see above picture).



Install both brackets as shown above. Utilize the shims as needed to make the aluminum bracket level. It is recommended to use Loctite Red on all of the bolts here.



Route the cable along the driver side of the firewall, around and under the OEM battery location, and then before the muffler to the backside of the transmission. Remove and/or re-weld the counter weld making sure there is clearance for the counterweight if you choose to re-use it like the pictures above. Connect the shifter cable to both brackets as pictured above. Adjust the throw from the adjustable threads on the end of each cable if needed. Increase the length to adjust the throw in one direction and shorten to increase the throw in the opposite direction. Only adjust if you have difficulty with reaching gears.